

TYPE

NOTICE OF INTENTION TO DRILL

C-1

**TO BE FILED WITH THE STATE CORPORATION COMMISSION
PRIOR TO COMMENCEMENT OF WELL**

API Number 15-065-20,76700
(For office use only)

1. Operator R.A. Comeau

Starting Date 8-1-75

Address 311 S. Jefferson

County Graham

Plainville, Kansas

Sec 10 Twp 8S S Rge 25W ^E _W

2. Contractor Helberg Oil Co.

Morland, Kansas

Spot Location SW-SE-SW

Address _____

3. Type of Equipment: Rotary Cable Tool _____

Nearest Lease Line 330 ft.

4. Well to be Drilled for: Oil Gas _____

Lease Name Walts

Disposal _____ Input _____ Other _____

5. Depth of Deepest Fresh Water within 1 mile 80ft ft.

Well No. four (4)

6. Depth of Municipal Water Well within 3 miles None ft.

7. Depth to Protect all Fresh Water 200 ft. ft.

Est. Total Depth 4000 ft.

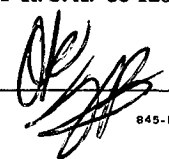
8. Amount of Surface Casing to be set 200ft. ft.

9. Alternate No. 1 _____ No. 2

REMARKS:

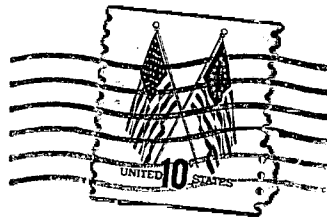
OPERATOR STATES THAT HE WILL COMPLY WITH K. S. A. 55-128

Signature of Operator

R.A. Comeau 



R. A. COMEAU
311 So. Jefferson
Plainville, Ks. 67663



State Corporation Commission of Kansas
Conservation Division
P. O. Box 17027
Wichita, Kansas 67217

RECEIVED
STATE CORPORATION COMMISSION

AUG 1 1975

8/1/75

CONSERVATION DIVISION
Wichita, Kansas

(IF PREFERRED, MAIL IN ENVELOPE)