

TYPE OR PRINT

NOTICE OF INTENTION TO DRILL

4/18/63

C-1

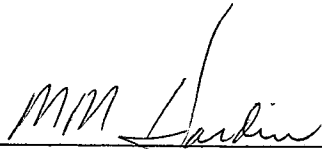
15-163-01083-00-00

TO BE FILED WITH THE STATE CORPORATION COMMISSION PRIOR TO COMMENCEMENT OF WELL

1. Operator Cities Service Oil Company Address Box 553, Russell, Kansas
2. Lease name Schneider "B" Well No. 1 County Rooks
3. Well Location C SW SW NE Sec. 10 Township 8S Range 19W
4. Well to be drilled 330 ft. from nearest lease line.
5. Drilling Contractor Peel Bros. Inc. Address Hoisington, Kansas
6. Type of equipment: Rotary Cable Tool Approx. date operation to begin 4/23 1963
7. Well to be drilled for Oil Gas Disposal Input Estimated Total Depth of Well 3550' ft.
8. Depth of deepest fresh water well within one mile of location 650 ft. If none exists, write NONE -
9. Ground elevation at location is approx. _____ ft. higher or 10 ft. lower than ground elevation at water well.
10. Depth of the deepest municipal water well within three miles of location - ft. If none exists, write NONE None
11. Operator states that he will set surface pipe at least 25 ft. below all Tertiary or unconsolidated deposits and, taking into consideration differences in ground elevations, that the minimum depth necessary, to the best of his knowledge and belief, to protect all fresh water zones is 640 ft. and operator agrees to set surface pipe at this location to a depth of not less than 700 ft. Alternate 1 Alternate 2 .

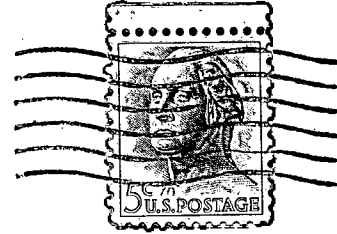
REMARKS:

Signature of Operator



M. M. Hardin, Dist. Supt.





**State Corporation Commission of Kansas
Conservation Division
500 Insurance Building
212 North Market
Wichita 2, Kansas**

RECEIVED
STATE CORPORATION COMMISSION

APR 22 1963

CONSERVATION DIVISION
Wichita, Kansas

4-22-63

(IF PREFERRED, MAIL IN ENVELOPE)