

STATE CORPORATION COMMISSION OF KANSAS
OIL & GAS CONSERVATION DIVISION
WELL COMPLETION FORM
ACO-1 WELL HISTORY
DESCRIPTION OF WELL AND LEASE

API NO. 15- 163-232180000

County Rooks
NW-NE-SE Sec. 5 Twp. 9S Rge. 17W
2310 Feet from (S)/N (circle one) Line of Section
990 Feet from (E)/W (circle one) Line of Section
Footages Calculated from Nearest Outside Section Corner:
NE, (SE), NW or SW (circle one)
Lease Name Fischer Well 1
Field Name Dopita
Producing Formation Lansing-Kansas City
Elevation: Ground KB 2011'

Operator: License # 30730
Name: Horizontal Development and Production Inc.
Address 401 East 4th Street #415
City/State/Zip Austin, TX 78701
Purchaser:
Operator Contact Person: Steve Watson
Phone (512) 474-5290

Total Depth 3459' PBTB 3315'
Amount of Surface Pipe Set and Cemented at 210' Feet
Multiple Stage Cementing Collar Used? X Yes No
If yes, show depth set Feet
If Alternate II completion, cement circulated from 1374'
feet depth to Surface w/ 250' sx cmt.

Contractor: Name: Emphasis Oil Operations
License: 8241
Wellsite Geologist: Richard Hall
Designate Type of Completion
X New Well Re-Entry Workover
Oil SWD SIOW Temp. Abd.
Gas ENHR SIGW
Dry Other (Core, WSW, Expl., Cathodic, etc)

Drilling Fluid Management Plan
(Data must be collected from the Reserve Pit) *ALT II Per Dist 4 DPW 8-12-96*
Chloride content 6,500 ppm Fluid volume 700 bbls
Dewatering method used Evaporation
Location of fluid disposal if hauled offsite:

If Workover:
Operator:
Well Name:
Comp. Date Old Total Depth
Deepening Re-perf. Conv. to Inj/SWD
Plug Back PBTB
Commingled Docket No.
Dual Completion Docket No.
Other (SWD or Inj?) Docket No.

Operator Name Horizontal Development and Production Inc.
Lease Name Abel 1 License No. 30730
SE Quarter Sec. 1 Twp. 9 S Rng. 19 (E)/W
County Jefferson Docket No.

04/15/93 04/21/93 05/08/93
Spud Date Date Reached TD Completion Date

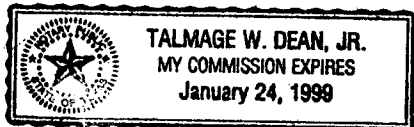
INSTRUCTIONS: An original and two copies of this form shall be filed with the Kansas Corporation Commission, 130 S. Market - Room 2078, Wichita, Kansas 67202, within 120 days of the spud date, recompletion, workover or conversion of a well. Rule 82-3-130, 82-3-106 and 82-3-107 apply. Information on side two of this form will be held confidential for a period of 12 months if requested in writing and submitted with the form (see rule 82-3-107 for confidentiality in excess of 12 months). One copy of all wireline logs and geologist well report shall be attached with this form. ALL CEMENTING TICKETS MUST BE ATTACHED. Submit CP-4 form with all plugged wells. Submit CP-111 form with all temporarily abandoned wells.

All requirements of the statutes, rules and regulations promulgated to regulate the oil and gas industry have been fully complied with and the statements herein are complete and correct to the best of my knowledge.

Signature *Phillip D. Kushner*
(Phillip D. Kushner)
Title President Date
Subscribed and sworn to before me this 31 day of July 19 96.
Notary Public *Talmage W. Dean*
Date Commission Expires 1-24-99

K.C.C. OFFICE USE ONLY
F Letter of Confidentiality Attached
C Wireline Log Received
C Geologist Report Received
Distribution
KCC SWD/Rep NGPA
KGS Plug Other (Specify)

Form ACO-1 (7-91)



RECEIVED
KANSAS CORPORATION COMMISSION

8/2/96 AUG 02 1996

CONSERVATION DIVISION
WICHITA, KS

15-163-23218-0000

SIDE TWO

Operator Name Horizontal Development and Production Inc. Lease Name Fischer Well # 1

Sec. 5 Twp. 9S Rge. 17 East West County Rooks

ORIGINAL

INSTRUCTIONS: Show important tops and base of formations penetrated. Detail all cores. Report all drill stem tests giving interval tested, time tool open and closed, flowing and shut-in pressures, whether shut-in pressure reached static level, hydrostatic pressures, bottom hole temperature, fluid recovery, and flow rates if gas to surface during test. Attach extra sheet if more space is needed. Attach copy of log.

Drill Stem Tests Taken (Attach Additional Sheets.)	<input checked="" type="checkbox"/> Yes <input type="checkbox"/> No	<input checked="" type="checkbox"/> Log	Formation (Top), Depth and Datums	<input type="checkbox"/> Sample
Samples Sent to Geological Survey	<input type="checkbox"/> Yes <input checked="" type="checkbox"/> No	Name	Top	Datum
Cores Taken	<input type="checkbox"/> Yes <input checked="" type="checkbox"/> No	Base KC	802	+269
Electric Log Run (Submit Copy.)	<input checked="" type="checkbox"/> Yes <input type="checkbox"/> No	Marmaton	940	+131
List All E.Logs Run: Radiation Guard		Cherokee	1041	+ 37
Compensated Density Neutron		Coal Marker	1454	-383
Gamma Ray Bond Log		Upper McLouth	1520	-449
		Middle McLouth	1524	-453
		Lower McLouth	1540	-469
		Mississippi	1555	-484

CASING RECORD <input checked="" type="checkbox"/> New <input type="checkbox"/> Used							
Report all strings set-conductor, surface, intermediate, production, etc.							
Purpose of String	Size Hole Drilled	Size Casing Set (In O.D.)	Weight Lbs./Ft.	Setting Depth	Type of Cement	# Sacks Used	Type and Percent Additives
Surface	12 1/4"	8 5/8"		210'	60/40	135	3%CaCl 2%gel
Production	7 7/8"	5 1/2"		3451'	40/60 Poz mix	135	6%salt
							5%gilsonite

ADDITIONAL CEMENTING/SQUEEZE RECORD				
Purpose:	Depth Top Bottom	Type of Cement	#Sacks Used	Type and Percent Additives
<input checked="" type="checkbox"/> Perforate <input checked="" type="checkbox"/> Protect Casing <input type="checkbox"/> Plug Back TD <input type="checkbox"/> Plug Off Zone	1374'	60/40 Poz 6%gel	250	

DPW
KCC

Shots Per Foot	PERFORATION RECORD - Bridge Plugs Set/Type Specify Footage of Each Interval Perforated	Acid, Fracture, Shot, Cement Squeeze Record	
		(Amount and Kind of Material Used)	Depth
2	3326-3329'	2,000 gals. 15% sga	3326-3329'
2	3267-3269', 3255-3257', 3246-3248'	1,500 gals. 15% ins	3326-3329'
2	3223-3225', 3209-3211', 3204-3206'	1,500 gals. 15% ins	3326-3329'
	bridge plug @3315'		

TUBING RECORD	Size 2 3/8"	Set At 3310'	Packer At none	Liner Run <input type="checkbox"/> Yes <input checked="" type="checkbox"/> No
Date of First, Resumed Production, SWD or Inj. 05/22/93	Producing Method <input type="checkbox"/> Flowing <input type="checkbox"/> Pumping <input type="checkbox"/> Gas Lift <input type="checkbox"/> Other (Explain)			
Estimated Production Per 24 Hours	Oil 25	Bbls.	Gas Mcf	Water 25
				Bbls. Gas-Oil Ratio Gravity 38

Disposition Disposition of Gas: Vented Sold Used on Lease (If vented, submit ACO-18.)

METHOD OF COMPLETION Open Hole Perf. Dually Comp. Commingled Other (Specify)

Production Interval 3267-3269' _____
3204-3206' _____

RECEIVED
KANSAS CORPORATION COMMISSION

8/2/96 AUG 02 1996

CONSERVATION DIVISION
WICHITA, KS

15-163-23218

TRILOBITE TESTING, L.L.C.

P.O. Box 362 • Hays, Kansas 67601

ORIGINAL

Drill-Stem Test Data

Well Name FISHER #1 Test No. 1 Date 4/19/93
 Company HORIZONTAL DEVELOPMENT & PRODUCTION Zone LKC 'C-D'
 Address 277 TOWN & COUNTRY VILLAGE PALO ALTO CALIF Elevation 2016
 Co. Rep./Geo. RICK HALL Cont. EMPHASIS #6 Est. Ft. of Pay _____
 Location: Sec. 5 Twp. 9S Rge. 17W Co. ROOKS State KS

Interval Tested	<u>3188-3240</u>	Drill Pipe Size	<u>4.5" XH</u>
Anchor Length	<u>52</u>	Wt. Pipe I.D. - 2.7 Ft. Run	_____
Top Packer Depth	<u>3183</u>	Drill Collar - 2.25 Ft. Run	_____
Bottom Packer Depth	<u>3188</u>	Mud Wt.	<u>9.0</u> lb/Gal.
Total Depth	<u>3240</u>	Viscosity	<u>46</u> Filtrate <u>8.0</u>

Tool Open @ 11:52 AM Initial Blow WEAK 1/4" BLOW BUILDING TO 2 3/4"
 Final Blow VERY WEAK SURFACE BLOW BUILDING TO 3 1/2"

Recovery - Total Feet 62

Flush Tool? NO

RECEIVED
KANSAS CORPORATION COMMISSION

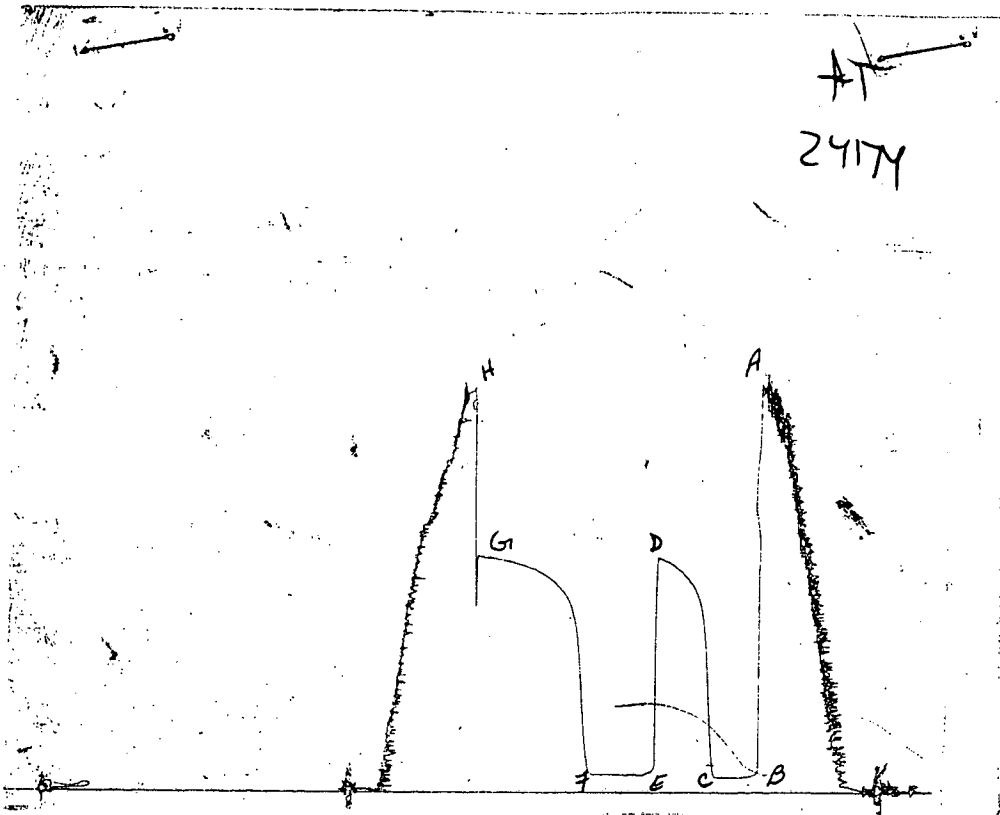
8/2/96
AUG 02 1996

Rec. <u>5</u>	Feet of	<u>CLEAN OIL</u>	
Rec. <u>57</u>	Feet of	<u>SLIGHTLY OIL CUT MUD 5%OIL/95%MUD</u>	CONSERVATION DIVISION WICHITA, KS
Rec. _____	Feet of	_____	
Rec. _____	Feet of	_____	
Rec. _____	Feet of	_____	

BHT 97 °F Gravity 38 °API @ 50 °F Corrected Gravity 39 °API
 RW 0.51 @ 50 °F Chlorides 19000 ppm Recovery Chlorides 4000 ppm System

(A) Initial Hydrostatic Mud	<u>1551.1</u> PSI	AK1 Recorder No.	<u>22150</u>	Range	<u>3925</u>
(B) First Initial Flow Pressure	<u>31.6</u> PSI	@ (depth)	<u>3192</u>	w / Clock No.	<u>30401</u>
(C) First Final Flow Pressure	<u>35.4</u> PSI	AK1 Recorder No.	<u>24174</u>	Range	<u>3050</u>
(D) Initial Shut-in Pressure	<u>881.8</u> PSI	@ (depth)	<u>3236</u>	w / Clock No.	<u>25814</u>
(E) Second Initial Flow Pressure	<u>50.8</u> PSI	AK1 Recorder No.	_____	Range	_____
(F) Second Final Flow Pressure	<u>52.6</u> PSI	@ (depth)	_____	w / Clock No.	_____
(G) Final Shut-in Pressure	<u>884.7</u> PSI	Initial Opening	<u>30</u>	Final Flow	<u>45</u>
(H) Final Hydrostatic Mud	<u>1545.2</u> PSI	Initial Shut-in	<u>45</u>	Final Shut-in	<u>90</u>

Our Representative PAUL SIMPSON



This is an actual photograph of recorder chart

	FIELD READING	OFFICE READING
(A) INITIAL HYDROSTATIC MUD	1567	1551.1
(B) FIRST INITIAL FLOW PRESSURE	44	31.6
(C) FIRST FINAL FLOW PRESSURE	52	35.4
(D) INITIAL CLOSED-IN PRESSURE	903	881.8
(E) SECOND INITIAL FLOW PRESSURE	59	50.8
(F) SECOND FINAL FLOW PRESSURE	67	52.6
(G) FINAL CLOSED-IN PRESSURE	911	884.7
(H) FINAL HYDROSTATIC MUD	1552	1545.2

15-163-23218-00-00

TRILOBITE TESTING L.L.C.

ORIGINAL

P.O. Box 362 • Hays, Kansas 67601

Test Ticket

No 5722

Well Name & No. Fisher #1 Test No. 1 Date 4-19-93
 Company Horizontal Development & Production Zone Tested LKC 'C-D'
 Address 277 Town & Country Village Palo Alto CA Elevation _____
 Co. Rep./Geo. Rick Hall cont. Emphasis #6 Est. Ft. of Pay _____
 Location: Sec. 5 Twp. 9s Rge. 17w Co. Rooks State Ks
 No. of Copies _____ Distribution Sheet _____ Yes _____ No _____ Turnkey _____ Yes _____ No _____ Evaluation _____

Interval Tested 3188-3240 Drill Pipe Size 4 1/2 XH
 Anchor Length 52 Top Choke — 1" _____ Bottom Choke — 3/4" _____
 Top Packer Depth 3183 Hole Size — 7 7/8" _____ Rubber Size — 6 3/4" _____
 Bottom Packer Depth 3188 Wt. Pipe I.D. — 2.7 Ft. Run _____
 Total Depth 3240 Drill Collar — 2.25 Ft. Run _____
 Mud Wt. 9.0 lb/gal. Viscosity 46 Filtrate 8.0
 Tool Open @ 11:52 AM Initial Blow weak 4 1/2" blow building to 2 3/4"
 Final Blow 1/2 weak surface blow building to 3 1/2"

Recovery — Total Feet	Feet of Gas In Pipe	Flush Tool?
Rec. <u>5</u> Feet Of <u>cl oil</u>	% gas _____ % oil _____ % water _____ % mud _____	
Rec. <u>57</u> Feet Of <u>SOCM</u>	% gas <u>5</u> % oil _____ % water _____ % mud <u>95</u>	
Rec. _____ Feet Of _____	% gas _____ % oil _____ % water _____ % mud _____	
Rec. _____ Feet Of <u>water in tool</u>	% gas _____ % oil _____ % water _____ % mud _____	
Rec. _____ Feet Of _____	% gas _____ % oil _____ % water _____ % mud _____	

BHT 97 °F Gravity 38 °API @ 50 °F Corrected Gravity 39 °API
 RW .51 @ 50 °F chlorides 19,000 ppm Recovery Chlorides 4000 ppm System

(A) Initial Hydrostatic Mud 1567 PSI AK1 Recorder No. 22150 Range 3925
 (B) First Initial Flow Pressure 44 PSI @ (depth) 3192 w/Clock No. 30401
 (C) First Final Flow Pressure 52 PSI AK1 Recorder No. 24174 Range 3050
 (D) Initial Shut-in Pressure 903 PSI @ (depth) 3236 w/Clock No. 25814
 (E) Second Initial Flow Pressure 59 PSI AK1 Recorder No. _____ Range _____
 (F) Second Final Flow Pressure 67 PSI @ (depth) _____ w/Clock No. _____
 (G) Final Shut-in Pressure 911 PSI Initial Opening 30 Test X
 (H) Final Hydrostatic Mud 1552 PSI Initial Shut-in 45 Jars _____

Final Flow 45 Safety Joint _____
 Final Shut-in 90 Straddle _____
 Circ. Sub _____
 Sampler _____
 Extra Packer _____

Approved By [Signature]

Our Representative [Signature]

TRILOBITE TESTING L.L.C. SHALL NOT BE LIABLE FOR DAMAGE OF ANY KIND OF THE PROPERTY OR PERSONNEL OF THE ONE FOR WHOM A TEST IS MADE, OR FOR ANY LOSS SUFFERED OR SUSTAINED, DIRECTLY OR INDIRECTLY, THROUGH THE USE OF ITS EQUIPMENT, OR ITS STATEMENTS OR OPINION CONCERNING THE RESULTS OF ANY TEST. TOOLS LOST OR DAMAGED IN THE HOLE SHALL BE PAID FOR AT COST BY THE PARTY FOR WHOM THE TEST IS MADE.

15-163-23218-00-00
TRILOBITE TESTING, L.L.C. ORIGINAL
 P.O. Box 362 • Hays, Kansas 67601

Drill-Stem Test Data

Well Name FISHER #1 Test No. 2 Date 4/20/93
 Company HORIZONTAL DEVELOPMENT & PRODUCTION Zone LKC 'G-I'
 Address 277 TOWN & COUNTRY VILLAGE PALO ALTO CALIF Elevation 2016
 Co. Rep./Geo. RICK HALL Cont. EMPHASIS #6 Est. Ft. of Pay 4
 Location: Sec. 5 Twp. 9S Rge. 17W Co. ROOKS State KS

Interval Tested 3235-3345 Drill Pipe Size 4.5" XH
 Anchor Length 110 Wt. Pipe I.D. - 2.7 Ft. Run _____
 Top Packer Depth 3230-3235 Drill Collar - 2.25 Ft. Run 59
 Bottom Packer Depth 3345 Mud Wt. 9.0 lb/Gal.
 Total Depth 3459 Viscosity 48 Filtrate 7.2

Tool Open @ 3:41 PM Initial Blow 1" BLOW BUILDING TO BOTTOM OF BUCKET IN 25 MINUTES
(SURFACE BLOW ON SHUTIN)
 Final Blow 1" BLOW BUILDING TO BOTTOM OF BUCKET IN 30 MINUTES
(1" BLOW BACK ON SHUTIN)

Recovery - Total Feet 150 Flush Tool? NO

Rec. 150 Feet of GAS IN PIPE
 Rec. 15 Feet of CLEAN GASSY OIL 20%GAS/80%OIL
 Rec. 15 Feet of GAS HEAVY OIL WATER CUT MUD 20%GAS/25%OIL/15%WATER/40M
 Rec. 60 Feet of SLIGHTLY OIL CUT WATER MUD 10%OIL/40%WATER/50%MUD
 Rec. 60 Feet of OIL CUT MUDDY WATER 5%OIL/65%WATER/30%MUD

BHT 102 °F Gravity 38 °API @ 70 °F Corrected Gravity 37 °API
 RW 0.31 @ 47 °F Chlorides 34000 ppm Recovery Chlorides 4000 ppm System

(A) Initial Hydrostatic Mud 1700.2 PSI AK1 Recorder No. 22150 Range 3925

(B) First Initial Flow Pressure 96.6 PSI @ (depth) 3239 w / Clock No. 30401

(C) First Final Flow Pressure 104.8 PSI AK1 Recorder No. 24174 Range 3050

(D) Initial Shut-in Pressure 837.7 PSI @ (depth) 3340 w / Clock No. 25814

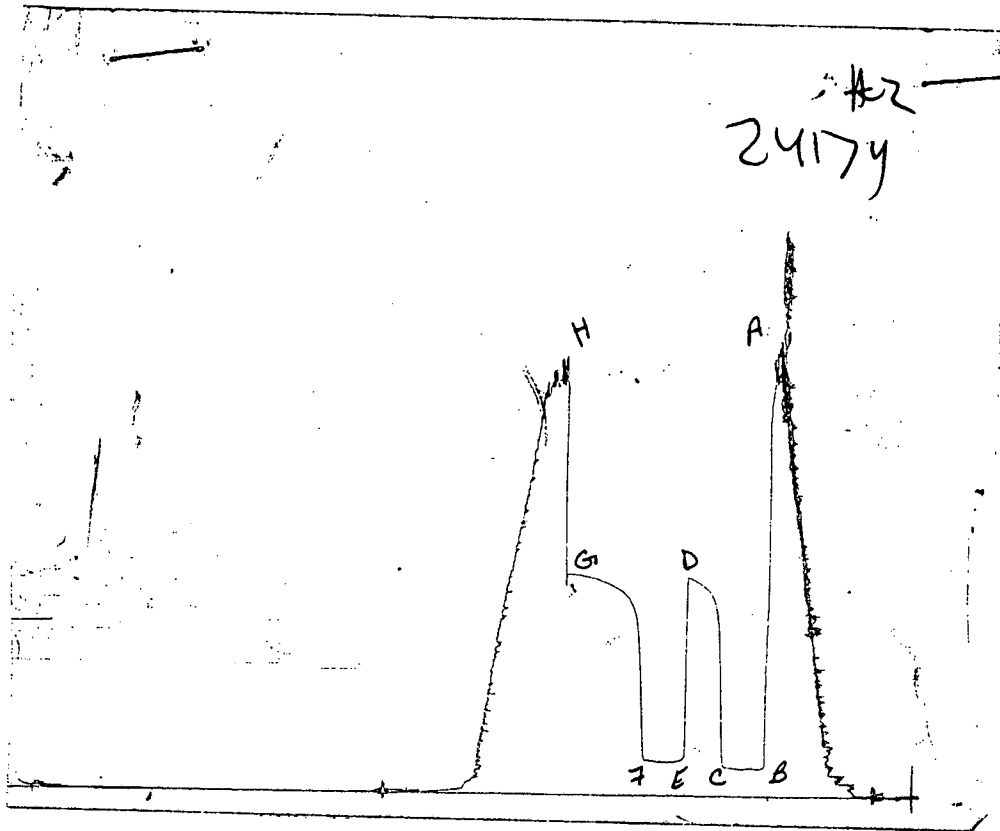
(E) Second Initial Flow Pressure 128.1 PSI AK1 Recorder No. 11058 Range 4475

(F) Second Final Flow Pressure 128.8 PSI @ (depth) 3458 w / Clock No. 31154

(G) Final Shut-in Pressure 844.5 PSI Initial Opening 30 Final Flow 30

(H) Final Hydrostatic Mud 1676.8 PSI Initial Shut-in 30 Final Shut-in 60

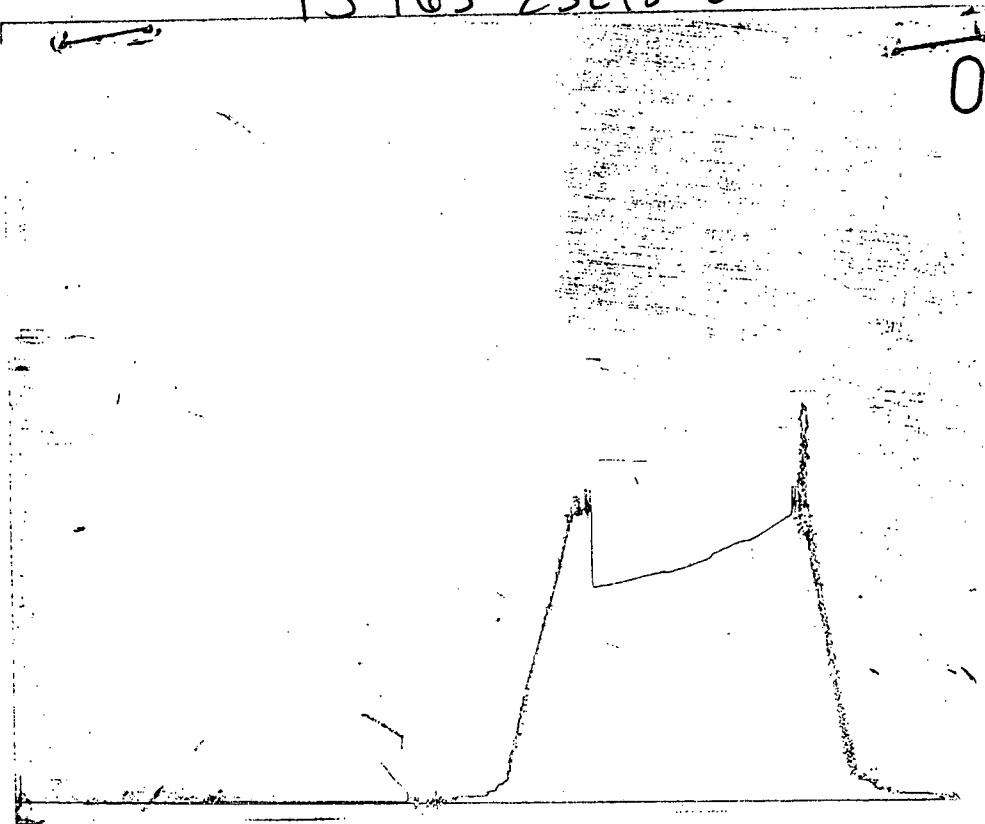
Our Representative PAUL SIMPSON



This is an actual photograph of recorder chart

	FIELD READING	OFFICE READING
(A) INITIAL HYDROSTATIC MUD	1696	1700.2
(B) FIRST INITIAL FLOW PRESSURE	97	96.6
(C) FIRST FINAL FLOW PRESSURE	104	104.8
(D) INITIAL CLOSED-IN PRESSURE	835	837.7
(E) SECOND INITIAL FLOW PRESSURE	127	128.1
(F) SECOND FINAL FLOW PRESSURE	134	128.8
(G) FINAL CLOSED-IN PRESSURE	842	844.5
(H) FINAL HYDROSTATIC MUD	1674	1676.8

ORIGINAL



This is an actual photograph of recorder chart

FIELD
READING

OFFICE
READING

- (A) INITIAL HYDROSTATIC MUD
- (B) FIRST INITIAL FLOW PRESSURE
- (C) FIRST FINAL FLOW PRESSURE
- (D) INITIAL CLOSED-IN PRESSURE
- (E) SECOND INITIAL FLOW PRESSURE
- (F) SECOND FINAL FLOW PRESSURE
- (G) FINAL CLOSED-IN PRESSURE
- (H) FINAL HYDROSTATIC MUD

ORIGINAL

15-163-23218-00-00

COMPUTER EVALUATION BY TRILOBITE TESTING, L.L.C.

HORIZONTAL DEVELOPME FISHER #1 DST 2
5 9S 17W ROOKS KS

```
*****
ELEVATION:          2016 KB          EST. PAY          4 FT
DATUM:              -1224          ZONE TESTED:     LKC 'G-I'
TEST INTERVAL:      3235-3345      TIME INTERVALS:  30-30-30-60
RECORDER DEPTH:     3239          VISCOSITY:       7.613 CP
BOTTOM HOLE TEMP:   102          HOLE SIZE:       7.875 IN
*****
```

```
*****
CUBIC FEET OF GAS IN PIPE:          12
TOTAL FEET OF RECOVERY:             150.00 CORRECTED PIPE FILLUP:          353.846
TOTAL BARRELS OF RECOVERY:          1.58 CORR. BARRELS OF RECOVERY:        4.469 BBL
BARRELS IN DRILL PIPE:              1.29 API GRAVITY:                   37
BARRELS IN WEIGHT PIPE:             0.00 FLUID GRADIENT:                 0.364
BARRELS IN DRILL COLLARS:           0.29
GAS OIL RATIO:                      7.57 CU.FT/BBL
BUBBLE POINT PRESSURE:              63
UNCORRECTED INITIAL PRODUCTION:                                37.98 BBL
INITIAL PRODUCTION CORRECTED TO FINAL FLOW PRESSURE:          107.26 BBL/DAY
INITIAL PRODUCTION CORRECTED TO PSEUDO STEADY FLOW STATE:    42.468
*****
```

```
*****
INITIAL SLOPE          287.64 PSI/CYCL FINAL SLOPE          86.02 PSI/CYCLE
INITIAL P*            931 PSI          FINAL P*            870 PSI
*****
```

```
*****
TRANSMISSIBILITY          202.75 (MD.-FT./CP.)
PERMEABILITY              385.86 (MD.)
INDICATED FLOW CAPACITY  1543.45 (MD.FT)
PRODUCTIVITY INDEX        0.23 (BARREL/DAY/PSI)
DAMAGE RATIO              1.58
RADIUS OF INVESTIGATION  152.16 (FT.)
POTENTIOMETRIC SURFACE   794.53 (FT.)
DRAWDOWN FACTOR          6.552 (%)
*****
```

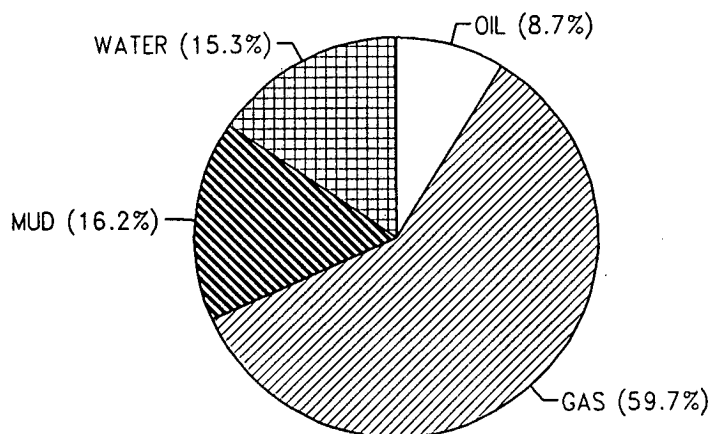
15-163-23218-00-00
 CALCULATED RECOVERY ANALYSIS

ORIGINAL

DST # 2 TICKET # 5723

SAMPLE #	TOTAL FEET	GAS		OIL		WATER		MUD	
		%	FEET	%	FEET	%	FEET	%	FEET
DRILL 1	150	100	150		0	0	0	0	0
PIPE 2	15	20	3	80	12		0		0
3	15	20	3	25	3.75	15	2.25	40	6
4	60		0	10	6	40	24	50	30
5	1		0	5	0.05	65	0.65	30	0.3
6			0		0		0		0
WEIGHT 1			0		0		0		0
PIPE 2			0		0		0		0
3			0		0		0		0
4			0		0		0		0
DRILL 1	59		0	5	2.95	65	38.35	30	17.7
COLLAR 2			0		0		0		0
3			0		0		0		0
4			0		0		0		0
5			0		0		0		0
TOTAL	300		156		24.75		65.25		54

	BBL OIL=	BBL WATER=	BBL MUD=	BBL GAS =	HRS OPEN	BBL/DAY
	0.3244215	0.5700495	0.602739	2.21832	1	7.786116
						13.681188



15-163-23218-00-00

ORIGINAL

INITIAL FLOW

RECORDER #	22150	DST #	2
TIME(MIN)	PRESSURE	<>	PRESSURE
3	96.6		96.6
6	97.3		0.7
9	99.6		2.3
12	98.1		-1.5
15	96.6		-1.5
18	97.3		0.7
21	98.8		1.5
24	101.1		2.3
27	102.6		1.5
30	104.8		2.2

FINAL FLOW

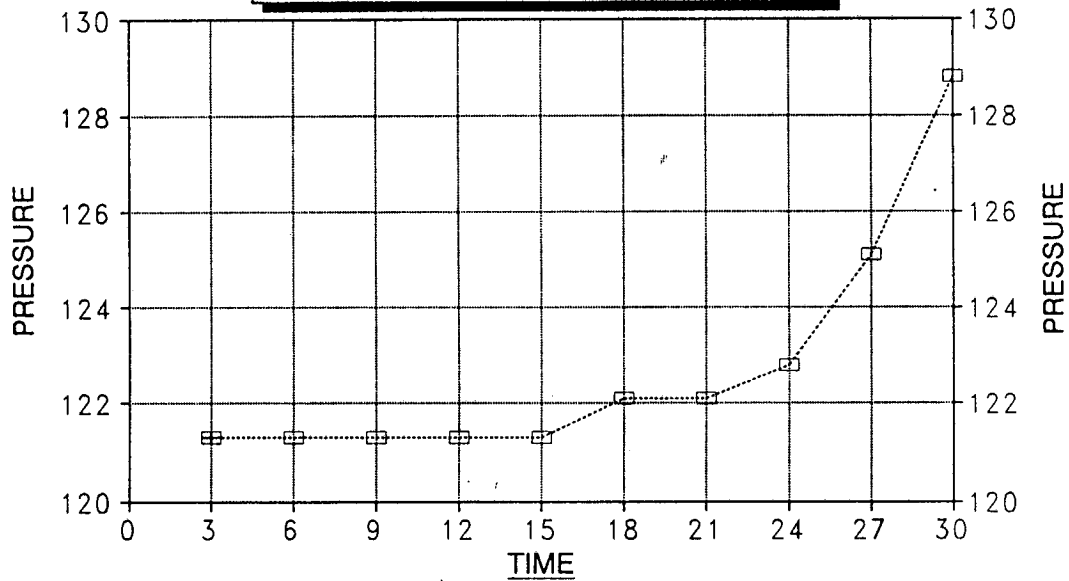
RECORDER #	22150	DST #	2
TIME(MIN)	PRESSURE	<>	PRESSURE
3	121.3		121.3
6	121.3		0
9	121.3		0
12	121.3		0
15	121.3		0
18	122.1		0.8
21	122.1		0
24	122.8		0.7
27	125.1		2.3
30	128.8		3.7

15-163-23218-00-00

ORIGINAL

DELTA T DELTA P

FINAL FLOW - DST #2



---□--- FISHER #1

INITIAL PRODUCTION CORRECTED TO PSEUDO STEADY FLOW STATE:

42.468

FISHER #1
INITIAL

DST #2
SHUTIN

15-163-23218-00-50

ORIGINAL

30 TOTAL FLOW TIME

Slope 287.64 psi/cycle
P * 931 psi

TIME(MIN)	Pws (psi)	Log <>		Horn T
		Horn T	PRESSURE	
3	473.1	1.041	473.1	11
6	717.4	0.778	244.3	6
9	764.7	0.637	47.3	4
12	786.7	0.544	22.0	4
15	799.7	0.477	13.0	3
18	811.1	0.426	11.4	3
X 21	820.2	0.385	9.1	2
24	828.6	0.352	8.4	2
X 27	837.7	0.325	9.1	2

FISHER #1
FINAL

DST #2
SHUTIN

60 TOTAL FLOW TIME

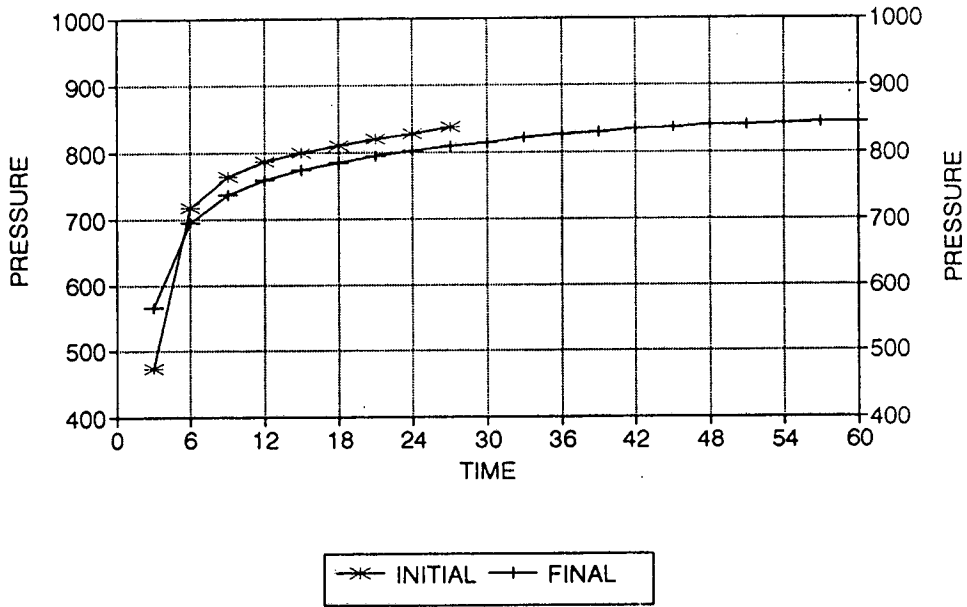
Slope 86.02 psi/cycle
P * 870 psi

TIME(MIN)	Pws (psi)	Log <>		Horn T
		Horn T	PRESSURE	
3	566.3	1.322	566.3	21
6	695.4	1.041	129.1	11
9	736.5	0.885	41.1	8
12	758.6	0.778	22.1	6
15	773.8	0.699	15.2	5
18	785.2	0.637	11.4	4
21	794.3	0.586	9.1	4
24	801.9	0.544	7.6	4
27	808.1	0.508	6.2	3
30	814.1	0.477	6.0	3
33	821.1	0.450	7.0	3
36	826.3	0.426	5.2	3
39	830.1	0.405	3.8	3
42	833.9	0.385	3.8	2
45	836.2	0.368	2.3	2
X 48	840.1	0.352	3.9	2
51	841.5	0.338	1.4	2
54	843.1	0.325	1.6	2
57	843.8	0.312	0.7	2
X 60	844.5	0.301	0.7	2

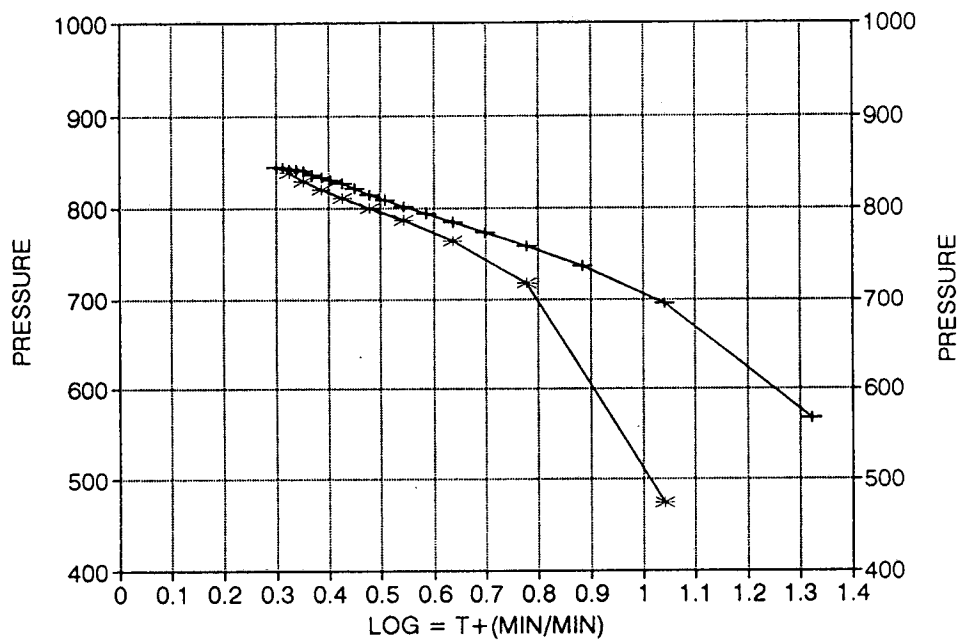
ORIGINAL

15-163-23218-00-00

FISHER #1 / DST #2 DELTA T DELTA P



HORNER PLOT



15-163-23218-00-20
TRILOBITE TESTING L.L.C.
 P.O. Box 362 • Hays, Kansas 67601

ORIGINAL

15-163-23218

No 5723

Test Ticket

Send Reports & Bill to: 2535 Marsh Lane #1208 Carrollton, TX 75006

Well Name & No. Fisher A1 Test No. 2 Date 4-20-93
 Company HDP Zone Tested LKLG-I"
 Address 227 T+C Village Pal Alto Co Elevation KB 2016
 Co. Rep./Geo. Rick Hall / Mike Steadby cont. Emphasis #6 Est. Ft. of Pay 4
 Location: Sec. 5 Twp. 9S Rge. 17W Co. Rooks State Ks
 No. of Copies 4 Distribution Sheet Yes No Turnkey Yes No Evaluation Yes

Interval Tested 3235-3345 Drill Pipe Size 4 1/2 XA
 Anchor Length 110 Top Choke — 1" Bottom Choke — 3/4"
 Top Packer Depth 3230-3235 Hole Size — 7 7/8" Rubber Size — 6 3/4"
 Bottom Packer Depth 3345 Wt. Pipe I.D. — 2.7 Ft. Run
 Total Depth 3459 Drill Collar — 2.25 Ft. Run 59
 Mud Wt. 9.0 lb/gal. Viscosity 48 Filtrate 7.2

Tool Open @ 3:41 PM Initial Blow 1" blow building to bottom of bucket in 25 minutes (surface blow on shut-in)
 Final Blow 1" blow building to bottom of bucket in 30 minutes (1" blow back on shut-in)
 Recovery — Total Feet 150 Feet of Gas In Pipe 150 Flush Tool?

Rec.	Feet Of	% gas	% oil	% water	% mud
<u>15</u>	<u>cl gassy</u>	<u>20</u>	<u>80</u>		
<u>15</u>	<u>Gr. HO+WCM</u>	<u>20</u>	<u>25</u>	<u>15</u>	<u>40</u>
<u>60</u>	<u>SOL WCM</u>	<u>10</u>	<u>40</u>	<u>50</u>	
<u>60</u>	<u>MW</u>	<u>45</u>	<u>05</u>	<u>30</u>	

BHT 102 °F Gravity 38 °API @ 70 °F Corrected Gravity 37 °API
 RW 31 @ 47 °F Chlorides 34,000 ppm Recovery Chlorides 4000 ppm System

(A) Initial Hydrostatic Mud 1696 PSI AK1 Recorder No. 22150 Range 3925
 (B) First Initial Flow Pressure 97 PSI @ (depth) 3239 w/Clock No. 30401
 (C) First Final Flow Pressure 104 PSI AK1 Recorder No. 24174 Range 3050
 (D) Initial Shut-In Pressure 835 PSI @ (depth) 3340 w/Clock No. 25814
 (E) Second Initial Flow Pressure 127 PSI AK1 Recorder No. 11058 Range 4475
 (F) Second Final Flow Pressure 134 PSI @ (depth) 3458 w/Clock No. 31154
 (G) Final Shut-In Pressure 842 PSI Initial Opening 30 Test 6
 (H) Final Hydrostatic Mud 1674 PSI Initial Shut-In 30 Jars

TRILOBITE TESTING L.L.C. SHALL NOT BE LIABLE FOR DAMAGE OF ANY KIND OF THE PROPERTY OR PERSONNEL OF THE ONE FOR WHOM A TEST IS MADE, OR FOR ANY LOSS SUFFERED OR SUSTAINED, DIRECTLY OR INDIRECTLY, THROUGH THE USE OF ITS EQUIPMENT, OR ITS STATEMENTS OR OPINION CONCERNING THE RESULTS OF ANY TEST. TOOLS LOST OR DAMAGED IN THE HOLE SHALL BE PAID FOR AT COST BY THE PARTY FOR WHOM THE TEST IS MADE.

Final Flow 30 Safety Joint
 Final Shut-In 60 Straddle X
 Circ. Sub
 Sampler
 Extra Packer X

Approved By [Signature]

Time Called In AM
Month 5 Day 10 year 93

Work Sheet

alt II

15-163-23218-0000 API

15-163-23,218 ORIGINAL

Mr. Kelly Brannum

Spud Date April 15 - 1993

Expiration Date Aug 15 - 93

Operator: Horizontal Dev. & Prod. Inc.

KCC # 30730

Address: 277 Town & Country Village
Palo Alto, Ca. 94301

Phone # (214) 416-5873

Mike Sternberg

Lease Name Fischer Well # 1

Location NE-SE-SE Sec. 5 Twp 9 Rge 17

County Rock Co

10 3/4" 8 5/8" 210 S.P. CWC w/ _____ sk. cmt.

4 1/2" 5 1/2" - 6" csg. set @ 3457 w/ 125 sk. cmt.

T.D. 3459 Elv. 2011 Andy 1365 Dakota Base 486, 495, 360, 786, 700, 620

D.V. Tool @ _____ Port Collar @ 1374 Perf. @ _____ other _____

Total Amount of cement and blend: 250 60/40 Formix 6% Gel.

RECEIVED
KANSAS CORPORATION COMMISSION
AUG 08 1996

Did cement circulate? yes

Date: 5-10-93

Cement Company: allied Cmt

Ticket No. _____ CONSERVATION DIVISION
WICHITA, KS

Remarks: @ 1374 ^{ft} allied cmt pumped in approx 200 ^{ft} cement
circulation all the way. cement circulated in pit ✓
after 200 ^{ft} cmt

Per Plug @ 3315 - Ret Plug @ 2500.

Alternate II Completion: Rotary Rig _____
Pulling Unit X
Down Csg: _____

W. J. Schmidt
(Witness Sign)

April 93

Phone 913-383-2627, Russell, Kansas
 Phone 316-793-5861, Great Bend, Kansas

15-163-23218-00-00

ORIGINAL

Phone Plainville 913-434-2812
 Phone Ness City 913-798-3843

ALLIED CEMENTING CO., INC.

4222

Home Office P. O. Box 31

Russell, Kansas 67665

New

Date	4-15-93	Sec.	5	Twp.	9 ^s	Range	17	Called Out		On Location		Job Start	8:15 PM	Finish	8:30 PM	
Lease	<i>Fischer</i> <i>Dopita</i>	Well No.	1	Location				<i>Plainville GR 3EE</i>		County	<i>Rooks</i>	State	<i>Ks</i>			
Contractor	<i>Emphasis Drlg</i>											Owner	<i>JES U.S.</i>			
Type Job	<i>Surface</i>											To Allied Cementing Co., Inc. You are hereby requested to rent cementing equipment and furnish cementer and helper to assist owner or contractor to do work as listed.				
Hole Size	<i>12 1/4</i>		T.D.	<i>215</i>												
Csg.	<i>8 1/4</i>		Depth	<i>206 210</i>												
Tbg. Size			Depth													
Drill Pipe			Depth													
Tool			Depth													
Cement Left in Csg.	<i>10-15</i>		Shoe Joint													
Press Max.			Minimum													
Meas Line			Displace	<input checked="" type="checkbox"/>												
Perf.																

EQUIPMENT

Hay's No.	No.	Cementer	<i>Dave</i>
Pumptrk	<i>153</i>	Helper	
No.	No.	Cementer	<i>Mark</i>
Pumptrk		Helper	
		Driver	<i>Steve</i>
Bulktrk	<i>218</i>		
Bulktrk		Driver	

DEPTH of Job

Reference:	<i>Pump trk chg</i>	<i>430.00</i>
	<i>2 1/2 hr mile 11m</i>	<i>24.75</i>
	<i>8 1/2 wooden plug</i>	<i>420.00</i>
	Sub Total	<i>496.75</i>
	Tax	
	Total	

Remarks:
Cement
Cir.

Charge To *Horizontal Dev. & Prod. Inc.*
 Street *2535 Marsh Lane # 808*
 City *Carrollton* State *Tex* 75006
 The above was done to satisfaction and supervision of owner agent or contractor.

Purchase Order No. *Med. Stenberg*

X *Med. Stenberg*

CEMENT

Amount Ordered	<i>135.60</i>	
	<i>3%</i>	<i>4.07</i>
	<i>2%</i>	<i>2.71</i>
	<i>gel</i>	<i>2.00</i>
Consisting of		
Common	<i>81</i>	<i>5.75</i>
Poz. Mix	<i>54</i>	<i>3.00</i>
Gel.	<i>2</i>	<i>2.00</i>
Chloride	<i>4</i>	<i>25.00</i>
Quickset		<i>100.00</i>

Handling	<i>100</i>	<i>135.00</i>
Mileage <i>11 m</i>	<i>04</i>	<i>59.40</i>
Sub Total		<i>922.15</i>
Total		

Floating Equipment

RECEIVED
 KANSAS CORPORATION COMMISSION

AUG 02 1996

CONSERVATION DIVISION
 WICHITA, KS