

15-193-20,026-00-00

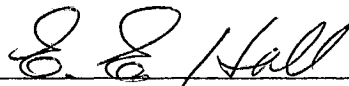
TO BE FILED WITH THE STATE CORPORATION COMMISSION PRIOR TO COMMENCEMENT OF WELL

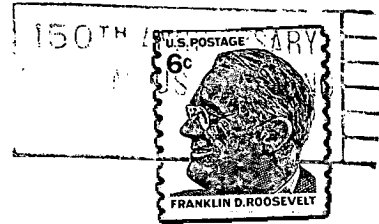
1. Operator Trend Exploration Limited Address 600 Capital Life Bldg., Denver, Colo. 80203
2. Lease name Nye Well No. 1 County Thomas
3. Well Location C NW NW Sec. 16 Township 9S Range 32W
4. Well to be drilled 660 ft. from nearest lease line.
5. Drilling Contractor Gabbert-Jones, Inc. Address 830 Sutton Place, Wichita, Kansas
6. Type of equipment: Rotary  Cable Tool  Approx. date operation to begin December 4, 1969.
7. Well to be drilled for Oil  Gas  Disposal  Input  Estimated Total Depth of Well 4750 ft.
8. Depth of deepest fresh water well within one mile of location 120 ft. If none exists, write NONE.
9. Ground elevation at location is approx. 10 ft. higher or \_\_\_\_\_ ft. lower than ground elevation at water well.
10. Depth of the deepest municipal water well within three miles of location \_\_\_\_\_ ft. If none exists, write NONE  
NONE
11. Operator states that he will set surface pipe at least 25 ft. below all Tertiary or unconsolidated deposits and, taking into consideration differences in ground elevations, that the minimum depth necessary, to the best of his knowledge and belief, to protect all fresh water zones is 160 ft. and operator agrees to set surface pipe at this location to a depth of not less than 275 ft. Alternate 1  Alternate 2 .

REMARKS:

Trend Exploration Limited

Signature of Operator By:





**State Corporation Commission of Kansas  
Conservation Division  
500 Insurance Building  
212 North Market  
Wichita, Kansas 67202**

**RECEIVED  
STATE CORPORATION COMMISSION  
NOV 3 1969  
CONSERVATION DIVISION  
Wichita, Kansas  
11-03-1969**

**(IF PREFERRED, MAIL IN ENVELOPE)**