

15-065-20,096-00-00

TO BE FILED WITH THE STATE CORPORATION COMMISSION PRIOR TO COMMENCEMENT OF WELL

1. Operator Allison & Black Address 1415 Wichita Plaza, Wichita, Ks.
2. Lease name Sutor "A" Well No. 1 County Graham
3. Well Location 100'E SW SW NW Sec. 36 Township 9 South Range 21 West
4. Well to be drilled 330 ft. from nearest lease line.
5. Drilling Contractor B & B Drilling Co. Address Wichita, Kansas
6. Type of equipment: Rotary Cable Tool Approx. date operation to begin Oct. 5, 1967
7. Well to be drilled for Oil Gas Disposal Input Estimated Total Depth of Well 3900 ft.
8. Depth of deepest fresh water well within one mile of location _____ ft. If none exists, write NONE None.
9. Ground elevation at location is approx. _____ ft. higher or _____ ft. lower than ground elevation at water well.
10. Depth of the deepest municipal water well within three miles of location _____ ft. If none exists, write NONE None
11. Operator states that he will set surface pipe at least 25 ft. below all Tertiary or unconsolidated deposits and, taking into consideration differences in ground elevations, that the minimum depth necessary, to the best of his knowledge and belief, to protect all fresh water zones is 200 ft. and operator agrees to set surface pipe at this location to a depth of not less than 200 ft. Alternate 1 Alternate 2 .

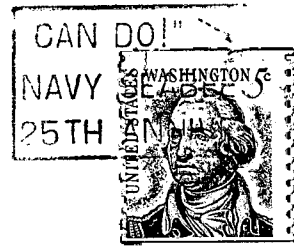
REMARKS:

ALLISON & BLACK

Signature of Operator

Thomas E. Black

Partner



**State Corporation Commission of Kansas
Conservation Division
500 Insurance Building
212 North Market
Wichita, Kansas 67202**

RECEIVED
STATE CORPORATION COMMISSION
OCT 5 1967
10-5-67
CONSERVATION DIVISION
Wichita, Kansas

(IF PREFERRED, MAIL IN ENVELOPE)