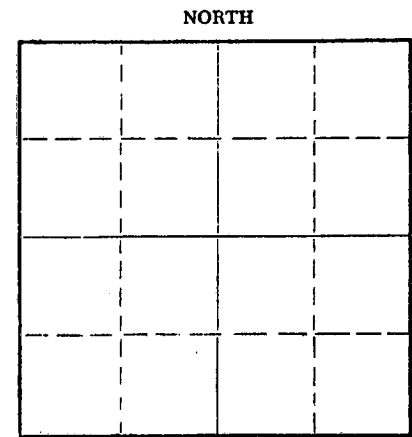


15-065-20076-00-00

Give All Information Completely  
Make Required Affidavit  
Mail or Deliver Report to:  
Conservation Division  
State Corporation Commission  
211 No. Broadway  
Wichita, Kansas

WELL PLUGGING RECORD

Graham County, Sec. 6 Twp. 9S Rge. (E) 25 (W)



Location as "NE/CNW%SW%" or footage from lines C SE NW  
Lease Owner Imperial Oil Company  
Lease Name Springer Well No. 1  
Office Address 780 4th National Bldg., Wichita, Kansas 67202  
Character of Well (completed as Oil, Gas or Dry Hole) Dry Hole  
Date well completed 8-20 19 67  
Application for plugging filed 8-20 19 67  
Application for plugging approved 8-20 19 67  
Plugging commenced 8-20 19 67  
Plugging completed 8-20 19 67

Reason for abandonment of well or producing formation No commercial quantities of oil was found.

If a producing well is abandoned, date of last production 19  
Was permission obtained from the Conservation Division or its agents before plugging was commenced? Yes

Name of Conservation Agent who supervised plugging of this well W. L. Nichols, Moreland, Kansas  
Producing formation \_\_\_\_\_ Depth to top \_\_\_\_\_ Bottom \_\_\_\_\_ Total Depth of Well 4110 Feet  
Show depth and thickness of all water, oil and gas formations.

OIL, GAS OR WATER RECORDS

CASING RECORD

FORMATION	CONTENT	FROM	TO	SIZE	PUT IN	PULLED OUT
	surface casing at	208'		8 5/8"	150 sacks.	Not pulled

Describe in detail the manner in which the well was plugged, indicating where the mud fluid was placed and the method or methods used in introducing it into the hole. If cement or other plugs were used, state the character of same and depth placed, from 4110 feet to \_\_\_\_\_ feet for each plug set.

Set first plug at 2030' with 100 sacks cement.  
Set second plug at 210' with 20 sacks cement.  
Set third plug at 40' with 10 sacks cement.

RECEIVED  
STATE CORPORATION COMMISSION

SEP 12 1967

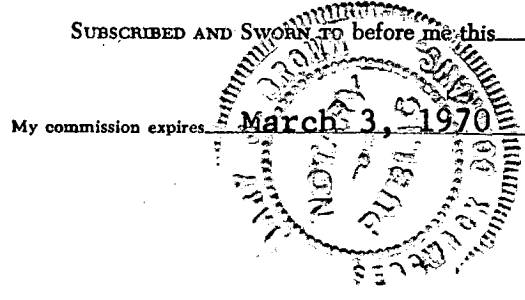
CONSERVATION DIVISION  
Wichita, Kansas 9-18-67

(If additional description is necessary, use BACK of this sheet)

Name of Plugging Contractor Imperial Oil Company  
Address 780 Fourth National Bldg., 110 No. Market, Wichita, Kansas 67202

STATE OF KANSAS, COUNTY OF SEDGWICK, ss.  
William A. Sladek (employee of owner) or (owner or operator) of the above-described well, being first duly sworn on oath, says: That I have knowledge of the facts, statements, and matters herein contained and the log of the above-described well as filed and that the same are true and correct. So help me God. IMPERIAL OIL COMPANY  
(Signature) William A. Sladek  
780 Fourth National Bldg., Wichita, Ks.  
(Address)

SUBSCRIBED AND SWORN TO before me this 28th day of August, 19 67



Mary J. Brown  
Mary J. Brown  
Notary Public.

DRILLER'S LOG

15-065-20076-00-00

Imperial Oil Company  
780 Fourth National Bldg.  
Wichita, Kansas 67202

Springer #1  
C SE NW Sec. 6-9S-25W  
Graham County, Kansas

Total Depth: 4110 ft.

Elevation: 2579 K.B.

Commenced: 8-14-67

Completed: 8-21-67  
Dry Hole

Contractor: Imperial Oil Company - Rig #2

Casing Record: Set 8 5/8" surface casing at 208 feet with 150 sacks of cement.

Figures indicate bottom of formations:

	<u>Sample Tops</u>	
70' Shale-sand	Top Anhydrite	2290 (f 289)
208' Sand-shale	Base Anhydrite	2330 (f 249)
1880' Shale-shells	Heebner	3846 (-1267)
2062' Dakota Sand	Toronto	3868 (-1289)
2290' Shale	Lansing	3888 (-1309)
2330' Anhydrite	Rotary Total Depth	4110 (-1531)
2890' Shale-shells		
3015' Lime-shale		
3300' Shale-lime		
3395' Lime-shale		
3550' Shale-lime		
3647' Lime-shale		
4110' Lime		
<u>4110' Rotary Total Depth</u>		

We hereby certify this to be a correct and accurate log of the above described well, as shown on the daily drilling reports.

IMPERIAL OIL COMPANY

By William A. Sladek  
William A. Sladek

Subscribed and sworn to before me this 28th day of August, 1967.

Mary J. Brown  
Mary J. Brown, Notary Public

My Commission Expires:  
March 3, 1970



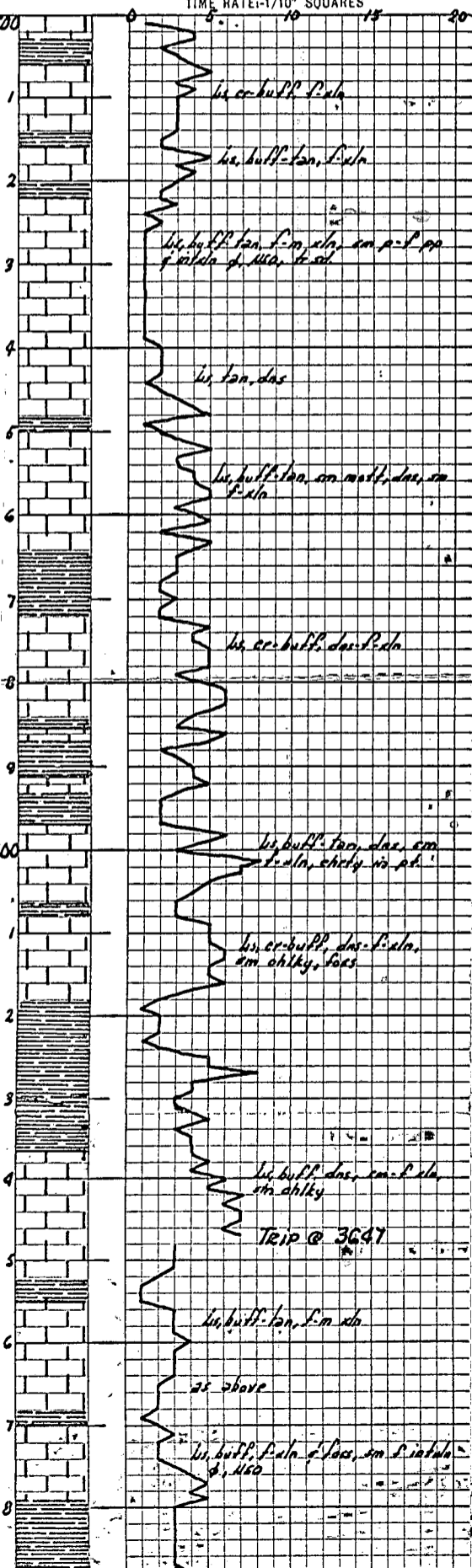
STATE <b>KANSAS</b>		COMPANY <b>IMPERIAL OIL CO</b>	
COUNTY <b>GRAHAM</b>		FARM <b>SPRINGER</b>	WELL NO. <b>1</b>
TOWNSHIP <b>6</b>		SURVEY <b>19-06S-20076-00-00</b>	
RANGE <b>25 W</b>		SECTION <b>C SE NW</b>	
TOTAL DEPTH <b>4110</b>		CONTRACTOR <b>Company Tools</b>	
COMMENCED <b>8-14-67</b>		COMPLETED <b>8-21-67</b>	
REMARKS		<b>Robert C. Jewell - Geol</b>	
ALTITUDE <b>2579 KB</b>		PRODUCTION <b>0.5 A</b>	

**CASING RECORD**

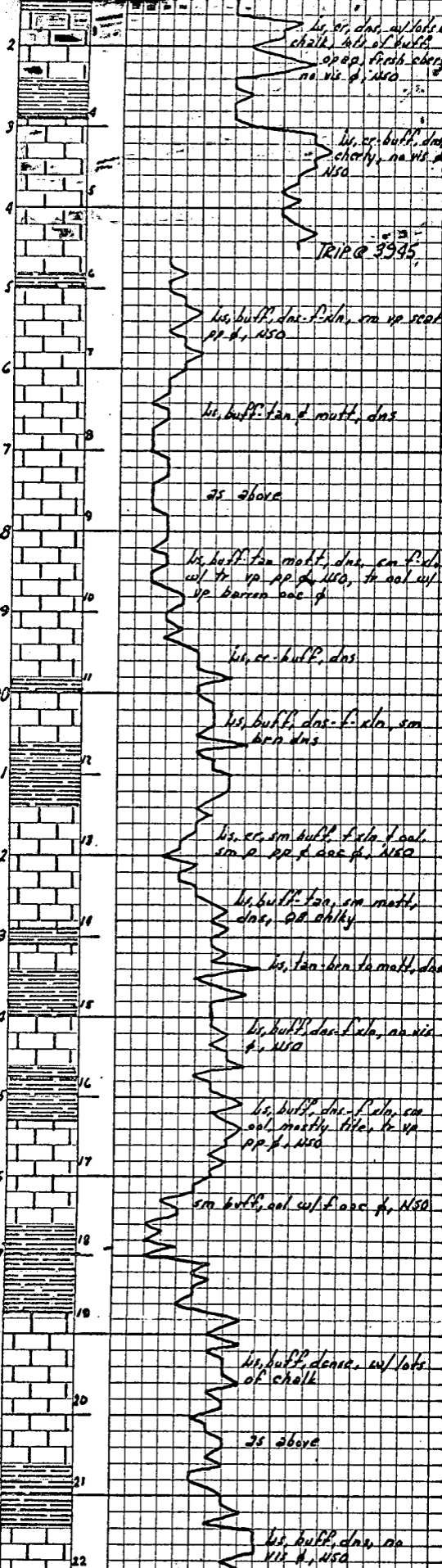
**5/8" @ 210/150 SX.**

SHOT	QUARTS	BETWEEN
------	--------	---------

TIME RATE SCALE: 1/10" = 1 MINUTES  
 450 ROSS-MARTIN CO. TULSA 1, OKLAHOMA PRINTED IN U.S.A.

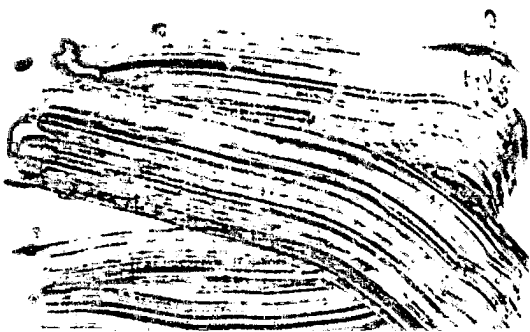






ROTARY TOTAL DEPTH 4110  
 (-1531)

15-065-20076-00-00



ROBERT C. LEWELLYN

*Petroleum Geologist*

15-065-20076-00-00

Area Code 316 Office Phone: AM 5-5981 | Res. Phone: PA 2-4266 | 113 Insurance Building | Wichita, Kansas 67202

GEOLOGICAL REPORT

IMPERIAL OIL COMPANY  
NO. 1 SPRINGER  
C SE NW SEC. 6-9S-25W  
GRAHAM COUNTY, KANSAS

GENERAL INFORMATION:

DRILLING CONTRACTOR: Company Tools  
SPUDDED: August 14, 1967 DRILLING COMPLETED: August 21, 1967  
CASING: 8 5/8" @ 210' KBM/150 sx.  
DRILLING TIME: 1 foot time by Geograph from 3500 to RTD  
SAMPLES: 10 foot samples from 3500 feet to 3750 feet  
5 foot samples from 3750 feet to RTD  
(delivered to Kansas Geological Society)  
ELECTRICAL SURVEYS: No logs  
DRILL STEM TESTS: No tests  
DRILLING MUD: Davis Mud Co.  
DIRECTIONS: Morland, Kansas, 3 1/2 West, 3 1/2 South.

ELEVATIONS: 2579 KB 2576 DF 2574 GL

FORMATION TOPS: (Sample)

Anhydrite 2290 (+ 289)  
Heebner 3846 (-1267)  
Toronto 3868 (-1289)  
Lansing 3888 (-1309)  
ROTARY TOTAL DEPTH 4110 (-1531)

**RECEIVED**  
STATE CORPORATION COMMISSION

**SEP 12 1967**

**CONSERVATION DIVISION**  
Wichita, Kansas

LITHOLOGIC DESCRIPTION OF ZONES OF INTEREST: (Refer to attached sample log for complete description of all formations.)

LANSING-KANSAS CITY ZONES:

3888-3891 Limestone, cream to buff, dense, with lots of chalk,  
(Top) no visible porosity, no show of oil.  
3916-3923 Limestone, cream, dense, no visible porosity, no show  
(30) of oil.

15-065-20076-00-00

Imperial Oil Company - #1 Springer

page two

- 3929-3932 Limestone, cream to buff, dense, no visible porosity,  
(45) no show of oil.
- 3950-3958 Limestone, buff, dense to finely crystalline, some very  
(60-70) poor scattered pinpoint porosity, no show of oil.
- 3981-3987 Limestone, buff to tan mottled, dense, some finely  
(90) crystalline with trace of very poor pinpoint porosity,  
no show of oil, trace oolitic with barren ooliticastic  
porosity.
- 4014-4023 Limestone, cream, some buff, finely crystalline and oolitic,  
(140) some poor pinpoint and ooliticastic porosity, no show of oil.
- 4040-4046 Limestone, buff, dense to finely crystalline, no visible  
(160) porosity, no show of oil.
- 4053-4066 Limestone, buff, finely crystalline with trace very poor  
(180) pinpoint porosity, no show of oil, some buff oolitic with  
fair ooliticastic porosity, no show of oil.
- 4077-4085 Limestone, buff, dense, lots of chalk, no visible porosity,  
(200) no show of oil.
- 4104-4110 Limestone, buff, dense, no visible porosity, no show of oil  
(220)

DRILL STEM TESTS: No tests.

RECOMMENDATIONS:

Due to the poor structural position of the No. 1 Springer and the absence of commercial shows, it was recommended that this well be plugged and abandoned.

---

Robert C. Lewellyn,  
Petroleum Geologist.

RCL/mlb  
Enc.



Imperial Oil Company - #1 Springer

One foot drilling time:

3500-3520	1-4-4-2-3	4-5-3-4-3	3-3-3-3-2	2-5-3-4-3
40	2-2-3-1-2	1-1-1-1-1	1-1-1-1-1	1-1-1-1-2
60	2-2-2-1-2	3-4-5-1-2	3-5-3-3-4	4-5-5-3-4
80	5-2-5-4-3	3-3-2-2-3	2-2-5-4-4	5-5-5-3-5
3600	6-6-6-4-3	6-5-2-3-4	4-5-3-2-2	2-2-6-5-3
3600-3620	8-7-7-5-4	3-3-3-5-5	5-6-6-5-5	6-4-2-1-2
40	2-2-1-2-5	5-8-4-4-3	3-4-5-3-4	4-4-5-4-6
60	5-7-6-7-7	6-7-3-3-3	3-2-1-1-1	3-3-3-3-4 Trip @3647'
80	3-3-3-3-2	2-2-2-1-2	3-2-2-2-3	4-5-4-5-3
3700	3-3-3-3-3	3-3-4-3-2	2-2-3-3-3	1-1-2-3-3
3700-3720	4-4-2-4-2	5-3-2-3-3	2-2-2-4-2	2-2-2-2-3
40	3-3-1-2-2	2-3-3-3-3	3-3-3-3-5	4-5-5-4-2
60	3-4-3-3-2	2-3-2-1-1	1-1-1-1-1	1-2-2-2-3
80	3-4-3-3-3	4-4-4-2-2	3-5-5-6-7	5-4-5-3-5
3800	4-4-3-3-3	3-4-3-2-2	2-2-2-3-6	4-4-5-2-3 CFS @3800'
3800-3820	3-5-4-2-3	3-3-2-2-3	4-5-2-7-5	5-5-5-4-5
40	3-4-4-4-3	3-4-3-3-3	2-3-2-2-2	2-2-1-1-1
60	3-4-3-7-4	5-4-2-3-7	8-7-6-6-6	6-6-6-6-6
80	6-7-7-7-7	6-7-7-8-8	8-8-9-8-7	5-6-6-6-7
3900	6-4-3-4-4	4-4-4-5-4	5-8-8-10-10	5-7-7-6-6 Trip @3895'
3900-3920	7-6-6-8-7	9-* -9-8-8	7-8-8-7-7	7-11-10-10-8 *no time
40	9-12-10-7-7	8-7-7-7-8	12-12-13-12-12	11-11-10-11-10
60	10-11-12-11-11	3-3-4-3-3	4-4-5-4-3	4-4-5-4-4 Trip @3945'
80	3-3-3-2-3	3-2-2-2-2	3-3-3-2-2	2-2-3-2-3
4000	3-2-3-3-2	2-3-4-4-3	3-2-3-3-4	4-5-7-5-5
4000-4020	6-* -6-6-5	8-5-6-6-7	7-7-6-5-6	5-5-4-4-3 *1' corrn.
40	5-4-4-5-5	6-7-6-7-6	6-7-6-9-5	6-8-6-6-6 CFS @4030'
60	6-7-6-7-7	8-5-6-6-7	8-6-7-8-7	7-6-7-6-6
80	5-5-3-4-4	2-3-2-4-2	6-5-6-5-5	4-6-8-7-6 CFS @4070'
4100	8-6-7-7-7	8-6-7-7-5	6-6-7-7-5	7-5-5-6-7
4100-4110	7-8-6-9-9	9-9-7-8-8		CFS @4110'

RTD