

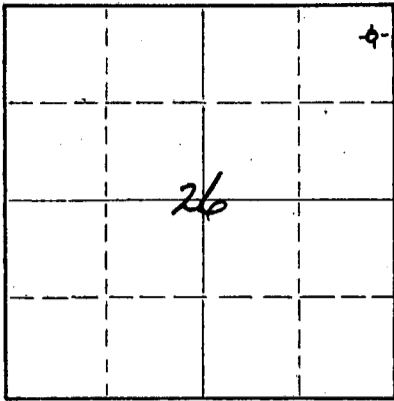
15-173-00546-00-00

STATE OF KANSAS
STATE CORPORATION COMMISSION

Give All Information Completely
Make Required Affidavit
Mail or Deliver Report to:
Conservation Division
State Corporation Commission
800 Bittling Building
Wichita, Kansas

WELL PLUGGING RECORD

NORTH



Locate well correctly on above
Section Plat

Sedgwick County, Sec. 26 Twp. 28S Rge. 2 (E) (W)
Location as "NE/CNWxSWx" or footage from lines 660' (S) of (N) line, 330' (W)
Lease Owner John P. Gaty of (E) line
Lease Name Trustee Well No. 1
Office Address Wichita, Kansas
Character of Well (completed as Oil, Gas or Dry Hole) Dry hole
Date well completed 6-3- 19 55
Application for plugging filed 6-3 19 55
Application for plugging approved 6-3 19 55
Plugging commenced 6-3- 19 55
Plugging completed 6-3- 19 55
Reason for abandonment of well or producing formation Dry hole

If a producing well is abandoned, date of last production Not Applicable 19
Was permission obtained from the Conservation Division or its agents before plugging was commenced? Yes

Name of Conservation Agent who supervised plugging of this well S. S. Greider
Producing formation None Depth to top Bottom Total Depth of Well 3,350 Feet
Show depth and thickness of all water, oil and gas formations.

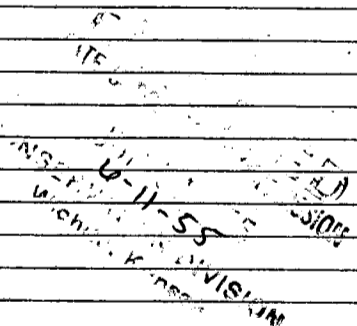
OIL, GAS OR WATER RECORDS

CASING RECORD

FORMATION	CONTENT	FROM	TO	SIZE	PUT IN	PULLED OUT

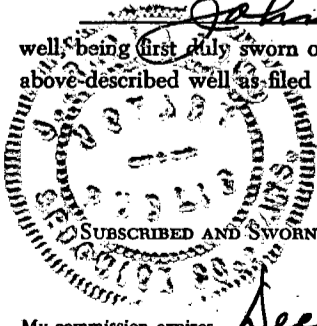
Describe in detail the manner in which the well was plugged, indicating where the mud fluid was placed and the method or methods used in introducing it into the hole. If cement or other plugs were used, state the character of same and depth placed, from feet to feet for each plug set.

Plugged mud 3,350' to 200'
Cement 200' to 165'
Crushed rock 165' to 160'
Run drill pipe in hole to test bridge, three (3) different times. Bridge solid, held up pipe. Mixed 25 sacks cement and put in hole through five (5) joints drill pipe. 160' to 90'
Mud 90' to 40'
Cement 40' to 5'
Cut off surface pipe three (3) feet below ground level.



(If additional description is necessary, use BACK of this sheet)
Name of Plugging Contractor Harold U. Martin
Address Box 525, Arkansas City, Kansas

STATE OF Kansas COUNTY OF Sedgwick, ss.
John P. Gaty (employee of owner) or (owner or operator) of the above-described well, being first duly sworn on oath, says: That he has knowledge of the facts, statements, and matters herein contained and the log of the above-described well as filed and that the same are true and correct. So help me God.



(Signature) John P. Gaty
11 Express Dr., Wichita, Kans. (Address)
June 9th day of June, 1955

SUBSCRIBED AND SWORN TO before me this 9th day of June, 1955
My commission expires December 12, 1955
J. Arnold Dowd Notary Public.

PLUGGING
FILE SEC 26 T 28 R 2E
BOOK PAGE 124 LINE 14

HAROLD U. MARTIN

Arkansas City, Kansas

Drilling Log

TRUSTEE # 1

Operator: JACK CATY

Formation

	<u>From</u>	<u>To</u>
Top soil and clay	0	30
Clay	30	80
Shale and shells	80	95
Lime and shale strks.	95	132
Lime with shale strks.	132	180
Lime with shale strks.	180	250
Shale	250	270
Lime and shale	270	445
Lime and shale strks.	445	560
Shale and shells	560	600
Shale and lime	600	655
Shale and shells	655	855
Shale and shells	855	1190
Shale and lime strks.	1190	1210
Lime	1210	1320
Shale and lime	1320	1430
Shale and lime	1430	1580
Shale and lime	1580	1595
Lime with shale strks.	1595	1695
Sandy lime and shale	1695	1763
Shale and lime	1763	1915
Shale and lime	1915	2015
Sandy lime	2015	2075
Shale and lime	2075	2120
Lime with shale strks.	2120	2140
Lime	2140	2240
Lime and shale	2240	2390
Lime and shale	2390	2525
K. C. Lime and shale	2525	2635
Lime and shale	2635	2645
Shale and lime	2645	2751
Shale and lime	2751	2796
Lime with shale strks.	2796	2858
Lime and shale strks.	2858	2931
Shaled lime	2931	2987
Top (Miss.)	2987	2992
Lime (Miss.)	2992	3032
Miss. lime and shale	3032	3045
Lime and strks. of chert	3045	3050
Miss. chat and shale	3050	3065
Lime and shale	3065	3096
Lime and shale	3096	3172
Lime and shale	3172	3237
Shale	3237	3244
Shale and sand strks.	3244	3307
Sand and shale	3307	3345
Arbuckle	3345	3350
Total Depth		3350

Plugged mud 3,350' to 200'
Cement 200' to 160'

Run drill pipe in hole to test bridge, three different times. Bridge solid, held up pipe. Mixed 25 sacks cement and put in hole thru five (5) joints drill pipe.

Mud 160' to 90'
Cement 90' to 40'

Cut off surface pipe three (3) feet below ground level.

PLUGGING
 REC SEC 26 T 28 R 2E
 BOOK PAGE 124 LINE 14