

GEOLOGIST'S REPORT

DRILLING TIME AND SAMPLE LOG

COMPANY Yoth Oil Co., etal
 LEASE # 1 Hoover
 FIELD Butwick
 LOCATION C E/2 SE NW
 SEC. 8 TWSP. 26^s RNG. 3^E
 COUNTY Butler STATE Kansas

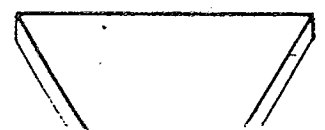
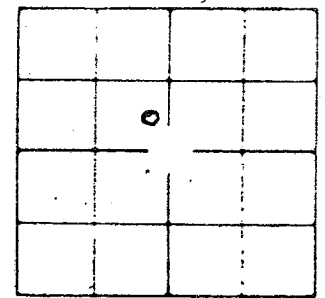
ELEVATIONS
 K.B. 1345
 D.F. 1343
 G.L. 1340
 Measurements Are All
 From K.B.

CONTRACTOR Dunbar Drilling
 COMM _____ COMP. 11/17/80
 RTD 2817' LTD _____
 No. of DST's 1 No. of CORES None

CASING SURF. 206' - 8 5/8"
 PROD. 2814'
 ELECTRICAL SURVEYS
None

SAMPLES SAVED FROM 2250' TO 2817'
 DRILLING TIME KEPT FROM 2250' TO 2817'
 SAMPLES EXAMINED FROM 2250' TO 2817'
 GEOLOGICAL SUPERVISION FROM 2550 TO T.O.
 GEOLOGIST ON WELL M. Eugene Tarline

FORMATION TOPS
 Kansas City 2324 (- 979)
 Base Kansas City 2487 (- 1142)
 Mississippian 2786 (- 1441)
 Total Depth 2817 (- 1472)
 D.S.T. - Western Testers
 (results listed on log)
 Cementing: - United



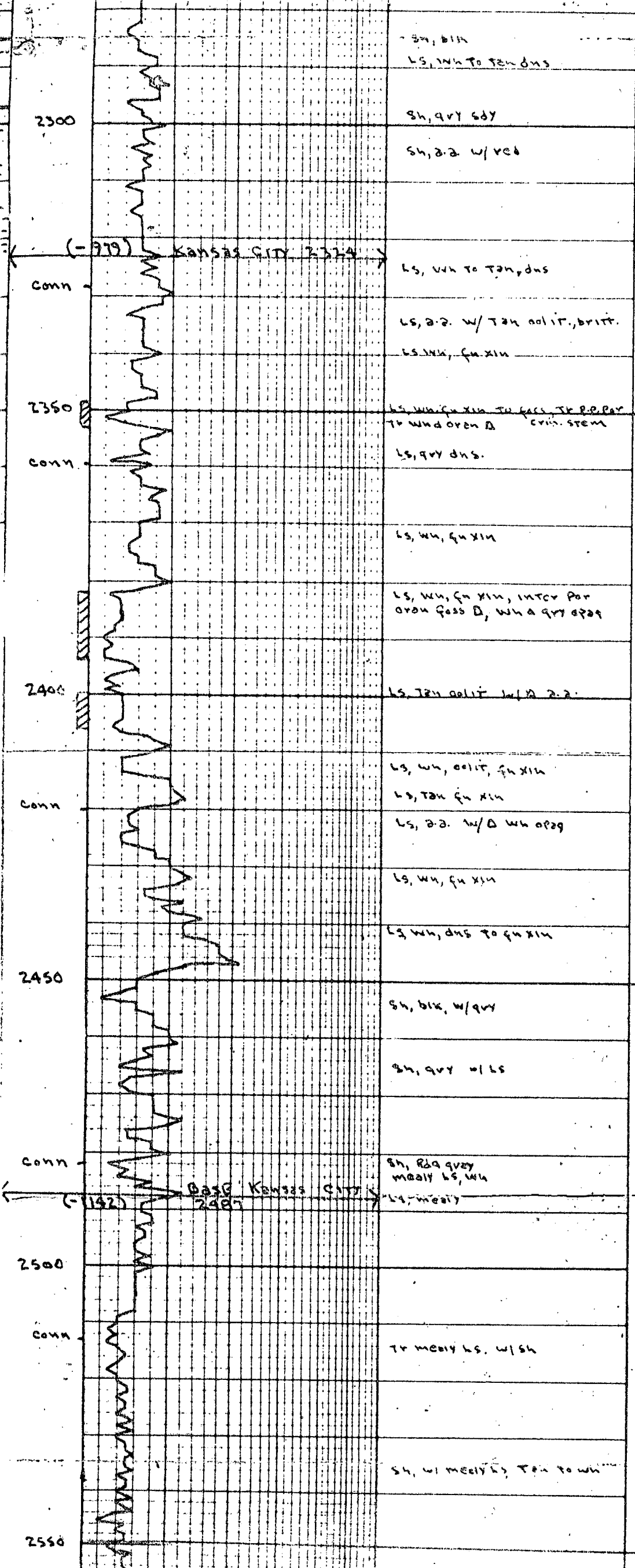
LEGEND

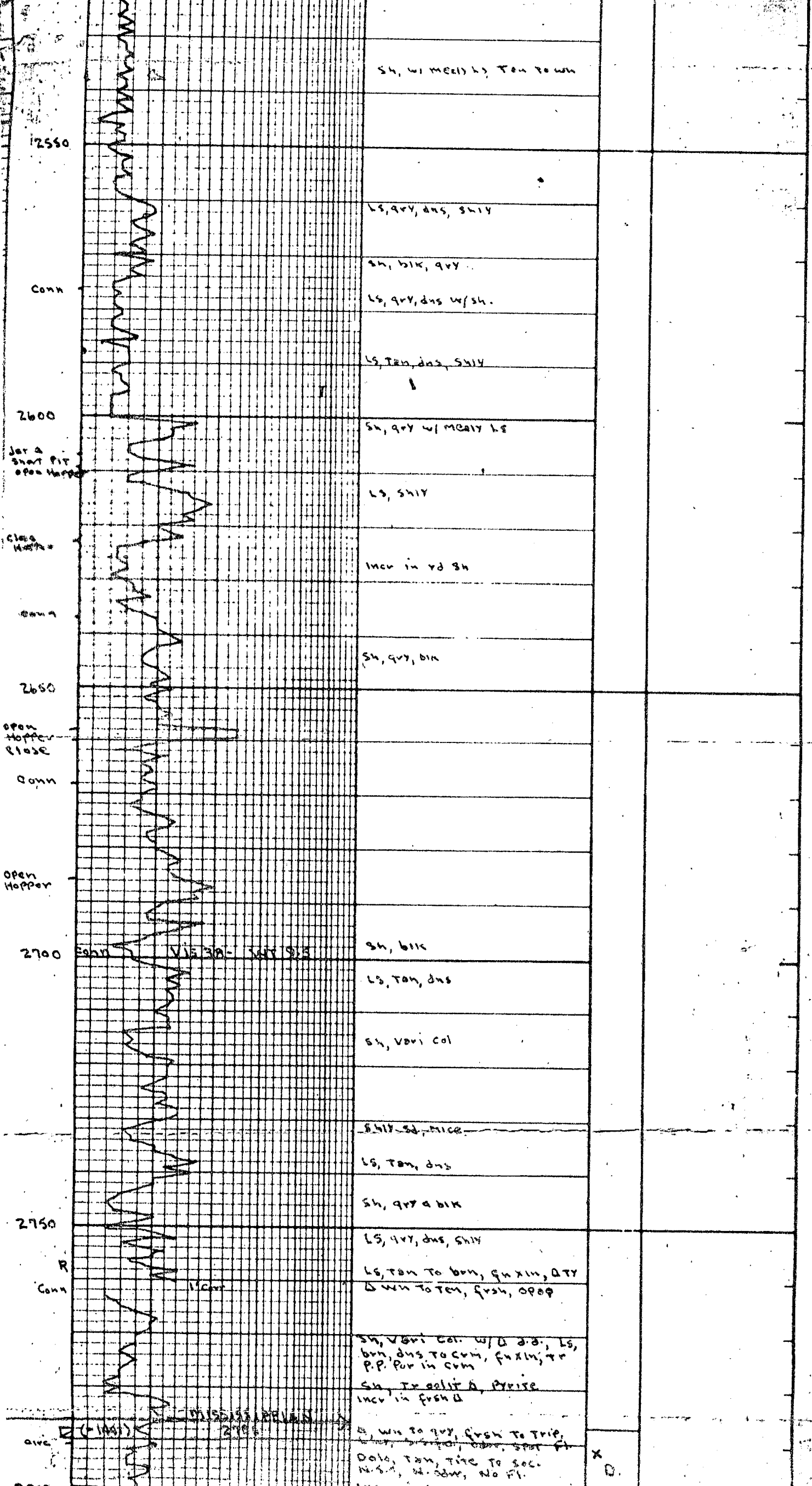
- ANHYDRITE
- SALT
- SANDSTONE
- SHALE
- CARB SH.
- LIMESTONE
- COL LIME
- CHERT
- DOLOMITE

SCALE 100

DEPTH	DRILLING TIME - in Minutes Per Foot	SAMPLE DESCRIPTIONS	OIL SHOWS	REMARKS
2250	5			
2300	10			
	15			
	20			
	25			
		SH, QVY		
		TV R. SH, W/TLS.		
		SH, QVY		
		LS, W/TLS		
		SH, QVY		
		SH, QVY		

15-015-21548-00-0





sh, w/ medly ls, Tan brown

2550

ls, qtz, dms, shly

Conn

sh, blk, qtz

ls, qtz, dms w/ sh.

ls, Tan, dms, shly

2600

sh, qtz w/ medly ls

Jar & Short Pit open Hopper

ls, shly

Close Hopper

Incl in rd sh

Conn

sh, qtz, blk

2650

Open Hopper Close

Conn

Open Hopper

2700

2700-2750-3479.5

sh, blk

ls, Tan, dms

sh, vari col

~~shly sh, piece~~

ls, Tan, dms

sh, qtz & blk

2750

ls, qtz, dms, shly

R Conn

ls, Tan to bun, gn xlm, qtz

ls w/ tan to tan, fresh, opep

sh, vari col. w/ d. d., ls, bun, dms to com, fuxlm, tr P.P. Por in com

sh, Tr calit A, Pyrite Incl in fresh ls

2800

MISSING DEVIATION

ls w/ tan to qtz, fresh to trip, opep, opep, opep. Spot fl.

Oils, Tan, Tite to sec. N.S.M., W. adw, No fl.

X O

Open Hopper

2700

2700 2700- 2700 9.5

Sh, blk

Ls, Tan, dms

Sh, vari col

Sh, blk, mica

Ls, Tan, dms

Sh, grey blk

2750

R Conn

Ls, grey, dms, sh

Ls, Tan to blk, fuxin, QTY
Down to Tan, fresh, OPO

Sh, vari col. w/ d. d.; Ls,
blk, dms to con, fuxin, tr
P.P. Por in con

Sh, Tr calc, Pyrite
Incr in fresh

2800

(-144)

2786

D, wh to grey, fresh to trip,
Calc, sh, mica, odor. Spot fl
Calc, Tan, Tite to soc.
N.S. 1, N. odw, No Fl.

Incr in fresh, wh to grey
D
Calc, Tan, Semi soc, Sgt to
hd. w/d 2-2.

X
D.
S.
T.

2850

2850

D wh, fresh to west, P.P. to
P.P. to west, odor, fl, good
Show FO.

X
X

N.I.D. 2811 (C-1012)
DRILL STEM TEST 2811-2817

Good blow thru out
I.H.P. 1383
INIT FLOW 20 min 98-150
INIT C.I.P. 30 min 200
Final Flow 40 min 215-265
Final C.I.P. 20 min 250
I.H.P. 1383

RECOVERED

120 FEET GROSS
30 FEET VERY HEAVY OIL (CUT MUD
30 FEET HEAVY OIL (CUT MUD
150 FEET HEAVY OIL (CUT MUD
(CUT MUD, RATS MUD)

TEMP: 104°