

KANSAS DRILLERS LOG

API No. 15 - 065 - 21074-00-00
 County Number

S. 31 T. 8S R. 23 ^{EX} _W

Loc. SE NE

County GRAHAM

Operator
 VOYAGER PETROLEUMS, INC.

Address
 C/O GODSEY EARLOUGHER, 6600 S YALE, TULSA OK 74136

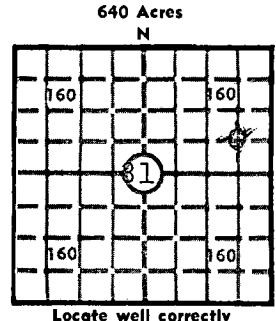
Well No. 1 Lease Name BRASSFIELD

Footage Location
1980 feet from (N) line 660 feet from (E) line

Principal Contractor C-G DRILLING CO., INC. Geologist CHARLIE KING

Spud Date 11/11/78 Total Depth 4280 P.B.T.D.

Date Completed 11/21/78 Oil Purchaser



Locate well correctly
 Elev.: Gr. _____
 DF _____ KB 2380

CASING RECORD

Report of all strings set — surface, intermediate, production, etc.

Purpose of string	Size hole drilled	Size casing set (in O.D.)	Weight lbs/ft.	Setting depth	Type cement	Sacks	Type and percent additives
SURFACE	12 1/4"	8 5/8"	28#	252.60	Common	175	3% CC

LINER RECORD

PERFORATION RECORD

Top, ft.	Bottom, ft.	Sacks cement	Shots per ft.	Size & type	Depth interval

TUBING RECORD

Size	Setting depth	Packer set at

ACID, FRACTURE, SHOT, CEMENT SQUEEZE RECORD

Amount and kind of material used	Depth interval treated

RECEIVED
 STATE CORPORATION COMMISSION
 NOV 20 1978
 CONSERVATION DIVISION
 Wichita, Kansas
 11-29-78

INITIAL PRODUCTION

Date of first production		Producing method (flowing, pumping, gas lift, etc.)			
RATE OF PRODUCTION PER 24 HOURS	Oil	Gas	Water	Gas-oil ratio	
	bbls.	MCF	bbls.		CFPB
Disposition of gas (vented, used on lease or sold)			Producing interval (s)		

INSTRUCTIONS: As provided in KCC Rule 82-2-125, within 90 days after completion of a well, one completed copy of this Drillers Log shall be transmitted to the State Geological Survey of Kansas, 4150 Monroe Street, Wichita, Kansas 67209. Copies of this form are available from the Conservation Division, State Corporation Commission, 3830 So. Meridian (P.O. Box 17027), Wichita, Kansas 66217. Phone AC 316-522-2206. If confidential custody is desired, please note Rule 82-2-125. Drillers Logs will be on open file in the Oil and Gas Division, State Geological Survey of Kansas, Lawrence, Kansas 66044.

Operator
VOYAGER PETROLEUMS INC

DESIGNATE TYPE OF COMP.: OIL, GAS,
DRY HOLE, SWDW, ETC.:
DRY HOLE

Well No.
1

Lease Name
BRASSFIELD

S 31 T 8 R 23^K_W

WELL LOG

Show all important zones of porosity and contents thereof; cored intervals, and all drill-stem tests, including depth interval tested, cushion used, time tool open, flowing and shut-in pressures, and recoveries.

SHOW GEOLOGICAL MARKERS, LOGS RUN, OR OTHER DESCRIPTIVE INFORMATION.

FORMATION DESCRIPTION, CONTENTS, ETC.	TOP	BOTTOM	NAME	DEPTH
SHALE & SAND	0	1873		
SHALE & LIME	1873	2072		
QNTY	2072	2105		
SHALE	2105	2916		
SHALE & LIME	2916	3396		
LIME & SHALE	3396	3797		
LIME & RTD	3797	4280		

USE ADDITIONAL SHEETS, IF NECESSARY, TO COMPLETE WELL RECORD.

Date Received

Debra L Heersche

Signature

DEBRA L HEERSCHER, OFFICE MGR

Title

11/28/78

Date