

100

TYPE OR PRINT

NOTICE OF INTENTION TO DRILL

C-1

15-015-20,276-00-00

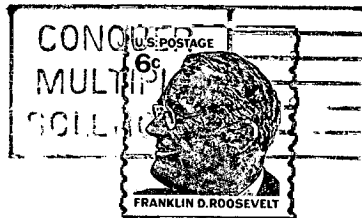
TO BE FILED WITH THE STATE CORPORATION COMMISSION PRIOR TO COMMENCEMENT OF WELL

1. Operator Commercial Oil Inc Address 5252 N. Broadway Wichita
2. Lease name RAMSAY Well No. 3 County BUTLER
3. Well Location NW SE NE Sec. 4 Township 26^S Range 3E
4. Well to be drilled 330 ft. from nearest lease line.
5. Drilling Contractor SERO PEE Address Wichita Kansas
6. Type of equipment: Rotary Cable Tool Approx. date operation to begin July 11 1969
7. Well to be drilled for Oil Gas Disposal Input Estimated Total Depth of Well 2725 ft.
8. Depth of deepest fresh water well within one mile of location 30 ft. If none exists, write NONE
9. Ground elevation at location is approx. 5 ft. higher or _____ ft. lower than ground elevation at water well.
10. Depth of the deepest municipal water well within three miles of location _____ ft. If none exists, write NONE
NONE
11. Operator states that he will set surface pipe at least 25 ft. below all Tertiary or unconsolidated deposits and, taking into consideration differences in ground elevations, that the minimum depth necessary, to the best of his knowledge and belief, to protect all fresh water zones is 200 ft. and operator agrees to set surface pipe at this location to a depth of not less than 200 ft. Alternate 1 Alternate 2 .

REMARKS:

Signature of Operator W.P. Summers





**State Corporation Commission of Kansas
Conservation Division
500 Insurance Building
212 North Market
Wichita, Kansas 67202**

**RECEIVED
STATE CORPORATION COMMISSION
7-9-69
JUL 9 1969
CONSERVATION DIVISION
Wichita, Kansas**

(IF PREFERRED, MAIL IN ENVELOPE)