

TYPE

NOTICE OF INTENTION TO DRILL

C-1
MI-1331

TO BE FILED WITH THE STATE CORPORATION COMMISSION
PRIOR TO COMMENCEMENT OF WELL

API Number 15-065-21,170-00-00
(For office use only)

1. Operator A. Scott Ritchie *L.H.A.*
Suite 950 - 125 N. Market
Address Wichita, Kansas 67202
2. Contractor Murfin Drilling Company
617 Union Center
Address Wichita, Kansas 67202
3. Type of Equipment: Rotary Cable Tool _____
4. Well to be Drilled for: Oil Gas _____
Disposal _____ Input _____ Other _____
5. Depth of Deepest Fresh Water within 1 mile 90 ft.
6. Depth of Municipal Water Well within 3 miles none ft.
7. Depth to Protect all Fresh Water 550 ~~115~~ ft.
8. Amount of Surface Casing to be set 150 ft.
9. Alternate No. 1 _____ No. 2

Starting Date September 28, 1979
County Graham
Sec 16 Twp 10 S Rge 22 ^K _W
Spot Location App. SW SW SE
Nearest Lease Line 440 ft.
Lease Name Webster
Well No. 1
Est. Total Depth 3860 ft.

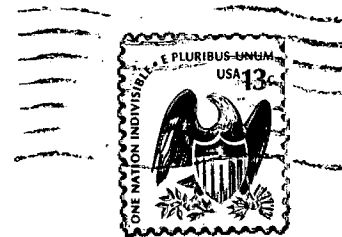
REMARKS:

OPERATOR STATES THAT HE WILL COMPLY WITH K. S. A. 55-128

Signature of Operator

F. Judson Hipps *OK/AB*
F. Judson Hipps for A. Scott Ritchie

A. SCOTT RITCHIE
SUITE 950
125 N. MARKET
WICHITA, KANSAS 67202



State Corporation Commission of Kansas
Conservation Division
245 North Water
Wichita, Kansas 67202

RECEIVED
STATE CORPORATION COMMISSION
SEP 19 1979
09-19-1979
CONSERVATION DIVISION
Wichita, Kansas

(IF PREFERRED, MAIL IN ENVELOPE)