

CONFIDENTIAL

WELL COMPLETION FORM
WELL HISTORY - DESCRIPTION OF WELL & LEASE

RECEIVED

Operator: License # 5278

Name: EOG Resources, Inc.

Address 3817 NW Expressway, Suite 500

City/State/Zip Oklahoma City, Oklahoma 73112

Purchaser: N/A

Operator Contact Person: MINDY BLACK

Phone (405) 246-3130

Contractor: Name: ABERCROMBIE RTD, INC.

License: 30684

Wellsite Geologist: _____

Designate Type of Completion

New Well Re-Entry Workover

Oil SWD SIOW Temp. Abd.

Gas ENHR SIGW

Dry Other (Core, WSW, Expl., Cathodic, etc.)

If Workover/Reentry: Old Well Info as follows:

Operator: _____

Well Name: _____

Original Comp. Date _____ Original Total Depth _____

Deepening Re-perf. Conv. to Enhr./SWD

Plug Back Plug Back Total Depth _____

Commingled Docket No. _____

Dual Completion Docket No. _____

Other (SWD or Enhr?) Docket No. _____

7/30/06 8/11/06 8/11/06
Spud Date or Date Reached TD Completion Date or
Recompletion Date Recompletion Date

API NO. 15- 189-22545-01-00 SEP 08 2006

County STEVENS

NW SE NE SW Sec. 8 Twp. 31 S. R. 37 E W

1765' Feet from S/N (circle one) Line of Section

540 Feet from E/W (circle one) Line of Section

Footages Calculated from Nearest Outside Section Corner:

(circle one) NE SE NW SW

Lease Name RIVERBEND Well # 8 #1

Field Name _____

Producing Formation N/A - DRY

Elevation: Ground 3109' Kelley Bushing 3121'

Total Depth 5700' Plug Back Total Depth ---

Amount of Surface Pipe Set and Cemented at 1686' Feet

Multiple Stage Cementing Collar Used? Yes No

If yes, show depth set _____ Feet

If Alternate II completion, cement circulated from _____

feet depth to _____ w/ _____ sx cmt.

Drilling Fluid Management Plan PA NH 7-29-08
(Data must be collected from the Reserve Pit)

Chloride content 4000 ppm Fluid volume 1000 bbls

Dewatering method used EVAPORATION

Location of fluid disposal if hauled offsite: _____

Operator Name _____

Lease Name _____ License No. _____

Quarter _____ Sec. _____ Twp. _____ S. R. _____ E W

County _____ Docket No. _____

INSTRUCTIONS: An original and two copies of this form shall be filed with the Kansas Corporation Commission, 130 S. Market - Room 2078, Wichita, Kansas 67202, within 120 days of the spud date, recompletion, workover or conversion of a well. Rule 82-3-130, 82-3-106 and 82-3-107 apply. Information on side two of this form will be held confidential for a period of 12 months if requested in writing and submitted with the form (see rule 82-3-107 for confidentiality in excess of 12 months). One copy of all wireline logs and geologist well report shall be attached with this form. ALL CEMENTING TICKETS MUST BE ATTACHED. Submit CP-4 form with all plugged wells. Submit CP-111 form with all temporarily abandoned wells.

All requirements of the statutes, rules and regulations promulgated to regulate the oil and gas industry have been fully complied with and the statements herein are complete and correct to the best of my knowledge.

Signature Mindy Black

Title REGULATORY OPERATIONS ASSISTANT Date 9-1-06

Subscribed and sworn to before me this 1st day of SEPTEMBER

2006 Notary Public

Notary Public Karye Dawn Rockwell State of Oklahoma

Commission # 0-003576 Expires 10/21/08

Date Commission Expires _____

KCC Office Use ONLY

Letter of Confidentiality Attached

If Denied, Yes Date: _____

Wireline Log Received

Geologist Report Received

UIC Distribution

Operator Name EOG RESOURCES, INC.

Lease Name RIVERBEND

Well # 8 #1

Sec. 8 Twp. 31 S.R. 37 East West

County STEVENS

INSTRUCTIONS: Show important tops and base of formations penetrated. Detail all cores. Report all drill stem tests giving interval tested, time tool open and closed, flowing and shut-in pressures, whether shut-in pressure reached static level, hydrostatic pressures, bottom hole temperature, fluid recovery, and flow rates if gas to surface during test. Attach extra sheet if more space is needed. Attach copy of all Electric Wireline Logs surveyed. Attach final geological well site report.

Drill Stem Tests Taken (Attach Additional Sheets.) Yes No

Samples Sent to Geological Survey Yes No

Cores Taken Yes No

Electric Log Run (Submit Copy.) Yes No

List All E.Logs Run:

ARRAY COMPENSATED RESISTIVITY TOOL, MICROLOG, SPECTRAL DENSITY DUAL SPACED NEUTRON LOG, SPECTRAL DENSITY DUAL SPACED NEUTRON MICROLOG, WAVESONIC, MUDLOG

Log Formation (Top), Depth and Datums Sample
Name Top Datum

SEE ATTACHED SHEET

KCC
AUG 23 2006
CONFIDENTIAL

CASING RECORD New Used

Report all strings set-conductor, surface, intermediate, production, etc.

Purpose of String	Size Hole Drilled	Size Casing Set (In O.D.)	Weight Lbs./Ft.	Setting Depth	Type of Cement	# Sacks Used	Type and Percent Additives
SURFACE	12 1/4	8 5/8	24#	1686'	MIDCON 2 PP	300	SEE CMT TIX
					PREM PLUS	180	2%CC, .125POLY

ADDITIONAL CEMENTING/SQUEEZE RECORD

Purpose	Depth		Type of Cement	#Sacks Used	Type and Percent Additives
	Top	Bottom			
Perforate					
Protect Casing					
Plug Back TD					
Plug Off Zone					

Shots Per Foot	PERFORATION RECORD - Bridge Plugs Set/Type Specify Footage of Each Interval Perforated	Acid, Fracture, Shot, Cement Squeeze Record (Amount and Kind of Material Used)	Depth

RECEIVED
SEP 08 2006
KCC WICHITA

TUBING RECORD Size Set At Packer At Liner Run Yes No

Date of First, Resumed Production, SWD or Enhr. Producing Method Flowing Pumping Gas Lift Other (Explain)

Estimated Production Per 24 Hours	Oil Bbls.	Gas Mcf	Water Bbls.	Gas-Oil Ratio	Gravity

Disposition of Gas: METHOD OF COMPLETION Production Interval
 Vented Sold Used on Lease Open Hole Perforation Dually Comp. Commingled
 (If vented, submit ACO-18.) Other (Specify) WELL WAS P&A.

KCC

AUG 23 2006

CONFIDENTIAL

ACO-1		
Well Name : RIVERBEND 8 #1		
FORMATION	TOP	DATUM
BASE OF HEEBNER	4048	927
LANSING	4160	1039
CHEROKEE	4957	1836
ATOKA	5238	2117
MORROW	5395	2274
CHESTER	5690	2569

RECEIVED
SEP 08 2006
KCC WICHITA

HALLIBURTON

Cementing Job Summary

The Road to Excellence Starts with Safety

Sold To #: 302122	Ship To #: 2510697	Quote #:	Sales Order #: 4537527
Customer: EOG RESOURCES INC		Customer Rep: Brock, Gary	
Well Name: RIVERBEND	Well #: 8#1	API/UWI #:	
Field:	City (SAP): UNKNOWN	County/Parish: Stevens	State: Kansas
Contractor: ABERCROMBIE	Rig/Platform Name/Num: 8 1		
Job Purpose: Cement Surface Casing			
Well Type: Development Well		Job Type: Cementing	
Sales Person: BLAKEY, JOSEPH		Srvc Supervisor: CLEMENS, ANTHONY	MBU ID Emp #: 198516

KCC
AUG 23 2006
CONFIDENTIAL

Job Personnel

HES Emp Name	Exp Hrs	Emp #	HES Emp Name	Exp Hrs	Emp #	HES Emp Name	Exp Hrs	Emp #
ARCHULETA, MIGUEL A	5.0	226381	CLEMENS, ANTHONY Jason	5.0	198516	OLIPHANT, CHESTER C	5.0	243055

Equipment

HES Unit #	Distance-1 way	HES Unit #	Distance-1 way	HES Unit #	Distance-1 way	HES Unit #	Distance-1 way
10240236	50 mile	10240245	50 mile	10251403C	50 mile	10547690	50 mile
52026	50 mile	77031	50 mile				

Job Hours

Date	On Location Hours	Operating Hours	Date	On Location Hours	Operating Hours	Date	On Location Hours	Operating Hours
TOTAL			Total is the sum of each column separately					

Job

Job Times

Formation Name	Formation Depth (MD) Top	Bottom	Called Out	Date	Time	Time Zone
Form Type	BHST		On Location			
Job depth MD	1700. ft	Job Depth TVD	Job Started	31 - Jul - 2006	16:05	CST
Water Depth		Wk Ht Above Floor	Job Completed	31 - Jul - 2006	17:19	CST
Perforation Depth (MD) From		To	Departed Loc			

Well Data

Description	New / Used	Max pressure psig	Size in	ID in	Weight lbm/ft	Thread	Grade	Top MD ft	Bottom MD ft	Top TVD ft	Bottom TVD ft
12 1/4 OPEN HOLE				12.25					1700.		
8 5/8 SURFACE	New		8.625	8.097	24.				1750.		

Sales/Rental/3rd Party (HES)

Description	Qty	Qty uom	Depth	Supplier
SHOE, CSG, 8 5/8 8RD	1	EA		
CLR, FLT, TROPHY SEAL, 8-5/8 8RD	1	EA		
AUTOFILL KIT, TROPHY SEAL	1	EA		
CENTRALIZER ASSY - 8-5/8 CSG X 12-1/4	10	EA		
CLP, LIM, 8 5/8, FRICT, WTH DOGS	2	EA		
BASKET - CEMENT - 8 5/8 CSG X 12 1/4	1	EA		
PLUG, CMTG, TOP, 8 5/8, HW, 7.20 MIN/8.09 MA	1	EA		

RECEIVED
SEP 08 2006

KCC WICHITA

Tools and Accessories

Type	Size	Qty	Make	Depth	Type	Size	Qty	Make	Depth	Type	Size	Qty	Make
Guide Shoe					Packer					Top Plug			
Float Shoe					Bridge Plug					Bottom Plug			
Float Collar					Retainer					SSR plug set			
Insert Float										Plug Container			
Stage Tool										Centralizers			

HALLIBURTON

KCC

AUG 23 2006

Cementing Job Summary

CONFIDENTIAL

Miscellaneous Materials													
Gelling Agt		Conc		Surfactant		Conc		Acid Type		Qty		Conc	%
Treatment Fld		Conc		Inhibitor		Conc		Sand Type		Size		Qty	
Fluid Data													
Stage/Plug #: 1													
Fluid #	Stage Type	Fluid Name			Qty	Qty uom	Mixing Density lbm/gal	Yield ft ³ /sk	Mix Fluid Gal/sk	Rate bbl/min	Total Mix Fluid Gal/sk		
1	Lead Cement	MIDCON-2 CEMENT PREMIUM PLUS - SBM (15079)			300.0	sacks	11.4	2.96	18.16		18.16		
	3 %	CALCIUM CHLORIDE - HI TEST PELLET (100005053)											
	0.125 lbm	POLY-E-FLAKE (101216940)											
	0.1 %	WG-17, 50 LB SK (100003623)											
	18.163 Gal	FRESH WATER											
2	Tail Cement	CMT - PREMIUM PLUS CEMENT (100012205)			180.0	sacks	14.8	1.35	6.35		6.35		
	0.125 lbm	POLY-E-FLAKE (101216940)											
	6.345 Gal	FRESH WATER											
	2 %	CALCIUM CHLORIDE - HI TEST PELLET (100005053)											
3	Displacement				106.00	bbl	8.33	.0	.0	.0			
Calculated Values			Pressures			Volumes							
Displacement		Shut In: Instant		Lost Returns		Cement Slurry		Pad					
Top Of Cement		5 Min		Cement Returns		Actual Displacement		Treatment					
Frac Gradient		15 Min		Spacers		Load and Breakdown		Total Job					
Rates													
Circulating		Mixing		Displacement		Avg. Job							
Cement Left In Pipe	Amount	45 ft	Reason	Shoe Joint									
Frac Ring # 1 @	ID	Frac ring # 2 @	ID	Frac Ring # 3 @	ID	Frac Ring # 4 @	ID						
The Information Stated Herein Is Correct				Customer Representative Signature <i>John Bull</i>									

RECEIVED

SEP 08 2006

KCC WICHITA

HALLIBURTON**KCC**
AUG 23 2006
CONFIDENTIAL**Cementing Job Log***The Road to Excellence Starts with Safety*

Sold To #: 302122	Ship To #: 2510697	Quote #:	Sales Order #: 4537527
Customer: EOG RESOURCES INC		Customer Rep: Brock, Gary	
Well Name: RIVERBEND	Well #: 8#1	API/UWI #:	
Field:	City (SAP): UNKNOWN	County/Parish: Stevens	State: Kansas
Legal Description:			
Lat:		Long:	
Contractor: ABERCROMBIE		Rig/Platform Name/Num: 8 1	
Job Purpose: Cement Surface Casing			Ticket Amount: \$ 20,906.28
Well Type: Development Well		Job Type: Cementing	
Sales Person: BLAKEY, JOSEPH		Srvc Supervisor: CLEMENS, ANTHONY MBU ID Emp #: 198516	

Activity Description	Date/Time	Cht #	Rate bbl/min	Volume bbl		Pressure psig		Comments
				Stage	Total	Tubing	Casing	
Call Out	07/31/2006 09:00							
Arrive At Loc	07/31/2006 12:00							
Pre-Job Safety Meeting	07/31/2006 12:15							
Rig-Up Completed	07/31/2006 12:45							
Start In Hole	07/31/2006 13:30							
Casing on Bottom	07/31/2006 15:35							RECEIVED
Circulate Well	07/31/2006 15:40							SEP 08 2006
Pressure Test	07/31/2006 16:05						1500.0	KCC WICHITA
Pump Lead Cement	07/31/2006 16:09		7		158		125.0	300 sks midcon II mixed @ 11.4#
Pump Tail Cement	07/31/2006 16:36		5.5		43		100.0	180 sks prem plus mixed @ 14.8#
Drop Top Plug	07/31/2006 16:46							
Pump Displacement	07/31/2006 16:47		6		104		25.0	fresh
Displ Reached Cmnt	07/31/2006 16:57		6		30		125.0	
Other	07/31/2006 17:10		2		94		450.0	slow rate to 2bbl/min
Bump Plug	07/31/2006 17:17		2		104		1200.0	final lift pressure 475 psi
End Job	07/31/2006 17:17							circulated cement

Sold To #: 302122

Ship To #: 2510697

Quote #:

Sales Order #: 4537527

SUMMIT Version: 7.10.386

Monday, July 31, 2006 05:38:00

HALLIBURTON

KCC
AUG 23 2006
CONFIDENTIAL

Cementing Job Summary

The Road to Excellence Starts with Safety

Sold To #: 302122	Ship To #: 2510697	Quote #:	Sales Order #: 4560569
Customer: EOG RESOURCES INC		Customer Rep: Passig, Dale	
Well Name: RIVERBEND		Well #: 8#1	API/UWI #:
Field:	City (SAP): UNKNOWN	County/Parish: Stevens	State: Kansas
Contractor: ABERCROMBIE		Rig/Platform Name/Num: 18	
Job Purpose: Plug to Abandon Service			
Well Type: Development Well		Job Type: Cementing	
Sales Person: BLAKEY, JOSEPH		Srvc Supervisor: CLEMENS, ANTHONY	MBU ID Emp #: 198516

Job Personnel

HES Emp Name	Exp Hrs	Emp #	HES Emp Name	Exp Hrs	Emp #	HES Emp Name	Exp Hrs	Emp #
CLEMENS, ANTHONY Jason	7.0	198516	LOPEZ, CARLOS	7.0	321975	OLDS, ROYCE E	7.0	306196

Equipment

HES Unit #	Distance-1 way	HES Unit #	Distance-1 way	HES Unit #	Distance-1 way	HES Unit #	Distance-1 way
10251403C	50 mile	10547690	50 mile	54225	50 mile	6611U	50 mile

Job Hours

Date	On Location Hours	Operating Hours	Date	On Location Hours	Operating Hours	Date	On Location Hours	Operating Hours
TOTAL								

Total is the sum of each column separately

Job

Formation Name	Formation Depth (MD) Top	Bottom	Job Times
			Date
Form Type	BHST		Time
Job depth MD	3000. ft	Job Depth TVD	Time Zone
Water Depth		Wk Ht Above Floor	
Perforation Depth (MD) From		To	
			Called Out
			On Location
			Job Started
			Job Completed
			Departed Loc

Well Data

Description	New / Used	Max pressure psig	Size in	ID in	Weight lbm/ft	Thread	Grade	Top MD ft	Bottom MD ft	Top TVD ft	Bottom TVD ft
Surface Casing	New		8.625	8.097	24.				1700.		
Production Hole				7.875				1700.	6200.		
4 1/2 DRILL PIPE	Used		4.5	3.826	16.6				3000.		
Cement Plug	Used							2550.	3000.		
Cement Plug	Used							1500.	1710.		
Cement Plug	Used							350.	660.		
Cement Plug	Used								60.		
Cement Plug	Used								30.		
Cement Plug	Used								30.		

Tools and Accessories

Type	Size	Qty	Make	Depth	Type	Size	Qty	Make	Depth	Type	Size	Qty	Make
Guide Shoe					Packer					Top Plug			
Float Shoe					Bridge Plug					Bottom Plug			
Float Collar					Retainer					SSR plug set			
Insert Float										Plug Container			
Stage Tool										Centralizers			

RECEIVED
SEP 08 2006
KCC WICHITA

Miscellaneous Materials

Gelling Agt	Conc	Surfactant	Conc	Acid Type	Qty	Conc	%
Treatment Fld	Conc	Inhibitor	Conc	Sand Type	Size	Conc	%

HALLIBURTON

KCC
AUG 23 2006
CONFIDENTIAL

Cementing Job Summary

Fluid Data

Stage/Plug #: 1

Fluid #	Stage Type	Fluid Name	Qty	Qty uom	Mixing Density lbm/gal	Yield ft3/sk	Mix Fluid Gal/sk	Rate bbl/min	Total Mix Fluid Gal/sk
1	Plug 3000 2999 4 %	POZ PREMIUM 40/60 - SBM (15075) BENTONITE, BULK (100003682)	100.0	sacks	13.5	1.54	7.67		7.67
		7.668 Gal	FRESH WATER						

Stage/Plug #: 2

Fluid #	Stage Type	Fluid Name	Qty	Qty uom	Mixing Density uom	Yield uom	Mix Fluid uom	Rate uom	Total Mix Fluid uom
1	PLUG @ 1700 4 %	POZ PREMIUM 40/60 - SBM (15075) BENTONITE, BULK (100003682)	50.0	sacks	13.5	1.53	7.61		7.61
		7.609 Gal	FRESH WATER						

Stage/Plug #: 3

Fluid #	Stage Type	Fluid Name	Qty	Qty uom	Mixing Density uom	Yield uom	Mix Fluid uom	Rate uom	Total Mix Fluid uom
1	PLUG @ 000 4 % 650	POZ PREMIUM 40/60 - SBM (15075) BENTONITE, BULK (100003682)	50.0	sacks	13.5	1.53	7.61		7.61
		7.609 Gal	FRESH WATER						

Stage/Plug #: 4

Fluid #	Stage Type	Fluid Name	Qty	Qty uom	Mixing Density uom	Yield uom	Mix Fluid uom	Rate uom	Total Mix Fluid uom
1	PLUG @ 600 4 %	POZ PREMIUM 40/60 - SBM (15075) BENTONITE, BULK (100003682)	20.0	sacks	13.5	1.53	7.61		7.61
		7.609 Gal	FRESH WATER						

Stage/Plug #: 5

Fluid #	Stage Type	Fluid Name	Qty	Qty uom	Mixing Density uom	Yield uom	Mix Fluid uom	Rate uom	Total Mix Fluid uom
1	PLUG MOUSE HOLE 4 %	POZ PREMIUM 40/60 - SBM (15075) BENTONITE, BULK (100003682)	10.0	sacks	13.5	1.53	7.61		7.61
		7.609 Gal	FRESH WATER						

Stage/Plug #: 6

Fluid #	Stage Type	Fluid Name	Qty	Qty uom	Mixing Density uom	Yield uom	Mix Fluid uom	Rate uom	Total Mix Fluid uom
1	PLUG RAT HOLE 4 %	POZ PREMIUM 40/60 - SBM (15075) BENTONITE, BULK (100003682)	15.0	sacks	13.5	1.53	7.61		7.61
		7.609 Gal	FRESH WATER						

Calculated Values

Calculated Values		Pressures		Volumes			
Displacement		Shut In: Instant		Lost Returns	Cement Slurry		Pad
Top Of Cement		5 Min		Cement Returns	Actual Displacement		Treatment
Frac Gradient		15 Min		Spacers	Load and Breakdown		Total Job

RECEIVED

SEP 08 2006

KCC WICHITA

KCC

AUG 23 2006

HALLIBURTON

CONFIDENTIAL

Cementing Job Summary

Rates									
Circulating	Mixing			Displacement			Avg. Job		
Cement Left In Pipe	Amount	44.57 ft	Reason	Shoe Joint					
Frac Ring # 1 @	ID	Frac ring # 2 @	ID	Frac Ring # 3 @	ID	Frac Ring # 4 @	ID		
The Information Stated Herein Is Correct				Customer Representative Signature <i>Dele Passy</i>					

RECEIVED
 SEP 08 2006
 KCC WICHITA

HALLIBURTON

KCC
AUG 23 2006
CONFIDENTIAL

Cementing Job Log

The Road to Excellence Starts with Safety

Sold To #: 302122	Ship To #: 2510697	Quote #:	Sales Order #: 4560569
Customer: EOG RESOURCES INC		Customer Rep: Passig, Dale	
Well Name: RIVERBEND		Well #: 8#1	API/UWI #:
Field:	City (SAP): UNKNOWN	County/Parish: Stevens	State: Kansas
Legal Description:			
Lat:		Long:	
Contractor: ABERCROMBIE		Rig/Platform Name/Num: 18	
Job Purpose: Plug to Abandon Service			Ticket Amount: \$ 18,031.13
Well Type: Development Well		Job Type: Cementing	
Sales Person: BLAKEY, JOSEPH		Srvc Supervisor: CLEMENS, ANTHONY	MBU ID Emp #: 198516

Activity Description	Date/Time	Cht #	Rate bbl/min	Volume bbl		Pressure psig		Comments
				Stage	Total	Tubing	Casing	
Call Out	08/10/2006 11:30							RECEIVED SEP 08 2006 KCC WICHITA
Arrive At Loc	08/10/2006 15:00							
Pre-Job Safety Meeting	08/10/2006 15:15							
Rig-Up Completed	08/10/2006 15:45							
Other	08/10/2006 17:38							set 1st plug @ 2999 ft
Test Lines	08/10/2006 17:38					1500.0		
Pump Cement	08/10/2006 17:41		5		27	200.0		100 sks 40/60 poz mixed @ 13.5#
Pump Displacement	08/10/2006 17:47		5		34	150.0		w/ mud
Other	08/10/2006 19:35							set 2nd plug @ 1750 ft
Pump Spacer 1	08/10/2006 19:35		5			350.0		load hole w/ h2o
Pump Cement	08/10/2006 19:57		5		13	150.0		50 sks 40/60 poz mixed @ 13.5#
Pump Displacement	08/10/2006 20:00		5		20	50.0		w/ h2o
Other	08/10/2006 20:50							set 3rd plug @ 650 ft
Pump Spacer 1	08/10/2006 20:50		5		11	75.0		load hole w/ h2o
Pump Cement	08/10/2006 20:53		5		13	100.0		50 sks 40/60 poz mixed @ 13.5#
Pump Displacement	08/10/2006 20:55		5		6	50.0		
Pump Cement	08/10/2006 21:25		4		12	25.0		plug surface 62 ft and rat and mouse

Sold To #: 302122

Ship To #: 2510697

Quote #:

Sales Order #:

4560569

SUMMIT Version: 7.10.386

Thursday, August 10, 2006 10:14:00

HALLIBURTON

KCC
AUG 23 2006
CONFIDENTIAL

Cementing Job Log

Activity Description	Date/Time	Cht #	Rate bbl/min	Volume bbl		Pressure psig		Comments
				Stage	Total	Tubing	Casing	
End Job	08/10/2006 21:55							

RECEIVED
SEP 08 2006
KCC WICHITA

Sold To #: 302122

Ship To #: 2510697

Quote #:

Sales Order #:

4560569

SUMMIT Version: 7.10.386

Thursday, August 10, 2006 10:14:00

HALLIBURTON

ARRAY COMPENSATED
RESISTIVITY

TOOL
KCC
AUG 23 2006

CONFIDENTIAL

COMPANY EOG RESOURCES, INC WELL RIVERBEND 8 #1 FIELD WILDCAT COUNTY STEVENS STATE KANSAS		COMPANY EOG RESOURCES, INC WELL RIVERBEND 8 #1 FIELD WILDCAT COUNTY STEVENS STATE KANSAS	
API No. 15-189-22545 Location 1765' FSL & 540' FEL		Other Services: SDL-IQ DSN-IQ MICROLOG WAVE SONIC	
Sect. 8 Twp. 31S Rge. 37W		Permanent Datum Log measured from Drilling measured from	
GROUND LEVEL KELLY BUSHING KELLY BUSHING		Elev. 3109.0 ft 12.0 ft above perm. Datum Elev. K.B. 3121.0 ft D.F. 3120.0 ft G.L. 3109.0 ft	
Date	09-Aug-06 10:05:42		
Run No.	1		
Depth - Driller	5700.0 ft		
Depth - Logger	5698.0 ft		
Bottom - Logged Interval	5688.0 ft		
Top - Logged Interval	1686.0 ft		
Casing - Driller	8.625 in @ 1686.0 ft @		
Casing - Logger	1686.0 ft		
Bit Size	7.875 in @		
Type Fluid in Hole	CHEM		
Density	Viscosity	9.3 ppg 45.00 s/qt	
PH	Fluid Loss	10.50 pH 8 cpm	
Source of Sample	CIRC. TANK		
Rm @ Meas. Temperature	1.00 ohmm @ 74.00 degF @		
Rmf @ Meas. Temperature	0.85 ohmm @ 74.00 degF @		
Rmc @ Meas. Temperature	1.15 ohmm @ 74.00 degF @		
Source Rmf	Rmc	CALC. CALC.	
Rm @ BHT	0.64 ohmm @ 117.0 degF @		
Time Since Circulation	4.0 hr		
Time on Bottom	09-Aug-06 11:00:00		
Max. Rec. Temperature	117.0 degF @ 5698.0 ft @		
Equipment	Location	10782954 LIBERAL	
Recorded By	E.SHIBALOV		
Witnessed By	D.PASSIG		

Service Ticket No.: 4547564 API Serial No.: 15-189-22545 PGM Version: WL INSITE R1.7 (Build 16)

CHANGE IN MUD TYPE OR ADDITIONAL SAMPLE				RESISTIVITY SCALE CHANGES				EQUIPMENT DATA								
Date	Sample No.	Type Log	Depth	Scale Up Hole	Scale Down Hole	Run No.	Tool Type & No.	Pad Type	Run No.	Serial No.	Model No.	Diameter	Log Type	Source Type	Serial No.	Strength
						ONE	ACRT 784	N/A								

NEUTRON DENSITY ACROUSTIC GAMMA GENERAL

HALLIBURTON

MICROLOG

COMPANY **EOG RESOURCES, INC**
 WELL **RIVERBEND 8 #1**
 FIELD **WILDCAT**
 COUNTY **STEVENS**
 STATE **KANSAS**

COMPANY **EOG RESOURCES, INC**
 WELL **RIVERBEND 8 #1**
 FIELD **WILDCAT**
 COUNTY **STEVENS** STATE **KANSAS**

API No. 15-189-22545
 Location 1765' FSL & 540' FEL
 Sect. 8 Twp. 31S Rge. 37W

Other Services:
 SDL-IQ
 DSN-IQ
 ACRT
 WAVE SONIC

KCC
AUG 23 2006
CONFIDENTIAL

Permanent Datum	GROUND LEVEL	Elev. 3109.0 ft	Elev.: K.B.	3121.0 ft
Log measured from	KELLY BUSHING	12.0 ft above perm. Datum	D.F.	3120.0 ft
Drilling measured from	KELLY BUSHING		G.L.	3109.0 ft
Date	09-Aug-06 10:05:42			
Run No.	1			
Depth - Driller	5700.0 ft			
Depth - Logger	5698.0 ft			
Bottom - Logged Interval	5635.0 ft			
Top - Logged Interval	4000.0 ft			
Casing - Driller	8.625 in @ 1686.0 ft	@	@	
Casing - Logger	1686.0 ft			
Bit Size	7.875 in @	@	@	
Type Fluid in Hole	CHEM			
Density	Viscosity	9.3 ppg	45.00 s/qt	
PH	Fluid Loss	10.50 pH	8 cpm	
Source of Sample	CIRC. TANK			
Rm @ Meas. Temperature	1.00 ohmm @ 74.00 degF	@	@	
Rmf @ Meas. Temperature	0.85 ohmm @ 74.00 degF	@	@	
Rmc @ Meas. Temperature	1.15 ohmm @ 74.00 degF	@	@	
Source Rmf	Rmc	CALC.	CALC.	
Rm @ BHT	0.64 ohmm @ 117.0 degF	@	@	
Time Since Circulation	4.0 hr			
Time on Bottom	09-Aug-06 11:00:00			
Max. Rec. Temperature	117.0 degF @ 5698.0 ft	@	@	
Equipment	Location	10782954	LIBERAL	
Recorded By	E.SHIBALOV			
Witnessed By	D.PASSIG			

RECEIVED
 SEP 08 2006
 KCC WICHITA

Fold here

Service Ticket No.: 4547564 API Serial No.: 15-189-22545 PGM Version: WL INSITE R1.7 (Build 16)

CHANGE IN MUD TYPE OR ADDITIONAL SAMPLE				RESISTIVITY SCALE CHANGES			
Date	Sample No.	Type Log	Depth	Scale Up Hole	Scale Down Hole		
RESISTIVITY EQUIPMENT DATA							
Run No.	Run No.	Run No.	Tool Type & No.	Pad Type	Tool Pos.	Other	
			MICRO MB5803	RUBBER	ADJ.		
EQUIPMENT DATA							
GAMMA				ACOUSTIC			
Run No.	ONE	Run No.		Run No.		Run No.	NEUTRON
Serial No.	10748374	Serial No.		Serial No.		Serial No.	
Model No.	GTET	Model No.		Model No.		Model No.	
Diameter	3.63"	No. of Cent.		Diameter		Diameter	
Detector Model No.	T-102	Spacing		Log Type		Log Type	
Type	SCINT	LSA [Y/N]		Source Type		Source Type	
Length	4"	FWDA [Y/N]		Serial No.		Serial No.	
Distance to Source	9.4'			Strength		Strength	

CEMEDI | GAMMA | ACOUSTIC | DENSITY | NEUTRON

HALLIBURTON

SPECTRAL DENSITY DUAL SPACED NEUTRON LOG

RECEIVED
SEP 08 2006

KCC WICHITA

COMPANY
WELL
FIELD
COUNTY
STATE

EOG RESOURCES, INC
RIVERBEND 8 #1
WILDCAT
STEVENS
KANSAS

COMPANY EOG RESOURCES, INC
WELL RIVERBEND 8 #1
FIELD WILDCAT
COUNTY STEVENS STATE KANSAS

API No. 15-189-22545
Location 1765' FSL & 540' FEL

Sect. 8 Twp. 31S Rge. 37W

KCC
AUG 23 2006
CONFIDENTIAL

Other Services:
ACRT
MICROLOG
WAVESONIC

Permanent Datum	GROUND LEVEL	Elev.: 3109.0 ft	Elev.: K.B. 3121.0 ft
Log measured from	KELLY BUSHING	12.0 ft above perm. Datum	D.F. 3120.0 ft
Drilling measured from	KELLY BUSHING		G.L. 3109.0 ft
Date	09-Aug-06 10:05:42		
Run No.	1		
Depth - Driller	5700.0 ft		
Depth - Logger	5698.0 ft		
Bottom - Logged Interval	5635.0 ft		
Top - Logged Interval	4000.0 ft		
Casing - Driller	8.625 in @ 1686.0 ft	@	@
Casing - Logger	1686.0 ft		
Bit Size	7.875 in	@	@
Type Fluid in Hole	CHEM		
Density	9.3 ppg	45.00 s/qt	
PH	10.50 pH	8 cpm	
Source of Sample	CIRC. TANK		
Rm @ Meas. Temperature	1.00 ohmm @ 74.00 degF	@	@
Rmf @ Meas. Temperature	0.85 ohmm @ 74.00 degF	@	@
Rmc @ Meas. Temperature	1.15 ohmm @ 74.00 degF	@	@
Source Rmf	CALC.	CALC.	
Rm @ BHT	0.64 ohmm @ 117.0 degF	@	@
Time Since Circulation	4.0 hr		
Time on Bottom	09-Aug-06 11:00:00		
Max. Rec. Temperature	117.0 degF @ 5698.0 ft	@	@
Equipment	Location	10782954	LIBERAL
Recorded By	E.SHIBALOV		
Witnessed By	D.PASSIG		

Service Ticket No.: 4547564
API Serial No.: 15-189-22545
CHANGE IN MUD TYPE OR ADDITIONAL SAMPLE

PGM Version: WL INSITE R1.7 (Build 16)

Date	Sample No.	RESISTIVITY SCALE CHANGES		Type Log	Depth	Scale Up Hole	Scale Down Hole
		Scale Up Hole	Scale Down Hole				
RESISTIVITY EQUIPMENT DATA							
Source of Sample		Run No.	Tool Type	Pad Type	Tool Pos.	Other	
		@					
		@					
		@					
		@					
		@					
		@					
		@					

EQUIPMENT DATA				ACQUISITIC				DENSITY				NEUTRON			
GAMMA		ACQUISITIC		DENSITY		NEUTRON		DENSITY		ACQUISITIC		NEUTRON		DENSITY	
Run No.	Serial No.	Run No.	Serial No.	Run No.	Serial No.	Run No.	Serial No.	Run No.	Serial No.	Run No.	Serial No.	Run No.	Serial No.	Run No.	Serial No.
ONE	10748374			ONE	I55066_MB5803			ONE	I55066_MB5803			ONE	10755066		
	GTET				SDL-IQ				SDL-IQ				DSN-IQ		
	3.63"				4.75				4.75				3.63"		
	T-102				GAM/GAM				GAM/GAM				NEU/NEU		
	SCINT				CS137				CS137				AM241BE		
	4"				5073GW				5073GW				21471B		
	Distance to Source				1.5 CI				1.5 CI				19 CI		

Service Ticket No.: 4547564
API Serial No.: 15-189-22545
CHANGE IN MUD TYPE OR ADDITIONAL SAMPLE
PGM Version: WL INSITE R1.7 (Build 16)

HALLIBURTON

SPECTRAL DENSITY DUAL SPACED NEUTRON MICROLOG

RECEIVED
SEP 08 2006

KCCWICHITA

KCC
AUG 23 2006
CONFIDENTIAL

COMPANY EOG RESOURCES, INC		COMPANY EOG RESOURCES, INC	
WELL RIVERBEND 8 #1		WELL RIVERBEND 8 #1	
FIELD WILDCAT		FIELD WILDCAT	
COUNTY STEVENS		COUNTY STEVENS	
STATE KANSAS		STATE KANSAS	
API No. 15-189-22545		Other Services: ACRT WAVE SONIC	
Location 1765' FSL & 540' FEL			
Sect. 8	Twp. 31S	Rge. 37W	
Permanent Datum	GROUND LEVEL		Elev. 3109.0 ft
Log measured from	KELLY BUSHING		Elev.: K.B. 3121.0 ft
Drilling measured from	KELLY BUSHING		D.F. 3120.0 ft
	12.0 ft above perm. Datum		G.L. 3109.0 ft
Date	09-Aug-06 10:05:42		
Run No.	1		
Depth - Driller	5700.0 ft		
Depth - Logger	5698.0 ft		
Bottom - Logged Interval	5635.0 ft		
Top - Logged Interval	4000.0 ft		
Casing - Driller	8.625 in	@ 1686.0 ft	@
Casing - Logger	1686.0 ft		
Bit Size	7.875 in	@	@
Type Fluid in Hole	CHEM		
Density	Viscosity	9.3 ppg	45.00 s/qt
PH	Fluid Loss	10.50 pH	8 cpm
Source of Sample	CIRC. TANK		
Rm @ Meas. Temperature	1.00 ohmm	@ 74.00 degF	@
Rmf @ Meas. Temperature	0.85 ohmm	@ 74.00 degF	@
Rmc @ Meas. Temperature	1.15 ohmm	@ 74.00 degF	@
Source Rmf	Rmc	CALC.	CALC.
Rm @ BHT	0.64 ohmm	@ 117.0 degF	@
Time Since Circulation	4.0 hr		
Time on Bottom	09-Aug-06 11:00:00		
Max. Rec. Temperature	117.0 degF	@ 5698.0 ft	@
Equipment	Location	10782954	LIBERAL
Recorded By	E.SHIBALOV		
Witnessed By	D.PASSIG		

Fold here

Service Ticket No.: 4547564		API Serial No.: 15-189-22545		PGM Version: WLINSITE R1.7 (Build 16)	
CHANGE IN MUD TYPE OR ADDITIONAL SAMPLE					
Date	Sample No.	Type Log	Depth	Scale Up Hole	Scale Down Hole
Depth-Driller					
Type Fluid in Hole					
Density	Viscosity				
Ph	Fluid Loss				
Source of Sample					
Rm @ Meas. Temp	@				
Rmf @ Meas. Temp	@				
Rmc @ Meas. Temp	@				
Source Rmf	Rmc				
Rm @ BHT	@				
Rmf @ BHT	@				
Rmc @ BHT	@				
RESISTIVITY EQUIPMENT DATA					
Run No.	Tool Type & No.	Pad Type	Tool Pos.	Other	
ONE	MICRO M85803	RUBBER	ADJ.		
EQUIPMENT DATA					
GAMMA			DENSITY		
Run No.	Run No.	Run No.	Run No.	Run No.	Run No.
ONE	ONE	ONE	ONE	ONE	ONE
Serial No.	Serial No.	Serial No.	Serial No.	Serial No.	Serial No.
10748374	155066_M85803	155066_M85803	155066_M85803	10755066	10755066
Model No.	Model No.	Model No.	Model No.	Model No.	Model No.
GTET	SDL-1Q	SDL-1Q	SDL-1Q	DSN-1Q	DSN-1Q
Diameter	Diameter	Diameter	Diameter	Diameter	Diameter
3.63"	4.75	4.75	4.75	3.63"	3.63"
Detector Model No.	Log Type	Log Type	Log Type	Log Type	Log Type
T-102	GAM/GAM	GAM/GAM	GAM/GAM	NEU/NEU	NEU/NEU
Type	Source Type	Source Type	Source Type	Source Type	Source Type
SCINT	CS137	CS137	CS137	AM241BE	AM241BE
Length	Serial No.	Serial No.	Serial No.	Serial No.	Serial No.
4"	5073GW	5073GW	5073GW	21471B	21471B
Distance to Source	Strength	Strength	Strength	Strength	Strength
9.4'	1.5 CI	1.5 CI	1.5 CI	19 CI	19 CI
GAMMA			DENSITY		
ACCUSTIC			LOGGING DATA		
Run No.	Run No.	Run No.	Run No.	Run No.	Run No.
ONE	ONE	ONE	ONE	ONE	ONE
Serial No.	Serial No.	Serial No.	Serial No.	Serial No.	Serial No.
10748374	155066_M85803	155066_M85803	155066_M85803	10755066	10755066
Model No.	Model No.	Model No.	Model No.	Model No.	Model No.
GTET	SDL-1Q	SDL-1Q	SDL-1Q	DSN-1Q	DSN-1Q
Diameter	Diameter	Diameter	Diameter	Diameter	Diameter
3.63"	4.75	4.75	4.75	3.63"	3.63"
Detector Model No.	Log Type	Log Type	Log Type	Log Type	Log Type
T-102	GAM/GAM	GAM/GAM	GAM/GAM	NEU/NEU	NEU/NEU
Type	Source Type	Source Type	Source Type	Source Type	Source Type
SCINT	CS137	CS137	CS137	AM241BE	AM241BE
Length	Serial No.	Serial No.	Serial No.	Serial No.	Serial No.
4"	5073GW	5073GW	5073GW	21471B	21471B
Distance to Source	Strength	Strength	Strength	Strength	Strength
9.4'	1.5 CI	1.5 CI	1.5 CI	19 CI	19 CI

CEMEDI | GAMMA | ACQUSTIC | DENSITY | NEUTRON

HALLIBURTON

WAVE SONIC MONITOR LOG

RECEIVED
SEP 08 2006

COMPANY
WELL
FIELD
COUNTY
STATE

COMPANY **EOG RESOURCES, INC**
WELL **RIVERBEND 8 #1**
FIELD **WILDCAT**
COUNTY **STEVENS** STATE **KANSAS**

API No. 15-189-22545
Location 1765' FSL & 540' FELT
Sect. 8 Twp. 34S Rge. 37W

Other Services:
SDL-IQ
DSN-IQ
MICROLOG
ACRT
Elev.: K.B. 3121.0 ft
D.F. 3120.0 ft
G.L. 3109.0 ft

KCC
AUG 23 2006
CONFIDENTIAL

Permanent Datum	GROUND LEVEL		Elev. 3109.0 ft	Elev.: K.B. 3121.0 ft
Log measured from	KELLY BUSHING		12.0 ft above perm. Datum	D.F. 3120.0 ft
Drilling measured from	KELLY BUSHING			G.L. 3109.0 ft
Date	09-Aug-06 10:05:42			
Run No.	1			
Depth - Driller	5700.0 ft			
Depth - Logger	5698.0 ft			
Bottom - Logged Interval	5668.0 ft			
Top - Logged Interval	1686.0 ft			
Casing - Driller	8.625 in	@ 1686.0 ft		@
Casing - Logger	1686.0 ft			
Bit Size	7.875 in	@		@
Type Fluid in Hole	CHEM			
Density	Viscosity	9.3 ppg	45.00 s/qt	
PH	Fluid Loss	10.50 pH	8 cpm	
Source of Sample	CIRC. TANK			
Rm @ Meas. Temperature	1.00 ohmm	@ 74.00 degF	@	@
Rmf @ Meas. Temperature	0.85 ohmm	@ 74.00 degF	@	@
Rmc @ Meas. Temperature	1.15 ohmm	@ 74.00 degF	@	@
Source Rmf	Rmc	CALC.	CALC.	
Rm @ BHT	0.64 ohmm	@ 117.0 degF	@	@
Time Since Circulation	4.0 hr			
Time on Bottom	09-Aug-06 11:00:00			
Max. Rec. Temperature	117.0 degF	@ 5698.0 ft	@	@
Equipment	Location	10782954	LIBERAL	
Recorded By	E.SHIBALOV			
Witnessed By	D.PASSIG			

Fold here

KCC WICHITA

Service Ticket No.: 4547564 API Serial No.: 15-189-22545 PGM Version: WL IN SITE R1.7 (Build 16)

CHANGE IN MUD TYPE OR ADDITIONAL SAMPLE										RESISTIVITY SCALE CHANGES																			
Date	Sample No.	Type Fluid in Hole	Density	Viscosity	Fluid Loss	Source of Sample	Rm @ Meas. Temp.	Rmf @ Meas. Temp.	Rmc @ Meas. Temp.	Source Rmf	Rm @ BHT	Rmf @ BHT	Rmc @ BHT	Type Log	Depth	Scale Up Hole	Scale Down Hole	Run No.	Tool Type & No.	Pad Type	Tool Pos.	Other							
							@	@	@	@	@	@	@																
EQUIPMENT DATA										RESISTIVITY EQUIPMENT DATA																			
GAMMA										DENSITY										NEUTRON									
Run No.	ONE	Run No.	Serial No.	Model No.	Diameter	Detector Model No.	Type	Length	Distance to Source	Run No.	Serial No.	Model No.	Diameter	Log Type	Source Type	Serial No.	Strength	Run No.	Serial No.	Model No.	Diameter	Log Type	Source Type	Serial No.	Strength				
Serial No.	10748374	Serial No.			3.63"	T-102	SCINT	4"	9.4'	Run No.								Run No.											
Model No.	GTET	Model No.								Model No.								Serial No.											
Diameter	3.63"	No. of Cent.								Diameter								Model No.											
Detector Model No.	T-102	Spacing								Log Type								Diameter											
Type	SCINT	LSA [Y/N]								Source Type								Log Type											
Length	4"	FWDA [Y/N]								Serial No.								Source Type											
Distance to Source	9.4'									Strength								Serial No.											

CENEDAI | GAMMA | ACUSTIC | DENSITY | NEUTRON

American



Rt 1 - Box 172
Guymon, Ok 73942

(580) 338- 5120

KCC
AUG 23 2006
CONFIDENTIAL

Scale 1:240 (5"=100') Imperial

Well Name: **EOG RESOURCES, INC. RIVERBEND 8#1**
 Location: **SEC.8-31S-37W STEVENS CO. KANSAS**
 Licence Number: **Vers 5.3b** Region: **HJV**
 Spud Date: **7-30-06** Drilling Completed: **8-9-06**
 Surface Coordinates: **1765' FSL & 540' FEL**

Bottom Hole Coordinates:

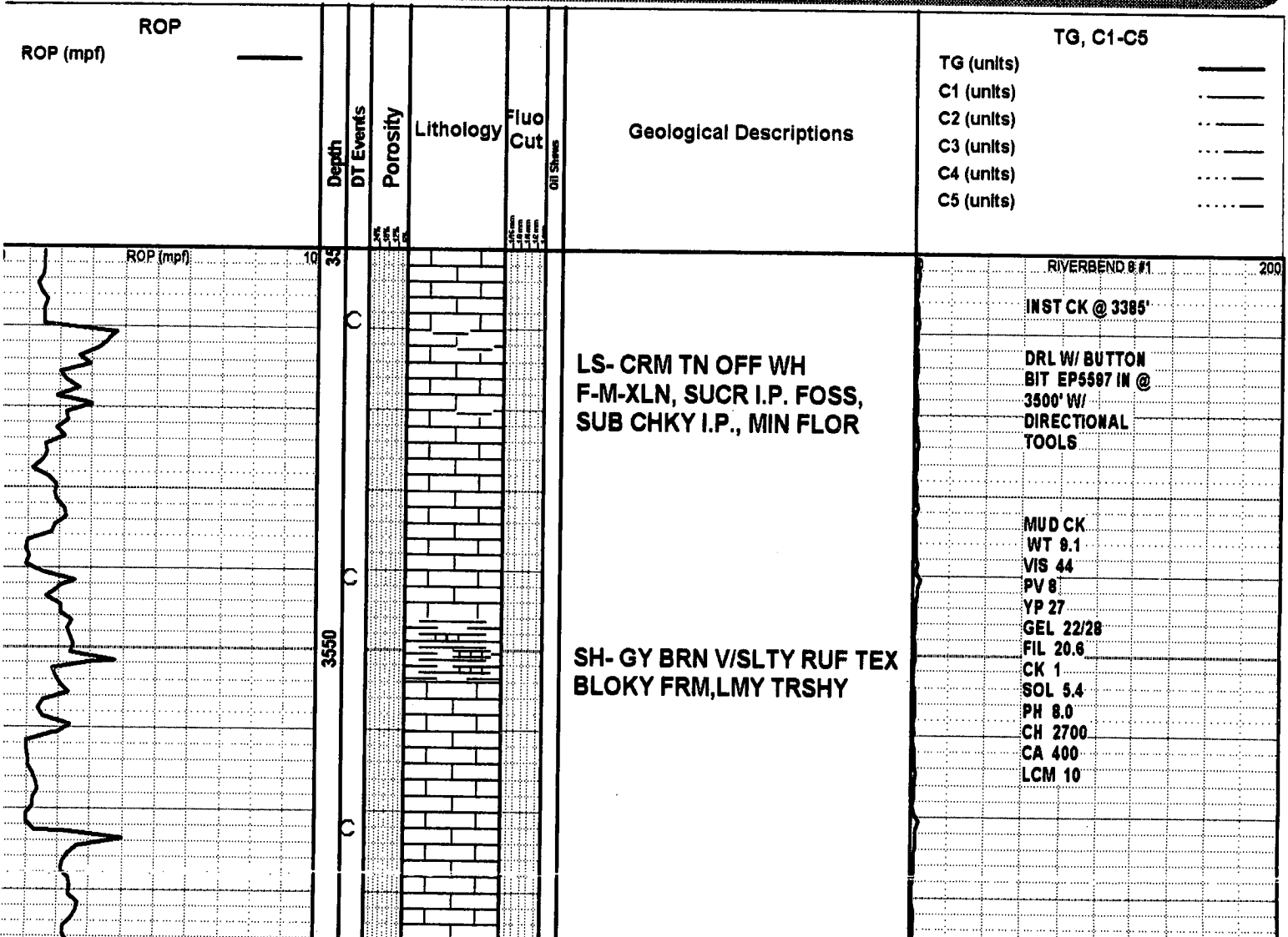
Geologist: **REX STOUT**
 Logger: **TOM HEFLIN**
 Ground Elevation (ft): **3109'** K.B. Elevation (ft): **3121'**
 Logged Interval (ft): **3500'** To: **T.D.** Total Depth (ft): **5701**
 Formation: **Job Type: One-Man unit start at 3500' on 8-2-06**
 Type of Drilling Fluid:

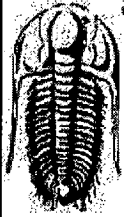
RECEIVED

SEP 08 2006

KCC WICHITA

Printed by WellSight Log Viewer from WellSight Systems 1-800-447-1534 www.WellSight.com





TRILOBITE TESTING, INC.

DRILL STEM TEST REPORT

EOG Resources
3817 NW Expressway
Suite 500
Oklahoma City, Ok
ATTN: EOG Resources

River Bend #8-1
8-31-37 Stevens, Ks
Job Ticket: 24693 DST#: 1
Test Start: 2006.08.08 @ 00:38:52

KCC
AUG 23 2006
CONFIDENTIAL

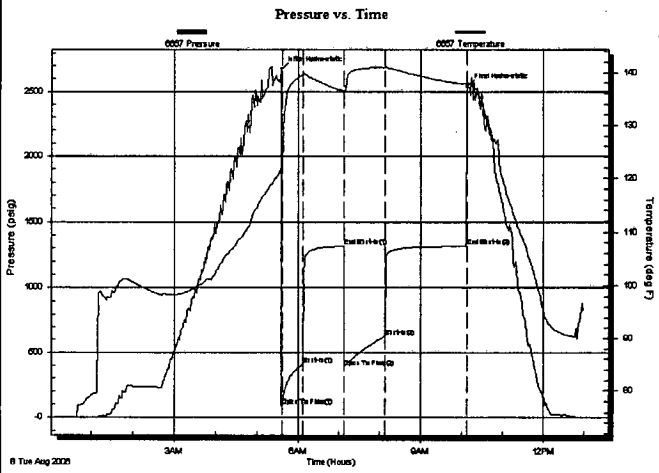
GENERAL INFORMATION:

Formation: **morrow**
Deviated: **Nb** Whipstock: **ft (KB)**
Time Tool Opened: 05:36:17
Time Test Ended: 13:25:17
Test Type: **Conventional Bottom Hole**
Tester: **Shane McBride**
Unit No: **8**
Interval: **5387.00 ft (KB) To 5445.00 ft (KB) (TVD)**
Total Depth: **5445.00 ft (KB) (TVD)**
Hole Diameter: **7.88 inches** Hole Condition: **Fair**
Reference Elevations: **3121.00 ft (KB)**
3109.00 ft (CF)
KB to GR/CF: **12.00 ft**

Serial #: 6667 **Inside**
Press@RunDepth: **626.19 psig @ 5388.00 ft (KB)**
Start Date: **2006.08.08** End Date: **2006.08.08**
Start Time: **00:38:52** End Time: **13:00:17**
Capacity: **7000.00 psig**
Last Calib.: **2006.08.08**
Time On Btm: **2006.08.08 @ 05:36:02**
Time Off Btm: **2006.08.08 @ 10:08:32**

TEST COMMENT: B.O.B. in 8 1/2 min. fair blow
Bled off for 1 min. , no return blow
B.O.B. in 16 min. fair blow
Bled off for 1 min. , no return blow

RECEIVED
SEP 08 2006



PRESSURE SUMMARY

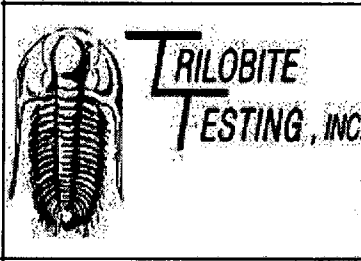
Time (Min.)	Pressure (psig)	Temp (deg F)	Annotation
0	2674.31	121.92	Initial Hydro-static
1	88.17	121.24	Open To Flow(1)
32	409.86	139.62	Shut-In(1)
91	1315.31	136.43	End Shut-In(1)
92	385.16	136.22	Open To Flow(2)
152	626.19	141.04	Shut-In(2)
271	1314.92	137.78	End Shut-In(2)
273	2536.51	138.08	Final Hydro-static

Recovery

Length (ft)	Description	Volume (bbl)
186.00	m c w 40m 60w	0.91
1023.00	salt water 100w	12.73

Gas Rates

	Choke (inches)	Pressure (psig)	Gas Rate (Mcf/d)



DRILL STEM TEST REPORT

FLUID SUMMARY

EOG Resources
 3817 NW Expressway
 Suite 500
 Oklahoma City, Ok
 ATTN: EOG Resources

River Bend #8-1
 8-31-37 Stevens, Ks
 Job Ticket: 24693 DST#: 1
 Test Start: 2006.08.08 @ 00:38:52

Mud and Cushion Information

Mud Type: Gel Chem	Cushion Type:	Oil API: 0 deg API
Mud Weight: 9.00 lb/gal	Cushion Length: ft	Water Salinity: 72500ppm
Viscosity: 48.00 sec/qt	Cushion Volume: bbl	
Water Loss: 8.36 in ³	Gas Cushion Type:	
Resistivity: 0.00 ohm.m	Gas Cushion Pressure: psig	
Salinity: 1800.00 ppm		
Filter Cake: 1.00 inches		

Recovery Information

Recovery Table

Length ft	Description	Volume bbl
186.00	m c w 40m 60w	0.915
1023.00	salt water 100w	12.729

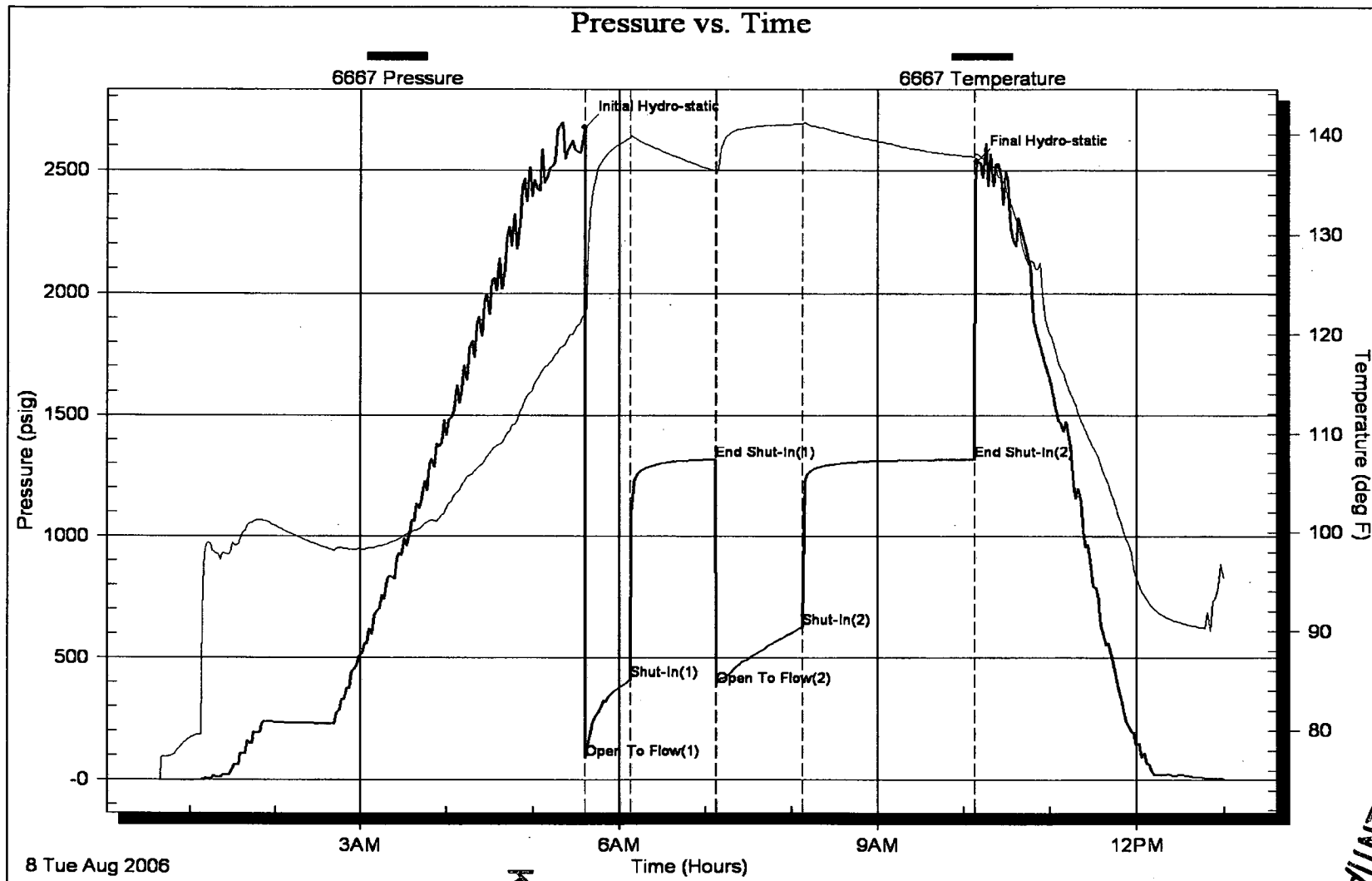
Total Length: 1209.00 ft Total Volume: 13.644 bbl

Num Fluid Samples: 0 Num Gas Bombs: 0 Serial #:

Laboratory Name: Laboratory Location:

Recovery Comments: sampler 550psi 2000ml water
 nw .070 @103*f = 72,500 chlorides

RECEIVED
 SEP 08 2006
 KCC WICHITA



8 Tue Aug 2006

KCC
AUG 23 2006
CONFIDENTIAL

RECEIVED
SEP 08 2006
KCC WICHITA



Weatherford® Completion Systems

DRILL STEM TEST REPORT

Prepared For: EOG Resources

3817 NW Expressway Ste 500
Oklahoma City OK 73112

ATTN: EOG Resources

8 31 37 Stevens KS

River Bend #8-1

Start Date: 2006.08.09 @ 22:30:46

End Date: 2006.08.10 @ 10:14:31

Job Ticket #: 24505 DST #: 2

KCC
AUG 23 2006
CONFIDENTIAL

RECEIVED
SEP 08 2006
KCC WICHITA

ALPINE OIL SERVICES CORPORATION
2460, 240 - 4 Avenue S.W. Calgary, AB. T2P 4H4
ph: 263-7800 fax: 264-7260

KCC
AUG 23
CONFIDENTIAL



Weatherford® Completion Systems

DRILL STEM TEST REPORT

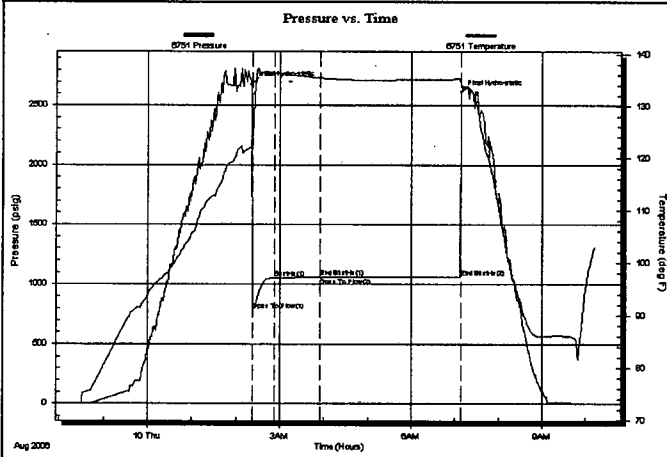
EOG Resources River Bend #8-1
 3817 NW Expressway Ste 500 8 31 37 Stevens KS
 Oklahoma City OK 73112 Job Ticket: 24505 DST#: 2
 ATTN: EOG Resources Test Start: 2006.08.09 @ 22:30:46

GENERAL INFORMATION:

Formation: Morrow
 Deviated: No Whipstock: ft (KB) Test Type: Conventional Bottom Hole
 Time Tool Opened: 02:22:31 Tester: Harley Davidson
 Time Test Ended: 10:14:31 Unit No: 33
 Interval: 5573.00 ft (KB) To 5700.00 ft (KB) (TVD) Reference Elevations: 3121.00 ft (KB)
 Total Depth: 5700.00 ft (KB) (TVD) 3109.00 ft (CF)
 Hole Diameter: 7.88 inches Hole Condition: Fair KB to GR/CF: 12.00 ft

Serial #: 6751 Inside
 Press@RunDepth: 1054.84 psig @ 5575.00 ft (KB) Capacity: 7000.00 psig
 Start Date: 2006.08.09 End Date: 2006.08.10 Last Calib.: 1899.12.30
 Start Time: 22:30:47 End Time: 10:14:31 Time On Btm: 2006.08.10 @ 02:21:16
 Time Off Btm: 2006.08.10 @ 07:08:31

TEST COMMENT: IF BOB ASAO Weak blow off bottom
 ISI No blow back
 FF No blow
 FSI No blow back



PRESSURE SUMMARY			
Time (Mn.)	Pressure (psig)	Temp (deg F)	Annotation
0	2680.94	122.18	Initial Hydro-static
2	783.85	124.57	Open To Flow (1)
31	1054.84	136.48	Shut-In(1)
94	1059.82	135.51	End Shut-In(1)
94	1057.55	135.50	Open To Flow (2)
287	1060.74	135.32	End Shut-In(2)
288	2611.24	134.34	Final Hydro-static

RECEIVED
SEP 08 2006
KCC WICHITA

Recovery		
Length (ft)	Description	Volume (bbl)
2200.00	75%W 25%M	27.82

Gas Rates			
	Choke (inches)	Pressure (psig)	Gas Rate (Mcf/d)



Weatherford®
Completion Systems

DRILL STEM TEST REPORT

TOOL DIAGRAM

EOG Resources

River Bend #8-1

3817 NW Expressway Ste 500
 Oklahoma City OK 73112

8 31 37 Stevens KS

ATTN: EOG Resources

Job Ticket: 24505

DST#: 2

Test Start: 2006.08.09 @ 22:30:46

Tool Information

Drill Pipe:	Length: 5232.00 ft	Diameter: 3.80 inches	Volume: 73.39 bbl	Tool Weight: 2000.00 lb
Heavy Wt. Pipe:	Length: 0.00 ft	Diameter: 0.00 inches	Volume: 0.00 bbl	Weight set on Packer: 25000.00 lb
Drill Collar:	Length: 334.00 ft	Diameter: 2.25 inches	Volume: 1.64 bbl	Weight to Pull Loose: 125000.0 lb
			Total Volume: * 75.03 bbl	Tool Chased 0.00 ft
Drill Pipe Above KB:	24.00 ft			String Weight: Initial 91000.00 lb
Depth to Top Packer:	5573.00 ft			Final 101000.0 lb
Depth to Bottom Packer:	ft			
Interval between Packers:	126.00 ft			
Tool Length:	157.00 ft			
Number of Packers:	2	Diameter:	6.75 inches	
Tool Comments:				
Tool plugged after first shut in.				

KCC
 AUG 23 2006
 CONFIDENTIAL

Tool Description	Length (ft)	Serial No.	Position	Depth (ft)	Accum. Lengths
Change Over Sub	2.00			5544.00	
Shut In Tool	5.00			5549.00	
Sampler	3.00			5552.00	
Hydraulic tool	5.00			5557.00	
Jars	5.00			5562.00	
Safety Joint	2.00			5564.00	
Packer	5.00			5569.00	31.00 Bottom Of Top Packer
Packer	4.00			5573.00	
Stubb	1.00			5574.00	
Perforations	1.00			5575.00	
Recorder	0.00	6751	Inside	5575.00	
Perforations	23.00			5598.00	
Change Over Sub	1.00			5599.00	
Drill Pipe	93.00			5692.00	
Change Over Sub	1.00			5693.00	
Perforations	2.00			5695.00	
Recorder	0.00	11018	Outside	5695.00	
Bullnose	4.00			5699.00	126.00 Bottom Packers & Anchor
Total Tool Length:		157.00			



Weatherford®
Completion Systems

DRILL STEM TEST REPORT

FLUID SUMMARY

EOG Resources

River Bend #8-1

3817 NW Expressway Ste 500
 Oklahoma City OK 73112

8 31 37 Stevens KS

Job Ticket: 24505

DST#: 2

ATTN: EOG Resources

Test Start: 2006.08.09 @ 22:30:46

Mud and Cushion Information

Mud Type: Gel Chem

Cushion Type:

Oil API:

deg API

Mud Weight: 9.00 lb/gal

Cushion Length:

ft

Water Salinity:

4000 ppm

Viscosity: 45.00 sec/qt

Cushion Volume:

bbbl

Water Loss: 8.38 in³

Gas Cushion Type:

Resistivity: ohm.m

Gas Cushion Pressure:

psig

Salinity: 2400.00 ppm

Filter Cake: inches

Recovery Information

Recovery Table

Length ft	Description	Volume bbl
2200.00	75%W 25%M	27.818

Total Length: 2200.00 ft

Total Volume: 27.818 bbl

Num Fluid Samples: 0

Num Gas Bombs: 0

Serial #:

Laboratory Name:

Laboratory Location:

Recovery Comments: Sampler Data- 200 ML water @ 4000 CHL. NO GAS.

KCC
AUG 23 2006
CONFIDENTIAL



Weatherford®
Completion Systems

DRILL STEM TEST REPORT

GAS RATES

EOG Resources

River Bend #8-1

3817 NW Expressway Ste 500
Oklahoma City OK 73112

8 31 37 Stevens KS

Job Ticket: 24505

DST#: 2

ATTN: EOG Resources

Test Start: 2006.08.09 @ 22:30:46

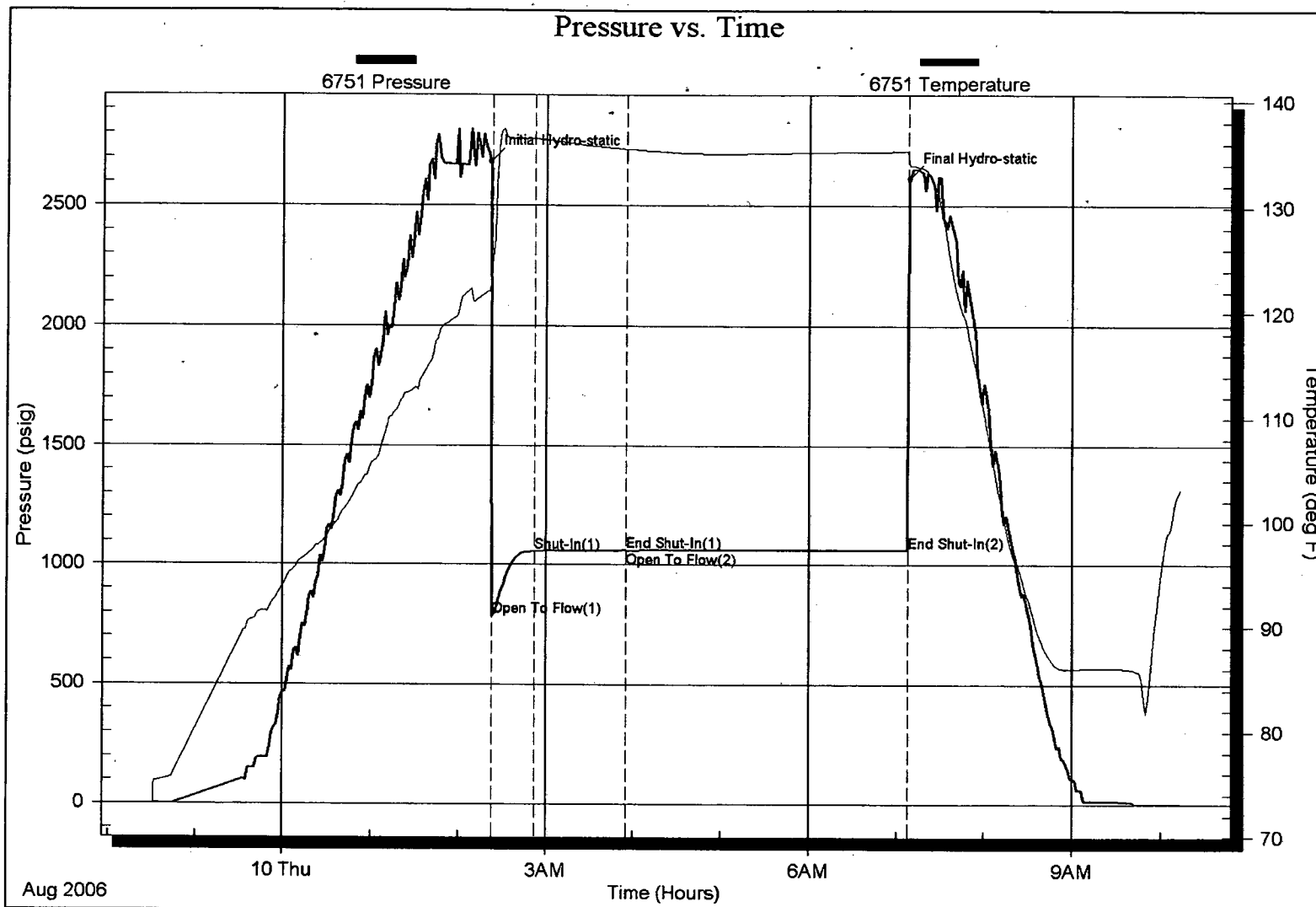
Gas Rates Information

Temperature: 59 deg C
Relative Density: 0.65
Z Factor: 0.8

Gas Rates Table

Flow Period	Elapsed Time	Choke (mm)	Pressure (kPaa)	Gas Rate (m ³ /d)
		0.00	0.00	0.00

KCC
AUG 23 2006
CONFIDENTIAL



KCC
AUG 23 2006
CONFIDENTIAL



08/23/08

3817 NW Expressway, Suite 500
Oklahoma City, OK 73112
(405) 246-3130

August 23, 2006

Kansas Corporation Commission
Conservation Division
Finney State Office Building
130 S. Market, Room 2078
Wichita, KS 67202-3802

KCC
AUG 23 2006
CONFIDENTIAL

Re: Electronic Logs and Information Confidentiality
Riverbend 8 #1
API No. 189-22545-01-00

Dear Sir or Madam:

EOG Resources, Inc. requests that all Electronic Logs and Applicable Information pertaining to the Riverbend 8 #1 lease are held confidential for the maximum applicable time period allowed by the Kansas Corporation Commission to include any future allowable extensions.

Regards,

A handwritten signature in cursive script that reads "Mindy Black".

Mindy Black
Regulatory Operations Assistant

RECEIVED
SEP 08 2006
KCC WICHITA