

CONFIDENTIAL

KANSAS CORPORATION COMMISSION
OIL & GAS CONSERVATION DIVISION

ORIGINAL

Form ACO-1
September 1999
Form Must Be Typed

7/26/08

WELL COMPLETION FORM
WELL HISTORY - DESCRIPTION OF WELL & LEASE

Operator: License # 5030
 Name: Vess Oil Corporation
 Address: 1700 Waterfront Parkway, Bldg. 500
 City/State/Zip: Wichita, KS 67206
 Purchaser: Eaglwing Trading, LP
 Operator Contact Person: W.R. Horigan
 Phone: (316) 682-1537 X103
 Contractor: Name: VAL Energy, Inc.
 License: 5822
 Wellsite Geologist: Paul Ramondetta
 Designate Type of Completion:
 New Well Re-Entry Workover
 Oil SWD SLOW Temp. Abd.
 Gas ENHR SIGW
 Dry Other (Core, WSW, Expl., Cathodic, etc)
 If Workover/Re-entry: Old Well Info as follows:
 Operator: _____
 Well Name: _____
 Original Comp. Date: _____ Original Total Depth: _____
 Deepening Re-perf. Conv. to Enhr./SWD
 Plug Back _____ Plug Back Total Depth _____
 Commingled _____ Docket No. _____
 Dual Completion _____ Docket No. _____
 Other (SWD or Enhr.?) _____ Docket No. _____

<u>4/3/07</u>	<u>4/16/07</u>	<u>5/4/07</u>
Spud Date or Recompletion Date	Date Reached TD	Completion Date or Recompletion Date

KCC
JUL 26 2007
CONFIDENTIAL

API No. 15 - 025-21407-00-00
 County: Clark
SE SE SW Sec. 20 Twp. 30S S. R. 23 East West
330' feet from (S) N (circle one) Line of Section
2310' feet from E (W) (circle one) Line of Section
 Footages Calculated from Nearest Outside Section Corner:
 (circle one) NE SE NW (SW)
 Lease Name: Pittman Well #: #1
 Field Name: Tay South
 Producing Formation: Mississippi
 Elevation: Ground: 2505' Kelly Bushing: 2515'
 Total Depth: 5528' Plug Back Total Depth: 5487'
 Amount of Surface Pipe Set and Cemented at 733 Feet
 Multiple Stage Cementing Collar Used? Yes No
 If yes, show depth set _____ Feet
 If Alternate II completion, cement circulated from _____
 feet depth to _____ w/ _____ sx cmt.

Drilling Fluid Management Plan ACT INH 8-11-08
 (Data must be collected from the Reserve Pit)
 Chloride content 5800 ppm Fluid volume 1800 bbls
 Dewatering method used hauling, evaporation
 Location of fluid disposal if hauled offsite:
 Operator Name: Gordon Keen
 Lease Name: Harmon License No.: 5993
 Quarter _____ Sec. 11 Twp. 33 S. R. 20 East West
 County: Comanche Docket No.: D-22034

INSTRUCTIONS: An original and two copies of this form shall be filed with the Kansas Corporation Commission, 130 S. Market - Room 2078, Wichita, Kansas 67202, within 120 days of the spud date, recompletion, workover or conversion of a well. Rule 82-3-130, 82-3-106 and 82-3-107 apply. Information of side two of this form will be held confidential for a period of 12 months if requested in writing and submitted with the form (see rule 82-3-107 for confidentiality in excess of 12 months). One copy of all wireline logs and geologist well report shall be attached with this form. ALL CEMENTING TICKETS MUST BE ATTACHED. Submit CP-4 form with all plugged wells. Submit CP-111 form with all temporarily abandoned wells.

All requirements of the statutes, rules and regulations promulgated to regulate the oil and gas industry have been fully complied with and the statements herein are complete and correct to the best of my knowledge.

Signature: Bacey Coats
 Title: Operations Engineer Date: 7/26/07
 Subscribed and sworn to before me this 26 day of July
 20 07
 Notary Public: Ronald Fowler
 Date Commission Expires: 7-21-11

RONALD FOWLER
Notary Public - State of Kansas
My Appt. Expires 7-21-11

KCC Office Use ONLY

Letter of Confidentiality Attached
 If Denied, Yes Date: _____
 Wireline Log Received
 Geologist Report Received
 UIC Distribution

RECEIVED
KANSAS CORPORATION COMMISSION
AUG 02 2007

CONSERVATION DIVISION
WICHITA, KS

Operator Name: Vess Oil Corporation Lease Name: Pittman Well #: #1
 Sec. 20 Twp. 30S S. R. 23 East West County: Clark

INSTRUCTIONS: Show important tops and base of formations penetrated. Detail all cores. Report all final copies of drill stems tests giving interval tested, time tool open and closed, flowing and shut-in pressures, whether shut-in pressure reached static level, hydrostatic pressures, bottom hole temperature, fluid recovery, and flow rates if gas to surface test, along with final chart(s). Attach extra sheet if more space is needed. Attach copy of all Electric Wireline Logs surveyed. Attach final geological well site report.

Drill Stem Tests Taken <input checked="" type="checkbox"/> Yes <input type="checkbox"/> No <i>(Attach Additional Sheets)</i> Samples Sent to Geological Survey <input checked="" type="checkbox"/> Yes <input type="checkbox"/> No Cores Taken <input type="checkbox"/> Yes <input checked="" type="checkbox"/> No Electric Log Run <input checked="" type="checkbox"/> Yes <input type="checkbox"/> No <i>(Submit Copy)</i> List All E. Logs Run: Dual Induction Density-Neutron	<input checked="" type="checkbox"/> Log Formation (Top), Depth and Datum <input type="checkbox"/> Sample Name Top Datum SEE ATTACHED <div style="text-align: center;"> RECEIVED KANSAS CORPORATION COMMISSION AUG 02 2007 CONSERVATION DIVISION WICHITA, KS </div>
---	--

KCC
JUL 26 2007
CONFIDENTIAL

CASING RECORD <input checked="" type="checkbox"/> New <input type="checkbox"/> Used							
Report all strings set-conductor, surface, intermediate, production, etc.							
Purpose of String	Size Hole Drilled	Size Casing Set (In O.D.)	Weight Lbs. / Ft.	Setting Depth	Type of Cement	# Sacs Used	Type and Percent Additives
conductor	30	20	94	70	grout		
surface	12-1/4	8-5/8	24	733'	A Con/Class A	200 / 125	3% cc/ 3% cc, 2% gel
production	7-7/8	5-1/2	15.5	5527'	60/40 pozmix/AA-2	25 / 125	

ADDITIONAL CEMENTING / SQUEEZE RECORD				
Purpose:	Depth Top Bottom	Type of Cement	#Sacks Used	Type and Percent Additives
<input type="checkbox"/> Perforate <input type="checkbox"/> Protect Casing <input type="checkbox"/> Plug Back TD <input type="checkbox"/> Plug Off Zone				

Shots Per Foot	PERFORATION RECORD - Bridge Plugs Set/Type Specify Footage of Each Interval Perforated	Acid, Fracture, Shot, Cement Squeeze Record (Amount and Kind of Material Used)	Depth
2	5446-5454	1250 gal 15% NE FE acid	5446-54

TUBING RECORD		Size	Set At	Packer At	Liner Run	<input type="checkbox"/> Yes <input checked="" type="checkbox"/> No
		2-7/8"	5476'	none		
Date of First, Resumerd Production, SWD or Enhr.			Producing Method			
5/24/07			<input checked="" type="checkbox"/> Flowing <input checked="" type="checkbox"/> Pumping <input type="checkbox"/> Gas Lift <input type="checkbox"/> Other (Explain)			
Estimated Production Per 24 Hours	Oil Bbls.	Gas Mcf	Water Bbls.	Gas-Oil Ratio	Gravity	
	111	TSTM	5			

Disposition of Gas Vented Sold Used on Lease *(If vented, Submit ACO-18.)* METHOD OF COMPLETION Open Hole Perf. Dually Comp. Commingled Other (Specify) _____

Production Interval 5446-5454



RECEIVED
KANSAS CORPORATION COMMISSION

AUG 02 2007

TREATMENT REPORT

JUL 28 CONSERVATION DIVISION
WICHITA, KS

Customer: **Vess Oil Corporation** Lease No.: **CONFIDENTIAL** Date: **4-3-07**
 Lease: **Pittman** Well #: **1**
 Field Order #: **5472** Station: **Pratt** Casing: **8 5/8" 23 Lb.** Depth: **737 Ft.** County: **Clark** State: **KS.**
 Type Job: **Surface - New Well** Formation: Legal Description: **20-50S-23W**

PIPE DATA		PERFORATING DATA		FLUID USED		TREATMENT RESUME	
Casing Size 8 5/8"	Tubing Size 2 3/8"	Shots/Ft.		ACD 200 sacks A-Con	RATE With 3% C.C., .25 Lb./sk.	PRESS 38 C.P.	ISIP .25 Lb./sk.
Depth 737 Ft.	Depth	From	To	Pre-Flush 12 Lb./Gal., 15.46 Gal./sk.	Clay 2.56 C.P./sk.	15 Min.	Cell Flake
Volume 17.2 Bbl.	Volume	From	To	Pre-Flush 125 sacks Common	Min with 2% Gel, 3% C.C.,	10 Min.	
Max Press 250 P.S.I.	Max Press	From	To	Pre-Flush .25 Lb./sk. Cellflake	Avg Cellflake	15 Min.	
Well Connection Plug Containe	Annulus Vol.	From	To	Flush 15.04 Lb./Gal., 6.50 Gal./sk.	Flt. Used 1.36 C.P./sk.	Annulus Pressure	
Plug Depth 675 Ft.	Packer Depth	From	To	Flush 44.4 Bbl. Fresh Water	Gas Volume	Total Load	

Customer Representative: **Ron Moon** Station Manager: **David Scott** Operator: **Clarence R. Messick**

Service Units	19,870	19,905	19,831	19,841
Driver Names	Messick	McGuire	LaChance	Rose

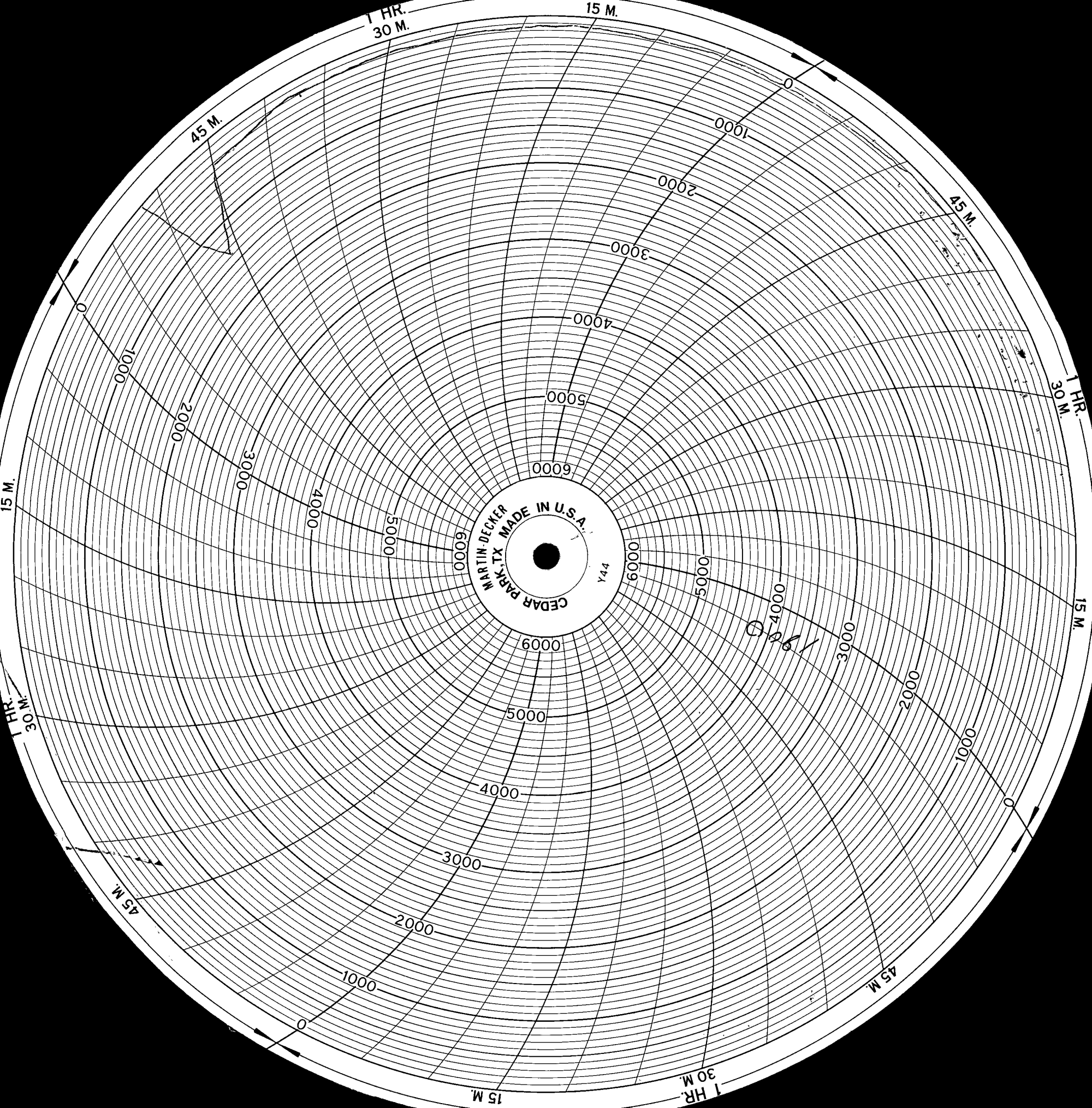
Time	P.M. Casing Pressure	Tubing Pressure	Bbls. Pumped	Rate	Service Log
10:00					Trucks on location and hold safety meeting. Val Drilling start to run Shoe Joint with Auto-Fill Baffle Plate screwed into collar and a total of 16 joints new 8 5/8" 23 Lb./Ft. casing.
3:15					Casing in well. Circulate minutes.
7:25	250			6	Start Fresh Water Pre-Flush.
	200		15	6	Start mixing 200 sacks A-CON Cement.
	150		106	6	Start mixing 125 sacks Common Cement.
	100		136		Stop pumping. Shut in well. Release plug. Open well.
7:55	100			5	Start Fresh Water Displacement.
8:05	200		44.5		Plug down. Circulate 20 sks. cement to pit. Open Release. Insert did not hold. Reland Plug and shut in well. Washup pump truck.
8:30					Job Complete. Thanks, Clarence, Mike, Stephen

Vess Oil Corp
Pittman #1

4-16-07

tick # 14858
5¢ longstring

RECEIVED
KANSAS CORPORATION COMMISSION
AUG 02 2007
CONSERVATION DIVISION
WICHITA, KS



Customer Vess Oil Corp	Lease No.	Date 4-16-07
Lease Pittman	Well # 1	
Field Order # 14358	Station Liberal	Casing 5 1/2
		Depth 5534.66
Type Job Longstring (NW)	Formation	County Clark
		State KS
		Legal Description 20-305-23W

PIPE DATA		PERFORATING DATA		FLUID USED		TREATMENT RESUME		
Casing Size	Tubing Size	Shots/Ft		Acid		RATE	PRESS	ISIP
5 1/2			25 sks	60/40 POZ				
Depth 5534.66	Depth	From	To	Pre Pad	Max			5 Min.
Volume 130.77	Volume	From	To	Pad	Min			10 Min.
Max Press	Max Press	From	To	Frac	Avg			15 Min.
Well Connection 2C	Annulus Vol.	From	To			HHP Used		Annulus Pressure
Plug Depth	Packer Depth	From	To	Flush		Gas Volume		Total Load

Customer Representative Casper Coats	Station Manager Jerry Bennett	Treater Jason Hulsey
Service Units 19891 19827 19843 19805 19883		
Driver Names J Hulsey Travis Quillin Alfonso Ortiz		

Time	Casing Pressure	Tubing Pressure	Bbls. Pumped	Rate	Service Log
1200					on loc
1400					run float equip
1800					spot equip
1810					safety
1820					rig up
1940					switch
1943	100 psi		500 gal	3 bbl	pump mud flush
1946	100 psi		5 bbl	3 bbl	pump scavenger
1952	100 psi		32 bbl	3 bbl	pump amt
2010					wash pump & lines
2018	100 psi			5 bbl	pump disp
2039	300 psi		109 bbl	5 bbl	caught amt
2045	1400 psi		130.77 bbl		bump plug
2050					check floats / held
2055			5 bbl		pump rat / mouse

JUL 26 2007
KCC
CONFIDENTIAL

RECEIVED
KANSAS CORPORATION COMMISSION

AUG 02 2007

CONSERVATION DIVISION
WICHITA, KS



FIELD ORDER 14858 ✓

Subject to Correction

Date 4-16-07	Customer ID	Lease Pittman	Well # 1	Legal 20-30s-23W
Vess Oil Corp		County Clark County	State KS	Station Liberal
CHARGE	Depth	Formation	Shoe Joint 40.08	
	Casing 5/2	Casing Depth 5534.66	TD	Job Type Longstring (NW)
	Customer Representative Casey Coats	Treater Jason Hulsey		TRB

AFE Number	PO Number	Materials Received by X Casey Coats
------------	-----------	--

Station Code	Product Code	QUANTITY	MATERIALS, EQUIPMENT, and SERVICES USED	UNIT PRICE	AMOUNT
L	D205	125 sk	AA-2		2066.25
L	D203	50 sk	60/40 Poz		535.50
L	C195	95 lb	FLA-322		783.75
L	C194	32 lb	Cellflake		118.40
L	C221	712 lb	S-ht		178.00
L	C243	24 lb	Deformax		82.80
L	C312	49 lb	Gas Blok		458.35
L	C302	500 gal	Mud flush		430.00
L	F101	10 ea	turbolizer 5/2		742.00
L	F121	2 ea	Basket 5/2		537.00
L	F171	1 ea	IR Latch down plug & baffle 5/2		250.00
L	F211	1 ea	Auto fill float shoe 5/2		320.00
L	E100	140 mi	Away vehicle mileage		700.00
L	E101	70 mi	Pickup mileage		210.00
L	E104	564 tm	Proppant & bulk delivery		902.40
L	E107	175 sk	Cement service charge		262.50
L	R212	1 ea	Casing Cement Pump		2,048.00
L	R701	1 ea	Cement head rental		250.00
L	R702	1 ea	Casing Swivel		150.00
RECEIVED KANSAS CORPORATION COMMISSION					
AUG 02 2007					
CONSERVATION DIVISION WICHITA, KS					
Discounted total					9261.09

KCC
JUL 26 2007
CONFIDENTIAL

VESS OIL CORPORATION

7/26/08

July 26, 2007

KCC
JUL 25 2007
CONFIDENTIAL

Kansas Corporation Commission
Conservation Division
130 S. Market, Room 2078
Wichita, KS 67202

Re: API #15-025-21407-00-00
Pittman #1
SE SE SW
Sec. 20-30S-23W
Clark County, KS

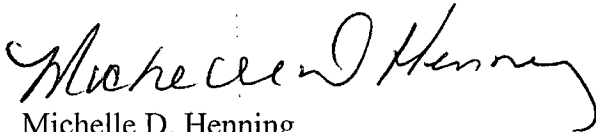
Gentlemen:

Enclosed is the completed ACO-1 and attachments for the Pittman #1.

We are requesting that the information on this ACO-1 be held confidential for twelve (12) months.

If you have any questions please contact our office.

Very truly yours,



Michelle D. Henning
Production

/mdh

Enclosures

RECEIVED
KANSAS CORPORATION COMMISSION

AUG 02 2007

CONSERVATION DIVISION
WICHITA, KS