

For KCC Use: 11-24-08  
 Effective Date: 3  
 District #: \_\_\_\_\_  
 SGA?  Yes  No

KANSAS CORPORATION COMMISSION  
 OIL & GAS CONSERVATION DIVISION

Form C-1  
 October 2007  
 Form must be Typed  
 Form must be Signed  
 All blanks must be Filled

NOTICE OF INTENT TO DRILL

Must be approved by KCC five (5) days prior to commencing well

Expected Spud Date: 11 05 2008  
 month day year

OPERATOR: License# 34027 ✓  
 Name: CEP Mid-Continent LLC  
 Address 1: 15 West Sixth Street, Suite 1400  
 Address 2: \_\_\_\_\_  
 City: Tulsa State: OK Zip: 74119 + 5415  
 Contact Person: David Spitz, Engineering Manager  
 Phone: (918) 877-2912, ext. 309

CONTRACTOR: License# 34126 / 33832  
 Name: Smith Oilfield Services (vert. to KOP) / Pense Bros. Drilg. (horizontal section)

Well Drilled For:  Oil  Gas  Enh Rec  Storage  Disposal  Seismic; # of Holes \_\_\_\_\_  Other: \_\_\_\_\_  
 Well Class:  Infield  Pool Ext.  Wildcat  Other \_\_\_\_\_  
 Type Equipment:  Mud Rotary  Air Rotary  Cable

Operator: \_\_\_\_\_  
 Well Name: \_\_\_\_\_  
 Original Completion Date: \_\_\_\_\_ Original Total Depth: \_\_\_\_\_

Directional, Deviated or Horizontal wellbore?  Yes  No  
 If Yes, true vertical depth: 1,382'

Bottom Hole Location: 1685' FSL, 1691' FEL in SE/4 Sec. 3, T34S, R14E

\* KCC DKT #: 09-CONS-057-CHOR

Spot Description: \_\_\_\_\_  
 NE SW SE Sec. 3 Twp. 34 S. R. 14  E  W  
 (100/100) 830 feet from  N /  S Line of Section  
1,240 feet from  E /  W Line of Section

Is SECTION:  Regular  Irregular?

(Note: Locate well on the Section Plat on reverse side)

County: Montgomery

Lease Name: KAMINSKA Well #: 3-6

Field Name: Cherokee Basin

Is this a Prorated / Spaced Field?  Yes  No

Target Formation(s): Rowe

Nearest Lease or unit boundary line (in footage): 830'

Ground Surface Elevation: 852' feet MSL

Water well within one-quarter mile:  Yes  No

Public water supply well within one mile:  Yes  No

Depth to bottom of fresh water: 11'

Depth to bottom of usable water: 4-175'

Surface Pipe by Alternate:  I  II

Length of Surface Pipe Planned to be set: 20' est.

Length of Conductor Pipe (if any): None

Projected Total Depth: 3,379'

Formation at Total Depth: Rowe

Water Source for Drilling Operations:  Well  Farm Pond  Other: City

DWR Permit #: \_\_\_\_\_

(Note: Apply for Permit with DWR )

Will Cores be taken?  Yes  No

If Yes, proposed zone: \_\_\_\_\_

AFFIDAVIT

RECEIVED  
 KANSAS CORPORATION COMMISSION

The undersigned hereby affirms that the drilling, completion and eventual plugging of this well will comply with K.S.A. 55 et. seq.

It is agreed that the following minimum requirements will be met:

OCT 21 2008

CONSERVATION DIVISION  
 WICHITA, KS

1. Notify the appropriate district office **prior** to spudding of well;
2. A copy of the approved notice of intent to drill **shall be** posted on each drilling rig;
3. The minimum amount of surface pipe as specified below **shall be set** by circulating cement to the top; in all cases surface pipe **shall be** set through all unconsolidated materials plus a minimum of 20 feet into the underlying formation.
4. If the well is dry hole, an agreement between the operator and the district office on plug length and placement is necessary **prior to plugging**;
5. The appropriate district office will be notified before well is either plugged or production casing is cemented in;
6. If an ALTERNATE II COMPLETION, production pipe shall be cemented from below any usable water to surface within **120 DAYS** of spud date. Or pursuant to Appendix "B" - Eastern Kansas surface casing order #133,891-C, which applies to the KCC District 3 area, alternate II cementing must be completed within 30 days of the spud date or the well shall be plugged. **In all cases, NOTIFY district office** prior to any cementing.

I hereby certify that the statements made herein are true and correct to the best of my knowledge and belief.

Date: 9/30/08 Signature of Operator or Agent: [Signature] Title: Engineering Manager

For KCC Use ONLY  
 API # 15 - 125-31834-01-00  
 Conductor pipe required None feet  
 Minimum surface pipe required 20 feet per ALT.  I  II  
 Approved by: [Signature]  
 This authorization expires: 11-19-09  
 (This authorization void if drilling not started within 12 months of approval date.)  
 Spud date: \_\_\_\_\_ Agent: \_\_\_\_\_

Remember to:

- File Drill Pit Application (form CDP-1) with Intent to Drill;
- File Completion Form ACO-1 within 120 days of spud date;
- File acreage attribution plat according to field proration orders;
- Notify appropriate district office 48 hours prior to workover or re-entry;
- Submit plugging report (CP-4) after plugging is completed (within 60 days);
- Obtain written approval before disposing or injecting salt water.
- If this permit has expired (See: authorized expiration date) please check the box below and return to the address below.

Well Not Drilled - Permit Expired Date: \_\_\_\_\_  
 Signature of Operator or Agent: \_\_\_\_\_

3  
34  
14  
 E  
 W

**IN ALL CASES PLOT THE INTENDED WELL ON THE PLAT BELOW**

*Plat of acreage attributable to a well in a prorated or spaced field*

**If the intended well is in a prorated or spaced field, please fully complete this side of the form.** If the intended well is in a prorated or spaced field complete the plat below showing that the well will be properly located in relationship to other wells producing from the common source of supply. Please show all the wells and within 1 mile of the boundaries of the proposed acreage attribution unit for gas wells and within 1/2 mile of the boundaries of the proposed acreage attribution unit for oil wells.

API No. 15 - 125-31834-01-00

Operator: CEP Mid-Continent LLC

Lease: KAMINSKA #3-6

Well Number: \_\_\_\_\_

Field: Cherokee Basin

Number of Acres attributable to well: 320

QTR/QTR/QTR/QTR of acreage: \_\_\_\_\_ - NE - SW - SW

Location of Well: County: Montgomery

830 feet from  N /  S Line of Section

1,240 feet from  E /  W Line of Section

Sec. 3 Twp. 34 S. R. 14  E  W

Is Section:  Regular or  Irregular

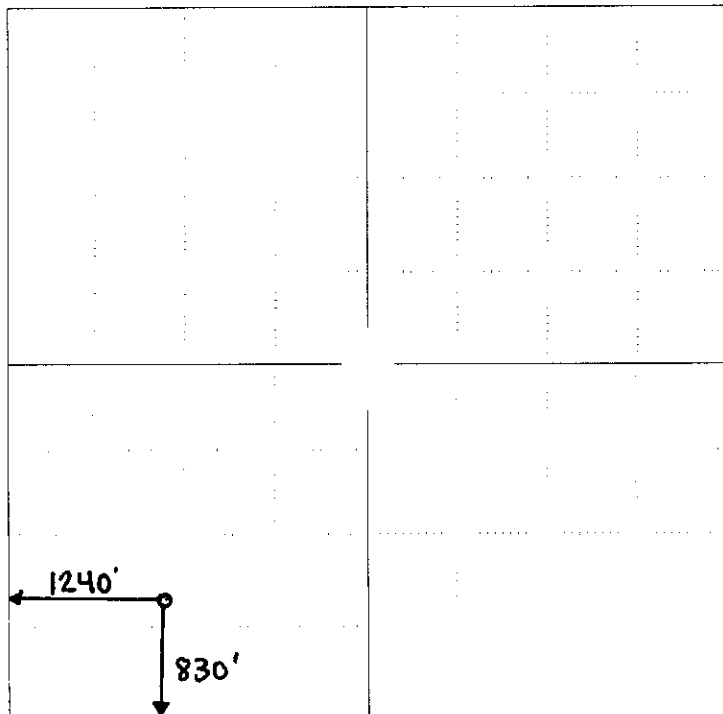
**If Section is Irregular, locate well from nearest corner boundary.**

Section corner used:  NE  NW  SE  SW

**PLAT**

*(Show location of the well and shade attributable acreage for prorated or spaced wells.)*

*(Show footage to the nearest lease or unit boundary line.)*

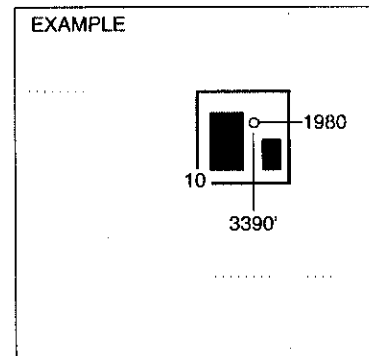


**NOTE: In all cases locate the spot of the proposed drilling locaton.**

RECEIVED  
KANSAS CORPORATION COMMISSION

OCT 21 2008

CONSERVATION DIVISION  
WICHITA, KS



SEWARD CO.

**In plotting the proposed location of the well, you must show:**

1. The manner in which you are using the depicted plat by identifying section lines, i.e. 1 section, 1 section with 8 surrounding sections, 4 sections, etc.
2. The distance of the proposed drilling location from the south / north and east / west outside section lines.
3. The distance to the nearest lease or unit boundary line (in footage).
4. If proposed location is located within a prorated or spaced field a certificate of acreage attribution plat must be attached: (CO-7 for oil wells; CG-8 for gas wells).

15-125-31834-01-00

KS

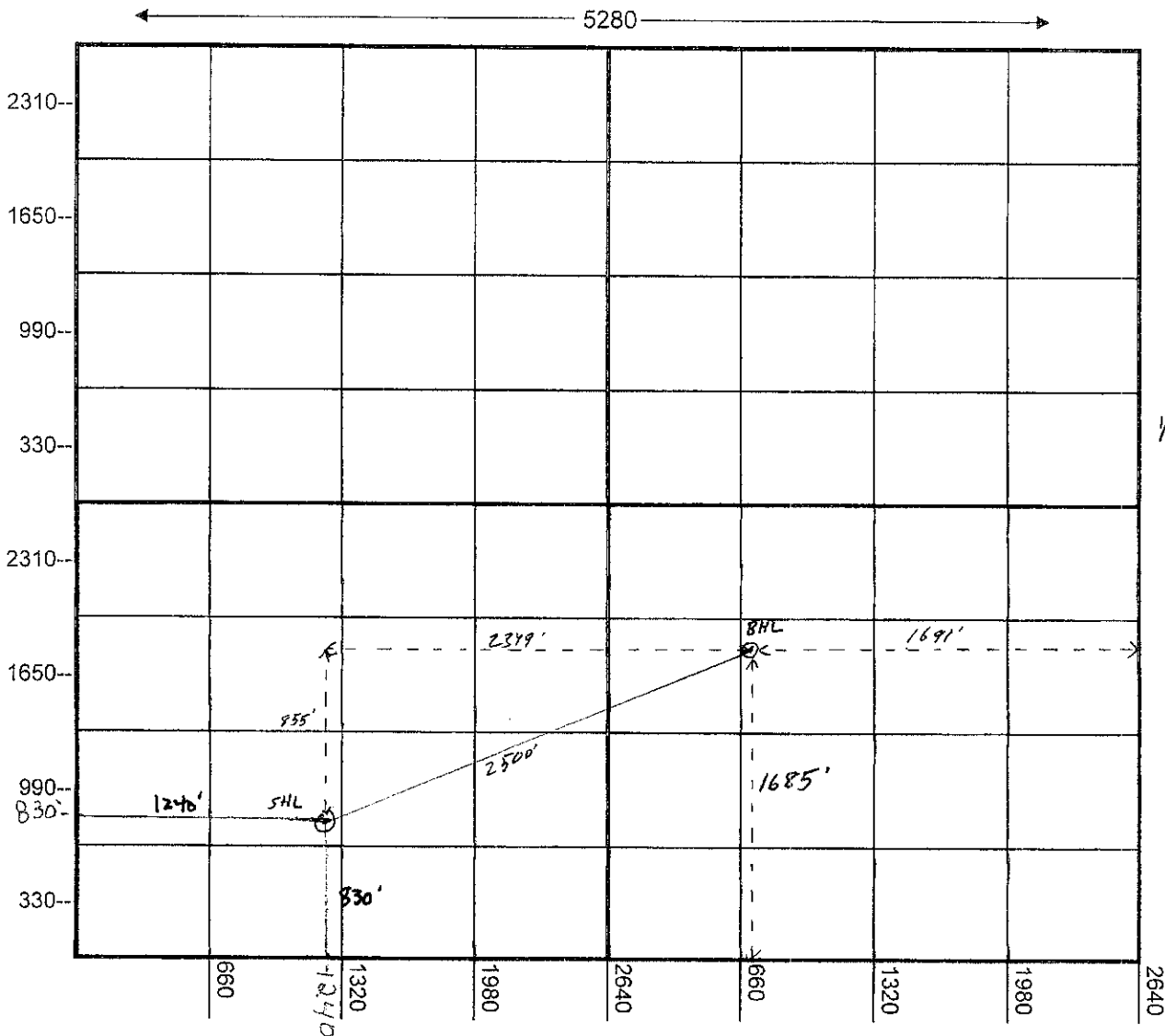
KAMINSKA #3-6  
CEP MID-CONTINENT, LLC

RECEIVED  
KANSAS CORPORATION COMMISSION

OCT 21 2008

CONSERVATION DIVISION  
WICHITA, KS

SECTION 3      TOWNSHIP 34s      RANGE 14e



N37° 06' 45.7"  
W95° 52' 10.6"  
ELEVATION: 852

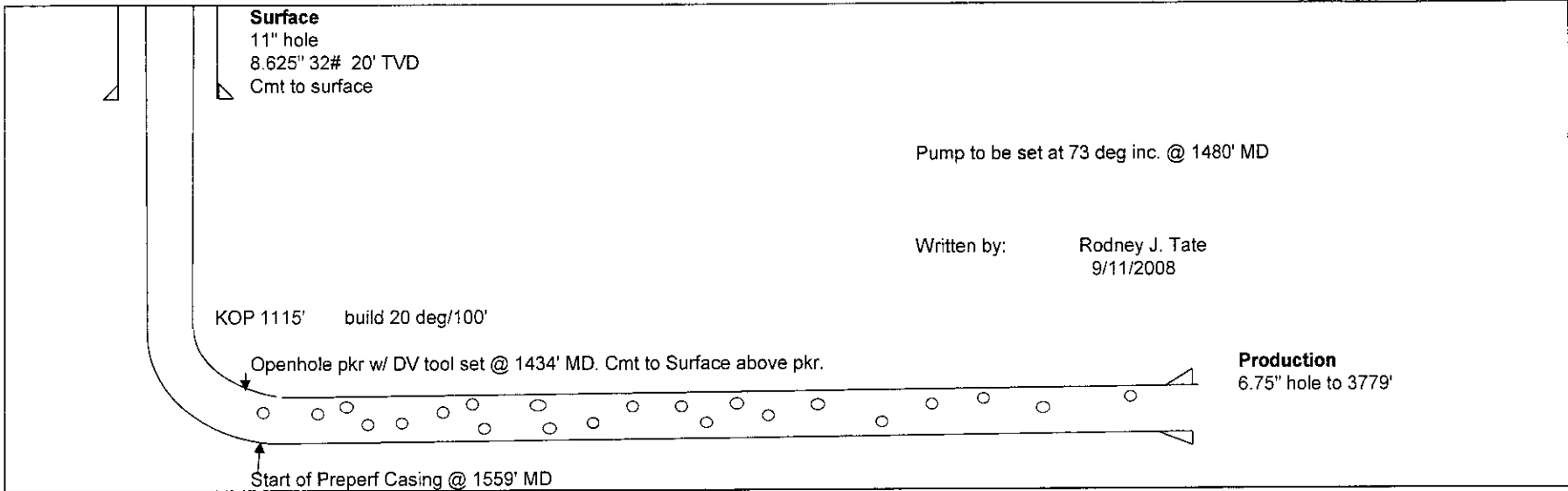
= ONLY HAVE BELOW 800' LEASED.  
SURFACE TO 700' IS EXCLUDED  
FROM LEASE.

Proposed: RJA 9/11/08

15-125-31834-01-00

**Proposed Kaminska 3-6 Wellbore Diagram**  
 Proposed Surface Loc: SW/4 Sec 03 T34S – R14E, Montgomery Co., KS  
 Proposed Surface Loc: 830' FSL, 1240' FWL, ELEV 852'  
 Proposed Bottomhole Loc: SE/4 Sec 03 T34S – R14E  
 Proposed Bottomhole Loc, Start of Target: 929' FSL, 1512' FWL Sec 3  
 Proposed Bottomhole Loc, End of Target: 1,685' FSL, 1,691' FEL Sec 3 Azim 70°  
 Proposed Lateral Length: 2,210'  
 Vertical Section: 2,500'

	Size	Wt	# jts.	Length	MD	TVD
Surface Casing	8.625"	20#	NA	20.00	20.00	20
Production Casing	4.5"	10.5#	45	1,406.00	1,406.00	1,355
Stage Tool	4.5"			2.00	1,408.00	1,357
Ann. Csg. Pkr	4.5"			26.00	1,434.00	1,370
Production Casing	4.5"	10.5#	2	62.00	1,496.00	1,393
4.5" x 3.5" X-over				1.00	1,497.00	1,394
Blank Liner	3.5"	9.3#	2	62.00	1,559.00	1,401
Preperf Liner	3.5"	9.3#	70	2,180.00	3,739.00	1,382
Tapered liner	3.5"			31.00	3,770.00	1,382



33 34 35  
 1 2 3 4 5 6 7 8 9 10 11 12  
 RECEIVED  
 KANSAS CORPORATION REGISTRATION DIVISION  
 8002121300  
 SEP 16 2008

**Kaminska 3-6 Drilling Procedure**

Written by: Rodney J. Tate 09/11/08

Constellation Energy Partners Mid-Continent, LLC  
SW/4 Section 3 T34S – R14E  
Surface Location: 830' FSL, 1240' FWL

**Objective:**

Drill a horizontal lateral into the Rowe. Run 3.5" casing with the pre-perforated casing in the lateral along with an external cement packer above the lateral. Circulate cement above the ECP to surface. Run tubing, rods and pump and put on production.

- 1.) MIRU drilling rig. Drill approx 20' of 11" hole. Run 8.625" 32# casing. Circulate cement to surface. (footage contract).
- 2.) Drill to 1115' MD with 6.75" hammer bit. Run open hole logs. Load hole with produced water and wait for directional rig and services.
- 3.) PU 2 or 3 type 6.75" bit, near bit gamma, motor, float sub, UBHO, NMDC, 3.5" IF DP. TIH.
- 4.) Drill a 6.75" hole, 70° azimuth at a build rate approximately 20.00°/100' to an approximate TVD of 1401' or at an inclination of 90.5°. Hold build angle until Rowe coal is found. Drill hole with fresh water, and polymer sweeps as needed. TOH with build assembly.
- 5.) TIH with hold assembly. Drill approximately 2210' of coal or more if able. Drill hole with fresh water, and polymer sweeps as needed. Estimated TD is 3779' MD and 1382' TVD. TOH. LD directional tools and DP.
- 6.) PU 3.5" 9.3# Pre-perforated Casing with turn down collars, tapered perforated joint on bottom jt, ECP, stage tool, 4.5" 10.5# above ECP to surface. Inflate ECP. Open port hole above ECP and cmt to surface. Release drilling rig.

RECEIVED  
KANSAS CORPORATION COMMISSION  
OCT 21 2008  
CONSERVATION DIVISION  
WICHITA, KS

# Scientific Drilling International Planning Report

<b>Company:</b> Constellation Energy Partners	<b>Date:</b> 9/11/2008	<b>Time:</b> 13:30:25	<b>Page:</b> 1
<b>Field:</b> Montgomery County, KS	<b>Co-ordinate(NE) Reference:</b> Well: Kaminska 3-6, True North		
<b>Site:</b> Section 3 - 34S - 14E	<b>Vertical (TVD) Reference:</b> Kaminska 3-6 857.0		
<b>Well:</b> Kaminska 3-6	<b>Section (VS) Reference:</b> Well (0.00N,0.00E,70.00Azi)		
<b>Wellpath:</b> Original Wellpath	<b>Plan:</b> Plan #1		

<b>Field:</b> Montgomery County, KS Montgomery County, KS	
<b>Map System:</b> US State Plane Coordinate System 1983	<b>Map Zone:</b> Kansas, Southern Zone
<b>Geo Datum:</b> GRS 1980	<b>Coordinate System:</b> Well Centre
<b>Sys Datum:</b> Mean Sea Level	<b>Geomagnetic Model:</b> igrf2005

**Site:** Section 3 - 34S - 14E  
Sec 3-34S-14E

<b>Site Position:</b>	<b>Northing:</b> ft	<b>Latitude:</b>
<b>From:</b> Lease Line	<b>Easting:</b> ft	<b>Longitude:</b>
<b>Position Uncertainty:</b> 0.0 ft		<b>North Reference:</b> True
<b>Ground Level:</b> 0.0 ft		<b>Grid Convergence:</b> 1.62 deg

<b>Well:</b> Kaminska 3-6	<b>Slot Name:</b>		
Kaminska 3-6			
<b>Well Position:</b> +N/-S 0.0 ft	<b>Northing:</b> 1121561.03 ft	<b>Latitude:</b> 36 6 45.700 N	
+E/-W 0.0 ft	<b>Easting:</b> 2089557.66 ft	<b>Longitude:</b> 95 52 10.600 W	
<b>Position Uncertainty:</b> 0.0 ft			

<b>Wellpath:</b> Original Wellpath	<b>Drilled From:</b> Surface	
Original Wellpath Kaminska 3-6	<b>Tie-on Depth:</b> 0.0 ft	
<b>Current Datum:</b> Kaminska 3-6	<b>Above System Datum:</b> Mean Sea Level	
<b>Magnetic Data:</b> 9/11/2008	<b>Declination:</b> 3.67 deg	
<b>Field Strength:</b> 51852 nT	<b>Mag Dip Angle:</b> 64.84 deg	
<b>Vertical Section:</b> Depth From (TVD) ft	<b>+N/-S</b> ft	<b>+E/-W</b> ft
0.0	0.0	0.0
		<b>Direction</b> deg
		70.00

RECEIVED  
KANSAS CORPORATION COMMISSION  
**OCT 21 2008**  
CONSERVATION DIVISION  
WICHITA, KS

<b>Plan:</b> Plan #1	<b>Date Composed:</b> 9/11/2008
Kaminska 3-6 SHL: 1240 FSL 830 FWL	<b>Version:</b> 1
<b>Principal:</b> Yes	<b>Tied-to:</b> From Surface

**Plan Section Information**

MD ft	Incl deg	Azim deg	TVD ft	+N/-S ft	+E/-W ft	DLS deg/100ft	Build deg/100ft	Turn deg/100ft	TFO deg	Target
0.0	0.00	70.00	0.0	0.0	0.0	0.00	0.00	0.00	0.00	
1115.0	0.00	70.00	1115.0	0.0	0.0	0.00	0.00	0.00	0.00	
1567.5	90.50	70.00	1401.5	98.8	271.6	20.00	20.00	0.00	70.00	
3778.6	90.50	70.00	1382.2	855.1	2349.2	0.00	0.00	0.00	0.00	TGT Kaminska 3-6

**Section 1 : Start Hold**

MD ft	Incl deg	Azim deg	TVD ft	+N/-S ft	+E/-W ft	VS ft	DLS deg/100ft	Build deg/100ft	Turn deg/100ft	TFO deg
0.0	0.00	70.00	0.0	0.0	0.0	0.0	0.00	0.00	0.00	0.00
1100.0	0.00	70.00	1100.0	0.0	0.0	0.0	0.00	0.00	0.00	70.00
1115.0	0.00	70.00	1115.0	0.0	0.0	0.0	0.00	0.00	0.00	70.00

**Section 2 : Start Build 20.00**

MD ft	Incl deg	Azim deg	TVD ft	+N/-S ft	+E/-W ft	VS ft	DLS deg/100ft	Build deg/100ft	Turn deg/100ft	TFO deg
1125.0	2.00	70.00	1125.0	0.1	0.2	0.2	20.00	20.00	0.00	0.00
1150.0	7.00	70.00	1149.9	0.7	2.0	2.1	20.00	20.00	0.00	0.00
1175.0	12.00	70.00	1174.6	2.1	5.9	6.3	20.00	20.00	0.00	0.00
1194.9	15.99	70.00	1193.9	3.8	10.4	11.1	20.00	20.00	0.00	0.00
1200.0	17.00	70.00	1198.8	4.3	11.8	12.5	20.00	20.00	0.00	0.00
1225.0	22.00	70.00	1222.3	7.1	19.6	20.9	20.00	20.00	0.00	0.00
1250.0	27.00	70.00	1245.1	10.7	29.3	31.2	20.00	20.00	0.00	0.00
1275.0	32.00	70.00	1266.8	14.9	40.9	43.5	20.00	20.00	0.00	0.00
1300.0	37.00	70.00	1287.4	19.7	54.2	57.7	20.00	20.00	0.00	0.00
1325.0	42.00	70.00	1306.7	25.2	69.1	73.6	20.00	20.00	0.00	0.00
1350.0	47.00	70.00	1324.5	31.2	85.6	91.1	20.00	20.00	0.00	0.00
1375.0	52.00	70.00	1340.8	37.7	103.5	110.1	20.00	20.00	0.00	0.00

15-25-31834-0100

# Scientific Drilling International Planning Report

<b>Company:</b> Constellation Energy Partners <b>Field:</b> Montgomery County, KS <b>Site:</b> Section 3 - 34S - 14E <b>Well:</b> Kaminska 3-6 <b>Wellpath:</b> Original Wellpath	<b>Date:</b> 9/11/2008 <b>Co-ordinate(NE) Reference:</b> Well: Kaminska 3-6, True North <b>Vertical (TVD) Reference:</b> Kaminska 3-6 857.0 <b>Section (VS) Reference:</b> Well (0.00N,0.00E,70.00Azi) <b>Plan:</b> Plan #1	<b>Time:</b> 13:30:25 <b>Page:</b> 2
---	---	---

**Section 2 : Start Build 20.00**

MD ft	Incl deg	Azim deg	TVD ft	+N/-S ft	+E/-W ft	VS ft	DLS deg/100ft	Build deg/100ft	Turn deg/100ft	TFO deg
1400.0	57.00	70.00	1355.3	44.6	122.6	130.4	20.00	20.00	0.00	0.00
1425.0	62.00	70.00	1368.0	52.0	142.8	152.0	20.00	20.00	0.00	0.00
1450.0	67.00	70.00	1378.7	59.7	164.0	174.5	20.00	20.00	0.00	0.00
1475.0	72.00	70.00	1387.5	67.7	186.0	197.9	20.00	20.00	0.00	0.00
1500.0	77.00	70.00	1394.1	75.9	208.6	222.0	20.00	20.00	0.00	0.00
1525.0	82.00	70.00	1398.7	84.3	231.7	246.6	20.00	20.00	0.00	0.00
1550.0	87.00	70.00	1401.1	92.8	255.1	271.5	20.00	20.00	0.00	0.00
1566.8	90.36	70.00	1401.5	98.6	270.9	288.3	20.00	20.00	0.00	0.00
1567.5	90.50	70.00	1401.5	98.8	271.6	289.0	20.00	20.00	0.00	0.00

**Section 3 : Start Hold**

MD ft	Incl deg	Azim deg	TVD ft	+N/-S ft	+E/-W ft	VS ft	DLS deg/100ft	Build deg/100ft	Turn deg/100ft	TFO deg
1600.0	90.50	70.00	1401.2	109.9	302.1	321.5	0.00	0.00	0.00	0.00
1700.0	90.50	70.00	1400.3	144.1	396.0	421.5	0.00	0.00	0.00	0.00
1800.0	90.50	70.00	1399.5	178.3	490.0	521.5	0.00	0.00	0.00	0.00
1900.0	90.50	70.00	1398.6	212.6	584.0	621.5	0.00	0.00	0.00	0.00
2000.0	90.50	70.00	1397.7	246.8	677.9	721.5	0.00	0.00	0.00	0.00
2100.0	90.50	70.00	1396.8	281.0	771.9	821.4	0.00	0.00	0.00	0.00
2200.0	90.50	70.00	1396.0	315.2	865.9	921.4	0.00	0.00	0.00	0.00
2300.0	90.50	70.00	1395.1	349.4	959.8	1021.4	0.00	0.00	0.00	0.00
2400.0	90.50	70.00	1394.2	383.6	1053.8	1121.4	0.00	0.00	0.00	0.00
2500.0	90.50	70.00	1393.3	417.8	1147.8	1221.4	0.00	0.00	0.00	0.00
2600.0	90.50	70.00	1392.5	452.0	1241.7	1321.4	0.00	0.00	0.00	0.00
2700.0	90.50	70.00	1391.6	486.2	1335.7	1421.4	0.00	0.00	0.00	0.00
2800.0	90.50	70.00	1390.7	520.4	1429.7	1521.4	0.00	0.00	0.00	0.00
2900.0	90.50	70.00	1389.9	554.6	1523.6	1621.4	0.00	0.00	0.00	0.00
3000.0	90.50	70.00	1389.0	588.8	1617.6	1721.4	0.00	0.00	0.00	0.00
3100.0	90.50	70.00	1388.1	623.0	1711.6	1821.4	0.00	0.00	0.00	0.00
3200.0	90.50	70.00	1387.2	657.2	1805.5	1921.4	0.00	0.00	0.00	0.00
3300.0	90.50	70.00	1386.4	691.4	1899.5	2021.4	0.00	0.00	0.00	0.00
3400.0	90.50	70.00	1385.5	725.6	1993.5	2121.4	0.00	0.00	0.00	0.00
3500.0	90.50	70.00	1384.6	759.8	2087.4	2221.4	0.00	0.00	0.00	0.00
3600.0	90.50	70.00	1383.7	794.0	2181.4	2321.4	0.00	0.00	0.00	0.00
3700.0	90.50	70.00	1382.9	828.2	2275.4	2421.4	0.00	0.00	0.00	0.00
3778.6	90.50	70.00	1382.2	855.1	2349.2	2500.0	0.00	0.00	0.00	0.00

**Survey**

MD ft	Incl deg	Azim deg	TVD ft	+N/-S ft	+E/-W ft	VS ft	DLS deg/100ft	Build deg/100ft	Turn deg/100ft	Tool/Comment
1100.0	0.00	70.00	1100.0	0.0	0.0	0.0	0.00	0.00	0.00	
1115.0	0.00	70.00	1115.0	0.0	0.0	0.0	0.00	0.00	0.00	
1125.0	2.00	70.00	1125.0	0.1	0.2	0.2	20.00	20.00	0.00	
1150.0	7.00	70.00	1149.9	0.7	2.0	2.1	20.00	20.00	0.00	
1175.0	12.00	70.00	1174.6	2.1	5.9	6.3	20.00	20.00	0.00	
1194.9	15.99	70.00	1193.9	3.8	10.4	11.1	20.00	20.00	0.00	Weir Pitt
1200.0	17.00	70.00	1198.8	4.3	11.8	12.5	20.00	20.00	0.00	
1225.0	22.00	70.00	1222.3	7.1	19.6	20.9	20.00	20.00	0.00	
1250.0	27.00	70.00	1245.1	10.7	29.3	31.2	20.00	20.00	0.00	
1275.0	32.00	70.00	1266.8	14.9	40.9	43.5	20.00	20.00	0.00	
1300.0	37.00	70.00	1287.4	19.7	54.2	57.7	20.00	20.00	0.00	
1325.0	42.00	70.00	1306.7	25.2	69.1	73.6	20.00	20.00	0.00	
1350.0	47.00	70.00	1324.5	31.2	85.6	91.1	20.00	20.00	0.00	
1375.0	52.00	70.00	1340.8	37.7	103.5	110.1	20.00	20.00	0.00	
1400.0	57.00	70.00	1355.3	44.6	122.6	130.4	20.00	20.00	0.00	
1425.0	62.00	70.00	1368.0	52.0	142.8	152.0	20.00	20.00	0.00	
1450.0	67.00	70.00	1378.7	59.7	164.0	174.5	20.00	20.00	0.00	
1475.0	72.00	70.00	1387.5	67.7	186.0	197.9	20.00	20.00	0.00	
1500.0	77.00	70.00	1394.1	75.9	208.6	222.0	20.00	20.00	0.00	

RECEIVED  
KANSAS CORPORATION COMMISSION

OCT 21 2008

CONSERVATION DIVISION  
WICHITA, KS

15-125-31834-01-00

## Scientific Drilling International Planning Report

<b>Company:</b> Constellation Energy Partners	<b>Date:</b> 9/11/2008	<b>Time:</b> 13:30:25	<b>Page:</b> 3
<b>Field:</b> Montgomery County, KS	<b>Co-ordinate(NE) Reference:</b> Well: Kaminska 3-6, True North		
<b>Site:</b> Section 3 - 34S - 14E	<b>Vertical (TVD) Reference:</b> Kaminska 3-6 857.0		
<b>Well:</b> Kaminska 3-6	<b>Section (VS) Reference:</b> Well (0.00N,0.00E,70.00Azi)		
<b>Wellpath:</b> Original Wellpath	<b>Plan:</b> Plan #1		

**Survey**

MD ft	Incl deg	Azim deg	TVD ft	+N/-S ft	+E/-W ft	VS ft	DLS deg/100ft	Build deg/100ft	Turn deg/100ft	Tool/Comment
1525.0	82.00	70.00	1398.7	84.3	231.7	246.6	20.00	20.00	0.00	
1550.0	87.00	70.00	1401.1	92.8	255.1	271.5	20.00	20.00	0.00	
1566.8	90.36	70.00	1401.5	98.6	270.9	288.3	20.00	20.00	0.00	Rowe Coal
1567.5	90.50	70.00	1401.5	98.8	271.6	289.0	20.00	20.00	0.00	
1600.0	90.50	70.00	1401.2	109.9	302.1	321.5	0.00	0.00	0.00	
1700.0	90.50	70.00	1400.3	144.1	396.0	421.5	0.00	0.00	0.00	
1800.0	90.50	70.00	1399.5	178.3	490.0	521.5	0.00	0.00	0.00	
1900.0	90.50	70.00	1398.6	212.6	584.0	621.5	0.00	0.00	0.00	
2000.0	90.50	70.00	1397.7	246.8	677.9	721.5	0.00	0.00	0.00	
2100.0	90.50	70.00	1396.8	281.0	771.9	821.4	0.00	0.00	0.00	
2200.0	90.50	70.00	1396.0	315.2	865.9	921.4	0.00	0.00	0.00	
2300.0	90.50	70.00	1395.1	349.4	959.8	1021.4	0.00	0.00	0.00	
2400.0	90.50	70.00	1394.2	383.6	1053.8	1121.4	0.00	0.00	0.00	
2500.0	90.50	70.00	1393.3	417.8	1147.8	1221.4	0.00	0.00	0.00	
2600.0	90.50	70.00	1392.5	452.0	1241.7	1321.4	0.00	0.00	0.00	
2700.0	90.50	70.00	1391.6	486.2	1335.7	1421.4	0.00	0.00	0.00	
2800.0	90.50	70.00	1390.7	520.4	1429.7	1521.4	0.00	0.00	0.00	
2900.0	90.50	70.00	1389.9	554.6	1523.6	1621.4	0.00	0.00	0.00	
3000.0	90.50	70.00	1389.0	588.8	1617.6	1721.4	0.00	0.00	0.00	
3100.0	90.50	70.00	1388.1	623.0	1711.6	1821.4	0.00	0.00	0.00	
3200.0	90.50	70.00	1387.2	657.2	1805.5	1921.4	0.00	0.00	0.00	
3300.0	90.50	70.00	1386.4	691.4	1899.5	2021.4	0.00	0.00	0.00	
3400.0	90.50	70.00	1385.5	725.6	1993.5	2121.4	0.00	0.00	0.00	
3500.0	90.50	70.00	1384.6	759.8	2087.4	2221.4	0.00	0.00	0.00	
3600.0	90.50	70.00	1383.7	794.0	2181.4	2321.4	0.00	0.00	0.00	
3700.0	90.50	70.00	1382.9	828.2	2275.4	2421.4	0.00	0.00	0.00	
3778.6	90.50	70.00	1382.2	855.1	2349.2	2500.0	0.00	0.00	0.00	

**Formations**

MD ft	TVD ft	Formations	Lithology	Dip Angle deg	Dip Direction deg
965.0	965.0	Higginsville LS		-0.50	70.00
998.0	998.0	L Osage SH		-0.50	70.00
1031.0	1031.0	Mulky SH		-0.50	70.00
1194.9	1193.9	Weir Pitt		-0.50	70.00
1566.8	1401.5	Rowe Coal		-0.50	70.00

RECEIVED  
KANSAS CORPORATION COMMISSION

OCT 21 2008

CONSERVATION DIVISION  
WICHITA KS



RECEIVED

KANSAS CORPORATION COMMISSION



Scientific Drilling

OCT 21 2008  
CONSERVATION DIVISION  
WICHITA, KS

Constellation Energy Partners

Field: Montgomery County, KS  
Site: Section 3 - 34S - 14E  
Well: Kaminska 3-6  
Wellpath: Original Wellpath  
Plan: Plan #1



Azinuths to True North  
Magnetic North: 3.67°

Magnetic Field  
Strength: 51852nT  
Dip Angle: 64.84°  
Date: 9/11/2008  
Model: IGR2005

SECTION DETAILS

Sec	MD	Inc	Azi	TVD	+N/-S	+E/-W	DLeg	TFace	VSec	Target
1	0.0	0.00	70.00	0.0	0.0	0.0	0.00	0.00	0.0	
2	1115.0	0.00	70.00	1115.0	0.0	0.0	0.00	0.00	0.0	
3	1567.5	90.50	70.00	1401.5	98.8	271.6	20.00	70.00	289.0	
4	3778.6	90.50	70.00	1382.2	855.1	2349.2	0.00	0.00	2500.0	TGT Kaminska 3-6

WELLPATH DETAILS

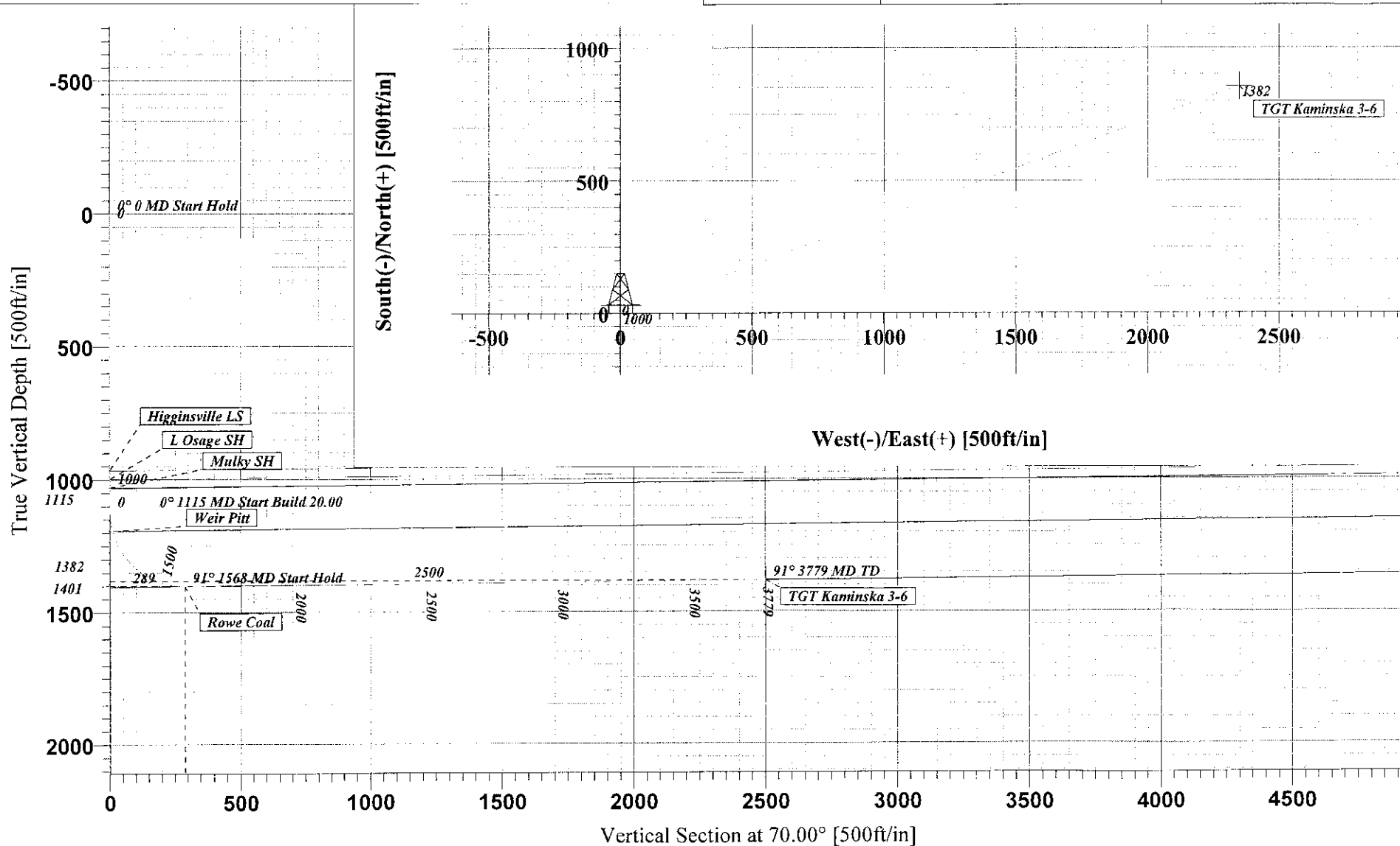
Well Path	Original Wellpath	Vertical Wellpath	Horizontal Wellpath
Kaminska 3-6	0.00	0.00	0.00
Original Wellpath	0.00	0.00	0.00
Vertical Wellpath	0.00	0.00	0.00
Horizontal Wellpath	0.00	0.00	0.00

TARGET DETAILS

Name	TVD	+N/-S	+E/-W	Shape
TGT Kaminska 3-6	1382.2	855.1	2349.2	Point

FORMATION TOP DETAILS

No	TVD(ft)	MD(ft)	Formation
1	965.0	965.0	Higginsville LS
2	998.0	998.0	L Osage SH
3	1031.0	1031.0	Mulky SH
4	1103.0	1103.0	Weir Pitt
5	1401.5	1566.8	Rowe Coal

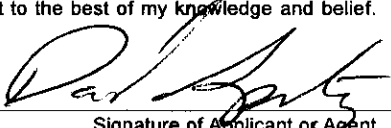


15-125-31834-01-00

**KANSAS CORPORATION COMMISSION  
OIL & GAS CONSERVATION DIVISION  
APPLICATION FOR SURFACE PIT**

Form CDP-1  
April 2004  
Form must be Typed

*Submit in Duplicate*

Operator Name: <b>CEP Mid-Continent LLC</b>		License Number: <b>34027</b>
Operator Address: <b>15 West Sixth Street, Suite 1400</b>		<b>Tulsa OK 74119</b>
Contact Person: <b>David Spitz, Engineering Manager</b>		Phone Number: <b>(918) 877-2912, ext. 309</b>
Lease Name & Well No.: <b>KAMINSKA #3-6</b>		Pit Location (QQQQ): _____ NE _____ SW _____ SW
Type of Pit: <input type="checkbox"/> Emergency Pit <input type="checkbox"/> Burn Pit <input type="checkbox"/> Settling Pit <input checked="" type="checkbox"/> Drilling Pit <input type="checkbox"/> Workover Pit <input type="checkbox"/> Haul-Off Pit <small>(If WP Supply API No. or Year Drilled)</small>	Pit is: <input checked="" type="checkbox"/> Proposed <input type="checkbox"/> Existing If Existing, date constructed: _____ Pit capacity: <b>1,710</b> (bbls)	Sec. <u>3</u> Twp. <u>34</u> R. <u>14</u> <input checked="" type="checkbox"/> East <input type="checkbox"/> West <u>830</u> Feet from <input type="checkbox"/> North <input checked="" type="checkbox"/> South Line of Section <u>1,240</u> Feet from <input type="checkbox"/> East <input checked="" type="checkbox"/> West Line of Section <b>Montgomery</b> County
Is the pit located in a Sensitive Ground Water Area? <input type="checkbox"/> Yes <input checked="" type="checkbox"/> No		Chloride concentration: _____ mg/l <small>(For Emergency Pits and Settling Pits only)</small>
Is the bottom below ground level? <input checked="" type="checkbox"/> Yes <input type="checkbox"/> No	Artificial Liner? <input type="checkbox"/> Yes <input checked="" type="checkbox"/> No	How is the pit lined if a plastic liner is not used? <u>NATIVE CLAY</u>
Pit dimensions (all but working pits): <u>30</u> Length (feet) <u>40</u> Width (feet) <input type="checkbox"/> N/A: Steel Pits Depth from ground level to deepest point: <u>8</u> (feet) <input type="checkbox"/> No Pit		
If the pit is lined give a brief description of the liner material, thickness and installation procedure. <b>N/A</b>		Describe procedures for periodic maintenance and determining liner integrity, including any special monitoring. <b>N/A</b>
Distance to nearest water well within one-mile of pit <u>N/A</u> feet    Depth of water well _____ feet		Depth to shallowest fresh water <u>11</u> feet. Source of information: <input type="checkbox"/> measured <input type="checkbox"/> well owner <input type="checkbox"/> electric log <input checked="" type="checkbox"/> KDWR
<b>Emergency, Settling and Burn Pits ONLY:</b> Producing Formation: _____ Number of producing wells on lease: _____ Barrels of fluid produced daily: _____ Does the slope from the tank battery allow all spilled fluids to flow into the pit? <input type="checkbox"/> Yes <input type="checkbox"/> No		<b>Drilling, Workover and Haul-Off Pits ONLY:</b> Type of material utilized in drilling/workover: <u>Fresh water</u> Number of working pits to be utilized: <u>1</u> Abandonment procedure: <u>Air dried and backfilled</u>  Drill pits must be closed within 365 days of spud date. <span style="float:right">RECEIVED KANSAS CORPORATION COMMISSION</span>
I hereby certify that the above statements are true and correct to the best of my knowledge and belief.  <u>9/30/08</u> Date		<b>OCT 21 2008</b> CONSERVATION DIVISION WICHITA, KS
Signature of Applicant or Agent 		

15-125-31834-01-00

<b>KCC OFFICE USE ONLY</b>		Steel Pit <input type="checkbox"/>	RFAC <input checked="" type="checkbox"/>	RFAS <input type="checkbox"/>
Date Received: <u>10/2/08</u>	Permit Number: _____	Permit Date: <u>11/19/08</u>	Lease Inspection: <input checked="" type="checkbox"/> Yes <input type="checkbox"/> No	

Mail to: KCC - Conservation Division, 130 S. Market - Room 2078, Wichita, Kansas 67202



Kathleen Sebelius, Governor  
Thomas E. Wright, Chairman  
Michael C. Moffet, Commissioner  
Joseph F. Harkins, Commissioner

November 19, 2008

CEP Mid Continent LLC  
15 West 6<sup>th</sup> St Ste 1400  
Tulsa, OK 74119-5415

RE: Drilling Pit Application  
Kaminska Lease Well No. 3-6  
SW/4 Sec. 03-34S-14E  
Montgomery County, Kansas

Dear Sir or Madam:

District staff has inspected the above referenced location and has determined that the reserve pit shall be constructed **without slots**, the bottom shall be flat and reasonably level, and the free fluids must be removed. The fluids are to be removed from the reserve pit as soon as practical after drilling operations have ceased.

**If production casing is set all completion fluids shall be removed from the working pits daily. NO completion fluids or non-exempt wastes shall be placed in the reserve pit.**

The fluids should be taken to an authorized disposal well. Please call the District Office at (620) 432-2300 when the fluids have been removed. Please file form CDP-5 (August 2004), Exploration and Production Waste Transfer, within 30 days of fluid removal. Conservation division forms are available through our office and on the KCC web site:  
[www.kcc.state.ks.us/conservation/forms](http://www.kcc.state.ks.us/conservation/forms).

**A copy of this letter should be posted in the doghouse along with the approved Intent to Drill.**

If you have any questions or concerns please feel free to contact the undersigned at the above address.

Sincerely,

A handwritten signature in black ink that reads "Kathy Haynes".

Kathy Haynes  
Environmental Protection and Remediation Department

cc: File