

TYPE

NOTICE OF INTENTION TO DRILL

C-1

TO BE FILED WITH THE STATE CORPORATION COMMISSION
PRIOR TO COMMENCEMENT OF WELL

API Number 15-105-20,007-00-00
(For office use only)

- Operator Milford Wolting & N-B Co., Inc., et al
Address Barnard, KS 67418
- Contractor Emphasis Oil Operations
Address Box 506, Russell, KS 67665
- Type of Equipment: Rotary Cable Tool _____
- Well to be Drilled for: Oil Gas
Disposal _____ Input _____ Other _____
- Depth of Deepest Fresh Water within 1 mile 130 ft.
- Depth of Municipal Water Well within 3 miles None ft.
- Depth to Protect all Fresh Water 200 ft.
- Amount of Surface Casing to be set 250 ft.
- Alternate No. 1 _____ No. 2

Starting Date December 27, 1977

County Lincoln

Sec 27 Twp 11 S Rge 6 **W**

Spot Location Approx. NE SW

Nearest Lease Line Approx. 400 ft.

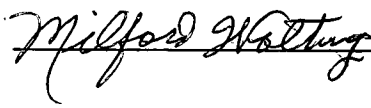
Lease Name Cole Estate

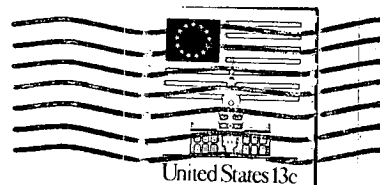
Well No. 1

Est. Total Depth 3850 ft.

REMARKS:

**OPERATOR STATES THAT HE WILL COMPLY WITH K. S. A. 55-128
MILFORD WOLTING & N-B COMPANY, INC. et al**

Signature of Operator Milford Wolting 



State Corporation Commission of Kansas
Conservation Division
245 North Water
Wichita, Kansas 67202

RECEIVED
STATE CORPORATION COMMISSION

DEC 02 1977
12-02-1977
CONSERVATION DIVISION
Wichita, Kansas

(IF PREFERRED, MAIL IN ENVELOPE)