

Give All Information Completely
Make Required Affidavit
Mail or Deliver Report to:
Conservation Division
State Corporation Commission
212 No. Market
Wichita, Kansas

WELL PLUGGING RECORD

Ellis County, Sec. 31 Twp. 11s Rge. 16 (W)
Location as "NE/CNW/SW" or footage from lines SW SW SW
Petroleum, Inc.

Lease Owner _____
Lease Name Planters State Bank (Washdown) Well No. B-1
Office Address Route 2, Great Bend, Kansas 67530

Character of Well (completed as Oil, Gas or Dry Hole) Dry Hole

Date well completed May 15, 1967

Application for plugging filed May 15, 1967

Application for plugging approved May 15, 1967

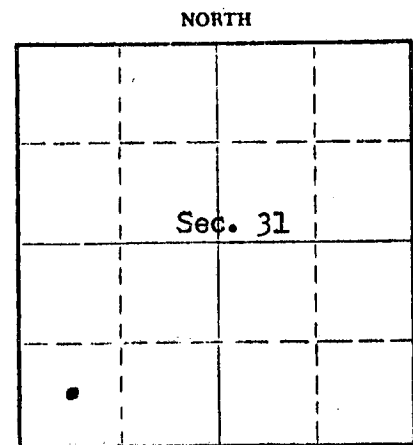
Plugging commenced May 15, 1967

Plugging completed May 15, 1967

Reason for abandonment of well or producing formation No producible zone.

If a producing well is abandoned, date of last production none 19

Was permission obtained from the Conservation Division or its agents before plugging was commenced? yes



Locate well correctly on above Section Plat

Name of Conservation Agent who supervised plugging of this well Leo Massey

Producing formation _____ Depth to top _____ Bottom _____ Total Depth of Well 3654' Feet

Show depth and thickness of all water, oil and gas formations.

OIL, GAS OR WATER RECORDS

CASING RECORD

FORMATION	CONTENT	FROM	TO	SIZE	PUT IN	PULLED OUT

Describe in detail the manner in which the well was plugged, indicating where the mud fluid was placed and the method or methods used in introducing it into the hole. If cement or other plugs were used, state the character of same and depth placed, from _____ feet to _____ feet for each plug set.

Mid to 540' followed by wooden plug, placed 20 sacks cement on top of plug. Mid to 180' followed by wooden plug, placed 20 sacks cement on top of plug. Mid to 40' followed by wooden plug, placed 8 sacks cement on top of plug to base of well cellar.

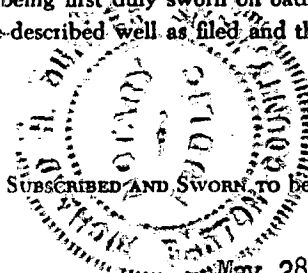
RECEIVED
STATE CORPORATION COMMISSION
5-22-1967
MAY 22 1967
CONSERVATION DIVISION
Wichita, Kansas

(If additional description is necessary, use BACK of this sheet)
Name of Plugging Contractor Garvey Drilling Company
Address Route 2, Great Bend, Kansas

STATE OF Kansas, COUNTY OF Barton, ss.
Monte Chadd (employee of owner) or (owner) of the above-described well, being first duly sworn on oath, says: That I have knowledge of the facts, statements, and matters herein contained and the log of the above-described well as filed and that the same are true and correct. So help me God. Monte Chadd, Dist. Prod. Supt.

(Signature) Monte Chadd
Route 2, Great Bend, Kansas 67530
(Address)

SUBSCRIBED AND SWORN to before me this 19 day of May, 1967



Richard H. Dumbler
Notary Public.

15-051-30641-00-01

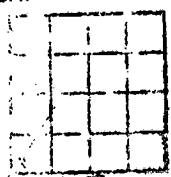
WELL LOG BUREAU - KANSAS GEOLOGICAL SOCIETY
503 East Murdock,
Wichita, Kansas

Company- GRANT-MILLER OIL CO.
Farm- Planters State No. 2
Block "A"

SEC. 31 T. 11 R. 16W
SW 1/4

Total Depth. 3650
Comm. 12-21-53 2-4-54
Shot or Treated.
Contractor. Graham-Moorman-Ranshart Drilling Co.
Issued. 2-13-54

County Ellis
KANSAS



CASING:
8 5/8" 195' cem. w/115 sx

Elevation 2089' RB

Production. Dry

Figures indicate Bottom of Formation.

shells	55
shale	625
sand	720
shale & red bed	1260
anhydrite	1305
shale & shells	1460
shale	1660
shale & shells	2004
shale	2120
shale & lime	3163
lime	3571
conglomerate	3650
Total Depth	

TOPS:	
Heebner	3258
Toronto	3278
Lansing	3303
Base Kansas City	3541
Conglomerate	3560

RECEIVED
STATE CORPORATION COMMISSION
5-22-1967
MAY 22 1967
CONSERVATION DIVISION
Wichita, Kansas