

CONFIDENTIAL

WELL COMPLETION FORM

WELL HISTORY - DESCRIPTION OF WELL & LEASE

Operator License # 5278

Name: EOG Resources, Inc.

Address 3817 NW Expressway, Suite 500

City/State/Zip Oklahoma City, Oklahoma 73112

Purchaser: DUKE CONOCO PHILLIPS MIDSTREAM

Operator Contact Person: MINDY BLACK

Phone (405) 246-3130 **KCC**

Contractor Name: ABERCROMBIE RID, INC JAN 31 2007

License: 30684 **CONFIDENTIAL**

Wellsite Geologist: _____

Designate Type of Completion

New Well Re-Entry Workover

Oil SWD SIOW Temp. Abd.

Gas ENHR SIGW

Dry Other (Core, WSW, Expl., Cathodic, etc.)

If Workover/Reentry: Old Well Info as follows:

Operator: _____

Well Name: _____

Original Comp. Date _____ Original Total Depth _____

Deepening Re-perf. Conv. to Enhr./SWD

Plug Back Plug Back Total Depth _____

Commingled Docket No. _____

Dual Completion Docket No. _____

Other (SWD or Enhr?) Docket No. _____

10/14/06 10/31/06 1/10/07

Spud Date or Date Reached TD Completion Date or Recompletion Date

API NO. 15- 175-22066-01-00

County SEWARD

E/2 - NE - SE - NE Sec. 1 Twp. 34 S. R. 33 E W

1650 Feet from SW (circle one) Line of Section

175 Feet from EW (circle one) Line of Section

Footages Calculated from Nearest Outside Section Corner:

(circle one) NE SE NW SW

Lease Name LANORA Well # 1 #1H

Field Name _____

Producing Formation CHESTER

Elevation: Ground 2814' Kelley Bushing 2826'

Total Depth 7601' **TVD** Plug Back Total Depth 7518'

Amount of Surface Pipe Set and Cemented at 1680' Feet

Multiple Stage Cementing Collar Used? Yes No

If yes, show depth set _____ Feet

If Alternate II completion, cement circulated from _____

feet depth to _____ w/ _____ sx cmt.

Drilling Fluid Management Plan PA 12-21-07
(Data must be collected from the Reserve Pit) NH 9-16-08

Chloride content 4000 ppm Fluid volume 1000 bbls

Dewatering method used EVAPORATION

Location of fluid disposal if hauled offsite: _____

Operator Name _____

Lease Name _____ License No. _____

Quarter _____ Sec. _____ Twp. _____ S. R. _____ E W

County _____ Docket No. _____

INSTRUCTIONS: An original and two copies of this form shall be filed with the Kansas Corporation Commission, 130 S. Market - Room 2078, Wichita, Kansas 67202, within 120 days of the spud date, recompletion, workover or conversion of a well. Rule 82-3-130, 82-3-106 and 82-3-107 apply. Information on side two of this form will be held confidential for a period of 12 months if requested in writing and submitted with the form (see rule 82-3-107 for confidentiality in excess of 12 months). One copy of all wireline logs and geologist well report shall be attached with this form. ALL CEMENTING TICKETS MUST BE ATTACHED. Submit CP-4 form with all plugged wells. Submit CP-111 form with all temporarily abandoned wells.

All requirements of the statutes, rules and regulations promulgated to regulate the oil and gas industry have been fully complied with and the statements herein are complete and correct to the best of my knowledge.

Signature Mindy Black
Title OPERATIONS ASSISTANT Date 2-1-07

Subscribed and sworn to before me this 1ST day of FEBRUARY

20 07.
Notary Public Heather Nealson
Heather Nealson
Cleveland County
Notary Public in and for
State of Oklahoma

Date Commission Expires 4-26-08 Commission # 04003796 Expires 4/26/08

KCC Office Use ONLY
 Letter of Confidentiality Attached
If Denied, Yes Date: _____
 Wireline Log Received
 Geologist Report Received
 UIC Distribution
RECEIVED
KANSAS CORPORATION COMMISSION
FEB 02 2007

Operator Name EOG RESOURCES, INC.

Lease Name IANORA

Well # 1 #1H

Sec. 1 Twp. 34 S.R. 33 East West

County SEWARD

INSTRUCTIONS: Show important tops and base of formations penetrated. Detail all cores. Report all drill stem tests giving interval tested, time tool open and closed, flowing and shut-in pressures, whether shut-in pressure reached static level, hydrostatic pressures, bottom hole temperature, fluid recovery, and flow rates if gas to surface during test. Attach extra sheet if more space is needed. Attach copy of all Electric Wireline Logs surveyed. Attach final geological well site report.

Drill Stem Tests Taken (Attach Additional Sheets.) Yes No

Samples Sent to Geological Survey Yes No

Cores Taken Yes No

Electric Log Run (Submit Copy.) Yes No

List All E.Logs Run:
NONE

Log Formation (Top), Depth and Datums Sample

Name Top Datum

SEE ATTACHED SHEET

CASING RECORD New Used
Report all strings set-conductor, surface, intermediate, production, etc.

Purpose of String	Size Hole Drilled	Size Casing Set (In O.D.)	Weight Lbs./Ft.	Setting Depth	Type of Cement	# Sacks Used	Type and Percent Additives
SURFACE	12 1/4	9 5/8"	36#	1680'	MIDCON&PP	450	SEE OMT TIX
INTERMEDIATE	8 3/4	7"	23#	6385'	50/50POZ&G	155	SEE OMT TIX
PRODUCTION	6 1/4	4 1/2	11.6#	7601'	ACID SOL	120	SEE OMT TIX

ADDITIONAL CEMENTING/SQUEEZE RECORD

Purpose	Depth Top Bottom	Type of Cement	#Sacks Used	Type and Percent Additives
Perforate				
Protect Casing				
Plug Back TD				
Plug Off Zone				

Shots Per Foot	PERFORATION RECORD - Bridge Plugs Set/Type Specify Footage of Each Interval Perforated	Acid, Fracture, Shot, Cement Squeeze Record (Amount and Kind of Material Used)	Depth
PEAK ISOPORT	6469'-7417'	105378GAL 15%HCL, 289002GAL 2% KCl	6469-7417
		SLICKWATER, 26780# OTTAWA SD.	

TUBING RECORD Size 2 3/8 Set At 6063' Packer At _____ Liner Run Yes No

Date of First, Resumed Production, SWD or Enhr. 1/13/06 Producing Method Flowing Pumping Gas Lift Other (Explain)

Estimated Production Per 24 Hours	Oil Bbls.	Gas Mcf	Water Bbls.	Gas-Oil Ratio	Gravity
0	66	50	---	---	.6636

Disposition of Gas: Vented Sold Used on Lease Open Hole Perforation Dually Comp. Commingled _____

(If vented, submit ACO-18.) Other (Specify) _____

ACO-1		
Well Name : Lanora 1 #1 H		
FORMATION	TOP	DATUM
base of heebner	4300	-1474
lansing	4450	-1624
marmaton	5150	-2324
cherokee	5300	-2474
atoka	5608	-2782
morrow shale	5714	-2888
lower morrow	5937	-3111
chester	6205	-3379

KCC
 JAN 31 2007
CONFIDENTIAL

RECEIVED
 KANSAS CORPORATION COMMISSION
 FEB 02 2007
 CONSERVATION DIVISION
 WICHITA, KS

HALLIBURTON

Cementing Job Summary

The Road to Excellence Starts with Safety

Sold To #: 302122	Ship To #: 2522194	Quote #:	Sales Order #: 4689075
Customer: EOG RESOURCES INC		Customer Rep: HEISKELL, PRESTON	
Well Name: Lanora	Well #: 1#1H	API/UWI #:	KCC
Field:	City (SAP): UNKNOWN	County/Parish: Seward	State: Kansas
Legal Description: Section 1 Township 34S Range 33W			
Contractor: ABERCROMBIE	Rig/Platform Name/Num: 5		
Job Purpose: Cement Surface Casing			
Well Type: Development Well	Job Type: Cement Surface Casing		
Sales Person: BLAKEY, JOSEPH	Srv Supervisor: MCINTYRE, BRIAN	MBU ID Emp #: 106009	

JAN 31 2007
CONFIDENTIAL

Job Personnel

HES Emp Name	Exp Hrs	Emp #	HES Emp Name	Exp Hrs	Emp #	HES Emp Name	Exp Hrs	Emp #
ARCHULETA, MIGUEL A	10.0	226381	CHAVEZ, ERIK Adrain	9.0	324693	MCINTYRE, BRIAN C	9.0	106009
TORRES, CLEMENTE	10.0	344233						

Equipment

HES Unit #	Distance-1 way	HES Unit #	Distance-1 way	HES Unit #	Distance-1 way	HES Unit #	Distance-1 way
	50 mile	10244148	50 mile	10286731	50 mile	10415642	50 mile
54029	50 mile	75819	50 mile				

Job Hours

Date	On Location Hours	Operating Hours	Date	On Location Hours	Operating Hours	Date	On Location Hours	Operating Hours
TOTAL								

Total is the sum of each column separately

Job

Job Times

Formation Name	Formation Depth (MD)	Top	Bottom	Called Out	Date	Time	Time Zone
				On Location	15 - Oct - 2006	13:30	CST
Form Type			BHST	Job Started	15 - Oct - 2006	17:00	CST
Job depth MD	1780. ft		Job Depth TVD	Job Started	16 - Oct - 2006	00:02	CST
Water Depth			Wk Ht Above Floor	Job Completed	16 - Oct - 2006	01:30	CST
Perforation Depth (MD)	From		To	Departed Loc	16 - Oct - 2006	02:30	CST

Well Data

Description	New / Used	Max pressure psig	Size in	ID in	Weight lbm/ft	Thread	Grade	Top MD ft	Bottom MD ft	Top TVD ft	Bottom TVD ft
Surface Open Hole				12.25					1680.		
Surface Casing	New		9.625	8.921	36.				1679.		

Sales/Rental/3rd Party (HES)

Description	Qty	Qty uom	Depth	Supplier
SHOE,CSG,TIGER TOOTH,9-5/8 8RD	1	EA		
CLR,FLT,TROPHY SEAL, 9-5/8 8RD	1	EA		
AUTOFILL KIT,TROPHY SEAL	1	EA		
COLLAR-STOP-9 5/8"-W/DOGS	1	EA		
KIT,HALL WELD-A	1	EA		
BASKET - CEMENT - 9-5/8 CSG X 12-1/4	1	EA		
PLUG,CMTG, TOP,9 5/8,HWE,8.16 MIN/9.06 MA	1	EA		

RECEIVED
KANSAS CORPORATION COMMISSION
FEB 02 2007
CONSERVATION DIVISION
WICHITA, KS

Tools and Accessories

Type	Size	Qty	Make	Depth	Type	Size	Qty	Make	Depth	Type	Size	Qty	Make
Guide Shoe					Packer					Top Plug			
Float Shoe					Bridge Plug					Bottom Plug			
Float Collar					Retainer					SSR plug set			
Insert Float										Plug Containe			

RECEIVED
KANSAS CORPORATION COMMISSION

HALLIBURTON

Cementing Job Summary

Miscellaneous Materials												
Gelling Agt		Conc		Surfactant		Conc		Acid Type		Qty	Conc	%
Treatment Fld		Conc		Inhibitor		Conc		Sand Type		Size	Qty	
Fluid Data												
Stage/Plug #: 1												
Fluid #	Stage Type	Fluid Name			Qty	Qty uom	Mixing Density lbm/gal	Yield ft ³ /sk	Mix Fluid Gal/sk	Rate bbl/min	Total Mix Fluid Gal/sk	
1	Water Spacer				20.00	bbl	8.33	.0	.0	.0		
2	Lead Cement	MIDCON-2 CEMENT PREMIUM PLUS - SBM (15079)			230.0	sacks	11.4	2.93	18.03		18.03	
18.027 Gal		FRESH WATER										
2 %		CALCIUM CHLORIDE - HI TEST PELLET (100005053)										
0.25 lbm		POLY-E-FLAKE (101216940)										
0.1 %		WG-17, 50 LB SK (100003623)										
3	Tail Cement	CMT - PREMIUM PLUS CEMENT (100012205)			220.0	sacks	14.8	1.34	6.32		6.32	
6.324 Gal		FRESH WATER										
2 %		CALCIUM CHLORIDE - HI TEST PELLET (100005053)										
0.25 lbm		POLY-E-FLAKE (101216940)										
4	Displacement				0.00	bbl	8.33	.0	.0	.0		
Calculated Values			Pressures			Volumes						
Displacement		Shut In: Instant		Lost Returns		Cement Slurry		Pad				
Top Of Cement		5 Min		Cement Returns		Actual Displacement		Treatment				
Frac Gradient		15 Min		Spacers		Load and Breakdown		Total Job				
Rates												
Circulating		Mixing		Displacement				Avg. Job				
Cement Left In Pipe		Amount	44 ft	Reason	Shoe Joint							
Frac Ring # 1 @	ID	Frac ring # 2 @	ID	Frac Ring # 3 @	ID	Frac Ring # 4 @	ID					
The Information Stated Herein Is Correct				Customer Representative Signature <i>Preston Hershey</i>								

KCC
JAN 31 2007
CONFIDENTIAL

RECEIVED
KANSAS CORPORATION COMMISSION
FEB 02 2007

CONSERVATION DIVISION
WICHITA, KS

HALLIBURTON

Cementing Job Log

The Road to Excellence Starts with Safety

Sold To #: 302122	Ship To #: 2522194	Quote #:	Sales Order #: 4689075
Customer: EOG RESOURCES INC		Customer Rep: HEISKELL, PRESTON	
Well Name: Lanora	Well #: 1#1H	API/UWI #:	
Field:	City (SAP): UNKNOWN	County/Parish: Seward	State: Kansas
Legal Description: Section 1 Township 34S Range 33W			
Lat: N 0 deg. OR N 0 deg. 0 min. 0 secs.		Long: E 0 deg. OR E 0 deg. 0 min. 0 secs.	
Contractor: ABERCROMBIE	Rig/Platform Name/Num: 5		
Job Purpose: Cement Surface Casing			Ticket Amount:
Well Type: Development Well		Job Type: Cement Surface Casing	
Sales Person: BLAKEY, JOSEPH	Srvc Supervisor: MCINTYRE, BRIAN	MBU ID Emp #: 106009	

Activity Description	Date/Time	Cht #	Rate bbl/min	Volume bbl		Pressure psig		Comments
				Stage	Total	Tubing	Casing	
Call Out	10/15/2006 13:30							
Safety Meeting - Service Center or other Site	10/15/2006 14:30							
Arrive At Loc	10/15/2006 17:00							RIG MAKING WIPPER TRIP
Assessment Of Location Safety Meeting	10/15/2006 17:15							LOCATION SANDY TAKE TIME
Safety Meeting - Pre Rig-Up	10/15/2006 17:25							
Rig-Up Equipment	10/15/2006 17:30							
Rig-Up Completed	10/15/2006 18:30							
Start Out Of Hole	10/15/2006 18:35							WITH DRILL PIPE
Other	10/15/2006 21:00							START 9 5/8 CASING AND FLOAT EQUIPMENT
Casing on Bottom	10/15/2006 23:15							
Circulate Well	10/15/2006 23:30							WITH RIG PUMP
Other	10/15/2006 23:50							THROUGH CIRCULATION
Safety Meeting - Pre Job	10/15/2006 23:55							
Test Lines	10/16/2006 00:02							TEST LINES 3000 SPI
Pump Lead Cement	10/16/2006 00:09		6		120		160.0	230 SKS MIDCON-2 PREMIUM PLUS @ 11.4#GAL
Pump Tail Cement	10/16/2006 00:41		6		53		185.0	220 SKS PREMIUM PLUS @ 14.8#GAL

KCC
JAN 31 2007
CONFIDENTIAL

RECEIVED
KANSAS CORPORATION COMMISSION
FEB 02 2007
CONSERVATION DIVISION
WICHITA, KS

Sold To #: 302122

Ship To #: 2522194

Quote #:

Sales Order #:

4689075

SUMMIT Version: 7.10.386

Monday, October 16, 2006 01:41:00

HALLIBURTON

Cementing Job Log

Activity Description	Date/Time	Cht #	Rate bbl/min	Volume bbl		Pressure psig		Comments
				Stage	Total	Tubing	Casing	
Drop Top Plug	10/16/2006 00:46							9 5/8 5 WIPER HWE
Pump Displacement	10/16/2006 00:47		6		126		110.0	WITH PUMP TRUCK
Displ Reached Cmnt	10/16/2006 01:03		6		126		140.0	91 BBLS GONE CIRCULATE CEMENT-- ----35 BBLS TO PIT.....
Other	10/16/2006 01:06		2		86		250.0	SLOW RATE 2 BBLS MINUTE----LAST 40 BBLS-----STAGE LAST 20 BBLS PUMP 5 BBLS SHUT DOWN 5 MINUTES--LAST 20 BBLS
Check Floats	10/16/2006 01:29							FLOAT HELD
End Job	10/16/2006 01:30							KCC
Rig-Down Equipment	10/16/2006 01:40							JAN 31 2007
Rig-Down Completed	10/16/2006 02:30							CONFIDENTIAL
Safety Meeting - Departing Location	10/16/2006 02:45							
Bump Plug	10/16/2006 10:28		2		126		865.0	350 PSI-850 PSI FINAL LANDING PRESSURE
Safety Meeting - Pre Rig-Down	10/16/2006 10:35							

RECEIVED
KANSAS CORPORATION COMMISSION

FEB 02 2007

CONSERVATION DIVISION
WICHITA, KS

Sold To # : 302122

Ship To # : 2522194

Quote # :

Sales Order # : 4689075

SUMMIT Version: 7.10.386

Monday, October 16, 2006 01:41:00

HALLIBURTON

Cementing Job Summary

The Road to Excellence Starts with Safety

Sold To #: 302122	Ship To #: 2522194	Quote #:	Sales Order #: 4707012
Customer: EOG RESOURCES INC		Customer Rep: Purser, Jim	
Well Name: Lanora	Well #: 1#1H	API/UWI #:	
Field:	City (SAP): UNKNOWN	County/Parish: Seward	State: Kansas KCC
Legal Description: Section 1 Township 34S Range 33W			
Contractor: ABERCROMBIE		Rig/Platform Name/Num: 5	
Job Purpose: Cement Intermediate Casing			
Well Type: Development Well		Job Type: Cement Intermediate Casing	
Sales Person: BLAKEY, JOSEPH		Srvc Supervisor: WILTSHIRE, MERSHEK	MBU ID Emp #: 195811

JAN 31 2007
CONFIDENTIAL

Job Personnel

HES Emp Name	Exp Hrs	Emp #	HES Emp Name	Exp Hrs	Emp #	HES Emp Name	Exp Hrs	Emp #
GRAVES, JEREMY	5.5	399155	LOPEZ, CARLOS	5.5	321975	OLDS, ROYCE E	5.5	306196
WILTSHIRE, MERSHEK T	5.5	195811						

Equipment

HES Unit #	Distance-1 way	HES Unit #	Distance-1 way	HES Unit #	Distance-1 way	HES Unit #	Distance-1 way
10251403C	50 mile	10547690	50 mile	54225	50 mile	6611U	50 mile

Job Hours

Date	On Location Hours	Operating Hours	Date	On Location Hours	Operating Hours	Date	On Location Hours	Operating Hours
TOTAL			Total is the sum of each column separately					

Job

Job Times

Formation Name	Formation Depth (MD)	Top	Bottom	Called Out	Date	Time	Time Zone
Form Type	Job depth MD	6318. ft	Job Depth TVD	6318. ft	Job Started	25 - Oct - 2006	00:00 CST
Water Depth	Wk Ht Above Floor	5. ft	Job Completed	25 - Oct - 2006	00:00	CST	
Perforation Depth (MD)	From	To	Departed Loc				

Well Data

Description	New / Used	Max pressure psig	Size in	ID in	Weight lbm/ft	Thread	Grade	Top MD ft	Bottom MD ft	Top TVD ft	Bottom TVD ft
Intermediate Casing(Horizontal Section)	Used		7.	6.366	23.		N-80	5407.	6318.	5407.	6387.
Surface Casing	Used		9.625	8.921	36.			1700.	1700.	1700.	5980.
Intermediate Open Hole				8.75							
Intermediate Casing(Vertical Section)	Used		7.	6.366	23.		N-80	5407.			

Sales/Rental/3rd Party (HES)

Description	Qty	Qty uom	Depth	Supplier
SHOE,FLT,7 8RD,4-1/4SSII,HPUJ	1	EA		
CLR,FLT,7 8RD 17-26PPF,2-3/4SSII	1	EA		
KIT,HALL WELD-A	2	EA		
PLUG,CMTG,TOP,7,HWE,5.66 MIN/6.54 MAX CS	1	EA		
PLUG,CMTG,BOT,7,HWE,5.66 MIN/6.54 MAX CS	1	EA		

RECEIVED
KANSAS CORPORATION COMMISSION

FEB 02 2007

CONSERVATION DIVISION
WICHITA, KS

Tools and Accessories

Type	Size	Qty	Make	Depth	Type	Size	Qty	Make	Depth	Type	Size	Qty	Make
Guide Shoe					Packer					Top Plug			
Float Shoe					Bridge Plug					Bottom Plug			
Float Collar					Retainer					SSR plug set			
Insert Float										Plug Container			
Stage Tool										Centralizers			

KCC

JAN 31 2007

CONFIDENTIAL

Miscellaneous Materials

Gelling Agt	Conc	Surfactant	Conc	Acid Type	Qty	Conc	%
Treatment Fld	Conc	Inhibitor	Conc	Sand Type	Size	Qty	

Fluid Data

Stage/Plug #: 1

Fluid #	Stage Type	Fluid Name	Qty	Qty uom	Mixing Density lbm/gal	Yield ft3/sk	Mix Fluid Gal/sk	Rate bbl/min	Total Mix Fluid Gal/sk
1	MUD FLUSH	MUD FLUSH - ZI - SBM (13383)	25.00	bbl	8.4	.0	.0	.0	
2	Lead Cement	POZ PREMIUM 50/50 - SBM (12302)	95.0	sacks	13.9	1.47	6.26		6.26
	6.255 Gal	FRESH WATER							
	10 %	CAL-SEAL 60, BULK (100064022)							
	0.6 %	HALAD(R)-344, 50 LB (100003670)							
	0.15 %	WG-17, 50 LB SK (100003623)							
	0.5 %	D-AIR 3000 (101007446)							
	5 lbm	GILSONITE, BULK (100003700)							
	0.2 %	CFR-3, W/O DEFOAMER, 50 LB SK (100003653)							
3	Tail Cement	CMT - PREMIUM - CLASS G, 94 LB SK (100003685)	60.0	sacks	15.8	1.16	5.01		5.01
	0.2 %	CFR-3, W/O DEFOAMER, 50 LB SK (100003653)							
	0.6 %	HALAD(R)-344, 50 LB (100003670)							
	5.014 Gal	FRESH WATER							
4	Displacement		0.00	bbl	8.33	.0	.0	.0	

Calculated Values

Pressures

Volumes

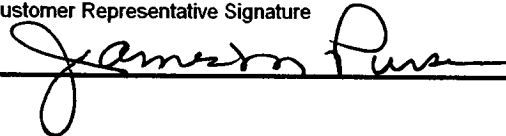
Displacement	Shut In: Instant	Lost Returns	Cement Slurry	Pad
Top Of Cement	5 Min	Cement Returns	Actual Displacement	Treatment
Frac Gradient	15 Min	Spacers	Load and Breakdown	Total Job

Rates

Circulating	Mixing	Displacement	Avg. Job
Cement Left In Pipe	Amount	44 ft	Reason
Frac Ring # 1 @	ID	Frac ring # 2 @	ID
Frac Ring # 3 @	ID	Frac Ring # 4 @	ID

The Information Stated Herein Is Correct

Customer Representative Signature



RECEIVED
KANSAS CORPORATION COMMISSION

FEB 02 2007

CONSERVATION DIVISION
WICHITA, KS

HALLIBURTON

Cementing Job Log

The Road to Excellence Starts with Safety

Sold To #: 302122	Ship To #: 2522194	Quote #:	Sales Order #: 4707012
Customer: EOG RESOURCES INC		Customer Rep: Purser, Jim	
Well Name: Lanora	Well #: 1#1H	API/UWI #:	
Field:	City (SAP): UNKNOWN	County/Parish: Seward	State: Kansas
Legal Description: Section 1 Township 34S Range 33W			
Lat: N 0 deg. OR N 0 deg. 0 min. 0 secs.		Long: E 0 deg. OR E 0 deg. 0 min. 0 secs.	
Contractor: ABERCROMBIE	Rig/Platform Name/Num: 5		
Job Purpose: Cement Intermediate Casing		Ticket Amount:	
Well Type: Development Well	Job Type: Cement Intermediate Casing		
Sales Person: BLAKEY, JOSEPH	Srvc Supervisor: WILTSHIRE, MERSHEK	MBU ID Emp #: 195811	

Activity Description	Date/Time	Cht #	Rate bbl/min	Volume bbl		Pressure psig		Comments
				Stage	Total	Tubing	Casing	
Call Out	10/25/2006 12:30							KCC JAN 31 2007 CONFIDENTIAL
Arrive At Loc	10/25/2006 15:00							
Pre-Job Safety Meeting	10/25/2006 15:30							
Start Job	10/25/2006 18:14							
Test Lines	10/25/2006 18:14						3500.0	
Pump Spacer 1	10/25/2006 18:18		5		25		500.0	MUDFLUSH
Pump Lead Cement	10/25/2006 18:24		5		25		500.0	95 SKS 50/50 POZ PP @ 13.9#
Pump Tail Cement	10/25/2006 18:30		3		12		420.0	60 SKS PREM PLUS G @ 15.8#
Drop Top Plug	10/25/2006 18:38		3		37		280.0	END CEMENT
Clean Lines	10/25/2006 18:41							
Pump Displacement	10/25/2006 18:47		6		249		500.0	DRILLING MUD
Other	10/25/2006 19:22						600.0	PRESSURE BEFORE LANDING PLUG
Other	10/25/2006 19:31		2.5		239		800.0	SLOW RATE
Bump Plug	10/25/2006 19:33		2.5		249		1700.0	FLOAT HELD
End Job	10/25/2006 19:36						0	

RECEIVED
KANSAS CORPORATION COMMISSION

FEB 02 2007

CONSERVATION DIVISION
WICHITA, KS
Sales Order #:

Sold To #: 7.10.386

Ship To #:

Quote #:

SUMMIT Version:

Wednesday, October 25, 2006 07:51:00

HALLIBURTON

Cementing Job Summary

The Road to Excellence Starts with Safety

Sold To #: 302122	Ship To #: 2522194	Quote #:	Sales Order #: 4721385
Customer: EOG RESOURCES INC		Customer Rep: Purser, Jim	
Well Name: Lanora	Well #: 1#1H	API/UWI #:	
Field:	City (SAP): UNKNOWN	County/Parish: Seward	State: Kansas
Legal Description: Section 1 Township 34S Range 33W			
Contractor: ABERCROMBIE		Rig/Platform Name/Num: 5	
Job Purpose: Cement Production Casing			
Well Type: Development Well		Job Type: Cement Production Casing	
Sales Person: BLAKEY, JOSEPH		Srvc Supervisor: HUMPHRIES, GARRY	MBU ID Emp #: 106085

KCC
JAN 31 2007
CONFIDENTIAL

Job Personnel

HES Emp Name	Exp Hrs	Emp #	HES Emp Name	Exp Hrs	Emp #	HES Emp Name	Exp Hrs	Emp #
ARCHULETA, MIGUEL A	7.5	226381	DEETZ, DONALD E	6.0	389855	HUMPHRIES, GARRY Dwayne	6.0	106085

Equipment

HES Unit #	Distance-1 way	HES Unit #	Distance-1 way	HES Unit #	Distance-1 way	HES Unit #	Distance-1 way
10010921C	50 mile	10547695	50 mile	54219	50 mile	54225	50 mile
6611U	50 mile						

Job Hours

Date	On Location Hours	Operating Hours	Date	On Location Hours	Operating Hours	Date	On Location Hours	Operating Hours

TOTAL Total is the sum of each column separately

Job

Job Times

Formation Name	Formation Depth (MD) Top	Bottom	Called Out	Date	Time	Time Zone
			On Location	31 - Oct - 2006	09:00	CST
Form Type	BHST		Job Started	31 - Oct - 2006	12:00	CST
Job depth MD	7601. ft	Job Depth TVD	Job Completed	31 - Oct - 2006	13:00	CST
Water Depth		Wk Ht Above Floor	Departed Loc	31 - Oct - 2006	15:00	CST
Perforation Depth (MD) From		To				

Well Data

Description	New / Used	Max pressure psig	Size in	ID in	Weight lbm/ft	Thread	Grade	Top MD ft	Bottom MD ft	Top TVD ft	Bottom TVD ft
Intermediate Casing(Horizontal Section)	Used		7.	6.366	23.		N-80	5407.	6385.	5407.	5980.
Production Open Hole				6.125				6307.	7601.	6307.	5980.
Production Casing	Used		4.5	4.	11.6		N-80	.	7601.	.	5980.
Intermediate Casing(Vertical Section)	Used		7.	6.366	23.		N-80	.	5407.		

Sales/Rental/3rd Party (HES)

Description	Qty	Qty uom	Depth	Supplier
SHOE-FLT- 4 1/2 8RD - HI-PORT	1	EA		
CLR,FLT,4-1/2 8RD,9.5-13.5PPF,2-3/4	1	EA		

RECEIVED
 KANSAS CORPORATION COMMISSION

FEB 02 2007

CONSERVATION DIVISION
 WICHITA, KS

HALLIBURTON

Cementing Job Summary

Description	Qty	Qty uom	Depth	Supplier
KIT,HALL WELD-A	2	EA		
PLUG,CMTG,TOP,4 1/2,HWE,3.65 MIN/4.14 MA	1	EA		
PLUG,CMTG,BOT,4 1/2,HWE,3.65 MIN/4.14 MA	2	EA		

Tools and Accessories

Type	Size	Qty	Make	Depth	Type	Size	Qty	Make	Depth	Type	Size	Qty	Make
Guide Shoe					Packer					Top Plug			
Float Shoe					Bridge Plug					Bottom Plug			
Float Collar					Retainer					SSR plug set			
Insert Float										Plug Container			
Stage Tool										Centralizers			

Miscellaneous Materials

Gelling Agt	Conc	Surfactant	Conc	Acid Type	Qty	Conc	%
Treatment Fld	Conc	Inhibitor	Conc	Sand Type	Size	Qty	%

Fluid Data

Stage/Plug #: 1										
Fluid #	Stage Type	Fluid Name	Qty	Qty uom	Mixing Density lbm/gal	Yield ft ³ /sk	Mix Fluid Gal/sk	Rate bbl/min	Total Mix Fluid Gal/sk	
1	MUD FLUSH	MUD FLUSH - ZI - SBM (13383)	50.00	bbl	8.4	.0	.0	.0		
	990 gal/Mgal	FRESH WATER								
	1 gal/bbl	FDP-C694L-03, 5 GAL PAIL (101424388)								
2	Plug Rat and Mouse Holes	ACID SOLUBLE CEMENT, CMT - SBM (420899)	25.0	sacks	15.	2.5	10.32		10.32	
	10.316 Gal	FRESH WATER								
	0.7 %	ECONOLITE (100001580)								
	0.6 %	HALAD(R)-344, 50 LB (100003670)								
	5 lbm	GILSONITE, BULK (100003700)								
	0.2 %	HR-25, 50 LB BAG (100003756)								
	0.2 %	SCR-100 (100003749)								
3	Acid Soluable Cement	ACID SOLUBLE CEMENT, CMT - SBM (420899)	120.0	sacks	15.	2.5	10.32		10.32	
	10.316 Gal	FRESH WATER								
	0.7 %	ECONOLITE (100001580)								
	0.6 %	HALAD(R)-344, 50 LB (100003670)								
	5 lbm	GILSONITE, BULK (100003700)								
	0.2 %	HR-25, 50 LB BAG (100003756)								
	0.2 %	SCR-100 (100003749)								
4	Displacement with 1# sugar/bbl		50.00	bbl	8.33	.0	.0	.0		
	1 lbm/bbl	SUGAR, 25 LB BAG (100008028)								
5	Displacement		0.00	bbl	8.33	.0	.0	.0		

Calculated Values		Pressures		Volumes			
Displacement		Shut In: Instant		Lost Returns		Cement Slurry	
Top Of Cement		5 Min		Cement Returns		Actual Displacement	
Frac Gradient		15 Min		Spacers		Load and Breakdown	
						Total Job	

Rates

Circulating		Mixing		Displacement		Avg. Job	
Cement Left In Pipe	Amount	40 ft	Reason	Shoe Joint			
Frac Ring # 1 @	ID	Frac ring # 2 @	ID	Frac Ring # 3 @	ID	Frac Ring # 4 @	ID

The Information Stated Herein Is Correct

Customer Representative Signature

RECEIVED
KANSAS CORPORATION COMMISSION

FEB 02 2007

CONSERVATION DIVISION
WICHITA, KS

HALLIBURTON

Cementing Job Log

The Road to Excellence Starts with Safety

Sold To #: 302122	Ship To #: 2522194	Quote #:	Sales Order #: 4721385
Customer: EOG RESOURCES INC		Customer Rep: Purser, Jim	
Well Name: Lanora	Well #: 1#1H	API/UWI #:	
Field:	City (SAP): UNKNOWN	County/Parish: Seward	State: Kansas
Legal Description: Section 1 Township 34S Range 33W			
Lat: N 0 deg. OR N 0 deg. 0 min. 0 secs.		Long: E 0 deg. OR E 0 deg. 0 min. 0 secs.	
Contractor: ABERCROMBIE	Rig/Platform Name/Num: 5		
Job Purpose: Cement Production Casing			Ticket Amount:
Well Type: Development Well		Job Type: Cement Production Casing	
Sales Person: BLAKEY, JOSEPH		Srvc Supervisor: HUMPHRIES, GARRY	MBU ID Emp #: 106085

Activity Description	Date/Time	Cht #	Rate bbl/min	Volume bbl		Pressure psig		Comments
				Stage	Total	Tubing	Casing	
Call Out	10/31/2006 06:30							
Casing on Bottom	10/31/2006 08:00							4 1/2" PRODUCTION CASING
Circulate Well	10/31/2006 08:10							
Crew Leave Yard	10/31/2006 09:00							
Arrive At Loc	10/31/2006 09:30							KCC
Assessment Of Location Safety Meeting	10/31/2006 09:35							JAN 31 2007
Rig-Up Equipment	10/31/2006 09:40							CONFIDENTIAL
Pre-Job Safety Meeting	10/31/2006 10:15							
Other	10/31/2006 10:45		2	11		.0	.0	PLUG RAT & MOUSE HOLE W/25sks
Test Lines	10/31/2006 12:00					4000.0	.0	
Pump Spacer 1	10/31/2006 12:05		4	50		750.0	750.0	MUD-FLUSH
Drop Bottom Plug	10/31/2006 12:12							1/2 WAY THROUGH SPACER
Pump Cement	10/31/2006 12:18		5	53		500.0	500.0	120sks MIXED @ 15#
Clean Lines	10/31/2006 12:31							
Drop Bottom Plug	10/31/2006 12:36							
Drop Top Plug	10/31/2006 12:37							
Pump Displacement	10/31/2006 12:40		7	117.3		250.0	250.0	RIG WATER

Sold To #: 302122

Ship To #: 2522194

Quote #:

RECEIVED
KANSAS CORPORATION COMMISSION

Sales Order #: 4721385
FEB 02 2007

SUMMIT Version: 7.10.386

Wednesday, January 31, 2007 11:37:00

CONSERVATION DIVISION
WICHITA, KS

HALLIBURTON

Cementing Job Log

Activity Description	Date/Time	Cht #	Rate bbl/ min	Volume bbl		Pressure psig		Comments
				Stage	Total	Tubing	Casing	
Displ Reached Cmnt	10/31/2006 12:42		5	20		500.0	500.0	
Bump Plug	10/31/2006 13:05		2	117		1200. 0	1200. 0	
Check Floats	10/31/2006 13:07		0	0		.0	.0	FLOAT HELD
Post-Job Safety Meeting (Pre Rig-Down)	10/31/2006 13:15							
Rig-Down Equipment	10/31/2006 13:20							
Rig-Down Completed	10/31/2006 14:00							
Crew Leave Location	10/31/2006 14:30							

Sold To #: 302122

Ship To #: 2522194

Quote #:

Sales Order #: 4721385

SUMMIT Version: 7.10.386

Wednesday, January 31, 2007 11:37:00



Scientific Drilling International

Survey Completion Report

Company: E.O.G. RESOURCES	Date: 11/8/2006	Time: 08:56:20	Page: 1
Field: Seward County Kansas	Co-ordinate(NE) Reference: Well: Lanora 1 1H, True North		
Site: Section 1 - 34S - 33W	Vertical (TVD) Reference: SITE 0.0		
Well: Lanora 1 1H	Section (VS) Reference: Well (0.00N,0.00E,315.00Azi)		
Wellpath: Original Wellpath	Survey Calculation Method: Minimum Curvature	Db: Sybase	

Survey: Survey #1 Survey #1 SDI MWD	Start Date: 10/23/2006	
Company: Scientific Drilling Internatio	Engineer: R Marsh	
Tool:	Tied-to: User Defined	

Field: Seward County Kansas Seward County Kanasa	
Map System: US State Plane Coordinate System 1927	Map Zone: Kansas, Southern Zone
Geo Datum: NAD27 (Clarke 1866)	Coordinate System: Well Centre
Sys Datum: Mean Sea Level	Geomagnetic Model: igrf2005

Site: Section 1 - 34S - 33W Seward County Kansas Section 1 - 34S - 33W		
Site Position: Lease Line	Northing: ft	Latitude: ft
From: Lease Line	Easting: ft	Longitude: ft
Position Uncertainty: 0.0 ft		North Reference: True
Ground Level: 0.0 ft		Grid Convergence: -1.45 deg

Well: Lanora 1 1H Lanora 1 1H	Slot Name:	
Well Position: +N/-S 0.0 ft	Northing: 173353.96 ft	Latitude: 37 7 7.910 N
+E/-W 0.0 ft	Easting: 1312258.66 ft	Longitude: 100 51 31.720 W
Position Uncertainty: 0.0 ft		

KCC
JAN 31 2007
CONFIDENTIAL

Wellpath: Original Wellpath Original Wellpath of Lanora 1 1H	Drilled From: Surface	Tie-on Depth: 0.0 ft	
Current Datum: SITE	Height: 0.0 ft	Above System Datum: Mean Sea Level	
Magnetic Data: 7/31/2006		Declination: 7.07 deg	
Field Strength: 52314 nT		Mag Dip Angle: 65.14 deg	
Vertical Section: Depth From (TVD)	+N/-S	+E/-W	Direction
ft	ft	ft	deg
0.0	0.0	0.0	315.00

MD ft	Incl deg	Azim deg	TVD ft	N/S ft	E/W ft	VS ft	DLS deg/100ft	ClsD ft	ClsA deg	Comment
5396.0	1.11	58.77	5395.8	25.4	9.2	11.5	0.00	27.1	19.93	Gyro Tie In Point
5414.0	1.55	354.97	5413.8	25.8	9.4	11.6	8.08	27.4	19.95	
5445.0	3.49	318.94	5444.8	26.9	8.7	12.9	7.79	28.3	17.92	
5477.0	6.86	310.36	5476.7	28.9	6.6	15.8	10.78	29.6	12.88	
5509.0	9.95	310.32	5508.3	31.9	3.0	20.4	9.66	32.1	5.44	
5540.0	13.00	309.00	5538.7	35.8	-1.7	26.6	9.87	35.9	357.26	
5571.0	16.09	306.06	5568.7	40.6	-7.9	34.3	10.25	41.3	348.98	
5603.0	19.06	303.07	5599.2	46.0	-15.9	43.8	9.70	48.7	340.98	
5633.0	21.75	303.00	5627.3	51.7	-24.6	54.0	8.97	57.3	334.54	
5664.0	24.46	304.65	5655.8	58.5	-34.7	65.9	8.99	68.0	329.31	
5696.0	27.95	305.69	5684.5	66.7	-46.3	79.8	11.00	81.1	325.23	
5727.0	31.54	306.86	5711.4	75.8	-58.7	95.1	11.73	95.8	322.25	
5756.0	34.27	308.27	5735.8	85.4	-71.1	110.7	9.78	111.1	320.19	
5787.0	37.51	308.51	5760.9	96.7	-85.4	128.7	10.46	129.0	318.54	
5818.0	40.59	308.15	5785.0	108.8	-100.7	148.1	9.96	148.2	317.20	
5850.0	43.97	308.13	5808.6	122.1	-117.6	169.5	10.56	169.5	316.06	
5881.0	48.11	308.07	5830.1	135.8	-135.2	191.6	13.36	191.6	315.13	
5912.0	51.72	308.87	5850.1	150.6	-153.8	215.2	11.81	215.2	314.40	
5944.0	54.91	311.64	5869.2	167.2	-173.3	240.8	12.15	240.8	313.96	
5976.0	57.72	313.69	5887.0	185.2	-192.9	267.4	10.27	267.4	313.83	
6007.0	60.29	314.18	5902.9	203.6	-212.0	293.9	8.40	294.0	313.84	
6039.0	63.28	314.70	5918.1	223.4	-232.2	322.1	9.45	322.2	313.90	
6070.0	66.85	314.58	5931.1	243.1	-252.2	350.2	11.52	350.3	313.96	
6102.0	69.74	314.34	5943.0	264.0	-273.4	380.0	9.06	380.0	314.00	

RECEIVED
KANSAS CORPORATION COMMISSION
FEB 02 2007
CONSERVATION DIVISION
WICM/TIA, KS



Scientific Drilling International

Survey Completion Report

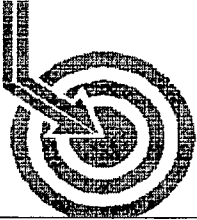
Company: E.O.G. RESOURCES Field: Seward County Kansas Site: Section 1 - 34S - 33W Well: Lanora 1 1H Wellpath: Original Wellpath	Date: 11/8/2006 Time: 08:56:20 Page: 2 Co-ordinate(NE) Reference: Well: Lanora 1 1H, True North Vertical (TVD) Reference: SITE 0.0 Section (VS) Reference: Well (0.00N,0.00E,315.00Azi) Survey Calculation Method: Minimum Curvature Db: Sybase
--	---

Survey

MD ft	Incl deg	Azim deg	TVD ft	N/S ft	E/W ft	VS ft	DLS deg/100ft	ClsD ft	ClsA deg	Comment
6134.0	73.66	313.42	5953.0	285.0	-295.3	410.3	12.55	410.4	313.99	
6165.0	76.11	313.66	5961.1	305.6	-317.0	440.2	7.94	440.3	313.96	
6196.0	77.34	313.48	5968.2	326.4	-338.8	470.4	4.01	470.5	313.93	
6226.0	79.05	313.44	5974.3	346.6	-360.1	499.8	5.70	499.8	313.90	
6258.0	80.55	314.08	5980.0	368.4	-382.9	531.2	5.08	531.3	313.90	
6288.0	82.85	313.74	5984.3	389.0	-404.3	560.9	7.75	561.0	313.90	
6320.0	85.15	313.72	5987.7	411.0	-427.3	592.7	7.19	592.8	313.89	
6335.0	86.81	313.64	5988.7	421.3	-438.1	607.7	11.08	607.8	313.88	
6427.0	90.00	311.15	5991.3	483.3	-506.0	699.5	4.40	699.7	313.69	
6475.0	89.90	311.92	5991.3	515.1	-541.9	747.5	1.62	747.7	313.55	
6506.0	89.66	311.69	5991.5	535.8	-565.0	778.4	1.07	778.7	313.48	
6535.0	89.53	311.39	5991.7	555.0	-586.7	807.4	1.13	807.7	313.41	
6566.0	89.53	311.05	5991.9	575.5	-610.1	838.3	1.10	838.6	313.33	
6597.0	89.97	311.74	5992.1	596.0	-633.3	869.2	2.64	869.6	313.26	
6628.0	90.10	312.25	5992.0	616.7	-656.3	900.2	1.70	900.6	313.22	
6659.0	90.13	311.54	5992.0	637.4	-679.4	931.1	2.29	931.6	313.17	
6690.0	90.34	311.76	5991.8	658.0	-702.6	962.1	0.98	962.6	313.12	
6722.0	90.44	312.99	5991.6	679.6	-726.2	994.0	3.86	994.6	313.10	
6753.0	90.67	313.29	5991.3	700.8	-748.8	1025.0	1.22	1025.6	313.10	
6784.0	90.60	313.20	5991.0	722.0	-771.4	1056.0	0.37	1056.6	313.10	
6815.0	90.44	312.76	5990.7	743.1	-794.1	1087.0	1.51	1087.6	313.10	
6847.0	90.13	312.62	5990.5	764.8	-817.6	1119.0	1.06	1119.6	313.09	
6878.0	91.14	313.19	5990.2	785.9	-840.3	1149.9	3.74	1150.6	313.08	
6909.0	91.51	312.99	5989.5	807.1	-863.0	1180.9	1.36	1181.6	313.08	
6941.0	91.28	313.15	5988.7	829.0	-886.3	1212.9	0.88	1213.6	313.08	
6972.0	91.27	313.17	5988.0	850.2	-908.9	1243.9	0.07	1244.6	313.09	
7004.0	89.93	312.61	5987.7	871.9	-932.4	1275.8	4.54	1276.6	313.08	
7035.0	89.53	312.25	5987.8	892.8	-955.3	1306.8	1.74	1307.6	313.07	
7066.0	89.63	312.65	5988.1	913.8	-978.1	1337.8	1.33	1338.6	313.05	
7097.0	89.33	313.39	5988.3	934.9	-1000.8	1368.8	2.58	1369.5	313.05	
7128.0	89.30	313.57	5988.7	956.2	-1023.3	1399.7	0.59	1400.5	313.06	
7159.0	89.36	313.29	5989.1	977.6	-1045.8	1430.7	0.92	1431.5	313.07	
7191.0	89.06	313.51	5989.5	999.5	-1069.0	1462.7	1.16	1463.5	313.08	
7222.0	88.72	314.27	5990.1	1021.0	-1091.4	1493.7	2.69	1494.5	313.09	
7253.0	89.50	313.62	5990.6	1042.5	-1113.7	1524.7	3.28	1525.5	313.11	
7284.0	90.57	313.80	5990.6	1064.0	-1136.1	1555.7	3.50	1556.5	313.12	
7315.0	91.01	314.32	5990.1	1085.5	-1158.4	1586.7	2.20	1587.5	313.14	
7347.0	91.14	314.25	5989.5	1107.9	-1181.3	1618.7	0.46	1619.5	313.16	
7378.0	91.38	313.99	5988.9	1129.4	-1203.5	1649.7	1.14	1650.5	313.18	
7408.0	91.48	313.79	5988.1	1150.2	-1225.2	1679.6	0.75	1680.5	313.19	
7439.0	90.81	314.46	5987.5	1171.8	-1247.4	1710.6	3.06	1711.5	313.21	
7469.0	90.81	314.57	5987.1	1192.8	-1268.8	1740.6	0.37	1741.5	313.23	
7501.0	89.87	315.15	5986.9	1215.4	-1291.5	1772.6	3.45	1773.4	313.26	
7532.0	89.83	315.38	5987.0	1237.4	-1313.3	1803.6	0.75	1804.4	313.30	
7551.0	89.93	315.38	5987.0	1250.9	-1326.6	1822.6	0.53	1823.4	313.32	
7601.0	90.19	315.38	5986.9	1286.5	-1361.8	1872.6	0.52	1873.4	313.37	7601' MD 1872.62 ft

KCC
 JAN 31 2007
 CONFIDENTIAL

RECEIVED
 KANSAS CORPORATION COMMISSION
 FEB 02 2007
 CONSERVATION DIVISION
 WICHITA, KS



Scientific Drilling

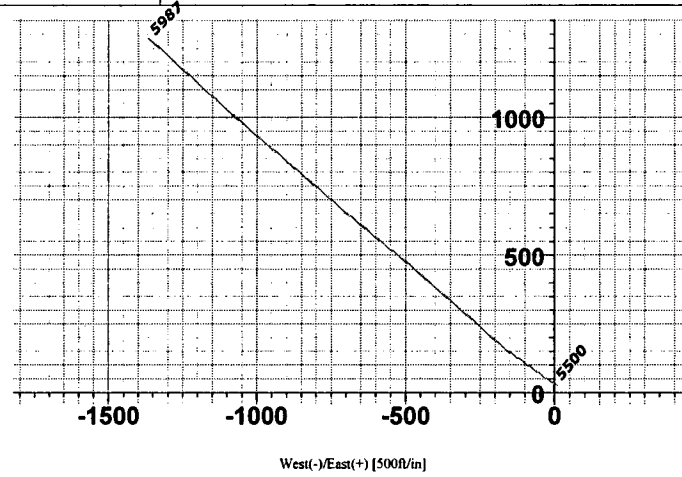
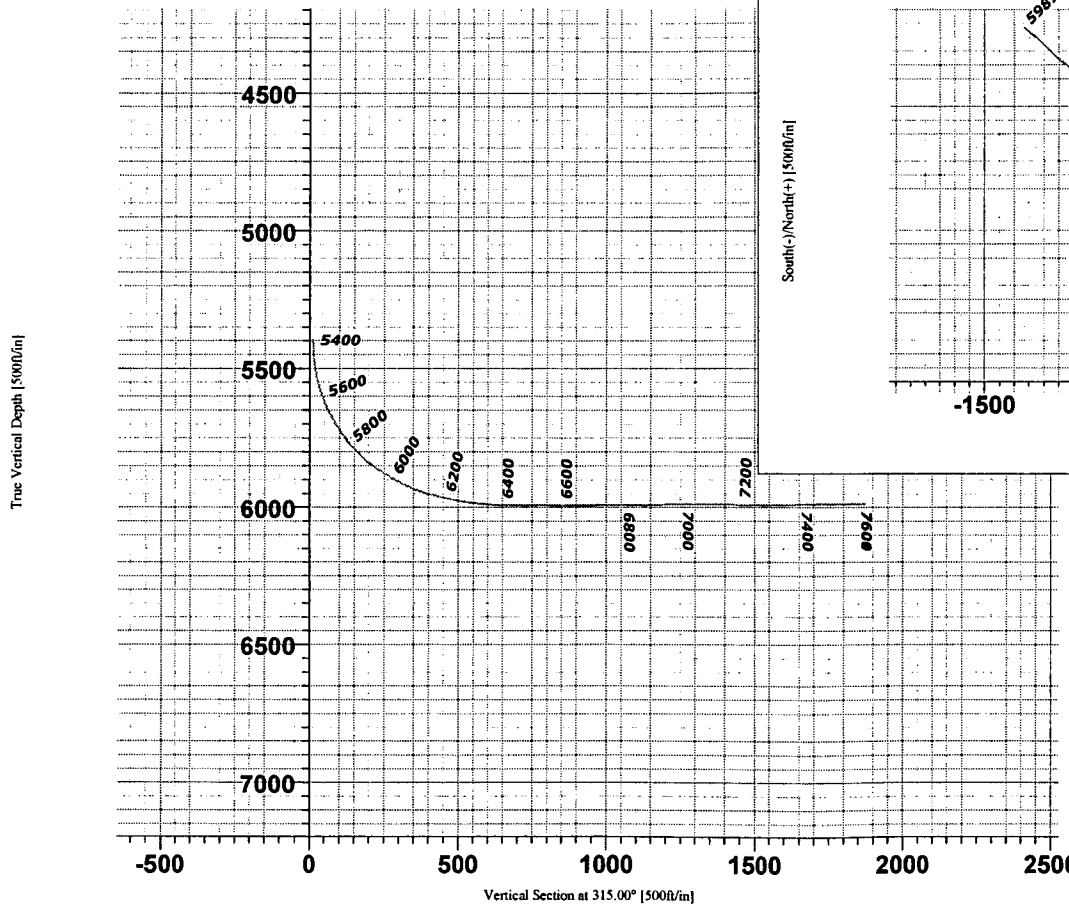
E.O.G. RESOURCES

Field: Seward County Kansas
Site: Section 1 - 34S - 33W
Well: Lanora 1 1H
Wellpath: Original Wellpath
Survey: Survey #1



Azimuths to True North
Magnetic North: 7.07°

Magnetic Field
Strength: 52314nT
Dip Angle: 65.14°
Date: 7/31/2006
Model: igrf2005



Bottom Hole Location from Surface
5986.9(TVD) [286.5 North & 1361.8' West
Bottom Hole Vertical Section
7601.0' AID [872.6 feet @ 315.38 Azimuth

This survey is correct to the best of my knowledge
and is supported by actual field data.

Company Representative

RECEIVED
KANSAS CORPORATION COMMISSION
CONSERVATION DIVISION
WICHITA, KS
FEB 02 2007

KCC
JAN 31 2007
CONFIDENTIAL



1-31-09

3817 NW Expressway, Suite 500
Oklahoma City, OK 73112
(405) 246-3130

January 31, 2007

Kansas Corporation Commission
Conservation Division
Finney State Office Building
130 S. Market, Room 2078
Wichita, KS 67202-3802

KCC
JAN 31 2007
CONFIDENTIAL

Re: Electric Logs & All Applicable Information
Lanora 1 #1H
API No. 15-175-22066-0100

Dear Sir or Madam:

EOG Resources, Inc. requests that all Electric Logs and Applicable Information pertaining to the Lanora 1 #1H lease are held confidential for the maximum applicable time period allowed by the Kansas Corporation Commission to include any future allowable extensions.

Regards,

A handwritten signature in cursive script that reads "Mindy Black".

Mindy Black
Regulatory Operations Assistant

RECEIVED
KANSAS CORPORATION COMMISSION
FEB 02 2007
CONSERVATION DIVISION
WICHITA, KS

energy opportunity growth