

ORIGINAL

**KANSAS CORPORATION COMMISSION
OIL & GAS CONSERVATION DIVISION
WELL COMPLETION FORM
WELL HISTORY - DESCRIPTION OF WELL & LEASE**

Form ACO-1
September 1999
Form Must Be Typed

Operator: License # 33640
Name: Haas Petroleum, LLC
Address: 800 West 47th Street, Suite #409
City/State/Zip: Kansas City, MO 64112
Purchaser: Plains Marketing, L.P.
Operator Contact Person: Mark Haas
Phone: (816) 531.5922
Contractor: Name: Skyy Drilling, LLC
License: 33557
Wellsite Geologist: David Griffin, RG.

Designate Type of Completion:

☒ New Well ☐ Re-Entry ☐ Workover
☐ Oil ☐ SWD ☐ SLOW ☐ Temp. Abd.
☐ Gas ☒ ENHR ☐ SIGW
☐ Dry ☐ Other (Core, WSW, Expl., Cathodic, etc)

If Workover/Re-entry: Old Well Info as follows:

Operator: _____
Well Name: _____
Original Comp. Date: _____ Original Total Depth: _____
☐ Deepening ☐ Re-perf. ☐ Conv. to Enhr./SWD
☐ Plug Back ☐ Plug Back Total Depth
☐ Commingled ☐ Docket No. _____
☐ Dual Completion ☐ Docket No. _____
☐ Other (SWD or Enhr.?) ☐ Docket No. _____

<u>07/31/07</u>	<u>08/03/07</u>	<u>08/06/07</u>
Spud Date or Recompletion Date	Date Reached TD	Completion Date or Recompletion Date

API No. 15 - 207-27201-0000
County: Woodson
SW SW NE NW Sec. 07 Twp. 24 S. R. 14 ☒ East ☐ West
1146 feet from S / (N) (circle one) Line of Section
1630 feet from E / (W) (circle one) Line of Section

Footages Calculated from Nearest Outside Section Corner:

(circle one) NE SE (NW) SW
Lease Name: Smith Jobe Well #: 13H
Field Name: Winterschied

Producing Formation: Mississippian Dolomite
Elevation: Ground: 1184' Kelly Bushing: 1191'
Total Depth: 1786' Plug Back Total Depth: 1766'
Amount of Surface Pipe Set and Cemented at 40 Feet
Multiple Stage Cementing Collar Used? ☐ Yes ☒ No
If yes, show depth set _____ Feet
If Alternate II completion, cement circulated from 1766'
feet depth to surface _____ w/ 135 sx.cmt.

Drilling Fluid Management Plan

(Data must be collected from the Reserve Pit)

Chloride content _____ ppm Fluid volume _____ bbls
Dewatering method used _____

Location of fluid disposal if hauled offsite:

Operator Name: _____
Lease Name: _____ License No.: _____
Quarter _____ Sec. _____ Twp. _____ S. R. _____ ☐ East ☐ West
County: _____ Docket No.: _____

INSTRUCTIONS: An original and two copies of this form shall be filed with the Kansas Corporation Commission, 130 S. Market - Room 2078, Wichita, Kansas 67202, within 120 days of the spud date, recompletion, workover or conversion of a well. Rule 82-3-130, 82-3-106 and 82-3-107 apply. Information of side two of this form will be held confidential for a period of 12 months if requested in writing and submitted with the form (see rule 82-3-107 for confidentiality in excess of 12 months). One copy of all wireline logs and geologist well report shall be attached with this form. ALL CEMENTING TICKETS MUST BE ATTACHED. Submit CP-4 form with all plugged wells. Submit CP-111 form with all temporarily abandoned wells.

All requirements of the statutes, rules and regulations promulgated to regulate the oil and gas industry have been fully complied with and the statements herein are complete and correct to the best of my knowledge.

Signature: Maricia LittelTitle: Agent Date: 2/18/08Subscribed and sworn to before me this 18th day of February20 08Notary Public: Maureen EltonDate Commission Expires: 2/18/2010

KCC Office Use ONLY

N

Letter of Confidentiality Received

✓

If Denied, Yes ☐ Date: _____

Wireline Log Received

Geologist Report Received

UIC Distribution

Maureen Elton
Notary Public State of Kansas
My Appt Expires 2/18/2010

RECEIVED
KANSAS CORPORATION COMMISSION

FEB 25 2008

CONSERVATION DIVISION
WICHITA, KS

Side Two

Operator Name: Haas Petroleum, LLC Lease Name: Smith Jobe Well #: 13H
 Sec. 07 Twp. 24 S. R. 14 ☒ East ☐ West County: Woodson

INSTRUCTIONS: Show important tops and base of formations penetrated. Detail all cores. Report all final copies of drill stems tests giving interval tested, time tool open and closed, flowing and shut-in pressures, whether shut-in pressure reached static level, hydrostatic pressures, bottom hole temperature, fluid recovery, and flow rates if gas to surface test, along with final chart(s). Attach extra sheet if more space is needed. Attach copy of all Electric Wireline Logs surveyed. Attach final geological well site report.

Drill Stem Tests Taken ☐ Yes ☒ No
 (Attach Additional Sheets)

Samples Sent to Geological Survey ☐ Yes ☒ No

Cores Taken ☐ Yes ☒ No

Electric Log Run ☒ Yes ☐ No
 (Submit Copy)

List All E. Logs Run:

Dual Induction, Micro, Compensated Sonic, Litho
 Density Compensated Neutron
 Gamma Ray/Neutron/CCL

☐ Log Formation (Top), Depth and Datum ☒ Sample
 Name Top Datum
 Mississippian Dolomite 1731' (540)

CASING RECORD ☒ New ☐ Used

Report all strings set-conductor, surface, intermediate, production, etc.

Purpose of String	Size Hole Drilled	Size Casing Set (In O.D.)	Weight Lbs. / Ft.	Setting Depth	Type of Cement	# Sacks Used	Type and Percent Additives
Surface	12 1/4"	8 5/8"	20.5#	40'	Class "A"	35	2% CaCl ₂ , 2% Gel
Production	6 3/4"	4 1/2"	9.5#	1766'	60/40 Poz Mix	135	8% gel, 1/4# flocele

ADDITIONAL CEMENTING / SQUEEZE RECORD

Purpose:	Depth Top Bottom	Type of Cement	#Sacks Used	Type and Percent Additives
____ Perforate				
____ Protect Casing				
____ Plug Back TD				
____ Plug Off Zone				

Shots Per Foot	PERFORATION RECORD - Bridge Plugs Set/Type Specify Footage of Each Interval Perforated	Acid, Fracture, Shot, Cement Squeeze Record (Amount and Kind of Material Used)	Depth
4 SPF	1728-1738'	1250 gal. 15% HCL	1728-1738'

TUBING RECORD	Size	Set At	Packer At	Liner Run	<input type="checkbox"/> Yes <input type="checkbox"/> No
	2 3/8"	1700'			
Date of First, Resumerd Production, SWD or Enhr.	Producing Method <input type="checkbox"/> Flowing <input type="checkbox"/> Pumping <input type="checkbox"/> Gas Lift <input type="checkbox"/> Other (Explain)				
Estimated Production Per 24 Hours	Oil Bbls.	Gas Mcf	Water Bbls.	Gas-Oil Ratio	Gravity

Disposition of Gas

METHOD OF COMPLETION

Production Interval

☐ Vented ☐ Sold ☐ Used on Lease
 (If vented, Submit ACO-18.)

☐ Open Hole ☒ Perf. ☐ Dually Comp. ☐ Commingled
☐ Other (Specify) _____

RECEIVED
 KANSAS CORPORATION COMMISSION

FEB 25 2008

CONSERVATION DIVISION
 WICHITA, KS

CONSOLIDATED OIL WELL SERVICES, LLC

P.O. BOX 884, CHANUTE, KS 66720

620-431-9210 OR 800-467-8676

TICKET NUMBER **12368**

LOCATION **EUREKA**

FOREMAN **KEVIN MCCOY**

TREATMENT REPORT & FIELD TICKET CEMENT

DATE	CUSTOMER #	WELL NAME & NUMBER	SECTION	TOWNSHIP	RANGE	COUNTY
8-6-07	3451	Smith - Jobe # 13 H				ANDREW
CUSTOMER HAAS Petroleum, LLC						
MAILING ADDRESS 800 West 47th Ste 409						
CITY KANSAS CITY	STATE MO.	ZIP CODE 64112				
			TRUCK #	DRIVER	TRUCK #	DRIVER
			445	Justin		
			479	RICK		
			515	CALIN		
			436	Shannon		

JOB TYPE **Longstring** HOLE SIZE **6 3/4** HOLE DEPTH **1786'** CASING SIZE & WEIGHT **4 1/2" 9.5" N80**
 CASING DEPTH **1789' ME** DRILL PIPE TUBING OTHER **1779' ME**
 SLURRY WEIGHT **12.8-13.5** SLURRY VOL **54 BBL** WATER gal/sk **8.0-8.5** CEMENT LEFT in CASING **10'**
 DISPLACEMENT **29 BBL** DISPLACEMENT PSI **750** MAX PSI **1200 Bump Plug**

REMARKS: **Ready mixers. Rig up to 4 1/2" casing. Break circulation w/ 10 BBL fresh water. mixed 135 sks 6 3/4 Pozmix Cement w/ 8% Gel. 1/2" Plug per/sk @ 12.8" per/gal, yield 1.65. Tail in w/ 50 sks Thick Set Cement w/ 5" Kol-Seal per/sk @ 13.5" per/gal, yield 1.69. wash out Plug & lines. Shut down. Release Plug. Displace w/ 29 BBL fresh water. Final Pumping Pressure 750 PSI. Bump Plug to 1200 PSI. wait 2 minutes Release Pressure. Float Held. Good Cement Returns to Surface = 14 BBL To Pt. Job Complete. Rig down.**

ACCOUNT CODE	QUANTITY or UNITS	DESCRIPTION of SERVICES or PRODUCT	UNIT PRICE	TOTAL
5401	1	PUMP CHARGE	800.00	800.00
5406	30	MILEAGE 1st well of 2	3.00	90.00
1126 A	50 SKS	THICK SET Cement	15.00	750.00
1110 A	250 "	KOL-SEAL 5" per/sk Cement	.35	87.50
1131	135 SKS	6 3/4 Pozmix Cement	9.00	1215.00
1118 A	930 "	Gel 8%	.15	139.50
1107	34 "	Floccle 1/4" per/sk	1.90	64.60
5407	8.55 Tons	Ton Mileage Bulk Truck	MIC	855.00
5502 C	3 Hrs	80 BBL VAC TRUCK	70.00	210.00
1123	3800 gals	City water	12.00/1000	45.60
4404	1	4 1/2" Top Rubber Plug	70.00	70.00
4103	1	4 1/2" Cement Basket	190.00	190.00
			Sub Total	4000.70
			SALES TAX	260.25
			ESTIMATED TOTAL	4260.95

AUTHORIZATION Witnessed By Ben Harrell TITLE Toolpusher / SKYY Delg.

DATE 4326.20

RECEIVED
KANSAS CORPORATION COMMISSION
FEB 25 2008
CONSERVATION DIVISION
WICHITA, KS

THANK YOU 016309

TICKET NUMBER 12331
LOCATION Enroute
FOREMAN Tracy Smith

DATE	CUSTOMER #	WELL NAME & NUMBER	SECTION	TOWNSHIP	RANGE	COUNTY
7-21-07	3451	Smith Jobe #134				Madison
CUSTOMER Hess Petroleum, LLC						
MAILING ADDRESS 800 West 47th St 405						
CITY Kansas City		STATE Mo.	ZIP CODE 64112	TRUCK # 445 479	DRIVER Chase Feltz	

JOB TYPE <u>Box Pile</u>	HOLE SIZE <u>12 1/4"</u>	HOLE DEPTH <u>40'</u>	CASING SIZE & WEIGHT _____
CASING DEPTH <u>40'</u>	DRILL PIPE _____	TUBING _____	OTHER _____
SLURRY WEIGHT <u>150</u>	SLURRY VOL. <u>8.5 bbl</u>	WATER gal/sk <u>6.5"</u>	CEMENT LEFT In CASING _____
DISPLACEMENT <u>2001</u>	DISPLACEMENT PSI _____	MIX PSI _____	RATE _____

REMARKS: Safety marking. Rig up to 85% corg. Break Circulation w/ salt water. mixed 35% class A cement w/ 2% ash + 2% oil @ 15% w/c. Displace w/ 20% water. Start carry on. Good cement to surface.

Job Complete

[illegible]

AUTHORIZATION called by Ben TITLE Skye Corp. DATE _____

1544. 55

David B. Griffin, RG, Consulting Geologist

1502 W. 27th Terrace
Lawrence, Kansas 66046

Ph. (785) 842-3665
Cell (785) 766-0099
Fax (785) 856-3935

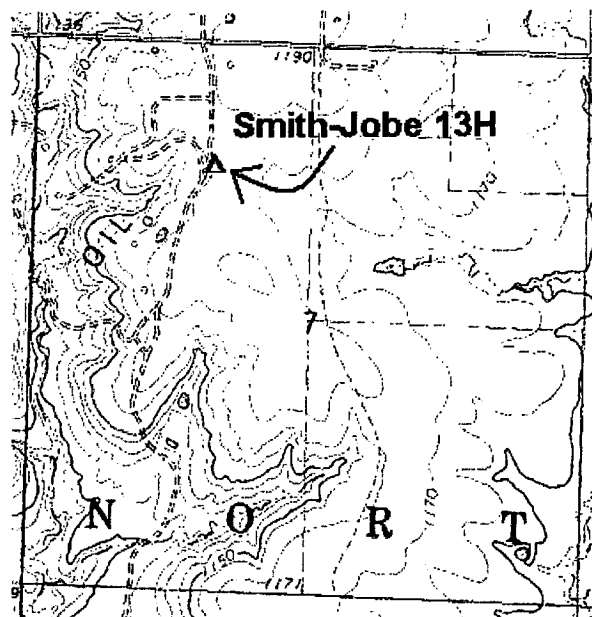
Geological Wellsite Report

August 5, 2007

Haas Petroleum, LLC
800 W. 47th St, Suite 409
Kansas City, MO 64112
Attn: Mark Haas

EnerJex Resources, Inc.
7300 W. 110th St., 7th Floor
Overland Park, KS 66210
Attn: Brad Kramer

RE: Geological Wellsite Report
 Smith-Jobe No. 13H, Injector Well
 SE SW NE NW4
 Section 7, T24S – R14E
 Woodson County, Kansas



The following report on the subject well includes detailed information and geological data based on microscopic examination of rotary drill cuttings and drill bit rate of penetration from 1250' to a total depth of 1737' below the kelly bushing. A detailed log that plots drilling time, sample cuttings description and the geological tops is included. Subsea corrected geological tops were derived by adding 3 feet to the surveyed ground level elevation of 1180.82' for a GL elevation of 1184' (since the drilled location was moved 25 feet to the east) for a KB Sample datum of 1191', which is approximately 7' above the ground level.

Daily Progress

July 31, 2007; Spud Well, Set 41' of 8 5/8-inch surface casing,
August 1, 2007; Drill from 41' to 716',
August 2, 2007; Drill from 716' to 970'
August 3, 2007, Drill from 970' to TD at 1786', Run Open-Hole and Sonic Log
August 4, 2007, Set and cement 4½-inch casing for set-thru completion.

RECEIVED
KANSAS CORPORATION COMMISSION

FEB 25 2008

CONSERVATION DIVISION
WICHITA, KS

Well Information

Well Name: Smith-Jobe No. 13H **Elev.:** Survey GL 1184', KB 1191'

Location: SE SW NE NW4
Section 7, T 24S--R 14E
Woodson County, Kansas

GPS lat long Coord: N37.97846, W-95.91612

API No.: 15-207-27201-0000 **Field:** Winterschied

Operator: Haas Petroleum, LLC

Contact Person: Mark Haas

Drilling Co.: Skyy Drilling
Yates Center, Kansas, 66865
KS Operator License No.: 33557

Drilling Co. Owner: Mark Haas **Tool Pusher:** Ben Harrell

Cement Co.: Consolidated Oil Well Service Co.
KS Operator License No.: 04996

Status: Pending Completion **Spud Date:** July 31, 2007

Rotary Total Depth: 1786' KB **Date Reached TD:** August 2, 2007

Surface Casing: Hole drilled with 2 1/4" bit, 41' of 8 5/8" casing,
Cemented with approximately 30 sacks of class "A" cement with 2% gel
and 3% CaCl₂ on July 31, 2007.

Drilling Notes: Second well with 5-blade (Ulterra) PDC 6 3/4-inch Bit from 41' to 1786'
(6) 5 3/4-inch drill collars
3 1/2" by 31' (average length) drill pipe
Mud pump, 2-Cylinder, 6" x 12" stroke
Drilling time provided from 1250' to TD
Sample travel time to surface (lag), approx. 1 min. per 150 feet

Mud Program: Native fresh water mud to 1100', fresh water gel mud from 1100' to TD
Fudd Mud, Inc. provided daily monitoring of chemical drilling mud,
Preferred properties; 33 to 36 vis, 8.9 to 9.4 wt.

RECEIVED
KANSAS CORPORATION COMMISSION

FEB 25 2008

CONSERVATION DIVISION
WICHITA, KS

Geological Supervision:

David Griffin, RG, provided wellsite supervision on August 3rd and 4th, 2007 for depths from 1250' to 1786' TD and for Open-Hole Logging. Samples microscopically examined for the entire interval.

Logs and Cores:

Open-hole gamma-ray, density and neutron porosity, dual induction, micro logs and Sonic logs were ran for this well by Superior Wireline. A cased-hole gamma-ray neutron log will later be obtained for correlation and perforation considerations. No cores were cut for this well.

Geological Datums:

Smith-Jobe No. 13H, Geological Tops				Smith-Jobe 14H	Estes 18
SE SW NE NW4 Sec. 7	KB Sample Depth		KB OH-Log Depth		NW SE NE NW4
					N2 N2 SE NW4
Surveyed KB Elev. 1191	KB Depth	Subsea	KB Depth	Subsea	Surveyed KB Elev. 1194, Sample Subsea
Ireland SS			284	907	
Base of Kansas City Group			1008	183	
Cherokee Group	1326	-135	1326	-135	-134
U. Squirrel SS	1332	-141	1332	-141	-141
Ardmore LS	1421	-230	1420	-229	-233
Cattleman SS	1452	-261	1450	-259	
Bartlesville Zone Marker	1530	-339	1532	-341	-331
Bartlesville SS	1540	-349	1542	-351	-356
Chat Conglomerate	1693	-502	1692	-501	-499
Mississippian LS	1700	-509	1698	-507	-506
Miss. Dol, Pay Zone	1731	-540	1730	-539	-540
Total Depth	1786	-595	1785	-594	-543

Structural Comparisons:

Structural comparison of subsea corrected geological sample tops for this well, Smith-Jobe No. 13H, indicates that the top of the dolomite pay zone was 8' lower in structure to the new producer, Estes No. 18 lying approximately 444' southeast.

RECEIVED
KANSAS CORPORATION COMMISSION

FEB 25 2003

CONSERVATION DIVISION
WICHITA, KS

Sample Observations of Zones with Hydrocarbon Shows

Pennsylvanian; Upper Squirrel Sandstone:

1332' to 1337', KB;

Sandstone, gray to dark gray, very fine to fine grained, sub-angular quartz, poor to fair porosity, no odor, spotty to good show of heavy oil and tar, minor bleeding of heavy free oil, no oil scum on side of sample bags, zone is non-commercial.

Mississippian; Dolomite, Pay Zone:

1731' to 1736', KB, (1724' to 1729', GL); Upper Pay Zone

Dolomite, calcareous, tan to light brown, very fine to fine crystalline, fair to good crystalline porosity, fair to good vugular porosity, good odor, fair to good show of free oil washing from sample and on sample bag, 20% to 30% bright green sample fluorescence. This is the top pay zone.

1740' to 1743', KB, (1733' to 1736', GL); Lower Pay Zone

Dolomite, calcareous, tan to brownish gray, very fine to fine crystalline, fair to good crystalline porosity and fair to very good vugular porosity, strong oil odor, good show of oil bleeding from sample cuttings and on sample bags, 20% to 35% bright green hydrocarbon fluorescence, 20% chert, white, tan or light gray, 20% Limestone, tan to gray with gray mottling. This interval appears to be better than the upper zone.

Note: The temperature was in the 90's when drilling the pay zone and may have facilitated evaporation of the light gravity oil show on the cuttings resulting in lower fluorescent observations.

RECEIVED
KANSAS CORPORATION COMMISSION
FEB 23 2008
CONSERVATION DIVISION
WICHITA, KS

Sample Observations of Other Zones of Interest

Pennsylvanian; Bartlesville Sandstone:

1540' to 1640' KB;

Sandstone, light gray to tan, very fine to medium grained with minor coarse grains toward lower half, sub-angular to sub-rounded quartz, interbeds of gray to dark gray micaceous silty shale, fair to very good porosity, abundant loose sand grains and increasing porosity from 1590' to 1630', varying amounts of mica and carbon, no odor, no oil show or fluorescence.

Pennsylvanian; Chat, Conglomerate?:

1693' to 1700' KB;

Siltstone, 50%, light tan to light gray to dark brown some with clay matrix, Shale, 45% light gray to light tan, and dark gray shale, possibly conglomeratic, chert, 5% white to translucent gray to tan with oolitic characteristics, trace of fine and medium size, well rounded quartz sand grains, faint odor, no show of oil or fluorescence.

Mississippian:

Limestone, 1700' to 1731' KB;

Limestone, cream to off-white to tan to light gray, abundant gray mottling below 1712, very fine to medium crystalline, grainstone, fossiliferous (some are bryozoans), poor to fair crystalline porosity, poor to trace of vugular porosity; 1-2% chert white to tannish gray in top 5 feet, a thin bed or two of very fine grained glassy tight sandstone is present. A zone of dolomite interbeds lies from 1704 to 1712, very calcareous, poor to fair porosity with 40% dull fluorescence, no odor, no show of oil, no bright green fluorescence. Also from 1719' to 1730' there are interbeds of dolomitic shale dark brown and calcareous dolomite, tan, very fine crystalline, poor to fair crystalline porosity, fair vugular porosity with no fluorescence.

RECEIVED
KANSAS CORPORATION COMMISSION
FEB 25 2008
CONSERVATION DIVISION
WICHITA, KS

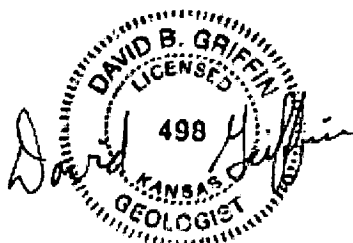
Recommendations:

Approximately 5' of dolomite pay zone was penetrated from 1731' to 1736' KB with a good oil odor and fair to good show of free light gravity and approximately 3' of dolomite pay zone was penetrated from 1740' to 1743' KB with a strong oil odor and good show of free oil. The pay zones had fair to good crystalline porosity and fair to very good vugular porosity development. The top of the upper dolomite pay zone was at a subsea elevation of -540', which is 8' structurally lower than the top of the pay zone in Estes 18, a new producer lying 444' to the southeast.

With the good showing of oil, the operator set and cemented 4½-inch casing to total depth for completion thru perforations.

I recommend perforating the pay zones at the corrected ground level depths of 1724' to 1729' GL and 1733' to 1736' GL.

Respectfully Submitted,



David B. Griffin, RG
Consulting Geologist

Attachments: Drilling Time, Sample Description and Geological Tops Log



[illegible]

Depth	Lithology	Shows	Drilling Time in Minutes per Foot Rate of Penetration Decreases 5 10 15 20 25 30	Well No: Smith-Jobe No. 13H Location: SESW NE NW4 SEC 7, T24S-R14E		Pg. 2 of 3 Datum/Elev. KB1191
				Sample Descriptions	Remarks	
1500 8-3-07 10AM			10' samples	sh, ggy, mica, 20% cse silt lam. NS		
				AA		
				sh, vdk ggy, hard, limey		
				sh, blk		BV zone marker 1530(-339)
				sh, ggy, silty, 10% v fss lam, mica, NS		BV SS 1540(-349)
1550			Mud 34 Vis 9.1 Wt	sh, ltgy to blk/coal, siltst lam		
				SS, 30%, ltgy, v f-t gnd, fr-gd φ, sh ggy mica		
				SS, 40% AA, NS fr-gd φ		
				SS, 50% AA, NS fr-gd φ minor loose qtz grains		
				SS, 40%, NS, fr-vgd φ, mostly f. gnd, subang. some loose grains		
1600				SS, 60%, v f-t-minor med. gnd. gd-vgd φ, NS, tan clay stone		
				SS, 70%, vltgy to tan, f-cse gnd. tan due to clay?, fr-vgd φ NS		
				SS, 80%, AA, ga-exc φ, NS mostly loose grains, sub ang to sub rnd, No Fluor		
				SS, tan to ltgy 60%, fr-vgd φ NS f-cse gnd, NS, No Fluor		
				sh ggy to blk, 30% SS AA min-brn claystone + coal		
1650				sh, vdk ggy, silty, limey, 10% SS AA		
				sh, vltgy, to vdk ggy, coal		
			begin 5' samples begin stop watch time	mostly vltgy shale, coal sh, vltgy silty coal sh, vltgy to blk		
				coal siltstone, lt tan to ltgy to dk brn w/shale/ltgy to lt tan, chert 5%, wh to trans. ggy rotan oolite?	Chat 1693(-502)	
1700				LS, ltgy to lt tanish-gy, v f-t ln pr-fr φ, faint odor No Fluor, 1-2% chert Dol, v. calc, v fxt ln, pr-fr φ, No vgs, No odor 40% dull green fluor.	Miss LS 1700(-509)	
			5-10-15 CFS	LS, vltgy w/gy mottling, f-mx+ln, pr-fr φ, minor tan NS		
			5-10-15 CFS	shale, dolomitic, dk brn v. min. glassy ss qtz interbeds LS, off-wh to ltgy w/gy mottling, pr-fr φ NS 10% glassy ss, w/ool interbeds pr φ	Dolomite Pay Zone	
			5-10-15 CFS	Dol, calc, tan, fr-gd x+ln φ, 60% odor fr-gd oil, scum washing, min. LS interbed, 5% chert wh-tan	1731(-540) Upper Pay Zone 1731-1736 Lower Pay Zone 1740-1743	
1750				Dol, calc, tan, v f-t x+ln, gd x+ln φ, gd-vgd vug φ, str odor, fr-gd show oil, 10% LS, 10% chert		
				LS, tan w/gy mottling		

[illegible]