

15-051-20, 302-00-00

TO BE FILED WITH THE STATE CORPORATION COMMISSION PRIOR TO COMMENCEMENT OF WELL

1. Operator Kern Drilling Company, Inc. Address Box 688, Magnolia, Arkansas 71753
2. Lease name Chrisler Well No. 1 County Ellis
3. Well Location NE NW NW Sec. 25 Township 11S Range 16W
4. Well to be drilled 330 ft. from nearest lease line.
5. Drilling Contractor Hellar Drilling Company, Inc. Address 339 Union Center Bldg., Wichita, Kansas 67202
6. Type of equipment: Rotary  Cable Tool  Approx. date operation to begin August 16 1968.
7. Well to be drilled for Oil  Gas  Disposal  Input  Estimated Total Depth of Well 3450 ft.
8. Depth of deepest fresh water well within one mile of location 42 ft. If none exists, write NONE.
9. Ground elevation at location is approx. 5 ft. higher or \_\_\_\_\_ ft. lower than ground elevation at water well.
10. Depth of the deepest municipal water well within three miles of location \_\_\_\_\_ ft. If none exists, write NONE  
None
11. Operator states that he will set surface pipe at least 25 ft. below all Tertiary or unconsolidated deposits and, taking into consideration differences in ground elevations, that the minimum depth necessary, to the best of his knowledge and belief, to protect all fresh water zones is 80 ft. and operator agrees to set surface pipe at this location to a depth of not less than 210 ft. Alternate 1  Alternate 2 .

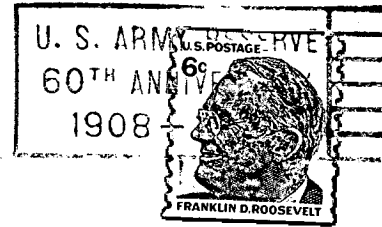
REMARKS: •

KERN DRILLING COMPANY, INC.

Signature of Operator

By:


  
D. L. Hellar



**State Corporation Commission of Kansas  
Conservation Division  
500 Insurance Building  
212 North Market  
Wichita, Kansas 67202**

**RECEIVED  
STATE CORPORATION COMMISSION  
AUG 16 1968  
CONSERVATION DIVISION  
Wichita, Kansas  
8-16-1968**

**(IF PREFERRED, MAIL IN ENVELOPE) :**