

STATE CORPORATION COMMISSION OF KANSAS
OIL & GAS CONSERVATION DIVISION
WELL COMPLETION OR RECOMPLETION FORM
ACO-1 WELL HISTORY
DESCRIPTION OF WELL AND LEASE

API NO. 15-.....065-22,326-00-00.....
County.....Graham.....
.....C.....NW.....SE Sec.25.....Twp.10S Rge.23.....X West

Operator: License #4134.....
Name ..Douglas P. Meyer Oil Investments.....
Address ..135 W. 4th St.....
City/State/Zip ..Russell, KS 67665.....

1980..... Ft North from Southeast Corner of Section
1980..... Ft West from Southeast Corner of Section
(Note: Locate well in section plat below)

Purchaser.....Inland.....

Lease Name.....Griffith.....Well #.....1.....

Operator Contact Person ..Douglas P. Meyer.....
Phone ..913-483-4501.....

Field Name.....Prairie Glen.....

Producing Formation.....LKC.....

Contractor: License #8241.....
Name ..Emphasis Oil Operations.....

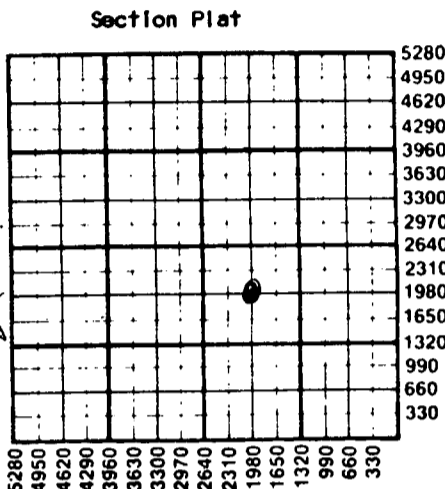
Elevation: Ground.....2337.....KB.....2342.....

Wellsite Geologist.....Wess Liley.....
Phone.....

Designate Type of Completion
 New Well Re-Entry Workover
 Oil SWD Temp Abd
 Gas Inj Delayed Comp.
 Dry Other (Core, Water Supply etc.)

If OMWO: old well Info as follows:
Operator ..
Well Name ..
Comp. DateOld Total Depth.....

RECEIVED
AUG 18 1988
STATE CORPORATION COMMISSION
CONSERVATION DIVISION
Wichita, Kansas



WATER SUPPLY INFORMATION
Disposition of Produced Water: _____ Disposal
Docket # _____ Repressuring

WELL HISTORY
Drilling Method:
 Mud Rotary Air Rotary Cable
..1/28/87... ..2/3/87... ..11-10-87...
Spud Date Date Reached TD Completion Date
..3980 RTD... ..
Total Depth PBTD

Questions on this portion of the ACO-1 call:
Water Resources Board (913) 296-3717
Source of Water:
Division of Water Resources Permit #.....
 Groundwater..2970 Ft North from Southeast Corner
(Well) ..4950 Ft West from Southeast Corner of
Sec 30 Twp 10 Rge 22 ___ East X West
___ Surface Water.....Ft North from Southeast Corner
(Stream, pond etc).....Ft West from Southeast Corner
Sec Twp Rge ___ East ___ West
___ Other (explain).....
(purchased from city, R.W.D. #)

Amount of Surface Pipe Set and Cemented at.218 feet
Multiple Stage Cementing Collar Used? Yes No
If yes, show depth set...1204.....feet
If alternate 2 completion, cement circulated
from.....feet depth to.....w/.....SX cmt
Cement Company Name ..
Invoice # ..

INSTRUCTIONS: This form shall be completed in duplicate and filed with the Kansas Corporation Commission, 200 Colorado Derby Building, Wichita, Kansas 67202, within 90 days after completion or recompletion of any well. Rule 82-3-130 and 82-3-107 apply.
Information on side two of this form will be held confidential for a period of 12 months if requested in writing and submitted with the form. See rule 82-3-107 for confidentiality in excess of 12 months.
One copy of all wireline logs and drillers time log shall be attached with this form. Submit CP-4 form with all plugged wells. Submit CP-111 form with all temporarily abandoned wells.

All requirements of the statutes, rules and regulations promulgated to regulate the oil and gas industry have been fully complied with and the statements herein are complete and correct to the best of my knowledge.

Signature ..Douglas P Meyer.....

Title..... Date ..4-1-87.....

Subscribed and sworn to before me this ..1st... day of ..April...
19...87...

Notary Public.....Ann L Meyer.....

Date Commission Expires.....3-28-90.....

K.C.C. OFFICE USE ONLY
F Letter of Confidentiality Attached
C Wireline Log Received
C Drillers Timelog Received
Distribution
 KCC SWD/Reg NGPA
 KGS Plug Other
STATE CORPORATION COMMISSION
(Specify)

ANN L MEYER
NOTARY PUBLIC
STATE OF KANSAS
MY APPT. EXPIRES

NOV 24 1987
11-24-1987
APR 15 1989
Form ACO-1 (7-84)
CONSERVATION DIVISION
Wichita, Kansas

Sec. 25 Twp. 10 S Rge. 23 W

SIDE TWO

Operator Name Douglas P. Meyer Oil Investments Lease Name Griffith Well 7.1

Sec. 25 Twp. 10 Rge. 23 East West County Graham

WELL LOG

INSTRUCTIONS: Show important tops and base of formations penetrated. Detail all cores. Report all drill stem tests giving interval tested, time tool open and closed, flowing and shut-in pressures, whether shut-in pressure reached static level, hydrostatic pressures, bottom hole temperature, fluid recovery, and flow rates if gas to surface during test. Attach extra sheet if more space is needed. Attach copy of log.

Drill Stem Tests Taken Yes No
 Samples Sent to Geological Survey Yes No
 Cores Taken Yes No

Formation Description Log Sample

DST #1 3610-3650
(LKC A + B zones)

DST #2 3660-3720
(LKC D, E, F, G zones)

DST #3 3725-3790
(LKC H, I, J zones)

Name	Top	Bottom
Anhydrite	1841 (+501)	
B/Anhydrite	1884 (+458)	
Heebner	3570 (-1228)	
Toronto	3594 (-1252)	
LKC	3606 (-1264)	
BKC	3834 (-1492)	
Marmaton	3928 (-1586)	
L.T.D.	3979 (-1637)	

CASING RECORD New Used
 Report all strings set-conductor, surface, intermediate, production, etc.

Purpose of String	Size Hole Drilled	Size Casing Set (in O.D.)	Weight Lbs/Ft.	Setting Depth	Type of Cement	#Sacks Used	Type and Percent Additives
Surface	12 1/4"	8-5/8"	20	218	Common	140	3% c.c., 2% gel
Production (top stage)	7-7/8"	4-1/2"	9 1/2	3979	Class A	200	2% gel, 2% c.c.
					50/50 pot	200	8% gel

Shots Per Foot	Specify Footage of Each Interval Perforated	Acid, Fracture, Shot, Cement Squeeze Record (Amount and Kind of Material Used)	Depth
4	3668-74	250 Gal. Mud Acid	
4	3643-50	250 Gal. Mud Acid	

TUBING RECORD Size 2 3/8 Set At 3660 Packer at _____ Liner Run Yes No

Date of First Production M Producing Method Flowing Pumping Gas Lift Other (explain) _____

Estimated Production Per 24 Hours	Oil	Gas	Water	Gas-Oil Ratio	Gravity
	85 Bbls	MCF	15 Bbls	CFPB	

METHOD OF COMPLETION Production Interval

Disposition of gas: Vented Open Hole Perforation
 Sold Other (Specify) _____
 Used on Lease Dually Completed Commingled

2114M L.M.A.
 2114M L.M.A.
 2114M L.M.A.
 2114M L.M.A.

15-065-22326-00-00

EMPHASIS OIL OPERATIONS
P. O. Box 506
Russell, KS 67665

DRILLERS LOG

OPERATOR: Douglas P. Meyer Oil Investments
135 W. 4th St.
Russell, KS 67665

CONTRACTOR: Emphasis Oil Operations
Box 506
Russell, KS 67665

LEASE: Griffith

WELL #1

LOCATION: C NW SE
Section 25-10S-23W
Graham County, Kansas

Log Total Depth: 3978'

Rotary Total Depth: 3980'

Commenced: 1/28/87

Casing: 8-5/8" @ 218' w/140 sks cement
4-1/2" @ 3979' w/400 sks cement

Elevation: 2342' K.B.

Completed: 2/3/87

Status: Oil Well

DEPTHS & FORMATIONS

(All measurements from K.B.)

Post rock	30'	Shale & Lime	3496'
Shale	95'	Lime & Shale	3764'
Sand & Shale	1846'	Lime	3890'
Anhydrite	1883'	Lime & Chert (R.T.D.)	3980'

RECEIVED
STATE CORPORATION COMMISSION
AUG 18 1988
08-18-1988
CONSERVATION DIVISION
Wichita, Kansas

STATE OF KANSAS)
 ss
COUNTY OF RUSSELL)

Kyle B. Branum, of Emphasis Oil Operations, states that the above and foregoing is a true and correct log of the above captioned well, to the best of his knowledge.

Kyle B. Branum
Kyle B. Branum

Subscribed and sworn to before me this 12th of February, 1987.
My Commission Expires: July 29, 1989.

PATRICIA L. SCHAWO
NOTARY PUBLIC
STATE OF KANSAS
MY APPT. EXPIRES 7/29/89

RECEIVED
STATE CORPORATION COMMISSION
Patricia L. Schawo, Notary Public
STATE CORPORATION COMMISSION

NOV 24 1987

APR 13 1988

CONSERVATION DIVISION
Wichita, Kansas

CONSERVATION DIVISION
Wichita, Kansas

ROYAL ACID, INC.

Russell
913-483-4939

P. O. Box 629

N^o 3057

Russell, Kansas 67665

IS-065-22326-00-00

Station Russell	Customer Order or P. O. Number	Date 3-7	19 87
Owner	Lease Griffith	Well # #1	County Graham
Location	Township 25	Range 10s	Section 23w
	Formation KC	Contractor	

	WELL DATA				PERFORATIONS	TREATMENT
	SIZE	WEIGHT	DEPTH	VOLUME	SHOTS FT.	Max. Pressure
TUBING	2 3/4				From 3608 to 14	Min. Pressure
CASING	4 1/2				From 3642 to 50	Avg. Inj. Rate
ANNULUS					From to	Avg. TrT Pressure
OPEN HOLE					From to	Total Fluid Pumped
					From to	Bbls.

To Royal Acid, Inc.
You are hereby requested to rent acidizing equipment to do work as listed.

Charge To **Douglas P Meyer**
Street **135 W. 4th**
City **Russell** State **Ks. 67665**

The above order was done to satisfaction and supervision of owner, agent, or contractor.

EQUIPMENT AND PERSONNEL

Russ	T-15

Steve Service Engineer

TREATMENT INSTRUCTIONS

The signee hereby requests ROYAL ACID, INC., to furnish equipment, servicemen, and materials for servicing the above well under his supervision as follows: **Treat 3608-14 w/ 250 gal 28% Nov-E**

Break Down 3642-50 w/ 250 gal 28% mud also

A consideration, the above named (well owner or contractor) agrees to: (a) to pay you in accordance with your current price schedule; (b) Royal Acid, Inc., shall not be liable for damage to property of well owner and/or customer unless caused by its willful negligence this provision applying but not limited to subsurface damage and surface damage arising from subsurface damage. Well owner and/or customer shall be responsible for and secure Royal Acid, Inc., against any liability for reservoir loss or damage, or property damage arising from a well blowout, unless such loss or damage is caused by willful negligence of Royal Acid, Inc. If equipment or instruments of Royal Acid, Inc., are lost or damaged at the well, well owner and/or customer shall either recover the same or pay for such equipment or instruments unless, however, such loss or damage is caused by the negligence of Royal Acid, Inc.; (c) that you make no guarantee of the effectiveness of the materials to be used or the results of treatment; and (d) that you will not be bound by any representation or agreement not herein contained. It is understood you will pay wages (and payroll taxes and withholding thereon) and comply with workman's compensation statutes applicable to servicemen you furnish.

Douglas P Meyer
Customer's Signature

TREATMENT LOG

TIME A.M./P.M.	PRESSURE		TOTAL FLUID PUMPED	FLUID IN FORMATION	PUMPED PER TIME PERIOD	INJECTION RATE	EXPLANATION
	TBG	CSG					
2:25	0		0		0	38PPM	START ACID
2:27	0		6		6	"	START FLUSH
2:31	200		14		8	-	Load + Pressure to 200
2:45	400						Pressure to 400
3:05	600						Pressure to 600
3:20	600		1/2	1/2	1/2	1/4	ACID FEED @ 1/4 @ 600
3:35	3000		22	8	7 1/2	1/4	Flush to 2000 over TSTP 200
4:00			5		5		Break Down 3642-50 Drop 5000 to spot Set Packer to treat
4:03			4		0		START ACID
4:04			6		1		START FLUSH
4:04	200		13 1/2		7 1/2		Load + Press to 200
			14		1/2		Press to 500
4:24						1/4	ACTO FEED @ 1/4 @ 600
	600		25		1	1/2	Inj to 1/2 @ 600
	600		14	4	3	3/4	Inj to 3/4 @ 600
			20	6	2	VAC	Press drop to 0 Com Up Flush out

Price Reference	Materials Used	Amount	Unit Price	Total Cost
10-1	Pump Charge	1		425.00
10-17	28% Nov-E	250 gal	.95	232.50
10-16	28% Mud ACID	250 gal	1.22	305.00
	Inhibitor	2 gal	20.00	40.00

RECEIVED
STATE CORPORATION COMMISSION

AUG 18 1988
08-18-1988
CONSERVATION DIVISION
Wichita, Kansas

RECEIVED
STATE CORPORATION COMMISSION

MAY 02 1988

05-02-1988

- New Producer
- Old Producer
- Old Producer - New Zones
- New SWD or Injection
- Old SWD or Injection

Terms: **15-2** discount will be allowed if paid in 30 days from invoice date.

CONSERVATION DIVISION
Wichita, Kansas

Sub-Total	1007.50
Tax	
Total	

Quivira Energy Corporation

7074 South Elm Street, Littleton, CO 80122
TELEPHONE (303) 771-9626

Wesley W. Lilley, Ph.D.
President-Geologist

15-065-22326-00-00
GEOLOGIST'S REPORT

General Information

STATUS: Waiting on Completion Tools

OPERATOR: Douglas P. Meyer Oil Investments

WELL NAME: Griffith #1

LOCATION: 330' FNL & 500' FWL of SE/4 - Section 25 - T.10S. - R.23W.
Graham County, Kansas

ELEVATIONS: G.L. = 2337' K.B. = 2342'

CONTRACTOR: Emphasis Oil Operations, Rig 6

COMMENCED: January 27, 1987

COMPLETED: February 4, 1987

CASING: Surface - 8 5/8" @ 222'
Production - 4 1/2" @ 3979'

TOTAL DEPTH: R.T.D. = 3980' L.T.D. = 3979'

DRILL STEM TESTS: Superior Testers Enterprises, Inc. (3 conventional tests)

DST 1 3610-3650 (LKC "A" & "B" zones)

DST 2 3660-3720 (LKC "D", "E", "F", & "G" zones)

DST 3 3725-3790 (LKC "H", "I", & "J" zones)

GAS DETECTOR: None

ELECTRIC LOGS: Dresser Atlas

Laterolog-Gamma Ray-Neutron-Compensated Density-Caliper (180-3978)

MISCELLANEOUS REMARKS: None

RECEIVED
STATE CORPORATION COMMISSION
08-18-1988
AUG 18 1988

CONSERVATION DIVISION
Wichita, Kansas

RECEIVED
STATE CORPORATION COMMISSION

MAY 02 1988
05-02-1988
CONSERVATION DIVISION
Wichita, Kansas

15-065-22326-00-00

DAILY REPORT

LOCATION: 330'FWL & 500'FWL of SE/4 - 25 - 10S. - 23W. COUNTY: Graham STATE: Kansas
 OPERATOR: Douglas P. Meyer Oil Investments CONTRACTOR: Emphasis Oil Operations, Rig 6
 WELL: Griffith #1 GEOLOGIST: Wes Lilley ELEVATIONS: G.L.=2337' K.B.=2342'

DATE	DEPTH	FORMATION TOPS
1/27/87	MIRU	Sample Tops:
1/28/87	223 Spud 12 1/4" hole @ 9P.M. Drilled to 223' K.B. RN 6 jts. new 8 5/8" surf. csg. Set at 222'. Cmtd w/ 140 sxs Class "A", 3% CaCl ₂ , 2% gel, 1/4 # Floseal by Sun. Plg ^d wn 7:45A.M. 1/28/87. Did circ.	Heebner 3571 (-1229) Toronto 3595 (-1253) L&C 3606 (-1264) BKC 3628 (-1486) Marmaton 3928 (-1586) R.T.D. 3980 (-1638)
1/29/87	1879 Drilling	Log Tops:
1/30/87	2929 Drilling	Anhydrite 1841 (+501) B/Anhydrite 1864 (+458)
1/31/87	3496 Drilling	Heebner 3570 (-1228) Toronto 3594 (-1252) L&C 3606 (-1264) BKC 3834 (-1492) Marmaton 3928 (-1586) L.T.D. 3979 (-1637)
2/1/87	3650 Drilling DST 1 3610-3650 ("A" & "B" zones) 10 - 20 - 45 - 45 Rec. 330 GIP 30 HG&GCM (8%G, 37%O, 30%W, 24%W) 210 GCMO (10%G, 70%O, 8%W, 12%W) 30 OGW (15%O, 30%W, 55%W)	
	IHP 63-65 FFP 74-117 ISIP 907 FSIP 875 IHP 1939 FHP 1918	
2/2/87	3769 Working on mud pump DST 2 3660-3720 ("D", "E", "F", & "G") 30 - 30 - 30 - 30 Rec. 5 mud w/ a few oil spots IHP 63-63 FFP 63-63 ISIP 85 FSIP 74 IHP 1993 FHP 1961	
2/3/87	3893 Drilling DST 3 3725-3790 ("H", "I", & "J") 30 - 30 - 30 - 30 Rec. 10 Mud	IHP 63-63 FFP 63-63 ISIP 95 FSIP 163-0 IHP 2046 FFP 2004
2/4/87	3980 Setting 4 1/2" production string	STATE CORPORATION COMMISSION

RECEIVED
STATE CORPORATION COMMISSION

AUG 18 1988
08-18-1988
CONSERVATION DIVISION
Wichita, Kansas

MAY 02 1989

CONSERVATION DIVISION
Wichita, Kansas

15-065-22326-00-00

SAMPLE DESCRIPTIONS

See attached geologic drilling time and lithology descriptions.

DEVIATION SURVEYS

DEPTH	DEGREE	DATE
223'	0°	1/28/87
952'	1/2°	1/28/87
3650'	3/4°	1/31/87
3980'	3/4°	2/3/87

RECEIVED
STATE CORPORATION COMMISSION

AUG 18 1988
08-18-1988
CONSERVATION DIVISION
Wichita, Kansas

Pipe strapped at the following depth:
3650' - strap .92 ft. long to board.

BIT RECORD

Bit #	Size	Make	Type	Depth Out	Total Feet	Hours
1	12 1/4"	Smith	X3A	223'	223'	
2	7 7/8"	Varel	L126	952'	729'	
3	7 7/8"	Varel	V537C RR	3980'	3028'	

MUD PROPERTIES

DATE	DEPTH/TIME	MW	VIS	FILTRATE	LCM	CHLORIDES
1/31/87	3555 (9 AM)	9.8	47	12.8	1#	24,000
2/1/87	3673 (9 AM)	9.8	42	8.8	1#	26,000
2/2/87	3790 (10:15 AM)	9.8	54	9.0	1/2#	24,000
2/3/87	3957 (12:30 PM)	10.0	44	10.4	1/4#	20,000

GEOLOGICAL REMARKS AND RECOMMENDATIONS

The Griffith #1 was supervised from 3500' to total depth.

Based upon the sample shows, structural position relative to the plugged out off-set producers, electric logs and the success of DST 1, it was decided that a completion attempt would be made in the Lansing "A" and "B" zones. It is recommended that the "K" zone be considered a potential zone to be perforated prior to abandonment based upon the strength of the sample shows and the odd electric log readings over this zone. All other shows are believed to be of no commercial interest.

It is recommended that the Lansing "B" zone be perforated from 3642 to 3650 and that the Lansing "A" zone be perforated from 3608 to 3614. I would also recommend that each zone be broken down separately because of the large difference in lithologic character for each of these zones.

Submitted by:

Wesley W. Lilley
Wesley W. Lilley

RECEIVED
STATE CORPORATION COMMISSION

MAY 02 1988
~~05-02-1988~~
CONSERVATION DIVISION
Wichita, Kansas