

Give All Information Completely
Make Required Affidavit
Mail or Deliver Report to:
Conservation Division
State Corporation Commission
212 No. Market
Wichita, Kansas 67202

WELL PLUGGING RECORD

ELLIS County. Sec. 32 Twp. 11S Rge. 20 (E)(W)
Location as "NE/CNW/WSW" or footage from lines APP. S/2 S/2 NW
Lease Owner PETROLEUM, INC.,
Lease Name HUCK 'D' Well No. 1
Office Address ROUTE 2, GREAT BEND, KANSAS
Character of Well (completed as Oil, Gas or Dry Hole) DRY HOLE
Date well completed JULY 26 1971
Application for plugging filed JULY 26 1971
Application for plugging approved JULY 26 1971
Plugging commenced JULY 26 1971
Plugging completed JULY 26 1971
Reason for abandonment of well or producing formation NO COMMERCIAL ZONE

If a producing well is abandoned, date of last production NONE 19
Was permission obtained from the Conservation Division or its agents before plugging was commenced? YES

Name of Conservation Agent who supervised plugging of this well LEO F. MASSEY
Producing formation _____ Depth to top _____ Bottom _____ Total Depth of Well 3585 Feet
Show depth and thickness of all water, oil and gas formations.

OIL, GAS OR WATER RECORDS

CASING RECORD

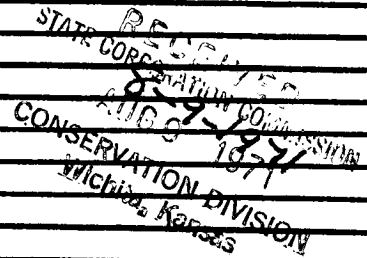
FORMATION	CONTENT	FROM	TO	SIZE	PUT IN	PULLED OUT
				8-5/8"	216'	NONE

Describe in detail the manner in which the well was plugged, indicating where the mud fluid was placed and the method or methods used in introducing it into the hole. If cement or other plugs were used, state the character of same and depth placed, from _____ feet to _____ feet for each plug set.

HEAVY MUD TO 720', WOODEN PLUG, PLACED 70 SACKS CEMENT ON TOP OF PLUG.

HEAVY MUD TO 210', WOODEN PLUG, PLACED 20 SACKS CEMENT ON TOP OF PLUG.

HEAVY MUD TO 40', WOODEN PLUG, PLACED 10 SACKS CEMENT ON TOP OF PLUG TO BASE OF WELL CELLAR.



(If additional description is necessary, use BACK of this sheet)
Name of Plugging Contractor GARVEY DRILLING COMPANY
Address ROUTE 2, GREAT BEND, KANSAS

STATE OF KANSAS, COUNTY OF BARTON, ss,

MONTE CHADD (employee of owner) or (owner or operator) of the above-described well, being first duly sworn An oath, says: That I have knowledge of the facts, statements, and matters hereto contained and the log of the above-described well as filed and that the same are true and correct. So help me God. MONTE CHADD, DIST. PROD. SUPT.

(Signature) *Monte Chadd*
R.R. #2, GREAT BEND, KANSAS 67530
(Address)

Subscribed and sworn to before me this 4 day of AUGUST, 1971



My commission expires MAY 28, 1973 Notary Public.

WELL LOG

COMPANY Petroleum, Inc.

SEC. 32 T. 11S R. 20W

FARM Huck "D" NO. 1

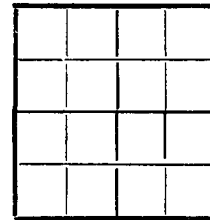
LOC. App. S/2 S/2 NW

TOTAL DEPTH 3585'

COUNTY Ellis, Kansas

COMM. 7-21-71 COMP. 7-26-71

CONTRACTOR Garvey Drilling Company



CASING
8 5/8" @216' w/175sx

ELEVATION 2232' KB

PRODUCTION D & A

FIGURES INDICATE BOTTOM OF FORMATIONS

- 160' Sand & Shale
- 1015' Sand & Shale
- 1650' Sand w/Shale
- 1655' Sand & Shale
- 1699' Anhydrite
- 1800' Shale
- 2340' Shale w/Lime
- 2550' Lime & Shale
- 3335' Lime w/Shale & Sand
- 3475' Lime & Shale
- 3585' Lime w/Shale
- 3585' RTD

RECEIVED
STATE CORPORATION COMMISSION
AUG 9 1971
CONSERVATION DIVISION
Wichita, Kansas

State of Kansas }
County of Barton } SS

I, Charlene Marker of Garvey Drilling Company

upon oath state the above and foregoing is a true and correct copy of the log of the Huck "D" #1 well.

Charlene Marker

Subscribed and sworn to before me this 2nd day of August 19 71

My Commission Expires: July 8, 1974

George A. D. [Signature]
NOTARY PUBLIC