

TYPE

**NOTICE OF INTENTION TO DRILL**

C-1

**TO BE FILED WITH THE STATE CORPORATION COMMISSION  
PRIOR TO COMMENCEMENT OF WELL**

API Number

15-167-20,926-0000  
(For office use only)

1. Operator Shields Oil Producers, Inc.

Starting Date 7-9-76

Address Shields Bldg., Russell, Kansas 67665 County Russell

2. Contractor Shields Drlg. Co., Inc.

Sec 27 Twp 11 S Rge 15 <sup>R</sup>/<sub>W</sub>

Address Shields Bldg., Russell, Kansas 67665

Spot Location N/2 NE SE

3. Type of Equipment: Rotary  Cable Tool \_\_\_\_\_

Nearest Lease Line 330 ft.

4. Well to be Drilled for: Oil  Gas \_\_\_\_\_

Lease Name Eulert C''

Disposal \_\_\_\_\_ Input \_\_\_\_\_ Other \_\_\_\_\_

5. Depth of Deepest Fresh Water within 1 mile 125 ft.

Well No. 3

6. Depth of Municipal Water Well within 3 miles None ft.

7. Depth to Protect all Fresh Water 150 ft.

8. Amount of Surface Casing to be set 250 ft.

Est. Total Depth 3300 ft.

9. Alternate No. 1 \_\_\_\_\_ No. 2  \_\_\_\_\_

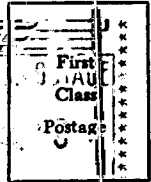
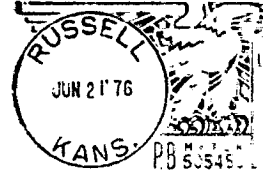
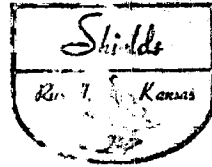
REMARKS:

OPERATOR STATES THAT HE WILL COMPLY WITH K. S. A. 55-128

Signature of Operator

*Shields Oil Producers, Inc.*  
*M. H. Hutto* *[Signature]*





**State Corporation Commission of Kansas**  
**Conservation Division**  
**P. O. Box 17027**  
**Wichita, Kansas 67217**

RECEIVED  
 STATE CORPORATION COMMISSION  
 6-22-1976  
 JUN 22 1976

CONSERVATION DIVISION  
 Wichita, Kansas

(IF PREFERRED, MAIL IN ENVELOPE)