

15-065-30162-00-00

Form CP-4

PR

STATE OF KANSAS  
STATE CORPORATION COMMISSION

Give All Information Completely  
Make Required Affidavit  
Mail or Deliver Report to:  
Conservation Division  
State Corporation Commission  
211 No. Broadway  
Wichita, Kansas

WELL PLUGGING RECORD

Graham County, Sec. 10 Twp. 10S Rge. (E) 23 (W)

Location as "NE/CNW/SW" or footage from lines NE NE SW

Lease Owner Imperial Oil Company

Lease Name Johnson Well No. 2

Office Address 780 Fourth National Bldg., Wichita, Kansas

Character of Well (completed as Oil, Gas or Dry Hole) Dry Hole

Date well completed October 12 19 66

Application for plugging filed October 12 19 66

Application for plugging approved October 12 19 66

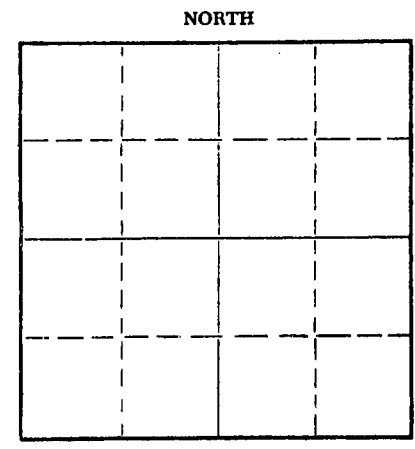
Plugging commenced October 12 19 66

Plugging completed October 12 19 66

Reason for abandonment of well or producing formation No commercial quantities of oil found.

If a producing well is abandoned, date of last production 19

Was permission obtained from the Conservation Division or its agents before plugging was commenced? Yes.



Locate well correctly on above Section Plat

Name of Conservation Agent who supervised plugging of this well W. L. Nichols, Moreland, Kansas

Producing formation \_\_\_\_\_ Depth to top \_\_\_\_\_ Bottom \_\_\_\_\_ Total Depth of Well 3900 Feet

Show depth and thickness of all water, oil and gas formations.

OIL, GAS OR WATER RECORDS

CASING RECORD

FORMATION	CONTENT	FROM	TO	SIZE	PUT IN	PULLED OUT
	Surface casing -	8 5/8"	at 206 ft.			Not pulled

Describe in detail the manner in which the well was plugged, indicating where the mud fluid was placed and the method or methods used in introducing it into the hole. If cement or other plugs were used, state the character of same and depth placed, from 3900 feet to \_\_\_\_\_ feet for each plug set.

Set first plug at 600 ft. with 20 sacks of cement.  
Set second plug at 200 ft. with 20 sacks of cement.  
Set third plug at 40 ft. with 10 sacks of cement.

RECEIVED  
CONSERVATION COMMISSION  
OCT 20 1966  
10-29-1966  
CONSERVATION DIVISION  
Wichita, Kansas

(If additional description is necessary, use BACK of this sheet)

Name of Plugging Contractor Imperial Oil Company  
Address 780 Fourth National Bank Bldg., 110 No. Market, Wichita, Kansas

STATE OF KANSAS, COUNTY OF SEDGWICK, ss.  
William A. Sladek, III (employee of owner) or (~~owner~~) of the above-described

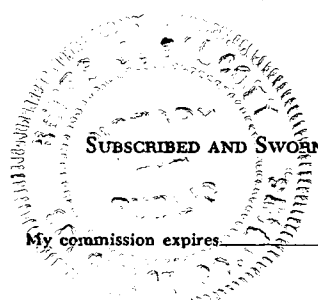
well, being first duly sworn on oath, says: That I have knowledge of the facts, statements, and matters herein contained and the log of the above-described well as filed and that the same are true and correct. So help me God.

(Signature) William A. Sladek  
William A. Sladek, III  
780 Fourth National Bank Bldg., Wichita, Ks.  
(Address)

SUBSCRIBED AND SWORN to before me this 19th day of October, 19 66

My commission expires July 5, 1970

Bette J. Silcott  
Bette J. Silcott Notary Public.



DRILLER'S LOG

15-065-30162-00-00A

Imperial Oil Company  
780 Fourth National Building  
Wichita, Kansas 67202

Johnson No. 2  
NE NE SW Sec. 10-10S-23W  
Graham County, Kansas

Total Depth: 3900 ft.

Elevation: 2398 K.B.

Commenced: 10-3-66

Completed: 10-12-66  
Dry Hole

Contractor: Imperial Oil Company - Rig #2

Casing Record: Set 8 5/8" surface casing at 206 ft. with 135 sacks of cement.

Figures at bottom of formations:

Electric Log Tops:

207'	Sand-shale		
820'	Shale-shells	Heebner Shale	3653 (-1255)
1480'	Shale-sand	Toronto Limestone	3676 (-1278)
1698'	Dakota Sand	Lansing-Kansas City	3688 (-1290)
1720'	Shale-Red bed	Rotary Total Depth	3900 (-1502)
1946'	Shale		
1984'	Anhydrite		
1995'	Shale-shells		
2245'	Shale-lime		
2490'	Shale		
2565'	Shale-lime		
2760'	Lime-shale		
3080'	Shale-lime		
3154'	Lime-shale		
3470'	Shale-lime		
3555'	Lime-shale		
3737'	Lime		
3763'	Lime-shale		
3768'	Lime		
3835'	Lime-shale		
3870'	Lime		
3898'	Lime-shale		
3900'	Lime		
<u>3900'</u>	<u>Rotary Total Depth</u>		

RECEIVED  
STATE CORPORATION COMMISSION  
OCT 20 1966  
10-20-1966  
CONSERVATION DIVISION  
Wichita, Kansas

We hereby certify this to be a correct and accurate log of the above described well, as shown on the daily drilling reports.

IMPERIAL OIL COMPANY

By William A. Seadek

Subscribed and sworn to before me this \_\_\_\_\_ day of October, 1966.

My Commission Expires:  
July 5, 1970

Bette J. Silcott  
Bette J. Silcott

ROBERT C. LEWELLYN

9P

*Petroleum Geologist*

Phone MU 2-0881  
Area Code 316  
845 North Battin  
Wichita, Kansas

GEOLOGICAL REPORT

15-065-30162-00-00 IMPERIAL OIL COMPANY

NO. 2 JOHNSON

NE NE SW SEC. 10-10S-23W

GRAHAM COUNTY, KANSAS

RECEIVED  
STATE CORPORATION COMMISSION  
OCT 20 1966  
10-20-1966  
CONSERVATION DIVISION  
Wichita, Kansas

GENERAL INFORMATION:

DRILLING CONTRACTOR: Company Tools  
SPUDDED: October 3, 1966 DRILLING COMPLETED: Oct. 12, 1966  
CASING: 8 5/8" @ 206/135 sx  
DRILLING TIME: 1 foot by Geolograph 3500' to RTD  
SAMPLES: 5 foot samples from 3600' to RTD  
(Delivered to Kansas Geological Society)  
ELECTRICAL SURVEYS: Great Guns, R. A. Guard - Sonic  
DRILL STEM TESTS: 7 by Byron Jackson, Inc.  
DRILLING MUD: Magcobar, Great Bend  
DIRECTIONS: Hill City, Kansas, 11 S. on HW 183, 1/2 W.

ELEVATIONS: 2398 KB 2395 DF 2393 GL

<u>FORMATION TOPS:</u>	<u>Sample</u>	<u>Electric Log</u>
Heebner Shale	3649 (-1251)	3653 (-1255)
Toronto Limestone	3671 (-1273)	3676 (-1278)
Lansing-Kansas City	3683 (-1285)	3688 (-1290)✓
ROTARY TOTAL DEPTH	3900 (-1502)	3900 (-1502)

LITHOLOGIC DESCRIPTION OF ZONES OF INTEREST CARRYING POROSITY AND/OR SHOWS OF OIL: (Corrected to Electric log depths. Refer to attached sample log for complete lithologic description of all formations.)

TOPEKA ZONES:

3598-3610 Limestone, buff and tan, some mottled, finely crystalline and oolitic, some poor to fair pinpoint, oolitic, and interoolitic porosity, no show of oil.

15-065-30162-00-00

Imperial Oil Company - No. 2 Johnson

-2-

3617-3640 Limestone, cream to buff, finely crystalline, some chalky, fossiliferous in part, poor to fair pinpoint and scattered vugular porosity, 90% barren, rare trace of very light spotted stain, no odor, no free oil.

LANSING-KANSAS CITY ZONES:

- 3689-3893 Limestone, cream to buff, fine to medium crystalline, (Top) some dense, poor to fair scattered pinpoint and vugular porosity with fair spotted stain, good show free oil, some fossiliferous (EL 7½ - 8% por. - 50 - 60% SW). This zone was open in drill stem test No. 1.
- 3723-3726 Limestone, cream to buff, dense and mealy, lots of (30) orange to tan to varicolored chert, no visible porosity and no show of oil (EL 8½% por. - 52% SW).
- 3732-3735 Limestone, buff, dense to finely crystalline, fair pin- (50) point and scattered vugular porosity, good spotted stain in porosity, good show free oil (EL 8% por - 41% SW). This zone was open in drill stem test No. 2.
- 3764-3770 Limestone, cream to buff, dense to finely crystalline, (70) some poor to fair pinpoint and scattered vugular porosity with fair spotted stain, trace saturation, fair show free oil, no odor (EL - tight). This zone was open in drill stem test No. 3.
- 3775-3780 Limestone, cream, finely crystalline and fossiliferous, (90) fair interfossiliferous and scattered vugular porosity, fair spotted stain, trace free oil, no odor, some partially barren scattered pinpoint porosity (EL - wet).
- 3788-3792 Limestone, cream to buff, fine to medium crystalline, & fossiliferous in part, fair to good vugular and inter-  
3794-3796 fossil porosity, good spotted to saturated stain, fair (100) show free oil, no odor. (EL 8½ - 17% por. - 90% SW). The above zones were open in drill stem test No. 4.
- 3827-3830 Limestone, cream, dense and chalky, some buff dense, (140) trace gray mottled dense, no visible porosity, no show of oil. (EL 7% por - 51% SW)

- 3849-3851 Limestone, buff, dense to finely crystalline, trace  
(160) finely crystalline with poor pinpoint and scattered  
vugular porosity, trace light spotted stain, slight  
show of free oil, considerable tan, opaque chert  
(EL 8½% por. - 54% SW). This zone was open in drill  
stem test No. 5.
- 3863-3875 Limestone, cream to buff, fine to medium crystalline,  
(180) fair to good pinpoint and scattered vugular porosity,  
good saturated stain, some spotted stain, good show  
free oil, slightly fossiliferous in part (EL - tight).  
This zone was open in drill stem test No. 6.
- 3882-3893 Limestone, cream to buff, dense to finely crystalline,  
(200) rare fragment of finely crystalline with poor pin-  
point porosity, light spotted stain, very slight show  
of free oil (EL - tight).
- 3894-3900 Limestone, buff, dense and chalky, rare fragment  
(210) finely crystalline with poor pinpoint porosity, part  
barren, part with very light spotted stain, no free oil  
(EL indicates some porosity - Guard not recording this  
near bottom). The above two zones were open in drill  
stem test No. 7.
- 3900 ROTARY TOTAL DEPTH

DRILL STEM TESTS:

Note: Drillers measurements appear to be 5 feet higher than  
Electric log measurements. Test depths should be  
corrected downhole 5 feet to correlate with Electric log.

Test No. 1 3677-3698/open 30 min., shut 30 min., open 30 min.,  
Oct. 8, 1966 shut 30 min., very weak blow throughout; recovered  
45 feet of very slightly oil cut mud.

IFP	19#	FFP	28#
ISIP	713#	FSIP	674#

Test No. 2 3721-3737/open 30 min., shut 30 min., open 30 min.,  
Oct. 9, 1966 shut 30 min.; very weak blow throughout test;  
recovered 40 feet of slightly oil specked mud.

IFP	28#	FFP	28#
ISIP	626#	FSIP	529#

Test No. 3 3748-3763/open 30 min., shut 30 min., open 30 min.,  
Oct. 10, 1966 shut 30 min.; very weak blow, died in 5 min.;  
recovered 10 feet of mud.

IFP	0#	FFP	0#
ISIP	0#	FSIP	0#

Test No. 4 3762-3786/open 30 min., shut 30 min., open 30 min.,  
Oct. 10, 1966 shut 30 min.; weak blow throughout; recovered  
30 feet of mud with a few specks of oil.

IFP	0#	FFP	0#
ISIP	590#	FSIP	590#

Test No. 5 3831-3850/open 30 min., shut 30 min., open 30 min.,  
Oct. 10, 1966 shut 30 min.; very weak blow, dead in 8 min.;  
recovered 5 feet of mud.

IFP	0#	FFP	0#
ISIP	0#	FSIP	0#

Test No. 6 3848-3870/open 30 min.; shut 30 min., open 30 min.,  
Oct. 10, 1966 shut 30 min.; weak blow, dead in 15 min.;  
recovered 30 feet of mud.

IFP	28#	FFP	28#
ISIP	976#	FSIP	810#

Test No. 7 3867-3900/open 30 min., shut 30 min., open 90 min.,  
Oct. 10, 1966 shut 30 min.; very weak blow throughout;  
recovered 100 feet of watery mud.

IFP	19#	FFP	48#
ISIP	1113#	FSIP	1104#

RECOMMENDATIONS:

Sample examination, drill stem testing and electrical logging re-  
vealed no zones of possible commercial production of oil or gas.  
Therefore, it was recommended that this test be plugged and abandoned  
at a total depth of 3900 feet.

RCL/mlb  
encl.

---

Robert C. Lewellyn,  
Petroleum Geologist.

15-065-30162-00-00

Imperial Oil Company - #2 Johnson

One foot drilling time:

3500-3520	4-3-3-2-2	5-5-4-5-7	9-7-9-11-8	5-6-4-5-7	
40	6-7-4-5-4	3-3-2-3-7	8-7-7-4-6	6-8-7-3-3	
60	3-4-3-3-3	3-3-4-3-4	3-5-4-3-3	2- -1-1-1	Trip @ 3550
80	3-3-2-3-1	1-1-1-2-4	6-5-5-5-5	5-4-3-4-3	
3600	4-5-5-5-7	6-5-5-4-8	9-8-7-3-4	3-1-2-2-2	
3600-3620	3-3-4-3-3	4-7-7-8-6	3-2-3-2-1	$\frac{1}{2}$ - $\frac{1}{2}$ - $\frac{1}{2}$ - $\frac{1}{2}$ - $\frac{1}{2}$	
40	1-2-2-1-1	2-2-1-3-4	3-2-3-3-2	3-3-3-1-2	
60	3-3-3-3-3	3-4-4-4-2	2-3-5-6-6	7-8-5-2-3	
80	3-3-4-3-4	3-4-3-4-3	4-5-7-6-7	7-7-10-7-4	CFS @ 3676
3700	4-5-4-6-9	8-7-6-7-8	8-8-10-11-9	9-8-10-6-8	CFS @ 3698
3700-3720	10-11-11-12-10	11-11-12-9-10	5-4-4-4-4	3-6-10-9-11	
40	12-10-12-5-3	3-8-6-5-7	7-7-8-6-7	8-7-7-7-6	CFS @ 3723
					CFS & Trip @ 3737
60	9-8-9-8-8	-5-7-6-6	5-4-4-9-8	5-3-3-4-4	
80	5-9-9-6-6	5-4-4-5-5	6-4-2-3-2	3-5-5-4-2	CFS @ 3763 & 3778
3800	4-5-5-3-1	2-6-9-7-5	6-7-8-7-9	8-7-7-7-6	CFS @ 3786
3800-3820	7-7-7-7-7	7-7-5-3-5	7-7-4-3-4	3-3-4-3-4	
40	5-8-8-8-8	7-7-8-7-8	8-8-8-5-8	7-5-4-5-4	CFS @ 3835
60	4-8-7-5-5	10-8-9-8-8	3-3-3-3-3	4-3-3-3-3	CFS @ 3850
80	1-7-7-8-7	8-7-8-7-5	5-4-4-4-4	4-5-5-5-6	CFS @ 3870
3900	6-7-10-9-7	8-9-6-7-5	5-6-8-7-9	7-8-9-8-10	CFS @ 3888 & 3900
RTD					

STATE **KANSAS**  
 COUNTY **GRAHAM**  
 BLOCK **10**  
 SEC. **10**

COMPANY **IMPERIAL OIL CO.**  
 FARM **JOHNSON**  
 SURVEY **2**

T. **10 S** R. **23 W**  
 NE NE SW

ALTITUDE **2398 KB**  
 PRODUCTION **D & A**

CONTRACTOR **Company Tools**  
 COMMENCED **10-3-66**  
 COMPLETED **10-12-66**

REMARKS **Drilling measurements appear to be approx. 5' higher than log meas.**  
**Robert C. Jewell - Geologist**

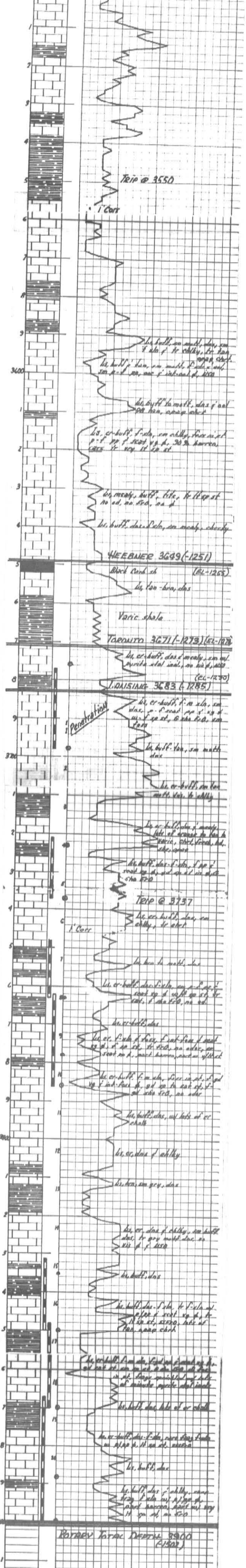
CASING RECORD

8 3/4" @ 206 RPM / 135 ft

SHOT	QUARTS	BETWEEN

TIME RATE SCALE: 1/10" = 1 MINUTES

450 ROSS-MARTIN CO. OKLAHOMA PRINTED IN U.S.A.



DRILL STEM TESTS

- #1 3677-3693/30-30-30-30  
 Very soft blue claystone; Rec 45' 15000  
 1500 2130; 27150 to 2800; FSIP 6200
- #2 3721-3737/30-30-30-30  
 Very soft blue claystone; Rec 40' 150  
 1600 mud; 1570 6360; CP 280  
 to 2800; FSIP 6200
- #3 3748-3763/30-30-30-30  
 Very soft blue claystone; Rec 10' mud;  
 1510 00; CP 00; FSIP 00
- #4 3762-3786/30-30-30-30  
 Very soft blue claystone; Rec 20' mud; 1510  
 1510 5900; CP 00; FSIP 6200
- #5 3831-3850/30-30-30-30  
 Very soft blue claystone; Rec 5' mud; 1510 00  
 CP 00; FSIP 00
- #6 3848-3870/30-30-30-30  
 Very soft blue claystone; Rec 30' mud; 1510  
 5760; CP 280 to 280; FSIP 6200
- #7 3862-3900/30-30-30-30  
 Very soft blue claystone; Rec 100' mud;  
 1510 1510 1100; CP 100  
 to 400; FSIP 1100