



Operator Name: CEP Mid-Continent LLC Lease Name: Corn Well #: 1-32  
 Sec. 32 Twp. 33 S. R. 16  East  West County: Montgomery

**INSTRUCTIONS:** Show important tops and base of formations penetrated. Detail all cores. Report all final copies of drill stems tests giving interval tested, time tool open and closed, flowing and shut-in pressures, whether shut-in pressure reached static level, hydrostatic pressures, bottom hole temperature, fluid recovery, and flow rates if gas to surface test, along with final chart(s). Attach extra sheet if more space is needed. Attach copy of all Electric Wireline Logs surveyed. Attach final geological well site report.

Drill Stem Tests Taken <input type="checkbox"/> Yes <input type="checkbox"/> No <i>(Attach Additional Sheets)</i>  Samples Sent to Geological Survey <input type="checkbox"/> Yes <input type="checkbox"/> No  Cores Taken <input type="checkbox"/> Yes <input type="checkbox"/> No Electric Log Run <input type="checkbox"/> Yes <input type="checkbox"/> No <i>(Submit Copy)</i>  List All E. Logs Run:	<input checked="" type="checkbox"/> Log Formation (Top), Depth and Datum <input type="checkbox"/> Sample  Name Top Datum  Mineral 819.5' -24.5'  <div style="text-align: center;"> <b>RECEIVED</b>  <b>KANSAS CORPORATION COMMISSION</b>   <b>DEC 08 2008</b> </div>
--	--

CASING RECORD <input type="checkbox"/> New <input type="checkbox"/> Used						CONSERVATION DIVISION WICHITA, KS	
Report all strings set-conductor, surface, intermediate, production, etc.							
Purpose of String	Size Hole Drilled	Size Casing Set (In O.D.)	Weight Lbs. / Ft.	Setting Depth	Type of Cement	# Sacks Used	Type and Percent Additives

ADDITIONAL CEMENTING / SQUEEZE RECORD				
Purpose:	Depth Top Bottom	Type of Cement	#Sacks Used	Type and Percent Additives
<input type="checkbox"/> Perforate <input type="checkbox"/> Protect Casing <input type="checkbox"/> Plug Back TD <input type="checkbox"/> Plug Off Zone				

Shots Per Foot	PERFORATION RECORD - Bridge Plugs Set/Type Specify Footage of Each Interval Perforated	Acid, Fracture, Shot, Cement Squeeze Record (Amount and Kind of Material Used)	Depth
4	Mineral	500 gal. 7.5% HCl, 6,620 gal. MavFoam C70,	819.5-821.5'
		95,000 SCF N2, 10,400# 16/30 Brady sand	

TUBING RECORD: Size: _____ Set At: _____ Packer At: _____		Liner Run: <input type="checkbox"/> Yes <input type="checkbox"/> No	
Date of First, Resumed Production, SWD or Enhr. 10-8-08		Producing Method: <input type="checkbox"/> Flowing <input checked="" type="checkbox"/> Pumping <input type="checkbox"/> Gas Lift <input type="checkbox"/> Other (Explain)	
Estimated Production Per 24 Hours	Oil Bbls. 0	Gas Mcf 9	Water Bbls. 18

DISPOSITION OF GAS: <input type="checkbox"/> Vented <input type="checkbox"/> Sold <input type="checkbox"/> Used on Lease <i>(If vented, Submit ACO-18.)</i>	METHOD OF COMPLETION: <input type="checkbox"/> Open Hole <input type="checkbox"/> Perf. <input type="checkbox"/> Dually Comp. <input type="checkbox"/> Commingled <input type="checkbox"/> Other (Specify) _____	PRODUCTION INTERVAL: _____ _____
---	--	--



**RECEIVED**  
SEP 29 2008  
By \_\_\_\_\_

# Invoice

DATE	INVOICE NO.
9/19/2008	9713

**BILL TO**  
CEP Mid-Continent LLC

**LOCATION**

Sec. 32, T33N, R16E  
Montgomery County, Kansas

**RECEIVED**  
MAIL TO  
KANSAS CORPORATION COMMISSION  
SEP 29 2008  
**DEC 08 2008**  
CONSERVATION DIVISION  
WICHITA, KS

Account #	Property	Amount	AFE	SV
11927332	150090	14411.05	440814722	R 9/108

**VENDOR #** 10827  
NSE 986 CEP 976 MCOS 985

IMMEDIATE OVERNITE

TERMS	WELL NAME
Net 30	CEP_Corn #1-32

ITEM	DESCRIPTION & UOM	QTY	RATE	AMOUNT
257	CL-57 (gal)	11	35.04	385.44T
2003	Mav-100 (lb)	300	11.04	3,312.00T
141	Breaker 503L (gal)	0.5	69.06	34.53T
142	GB-3 (lb)	1.5	4.71	7.07T
411	WF-1 (gal)	10.5	33.71	353.96T
4001	MAVCELL F	11	49.76	547.36T
582	Mavcide II	2	81.46	162.92T
303	Mavhib-3 (gal)	2	40.03	80.06T
5503	HCL 7.5% (gal)	500	0.97	485.00T
6800	N2 (scf/100)	1,100	2.04	2,244.00T
	Subtotal			7,612.34
Product	Product Discount		-31.00%	-2,359.83
7030	Sand 16/30 Brady (cwt)	25	16.01	400.25T
	Subtotal			400.25
10001	Equipment Mileage (Heavy) (per MI)	110	3.12	343.20
10010	Proppant Mileage (TN/MI)	500	1.25	625.00
13201	Acid Semi-Trailer (4 hr min) (per hr)	6	99.23	595.38
31020	Blender (Group) 11-20 BPM (unit)	1	915.71	915.71
21120	Minimum Fracc Pump (Group) 750 HHP (unit)	1	1,807.31	1,807.31
45010	Chemical Add Unit (CCAU) (unit)	1	737.10	737.10
47020	Sand Pumping Charge (cwt)	25	1.19	29.75
54100	Computer Control Van (unit)	1	2,268.00	2,268.00
56100	Mavfoam Pump Charge	1,807.31	0.10	180.73
56200	Mavfoam Blender Charge	915.71	0.10	91.57
56510	N2 Pump Chg (0-6000 PSI) (job)	1	1,814.40	1,814.40
57100	N2 Transport (hr)	6	85.05	510.30
	Subtotal			9,918.45
Service	Service Discount		-31.00%	-3,074.72
15900	Fuel surcharge	1	1,487.77	1,487.77
	Subtotal			1,487.77
	Sales Tax, Montgomery Cnty KS		7.55%	426.79

*Reviewed by*  
*Approved by*  
*Date Paid*  
*Check No.*

Remit payment to Maverick Stimulation Co., LLC  
88 Inverness Circle East, G-101 Englewood CO 80112

**Total** \$14,411.05





88 INVERNESS CIRCLE E. G-101  
 ENGLEWOOD, CO 80112  
 PH (303) 757-7789 FAX (303) 757-7610

Date: 19-Sep-08

Well Name:	Location:	Customer Rep:	Field Order #
CORN #1-32	SEC.32, T33S, R16E	DON STAFFORD	09713A
Stage:	Formation:	Treat Via:	Allowable Pressure Tbg Csg Well Type:
ST #3	MINERAL	CASING	4,000 GAS
County:	State:	Well Age:	PackerType: PackerDepth: Csg Size:
MONTGOMERY	KS	NEW	4.5
Type Of Service:	N2 FOAM FRAC	Csg Depth	Tbg Size: Tbg Depth: Liner Size:
Customer Name:	CEP MID-CONTINENT LLC	Liner Depth:	Liner Top: Liner Bot: Total Depth:
Address:	LARRY CASEY P.O. BOX 970 SKIATOOK OK 74070	Open Hole:	Csg Vol: BHT:
Remarks:	19 CP @ 69 DEG. 10,400 LBS. 16/30 BRADY 95,000 SCF N2 JOB PUMPED @ 15 BPM DOWNHOLE	819.5	821.5 8 8
			0
			0
			0
			0
			0

TIME	INJECTION RATE		PRESSURE		REMARKS	PROP (lbs)	FOAM/FLD (gls)	FLUID (bbls)
	FLUID	N2/CO2	STP	ANNULUS				
13:09	0.0	0	36		PRIME UP PRESS TEST TO = 4200 PSI	0	0	0.0
13:09	0.0	0	38		ST PUMP-IN	0	84	2.0
13:11	1.2	0	2221		BREAKDOWN @ 2497 PSI	0	0	0.0
13:11	1.4	0	2329		ST ACID	0	500	12.0
13:14	1.9	0	2499		ST FLUSH	0	949	22.6
13:18	0.0	0	3492		ACID BRK @ 3663 PSI	0	0	0.0
13:22	5.0	4859	2044		ST PAD	0	4,620	31.8
13:29	4.9	9291	2289		ST .25# 16/30 BRADY	500	2,000	14.3
13:32	13.0	0	2460		ST FLUSH	0	546	13.0
13:33	14.7	0	1885		ST OVERFLUSH	0	336	8.0
13:34	0.1	0	764		CUT FLUID - ISIP = 772 PSI	0	0	0.0
13:39	0.0	0	720		5 MIN = 720 PSI	0	0	0.0
13:44	0.0	0	700		10 MIN = 700 PSI	0	0	0.0
<b>Total:</b>						500	9,035	103.7

Summary

Max Fl. Rate Avg Fl. Rate Max Psi Avg Psi  
 14.7 5.3 4,800 1,824

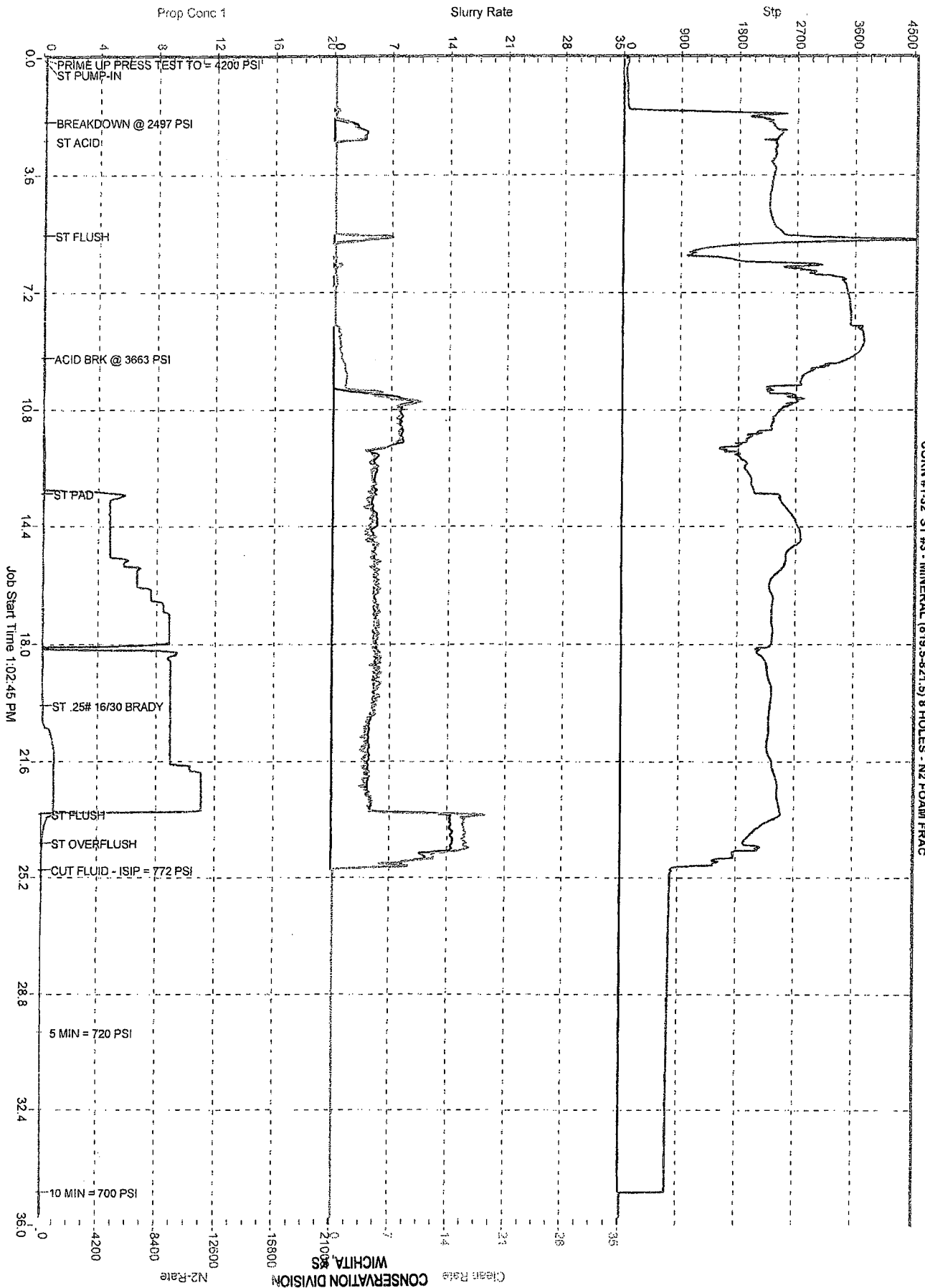
RECEIVED  
 KANSAS CORPORATION COMMISSION

DEC 08 2008

CONSERVATION DIVISION  
 WICHITA, KS

Customer Acknowledgement:	Service Rating:	Treater:	PRODUCTS USED
	<input type="checkbox"/> Satisfactory <input type="checkbox"/> Unsatisfactory	TERRY BOWMAN	CL-57, MAV-100, BREAKER-503L, GB-3, WF-1, N2 MAVCELL F, MAVCIDE II, MAVHIB-3, 7.5% HCL 16/30 BRADY

DEC 08 2008



DEC 08 2008

CONSERVATION DIVISION  
WICHITA, KS

Written By:

Jeff Hudson

*do ACO-1  
after frac  
DONE  
9-19-08*

Well No. Corn #1-32  
Pod Kanmap  
Date 6/12/2008  
State Kansas  
County Montgomery  
Location SW/4 Sec 32 - T33S - R16E  
Surface Casing 8-5/8" @ 60'  
Production Casing 4-1/2" @ 1,188'

**Completed**

Formation	Open Hole	Net Feet	Stg	Rec CH Perfs	Comments
Riverton	1,136' - 1,140'	4.0	1	1136.5' - 1139.5' 4spf	Completed on 3/15/05 - Screened out with 1,055# 20/40 sd (10# gel @ 8BPM)

**Completed**

Formation	Open Hole	Net Feet	Stg	Rec CH Perfs	Comments
Weir-Pitt	895.5' - 899'	3.5	2	896' - 899' 4spf	Completed on 3/15/05 - with 4,000# 20/40 sd and 3,500# 12/20 sd (10# gel @ 12BPM)

Set CIBP @ +/- 1120'

Set a WRBP @ +/- 880'

**Next Stage**

Formation	Open Hole	Net Feet	Stg	Rec CH Perfs	Comments
Mineral	819' - 821'	2.0	3	819.5' - 821.5' 4spf, 120°PH, 8 holes	Foam 5,000# @ 15 bpm

Set a WRBP @ +/- 810'

**Stage #4 - Defer**

Formation	Open Hole	Net Feet	Stg	Rec CH Perfs	Comments
Mulky	714' - 717.5'	3.5	4	714' - 718' 4spf, 120°PH, 16 holes	Foam 15,000# @ 20 BPM
Iron Post	739.5' - 742'	2.5		741' - 743' 4spf, 120°PH, 8 holes	
Oakley	767.5' - 769'	1.5		768' - 772' 4spf, 120°PH, 16 holes	
Croweburg	769' - 771'	2.0			

**Defer**

Formation	Open Hole	Net Feet	Rec CH Perfs	Comments
Little Osage Shale Bevier	681' - 684'	3.0	682.5' - 685' 4spf, 120°PH, 10 holes	

*NOT  
DONE*

IngWell_Numb	dtmDate	IngGas	IngWTR	IngGGG
150090	12/1/2008	9		18
150090	11/30/2008	9		18
150090	11/29/2008	9		18
150090	11/28/2008	9		18
150090	11/27/2008	9		18
150090	11/26/2008	9		18
150090	11/25/2008	9		18
150090	11/24/2008	9		18
150090	11/19/2008	10		24
150090	11/18/2008	10		24
150090	11/17/2008	10		24
150090	11/16/2008	10		24
150090	11/15/2008	10		24
150090	11/14/2008	10		24
150090	11/13/2008	10		24
150090	11/12/2008	10		24
150090	11/11/2008	10		24
150090	11/10/2008	10		24
150090	11/9/2008	10		24
150090	11/8/2008	10		24
150090	11/7/2008	10		24
150090	11/6/2008	10		24
150090	11/5/2008	10		24
150090	11/4/2008	10		24
150090	11/3/2008	9		24
150090	11/2/2008	8		
150090	11/1/2008	8		
150090	10/31/2008	8		
150090	10/30/2008	8		
150090	10/29/2008	8		
150090	10/28/2008	8		
150090	10/27/2008	9		
150090	10/26/2008	9		24
150090	10/25/2008	9		24
150090	10/24/2008	19		24
150090	10/23/2008	9		24
150090	10/22/2008	9		18
150090	10/21/2008	9		24
150090	10/20/2008	9		18
150090	10/19/2008	9		18
150090	10/18/2008	9		18
150090	10/17/2008	9		18
150090	10/16/2008	9		18
150090	10/15/2008	7		18
150090	10/14/2008	9		18
150090	10/13/2008	9		18

RECEIVED  
KANSAS CORPORATION COMMISSION

**DEC 08 2008**

CONSERVATION DIVISION  
WICHITA, KS



IngWell_Numbl	dtmDate	IngGas	IngWTR	IngCSG
150090	10/12/2008	9		24
150090	10/11/2008	9		24
150090	10/10/2008	9		24
150090	10/9/2008	8		
150090	10/8/2008	9		18
150090	5/9/2008	0	0	0
150090	4/26/2008	0	0	0
150090	3/30/2008	29	48	20
150090	2/8/2008			

RECEIVED  
KANSAS CORPORATION COMMISSION

**DEC 08 2008**

CONSERVATION DIVISION  
WICHITA, KS