

CONFIDENTIAL

ORIGINAL

5/24/08

KANSAS CORPORATION COMMISSION
OIL & GAS CONSERVATION DIVISION
WELL COMPLETION FORM
WELL HISTORY - DESCRIPTION OF WELL & LEASE

Form ACO-1
September 1999
Form Must Be Typed

Operator: License # 5447
Name: OXY USA Inc.
Address: P.O. Box 2528
City/State/Zip: Liberal, KS 67905
Purchaser: NA
Operator Contact Person: Rafael Bacigalupo
Phone: (620) 629-4200
Contractor: Name: Murfin Drilling Co., Inc.
License: 30606
Wellsite Geologist: NA
Designate Type of Completion:
[X] New Well [] Re-Entry [] Workover
[] Oil [] SWD [] SIOW [] Temp. Abd.
[X] Gas [] ENHR [] SIGW
[] Dry [] Other (Core, WSW, Expl, Cathodic, etc)
If Workover/Re-entry: Old Well Info as follows:
Operator:
Well Name:

API No. 15 - 081-21700-00-00
County: Haskell
- NE - NW - SE Sec 36 Twp. 30S S. R. 32W
2187 feet from [S] / N (circle one) Line of Section
1966 feet from [E] / W (circle one) Line of Section
Footages Calculated from Nearest Outside Section Corner:
(circle one) NE [SE] NW SW
Lease Name: Bird C Well #: 1
Field Name: Unknown
Producing Formation: NA/TA'd
Elevation: Ground: 2839 Kelly Bushing: 2850
Total Depth: 5820 Plug Back Total Depth: 5575
Amount of Surface Pipe Set and Cemented at 1752 feet
Multiple Stage Cementing Collar Used? [] Yes [X] No
If yes, show depth set
If Alternate II completion, cement circulated from
feet depth to w/ sx cmt.

KCC
MAY 24 2007
CONFIDENTIAL

Original Comp. Date: Original Total Depth:
Deepening Re-perf. Conv. To Enhr./SWD
Plug Back Plug Back Total Depth
Commingled Docket No.
Dual Completion Docket No.
Other (SWD or Enhr.?) Docket No.
01/30/07 02/08/07 03/01/07
Spud Date or Date Reached TD Completion Date or Recompletion Date

Drilling Fluid Management Plan AEI NH 6-11-08
(Data must be collected from the Reserve Pit)
Chloride content 8400 mg/l ppm Fluid volume 1550 bbls
Dewatering method used Evaporation
Location of fluid disposal if hauled offsite:
Operator Name:
Lease Name: License No.:
Quarter Sec. Twp, S. R. [] East [] West
County: Docket No.:

INSTRUCTIONS: An original and two copies of this form shall be filed with the Kansas Corporation Commission, 130 S. Market - Room 2078, Wichita, Kansas 6702, within 120 days of the spud date, recompletion, workover or conversion of a well. Rule 82-3-130, 82-3-106 and 82-3-107 apply. Information of side two of this form will be held confidential for a period of 12 months if requested in writing and submitted with the form (see rule 82-3-107 for confidentiality in excess of 12 months). One copy of all wireline logs and geologist well report shall be attached with this form. ALL CEMENTING TICKETS MUST BE ATTACHED. Submit CP-4 form with all plugged wells. Submit CP-111 form with all temporarily abandoned wells.

All requirements of the statutes, rules and regulations promulgated to regulate the oil and gas industry have been fully complied with and the statements herein are complete and correct to the best of my knowledge.

Signature: [Signature]
Title: Capital Project Date 05/24/2007
Subscribed and sworn to before me this 24 day of May
20 07
Notary Public: Anita Peterson
Date Commission Expires: Oct. 1, 2009

KCC Office Use Only
Y Letter of Confidentiality Attached
If Denied, Yes [] Date:
[check] Wireline Log Received
Geologist Report Received
UIC Distribution
RECEIVED
KANSAS CORPORATION COMMISSION
MAY 29 2007
CONSERVATION DIVISION
WICHITA, KS

ANITA PETERSON
Notary Public - State of Kansas
My Appt. Expires October 1, 2009

JAN 1980

Side Two

Operator Name: OXY USA Inc. Lease Name: Bird C Well #: 1
 Sec. 36 Twp. 30 S. R. 32W East West County: Haskell

Instructions: Show important tops and base of formations penetrated. Detail all cores. Report all final copies of drill stems tests giving interval tested, time tool open and closed, flowing and shut-in pressures, whether shut-in pressure reached static level, hydrostatic pressures, bottom hole temperature, fluid recovery, and flow rates if gas to surface test, along with final chart(s). Attach extra sheet if more space is needed. Attach copy of all Electric Wireline Logs surveyed. Attach final geological well site report.

Drill Stem Tests Taken <input type="checkbox"/> Yes <input checked="" type="checkbox"/> No <i>(Attach Additional Sheets)</i> Samples Sent to Geological Survey <input type="checkbox"/> Yes <input checked="" type="checkbox"/> No Cores Taken <input type="checkbox"/> Yes <input checked="" type="checkbox"/> No Electric Log Run <input checked="" type="checkbox"/> Yes <input type="checkbox"/> No <i>(Submit Copy)</i> List All E. Logs Run: Cement Bond Log Microlog Long Space Sonic Spectral Density Dual Spaced Neutron High Resolution Induction	<input checked="" type="checkbox"/> Log Formation (Top), Depth and Datum <input type="checkbox"/> Sample Name Top Datum Heebner 4150 -1300 Lansing 4257 -1407 Marmaton 4989 -2028 Cherokee 5033 -2183 Atoka 5200 -2350 Morrow 5312 -2462 Chester 5423 -2573 (See Side Three)
--	--

CASING RECORD <input checked="" type="checkbox"/> New <input type="checkbox"/> Used							
Report all strings set-conductor, surface, intermediate, production, etc.							
Purpose of String	Size Hole Drilled	Size Casing Set(in. O.D.)	Weight Lbs./ft.	Setting Depth	Type of Cement	# Sacks Used	Type and Percent Additives
Conductor					C		
Surface	12 1/4	8 5/8	24	1752	C	585	Poz C + additives
					C	195	Class C + additives
Production	7 7/8	5 1/2	17	5818	C	110	Poz H + additives

ADDITIONAL CEMENTING / SQUEEZE RECORD

Purpose:	Depth Top Bottom	Type of Cement	#Sacks Used	Type and Percent Additives
<input type="checkbox"/> Perforate				
<input type="checkbox"/> Protect Casing	-			
<input type="checkbox"/> Plug Back TD				
<input type="checkbox"/> Plug off Zone	-			

Shots Per Foot	PERFORATION RECORD - Bridge Plugs Set/type Specify Footage of Each Interval Perforated	Acid, Fracture, Shot, Cement Squeeze Record (Amount and Kind of Material Used)	Depth
4	5394-5396, 5400-5409, 5417-5419, 5422-5428	94 bbls acid w/Flush 16,847 gals 15# X-link foamed @ 75% N2; 95,000 20/40 Sand	

TUBING RECORD	Size 2 3/8	Set At 5470	Packer At	Liner Run <input type="checkbox"/> Yes <input checked="" type="checkbox"/> No
---------------	---------------	----------------	-----------	--

Date of First, Resumed Production, SWD or Enhr.	Producing Method <input type="checkbox"/> Flowing <input type="checkbox"/> Pumping <input type="checkbox"/> Gas Lift <input checked="" type="checkbox"/> Other (Explain) TA'd
---	--

Estimated Production Per 24 Hours	Oil BBLS 0	Gas Mcf 0	Water Bbls 0	Gas-Oil Ratio	Gravity
-----------------------------------	---------------	--------------	-----------------	---------------	---------

Disposition of Gas METHOD OF COMPLETION Production Interval

Vented Sold Used on Lease Open Hole Perf. Dually Comp. Commingled _____
(If vented, Submit ACO-18) Other (Specify) _____

CONFIDENTIAL

Side Three

Operator Name: OXY USA Inc. Lease Name: Bird C Well #: 1

Sec. 36 Twp. 30 S. R. 32W East West County: Haskell

<u>Name</u>	<u>Top</u>	<u>Datum</u>
Chester	5554	-2704
St Genevieve	5651	-2801
TD	5820	

KCC
MAY 24 2007
CONFIDENTIAL

RECEIVED
KANSAS CORPORATION COMMISSION

MAY 29 2007

CONSERVATION DIVISION
WICHITA, KS



Cementing Service Report

Customer: OXY RESOURCE CALIFORNIA LLC	Job Number: 2205553131
---	----------------------------------

Well: BIRL		Location (legal):		Schlumberger Location: Perryton, TX		Job Start: 2007-Feb-01		
Field: CEDARDALE		Formation Name/Type:		Deviation:		Well MD: 1,752 ft		
County: Woodward		State/Province: OK		BHP: psi		BHST: 98 °F		
Well Master: 0630274074		API / UWI: 3515322280000		Casing/Liner				
Rig Name: MURFIN 20		Drilled For: Oil & Gas		Service Via: Land		Depth, ft: 1752		
Offshore Zone:		Well Class: New		Well Type: Development		Size, in: 8.63		
Drilling Fluid Type: Bentonite		Max. Density: 9 lb/gal		Plastic Vt: cp		Weight, lb/ft: 24		
Service Line: Cementing		Job Type: Cem Surface Casing		Grade:				
Max. Allowed Tubing Pressure: 1500 psi		Max. Allowed Ann. Pressure: psi		WellHead Connection: 8 5/8" H&SM		Thread: 8RD		
Service Instructions: CEMENT 8 5/8" SURFACE CASING WITH: 10 BBL FRESH WATER 585 SK 35:65 POZ C + 6% D020 + 2% S001 + 0.25 pps D130 195 SK CLASS C + 2% S001 + 0.125 pps D130 DISPLACE WITH FRESH WATER				Perforations/Open Hole				
Casing/Tubing Secured: <input checked="" type="checkbox"/>				1 Hole Volume Circulated prior to Cementing: <input type="checkbox"/>				
Lift Pressure: 500 psi				Shoe Type: Guide		Squeeze Type:		
Pipe Rotated: <input type="checkbox"/>				Pipe Reciprocated: <input type="checkbox"/>		Shoe Depth: ft		
No. Centralizers: Top Plugs: 1				Bottom Plugs:		Stage Tool Type:		
Cement Head Type: Single				Stage Tool Depth: ft		Tool Depth: ft		
Job Scheduled For: 1/31/2007 21:30		Arrived on Location: 2007-Jan-31 22:00		Leave Location: 2007-Feb-01 3:45		Collar Type: Auto-Fill		
				Collar Depth: ft		Tail Pipe Size: in		
						Tail Pipe Depth: ft		
						Sqz Total Vol: bbl		
Date	Time	Treating Pressure	Density	CMT RATE	CMT VOL	CS NRD TOTAL	CS NRD RATE	Message
	24 hr clock	psi	lb/gal	bbf/min	bbl	bbl	bbf/min	
2007-Feb-01	0:01	0	8.31	0.0	0.0	0.0	2.2	0
2007-Feb-01	0:01							Reset Total, Vol = 0.00 bbl
2007-Feb-01	0:01							Reset Total, Vol = 0.00 bbl
2007-Feb-01	0:42	-5	8.31	0.0	0.0	0.0	0.0	0
2007-Feb-01	0:42	-5	8.31	0.0	0.0	0.0	0.0	0
2007-Feb-01	0:43	0	8.31	0.0	0.0	0.0	0.0	0
2007-Feb-01	0:43							Start Job
2007-Feb-01	0:43	0	8.32	0.0	0.0	0.0	0.0	0
2007-Feb-01	0:43							Start Pumping Spacer
2007-Feb-01	0:43	0	8.31	0.0	0.0	0.0	0.0	0
2007-Feb-01	0:43							Pressure Test Lines
2007-Feb-01	0:43	0	8.32	0.0	0.0	0.0	0.0	0
2007-Feb-01	0:43	0	8.31	0.0	0.0	0.0	0.0	0
2007-Feb-01	0:44	23	8.31	0.0	0.0	0.6	0.8	0
2007-Feb-01	0:44	5	8.31	0.0	0.0	0.7	0.0	0
2007-Feb-01	0:45	5	8.31	0.0	0.0	0.7	0.0	0
2007-Feb-01	0:45	5	8.31	0.0	0.0	0.7	0.0	0
2007-Feb-01	0:46	32	8.31	0.0	0.0	0.7	0.0	0
2007-Feb-01	0:46	32	8.31	0.0	0.0	0.7	0.0	0
2007-Feb-01	0:47	64	8.31	0.0	0.1	0.8	0.0	0
2007-Feb-01	0:47	73	8.31	0.0	0.1	0.8	0.0	0
2007-Feb-01	0:48	73	8.31	0.0	0.1	0.8	0.0	0

KCC
MAY 24 2007
CONFIDENTIAL

RECEIVED
KANSAS CORPORATION COMMISSION
MAY 29 2007
CONSERVATION DIVISION
WICHITA, KS

Well		Field			Service Date		Customer		Job Number
BIRD #2-24		CEDARDALE			0732-Feb-01		OXY RESOURCE CALIFORNIA LLC		2205563131
Date	Time	Treating Pressure	Density	CMT RATE	CMT VOL	CS NRD TOTAL	CS NRD RATE	0	Message
	24 hr clock	psi	lb/gal	bbbl/min	bbbl	bbbl	bbbl/min	0	
2007-Feb-01	0:48	105	8.31	1.0	0.2	0.8	0.4	0	
2007-Feb-01	0:49	73	8.31	0.0	0.6	1.3	0.0	0	
2007-Feb-01	0:49	73	8.31	0.0	0.6	1.3	0.0	0	
2007-Feb-01	0:50	73	8.31	0.0	0.6	1.3	0.0	0	
2007-Feb-01	0:50	2820	8.31	0.0	0.6	1.3	0.0	0	
2007-Feb-01	0:51	82	8.31	0.0	0.6	1.3	0.0	0	
2007-Feb-01	0:51	64	8.31	0.0	0.6	1.3	0.0	0	
2007-Feb-01	0:51	64	8.31	0.0	0.6	1.3	0.0	0	
2007-Feb-01	0:51								Pressure Test Lines
2007-Feb-01	0:52	60	8.31	0.0	0.6	1.3	0.0	0	
2007-Feb-01	0:52	119	8.31	1.3	0.7	1.3	1.0	0	
2007-Feb-01	0:53	266	8.31	3.7	2.1	2.7	3.8	0	
2007-Feb-01	0:53	261	8.30	4.4	4.3	4.9	4.6	0	
2007-Feb-01	0:54	247	8.28	4.4	6.5	7.2	4.6	0	
2007-Feb-01	0:54	238	8.29	4.5	8.8	9.5	4.7	0	
2007-Feb-01	0:55	238	8.28	4.6	11.0	11.8	4.8	0	
2007-Feb-01	0:55								Start Cement Slurry
2007-Feb-01	0:55	247	9.25	4.6	12.8	13.9	5.6	0	
2007-Feb-01	0:55	252	9.45	4.6	13.1	14.2	5.6	0	
2007-Feb-01	0:55								End Spacer
2007-Feb-01	0:55	256	9.66	4.6	13.3	14.5	5.6	0	
2007-Feb-01	0:55								Start Mixing Lead Slurry
2007-Feb-01	0:55	252	10.09	4.6	13.8	15.0	5.6	0	
2007-Feb-01	0:55								End Cement Slurry
2007-Feb-01	0:55	238	10.33	4.6	14.0	15.3	5.6	0	
2007-Feb-01	0:56	270	11.77	4.6	15.6	17.2	5.4	0	
2007-Feb-01	0:56	256	13.01	4.7	17.9	19.8	5.0	0	
2007-Feb-01	0:57	224	12.19	4.7	20.3	22.1	4.4	0	
2007-Feb-01	0:57	215	11.13	4.9	22.6	24.4	4.6	0	
2007-Feb-01	0:58	224	10.63	5.4	25.3	27.0	5.8	0	
2007-Feb-01	0:58	229	11.47	5.1	28.0	30.0	5.7	0	
2007-Feb-01	0:59	238	12.50	5.1	30.5	32.8	5.5	0	
2007-Feb-01	0:59	215	13.08	5.1	33.1	35.5	5.5	0	
2007-Feb-01	1:00	211	13.06	5.2	35.7	38.2	5.3	0	
2007-Feb-01	1:00	197	12.70	5.1	38.2	40.8	5.2	0	
2007-Feb-01	1:01	174	12.18	5.2	40.8	43.4	5.2	0	
2007-Feb-01	1:01	160	11.72	5.2	43.4	46.0	5.3	0	
2007-Feb-01	1:02	165	11.66	5.2	46.0	48.7	5.5	0	
2007-Feb-01	1:02	160	11.76	5.2	48.6	51.5	5.6	0	
2007-Feb-01	1:03	160	11.94	5.3	51.3	54.2	5.6	0	
2007-Feb-01	1:03	151	12.09	5.3	53.9	57.1	5.6	0	
2007-Feb-01	1:04	110	12.22	4.8	56.4	59.7	5.1	0	
2007-Feb-01	1:04	110	12.28	4.8	58.8	62.2	5.0	0	
2007-Feb-01	1:05	114	12.30	4.8	61.2	64.7	5.1	0	
2007-Feb-01	1:05	87	12.26	4.8	63.5	67.2	5.1	0	
2007-Feb-01	1:06	110	12.18	4.8	65.9	69.7	5.0	0	
2007-Feb-01	1:06	146	12.37	5.4	68.4	72.2	5.6	0	
2007-Feb-01	1:07	146	12.63	5.4	71.1	75.1	5.6	0	
2007-Feb-01	1:07	137	12.43	5.3	73.7	77.8	5.5	0	
2007-Feb-01	1:08	128	11.91	5.3	76.4	80.6	5.5	0	
2007-Feb-01	1:08	128	11.66	5.3	79.1	83.4	5.7	0	
2007-Feb-01	1:09	142	12.05	5.4	81.7	86.2	5.9	0	
2007-Feb-01	1:09	146	12.43	5.4	84.4	89.1	5.7	0	
2007-Feb-01	1:10	146	12.65	5.4	87.2	92.0	5.7	0	

RECEIVED
 KANSAS CORPORATION COMMISSION
MAY 29 2007
 CONSERVATION DIVISION
 WICHITA, KS

Well		Field		Service Date		Customer		Job Number	
BIRD #2-24		CEDARDALE		0732-Feb-01		OXY RESOURCE CALIFORNIA LLC		220553131	
Date	Time	Treating Pressure	Density	CMT RATE	CMT VOL	CS NRD TOTAL	CS NRD RATE	0	Message
	24 hr clock	psi	lb/gal	bbl/min	bbl	bbl	bbl/min	0	
2007-Feb-01	1:10	142	12.69	5.4	89.9	94.8	5.6	0	
2007-Feb-01	1:11	146	12.61	5.5	92.6	97.6	5.6	0	
2007-Feb-01	1:11	142	12.43	5.5	95.3	100.4	5.6	0	
2007-Feb-01	1:12	142	12.27	5.5	98.1	103.2	5.7	0	
2007-Feb-01	1:12	137	12.14	5.5	100.8	106.1	5.6	0	
2007-Feb-01	1:13	137	12.10	5.5	103.6	108.9	5.7	0	
2007-Feb-01	1:13	142	12.10	5.5	106.3	111.8	5.8	0	
2007-Feb-01	1:14	137	12.11	5.5	109.1	114.7	5.7	0	
2007-Feb-01	1:14	137	12.10	5.5	111.8	117.5	5.6	0	
2007-Feb-01	1:15	146	12.14	5.5	114.5	120.3	5.8	0	
2007-Feb-01	1:15	151	12.43	5.4	117.3	123.2	5.8	0	
2007-Feb-01	1:16	151	12.66	5.5	120.0	126.1	5.8	0	
2007-Feb-01	1:16	146	12.78	5.4	122.8	128.9	5.6	0	
2007-Feb-01	1:17	146	12.74	5.4	125.5	131.8	5.6	0	
2007-Feb-01	1:17	137	12.52	5.4	128.2	134.5	5.5	0	
2007-Feb-01	1:18	133	12.30	5.4	130.9	137.3	5.6	0	
2007-Feb-01	1:18	142	12.19	5.4	133.6	140.1	5.6	0	
2007-Feb-01	1:19	137	12.18	5.4	136.3	143.0	5.6	0	
2007-Feb-01	1:19	137	12.20	5.4	139.0	145.8	5.5	0	
2007-Feb-01	1:20	133	12.17	5.4	141.7	148.5	5.6	0	
2007-Feb-01	1:20	137	12.11	5.4	144.4	151.4	5.7	0	
2007-Feb-01	1:21	137	12.08	5.4	147.1	154.2	5.8	0	
2007-Feb-01	1:21	133	11.86	5.4	149.8	157.1	5.6	0	
2007-Feb-01	1:22	133	11.72	5.4	152.6	159.9	5.8	0	
2007-Feb-01	1:22	137	12.11	5.4	155.3	162.8	5.8	0	
2007-Feb-01	1:23	133	12.32	5.3	157.9	165.7	5.6	0	
2007-Feb-01	1:23	128	12.27	5.2	160.6	168.4	5.4	0	
2007-Feb-01	1:24	124	12.16	5.3	163.2	171.2	5.5	0	
2007-Feb-01	1:24	124	12.19	5.2	165.8	173.9	5.5	0	
2007-Feb-01	1:25	128	12.24	5.3	168.5	176.7	5.5	0	
2007-Feb-01	1:25	128	12.29	5.2	171.1	179.4	5.5	0	
2007-Feb-01	1:26	128	12.30	5.2	173.7	182.1	5.5	0	
2007-Feb-01	1:26	142	12.26	5.7	176.4	184.9	5.9	0	
2007-Feb-01	1:27	146	12.19	5.7	179.3	187.9	5.8	0	
2007-Feb-01	1:27	146	12.30	5.6	182.1	190.8	6.0	0	
2007-Feb-01	1:28	151	12.48	5.6	184.9	193.8	5.9	0	
2007-Feb-01	1:28	156	12.66	5.6	187.7	196.7	5.9	0	
2007-Feb-01	1:29	160	12.78	5.6	190.5	199.6	5.8	0	
2007-Feb-01	1:29	151	12.67	5.6	193.3	202.5	5.7	0	
2007-Feb-01	1:30	142	12.29	5.6	196.1	205.3	5.7	0	
2007-Feb-01	1:30	142	11.97	5.6	198.9	208.2	5.7	0	
2007-Feb-01	1:31	142	11.94	5.6	201.7	211.1	5.9	0	RECEIVED KANSAS CORPORATION COMMISSION
2007-Feb-01	1:31	146	12.11	5.6	204.5	214.0	5.8	0	
2007-Feb-01	1:32	156	12.24	5.6	207.3	216.9	5.9	0	MAY 29 2007
2007-Feb-01	1:32	151	12.34	5.6	210.1	219.8	5.7	0	
2007-Feb-01	1:33	156	12.38	5.5	212.8	222.7	5.6	0	CONSERVATION DIVISION WICHITA, KS
2007-Feb-01	1:33	124	12.25	5.0	215.6	225.5	5.2	0	
2007-Feb-01	1:34	119	11.65	5.0	218.1	228.1	5.2	0	
2007-Feb-01	1:34	146	12.37	5.0	219.8	230.0	5.7	0	
2007-Feb-01	1:34								Start Mixing Tail Slurry
2007-Feb-01	1:34	160	12.98	5.0	220.6	230.9	5.7	0	
2007-Feb-01	1:34	160	13.22	5.0	220.9	231.3	5.7	0	
2007-Feb-01	1:34								Reset Total, Vol = 220.92 bbl
2007-Feb-01	1:35	183	14.46	5.0	2.2	2.4	5.4	0	

Well		Field		Service Date		Customer		Job Number	
BIRD #2-24		CEDARDALE		0732-Feb-01		OXY RESOURCE CALIFORNIA LLC		2205553131	
Date	Time	Treating Pressure	Density	CMT RATE	CMT VOL	CS NRD TOTAL	CS NRD RATE	0	Message
	24 hr clock	psi	lb/gal	bbl/min	bbl	bbl	bbl/min	0	
2007-Feb-01	1:35	197	15.13	5.0	4.7	5.1	5.2	0	
2007-Feb-01	1:36	183	15.14	5.0	7.2	7.7	5.2	0	
2007-Feb-01	1:36	188	15.16	5.0	9.7	10.2	5.1	0	
2007-Feb-01	1:37	179	15.06	5.2	12.2	12.8	5.4	0	
2007-Feb-01	1:37	206	14.90	5.6	14.9	15.6	5.7	0	
2007-Feb-01	1:38	247	14.75	6.2	17.9	18.7	6.3	0	
2007-Feb-01	1:38	229	14.67	6.2	21.0	21.8	6.3	0	
2007-Feb-01	1:39	233	14.71	6.2	24.1	25.0	6.4	0	
2007-Feb-01	1:39	238	14.84	6.2	27.2	28.2	6.4	0	
2007-Feb-01	1:40	247	15.07	6.2	30.3	31.4	6.4	0	
2007-Feb-01	1:40	261	15.27	5.8	33.3	34.6	5.6	0	
2007-Feb-01	1:41	224	15.31	5.8	36.2	37.5	6.0	0	
2007-Feb-01	1:41	201	15.10	5.8	39.1	40.5	5.8	0	
2007-Feb-01	1:42	110	14.52	3.8	41.5	43.0	4.7	0	
2007-Feb-01	1:42	-9	14.33	0.0	42.9	44.8	0.1	0	
2007-Feb-01	1:42	-9	14.30	0.0	42.9	44.8	0.0	0	
2007-Feb-01	1:42								End Tail Slurry
2007-Feb-01	1:43	-14	14.25	0.0	42.9	44.8	0.0	0	
2007-Feb-01	1:43	-14	14.24	0.0	42.9	44.8	0.0	0	
2007-Feb-01	1:44	-9	14.22	0.0	42.9	44.8	0.0	0	
2007-Feb-01	1:44	-9	11.14	0.0	42.9	45.7	2.6	0	
2007-Feb-01	1:45	-9	9.63	0.0	42.9	47.1	3.0	0	
2007-Feb-01	1:45	-9	9.21	0.0	42.9	48.7	3.1	0	
2007-Feb-01	1:46	-9	9.08	0.0	42.9	50.1	0.4	0	
2007-Feb-01	1:46	78	9.02	0.0	42.9	50.3	3.2	0	
2007-Feb-01	1:47	73	8.89	5.1	44.6	52.7	5.3	0	
2007-Feb-01	1:47								Drop Top Plug
2007-Feb-01	1:47	78	8.86	5.1	46.0	54.1	5.3	0	
2007-Feb-01	1:47	78	8.85	5.1	46.1	54.3	5.4	0	
2007-Feb-01	1:47								Start Displacement
2007-Feb-01	1:47								Reset Total, Vol = 46.56 bbl
2007-Feb-01	1:47	82	8.85	5.1	46.6	54.8	5.4	0	
2007-Feb-01	1:47	82	8.84	5.1	0.6	0.6	5.4	0	
2007-Feb-01	1:48	78	8.49	5.2	3.2	3.3	5.4	0	
2007-Feb-01	1:48	73	8.38	5.2	5.8	5.9	5.5	0	
2007-Feb-01	1:49	78	8.41	5.2	8.4	8.6	5.5	0	
2007-Feb-01	1:49	105	8.41	5.3	11.0	11.3	5.4	0	
2007-Feb-01	1:50	110	8.35	5.3	13.7	14.0	5.4	0	
2007-Feb-01	1:50	119	8.34	5.3	16.3	16.7	5.5	0	
2007-Feb-01	1:51	133	8.35	5.3	19.0	19.5	5.5	0	
2007-Feb-01	1:51	151	8.34	5.4	21.7	22.2	5.4	0	
2007-Feb-01	1:52	156	8.33	5.4	24.4	24.9	5.5	0	
2007-Feb-01	1:52	165	8.33	5.4	27.1	27.6	5.5	0	
2007-Feb-01	1:53	174	8.33	5.5	29.8	30.4	5.6	0	
2007-Feb-01	1:53	188	8.32	5.5	32.5	33.2	5.6	0	
2007-Feb-01	1:54	192	8.32	5.5	40.2	36.0	5.6	0	
2007-Feb-01	1:54	206	8.32	5.6	43.0	38.9	5.9	0	
2007-Feb-01	1:55	224	8.32	5.7	45.8	41.7	5.8	0	
2007-Feb-01	1:55	215	8.32	5.7	48.7	44.6	5.8	0	
2007-Feb-01	1:56	233	8.32	5.7	51.5	47.5	5.8	0	
2007-Feb-01	1:56	252	8.32	5.8	54.4	50.4	5.9	0	
2007-Feb-01	1:57	266	8.32	5.8	57.3	53.4	5.9	0	
2007-Feb-01	1:57	284	8.32	5.9	60.2	56.3	6.0	0	
2007-Feb-01	1:58	293	8.32	5.9	63.1	59.3	6.0	0	

RECEIVED
KANSAS CORPORATION COMMISSION
MAY 29 2007
CONSERVATION DIVISION
WICHITA, KS

Well		Field		Service Date		Customer		Job Number	
BIRD #2-24		CEDARDALE		0732-Feb-01		OXY RESOURCE CALIFORNIA LLC		2205553131	
Date	Time	Treating Pressure	Density	CMT RATE	CMT VOL	CS NRD TOTAL	CS NRD RATE	0	Message
	24 hr clock	psi	lb/gal	bbl/min	bbl	bbl	bbl/min	0	
2007-Feb-01	1:58	320	8.32	5.9	66.1	62.3	6.0	0	
2007-Feb-01	1:59	339	8.32	6.0	69.1	65.3	6.1	0	
2007-Feb-01	1:59	348	8.32	6.0	72.1	68.3	6.0	0	
2007-Feb-01	2:00	371	8.32	6.0	75.0	71.3	6.1	0	
2007-Feb-01	2:00	389	8.32	6.1	78.1	74.4	6.2	0	
2007-Feb-01	2:01	421	8.32	6.1	81.1	77.4	6.1	0	
2007-Feb-01	2:01	439	8.32	6.2	84.2	80.5	6.2	0	
2007-Feb-01	2:02	471	8.31	6.2	87.3	83.7	6.3	0	
2007-Feb-01	2:02	490	8.32	6.2	90.4	86.8	6.3	0	
2007-Feb-01	2:03	508	8.31	6.2	93.5	89.9	6.2	0	
2007-Feb-01	2:03	536	8.31	6.3	96.6	93.1	6.2	0	
2007-Feb-01	2:04	467	8.31	3.6	99.4	96.0	3.7	0	
2007-Feb-01	2:04	449	8.31	2.4	100.7	97.4	2.4	0	
2007-Feb-01	2:05	362	8.31	0.0	101.1	97.8	0.0	0	
2007-Feb-01	2:05	412	8.31	1.6	101.2	97.9	1.4	0	
2007-Feb-01	2:06	449	8.31	2.7	102.5	99.1	2.7	0	
2007-Feb-01	2:06	476	8.31	2.7	103.8	100.5	2.7	0	
2007-Feb-01	2:07	499	8.31	2.7	105.2	101.8	2.7	0	
2007-Feb-01	2:07	471	8.31	2.5	106.4	103.1	2.6	0	
2007-Feb-01	2:08	476	8.31	2.6	107.7	104.4	2.6	0	
2007-Feb-01	2:08	797	8.31	2.5	109.0	105.7	2.5	0	
2007-Feb-01	2:09	1021	8.31	0.0	109.1	105.9	0.0	0	
2007-Feb-01	2:09	1021	8.31	0.0	109.1	105.9	0.0	0	
2007-Feb-01	2:10	1025	8.31	0.0	109.1	105.9	0.0	0	
2007-Feb-01	2:10	-9	8.32	0.0	109.1	105.9	0.0	0	
2007-Feb-01	2:10	-9	8.31	0.0	109.1	105.9	0.0	0	
2007-Feb-01	2:10								Bump Top Plug

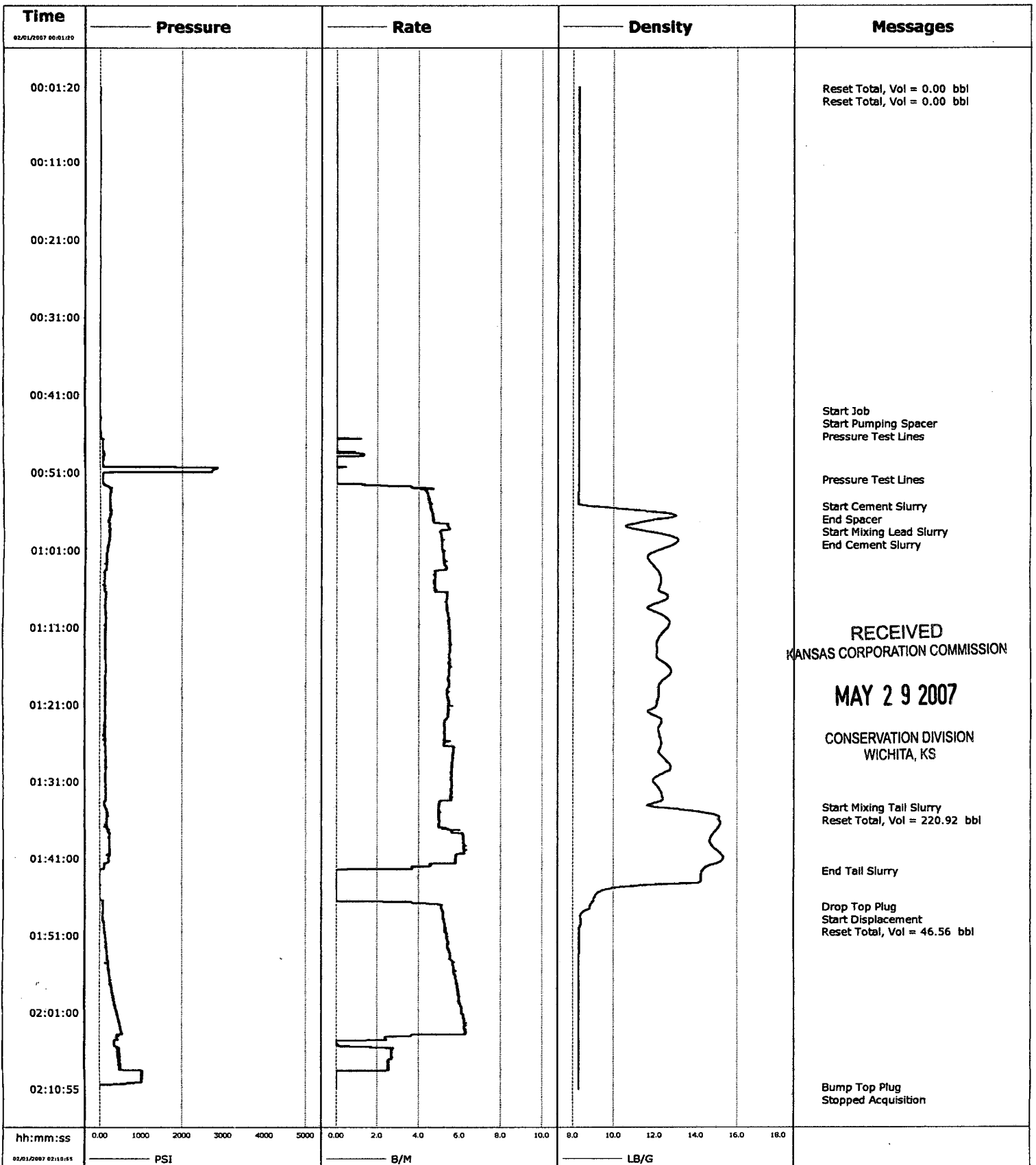
Post Job Summary									
Average Pump Rates, bpm					Volume of Fluid Injected, bbl				
Slurry	N2	Mud	Maximum Rate	Total Slurry	Mud	Spacer	N2		
5.5			6	274		10			
Treating Pressure Summary, psi					Breakdown Fluid				
Maximum	Final	Average	Bump Plug to	Breakdown	Volume	Density			
500		250	1000			8.34 lb/gal			
Avg. N2 Percent	Designed Slurry Volume	Displacement	Mix Water Temp	<input checked="" type="checkbox"/> Cement Circulated to Surface?	Volume	70	bbl		
%	273.6 bbl	108.8 bbl	60 °F	<input type="checkbox"/> Washed Thru Perfs	To		ft		
Customer or Authorized Representative			Schlumberger Supervisor			<input type="checkbox"/> Circulation Lost		<input checked="" type="checkbox"/> Job Completed	
ARROYO, ELKIN			Flanagan, Patrick						

RECEIVED
KANSAS CORPORATION COMMISSION

MAY 29 2007

CONSERVATION DIVISION
WICHITA, KS

Well		Client	
Field		SIR No.	
Engineer		Job Type	
Country	United States	Job Date	01-31-2007





Cementing Service Report

Customer OXY RESOURCES CALIFORNIA LLC						Job Number 2205553384				
Well BIRD C 1			Location (legal)			Schlumberger Location Perryton, TX			Job Start 2007-Feb-09	
Field LETTE		Formation Name/Type			Deviation	Bit Size in	Well MD 5,820 ft	Well TVD 5,820 ft		
County Haskell		State/Province KS			BHP psi	BHST °F	BHCT °F	Pore Press. Gradient psi/ft		
Well Master: 0630889295		API / UWI: 15081217000000			Casing/Liner					
Rig Name	Drilled For Gas		Service Via Land		Depth, ft 5818	Size, in 5.5	Weight, lb/ft 17	Grade	Thread	
Offshore Zone	Well Class New		Well Type Development		Tubing/Drill Pipe					
Drilling Fluid Type		Max. Density lb/gal	Plastic V: cp		Depth,	Size, in	Weight, lb/ft	Grade	Thread	
Service Line Cementing		Job Type Cem Prod Casing			Perforations/Open Hole					
Max. Allowed Tubing Pressure 2000 psi	Max. Allowed Ann. Pressure psi		WellHead Connection 5 1/2" H&M		Top, ft	Bottom, ft	spf	No. of Shots	Total Interval ft	
Service Instructions 20 bbls CW100 135 sks 50/50 POZ/H+3%M117+2%D20+5ppsD42+5ppsD53+0.25%D46 +0.25%D65+0.25%D112 (25sks for rodent holes) Displace with fresh water									Diameter in	
					Treat Down Casing	Displacement 134 bbl		Packer Type	Packer Depth ft	
					Tubing Vol. bbl	Casing Vol. 135 bbl	Annular Vol. 180 bbl	OpenHole Vol 315 bbl		
Casing/Tubing Secured <input checked="" type="checkbox"/>		1 Hole Volume Circulated prior to Cementing <input checked="" type="checkbox"/>			Casing Tools			Squeeze Job		
Lift Pressure: 450 psi		Pipe Rotated <input type="checkbox"/>			Pipe Reciprocated <input type="checkbox"/>			Shoe Type:		
No. Centralizers: Top Plugs: 1 Bottom Plugs: 0		Cement Head Type: Single			Shoe Depth: 5818 ft			Squeeze Type		
Job Scheduled For:		Arrived on Location: 2007-Feb-09 5:30		Leave Location: 2007-Feb-09 10:45		Stage Tool Type:			Tool Depth: ft	
						Stage Tool Depth: ft			Tail Pipe Size: in	
						Collar Type:			Tail Pipe Depth: ft	
						Collar Depth: 5775 ft			Sqz Total Vol: bbl	
Date	Time	Treating Pressure	Flow Rate	Volume	CMT DENS	Flowmeter Rate	Flowmeter Tot	0	Message	
	24 hr clock	psi	bbl/min	bbl	lb/gal	bbl/min	bbl	0		
2007-Feb-09	8:38	0	0.0	0.0	8.31	0.0	0.0	0		
2007-Feb-09	8:38	0	0.2	0.0	8.31	0.0	0.0	0		
2007-Feb-09	8:38								Start Job	
2007-Feb-09	8:38	1570	0.1	0.3	8.31	0.0	0.0	0		
2007-Feb-09	8:39	3035	0.0	0.3	8.31	0.0	0.0	0		
2007-Feb-09	8:39	3017	0.0	0.3	8.31	0.0	0.0	0		
2007-Feb-09	8:39								Pressure Test Lines	
2007-Feb-09	8:39	2980	0.0	0.3	8.31	0.0	0.0	0		
2007-Feb-09	8:40	2957	0.0	0.3	8.31	0.0	0.0	0		
2007-Feb-09	8:40	87	0.0	0.3	8.31	0.0	0.0	0		
2007-Feb-09	8:41	330	0.3	0.8	8.31	4.3	0.6	0		
2007-Feb-09	8:41	375	0.0	0.8	8.33	5.5	3.3	0		
2007-Feb-09	8:41	375	0.0	0.8	8.32	5.5	4.4	0		
2007-Feb-09	8:41								Start Pumping Wash	
2007-Feb-09	8:42	371	0.0	0.8	8.32	5.6	6.0	0		
2007-Feb-09	8:42	357	0.0	0.8	8.32	5.5	8.8	0		
2007-Feb-09	8:43	362	0.1	0.8	8.35	5.5	11.5	0		
2007-Feb-09	8:43	352	0.0	0.8	8.26	5.4	14.2	0		
2007-Feb-09	8:44	362	0.1	0.9	8.28	5.3	16.9	0		
2007-Feb-09	8:44	352	0.0	0.9	8.31	5.4	19.7	0		
2007-Feb-09	8:45	73	0.0	1.0	8.31	0.0	21.1	0		
2007-Feb-09	8:45								End Wash	

KCC
MAY 24 2007
CONFIDENTIAL

RECEIVED
KANSAS CORPORATION COMMISSION

MAY 29 2007

CONSERVATION DIVISION
WICHITA, KS

Well		Field			Service Date		Customer		Job Number
BIRD C #1		LETTE			0740-Feb-09		OXY RESOURCES CALIFORNIA LLC		2205553384
Date	Time	Treating Pressure	Flow Rate	Volume	CMT DENS	Flowmeter Rate	Flowmeter Tot	0	Message
	24 hr clock	psi	bbl/min	bbl	lb/gal	bbl/min	bbl	0	
2007-Feb-09	8:45	69	0.0	1.0	8.31	0.0	21.1	0	
2007-Feb-09	8:45								Reset Total, Vol = 0.98 bbl
2007-Feb-09	8:45	69	0.0	0.0	8.31	0.0	0.0	0	
2007-Feb-09	8:45	64	0.0	0.0	8.31	0.0	0.0	0	
2007-Feb-09	8:45								Start rodent holes
2007-Feb-09	8:45	55	0.0	0.0	5.93	0.1	0.1	0	
2007-Feb-09	8:46	50	0.0	0.0	8.05	3.9	1.1	0	
2007-Feb-09	8:46	50	0.0	0.0	9.50	3.7	3.0	0	
2007-Feb-09	8:47	37	0.0	0.0	11.41	3.6	4.8	0	
2007-Feb-09	8:47	37	0.0	0.0	13.11	4.0	6.7	0	
2007-Feb-09	8:48	82	0.0	0.0	13.13	2.1	8.3	0	
2007-Feb-09	8:48	55	0.0	0.0	13.14	1.6	9.1	0	
2007-Feb-09	8:49	46	0.0	0.0	13.12	1.6	9.9	0	
2007-Feb-09	8:49	9	0.0	0.0	12.67	0.0	10.5	0	
2007-Feb-09	8:50	14	0.0	0.0	8.84	1.0	10.7	0	
2007-Feb-09	8:50	14	0.0	0.0	10.90	1.1	11.2	0	
2007-Feb-09	8:51	9	0.0	0.0	13.81	1.4	11.8	0	
2007-Feb-09	8:51	9	0.0	0.0	13.85	1.4	12.5	0	
2007-Feb-09	8:52	41	0.0	0.0	13.82	1.5	13.0	0	
2007-Feb-09	8:52	41	0.0	0.0	13.85	1.5	13.8	0	
2007-Feb-09	8:53	46	0.0	0.0	13.85	1.5	14.5	0	
2007-Feb-09	8:53	46	0.0	0.0	13.85	1.5	15.2	0	
2007-Feb-09	8:54	5	0.0	0.0	13.37	0.0	15.4	0	
2007-Feb-09	8:54	5	0.0	0.0	13.28	0.0	15.4	0	
2007-Feb-09	8:55	14	0.0	0.0	12.92	0.0	15.4	0	
2007-Feb-09	8:55	18	0.0	0.0	12.46	0.0	15.4	0	
2007-Feb-09	8:56	18	0.0	0.0	12.01	0.0	15.4	0	
2007-Feb-09	8:56	18	0.1	0.0	11.63	0.0	15.4	0	
2007-Feb-09	8:57	18	0.0	0.1	11.23	0.0	15.4	0	
2007-Feb-09	8:57	23	0.0	0.1	11.16	0.0	15.4	0	
2007-Feb-09	8:58	41	0.0	0.1	10.88	0.0	15.4	0	
2007-Feb-09	8:58	46	0.0	0.1	10.61	0.0	15.4	0	
2007-Feb-09	8:58	55	0.0	0.1	10.57	0.0	15.4	0	
2007-Feb-09	8:58								Reset Total, Vol = 0.09 bbl
2007-Feb-09	8:59	320	3.3	0.5	9.52	4.0	0.3	0	
2007-Feb-09	8:59	453	1.0	1.3	11.21	5.2	1.6	0	
2007-Feb-09	8:59								Start Cement Slurry
2007-Feb-09	8:59	389	4.0	2.0	12.14	3.8	2.5	0	
2007-Feb-09	9:00	394	4.0	4.0	13.59	3.8	4.4	0	
2007-Feb-09	9:00	439	0.4	4.3	13.98	5.2	7.0	0	
2007-Feb-09	9:01	302	4.0	5.3	13.82	3.8	9.3	0	
2007-Feb-09	9:01	275	4.0	7.3	13.43	3.8	11.2	0	
2007-Feb-09	9:02	243	4.0	9.3	13.66	3.8	13.1	0	
2007-Feb-09	9:02	229	3.9	11.2	13.83	3.8	15.0	0	
2007-Feb-09	9:03	192	4.0	13.2	13.81	3.8	16.9	0	
2007-Feb-09	9:03	179	4.0	15.2	13.80	3.8	18.8	0	
2007-Feb-09	9:04	169	4.0	17.2	13.78	3.9	20.7	0	
2007-Feb-09	9:04	169	4.0	19.2	13.79	3.8	22.6	0	
2007-Feb-09	9:05	169	4.0	21.2	13.77	3.9	24.6	0	
2007-Feb-09	9:05	165	4.0	23.2	13.80	3.8	26.5	0	
2007-Feb-09	9:06	156	4.0	25.1	13.77	3.9	28.4	0	
2007-Feb-09	9:06	156	4.0	27.1	13.75	3.8	30.3	0	
2007-Feb-09	9:07	73	2.7	28.8	13.56	2.4	32.0	0	
2007-Feb-09	9:07	87	2.7	30.2	13.57	2.6	33.2	0	

RECEIVED
KANSAS CORPORATION COMMISSION

MAY 29 2007

CONSERVATION DIVISION
WICHITA, KS

Well		Field			Service Date		Customer		Job Number
BIRD C #1		LETTE			0740-Feb-09		OXY RESOURCES CALIFORNIA LLC		2205553384
Date	Time	Treating Pressure	Flow Rate	Volume	CMT DENS	Flowmeter Rate	Flowmeter Tot	0	Message
	24 hr clock	psi	bbl/min	bbl	lb/gal	bbl/min	bbl	0	
2007-Feb-09	9:07	27	0.6	30.8	13.21	0.7	33.9	0	
2007-Feb-09	9:07								End Cement Slurry
2007-Feb-09	9:07	27	0.0	30.8	12.30	0.0	33.9	0	
2007-Feb-09	9:07								Reset Total, Vol = 30.84 bbl
2007-Feb-09	9:08	23	0.0	0.0	12.41	0.0	0.0	0	
2007-Feb-09	9:08	18	0.1	0.1	12.86	0.0	0.0	0	
2007-Feb-09	9:09	18	0.0	0.1	13.37	0.0	0.0	0	
2007-Feb-09	9:09	23	0.0	0.1	13.42	0.0	0.0	0	
2007-Feb-09	9:10	128	0.0	0.1	8.55	3.4	0.6	0	
2007-Feb-09	9:10	215	0.0	0.1	8.29	5.0	3.0	0	
2007-Feb-09	9:11	233	0.0	0.1	8.31	5.3	5.4	0	
2007-Feb-09	9:11	233	0.0	0.1	8.30	7.6	8.8	0	
2007-Feb-09	9:12	233	0.0	0.1	8.27	5.5	12.4	0	
2007-Feb-09	9:12	197	0.0	0.1	8.00	10.0	15.4	0	
2007-Feb-09	9:13	233	0.0	0.1	8.39	6.8	16.6	0	
2007-Feb-09	9:13	247	0.0	0.1	8.31	0.0	18.6	0	
2007-Feb-09	9:14	32	0.0	0.1	8.31	0.0	18.6	0	
2007-Feb-09	9:14	37	1.7	0.1	8.28	1.1	18.6	0	
2007-Feb-09	9:15	156	6.6	3.1	8.31	6.7	21.5	0	
2007-Feb-09	9:15	142	6.6	6.4	8.31	6.7	24.9	0	
2007-Feb-09	9:16	146	6.6	9.7	8.31	6.8	28.3	0	
2007-Feb-09	9:16	146	6.6	13.1	8.31	6.8	31.6	0	
2007-Feb-09	9:17	146	6.6	16.4	8.31	6.7	35.0	0	
2007-Feb-09	9:17	146	6.6	19.7	8.31	6.8	38.4	0	
2007-Feb-09	9:18	142	6.6	23.0	8.32	6.8	41.7	0	
2007-Feb-09	9:18	137	6.6	26.3	8.31	6.8	45.1	0	
2007-Feb-09	9:18	137	6.6	27.4	8.32	6.8	46.2	0	
2007-Feb-09	9:18								Drop Top Plug
2007-Feb-09	9:18								Start Displacement
2007-Feb-09	9:18	142	6.6	27.5	8.32	6.8	46.4	0	
2007-Feb-09	9:19	137	6.6	29.6	8.31	6.8	28.1	0	
2007-Feb-09	9:19	142	6.6	32.9	8.32	6.7	31.5	0	
2007-Feb-09	9:20	137	6.6	36.2	8.31	6.8	34.9	0	
2007-Feb-09	9:20	137	6.6	39.6	8.31	6.8	38.2	0	
2007-Feb-09	9:21	137	6.6	42.9	8.31	6.8	41.6	0	
2007-Feb-09	9:21	142	6.6	46.2	8.31	6.8	45.0	0	
2007-Feb-09	9:22	137	6.6	49.5	8.31	6.8	48.4	0	
2007-Feb-09	9:22	137	6.6	52.8	8.31	6.7	51.7	0	
2007-Feb-09	9:23	142	6.6	56.1	8.31	6.8	55.1	0	
2007-Feb-09	9:23	137	6.6	59.4	8.31	6.8	58.5	0	
2007-Feb-09	9:24	133	6.6	62.7	8.32	6.8	61.9	0	
2007-Feb-09	9:24	137	6.6	66.1	8.31	6.8	65.2	0	
2007-Feb-09	9:25	137	6.6	69.4	8.31	6.8	68.6	0	
2007-Feb-09	9:25	137	6.6	72.7	8.31	6.8	72.0	0	
2007-Feb-09	9:26	137	6.6	76.0	8.31	6.8	75.4	0	
2007-Feb-09	9:26	137	6.6	79.3	8.31	6.8	78.7	0	
2007-Feb-09	9:27	142	6.6	82.6	8.31	6.7	82.1	0	
2007-Feb-09	9:27	142	6.6	85.9	8.31	6.8	85.5	0	
2007-Feb-09	9:28	137	6.6	89.3	8.31	6.8	88.9	0	
2007-Feb-09	9:28	137	6.6	92.6	8.31	6.8	92.3	0	
2007-Feb-09	9:29	137	6.6	95.9	8.32	6.8	95.6	0	
2007-Feb-09	9:29	137	6.6	99.2	8.31	6.8	99.0	0	
2007-Feb-09	9:30	110	6.2	102.5	8.31	6.8	102.4	0	
2007-Feb-09	9:30	69	3.9	104.7	8.31	4.1	104.7	0	

RECEIVED
KANSAS CORPORATION COMMISSION

MAY 29 2007

CONSERVATION DIVISION
WICHITA, KS

Well		Field			Service Date		Customer		Job Number
BIRD C #1		LETTE			0740-Feb-09		OXY RESOURCES CALIFORNIA LLC		220553384
Date	Time	Treating Pressure	Flow Rate	Volume	CMT DENS	Flowmeter Rate	Flowmeter Tot	0	Message
	24 hr clock	psi	bbbl/min	bbbl	lb/gal	bbbl/min	bbbl	0	
2007-Feb-09	9:31	69	3.9	106.6	8.31	4.1	106.8	0	
2007-Feb-09	9:31	69	3.9	108.6	8.31	4.1	108.8	0	
2007-Feb-09	9:32	105	3.9	110.5	8.31	4.0	110.9	0	
2007-Feb-09	9:32	174	3.9	112.5	8.31	4.0	112.9	0	
2007-Feb-09	9:33	206	3.9	114.5	8.31	4.0	114.9	0	
2007-Feb-09	9:33	243	3.9	116.4	8.31	4.0	116.9	0	
2007-Feb-09	9:34	288	3.9	118.4	8.31	4.0	118.9	0	
2007-Feb-09	9:34	316	3.9	120.3	8.31	4.0	120.8	0	
2007-Feb-09	9:35	343	3.9	122.3	8.31	3.9	122.8	0	
2007-Feb-09	9:35	371	3.9	124.2	8.31	3.9	124.8	0	
2007-Feb-09	9:36	380	2.5	126.0	8.31	2.5	126.7	0	
2007-Feb-09	9:36	407	2.5	127.3	8.31	2.5	127.9	0	
2007-Feb-09	9:37	394	2.5	128.5	8.31	2.5	129.2	0	
2007-Feb-09	9:37	412	2.5	129.7	8.31	2.5	130.4	0	
2007-Feb-09	9:38	453	2.5	131.0	8.31	2.5	131.7	0	
2007-Feb-09	9:38	504	2.5	132.2	8.31	2.5	132.9	0	
2007-Feb-09	9:39	504	2.5	133.5	8.31	2.5	134.2	0	
2007-Feb-09	9:39	536	2.5	134.7	8.31	2.5	135.4	0	
2007-Feb-09	9:40	952	0.0	135.6	8.31	0.9	136.6	0	
2007-Feb-09	9:40								Bump Top Plug
2007-Feb-09	9:40	929	0.0	135.6	8.31	0.2	136.7	0	
2007-Feb-09	9:40	998	0.0	135.6	8.31	0.2	136.7	0	
2007-Feb-09	9:40								End Displacement
2007-Feb-09	9:40	934	0.0	135.6	8.31	0.2	136.7	0	
2007-Feb-09	9:40								Reset Total, Vol = 135.55 bbl
2007-Feb-09	9:40	980	0.0	0.0	8.31	0.0	0.0	0	
2007-Feb-09	9:41	476	0.0	0.0	8.31	0.0	0.0	0	
2007-Feb-09	9:41								End Job
2007-Feb-09	9:41	27	0.0	0.0	8.31	0.0	0.0	0	

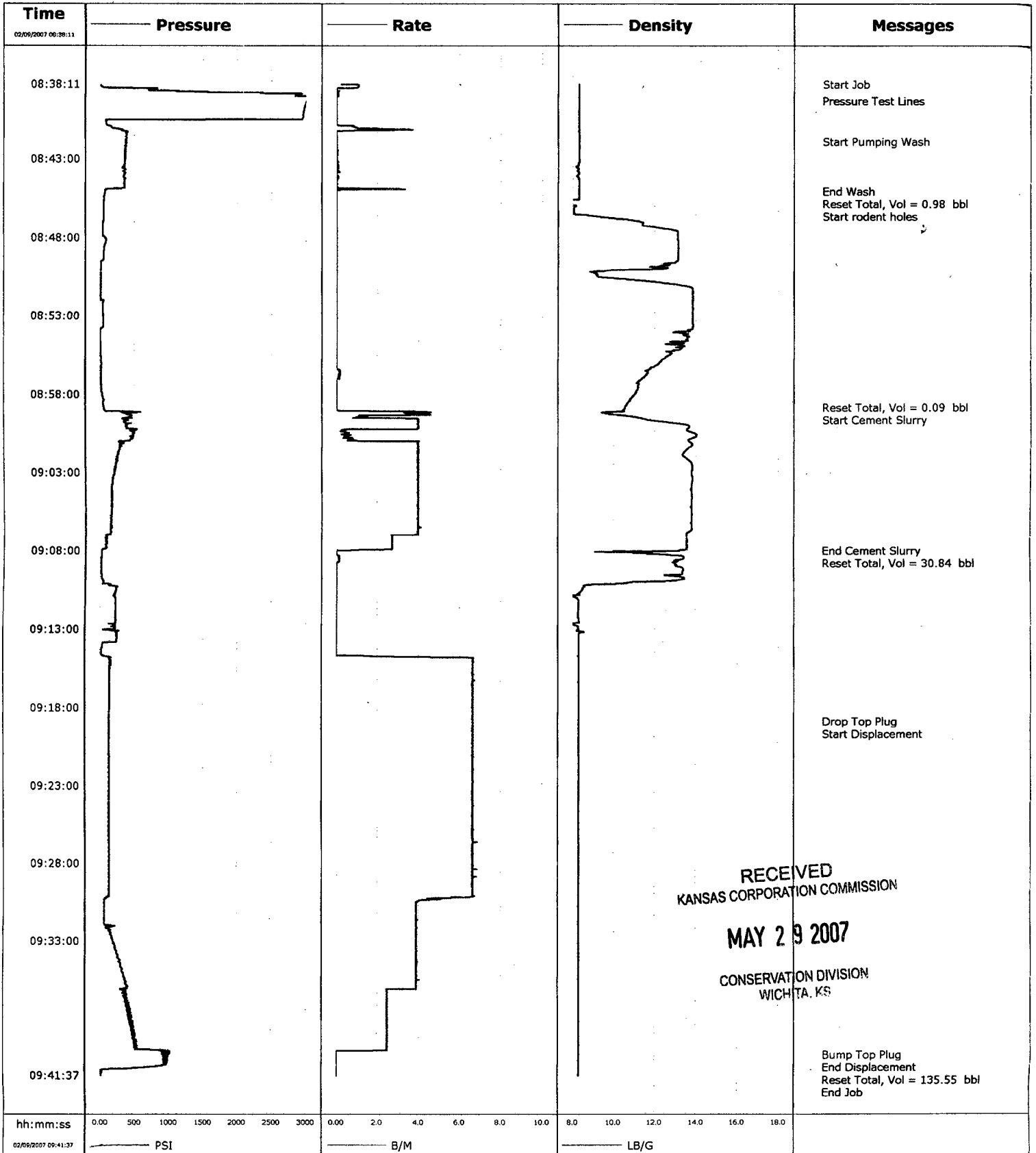
Post Job Summary									
Average Pump Rates, bpm					Volume of Fluid Injected, bbl				
Slurry	N2	Mud	Maximum Rate	Total Slurry	Mud	Spacer	N2		
5			6.5	30	0	20			
Treating Pressure Summary, psi					Breakdown Fluid				
Maximum	Final	Average	Bump Plug to	Breakdown	Volume	Density			
			950			lb/gal			
Avg. N2 Percent	Designed Slurry Volume	Displacement	Mix Water Temp		<input type="checkbox"/> Cement Circulated to Surface?	Volume			
%	30 bbl	134 bbl	°F		<input type="checkbox"/> Washed Thru Perfs	To	ft		
Customer or Authorized Representative			Schlumberger Supervisor						
Willimon, Wes			Timothy Ahrends			<input type="checkbox"/> CirculationLost <input checked="" type="checkbox"/> Job Completed			

RECEIVED
KANSAS CORPORATION COMMISSION

MAY 29 2007

CONSERVATION DIVISION
WICHITA, KS

Well	Bird C 1	Client	OXY
Field		SIR No.	2205553384
Engineer		Job Type	Production
Country	United States	Job Date	02-09-2007



RECEIVED
KANSAS CORPORATION COMMISSION
MAY 29 2007
CONSERVATION DIVISION
WICHITA, KS

5/24/08



OXY USA Inc.
1701 N. Kansas
P.O. Box 2528
Liberal, Kansas 67905

May 24, 2007

Kansas State Corporation Commission
Conservation Division, Finney State Office Building
130 S. Market, Room 2078
Wichita, KS 67202-3802

RE: BIRD C-1
SE/4 S-36 R-30S T-32W
Haskell County, Kansas
API NO: 15-081-21700

KCC
MAY 24 2007
CONFIDENTIAL

Dear Sir:

Please file confidential. The following items are being submitted for the above referenced well which was recently drilled and has been temporarily abandoned.

1. KANSAS STATE FORM ACO-1 + 2 copies
2. CEMENT REPORTS
3. GEOLOGICAL REPORT
4. A SET OF ELECTRIC LOGS
5. TEMPORARY ABANDONMENT WELL APPLICATION-FORM CP111

If there are any questions or you require further information, please contact me at the above address or by phone at (620) 629-4229.

Sincerely,

A handwritten signature in black ink, appearing to read "Rafael Bacigalupo", written over a circular stamp.

Rafael Bacigalupo
Capital Projects

Enclosures

Cc: OXY - Houston
OXY - Well File

RECEIVED
KANSAS CORPORATION COMMISSION

MAY 29 2007

CONSERVATION DIVISION
WICHITA, KS