

**CONFIDENTIAL**

**CONFIDENTIAL**

**ORIGINAL**

5/8/08

KANSAS CORPORATION COMMISSION  
OIL & GAS CONSERVATION DIVISION  
**WELL COMPLETION FORM**  
WELL HISTORY - DESCRIPTION OF WELL & LEASE

Form ACO-1  
September 1999  
Form Must Be Typed

Operator: License # 5447  
Name: OXY USA Inc.  
Address: P.O. Box 2528  
City/State/Zip: Liberal, KS 67905  
Purchaser: NA  
Operator Contact Person: Rafael Bacigalupo  
Phone: (620) 629-4200  
Contractor: Name: Murfin Drilling Co., Inc.  
License: 30606  
Wellsite Geologist: NA

API No. 15 - 081-21698-00-00  
County: Haskell  
c - NW - NW - NE Sec 22 Twp. 30S S. R. 32W  
330 feet from S / N (circle one) Line of Section  
2310 feet from E / W (circle one) Line of Section  
Footages Calculated from Nearest Outside Section Corner:  
(circle one) NE SE NW SW  
Lease Name: Cook B Well #: 1  
Field Name: \_\_\_\_\_  
Producing Formation: NA/TA'd

**KCC**

MAY 08 2007

**CONFIDENTIAL**

Designate Type of Completion:  
 New Well  Re-Entry  Workover  
 Oil  SWD  SIOW  Temp. Abd.  
 Gas  ENHR  SIGW  
 Dry  Other (Core, WSW, Expl, Cathodic, etc)  
If Workover/Re-entry: Old Well Info as follows:  
Operator: \_\_\_\_\_  
Well Name: \_\_\_\_\_

Elevation: Ground: 2870 Kelly Bushing: 2881  
Total Depth: 5800 Plug Back Total Depth: 5740  
Amount of Surface Pipe Set and Cemented at 1788 feet  
Multiple Stage Cementing Collar Used?  Yes  No  
If yes, show depth set 3031  
If Alternate II completion, cement circulated from \_\_\_\_\_  
feet depth to \_\_\_\_\_ w/ \_\_\_\_\_ sx cmt.

Original Comp. Date: \_\_\_\_\_ Original Total Depth: \_\_\_\_\_  
 Deepening  Re-perf.  Conv. To Enhr./SWD  
 Plug Back  Plug Back Total Depth  
 Commingled Docket No. \_\_\_\_\_  
 Dual Completion Docket No. \_\_\_\_\_  
 Other (SWD or Enhr.?) Docket No. \_\_\_\_\_  
01/17/07 01/26/07 03/14/07  
Spud Date or Date Reached TD Completion Date or Recompletion Date

Drilling Fluid Management Plan A4INH 6-11-08  
(Data must be collected from the Reserve Pit)  
Chloride content 5600 mg/l ppm Fluid volume 1550 bbls  
Dewatering method used Evaporation  
Location of fluid disposal if hauled offsite:  
Operator Name: \_\_\_\_\_  
Lease Name: \_\_\_\_\_ License No.: \_\_\_\_\_  
Quarter \_\_\_\_\_ Sec. \_\_\_\_\_ Twp, \_\_\_\_\_ S. R.  East  West  
County: \_\_\_\_\_ Docket No.: \_\_\_\_\_

INSTRUCTIONS: An original and two copies of this form shall be filed with the Kansas Corporation Commission, 130 S. Market - Room 2078, Wichita, Kansas 6702, within 120 days of the spud date, recompletion, workover or conversion of a well. Rule 82-3-130, 82-3-106 and 82-3-107 apply. Information of side two of this form will be held confidential for a period of 12 months if requested in writing and submitted with the form (see rule 82-3-107 for confidentiality in excess of 12 months). One copy of all wireline logs and geologist well report shall be attached with this form. ALL CEMENTING TICKETS MUST BE ATTACHED. Submit CP-4 form with all plugged wells. Submit CP-111 form with all temporarily abandoned wells.

All requirements of the statutes, rules and regulations promulgated to regulate the oil and gas industry have been fully complied with and the statements herein are complete and correct to the best of my knowledge.

Signature: \_\_\_\_\_  
Title: Capital Project Date 05/08/2007  
Subscribed and sworn to before me this 8th day of May  
20 07  
Notary Public: Anita Peterson  
Date Commission Expires: Oct. 1, 2009

**KCC Office Use Only**  
 Letter of Confidentiality Attached  
If Denied, Yes  Date: \_\_\_\_\_  
 Wireline Log Received  
 Geologist Report Received  
\_\_\_\_\_  
UIC Distribution  
**RECEIVED**  
**KANSAS CORPORATION COMMISSION**  
**MAY 09 2007**

**ANITA PETERSON**  
Notary Public - State of Kansas  
My Appt. Expires October 1, 2009

CONSERVATION DIVISION  
WICHITA, KS

JAN 1980

Side Two

Operator Name: OXY USA Inc. Lease Name: Cook B Well #: 1

Sec. 22 Twp. 30 S. R. 32W  East  West County: Haskell

**Instructions:** Show important tops and base of formations penetrated. Detail all cores. Report all final copies of drill stems tests giving interval tested, time tool open and closed, flowing and shut-in pressures, whether shut-in pressure reached static level, hydrostatic pressures, bottom hole temperature, fluid recovery, and flow rates if gas to surface test, along with final chart(s). Attach extra sheet if more space is needed. Attach copy of all Electric Wireline Logs surveyed. Attach final geological well site report.

<p>Drill Stem Tests Taken <input type="checkbox"/> Yes <input checked="" type="checkbox"/> No <i>(Attach Additional Sheets)</i></p> <p>Samples Sent to Geological Survey <input type="checkbox"/> Yes <input checked="" type="checkbox"/> No</p> <p>Cores Taken <input type="checkbox"/> Yes <input checked="" type="checkbox"/> No</p> <p>Electric Log Run <input checked="" type="checkbox"/> Yes <input type="checkbox"/> No <i>(Submit Copy)</i></p> <p>List All E. Logs Run:</p> <p style="padding-left: 20px;">Cement Bond Log</p> <p style="padding-left: 20px;">Microlog Long Spaced Sonic</p> <p style="padding-left: 20px;">Spectral Density Dual Spaced Neutron</p> <p style="padding-left: 20px;">High Resolution Induction</p> <p style="padding-left: 20px;">Annular Hole Volume Plot</p>	<table border="0" style="width: 100%;"> <tr> <td><input checked="" type="checkbox"/> Log</td> <td>Formation (Top), Depth and Datum</td> <td><input type="checkbox"/> Sample</td> </tr> <tr> <td>Name</td> <td>Top</td> <td>Datum</td> </tr> <tr> <td>Heebner</td> <td>4139</td> <td>-1258</td> </tr> <tr> <td>Lansing</td> <td>4204</td> <td>-1323</td> </tr> <tr> <td>Marmaton</td> <td>4831</td> <td>-1950</td> </tr> <tr> <td>Cherokee</td> <td>4994</td> <td>-2113</td> </tr> <tr> <td>Morrow</td> <td>5307</td> <td>-2426</td> </tr> <tr> <td>Chester</td> <td>5361</td> <td>-2480</td> </tr> <tr> <td>St. Genevieve</td> <td>5504</td> <td>-2623</td> </tr> <tr> <td>St. Louis</td> <td>5599</td> <td>-2718</td> </tr> </table>	<input checked="" type="checkbox"/> Log	Formation (Top), Depth and Datum	<input type="checkbox"/> Sample	Name	Top	Datum	Heebner	4139	-1258	Lansing	4204	-1323	Marmaton	4831	-1950	Cherokee	4994	-2113	Morrow	5307	-2426	Chester	5361	-2480	St. Genevieve	5504	-2623	St. Louis	5599	-2718
<input checked="" type="checkbox"/> Log	Formation (Top), Depth and Datum	<input type="checkbox"/> Sample																													
Name	Top	Datum																													
Heebner	4139	-1258																													
Lansing	4204	-1323																													
Marmaton	4831	-1950																													
Cherokee	4994	-2113																													
Morrow	5307	-2426																													
Chester	5361	-2480																													
St. Genevieve	5504	-2623																													
St. Louis	5599	-2718																													

CASING RECORD <input checked="" type="checkbox"/> New <input type="checkbox"/> Used							
Report all strings set-conductor, surface, intermediate, production, etc.							
Purpose of String	Size Hole Drilled	Size Casing Set (in. O.D.)	Weight Lbs./ft.	Setting Depth	Type of Cement	# Sacks Used	Type and Percent Additives
Conductor					C		
Surface	12 1/4	8 5/8	24	1788	C	585	Poz C + additives
					C	195	Class C + additives
Production	7 7/8	5 1/2	17	5597	C	130	Poz H + additives
						185	D903 + additives

**ADDITIONAL CEMENTING / SQUEEZE RECORD**

Purpose:	Depth Top Bottom	Type of Cement	#Sacks Used	Type and Percent Additives
<input type="checkbox"/> Perforate				
<input type="checkbox"/> Protect Casing	-			
<input type="checkbox"/> Plug Back TD				
<input type="checkbox"/> Plug off Zone	-			

Shots Per Foot	PERFORATION RECORD - Bridge Plugs Set/type Specify Footage of Each Interval Perforated	Acid, Fracture, Shot, Cement Squeeze Record (Amount and Kind of Material Used)	Depth
4	5371-5379	64 bbls acid FE + additives	
		51,996 gals YE-115LG X-link foamed @ 70% N2; 83,755# 20/40 Sand	
8	5361-5371		

TUBING RECORD		Size	Set At	Packer At	Liner Run
		2 3/8	5400		<input type="checkbox"/> Yes <input checked="" type="checkbox"/> No
Date of First, Resumed Production, SWD or Enhr.		Producing Method			
N/A		<input type="checkbox"/> Flowing <input type="checkbox"/> Pumping <input type="checkbox"/> Gas Lift <input checked="" type="checkbox"/> Other (Explain) P&A TA'd			
Estimated Production Per 24 Hours	Oil BBLS	Gas Mcf	Water Bbls	Gas-Oil Ratio	Gravity
	0	0	0		

Disposition of Gas	METHOD OF COMPLETION	Production Interval
<input type="checkbox"/> Vented <input type="checkbox"/> Sold <input type="checkbox"/> Used on Lease <i>(If vented, Submit ACO-18)</i>	<input type="checkbox"/> Open Hole <input checked="" type="checkbox"/> Perf. <input type="checkbox"/> Dually Comp. <input type="checkbox"/> Commingled <input type="checkbox"/> Other (Specify) _____	_____



# Cementing Service Report

Customer <b>OXY RESOURCE CALIFORNIA LLC</b>						Job Number <b>2205553061</b>									
Well <b>COOK B #1</b>			Location (legal)			Schlumberger Location <b>Perryton, TX</b>			Job Start <b>2007-Jan-18</b>						
Field		Formation Name/Type			Deviation		Bit Size <b>12.3 in</b>	Well MD <b>1,788 ft</b>	Well TVD <b>1,788 ft</b>						
County <b>HASKELL</b>		State/Province <b>KANSAS</b>			BHP <b>psi</b>	BHST <b>98 °F</b>	BHCT <b>°F</b>	Pore Press. Gradient <b>psi/ft</b>							
Well Master: <b>0630887950</b>		API / UWI:			Casing/Liner										
Rig Name <b>MURFIN 20</b>		Drilled For <b>Oil &amp; Gas</b>		Service Via		Depth, ft <b>1788</b>	Size, in <b>8.63</b>	Weight, lb/ft <b>24</b>	Grade	Thread <b>8RD</b>					
Offshore Zone		Well Class <b>New</b>		Well Type <b>Exploration</b>		Tubing/Drill Pipe									
Drilling Fluid Type		Max. Density <b>lb/gal</b>		Plastic Viscosity <b>cp</b>		Depth,	Size, in	Weight, lb/ft	Grade	Thread					
Service Line <b>Cementing</b>		Job Type <b>Cem Surface Casing</b>				Perforations/Open Hole									
Max. Allowed Tubing Pressure <b>1500 psi</b>		Max. Allowed Ann. Pressure <b>psi</b>		WellHead Connection <b>8 5/8" H&amp;SM</b>		Top, ft	Bottom, ft	spf	No. of Shots	Total Interval <b>ft</b>					
Service Instructions <b>CEMENT 8 5/8" SURFACE CASING WITH: 10 BBL FRESH WATER 585 SK 35:65 POZ C + 6% D020 + 2% S001 + 0.25 pps D130 195 SK CLASS C + 2% S001 + 0.125 pps D130 DISPLACE WITH FRESH WATER</b>						Diameter <b>in</b>	Treat Down <b>Casing</b>	Displacement <b>111.07 bbl</b>	Packer Type	Packer Depth <b>ft</b>					
						Tubing Vol. <b>bbl</b>	Casing Vol. <b>113.87 bbl</b>	Annular Vol. <b>131.43 bbl</b>	OpenHole Vol <b>260.49 bbl</b>						
						Casing/Tube Secured <input checked="" type="checkbox"/>		1 Hole Volume Circulated prior to Cementing <input type="checkbox"/>		Casing Tools			Squeeze Job		
						Lift Pressure: <b>psi</b>		Pipe Rotated <input type="checkbox"/>		Pipe Reciprocated <input type="checkbox"/>		Shoe Type:		Squeeze Type	
No. Centralizers:		Top Plugs: <b>1</b>		Bottom Plugs:		Shoe Depth: <b>ft</b>		Tool Type:							
Cement Head Type: <b>Single</b>		Stage Tool Type		Tool Depth: <b>ft</b>		Stage Tool Depth: <b>ft</b>		Tail Pipe Size: <b>in</b>							
Job Scheduled For:		Arrived on Location: <b>2007-Jan-18 12:30</b>		Leave Location: <b>2007-Jan-18</b>		Collar Type:		Tail Pipe Depth: <b>ft</b>							
						Collar Depth: <b>ft</b>		Sqz Total Vol: <b>bbl</b>							
Date	Time	Treating Pressure psi	Density lb/gal	CMT RATE bbl/min	CMT VOL bbl	CS NRD TOTAL bbl	CS NRD RATE bbl/min	0	0	Message					
2007-Jan-18	14:54	0	8.36	0.0	0.0	0.0	0.0	0	0						
2007-Jan-18	14:54	0	8.36	0.0	0.0	0.0	0.0	0	0						
2007-Jan-18	14:54									Start Job					
2007-Jan-18	14:54									Start Pumping Spacer					
2007-Jan-18	14:54	0	8.36	0.0	0.0	0.0	0.0	0	0	Pressure Test Lines					
2007-Jan-18	14:54	0	8.36	0.0	0.0	0.0	0.0	0	0						
2007-Jan-18	14:54	0	8.36	0.0	0.0	0.0	0.0	0	0						
2007-Jan-18	14:55	0	8.36	0.0	0.0	0.0	0.0	0	0						
2007-Jan-18	14:55	0	8.36	0.0	0.0	0.0	0.0	0	0						
2007-Jan-18	14:56	0	8.36	0.0	0.0	0.0	0.3	0	0						
2007-Jan-18	14:56	119	8.35	3.0	0.5	1.0	3.0	0	0						
2007-Jan-18	14:57	37	8.35	0.0	1.4	2.1	0.1	0	0						
2007-Jan-18	14:57	32	8.35	0.0	1.4	2.1	0.0	0	0						
2007-Jan-18	14:58	1534	8.35	0.0	1.4	2.1	0.0	0	0						
2007-Jan-18	14:58	1749	8.35	0.0	1.4	2.1	0.0	0	0						
2007-Jan-18	14:59	32	8.35	0.0	1.4	2.1	0.0	0	0						
2007-Jan-18	14:59	215	8.35	6.0	2.8	3.4	6.0	0	0						
2007-Jan-18	15:00	188	8.36	5.5	5.6	6.3	5.6	0	0						
2007-Jan-18	15:00	192	8.36	5.6	8.4	9.2	5.7	0	0						
2007-Jan-18	15:01	188	8.36	5.7	9.8	10.5	5.8	0	0						
2007-Jan-18	15:01									End Spacer					

**KCC**

**MAY 08 2007**

**CONFIDENTIAL**

**RECEIVED  
KANSAS CORPORATION COMMISSION**

**MAY 09 2007**

**CONSERVATION DIVISION  
WICHITA, KS**

Well		Field		Service Date		Customer		Job Number	
COOK B ##1				0718-Jan-18		OXY RESOURCE CALIFORNIA LLC		2205553061	
Date	Time	Treating Pressure	Density	CMT RATE	CMT VOL	CS NRD TOTAL	CS NRD RATE	0	Message
	24 hr clock	psi	lb/gal	bbt/min	bbt	bbt	bbt/min	0	
2007-Jan-18	15:01	188	8.37	5.7	10.0	10.7	5.8	0	
2007-Jan-18	15:01								Start Mixing Lead Slurry
2007-Jan-18	15:01	197	9.09	5.7	10.6	11.4	5.7	0	
2007-Jan-18	15:01								Reset Total, Vol = 0.00 bbl
2007-Jan-18	15:01								Reset Total, Vol = 10.63 bbl
2007-Jan-18	15:01	197	9.96	5.8	0.7	0.7	5.6	0	
2007-Jan-18	15:01	243	12.92	6.0	3.6	3.5	6.1	0	
2007-Jan-18	15:02	238	13.38	6.0	6.6	6.5	6.0	0	
2007-Jan-18	15:02	220	12.88	6.1	9.6	9.5	6.0	0	
2007-Jan-18	15:03	211	12.46	6.3	12.7	12.5	6.4	0	
2007-Jan-18	15:03	197	12.25	6.2	15.8	15.6	6.3	0	
2007-Jan-18	15:04	188	11.93	6.3	19.0	18.7	5.9	0	
2007-Jan-18	15:04	188	11.79	6.4	22.1	21.9	6.6	0	
2007-Jan-18	15:05	192	11.88	6.6	25.4	25.2	6.5	0	
2007-Jan-18	15:05	179	11.74	6.6	28.7	28.4	6.4	0	
2007-Jan-18	15:06	183	11.73	6.7	32.0	31.7	6.3	0	
2007-Jan-18	15:06	188	11.93	6.8	35.3	34.9	6.6	0	
2007-Jan-18	15:07	183	11.82	6.7	38.6	38.3	6.5	0	
2007-Jan-18	15:07	146	11.87	6.2	41.8	41.5	6.2	0	
2007-Jan-18	15:08	146	11.95	6.1	44.9	44.5	6.2	0	
2007-Jan-18	15:08	142	12.09	6.1	47.9	47.6	6.2	0	
2007-Jan-18	15:09	146	12.21	6.3	51.0	50.7	6.2	0	
2007-Jan-18	15:09	142	11.98	6.1	54.1	53.8	6.2	0	
2007-Jan-18	15:10	142	12.05	6.3	57.3	56.9	6.4	0	
2007-Jan-18	15:10	151	12.24	6.3	60.4	60.0	6.3	0	
2007-Jan-18	15:11	146	12.18	6.3	63.5	63.1	5.8	0	
2007-Jan-18	15:11	146	11.94	6.3	66.7	66.1	5.9	0	
2007-Jan-18	15:12	146	12.10	6.4	69.8	69.2	6.5	0	
2007-Jan-18	15:12	146	12.18	6.4	73.0	72.5	6.2	0	
2007-Jan-18	15:13	156	12.37	6.4	76.2	75.6	6.3	0	
2007-Jan-18	15:13	156	12.27	6.4	79.4	78.8	6.6	0	
2007-Jan-18	15:14	151	12.14	6.5	82.6	82.1	6.4	0	
2007-Jan-18	15:14	156	12.24	6.5	85.8	85.3	6.5	0	
2007-Jan-18	15:15	146	11.82	6.4	89.1	88.6	6.5	0	
2007-Jan-18	15:15	142	11.65	6.5	92.3	91.8	6.5	0	
2007-Jan-18	15:16	146	12.01	6.4	95.5	95.0	6.4	0	
2007-Jan-18	15:16	165	12.29	6.6	98.7	98.2	6.5	0	
2007-Jan-18	15:17	156	12.34	6.5	102.0	101.5	6.4	0	
2007-Jan-18	15:17	156	12.20	6.4	105.2	104.7	6.5	0	
2007-Jan-18	15:18	146	12.17	6.4	108.4	107.8	6.6	0	
2007-Jan-18	15:18	146	12.14	6.3	111.6	111.0	6.6	0	
2007-Jan-18	15:19	156	12.40	6.5	114.8	114.2	6.3	0	
2007-Jan-18	15:19	151	12.06	6.4	118.0	117.3	6.6	0	
2007-Jan-18	15:20	151	12.23	6.4	121.2	120.6	6.6	0	
2007-Jan-18	15:20	146	12.24	6.4	124.4	123.8	6.5	0	
2007-Jan-18	15:21	151	12.08	6.4	127.6	127.0	6.4	0	
2007-Jan-18	15:21	146	11.99	6.3	130.8	130.2	6.5	0	
2007-Jan-18	15:22	146	12.27	6.4	134.0	133.4	6.3	0	
2007-Jan-18	15:22	146	12.27	6.3	137.2	136.7	6.4	0	
2007-Jan-18	15:23	137	11.85	6.4	140.4	139.8	6.2	0	
2007-Jan-18	15:23	146	12.17	6.4	143.6	143.0	6.5	0	
2007-Jan-18	15:24	133	11.95	6.3	146.7	146.1	6.2	0	
2007-Jan-18	15:24	142	11.98	6.3	149.9	149.3	6.4	0	
2007-Jan-18	15:25	133	11.61	6.4	153.0	152.5	6.4	0	

**KCC**  
**MAY 08 2007**  
**CONFIDENTIAL**

**RECEIVED**  
**KANSAS CORPORATION COMMISSION**

**MAY 09 2007**

**CONSERVATION DIVISION**  
**WICHITA, KS**

Well			Field		Service Date		Customer		Job Number
COOK B ##1					0718-Jan-18		OXY RESOURCE CALIFORNIA LLC		2205553061
Date	Time	Treating Pressure	Density	CMT RATE	CMT VOL	CS NRD TOTAL	CS NRD RATE	0	Message
	24 hr clock	psi	lb/gal	bbt/min	bbt	bbt	bbt/min	0	
2007-Jan-18	15:25	142	12.16	6.3	156.2	155.6	6.3	0	
2007-Jan-18	15:26	151	12.77	6.3	159.3	158.7	6.4	0	
2007-Jan-18	15:26	105	12.17	5.3	162.2	161.7	5.1	0	
2007-Jan-18	15:27	105	12.65	5.3	164.9	164.4	5.5	0	
2007-Jan-18	15:27	105	12.37	5.3	167.6	167.1	5.3	0	
2007-Jan-18	15:28	105	12.21	5.3	170.2	169.8	5.3	0	
2007-Jan-18	15:28	105	11.98	5.4	172.9	172.4	5.2	0	
2007-Jan-18	15:29	128	12.37	5.9	175.7	175.2	5.7	0	
2007-Jan-18	15:29	128	11.96	6.0	178.6	178.1	6.0	0	
2007-Jan-18	15:30	128	12.01	5.9	181.6	181.1	6.0	0	
2007-Jan-18	15:30	114	11.44	5.8	184.5	184.0	5.9	0	
2007-Jan-18	15:31	137	12.81	5.9	187.5	186.9	5.9	0	
2007-Jan-18	15:31	133	12.22	5.9	190.4	189.9	5.9	0	
2007-Jan-18	15:32	137	12.59	5.9	193.4	192.9	5.7	0	
2007-Jan-18	15:32	137	12.61	5.9	196.3	195.8	6.0	0	
2007-Jan-18	15:33	133	12.31	5.9	199.3	198.7	6.1	0	
2007-Jan-18	15:33	137	12.46	5.9	202.2	201.7	6.0	0	
2007-Jan-18	15:34	128	12.12	5.9	205.2	204.7	6.0	0	
2007-Jan-18	15:34	137	12.17	5.9	208.2	207.6	5.9	0	
2007-Jan-18	15:35	133	11.85	6.0	211.1	210.6	6.0	0	
2007-Jan-18	15:35	137	12.21	6.0	214.1	213.6	6.1	0	
2007-Jan-18	15:36	137	11.93	6.0	217.1	216.6	6.0	0	
2007-Jan-18	15:36	137	12.12	5.9	220.1	219.6	5.5	0	
2007-Jan-18	15:37	142	11.76	6.0	223.1	222.5	7.1	0	
2007-Jan-18	15:37								End Lead Slurry
2007-Jan-18	15:37	128	12.53	6.0	223.5	223.0	6.9	0	
2007-Jan-18	15:37	146	12.66	6.1	223.6	223.1	6.5	0	
2007-Jan-18	15:37								Start Mixing Tail Slurry
2007-Jan-18	15:37								Reset Total, Vol = 223.78 bbl
2007-Jan-18	15:37	151	12.95	6.0	223.8	223.3	6.1	0	
2007-Jan-18	15:37	183	14.08	6.1	2.3	2.4	5.9	0	
2007-Jan-18	15:38	183	14.15	6.1	5.3	5.4	6.1	0	
2007-Jan-18	15:38	201	15.04	6.1	8.4	8.4	6.1	0	
2007-Jan-18	15:39	211	15.07	6.1	11.4	11.5	6.1	0	
2007-Jan-18	15:39	188	14.77	6.0	14.4	14.5	6.1	0	
2007-Jan-18	15:40	201	14.82	6.1	17.5	17.6	6.1	0	
2007-Jan-18	15:40	183	14.36	6.2	20.5	20.6	6.2	0	
2007-Jan-18	15:41	179	14.68	6.0	23.6	23.7	6.0	0	
2007-Jan-18	15:41	179	14.52	6.1	26.6	26.7	6.1	0	
2007-Jan-18	15:42	174	14.60	6.0	29.6	29.8	6.1	0	
2007-Jan-18	15:42	183	14.59	6.1	32.7	32.8	6.1	0	
2007-Jan-18	15:43	188	14.82	6.0	35.7	35.9	6.0	0	
2007-Jan-18	15:43	179	14.88	6.1	38.7	38.9	6.2	0	
2007-Jan-18	15:44	183	14.88	6.0	41.7	41.9	6.0	0	
2007-Jan-18	15:44	179	14.78	6.0	44.7	44.9	6.0	0	
2007-Jan-18	15:45	169	14.54	6.0	47.7	47.9	6.0	0	
2007-Jan-18	15:45								End Tail Slurry
2007-Jan-18	15:45	-5	14.46	0.0	49.9	50.4	1.7	0	
2007-Jan-18	15:45								Drop Top Plug
2007-Jan-18	15:45	-5	14.44	0.0	49.9	50.4	0.9	0	
2007-Jan-18	15:45								Start Displacement
2007-Jan-18	15:45	-5	14.44	0.0	49.9	50.5	0.7	0	
2007-Jan-18	15:45	-5	14.44	0.0	49.9	50.5	0.2	0	
2007-Jan-18	15:45								Reset Total, Vol = 49.94 bbl

**KCC**  
**MAY 08 2007**  
**CONFIDENTIAL**  
**RECEIVED**  
**KANSAS CORPORATION COMMISSION**  
**MAY 09 2007**  
**CONSERVATION DIVISION**  
**WICHITA, KS**

Well		Field		Service Date		Customer		Job Number	
COOK B #1				0718-Jan-18		OXY RESOURCE CALIFORNIA LLC		2205553061	
Date	Time	Treating Pressure	Density	CMT RATE	CMT VOL	CS NRD TOTAL	CS NRD RATE	0	Message
	24 hr clock	psi	lb/gal	bbl/min	bbl	bbl	bbl/min	0	
2007-Jan-18	15:46	-9	14.46	0.0	0.0	0.0	0.0	0	
2007-Jan-18	15:46	-9	11.49	0.0	0.0	0.0	0.0	0	
2007-Jan-18	15:47	-9	10.44	0.0	0.0	0.0	0.0	0	
2007-Jan-18	15:47	-9	10.15	0.0	0.0	0.0	0.0	0	
2007-Jan-18	15:48	-9	9.87	0.0	0.0	0.0	0.0	0	
2007-Jan-18	15:48	-9	9.63	0.0	0.0	0.0	0.0	0	
2007-Jan-18	15:49	-9	9.44	0.0	0.0	0.0	0.0	0	
2007-Jan-18	15:49	60	8.83	3.6	0.0	0.9	4.8	0	
2007-Jan-18	15:50	96	8.73	6.1	1.7	3.5	5.8	0	
2007-Jan-18	15:50	334	8.36	2.9	4.7	6.6	4.8	0	
2007-Jan-18	15:51	60	8.35	5.6	7.3	9.4	5.9	0	
2007-Jan-18	15:51	64	8.44	5.5	10.1	12.3	5.9	0	
2007-Jan-18	15:52	69	8.44	5.7	12.9	15.2	5.8	0	
2007-Jan-18	15:52	82	8.35	5.9	15.8	18.2	6.0	0	
2007-Jan-18	15:53	92	8.35	5.8	18.6	21.2	6.0	0	
2007-Jan-18	15:53	105	8.37	5.8	21.5	24.1	6.0	0	
2007-Jan-18	15:54	119	8.35	5.8	24.5	27.2	6.0	0	
2007-Jan-18	15:54	133	8.35	5.9	27.4	30.2	6.0	0	
2007-Jan-18	15:55	133	8.35	5.8	30.3	33.2	6.0	0	
2007-Jan-18	15:55	142	8.35	5.9	33.2	36.2	6.0	0	
2007-Jan-18	15:56	165	8.35	5.9	36.1	39.2	6.0	0	
2007-Jan-18	15:56	169	8.35	5.9	39.1	42.2	6.0	0	
2007-Jan-18	15:57	183	8.35	5.9	42.0	45.2	6.1	0	
2007-Jan-18	15:57	188	8.35	5.9	45.0	48.2	6.0	0	
2007-Jan-18	15:58	197	8.35	5.9	47.9	51.3	6.1	0	
2007-Jan-18	15:58	215	8.35	5.8	50.8	54.3	6.0	0	
2007-Jan-18	15:59	233	8.35	5.8	53.8	57.3	6.0	0	
2007-Jan-18	15:59	233	8.35	5.8	56.7	60.3	6.0	0	
2007-Jan-18	16:00	252	8.35	5.9	59.6	63.3	6.0	0	
2007-Jan-18	16:00	284	8.35	6.0	62.6	66.3	6.1	0	
2007-Jan-18	16:01	307	8.35	6.0	65.5	69.3	6.1	0	
2007-Jan-18	16:01	320	8.35	6.1	68.6	72.4	6.2	0	
2007-Jan-18	16:02	334	8.35	6.0	71.6	75.5	6.1	0	
2007-Jan-18	16:02	348	8.35	6.0	74.6	78.6	6.2	0	
2007-Jan-18	16:03	380	8.35	6.0	77.6	81.6	6.1	0	
2007-Jan-18	16:03	394	8.35	6.0	80.6	84.7	6.2	0	
2007-Jan-18	16:04	435	8.35	6.1	83.6	87.8	6.2	0	
2007-Jan-18	16:04	449	8.35	6.2	86.7	90.9	6.3	0	
2007-Jan-18	16:05	471	8.35	6.2	89.8	94.1	6.3	0	
2007-Jan-18	16:05	398	8.35	3.1	92.3	96.8	3.2	0	
2007-Jan-18	16:06	417	8.35	3.7	94.0	98.5	3.7	0	
2007-Jan-18	16:06	421	8.35	3.7	95.9	100.4	3.8	0	
2007-Jan-18	16:07	435	8.34	3.7	97.7	102.3	3.7	0	
2007-Jan-18	16:07	453	8.35	3.7	99.5	104.1	3.7	0	
2007-Jan-18	16:08	449	8.35	3.6	101.4	106.0	3.7	0	
2007-Jan-18	16:08	439	8.35	2.6	102.8	107.5	2.5	0	
2007-Jan-18	16:09	453	8.35	2.5	104.1	108.8	2.5	0	
2007-Jan-18	16:09	458	8.35	2.5	105.3	110.1	2.5	0	
2007-Jan-18	16:10	462	8.34	2.5	106.5	111.3	2.5	0	
2007-Jan-18	16:10	481	8.34	2.5	107.8	112.6	2.5	0	
2007-Jan-18	16:11	829	8.34	2.4	109.0	113.8	2.5	0	
2007-Jan-18	16:11	1057	8.34	0.0	109.2	114.1	0.0	0	
2007-Jan-18	16:12	-5	8.34	0.0	109.2	114.1	0.0	0	

**KCC**  
**MAY 08 2007**  
**CONFIDENTIAL**  
  
**RECEIVED**  
**KANSAS CORPORATION COMMISSION**  
  
**MAY 09 2007**  
  
**CONSERVATION DIVISION**  
**WICHITA, KS**

Well		COOK B ##1		Field		Service Date		0718-Jan-18		Customer		OXY RESOURCE CALIFORNIA LLC		Job Number		2205553061					
Date	Time	Treating Pressure	Density	CMT RATE	CMT VOL	CS NRD TOTAL	CS NRD RATE	0	Message												
	24 hr clock	psi	lb/gal	bbl/min	bbl	bbl	bbl/min	0													
<b>Post Job Summary</b>																					
Average Pump Rates, bpm						Volume of Fluid Injected, bbl															
Slurry	N2	Mud	Maximum Rate	Total Slurry	Mud	Spacer	N2														
5			6	273.5		10															
Treating Pressure Summary, psi						Breakdown Fluid															
Maximum	Final	Average	Bump Plug to	Breakdown	Volume						Density										
500		250	1054		bbl						8.34 lb/gal										
Avg. N2 Percent		Designed Slurry Volume		Displacement		Mix Water Temp		<input checked="" type="checkbox"/> Cement Circulated to Surface?		Volume		80 bbl									
%		273.5 bbl		111.07 bbl		°F		<input type="checkbox"/> Washed Thru Perfs		To		ft									
Customer or Authorized Representative				Schlumberger Supervisor																	
ARROYO, ELKIN				Flanagan, Patrick										<input type="checkbox"/> CirculationLost				<input checked="" type="checkbox"/> Job Completed			

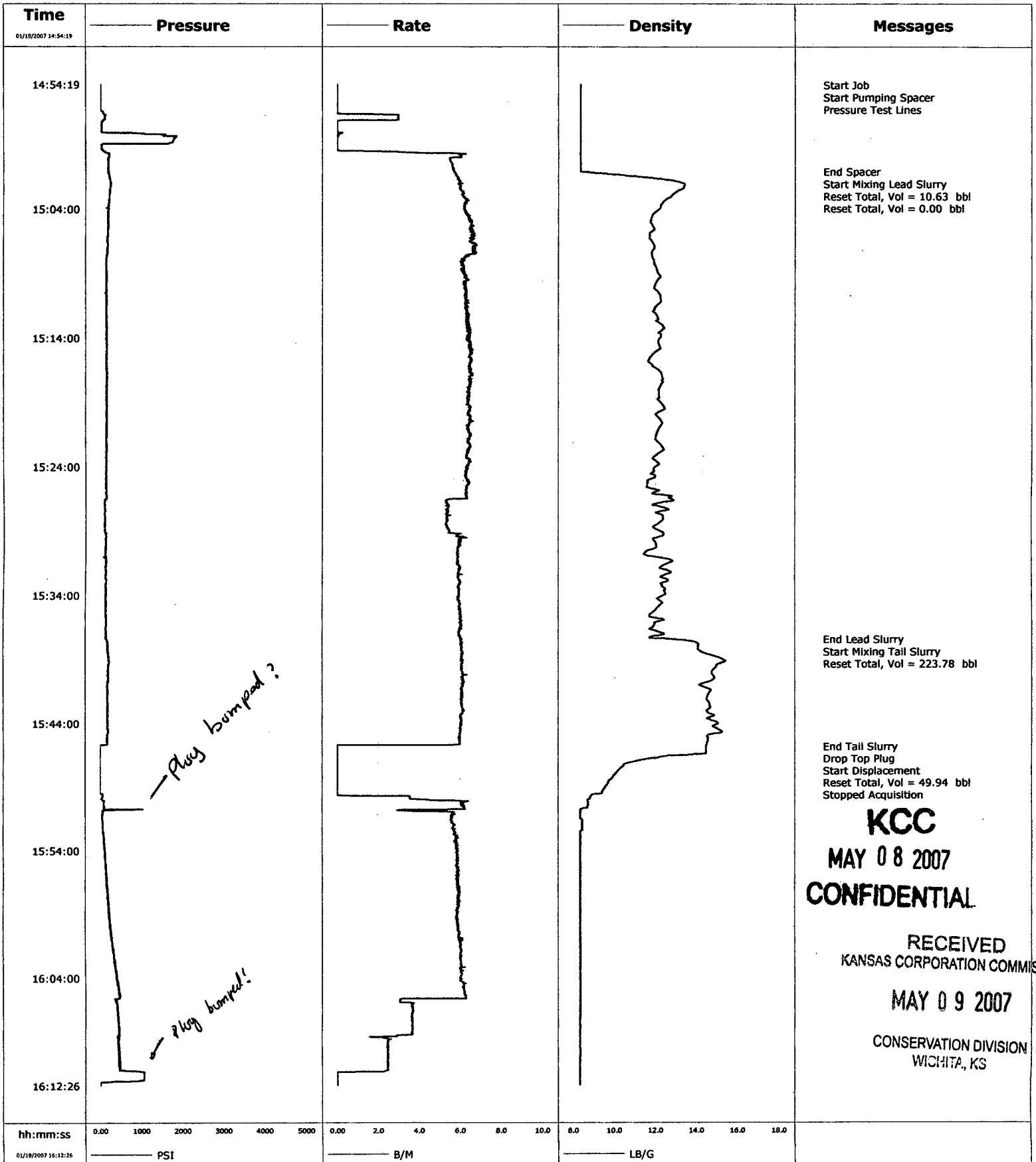
**KCC**  
**MAY 08 2007**  
**CONFIDENTIAL**

RECEIVED  
KANSAS CORPORATION COMMISSION

**MAY 09 2007**

CONSERVATION DIVISION  
WICHITA, KS

<b>Well</b>	Cook B # 1	<b>Client</b>	Oxy Resource California LLC
<b>Field</b>		<b>SIR No.</b>	
<b>Engineer</b>		<b>Job Type</b>	8 5/8" surface
<b>Country</b>	United States	<b>Job Date</b>	01-18-2007



**KCC**  
**MAY 08 2007**  
**CONFIDENTIAL**

RECEIVED  
 KANSAS CORPORATION COMMISSION

**MAY 09 2007**  
 CONSERVATION DIVISION  
 WICHITA, KS



<b>Well Information</b>			
<b>Company:</b>	Oxy	<b>Stage:</b>	Single
<b>Well Name:</b>	Cook	<b>Job Type:</b>	Surface
<b>Well Number:</b>	B #1	<b>Job Date:</b>	1/18/2007
<b>Spacer and Water</b>			
Spacer(bbls)	10	Spcr Hydro(PSI)	58.93
Fresh Water		Total Water(bbls)	411.85
<b>Cement Totals</b>			
Lead sks	585	Lead CF	1275.3
Yeild	2.18	Lead(bbls)	227.13
Water req.	7251.08	BBLS Water	172.64
Weight	12.2	Lead Height(ft)	1193.02
15:85 Poz C + 6%D20 +2%S1		Lead Hydro(PSI)	756.85
+ 0.5 pps D29		Excess(bbls)	139.44
Tail sks	195	Tail CF	261.3
Yeild	1.34	Tail BBLS	46.538
Water req	1238.84	BBLS Water	29.496
Weight	14.8	Tail Height(ft)	594.98
Class C + 2%S1 + 0.125PPS D130		Tail Hydro(PSI)	457.90
<b>Capacity Information</b>			
Casing ID	8.097	bbls/ft casing	0.0637
Casing OD	8.625	bbls/ft annular	0.0735
Casing Weight	24	Casing cap.(bbls)	113.87
Open Hole ID	12.25	Displacement(bbls)	111.07
Casing length	1788	Shoe Cap.(bbls)	2.80
Shoe length	44	Annular cap.(bbls)	131.43
Annular length	1788	Hole Cap.(bbls)	260.49
<b>Bump &amp; Lift</b>			
Displ Fluid Wt.	8.33	Disp Hydro(PSI)	755.43
Drilling Fluid Wt.	9.20	Lift(PSI)	459.32
		Casing Lift(PSI)	669.78

**KCC**  
MAY 08 2007  
**CONFIDENTIAL**

RECEIVED  
KANSAS CORPORATION COMMISSION

MAY 09 2007

CONSERVATION DIVISION  
WICHITA, KS



# Cementing Service Report

Customer <b>OXY RESOURCE CALIFORNIA LLC</b>						Job Number <b>2205553030</b>									
Well <b>COOK B #1</b>			Location (legal)			Schlumberger Location <b>Perryton, TX</b>			Job Start <b>2007-Jan-27</b>						
Field		Formation Name/Type			Deviation		Bit Size <b>7.88 in</b>	Well MD <b>5,800 ft</b>	Well TVD <b>5,800 ft</b>						
County <b>HASKELL</b>		State/Province <b>KANSAS</b>			BHP <b>psi</b>	BHST <b>138 °F</b>	BHCT <b>°F</b>	Pore Press. Gradient <b>psi/ft</b>							
Well Master: <b>0630887950</b>		API / UWI:			Casing/Liner										
Rig Name <b>MURFIN 20</b>		Drilled For <b>Oil &amp; Gas</b>		Service Via		Depth, ft <b>5799</b>	Size, in <b>5.5</b>	Weight, lb/ft <b>17</b>	Grade	Thread					
Offshore Zone		Well Class <b>New</b>		Well Type <b>Exploration</b>		Tubing/Drill Pipe									
Drilling Fluid Type			Max. Density <b>lb/gal</b>		Plastic Vi: cp	Depth,	Size, in	Weight, lb/ft	Grade	Thread					
Service Line <b>Cementing</b>		Job Type <b>Cem Prod Casing</b>			Perforations/Open Hole										
Max. Allowed Tubing Pressure <b>2000 psi</b>		Max. Allowed Ann. Pressure <b>psi</b>		WellHead Connection <b>5 1/2" H&amp;SM</b>		Top, ft	Bottom, ft	spf	No. of Shots	Total Interval <b>ft</b>					
Service Instructions STG 1: 20 bbls CW100 130 sk 50/50 Poz:H+Adds STG 2: 20 bbls CW100, 75 sks D903 +3%D79 +0.2% D46 +0.125pps D130 135 sks H+0.2%D65 +0.1% D167 +0.125pps D130 (25 sks of Lead for rat & mouse)						Treat Down <b>Casing</b>	Displacement <b>133.5 bbl</b>	Packer Type	Packer Depth <b>ft</b>						
						Tubing Vol. <b>bbl</b>	Casing Vol. <b>135 bbl</b>	Annular Vol. <b>179 bbl</b>	OpenHole Vol <b>313 bbl</b>						
						Casing/Tubing Secured <input checked="" type="checkbox"/> 1 Hole Volume Circulated prior to Cementing <input checked="" type="checkbox"/>					Casing Tools		Squeeze Job		
						Lift Pressure: <b>570 psi</b>		Pipe Rotated <input type="checkbox"/>		Pipe Reciprocated <input type="checkbox"/>		Shoe Type:		Squeeze Type	
No. Centralizers:		Top Plugs:		Bottom Plugs:		Shoe Depth: <b>5799 ft</b>		Tool Type:							
Cement Head Type: <b>Single</b>		Stage Tool Type:		Tool Depth: <b>ft</b>		Stage Tool Depth: <b>2943 ft</b>		Tail Pipe Size: <b>in</b>							
Job Scheduled For:		Arrived on Location: <b>2007-Jan-27 2:30</b>		Leave Location: <b>2007-Jan-27 11:30</b>		Collar Type:		Tail Pipe Depth: <b>ft</b>							
						Collar Depth: <b>2943 ft</b>		Sqz Total Vol: <b>bbl</b>							
Date	Time 24 hr clock	Treating Pressure psi	Flow Rate bbl/min	Volume bbl	CMT DENS lb/gal	Flowmeter Rate bbl/min	Flowmeter Tot bbl	0	0	Message					
2007-Jan-27	4:42	0	0.0	0.0	8.31	0.0	0.0	0	0						
2007-Jan-27	4:42									Start Job					
2007-Jan-27	4:42	41	0.0	0.0	8.31	0.2	0.0	0	0						
2007-Jan-27	4:43	114	0.0	0.0	8.31	0.3	0.4	0	0						
2007-Jan-27	4:43	2234	0.0	0.0	8.31	0.1	0.5	0	0						
2007-Jan-27	4:44	2779	0.0	0.0	8.31	0.0	0.5	0	0						
2007-Jan-27	4:44	2934	0.0	0.0	8.31	0.0	0.5	0	0						
2007-Jan-27	4:44	2925	0.0	0.0	8.31	0.0	0.5	0	0						
2007-Jan-27	4:44									Pressure Test Lines					
2007-Jan-27	4:45	146	0.0	0.0	8.32	0.0	0.5	0	0						
2007-Jan-27	4:45	105	0.0	0.0	8.32	0.0	0.5	0	0						
2007-Jan-27	4:46	101	0.0	0.0	8.32	0.0	0.5	0	0						
2007-Jan-27	4:46	101	0.0	0.0	8.33	0.0	0.5	0	0						
2007-Jan-27	4:47	96	0.0	0.0	8.33	0.0	0.5	0	0						
2007-Jan-27	4:47									Start Pumping Wash					
2007-Jan-27	4:47	110	0.0	0.0	8.33	0.0	0.5	0	0						
2007-Jan-27	4:48	494	3.6	0.7	8.31	3.6	1.1	0	0	RECEIVED KANSAS CORPORATION COMMISSION					
2007-Jan-27	4:48	526	3.6	2.5	8.31	3.3	2.9	0	0						
2007-Jan-27	4:49	591	4.9	4.7	8.31	4.9	5.0	0	0	MAY 09 2007					
2007-Jan-27	4:49	586	5.0	7.2	8.31	5.0	7.5	0	0						
2007-Jan-27	4:50	586	5.1	9.7	8.31	5.1	10.0	0	0	CONSERVATION DIVISION WICHITA, KS					
2007-Jan-27	4:50	581	5.1	12.2	8.31	5.1	12.5	0	0						

KCC  
MAY 08 2007  
CONFIDENTIAL

Well		Field			Service Date		Customer		Job Number	
COOK B ##1					0727-Jan-27		OXY RESOURCE CALIFORNIA LLC		2205553030	
Date	Time	Treating Pressure	Flow Rate	Volume	CMT DENS	Flowmeter Rate	Flowmeter Tot	0	Message	
	24 hr clock	psi	bbl/min	bbl	lb/gal	bbl/min	bbl	0		
2007-Jan-27	4:51	586	5.2	14.8	8.31	4.9	15.1	0		
2007-Jan-27	4:51	572	5.2	17.4	8.31	5.0	17.7	0		
2007-Jan-27	4:52	586	5.3	20.0	8.31	5.3	20.3	0		
2007-Jan-27	4:52	577	5.4	22.7	8.31	5.6	23.0	0		
2007-Jan-27	4:53	595	5.4	25.3	8.59	6.0	25.8	0		
2007-Jan-27	4:53								End Wash	
2007-Jan-27	4:53	600	5.4	25.4	8.62	6.1	25.9	0		
2007-Jan-27	4:53								Reset Total, Vol = 25.39 bbl	
2007-Jan-27	4:53	600	5.4	0.4	8.75	6.1	0.4	0		
2007-Jan-27	4:53								Start Cement Slurry	
2007-Jan-27	4:53	595	5.4	2.7	9.88	6.1	3.1	0		
2007-Jan-27	4:54	554	5.0	5.4	11.01	5.5	6.1	0		
2007-Jan-27	4:54	549	4.7	7.9	11.86	5.0	8.7	0		
2007-Jan-27	4:55	508	4.5	10.3	12.92	4.8	11.3	0		
2007-Jan-27	4:55	568	5.0	12.6	13.60	5.0	13.7	0		
2007-Jan-27	4:56	545	5.0	15.1	13.84	5.1	16.3	0		
2007-Jan-27	4:56	513	5.1	17.6	13.88	5.1	18.8	0		
2007-Jan-27	4:57	504	5.2	20.2	13.94	5.2	21.4	0		
2007-Jan-27	4:57	476	5.4	22.8	13.97	5.4	24.1	0		
2007-Jan-27	4:58	449	5.4	25.5	13.98	5.5	26.8	0		
2007-Jan-27	4:58	417	5.4	28.3	13.98	5.6	29.6	0		
2007-Jan-27	4:59	380	5.4	31.0	13.98	5.5	32.4	0		
2007-Jan-27	4:59	142	3.7	33.7	13.96	4.9	35.1	0		
2007-Jan-27	5:00	146	3.6	35.5	14.04	3.5	36.9	0		
2007-Jan-27	5:00	128	3.6	37.3	14.07	3.5	38.7	0		
2007-Jan-27	5:01	-9	0.0	38.7	14.00	0.2	40.2	0		
2007-Jan-27	5:01								End Cement Slurry	
2007-Jan-27	5:01	-9	0.0	38.7	13.99	0.0	40.2	0		
2007-Jan-27	5:01								Reset Total, Vol = 38.69 bbl	
2007-Jan-27	5:01	-9	0.0	0.0	13.98	0.0	0.0	0		
2007-Jan-27	5:01	-9	0.0	0.0	13.97	0.0	0.0	0		
2007-Jan-27	5:02	-9	0.0	0.0	13.98	0.0	0.0	0		
2007-Jan-27	5:02	-9	0.0	0.0	13.97	0.1	0.0	0		
2007-Jan-27	5:03	211	4.3	0.0	12.06	3.0	0.5	0		
2007-Jan-27	5:03	192	5.1	0.0	9.54	4.8	2.4	0		
2007-Jan-27	5:04	192	5.1	0.0	8.70	5.3	5.0	0		
2007-Jan-27	5:04	188	5.1	0.0	8.43	5.4	7.6	0		
2007-Jan-27	5:05	183	5.2	0.0	8.25	5.4	10.3	0		
2007-Jan-27	5:05	197	5.2	0.0	8.05	5.5	13.0	0		
2007-Jan-27	5:06	183	5.3	0.0	8.15	5.5	15.8	0		
2007-Jan-27	5:06	188	5.3	0.0	8.22	5.5	18.5	0		
2007-Jan-27	5:07	0	0.0	0.0	8.28	0.0	19.6	0		
2007-Jan-27	5:07	0	0.0	0.0	8.31	0.0	19.6	0		
2007-Jan-27	5:08	64	3.0	0.0	8.31	4.2	19.8	0		
2007-Jan-27	5:08	92	5.5	2.2	8.31	5.6	22.4	0		
2007-Jan-27	5:09	247	5.6	5.0	8.31	5.6	25.2	0		
2007-Jan-27	5:09								Drop Top Plug	
2007-Jan-27	5:09	220	5.6	5.3	8.31	5.5	25.4	0		
2007-Jan-27	5:09								Start Displacement	
2007-Jan-27	5:09	220	5.6	5.4	8.31	5.6	25.5	0		
2007-Jan-27	5:09	201	5.7	7.8	8.31	5.8	7.9	0		
2007-Jan-27	5:10	197	5.7	10.7	8.31	5.9	10.8	0		
2007-Jan-27	5:10	192	5.8	13.5	8.31	5.8	13.7	0		
2007-Jan-27	5:11	201	5.8	16.4	8.31	5.9	16.7	0		

**KCC**  
**MAY 08 2007**  
**CONFIDENTIAL**

**RECEIVED**  
**KANSAS CORPORATION COMMISSION**

**MAY 09 2007**

**CONSERVATION DIVISION**  
**WICHITA, KS**

Well		Field			Service Date		Customer		Job Number	
COOK B ##1					0727-Jan-27		OXY RESOURCE CALIFORNIA LLC		2205553030	
Date	Time	Treating Pressure	Flow Rate	Volume	CMT DENS	Flowmeter Rate	Flowmeter Tot	0	Message	
	24 hr clock	psi	bbf/min	bbf	lb/gal	bbf/min	bbf	0		
2007-Jan-27	5:11	197	5.8	19.3	8.31	6.0	19.6	0		
2007-Jan-27	5:12	192	5.7	22.2	8.31	5.8	22.6	0		
2007-Jan-27	5:12	192	5.8	25.1	8.31	5.9	25.5	0		
2007-Jan-27	5:13	188	5.8	28.0	8.31	5.9	28.5	0		
2007-Jan-27	5:13	183	5.8	30.9	8.31	5.9	31.4	0		
2007-Jan-27	5:14	179	5.8	33.7	8.31	5.9	34.3	0		
2007-Jan-27	5:14	188	5.8	36.6	8.31	5.9	37.3	0		
2007-Jan-27	5:15	192	5.8	39.5	8.31	5.9	40.2	0		
2007-Jan-27	5:15	192	5.8	42.4	8.31	5.9	43.1	0		
2007-Jan-27	5:16	192	5.8	45.3	8.31	5.8	46.1	0		
2007-Jan-27	5:16	188	5.8	48.2	8.31	5.9	49.0	0		
2007-Jan-27	5:17	188	5.8	51.0	8.31	5.9	51.9	0		
2007-Jan-27	5:17	188	5.8	53.9	8.31	5.9	54.9	0		
2007-Jan-27	5:18	188	5.8	56.8	8.31	5.9	57.8	0		
2007-Jan-27	5:18	188	5.8	59.7	8.31	5.9	60.8	0		
2007-Jan-27	5:19	64	3.6	61.7	8.31	3.9	63.1	0		
2007-Jan-27	5:19	69	3.6	63.6	8.31	3.9	65.0	0		
2007-Jan-27	5:20	69	3.6	65.4	8.60	4.0	67.0	0		
2007-Jan-27	5:20	183	5.6	67.9	8.70	5.8	69.6	0		
2007-Jan-27	5:21	169	5.6	70.7	8.74	5.8	72.6	0		
2007-Jan-27	5:21	169	5.7	73.6	8.76	5.8	75.5	0		
2007-Jan-27	5:22	105	5.7	76.4	8.83	5.9	78.4	0		
2007-Jan-27	5:22	96	5.7	79.2	8.86	5.8	81.4	0		
2007-Jan-27	5:23	101	5.6	82.0	8.86	5.8	84.3	0		
2007-Jan-27	5:23	96	5.6	84.8	8.86	5.8	87.2	0		
2007-Jan-27	5:24	92	5.6	87.6	8.86	5.8	90.1	0		
2007-Jan-27	5:24	92	5.6	90.4	8.87	5.8	93.0	0		
2007-Jan-27	5:25	96	5.6	93.2	8.88	5.8	95.9	0		
2007-Jan-27	5:25	101	5.6	96.1	8.89	5.8	98.8	0		
2007-Jan-27	5:26	96	5.6	98.9	8.89	5.9	101.7	0		
2007-Jan-27	5:26	165	5.6	101.7	8.89	5.8	104.7	0		
2007-Jan-27	5:27	229	5.6	104.5	8.90	5.8	107.6	0		
2007-Jan-27	5:27	279	5.7	107.4	8.89	5.9	110.5	0		
2007-Jan-27	5:28	330	5.8	110.2	8.89	5.9	113.5	0		
2007-Jan-27	5:28	389	5.8	113.1	8.89	5.9	116.4	0		
2007-Jan-27	5:29	435	5.8	116.0	8.90	6.0	119.4	0		
2007-Jan-27	5:29	485	5.8	118.9	8.90	6.0	122.4	0		
2007-Jan-27	5:30	526	5.9	121.8	8.90	6.1	125.4	0		
2007-Jan-27	5:30	389	3.7	124.7	8.90	5.0	128.4	0		
2007-Jan-27	5:31	430	2.5	126.2	8.90	2.6	130.0	0		
2007-Jan-27	5:31	467	2.5	127.5	8.90	2.6	131.3	0		
2007-Jan-27	5:32	494	2.5	128.7	8.90	2.5	132.6	0		
2007-Jan-27	5:32	499	2.5	129.9	8.90	2.5	133.8	0		
2007-Jan-27	5:33	549	2.5	131.2	8.90	2.5	135.1	0		
2007-Jan-27	5:33	572	2.5	132.4	8.90	2.5	136.4	0		
2007-Jan-27	5:34	1305	0.0	133.4	8.90	0.0	137.4	0		
2007-Jan-27	5:34	1300	0.0	133.4	8.90	0.0	137.4	0		
2007-Jan-27	5:35	1295	0.0	133.4	8.91	0.0	137.4	0		
2007-Jan-27	5:35								End Displacement	
2007-Jan-27	5:35								Bump Top Plug	
2007-Jan-27	5:35								Reset Total, Vol = 133.41 bbl	
2007-Jan-27	5:35	1295	0.0	0.0	8.91	0.0	0.0	0		
2007-Jan-27	5:36	69	0.0	0.0	8.91	0.0	0.0	0		
2007-Jan-27	5:36	-14	0.0	0.0	8.91	0.0	0.0	0		

**KCC**  
**MAY 08 2007**  
**CONFIDENTIAL**

**RECEIVED**  
**KANSAS CORPORATION COMMISSION**  
**MAY 09 2007**  
**CONSERVATION DIVISION**  
**WICHITA, KS**

Well		Field			Service Date		Customer		Job Number	
COOK B #1					0727-Jan-27		OXY RESOURCE CALIFORNIA LLC		2205553030	
Date	Time	Treating Pressure	Flow Rate	Volume	CMT DENS	Flowmeter Rate	Flowmeter Tot	0	Message	
	24 hr clock	psi	bbl/min	bbl	lb/gal	bbl/min	bbl	0		
2007-Jan-27	9:36	96	0.0	0.0	11.40	5.4	0.3	0		
2007-Jan-27	9:36							0		
2007-Jan-27	9:36	96	0.0	0.0	11.39	4.8	0.9	0	Rodent holes	
2007-Jan-27	9:36	-9	0.0	0.0	11.39	2.9	3.1	0		
2007-Jan-27	9:37	-9	0.0	0.0	11.40	2.8	4.5	0		
2007-Jan-27	9:37	0	0.0	0.0	11.34	2.8	5.9	0		
2007-Jan-27	9:38	-5	0.0	0.0	11.24	2.8	7.3	0		
2007-Jan-27	9:38	-5	0.0	0.0	11.21	2.8	8.7	0		
2007-Jan-27	9:39	-5	0.0	0.0	11.21	2.7	10.0	0		
2007-Jan-27	9:39	-5	0.0	0.0	11.20	2.8	11.4	0		
2007-Jan-27	9:40	-5	0.0	0.0	11.18	2.8	12.8	0		
2007-Jan-27	9:40	-5	0.0	0.0	11.17	2.8	14.2	0		
2007-Jan-27	9:41	78	0.0	0.0	11.16	3.8	15.7	0		
2007-Jan-27	9:41	73	0.0	0.0	11.13	4.7	18.0	0		
2007-Jan-27	9:42	-14	0.0	0.0	11.15	0.0	19.1	0		
2007-Jan-27	9:42	-5	0.0	0.0	10.17	2.4	19.7	0		
2007-Jan-27	9:43	-5	0.0	0.0	9.17	2.6	20.9	0		
2007-Jan-27	9:43	-5	0.0	0.0	8.88	2.7	22.3	0		
2007-Jan-27	9:44	-5	0.0	0.0	8.80	0.0	23.4	0		
2007-Jan-27	9:44	-5	0.0	0.0	8.79	0.0	0.0	0		
2007-Jan-27	9:45	-5	0.0	0.0	8.80	0.0	0.0	0		
2007-Jan-27	9:47	-5	0.0	0.0	8.79	0.0	0.0	0		
2007-Jan-27	9:48	1154	0.0	0.0	8.72	0.0	0.1	0		
2007-Jan-27	9:48	3355	0.0	0.1	8.69	0.0	0.1	0		
2007-Jan-27	9:49									
2007-Jan-27	9:49	3287	0.0	0.1	8.67	0.0	0.1	0	Pressure Test Lines	
2007-Jan-27	9:49	3278	0.0	0.1	8.67	0.0	0.1	0		
2007-Jan-27	9:49	50	0.0	0.1	8.67	0.0	0.1	0		
2007-Jan-27	9:50	220	4.4	0.8	8.57	4.2	0.6	0		
2007-Jan-27	9:50								Start Pumping Wash	
2007-Jan-27	9:50	320	4.5	1.2	8.52	4.3	1.1	0		
2007-Jan-27	9:50	266	4.5	3.5	8.40	4.5	3.3	0		
2007-Jan-27	9:51	252	4.6	5.8	8.36	4.7	5.6	0		
2007-Jan-27	9:51	247	4.7	8.1	8.35	4.7	8.0	0		
2007-Jan-27	9:52	252	4.7	10.4	8.34	4.7	10.3	0		
2007-Jan-27	9:52	256	4.8	12.8	8.33	4.8	12.7	0		
2007-Jan-27	9:53	256	4.8	15.2	8.32	5.0	15.2	0		
2007-Jan-27	9:53	266	4.9	17.6	8.32	4.9	17.6	0		
2007-Jan-27	9:54	270	4.9	20.0	8.32	5.0	20.1	0		
2007-Jan-27	9:54	266	4.9	22.4	8.71	5.8	22.7	0		
2007-Jan-27	9:54									
2007-Jan-27	9:54	256	4.9	22.5	8.73	5.8	22.8	0	End Wash	
2007-Jan-27	9:54	261	4.9	22.7	8.77	5.7	22.9	0		
2007-Jan-27	9:54									
2007-Jan-27	9:54								Reset Total, Vol = 22.66 bbl	
2007-Jan-27	9:54								Start Mixing Lead Slurry	
2007-Jan-27	9:54	270	4.9	0.3	8.83	5.6	0.4	0		
2007-Jan-27	9:55	275	4.9	2.3	8.86	5.2	2.5	0		
2007-Jan-27	9:55	284	4.9	4.8	9.54	5.5	5.2	0		
2007-Jan-27	9:56	279	5.0	7.2	10.12	5.4	8.0	0		
2007-Jan-27	9:56	270	5.0	9.7	10.32	5.2	10.6	0		
2007-Jan-27	9:57	256	5.0	12.2	10.59	5.4	13.3	0		
2007-Jan-27	9:57	261	5.0	14.7	10.75	5.3	16.0	0		
2007-Jan-27	9:58	252	5.1	17.2	10.73	5.4	18.7	0		
2007-Jan-27	9:58	247	5.1	19.8	10.80	5.4	21.4	0		

**KCC**  
**MAY 08 2007**  
**CONFIDENTIAL**

**RECEIVED**  
**KANSAS CORPORATION COMMISSION**

**MAY 09 2007**

**CONSERVATION DIVISION**  
**WICHITA, KS**

Well		Field			Service Date		Customer		Job Number	
COOK B ##1					0727-Jan-27		OXY RESOURCE CALIFORNIA LLC		2205553030	
Date	Time	Treating Pressure	Flow Rate	Volume	CMT DENS	Flowmeter Rate	Flowmeter Tot	0	Message	
	24 hr clock	psi	bbl/min	bbl	lb/gal	bbl/min	bbl	0		
2007-Jan-27	9:59	233	5.1	22.3	10.86	5.4	24.1	0		
2007-Jan-27	9:59	220	5.1	24.9	11.02	5.5	26.8	0		
2007-Jan-27	10:00	215	5.1	27.5	11.16	5.4	29.5	0		
2007-Jan-27	10:00	197	5.1	30.0	11.06	5.3	32.2	0		
2007-Jan-27	10:01	174	5.2	32.6	10.97	5.5	34.9	0		
2007-Jan-27	10:01	174	5.2	35.2	11.01	5.5	37.6	0		
2007-Jan-27	10:02	160	5.2	37.8	11.10	5.6	40.4	0		
2007-Jan-27	10:02	146	5.2	40.4	11.21	5.5	43.1	0		
2007-Jan-27	10:03	128	5.1	43.0	11.22	5.4	45.9	0		
2007-Jan-27	10:03	124	5.1	45.6	11.17	5.5	48.6	0		
2007-Jan-27	10:04	114	5.1	48.2	11.26	5.5	51.3	0		
2007-Jan-27	10:04	110	5.2	50.8	11.34	5.5	54.1	0		
2007-Jan-27	10:05	64	3.6	52.9	11.77	4.1	56.5	0		
2007-Jan-27	10:05	78	3.6	54.7	12.66	4.2	58.5	0		
2007-Jan-27	10:05								End Lead Slurry	
2007-Jan-27	10:05	78	3.7	55.3	12.98	4.1	59.1	0		
2007-Jan-27	10:05	78	3.7	55.4	13.06	4.1	59.3	0		
2007-Jan-27	10:05								Reset Total, Vol = 55.40 bbl	
2007-Jan-27	10:05								Start Mixing Tail Slurry	
2007-Jan-27	10:05	82	3.6	0.1	13.09	4.1	0.1	0		
2007-Jan-27	10:06	92	3.7	1.2	13.73	4.1	1.3	0		
2007-Jan-27	10:06	82	3.0	2.8	15.13	3.5	3.2	0		
2007-Jan-27	10:07	151	3.6	4.4	16.23	3.7	4.9	0		
2007-Jan-27	10:07	114	3.6	6.2	16.11	3.7	6.8	0		
2007-Jan-27	10:08	146	3.6	8.0	16.42	3.8	8.6	0		
2007-Jan-27	10:08	137	3.9	9.9	16.42	3.9	10.6	0		
2007-Jan-27	10:09	169	3.9	11.8	16.52	4.1	12.6	0		
2007-Jan-27	10:09	229	3.8	13.7	16.97	3.9	14.6	0		
2007-Jan-27	10:10	137	3.8	15.7	16.57	3.9	16.5	0		
2007-Jan-27	10:10	197	3.9	17.6	16.82	4.0	18.5	0		
2007-Jan-27	10:11	192	3.9	19.5	16.97	3.9	20.5	0		
2007-Jan-27	10:11	174	3.9	21.5	16.87	4.0	22.5	0		
2007-Jan-27	10:12	50	3.3	23.4	16.84	3.6	24.5	0		
2007-Jan-27	10:12								End Tail Slurry	
2007-Jan-27	10:12	-14	0.0	23.4	16.78	0.0	24.6	0		
2007-Jan-27	10:12	-14	0.0	23.4	16.76	0.0	24.6	0		
2007-Jan-27	10:12								Reset Total, Vol = 23.43 bbl	
2007-Jan-27	10:12	-14	0.0	0.0	16.74	0.0	0.0	0		
2007-Jan-27	10:13	-14	0.0	0.0	16.73	0.0	0.0	0		
2007-Jan-27	10:14	-14	0.0	0.0	16.74	0.0	0.0	0		
2007-Jan-27	10:14	-14	0.0	0.0	16.75	0.0	0.0	0		
2007-Jan-27	10:15	-14	0.0	0.0	16.76	0.0	0.0	0		
2007-Jan-27	10:16	-9	0.0	0.0	16.74	0.0	0.0	0		
2007-Jan-27	10:17	151	3.5	0.3	11.80	0.0	0.0	0		
2007-Jan-27	10:17	114	5.5	2.8	10.31	4.8	0.9	0		
2007-Jan-27	10:18	105	5.6	5.6	9.13	5.6	3.5	0		
2007-Jan-27	10:18	101	5.6	7.3	8.73	5.6	5.2	0		
2007-Jan-27	10:18								Drop Top Plug	
2007-Jan-27	10:18	96	5.6	7.4	8.71	5.6	5.3	0		
2007-Jan-27	10:18								Start Displacement	
2007-Jan-27	10:18	96	5.7	8.4	8.57	5.6	6.3	0		
2007-Jan-27	10:19	96	5.7	11.2	8.41	6.0	9.2	0		
2007-Jan-27	10:19	96	5.8	14.1	8.37	6.0	12.2	0		
2007-Jan-27	10:20	92	5.8	17.0	8.35	6.0	15.2	0		

**KCC**  
**MAY 08 2007**  
**CONFIDENTIAL**

**RECEIVED**  
**KANSAS CORPORATION COMMISSION**  
**MAY 09 2007**  
**CONSERVATION DIVISION**  
**WICHITA, KS**

Well		Field			Service Date		Customer		Job Number
COOK B #1					0727-Jan-27		OXY RESOURCE CALIFORNIA LLC		2205553030
Date	Time	Treating Pressure	Flow Rate	Volume	CMT DENS	Flowmeter Rate	Flowmeter Tot	0	Message
	24 hr clock	psi	bbl/min	bbl	lb/gal	bbl/min	bbl	0	
2007-Jan-27	10:20	87	5.9	19.9	8.33	6.0	18.2	0	
2007-Jan-27	10:21	92	5.9	22.9	8.33	6.2	21.2	0	
2007-Jan-27	10:21	92	6.0	25.8	8.31	6.3	24.3	0	
2007-Jan-27	10:22	87	5.8	28.8	8.32	6.0	27.4	0	
2007-Jan-27	10:22	92	5.8	31.7	8.32	6.1	30.4	0	
2007-Jan-27	10:23	92	5.9	34.6	8.32	6.1	33.5	0	
2007-Jan-27	10:23	92	5.8	37.5	8.32	6.1	36.6	0	
2007-Jan-27	10:24	92	5.9	40.5	8.31	6.2	39.7	0	
2007-Jan-27	10:24	78	5.8	43.4	8.32	6.2	42.7	0	
2007-Jan-27	10:25	73	5.4	46.1	8.31	5.7	45.6	0	
2007-Jan-27	10:25	73	5.5	48.8	8.31	5.8	48.5	0	
2007-Jan-27	10:26	137	5.4	51.5	8.31	5.5	51.3	0	
2007-Jan-27	10:26	215	5.4	54.2	8.31	5.5	54.1	0	
2007-Jan-27	10:27	298	5.5	56.9	8.31	5.6	56.8	0	
2007-Jan-27	10:27	375	5.6	59.7	8.31	5.7	59.6	0	
2007-Jan-27	10:28	339	2.8	61.5	8.31	2.9	61.6	0	
2007-Jan-27	10:28	352	2.8	62.9	8.31	2.8	63.0	0	
2007-Jan-27	10:29	389	2.8	64.3	8.31	2.8	64.4	0	
2007-Jan-27	10:29	449	2.8	65.7	8.31	2.8	65.9	0	
2007-Jan-27	10:30	481	2.8	67.1	8.31	2.8	67.3	0	
2007-Jan-27	10:30	554	2.7	68.5	8.31	2.8	68.6	0	
2007-Jan-27	10:31	1497	2.6	69.8	8.31	2.7	70.0	0	
2007-Jan-27	10:31	2348	0.0	70.1	8.31	0.0	70.4	0	
2007-Jan-27	10:31	2344	0.0	70.1	8.31	0.0	70.4	0	
2007-Jan-27	10:31								End Displacement
2007-Jan-27	10:31								Bump Top Plug
2007-Jan-27	10:31	2348	0.0	70.1	8.31	0.0	70.4	0	
2007-Jan-27	10:31								Reset Total, Vol = 70.12 bbl
2007-Jan-27	10:32	2339	0.0	0.0	8.31	0.0	0.0	0	
2007-Jan-27	10:32	801	0.0	0.0	8.31	0.0	0.0	0	
2007-Jan-27	10:33	-14	0.0	0.0	8.31	0.0	0.0	0	
2007-Jan-27	10:34	-14	0.0	0.0	8.32	0.0	0.0	0	
2007-Jan-27	10:35	-9	0.0	0.0	8.32	0.0	0.0	0	
2007-Jan-27	10:36	-3749	0.0	0.0	-6.25	0.0	0.0	0	
2007-Jan-27	10:36								End Job
2007-Jan-27	10:36	-3749	0.0	0.0	-6.25	0.0	0.0	0	

**Post Job Summary**

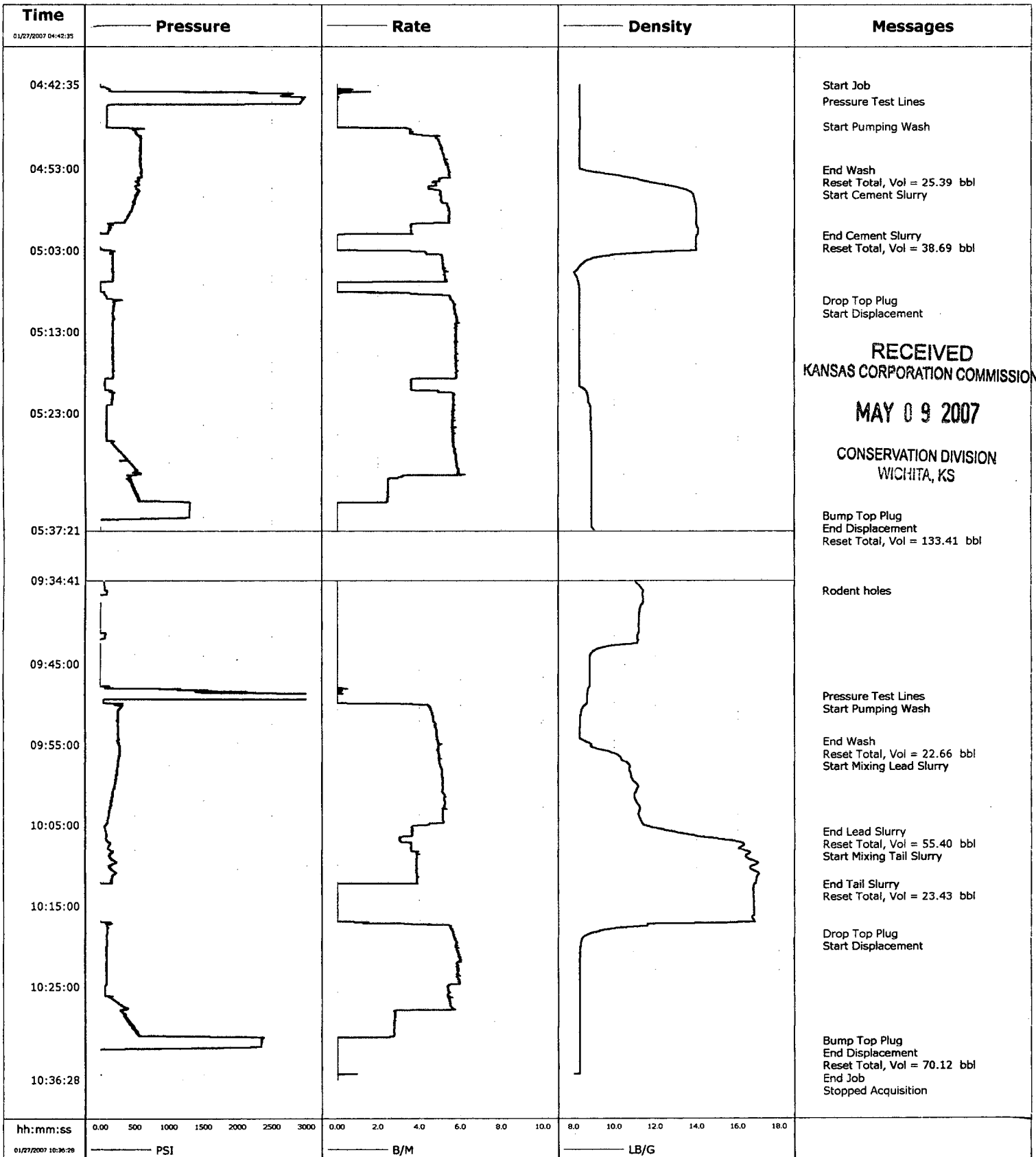
Average Pump Rates, bpm				Volume of Fluid Injected, bbl			
Slurry	N2	Mud	Maximum Rate	Total Slurry	Mud	Spacer	N2
5			6	105		40	
Treating Pressure Summary, psi				Breakdown Fluid			
Maximum	Final	Average	Bump Plug to Breakdown	Volume	Density		
			2300		bbl	lb/gal	
Avg. N2 Percent	Designed Slurry Volume	Displacement	Mix Water Temp	<input type="checkbox"/> Cement Circulated to Surface? Volume		bbl	
%	105 bbl	133.5 bbl	°F	<input type="checkbox"/> Washed Thru Perfs To		ft	
Customer or Authorized Representative			Schlumberger Supervisor			<input type="checkbox"/> CirculationLost	
ARROYO, ELKIN			Ahrends, Timothy			<input checked="" type="checkbox"/> Job Completed	

**RECEIVED**  
KANSAS CORPORATION COMMISSION

MAY 09 2007

CONSERVATION DIVISION  
WICHITA, KS

<b>Well</b>	Cook B #1	<b>Client</b>	OXY
<b>Field</b>		<b>SIR No.</b>	2205553030
<b>Engineer</b>		<b>Job Type</b>	2-stage production
<b>Country</b>	United States	<b>Job Date</b>	01-27-2007





5/8/08



OXY USA Inc.  
1701 N. Kansas  
P.O. Box 2528  
Liberal, Kansas 67905

May 8, 2007

Kansas State Corporation Commission  
Conservation Division, Finney State Office Building  
130 S. Market, Room 2078  
Wichita, KS 67202-3802

RE: COOK B-1  
NE/4 S-22 R-30S T-32W  
Haskell County, Kansas  
API NO: 15-081-21698

**KCC**  
**MAY 08 2007**  
**CONFIDENTIAL**

Dear Sir:

**Please file confidential.** The following items are being submitted for the above referenced well which was recently drilled and has been temporarily abandoned.

1. KANSAS STATE FORM ACO-1 + 2 copies
2. CEMENT REPORTS
3. GEOLOGICAL REPORT
4. A SET OF ELECTRIC LOGS
5. TEMPORARY ABANDONMENT WELL APPLICATION-FORM CP111

If there are any questions or you require further information, please contact me at the above address or by phone at (620) 629-4229.

Sincerely,

Rafael Bacigalupo  
Capital Projects

Enclosures

Cc: OXY - Houston  
OXY - Well File

**RECEIVED**  
**KANSAS CORPORATION COMMISSION**  
**MAY 09 2007**  
**CONSERVATION DIVISION**  
**WICHITA, KS**