

STATE OF KANSAS  
STATE CORPORATION COMMISSION

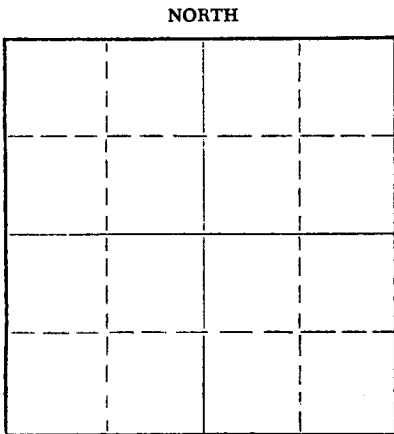
Give All Information Completely  
Make Required Affidavit  
Mail or Deliver Report to:  
Conservation Division  
State Corporation Commission  
212 North Market, Insurance Bldg.  
Wichita, Kansas

*mail to*

*15-195-00384-00-00*  
**WELL PLUGGING RECORD**

Trego County, Sec. 20 Twp. 11 Rge. 22 (E) W (W)

Location as "NE/CNW/SW" or footage from lines SE SE NW  
Lease Owner John O. Farmer, Inc.  
Lease Name Lemke Well No. 1  
Office Address Russell, Kansas  
Character of Well (completed as Oil, Gas or Dry Hole) \_\_\_\_\_  
Date well completed \_\_\_\_\_ 19\_\_\_\_  
Application for plugging filed \_\_\_\_\_ 19\_\_\_\_  
Application for plugging approved \_\_\_\_\_ 19\_\_\_\_  
Plugging commenced 5-24-60 \_\_\_\_\_ 19\_\_\_\_  
Plugging completed 6-6-60 \_\_\_\_\_ 19\_\_\_\_  
Reason for abandonment of well or producing formation Depleted.



Locate well correctly on above Section Plat

If a producing well is abandoned, date of last production \_\_\_\_\_ 19\_\_\_\_  
Was permission obtained from the Conservation Division or its agents before plugging was commenced? yes

Name of Conservation Agent who supervised plugging of this well Gilbert P. Leiker  
Producing formation \_\_\_\_\_ Depth to top \_\_\_\_\_ Bottom \_\_\_\_\_ Total Depth of Well 4016 Feet  
Show depth and thickness of all water, oil and gas formations.

OIL, GAS OR WATER RECORDS

CASING RECORD

FORMATION	CONTENT	FROM	TO	SIZE	PUT IN	PULLED OUT
				8-5/8"	160'	None
				5-1/2"	4016'	1601'

Describe in detail the manner in which the well was plugged, indicating where the mud fluid was placed and the method or methods used in introducing it into the hole. If cement or other plugs were used, state the character of same and depth placed, from \_\_\_\_\_ feet to \_\_\_\_\_ feet for each plug set.

Checked hole to 3992', found it open, sanded to 3870' and dumped 4 sacks of cement with bailer. Plugged off @ 3300', pumped 4 sacks of hulls and 8 sacks of mud. Pulled casing to approx. 640', circulated casing with 16 sacks of gel-mud and pumped in 20 ~~sacks~~ sacks of cement. Pulled casing to 250' and pumped 20 sacks of cement. Pulled rest of casing, mudded hole to 40' and set rock bridge to 30'. Dumped 10 sacks of cement to base of cellar.

PLUGGING COMPLETED.

**RECEIVED**  
STATE CORPORATION COMMISSION  
*6-15-1960*  
JUN 15 1960

CONSERVATION DIVISION  
Wichita, Kansas

(If additional description is necessary, use BACK of this sheet)  
Name of Plugging Contractor Knight Casing Pulling Company  
Address Chase, Kansas

STATE OF Kansas COUNTY OF Rice, ss.  
Noel J. Knight (employee of owner) or (owner or operator) of the above-described well, being first duly sworn on oath, says: That I have knowledge of the facts, statements, and matters herein contained and the log of the above-described well as filed and that the same are true and correct. So help me God.

(Signature) Noel J. Knight  
Chase, Kansas  
(Address)

SUBSCRIBED AND SWORN TO before me this 13th day of June, 1960

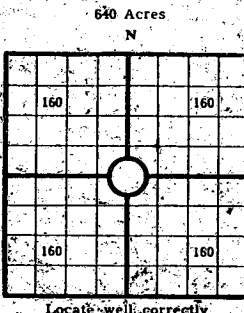
My commission expires 5-20-64  
Milton J. Volin Notary Public.



ADDRESS Russell, Kansas

Give detailed description and thickness of gill formation drilled through, contents of sand, whether of water, oil or gas.

WELL NO. LEMKE COUNTY REGO TWP. 11S RGE. 22W SEC. 20



COUNTY REGO, SEC. 20, TWP. 11S RGE. 22W  
 COMPANY OPERATING JOHN O. FARMER, INC.  
 OFFICE ADDRESS Russell, Kansas  
 DRILLING STARTED 12/20 1959 DRILLING FINISHED 1/4 1960  
 DATE OF FIRST PRODUCTION \_\_\_\_\_ COMPLETED \_\_\_\_\_  
 WELL LOCATED SE 1/4 SE 1/4 NW 1/4, North of South  
 Line and \_\_\_\_\_ ft. East of West line of Quarter Section  
 Elevation (Relative to sea level) DERRICK FLOOR 2277 GROUND 2274  
 CHARACTER OF WELL (Oil, gas or dryhole) Oil

Formation	Top	Bottom	Formation	Top	Bottom
FARM NAME			LEMKE #1		
Shale & sand	0	160			
Shale	160	600			
Blue Clay	600	950	ELEVATION:	KB	2279
Shale & shells	950	1745	sample		log
Anhydrite	1745	1787	Anhydrite	1745	
Shale & shells	1787	2350	Heebner	3517	3517
Lime & shale	2350	2570	Toronto	3540	3540
Lime	2570	2650	Lansing	3553	3554
Lime & shale	2650	3540	B/KC	3795	3782
Lime	3540	3800	Marmatonchert	3873	3874
Lime & shale	3800	3850	Conglomerate chert		3947
Lime	3850	3885	Arbuckle		3976
Lime & chert	3885	3925	T.D.	4025	4025
Lime, chert, shale & sand	3925	3965	5-1/2" pipe set at		
Lime	3965	4025	4016 with 100 sacks cement		
R.T.D.		4025			

OIL OR GAS SANDS OR ZONES

Name	From	To	Name	From	To
1			4		
2			5		
3			6		

Perforating Record If Any Shot Record

Formation	From	To	No. of Shots	Formation	From	To	Size of Shot

CASING RECORD

Amount Set							Amount Pulled		Packet Record		
Size	Wt.	Thds.	Make	Ft.	In.	Ft.	In.	Size	Length	Depth Set	Make
8-5/8				160							

Liner Record: Amount \_\_\_\_\_ Kind \_\_\_\_\_ Top \_\_\_\_\_ Bottom \_\_\_\_\_

CEMENTING AND MUDDING

Size	Amount Set		Sacks Cement	Chemical		Method of Cementing	Amount	Mudding Method	Results (See Note)
	Ft.	In.		Gal.	Make				
8-5/8	160		140						
7-1/2	4016		100						

Note: What method was used to protect sands if outer strings were pulled?

NOTE: Were bottom hole plugs used? \_\_\_\_\_ If so, state kind, depth set and results obtained \_\_\_\_\_

TOOLS USED

Rotary Tools were used from \_\_\_\_\_ feet to \_\_\_\_\_ Cable tools were used from \_\_\_\_\_ feet to \_\_\_\_\_ feet, and from \_\_\_\_\_ feet to \_\_\_\_\_ feet, and from \_\_\_\_\_ feet to \_\_\_\_\_ feet to \_\_\_\_\_

Type Rig \_\_\_\_\_

INITIAL PRODUCTION TEST

Describe initial test whether by flow through tubing or casing or by pumping \_\_\_\_\_

Amount of Oil Production \_\_\_\_\_ bbls. Size of choke, if any \_\_\_\_\_ Length of test \_\_\_\_\_ Water Production \_\_\_\_\_ bbls. Gravity of oil \_\_\_\_\_ Type of Pump if pump is used, describe \_\_\_\_\_

I, the undersigned, being first duly sworn upon oath, state that this well record is true, correct and complete according to the records of this office and to the best of my knowledge and belief.

*John O. Farmer*  
 Name and title of representative of company

Subscribed and sworn to before me this 5th day of January, 1960.

My Commission expires 10/11/62

*Lucille Ramsey*  
 Notary Public

