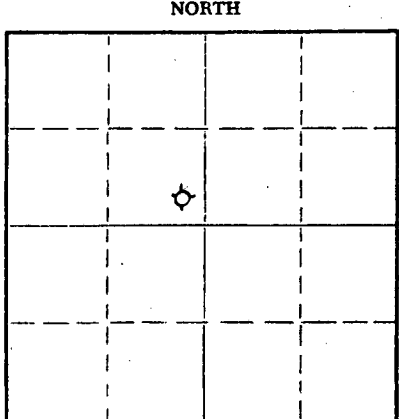


Give All Information Completely  
Make Required Affidavit  
Mail or Deliver Report to:  
Conservation Division  
State Corporation Commission  
212 North Market, Insurance Bldg.  
Wichita, Kansas

WELL PLUGGING RECORD



Trego County, Sec. 35 Twp. 11S Rge. 24W (E) (W)  
Location as "NE/CNW/SW" or footage from lines SE SE NW  
Lease Owner John O. Farmer, Inc.  
Lease Name Messeman Well No. #1  
Office Address Box 352 Russell, Kansas 67665  
Character of Well (completed as Oil, Gas or Dry Hole) Dry Hole  
Date well completed January 4, 1979 19  
Application for plugging filed Yes 19  
Application for plugging approved 19  
Plugging commenced 19  
Plugging completed 1:00 P.M. 1-4-79 19  
Reason for abandonment of well or producing formation

Locate well correctly on above Section Plat

If a producing well is abandoned, date of last production 19  
Was permission obtained from the Conservation Division or its agents before plugging was commenced? Yes

Name of Conservation Agent who supervised plugging of this well Gilbert Balthazor  
Producing formation Depth to top Bottom Total Depth of Well Feet  
Show depth and thickness of all water, oil and gas formations.

OIL, GAS OR WATER RECORDS

CASING RECORD

FORMATION	CONTENT	FROM	TO	SIZE	PUT IN	PULLED OUT

Describe in detail the manner in which the well was plugged, indicating where the mud fluid was placed and the method or methods used in introducing it into the hole. If cement or other plugs were used, state the character of same and depth placed, from feet to feet for each plug set.

Plug #1 900' w/70 sx. Cement  
Plug #2 200' w/20 sx. Cement  
Plug #3 40' w/10 sx. Cement

RECEIVED  
STATE CORPORATION COMMISSION  
1-10-1979  
JAN 10 1979  
CONSERVATION DIVISION  
Wichita, Kansas

(If additional description is necessary, use BACK of this sheet)  
Name of Plugging Contractor John O. Farmer, Inc.  
Address Box 352 Russell, Kansas 67665

STATE OF Kansas COUNTY OF Russell, ss.  
John O. Farmer (employee of owner) or (owner or operator) of the above-described

well, being first duly sworn on oath, says: That I have knowledge of the facts, statements, and matters herein contained and the log of the above-described well as filed and that the same are true and correct. So help me God.

(Signature) John O. Farmer

Box 352 Russell, Kansas 67665 (Address)

SUBSCRIBED before me this 9th day of January, 1979

My commission expires February 15, 1983

Helen Carlson Notary Public.



15-195-20529-00-00

**IMPORTANT**  
 Kans. Geo. Survey request  
 samples on this well.

**KANSAS DRILLERS LOG**

S. 35 T. 11 R. 24 <sup>EW</sup>

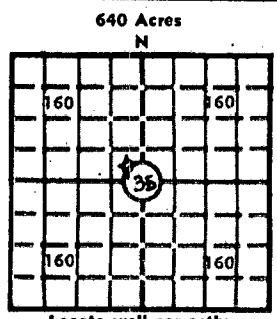
API No. 15 — 195 — 20,529-00-00  
 County Number

Loc. SE SE NW

Operator  
John O. Farmer, Inc.

County Trego

Address  
Box 352 Russell, Kansas 67665



Well No. #1 Lease Name  
Messeman

Footage Location  
330 feet from (N) (S) line 330 feet from (E) (W) line

Principal Contractor John O. Farmer, Inc. Geologist Sam L. Farmer

Spud Date 12-20-78 Total Depth 4115' P.B.T.D.

Date Completed 1-4-79 Oil Purchaser

Locate well correctly  
 Elev.: Gr. 2493'  
 DF 2496' KB 2498'

**CASING RECORD**

Report of all strings set — surface, intermediate, production, etc.

Purpose of string	Size hole drilled	Size casing set (in O.D.)	Weight lbs/ft.	Setting depth	Type cement	Sacks	Type and percent additives
Surface	12 1/4	8-5/8	26	209'	Common	175	

**LINER RECORD**

**PERFORATION RECORD**

Top, ft.	Bottom, ft.	Sacks cement	Shots per ft.	Size & type	Depth interval

**TUBING RECORD**

Size	Setting depth	Packer set at

RECEIVED  
 STATE CORPORATION COMMISSION  
 1-10-1979  
 JAN 10 1979

**ACID, FRACTURE, SHOT, CEMENT SQUEEZE RECORD**

Amount and kind of material used	Depth interval treated
	CONSERVATION DIVISION Wichita, Kansas

**INITIAL PRODUCTION**

Date of first production		Producing method (flowing, pumping, gas lift, etc.)			
RATE OF PRODUCTION PER 24 HOURS	Oil	Gas	Water	Gas-oil ratio	
	bbls.	MCF	bbls.	CFPB	
Disposition of gas (vented, used on lease or sold)			Producing interval (s)		

**INSTRUCTIONS:** As provided in KCC Rule 82-2-125, within 90 days after completion of a well, one completed copy of this Drillers Log shall be transmitted to the State Geological Survey of Kansas, 4150 Monroe Street, Wichita, Kansas 67209. Copies of this form are available from the Conservation Division, State Corporation Commission, 3830 So. Meridian (P.O. Box 17027), Wichita, Kansas 66217. Phone AC 316-522-2206. If confidential custody is desired, please note Rule 82-2-125. Drillers Logs will be on open file in the Oil and Gas Division, State Geological Survey of Kansas, Lawrence, Kansas 66044.

DESIGNATE TYPE OF COMP.: OIL, GAS, DRY HOLE, SWDW, ETC.:

Operator  
John O. Farmer, Inc.

Well No. #1      Lease Name Musseman

S 35 T 11S R 24W E W

Dry Hole

**WELL LOG**

Show all important zones of porosity and contents thereof; cored intervals, and all drill-stem tests, including depth interval tested, cushion used, time tool open, flowing and shut-in pressures, and recoveries.

SHOW GEOLOGICAL MARKERS, LOGS RUN, OR OTHER DESCRIPTIVE INFORMATION.

FORMATION DESCRIPTION, CONTENTS, ETC.	TOP	BOTTOM	NAME	DEPTH
Clay & Sand	-0-	134		
Blue Shale	134	209		
Shale	209	570		
Shale & Sand	570	1600		
Sand	1600	1785		
Red Bed	1785	2084		
Anhydrite	2084	2127		
Shale & Shells	2127	2320		
Shale & Lime	2320	3610		
Lime & Shale	3610	3870		
Lime	3870	4115		

USE ADDITIONAL SHEETS, IF NECESSARY, TO COMPLETE WELL RECORD.

Date Received

*John O. Farmer*  
Signature

President  
Title

January 9, 1979  
Date