

10-2-90
15-195-22062-00-00

10

CO-7

PLAT AND CERTIFICATION OF ACREAGE ATTRIBUTABLE TO AN OIL WELL

State Corporation Commission, Conservation Division
200 Colorado Derby Bldg. Wichita, Kansas 67202

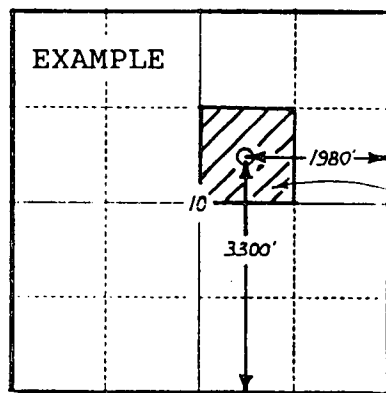
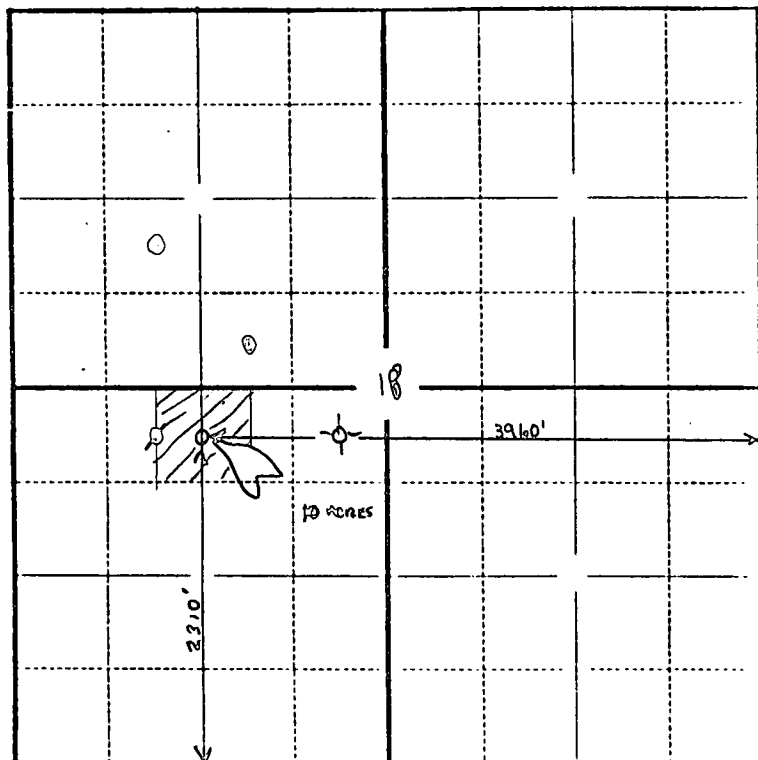
OPERATOR Lincoln Oil Co. & Lansing Energy Corp.
LEASE NAME Lynd
WELL NUMBER 1
FIELD Stratton
NUMBER OF ACRES ATTRIBUTED TO WELL 10

LOCATION OF WELL:

2310 feet north of SE corner
3960 feet west of SE corner
SW/4 Sec. 18 T. 11S R. 21W.
COUNTY Irego

PLAT

(Show location of well and shade attributable acreage)
(Show footage to nearest lease or unit boundary line)



SEWARD CO.

The undersigned hereby certifies that he is authorized agent for Lincoln Oil Co. (Co.), a duly authorized agent, that all information shown hereon is true and correct to the best of his knowledge and belief, and that all acreage claimed as attributable to the well named herein is held by production from that well.

Richard L. Cornett *Richard L. Cornett*

Subscribed and sworn to before me on this 11th day of October 19 90

Virginia Lee Smith
Notary Public

My Commission expires August 25, 1992 Virginia Lee Smith

(6-1989)

STATE 10-11-1990
OCT 11 1990
API 15-195-22062-00-00
WICHITA, KANSAS

