

**CONFIDENTIAL**

3-12-08

**ORIGINAL**

KANSAS CORPORATION COMMISSION  
OIL & GAS CONSERVATION DIVISION  
**WELL COMPLETION FORM**  
WELL HISTORY - DESCRIPTION OF WELL & LEASE

Form ACO-1  
September 1999  
Form Must Be Typed

Operator: License # 5447  
Name: OXY USA Inc.  
Address: P.O. Box 2528  
City/State/Zip: Liberal, KS 67905  
Purchaser: NA  
Operator Contact Person: Rafael Bacigalpo  
Phone: (620) 629-4200  
Contractor: Name: Murfin Drilling Co., Inc.  
License: 30606  
Wellsite Geologist: NA  
Designate Type of Completion:  
 New Well  Re-Entry  Workover  
 Oil  SWD  SIOW  Temp. Abd.  
 Gas  ENHR  SIGW  
 Dry  Other (Core, WSW, Expl, Cathodic, etc)  
If Workover/Re-entry: Old Well Info as follows:  
Operator: \_\_\_\_\_  
Well Name: \_\_\_\_\_

Original Comp. Date: \_\_\_\_\_ Original Total Depth: \_\_\_\_\_  
 Deepening  Re-perf.  Conv. To Enhr./SWD  
 Plug Back  Plug Back Total Depth  
 Commingled  Docket No. \_\_\_\_\_  
 Dual Completion  Docket No. \_\_\_\_\_  
 Other (SWD or Enhr.?)  Docket No. \_\_\_\_\_  
12/01/06 12/10/06 02/06/07  
Spud Date or Date Reached TD Completion Date or  
Recompletion Date Recompletion Date

API No. 15 - 081-475-21694-00-00  
County: Haskell  
     - NW - SW - SW Sec 2 Twp 30S S. R. 34W  
784 feet from S / N (circle one) Line of Section  
509 feet from E / W (circle one) Line of Section  
Footages Calculated from Nearest Outside Section Corner:  
(circle one) NE SE NW SW  
Lease Name: MLP Black B Well #: 1  
Field Name: Eubank South  
Producing Formation: Chester  
Elevation: Ground: 2986 Kelly Bushing: 2997  
Total Depth: 5600 Plug Back Total Depth: 5558  
Amount of Surface Pipe Set and Cemented at 1875 feet  
Multiple Stage Cementing Collar Used?  Yes  No  
If yes, show depth set \_\_\_\_\_  
If Alternate II completion, cement circulated from \_\_\_\_\_  
feet depth to \_\_\_\_\_ w/ \_\_\_\_\_ sx cmt.

Drilling Fluid Management Plan ATI Mt 6-10-08  
(Data must be collected from the Reserve Pit)  
Chloride content 1400 mg/l ppm Fluid volume 1500 bbls  
Dewatering method used Evaporation  
Location of fluid disposal if hauled offsite: \_\_\_\_\_  
Operator Name: \_\_\_\_\_  
Lease Name: \_\_\_\_\_ License No.: \_\_\_\_\_  
Quarter \_\_\_\_\_ Sec. \_\_\_\_\_ Twp. \_\_\_\_\_ S. R.  East  West  
County: \_\_\_\_\_ Docket No.: \_\_\_\_\_

INSTRUCTIONS: An original and two copies of this form shall be filed with the Kansas Corporation Commission, 130 S. Market - Room 2078, Wichita, Kansas 6702, within 120 days of the spud date, recompletion, workover or conversion of a well. Rule 82-3-130, 82-3-106 and 82-3-107 apply. Information of side two of this form will be held confidential for a period of 12 months if requested in writing and submitted with the form (see rule 82-3-107 for confidentiality in excess of 12 months). One copy of all wireline logs and geologist well report shall be attached with this form. ALL CEMENTING TICKETS MUST BE ATTACHED. Submit CP-4 form with all plugged wells. Submit CP-111 form with all temporarily abandoned wells.

All requirements of the statutes, rules and regulations promulgated to regulate the oil and gas industry have been fully complied with and the statements herein are complete and correct to the best of my knowledge.

Signature: [Signature]  
Title: Capital Project Date 03/12/2007  
Subscribed and sworn to before me this 12 day of March  
20 07  
Notary Public: Anita Peterson  
Date Commission Expires: Oct. 1, 2007

KCC Office Use Only  
4 Letter of Confidentiality Attached  
If Denied, Yes  Date: \_\_\_\_\_  
\_\_\_\_ Wireline Log Received  
\_\_\_\_ Geologist Report Received  
\_\_\_\_ UIC Distribution  
**RECEIVED**  
KANSAS CORPORATION COMMISSION  
MAR 13 2007

**ANITA PETERSON**  
Notary Public - State of Kansas  
My Appt. Expires October 1, 2009

CONSERVATION DIVISION  
WICHITA, KS

Operator Name: OXY USA Inc. Lease Name: MLP Black B Well #: 1

Sec. 2 Twp. 30 S. R. 34W  East  West County: Haskell

**Instructions:** Show important tops and base of formations penetrated. Detail all cores. Report all final copies of drill stems tests giving interval tested, time tool open and closed, flowing and shut-in pressures, whether shut-in pressure reached static level, hydrostatic pressures, bottom hole temperature, fluid recovery, and flow rates if gas to surface test, along with final chart(s). Attach extra sheet if more space is needed. Attach copy of all Electric Wireline Logs surveyed. Attach final geological well site report.

Drill Stem Tests Taken <input type="checkbox"/> Yes <input checked="" type="checkbox"/> No <i>(Attach Additional Sheets)</i>  Samples Sent to Geological Survey <input type="checkbox"/> Yes <input checked="" type="checkbox"/> No  Cores Taken <input type="checkbox"/> Yes <input checked="" type="checkbox"/> No  Electric Log Run <input checked="" type="checkbox"/> Yes <input type="checkbox"/> No <i>(Submit Copy)</i>  List All E. Logs Run: <u>Cement Bond Log</u> <u>Microlog</u> <u>Array Sonic</u> <u>Spectral Density Dual Spaced Neutron</u> <u>Array Compensated Resistivity</u>	<input checked="" type="checkbox"/> Log Formation (Top), Depth and Datum <input type="checkbox"/> Sample <table style="width:100%; border-collapse: collapse;"> <tr> <td style="width:60%;">Name</td> <td style="width:20%;">Top</td> <td style="width:20%;">Datum</td> </tr> <tr> <td>Heebner</td> <td>4046</td> <td>-1049</td> </tr> <tr> <td>Lansing</td> <td>4148</td> <td>-1151</td> </tr> <tr> <td>Kansas City</td> <td>4601</td> <td>-1604</td> </tr> <tr> <td>Marmaton</td> <td>4756</td> <td>-1759</td> </tr> <tr> <td>Cherokee</td> <td>4928</td> <td>-1931</td> </tr> <tr> <td>Atoka</td> <td>5215</td> <td>-2218</td> </tr> <tr> <td>Morrow</td> <td>5265</td> <td>-2268</td> </tr> </table> <p style="text-align: center;">(See Side Three)</p>	Name	Top	Datum	Heebner	4046	-1049	Lansing	4148	-1151	Kansas City	4601	-1604	Marmaton	4756	-1759	Cherokee	4928	-1931	Atoka	5215	-2218	Morrow	5265	-2268
Name	Top	Datum																							
Heebner	4046	-1049																							
Lansing	4148	-1151																							
Kansas City	4601	-1604																							
Marmaton	4756	-1759																							
Cherokee	4928	-1931																							
Atoka	5215	-2218																							
Morrow	5265	-2268																							

CASING RECORD <input checked="" type="checkbox"/> New <input type="checkbox"/> Used							
Report all strings set-conductor, surface, intermediate, production, etc.							
Purpose of String	Size Hole Drilled	Size Casing Set(in. O.D.)	Weight Lbs./ft.	Setting Depth	Type of Cement	# Sacks Used	Type and Percent Additives
Conductor					C		
Surface	12 1/4	8 5/8	24	1867	C	585	Poz C + additives
					C	195	Class C + additives
Production	7 7/8	5 1/2	17		C	275	Poz H + additives

**ADDITIONAL CEMENTING / SQUEEZE RECORD**

Purpose:	Depth Top Bottom	Type of Cement	#Sacks Used	Type and Percent Additives
<input type="checkbox"/> Perforate				
<input type="checkbox"/> Protect Casing	-			
<input type="checkbox"/> Plug Back TD				
<input type="checkbox"/> Plug off Zone	-			

Shots Per Foot	PERFORATION RECORD - Bridge Plugs Set/type Specify Footage of Each Interval Perforated	Acid, Fracture, Shot, Cement Squeeze Record (Amount and Kind of Material Used)	Depth
4	5382-5405	60 bbls acid 123 Flush	
		17,777 gals 15# X-link foamed @ 70% N2 & 113,660# 20/40 Sand (last 45,000# w/PropNET)	

TUBING RECORD	Size 2 3/8	Set At 5422	Packer At	Liner Run <input type="checkbox"/> Yes <input checked="" type="checkbox"/> No
---------------	---------------	----------------	-----------	--

Date of First, Resumed Production, SWD or Enhr. 03/07/2007	Producing Method <input type="checkbox"/> Flowing <input checked="" type="checkbox"/> Pumping <input type="checkbox"/> Gas Lift <input type="checkbox"/> Other (Explain) P&A
---	---

Estimated Production Per 24 Hours	Oil BBLS 0	Gas Mcf 171	Water Bbls 9	Gas-Oil Ratio	Gravity
-----------------------------------	---------------	----------------	-----------------	---------------	---------

Disposition of Gas  Vented  Sold  Used on Lease  Open Hole  Perf.  Dually Comp.  Other (Specify) \_\_\_\_\_

METHOD OF COMPLETION

Production Interval **RECEIVED**  
**KANSAS CORPORATION COMMISSION**  
**MAR 13 2007**

Side Three

Operator Name: OXY USA Inc. Lease Name: MLP Black B Well #: 1  
Sec. 2 Twp. 30 S. R. 34W  East  West County: Haskell

<u>Name</u>	<u>Top</u>	<u>Datum</u>
Chester	5381	-2384
St Genevieve	5465	-2468
TD	5600	

KCC  
MAR 1 2 2007  
CONFIDENTIAL

RECEIVED  
KANSAS CORPORATION COMMISSION

MAR 1 3 2007

CONSERVATION DIVISION  
WICHITA, KS



# Cementing Service Report

# KCC

## MAR 12 2007

Customer  
OXY RESOURCE CALIFORNIA LLCJob Number  
2205552338  
**CONFIDENTIAL**

Well MLP BLACK B 1		Location (legal) SEC 2-T30S-R34W		Schlumberger Location Perryton, TX		Job Start 2006-Dec-11			
Field EUBANK SOUTH		Formation Name/Type		Deviation °		Bit Size 7.88 in	Well MD 5,600 ft	Well TVD 5,600 ft	
County HASKELL		State/Province KANSAS		BHP psi	BHST 136 °F	BHCT °F	Pore Press. Gradient psi/ft		
Well Master: 0630872740		API / UWI: 15081216940000		Casing/Liner					
Rig Name MURFIN 20	Drilled For Oil & Gas	Service Via Land		Depth, ft 5600	Size, in 5.5	Weight, lb/ft 17	Grade K55	Thread 8RD	
Offshore Zone	Well Class New	Well Type Development		Tubing/Drill Pipe					
Drilling Fluid Type Bentonite		Max. Density 9.2 lb/gal	Plastic Viscosity 20 cp	Depth,	Size, in	Weight, lb/ft	Grade	Thread	
Service Line Cementing	Job Type Cem Prod Casing			Perforations/Open Hole					
Max. Allowed Tubing Pressure 1500 psi	Max. Allowed Ann. Pressure psi	Wellhead Connection 5 1/2" H&SM		Top, ft	Bottom, ft	spf	No. of Shots	Total Interval ft	
Service Instructions CEMENT 5 1/2" CASING WITH: 20 BBL CW100 275 SK 50/50 POZ:H+2%D20+3%M117+5 pps D42+5 pps D53+0.6%D112+ 0.25%D65+0.25%D46 {275 sx downhole and 25 for rodent holes}				Treat Down Casing	Displacement 129 bbl	Packer Type	Packer Depth ft		
				Tubing Vol. bbl	Casing Vol. 130 bbl	Annular Vol. 173 bbl	Open Hole Vol 337 bbl		
Casing/Tubing Secured <input checked="" type="checkbox"/>		1 Hole Volume Circulated prior to Cementing <input checked="" type="checkbox"/>		Casing Tools			Squeeze Job		
Lift Pressure: psi		Pipe Rotated <input type="checkbox"/>		Pipe Reciprocated <input checked="" type="checkbox"/>		Shoe Type: Guide	Squeeze Type		
No. Centralizers: 24		Top Plugs: 1	Bottom Plugs:		Shoe Depth: 5597 ft	Tool Type:			
Cement Head Type: Single		Stage Tool Type:		Stage Tool Depth: ft	Tool Depth: ft				
Job Scheduled For: 2006-Dec-11 20:40		Arrived on Location: 2006-Dec-12 0:00	Leave Location:		Collar Type: Float	Tail Pipe Size: in			
				Collar Depth: 5555 ft	Tail Pipe Depth: ft				
					Sqz Total Vol: bbl				
Date	Time	CMT TREAT PRES	CMT DENS	CMT RATE	CMT VOL	CMT TPLX RATE	CMT TPLX VOL	0	Message
	24 hr clock	psi	lb/gal	bbl/min	bbl	bbl/min	bbl	0	
2006-Dec-11	21:38	27	8.31	0.0	0.0	0.0	0.0	0	
2006-Dec-11	21:39	0	8.31	0.0	0.0	0.0	0.0	0	
2006-Dec-11	21:40	0	8.31	0.0	0.0	0.0	0.0	0	
2006-Dec-11	21:41	0	8.31	0.0	0.0	0.0	0.0	0	
2006-Dec-11	21:42	23	8.35	2.6	0.1	0.0	0.0	0	
2006-Dec-11	21:43								Start Job
2006-Dec-11	21:43	146	8.31	1.8	0.7	1.7	0.4	0	
2006-Dec-11	21:43								Pressure Test Lines
2006-Dec-11	21:43	137	8.31	1.8	0.8	1.7	0.5	0	
2006-Dec-11	21:43	119	8.31	1.8	1.8	1.7	1.5	0	
2006-Dec-11	21:44	27	8.31	0.0	2.0	0.0	1.6	0	
2006-Dec-11	21:45	2161	8.31	0.0	2.0	0.0	1.6	0	
2006-Dec-11	21:46	1932	8.31	0.0	2.0	0.0	1.6	0	
2006-Dec-11	21:47	14	8.31	0.0	2.0	0.0	1.6	0	
2006-Dec-11	21:48	23	8.31	0.5	2.0	0.0	1.6	0	
2006-Dec-11	21:49								Start Pumping Wash
2006-Dec-11	21:49	96	8.31	1.4	2.1	1.8	1.8	0	
2006-Dec-11	21:49	32	8.31	1.1	3.8	0.0	3.4	0	
2006-Dec-11	21:50	18	8.31	0.0	3.8	0.0	3.4	0	
2006-Dec-11	21:51	330	8.31	5.7	6.2	5.5	5.8	0	
2006-Dec-11	21:52	343	8.57	6.2	12.1	5.9	11.6	0	
2006-Dec-11	21:53	316	11.59	1.8	18.1	6.2	17.6	0	

**RECEIVED**  
KANSAS CORPORATION COMMISSIONMAR 13 2007  
Page 1 of 4

Well		Field			Service Date		Customer		Job Number
MLP BLACK B #1		EUBANK SOUTH			06345-Dec-11		OXY RESOURCE CALIFORNIA LLC		2205552338
Date	Time	CMT TREAT PRES	CMT DENS	CMT RATE	CMT VOL	CMT TPLX RATE	CMT TPLX VOL	0	Message
	24 hr clock	psi	lb/gal	bbl/min	bbl	bbl/min	bbl	0	
2006-Dec-11	21:54	206	8.32	3.8	22.5	3.8	19.7	0	
2006-Dec-11	21:54								End Wash
2006-Dec-11	21:54								Reset Total, Vol = 22.61 .bbl
2006-Dec-11	21:54	215	8.32	3.8	22.6	3.8	19.8	0	
2006-Dec-11	21:54	229	8.31	3.8	0.1	3.8	0.1	0	
2006-Dec-11	21:54								Start Pumping Water
2006-Dec-11	21:54								End Water
2006-Dec-11	21:54	197	8.31	3.9	1.1	3.8	1.1	0	
2006-Dec-11	21:54	201	8.37	3.8	2.1	3.8	2.1	0	
2006-Dec-11	21:55	220	9.88	3.1	5.9	3.8	5.9	0	
2006-Dec-11	21:56								Reset Total, Vol = 5.94 bbl
2006-Dec-11	21:56	233	10.05	3.2	5.9	3.8	5.9	0	
2006-Dec-11	21:56	5	11.22	5.4	1.3	0.0	0.5	0	
2006-Dec-11	21:57	5	11.25	5.2	0.0	0.0	0.0	0	
2006-Dec-11	21:58								Start rat hole
2006-Dec-11	21:58	5	11.27	5.1	0.0	0.0	0.0	0	
2006-Dec-11	21:58	5	12.74	5.3	0.0	0.0	0.0	0	
2006-Dec-11	21:59	69	12.89	2.3	2.1	0.0	0.0	0	
2006-Dec-11	22:00	-5	13.04	3.2	4.4	0.0	0.0	0	
2006-Dec-11	22:01	-5	13.53	5.2	4.6	0.0	0.0	0	
2006-Dec-11	22:03	0	13.23	5.3	4.6	0.0	0.0	0	
2006-Dec-11	22:04	0	13.23	5.3	4.6	0.0	0.0	0	
2006-Dec-11	22:05	73	13.22	2.2	6.5	0.0	0.0	0	
2006-Dec-11	22:06	87	10.36	2.3	7.7	3.0	0.4	0	
2006-Dec-11	22:07	0	12.88	4.6	7.7	0.0	0.5	0	
2006-Dec-11	22:08	9	12.89	4.6	7.7	0.0	0.5	0	
2006-Dec-11	22:09	311	14.36	2.1	7.8	3.0	0.7	0	
2006-Dec-11	22:09								Reset Total, Vol = 7.88 bbl
2006-Dec-11	22:09	279	14.44	2.3	7.9	3.0	0.8	0	
2006-Dec-11	22:09	270	14.58	2.7	0.2	3.0	0.2	0	
2006-Dec-11	22:09								Start Mixing Tail Slurry
2006-Dec-11	22:10	504	13.91	5.8	4.5	5.9	4.9	0	
2006-Dec-11	22:11	197	13.53	4.4	9.3	5.1	10.6	0	
2006-Dec-11	22:12	183	14.59	4.4	13.7	5.1	15.6	0	
2006-Dec-11	22:13	137	13.62	4.4	18.0	5.1	20.7	0	
2006-Dec-11	22:14	183	13.43	5.7	23.2	6.5	26.8	0	
2006-Dec-11	22:15	197	13.24	5.6	28.8	6.5	33.4	0	
2006-Dec-11	22:16	307	14.14	6.7	34.8	6.8	40.0	0	
2006-Dec-11	22:17	151	13.78	4.6	40.6	4.7	45.9	0	
2006-Dec-11	22:18	179	13.73	4.9	45.2	5.1	50.6	0	
2006-Dec-11	22:19	211	13.75	5.5	50.3	5.6	55.8	0	
2006-Dec-11	22:20	220	13.76	5.9	55.9	6.0	61.5	0	
2006-Dec-11	22:21	165	13.80	4.7	61.4	5.3	67.3	0	
2006-Dec-11	22:22	192	13.65	5.3	66.9	5.4	73.0	0	
2006-Dec-11	22:23	96	13.62	3.7	70.8	3.0	76.4	0	
2006-Dec-11	22:23	-14	13.54	0.3	73.6	0.0	78.5	0	
2006-Dec-11	22:23								End Tail Slurry
2006-Dec-11	22:23	-9	13.54	0.1	73.6	0.0	78.5	0	
2006-Dec-11	22:23								Start Mixing Tail Slurry
2006-Dec-11	22:23								Drop Top Plug
2006-Dec-11	22:23	-9	13.54	0.0	73.6	0.0	78.5	0	
2006-Dec-11	22:24	-9	13.54	0.0	73.6	0.0	78.5	0	
2006-Dec-11	22:24								Reset Total, Vol = 78.5 bbl
2006-Dec-11	22:24	-9	13.54	0.0	0.0	0.0	0.0	0	

KCC

MAR 1 2 2007

CONFIDENTIAL

RECEIVED

WICHITA CORPORATION COMMISSION

MAR 1 3 2007

Well		Field			Service Date		Customer		Job Number
MLP BLACK B #1		EUBANK SOUTH			06345-Dec-11		OXY RESOURCE CALIFORNIA LLC		220552338
Date	Time	CMT TREAT PRES	CMT DENS	CMT RATE	CMT VOL	CMT TPLX RATE	CMT TPLX VOL	0	Message
	24 hr clock	psi	lb/gal	bbl/min	bbl	bbl/min	bbl	0	
2006-Dec-11	22:24	-9	13.54	0.0	0.0	0.0	0.0	0	
2006-Dec-11	22:24								Start Displacement
2006-Dec-11	22:25	0	13.51	0.0	0.0	0.0	0.0	0	
2006-Dec-11	22:26	0	13.54	0.0	0.0	0.0	0.0	0	
2006-Dec-11	22:27	201	9.43	4.5	0.0	4.9	2.8	0	
2006-Dec-11	22:28	179	10.35	4.1	0.0	5.0	7.7	0	
2006-Dec-11	22:29	188	8.39	5.3	0.0	5.0	12.6	0	
2006-Dec-11	22:30	0	8.35	0.0	0.0	0.0	14.0	0	
2006-Dec-11	22:31	-9	8.32	0.0	0.0	0.0	14.0	0	
2006-Dec-11	22:32	55	8.30	5.3	4.0	3.7	16.0	0	
2006-Dec-11	22:33	55	8.30	5.3	9.3	3.7	19.7	0	
2006-Dec-11	22:34	60	8.30	5.3	14.6	3.7	23.4	0	
2006-Dec-11	22:35	55	8.30	5.5	19.9	3.7	27.1	0	
2006-Dec-11	22:36	60	8.30	5.7	25.6	3.7	30.8	0	
2006-Dec-11	22:37	73	8.30	5.7	31.3	5.3	35.3	0	
2006-Dec-11	22:38	64	8.30	5.7	37.2	5.3	40.7	0	
2006-Dec-11	22:39	64	8.30	5.7	42.8	5.3	45.9	0	
2006-Dec-11	22:40	64	8.31	5.8	48.6	5.4	51.2	0	
2006-Dec-11	22:41	64	8.31	5.8	54.3	5.3	56.6	0	
2006-Dec-11	22:42	69	8.30	5.7	60.1	5.4	61.9	0	
2006-Dec-11	22:43	69	8.30	5.8	65.8	5.4	67.3	0	
2006-Dec-11	22:44	69	8.30	5.8	71.6	5.4	72.7	0	
2006-Dec-11	22:45	69	8.30	5.8	77.4	5.4	78.1	0	
2006-Dec-11	22:46	69	8.30	5.8	83.1	5.4	83.4	0	
2006-Dec-11	22:47	192	8.30	5.4	88.8	5.5	88.9	0	
2006-Dec-11	22:48	293	8.30	5.6	94.5	5.5	94.4	0	
2006-Dec-11	22:49	307	8.30	5.7	100.2	5.6	100.0	0	
2006-Dec-11	22:50	385	8.30	5.7	105.9	5.6	105.6	0	
2006-Dec-11	22:51	645	8.30	5.8	111.6	5.7	111.3	0	
2006-Dec-11	22:52	682	8.30	4.1	117.0	4.1	116.5	0	
2006-Dec-11	22:53	682	8.30	3.0	120.8	3.0	120.3	0	
2006-Dec-11	22:54	742	8.30	3.0	123.8	3.0	123.3	0	
2006-Dec-11	22:55	801	8.30	3.0	126.8	2.9	126.2	0	
2006-Dec-11	22:56	856	8.30	3.0	129.8	2.9	129.2	0	
2006-Dec-11	22:57	1089	8.30	0.0	132.2	0.0	131.4	0	
2006-Dec-11	22:58	1158	8.30	0.0	132.2	0.0	131.4	0	
2006-Dec-11	22:58								End Displacement
2006-Dec-11	22:58	-5	8.30	0.0	132.2	0.0	131.4	0	
2006-Dec-11	22:59								130 bbl of displacement by tanks
2006-Dec-11	22:59	-9	8.30	0.0	132.2	0.0	131.4	0	
2006-Dec-11	22:59	0	8.30	0.0	0.0	0.0	0.0	0	
2006-Dec-11	22:59								End Job
2006-Dec-11	22:59	-5	8.30	0.0	0.0	0.0	0.0	0	

KCC  
MAR 12 2007  
CONFIDENTIAL

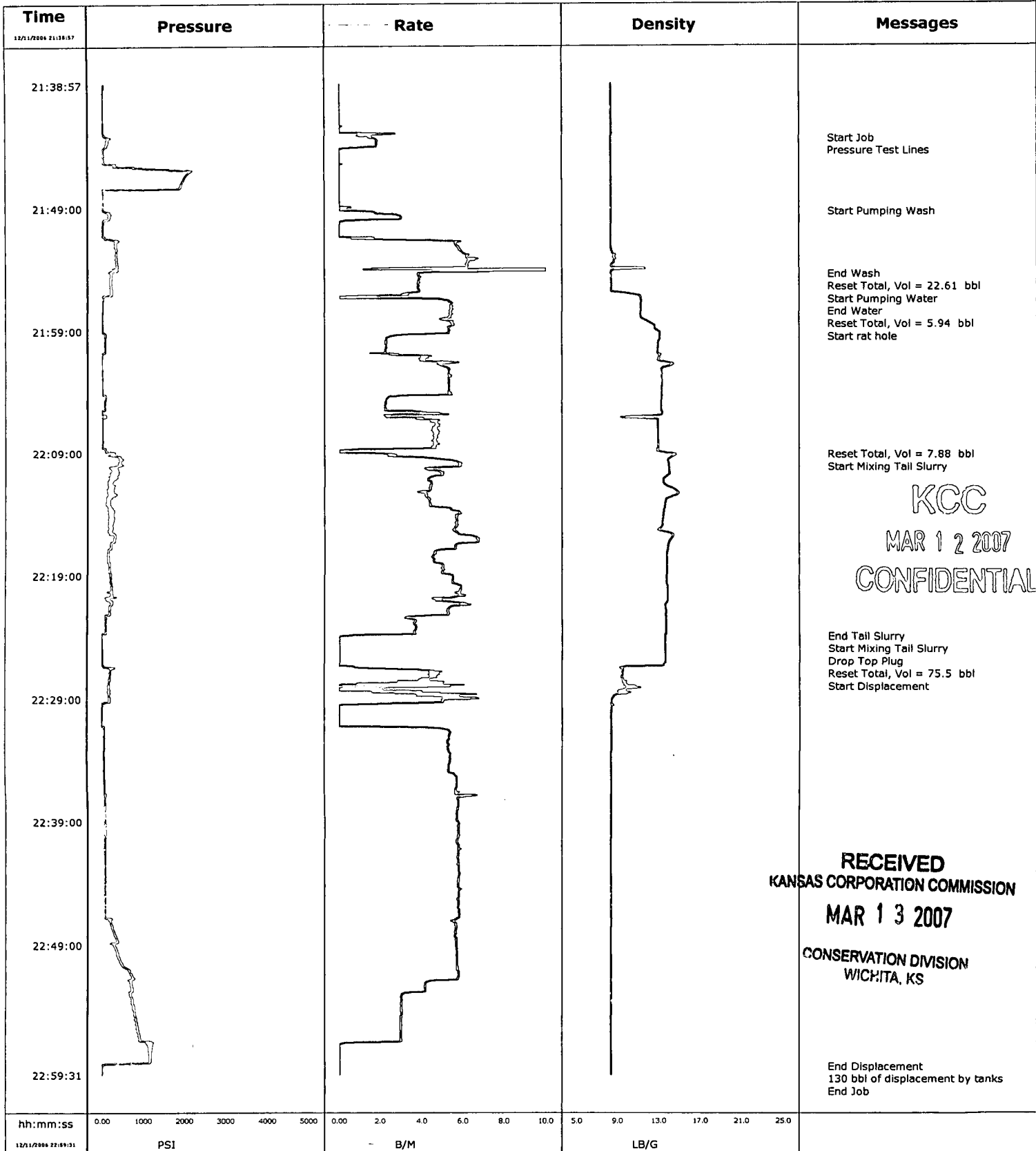
RECEIVED  
KANSAS CORPORATION COMMISSION  
MAR 13 2007  
Page 3 of 4  
CONSERVATION DIVISION  
WICHITA, KS

Well MLP BLACK B #1		Field EUBANK SOUTH		Service Date 06345-Dec-11		Customer OXY RESOURCE CALIFORNIA LLC		Job Number 2205552338	
Date	Time 24 hr clock	CMT TREAT PRES psi	CMT DENS lb/gal	CMT RATE bbl/min	CMT VOL bbl	CMT TPLX RATE bbl/min	CMT TPLX VOL bbl	0	Message 0
<b>Post Job Summary</b>									
Average Pump Rates, bpm					Volume of Fluid Injected, bbl				
Slurry	N2	Mud	Maximum Rate		Total Slurry	Mud	Spacer	N2	
4			6		75.5		25		
Treating Pressure Summary, psi					Breakdown Fluid				
Maximum	Final	Average	Bump Plug to	Breakdown	Volume		Density		
900		300					bbl		lb/gal
Avg. N2 Percent	Designed Slurry Volume		Displacement	Mix Water Temp	<input type="checkbox"/> Cement Circulated to Surface?		Volume		
%	76 bbl		130 bbl	65 °F	<input type="checkbox"/> Washed Thru Perfs		To	ft	
Customer or Authorized Representative Bevans, Ronald			Schlumberger Supervisor Grigoriev, Valeriy			<input type="checkbox"/> CirculationLost		<input checked="" type="checkbox"/> Job Completed	

KCC  
MAR 1 2 2007  
CONFIDENTIAL

**RECEIVED**  
KANSAS CORPORATION COMMISSION  
MAR 1 3 2007  
CONSERVATION DIVISION  
WICHITA, KS

<b>Well</b>	MLP Black B 1	<b>Client</b>	Oxy Resource
<b>Field</b>	Eubank South	<b>SIR No.</b>	2205552338
<b>Engineer</b>	Val Grigoriev	<b>Job Type</b>	5 1/2 Production Casing
<b>Country</b>	United States	<b>Job Date</b>	12-11-2006







# Cementing Service Report

Customer OXY RESOURCE CALIFORNIA LLC						Job Number 2205552459			
Well MLP BLACK B 1			Location (legal) SEC 2-T30S-R34W			Schlumberger Location Perryton, TX		Job Start 2006-Dec-03	
Field EUBANK SOUTH		Formation Name/Type		Deviation	Bit Size 12.3 in	Well MD 1,750 ft	Well TVD 1,750 ft		
County HASKELL		State/Province KANSAS		BHP psi	BHST 98 °F	BHCT °F	Pore Press. Gradient psi/ft		
Well Master: 0630872740		API / UWI: 15081216940000		Casing/Liner					
Rig Name MURFIN 20	Drilled For Oil & Gas	Service Via Land		Depth, ft 1750	Size, in 8.63	Weight, lb/ft 24	Grade	Thread 8RD	
Offshore Zone	Well Class New	Well Type Development		Tubing/Drill Pipe					
Drilling Fluid Type		Max. Density lb/gal	Plastic Vi: cp	Depth,	Size, in	Weight, lb/ft	Grade	Thread	
Service Line Cementing	Job Type Cem Surface Casing			Perforations/Open Hole					
Max. Allowed Tubing Pressure 1500 psi	Max. Allowed Ann. Pressure psi	WellHead Connection 8 5/8" H&SM		Top, ft	Bottom, ft	spf	No. of Shots	Total Interval ft	
Service Instructions CEMENT 8 5/8" SURFACE CASING WITH: 10 BBL FRESH WATER 585 SK 35:65 POZ C + 6% D020 + 2% S001 + 0.25 pps D130 195 SK CLASS C + 2% S001 + 0.125 pps D130 DISPLACE WITH FRESH WATER				Treat Down Casing	Displacement bbl	Packer Type	Packer Depth ft		
Casing/Tubing Secured <input checked="" type="checkbox"/>	1 Hole Volume Circulated prior to Cementing <input type="checkbox"/>			Tubing Vol. bbl	Casing Vol. bbl	Annular Vol. bbl	OpenHole Vol bbl		
Lift Pressure: 500 psi				Casing Tools		Squeeze Job			
Pipe Rotated <input type="checkbox"/>	Pipe Reciprocated <input type="checkbox"/>			Shoe Type:	Squeeze Type				
No. Centralizers:	Top Plugs: 1	Bottom Plugs:		Shoe Depth: ft	Tool Type:				
Cement Head Type: Single				Stage Tool Type	Tool Depth: ft				
Job Scheduled For:	Arrived on Location: 2006-Dec-03 4:00	Leave Location: 2006-Dec-03		Stage Tool Depth: ft	Tail Pipe Size: in				
Collar Type:	Collar Depth: ft			Collar Depth: ft	Tail Pipe Depth: ft				
Squeeze Total Vol: bbl									
Date	Time	Treating Pressure psi	Density lb/gal	CMT RATE bbl/min	CMT VOL bbl	CS NRD RATE bbl/min	CS NRD TOTAL bbl	0	Message
2006-Dec-03	5:34	55	8.29	0.0	0.0	2.5	0.0	0	
2006-Dec-03	5:34	55	8.29	0.0	0.0	2.5	0.1	0	
2006-Dec-03	5:34								Start Job
2006-Dec-03	5:34	55	8.29	0.0	0.0	2.5	0.1	0	
2006-Dec-03	5:34								Start Pumping Spacer
2006-Dec-03	5:34								Pressure Test Lines
2006-Dec-03	5:34	55	8.29	0.0	0.0	2.5	0.3	0	
2006-Dec-03	5:35	69	8.29	0.0	0.0	2.6	1.3	0	
2006-Dec-03	5:35	0	8.30	0.0	0.0	0.0	1.9	0	
2006-Dec-03	5:36	334	8.30	0.4	0.0	0.3	2.3	0	
2006-Dec-03	5:36	78	8.30	0.0	0.1	2.8	3.7	0	
2006-Dec-03	5:37	27	8.30	0.0	0.1	0.0	4.1	0	
2006-Dec-03	5:37	1144	8.31	0.1	0.1	0.0	4.2	0	
2006-Dec-03	5:38	23	8.31	0.0	0.1	0.0	4.2	0	
2006-Dec-03	5:38	78	8.31	0.0	0.1	2.9	4.3	0	
2006-Dec-03	5:39	101	8.31	3.6	0.3	3.3	5.6	0	
2006-Dec-03	5:39	307	8.30	5.5	2.6	5.7	7.9	0	
2006-Dec-03	5:40	284	8.31	5.6	5.4	5.8	10.8	0	
2006-Dec-03	5:40								End Spacer
2006-Dec-03	5:40	270	8.31	5.6	6.1	5.9	11.6	0	
2006-Dec-03	5:40	284	8.31	5.7	6.6	5.9	12.1	0	
2006-Dec-03	5:40								Start Mixing Lead Slurry

KCC  
MAR 1 2 2007  
CONFIDENTIAL

RECEIVED  
KANSAS CORPORATION COMMISSION  
MAR 1 3 2007  
CONSERVATION DIVISION  
WICHITA, KS

Well		Field			Service Date		Customer		Job Number	
MLP BLACK B #1		EUBANK SOUTH			06337-Dec-03		OXY RESOURCE CALIFORNIA LLC		2205552459	
Date	Time	Treating Pressure	Density	CMT RATE	CMT VOL	CS NRD RATE	CS NRD TOTAL	0	Message	
	24 hr clock	psi	lb/gal	bbl/min	bbl	bbl/min	bbl	0		
2006-Dec-03	5:40	256	8.77	5.1	8.1	6.0	13.8	0		
2006-Dec-03	5:40								Reset Total, Vol = 8.52 bbl	
2006-Dec-03	5:40	256	9.05	5.1	8.5	6.1	14.3	0		
2006-Dec-03	5:41	261	10.64	5.2	2.1	6.1	2.5	0		
2006-Dec-03	5:41	256	12.21	5.3	4.7	5.9	5.5	0		
2006-Dec-03	5:42	261	13.08	5.4	7.4	5.5	8.4	0		
2006-Dec-03	5:42	266	12.85	6.1	10.2	6.1	11.2	0		
2006-Dec-03	5:43	252	12.40	6.1	13.2	6.1	14.3	0		
2006-Dec-03	5:43	233	12.13	6.2	16.3	6.3	17.3	0		
2006-Dec-03	5:44	238	11.89	6.2	19.4	6.3	20.5	0		
2006-Dec-03	5:44	224	11.93	6.1	22.4	6.4	23.7	0		
2006-Dec-03	5:45	224	12.20	6.1	25.3	5.2	26.6	0		
2006-Dec-03	5:45	224	12.49	5.9	28.6	6.2	29.8	0		
2006-Dec-03	5:46	215	12.53	6.0	31.6	6.1	32.9	0		
2006-Dec-03	5:46	201	12.37	5.9	34.6	6.1	35.9	0		
2006-Dec-03	5:47	197	12.10	6.0	37.6	6.1	39.0	0		
2006-Dec-03	5:47	197	11.82	6.1	40.7	6.3	42.1	0		
2006-Dec-03	5:48	192	11.79	6.2	43.8	6.4	45.3	0		
2006-Dec-03	5:48	201	11.98	6.2	46.9	6.6	48.5	0		
2006-Dec-03	5:49	201	12.26	6.3	50.0	6.6	51.9	0		
2006-Dec-03	5:49	165	12.37	5.8	53.1	6.0	55.0	0		
2006-Dec-03	5:50	169	12.27	5.8	56.0	6.0	58.0	0		
2006-Dec-03	5:50	165	12.23	5.8	58.9	6.0	61.0	0		
2006-Dec-03	5:51	174	12.25	5.8	61.8	6.1	64.1	0		
2006-Dec-03	5:51	165	11.92	5.9	64.7	5.9	67.0	0		
2006-Dec-03	5:52	183	11.85	6.2	67.7	6.6	70.1	0		
2006-Dec-03	5:52	179	12.27	6.0	70.8	6.5	73.4	0		
2006-Dec-03	5:53	192	12.65	6.0	73.8	6.3	76.6	0		
2006-Dec-03	5:53	197	12.78	6.1	76.9	6.3	79.8	0		
2006-Dec-03	5:54	192	12.79	6.1	79.9	6.3	82.9	0		
2006-Dec-03	5:54	192	12.73	6.1	83.0	6.3	86.1	0		
2006-Dec-03	5:55	179	12.43	6.0	86.0	6.1	89.2	0		
2006-Dec-03	5:55	174	12.28	6.1	89.1	6.3	92.3	0		
2006-Dec-03	5:56	188	12.53	6.0	92.1	6.4	95.5	0		
2006-Dec-03	5:56	188	12.80	6.1	95.1	6.3	98.7	0		
2006-Dec-03	5:57	179	12.54	6.1	98.2	6.1	101.8	0		
2006-Dec-03	5:57	174	12.16	6.1	101.2	6.2	104.9	0		
2006-Dec-03	5:58	169	12.08	6.1	104.3	6.3	108.0	0		
2006-Dec-03	5:58	169	12.13	6.1	107.3	6.3	111.2	0		
2006-Dec-03	5:59	188	12.34	6.0	110.4	6.3	114.4	0		
2006-Dec-03	5:59	160	12.53	5.5	113.3	5.7	117.4	0		
2006-Dec-03	6:00	160	12.53	5.6	116.1	5.8	120.4	0		
2006-Dec-03	6:00	165	12.47	5.6	119.0	5.9	123.3	0		
2006-Dec-03	6:01	165	12.43	5.6	121.8	5.8	126.2	0		
2006-Dec-03	6:01	156	12.35	5.7	124.6	6.0	129.1	0		
2006-Dec-03	6:02	160	12.21	5.8	127.6	6.0	132.1	0		
2006-Dec-03	6:02	160	12.20	5.7	130.4	5.9	135.1	0		
2006-Dec-03	6:03	156	12.22	5.7	133.3	5.9	138.1	0		
2006-Dec-03	6:03	151	12.03	5.7	136.1	5.8	141.0	0		
2006-Dec-03	6:04	165	12.27	5.8	139.0	6.2	144.0	0		
2006-Dec-03	6:04	169	12.73	5.7	141.8	6.0	147.1	0		
2006-Dec-03	6:05	160	12.69	5.7	144.7	5.8	150.0	0		
2006-Dec-03	6:05	169	12.52	6.0	147.6	6.1	153.0	0		
2006-Dec-03	6:06	174	12.32	6.0	150.6	6.1	156.1	0		

KCC  
MAR 12 2007  
CONFIDENTIAL

RECEIVED  
KANSAS CORPORATION COMMISSION  
MAR 13 2007  
CONSERVATION DIVISION  
WICHITA, KS

Well		Field			Service Date		Customer		Job Number	
MLP BLACK B #1		EUBANK SOUTH			06337-Dec-03		OXY RESOURCE CALIFORNIA LLC		2205552459	
Date	Time	Treating Pressure	Density	CMT RATE	CMT VOL	CS NRD RATE	CS NRD TOTAL	0	0	Message
	24 hr clock	psi	lb/gal	bbl/min	bbl	bbl/min	bbl			
2006-Dec-03	6:06	156	12.18	5.7	153.5	5.9	159.1	0		
2006-Dec-03	6:07	156	12.14	5.8	156.4	5.9	162.1	0		
2006-Dec-03	6:07	156	12.11	5.7	159.2	5.9	165.0	0		
2006-Dec-03	6:08	151	12.11	5.7	162.1	5.9	168.0	0		
2006-Dec-03	6:08	151	12.00	5.6	164.9	5.9	170.9	0		
2006-Dec-03	6:09	169	12.45	5.7	167.8	6.1	173.9	0		
2006-Dec-03	6:09	165	12.82	5.7	170.6	5.9	176.9	0		
2006-Dec-03	6:10	165	12.79	5.7	173.5	5.8	179.9	0		
2006-Dec-03	6:10	156	12.57	5.6	176.3	5.8	182.8	0		
2006-Dec-03	6:11	160	12.44	5.7	179.2	5.9	185.7	0		
2006-Dec-03	6:11	151	12.31	5.6	182.0	5.8	188.6	0		
2006-Dec-03	6:12	179	12.27	6.1	185.0	6.4	191.7	0		
2006-Dec-03	6:12	183	12.34	6.2	188.1	6.5	194.9	0		
2006-Dec-03	6:13	183	12.37	6.1	191.2	6.3	198.1	0		
2006-Dec-03	6:13	183	12.35	6.1	194.3	6.3	201.3	0		
2006-Dec-03	6:14	179	12.13	6.2	197.3	6.3	204.5	0		
2006-Dec-03	6:14	183	11.95	6.1	199.3	6.4	206.5	0		
2006-Dec-03	6:14									End Lead Slurry
2006-Dec-03	6:14	183	11.95	6.2	199.5	6.4	206.7	0		
2006-Dec-03	6:14									Start Mixing Tail Slurry
2006-Dec-03	6:14	183	11.98	6.0	200.4	6.5	207.7	0		
2006-Dec-03	6:14									Reset Total, Vol = 200.90 bbl
2006-Dec-03	6:14	174	12.06	5.5	200.9	6.1	208.2	0		
2006-Dec-03	6:15	179	12.71	5.5	2.3	6.0	2.5	0		
2006-Dec-03	6:15	188	13.47	5.5	5.0	5.9	5.5	0		
2006-Dec-03	6:16	183	13.88	5.4	7.8	5.8	8.4	0		
2006-Dec-03	6:16	192	14.22	5.4	10.5	5.8	11.2	0		
2006-Dec-03	6:17	197	14.52	5.5	13.2	5.8	14.1	0		
2006-Dec-03	6:17	201	14.84	5.5	16.0	5.7	17.0	0		
2006-Dec-03	6:18	206	14.94	5.5	18.7	5.6	19.9	0		
2006-Dec-03	6:18	197	14.75	5.5	21.4	5.7	22.7	0		
2006-Dec-03	6:19	179	14.52	5.2	24.1	5.3	25.4	0		
2006-Dec-03	6:19	169	14.33	5.2	26.7	5.3	28.1	0		
2006-Dec-03	6:20	156	14.00	5.2	29.3	5.2	30.7	0		
2006-Dec-03	6:20	5	14.04	0.0	29.6	3.0	32.3	0		
2006-Dec-03	6:21	284	15.11	5.9	31.0	6.1	34.6	0		
2006-Dec-03	6:21	224	14.63	6.0	34.0	6.1	37.6	0		
2006-Dec-03	6:22	183	15.01	4.9	36.6	5.2	40.4	0		
2006-Dec-03	6:22	179	15.23	4.9	39.0	5.0	42.9	0		
2006-Dec-03	6:23	156	14.75	4.9	41.5	5.0	45.4	0		
2006-Dec-03	6:23	101	15.03	3.7	43.5	3.9	47.6	0		
2006-Dec-03	6:24	124	15.55	3.7	45.3	4.3	49.6	0		
2006-Dec-03	6:24									End Tail Slurry
2006-Dec-03	6:24	-14	15.48	0.0	46.6	2.1	51.1	0		
2006-Dec-03	6:24	-14	15.43	0.0	46.6	1.3	51.1	0		
2006-Dec-03	6:24									Drop Top Plug
2006-Dec-03	6:24									Start Displacement
2006-Dec-03	6:24	-14	15.39	0.0	46.6	0.8	51.1	0		
2006-Dec-03	6:24	-9	15.25	0.0	46.6	0.3	51.2	0		
2006-Dec-03	6:24									Reset Total, Vol = 200.90 bbl
2006-Dec-03	6:24	-9	15.21	0.0	0.0	0.1	0.0	0		
2006-Dec-03	6:25	-3749	-6.25	0.0	0.0	0.0	0.0	0		
2006-Dec-03	6:25	-9	14.29	0.0	0.0	0.0	0.0	0		
2006-Dec-03	6:26	-9	13.74	0.0	0.0	0.0	0.0	0		

KCC

MAR 1 2 2007

CONFIDENTIAL

RECEIVED  
KANSAS CORPORATION COMMISSION

MAR 1 3 2007

CONSERVATION DIVISION  
WICHITA, KS

Well		Field			Service Date		Customer		Job Number
MLP BLACK B #1		EUBANK SOUTH			06337-Dec-03		OXY RESOURCE CALIFORNIA LLC		2205552459
Date	Time	Treating Pressure	Density	CMT RATE	CMT VOL	CS NRD RATE	CS NRD TOTAL	0	Message
	24 hr clock	psi	lb/gal	bbl/min	bbl	bbl/min	bbl	0	
2006-Dec-03	6:26	-9	13.15	0.0	0.0	0.0	0.0	0	
2006-Dec-03	6:27	-9	12.60	0.0	0.0	0.0	0.0	0	
2006-Dec-03	6:27	-9	11.96	0.0	0.0	0.0	0.0	0	
2006-Dec-03	6:28	-9	10.93	0.0	0.0	0.0	0.0	0	
2006-Dec-03	6:28	-9	10.34	0.0	0.0	0.0	0.0	0	
2006-Dec-03	6:29	-9	10.05	0.0	0.0	0.0	0.0	0	
2006-Dec-03	6:29	-9	9.94	0.0	0.0	0.0	0.0	0	
2006-Dec-03	6:30	-5	9.85	0.0	0.0	0.0	0.0	0	
2006-Dec-03	6:30	-5	9.76	0.0	0.0	0.0	0.0	0	
2006-Dec-03	6:31	-5	9.66	0.0	0.0	0.0	0.0	0	
2006-Dec-03	6:31	-5	9.60	0.0	0.0	0.0	0.0	0	
2006-Dec-03	6:32	-5	9.53	0.0	0.0	0.0	0.0	0	
2006-Dec-03	6:32	-5	9.47	0.0	0.0	0.0	0.0	0	
2006-Dec-03	6:33	-5	9.42	0.0	0.0	0.0	0.0	0	
2006-Dec-03	6:33	87	9.19	5.0	1.3	5.3	1.5	0	
2006-Dec-03	6:34	92	9.13	5.1	3.9	5.5	4.2	0	
2006-Dec-03	6:34	92	8.86	5.2	6.4	5.4	6.8	0	
2006-Dec-03	6:35	87	8.56	5.2	9.0	5.5	9.5	0	
2006-Dec-03	6:35	69	8.42	5.2	11.6	5.5	12.3	0	
2006-Dec-03	6:36	-3749	-6.25	0.0	13.9	0.0	14.7	0	
2006-Dec-03	6:36	124	8.31	5.2	16.1	5.0	17.0	0	
2006-Dec-03	6:37	114	8.10	5.1	18.7	5.4	19.6	0	
2006-Dec-03	6:37	133	8.18	5.2	21.3	5.6	22.3	0	
2006-Dec-03	6:38	142	8.30	5.2	23.9	5.2	25.0	0	
2006-Dec-03	6:38	151	8.33	5.2	26.5	5.2	27.6	0	
2006-Dec-03	6:39	174	8.34	5.6	29.2	4.9	30.3	0	
2006-Dec-03	6:39	183	8.35	5.6	32.0	5.7	33.1	0	
2006-Dec-03	6:40	192	8.35	5.6	34.8	5.6	35.9	0	
2006-Dec-03	6:40	197	8.35	5.6	37.6	5.6	38.7	0	
2006-Dec-03	6:41	211	8.35	5.6	40.4	5.7	41.5	0	
2006-Dec-03	6:41	224	8.35	5.6	43.2	5.7	44.4	0	
2006-Dec-03	6:42	233	8.35	5.5	46.0	5.7	47.2	0	
2006-Dec-03	6:42	243	8.35	5.5	48.7	5.6	50.0	0	
2006-Dec-03	6:43	252	8.35	5.5	51.5	5.6	52.8	0	
2006-Dec-03	6:43	266	8.35	5.6	54.3	5.7	55.6	0	
2006-Dec-03	6:44	270	8.35	5.5	57.1	5.6	58.4	0	
2006-Dec-03	6:44	284	8.35	5.5	59.8	5.6	61.2	0	
2006-Dec-03	6:45	316	8.35	5.8	62.6	5.7	64.0	0	
2006-Dec-03	6:45	325	8.35	5.6	65.4	5.6	66.8	0	
2006-Dec-03	6:46	334	8.35	5.5	68.2	5.6	69.5	0	
2006-Dec-03	6:46	352	8.35	5.6	71.0	5.6	72.3	0	
2006-Dec-03	6:47	375	8.35	5.6	73.8	5.6	75.1	0	
2006-Dec-03	6:47	375	8.35	5.6	76.5	5.6	77.9	0	
2006-Dec-03	6:48	403	8.35	5.5	79.3	5.6	80.7	0	
2006-Dec-03	6:48	435	8.35	5.6	82.1	5.6	83.5	0	
2006-Dec-03	6:49	444	8.35	5.6	84.9	5.6	86.3	0	
2006-Dec-03	6:49	458	8.35	5.6	87.7	5.6	89.1	0	
2006-Dec-03	6:50	476	8.35	5.7	90.5	5.7	91.9	0	
2006-Dec-03	6:50	508	8.35	5.6	93.3	5.1	94.7	0	
2006-Dec-03	6:51	513	8.35	5.6	96.1	5.7	97.5	0	
2006-Dec-03	6:51	540	8.35	5.7	99.0	5.7	100.3	0	
2006-Dec-03	6:52	558	8.35	5.7	101.8	5.7	103.2	0	
2006-Dec-03	6:52	581	8.35	5.7	104.7	5.8	106.0	0	
2006-Dec-03	6:53	499	8.35	2.7	107.0	3.2	108.5	0	

KCC

MAR 12 2007

CONFIDENTIAL

RECEIVED  
KANSAS CORPORATION COMMISSION

MAR 13 2007

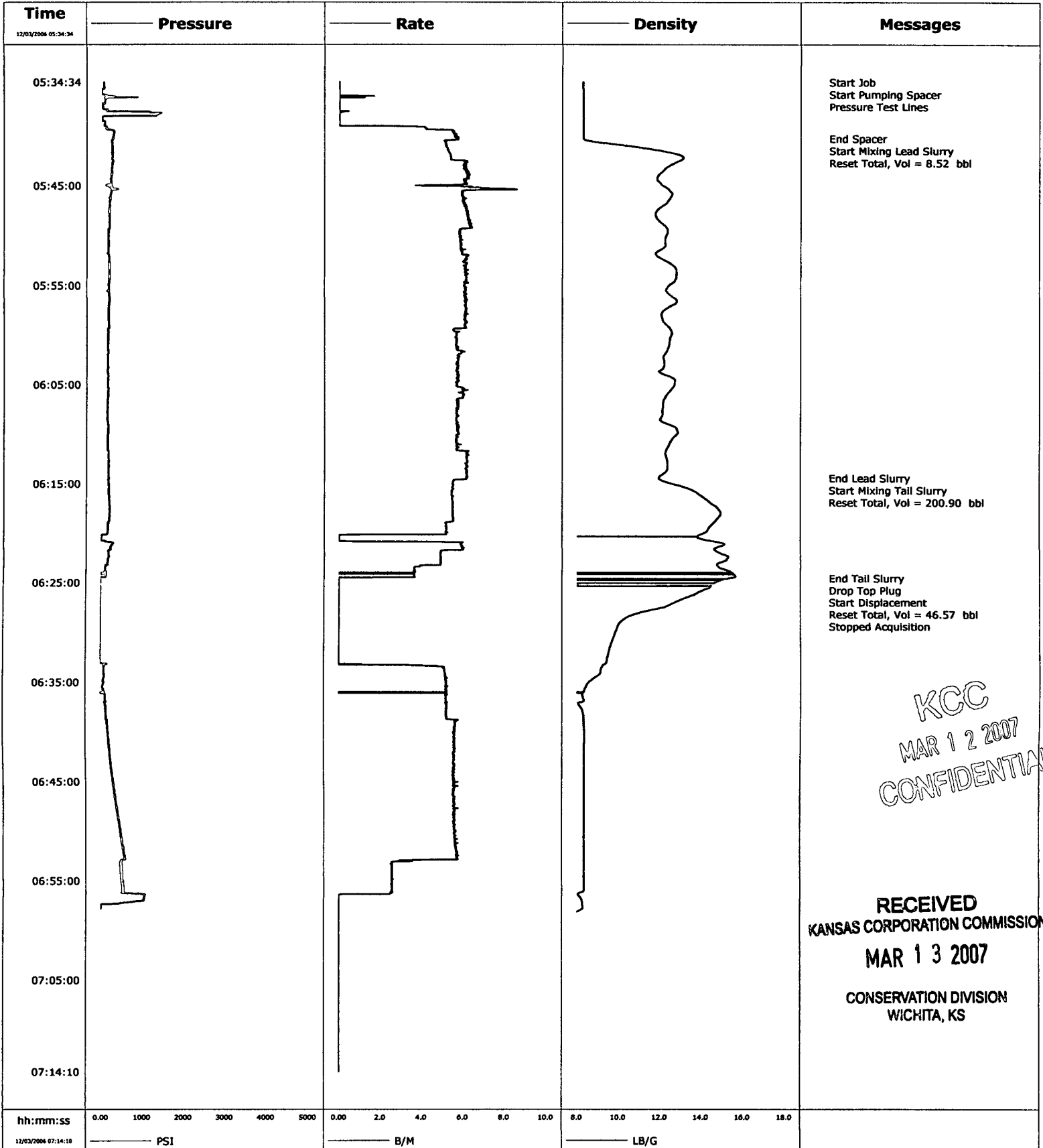
CONSERVATION DIVISION  
WICHITA, KS

Well		Field			Service Date		Customer		Job Number	
MLP BLACK B #1		EUBANK SOUTH			06337-Dec-03		OXY RESOURCE CALIFORNIA LLC		2205552459	
Date	Time	Treating Pressure	Density	CMT RATE	CMT VOL	CS NRD RATE	CS NRD TOTAL	0	Message	
	24 hr clock	psi	lb/gal	bbbl/min	bbbl	bbbl/min	bbbl	0		
2006-Dec-03	6:53	490	8.35	2.6	108.3	2.6	109.8	0		
2006-Dec-03	6:54	513	8.35	2.6	109.6	2.7	111.1	0		
2006-Dec-03	6:54	536	8.35	2.6	110.9	2.7	112.4	0		
2006-Dec-03	6:55	504	8.35	2.6	112.2	2.7	113.7	0		
2006-Dec-03	6:55	545	8.35	2.6	113.5	2.7	115.0	0		
2006-Dec-03	6:56	540	8.34	2.6	114.7	2.7	116.3	0		
2006-Dec-03	6:56	1048	8.14	0.0	115.5	0.0	117.2	0		
2006-Dec-03	6:57	948	8.26	0.0	115.5	0.0	117.2	0		
2006-Dec-03	6:57	0	8.30	0.0	115.5	0.0	117.2	0		
Post Job Summary										
Average Pump Rates, bpm					Volume of Fluid Injected, bbl					
Slurry	N2		Mud	Maximum Rate	Total Slurry	Mud	Spacer	N2		
5.5				6	273.6		10			
Treating Pressure Summary, psi					Breakdown Fluid					
Maximum	Final	Average	Bump Plug to	Breakdown	Volume			Density		
500		250	1000		bbl			8.34 lb/gal		
Avg. N2 Percent	Designed Slurry Volume		Displacement	Mix Water Temp	Cement Circulated to Surface?		Volume			
%	273.6 bbl		116.62 bbl	°F	<input type="checkbox"/>		bbl			
Customer or Authorized Representative			Schlumberger Supervisor		Washed Thru Perfs		To	ft		
Bevans, Ronald			Flanagan, Patrick		<input type="checkbox"/>		CirculationLost			
					<input type="checkbox"/>		Job Completed			

KCC  
MAR 1 2 2007  
CONFIDENTIAL

RECEIVED  
KANSAS CORPORATION COMMISSION  
MAR 1 3 2007  
CONSERVATION DIVISION  
WICHITA, KS

<b>Well</b>	MLP Black B-1	<b>Client</b>	Oxy Resource California
<b>Field</b>	Eubank South	<b>SIR No.</b>	
<b>Engineer</b>		<b>Job Type</b>	8 5/8" surface casing
<b>Country</b>	United States	<b>Job Date</b>	12-03-2006



KCC  
MAR 1 2 2007  
CONFIDENTIAL

RECEIVED  
KANSAS CORPORATION COMMISSION  
MAR 1 3 2007  
CONSERVATION DIVISION  
WICHITA, KS



3-12-08

OXY USA Inc.  
1701 N. Kansas, Liberal, KS 67901  
P.O. Box 2528, Liberal, KS 67905-2528

March 12, 2007

Kansas State Corporation Commission  
Conservation Division, Finney State Office Building  
130 S. Market, Room 2078  
Wichita, KS 67202-3802

KCC  
MAR 12 2007  
CONFIDENTIAL

RE: MLP Black B-1  
SW/4 2-30S-34W  
Haskell County, Kansas

Dear Sir:

**Please file confidential.** The following items are being submitted for the above referenced well which was recently drilled.

1. KANSAS STATE FORM ACO-1 + 2 copies
2. CEMENT TICKETS
3. GEOLOGICAL REPORT
4. A SET OF ELECTRIC LOGS

If there are any questions or you require further information, please contact me at the above address or by phone at (620) 629-4229.

Sincerely,

Rafael Bacigalupo  
Financial Planning Analyst/Capital Projects

Enclosures

Cc: OXY - Houston  
OXY - Well File

RECEIVED  
KANSAS CORPORATION COMMISSION  
MAR 13 2007  
CONSERVATION DIVISION  
WICHITA, KS