

STATE CORPORATION COMMISSION OF KANSAS
OIL & GAS CONSERVATION DIVISION

WELL COMPLETION OR RECOMPLETION FORM
ACO-1 WELL HISTORY

DESCRIPTION OF WELL AND LEASE

Operator: License #9726.....
Name .Gross Petroleum Mgmt. Inc.....
Address 900 Building of the Southwest.....
City/State/Zip ..Midland TX 79701.....

Purchaser Koch Oil Co
KC-KC

Operator Contact Person Earl Levea
Phone ..915/682-8319.....

Contractor: License #5147.....
NameBeredco Inc.....

Wellsite Geologist.....Steve Murphy.....
Phone.....316/262-7397.....

Designate Type of Completion
 New Well Re-Entry Workover
 Oil SWD Temp Abd
 Gas Inj Delayed Comp.
 Dry Other (Core, Water Supply etc.)

If OWWO: old well info as follows:
Operator
Well Name
Comp. DateOld Total Depth.....

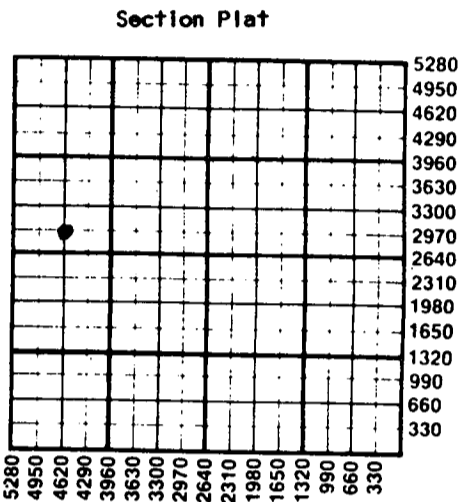
WELL HISTORY

Drilling Method:
 Mud Rotary Air Rotary Cable
..8/7/85.... ..8/17/85.... ..9/17/85....
Spud Date Date Reached TD Completion Date
4700'..... ...4659'.....
Total Depth PBDT
Amount of Surface Pipe Set and Cemented at 299' feet
Multiple Stage Cementing Collar Used? Yes No
If yes, show depth set.....2562' feet
If alternate 2 completion, cement circulated
from...2562' feet depth to...surface / 525' SX cmt

API NO. 15-...15-109-20392-00-00.....
County.....Logan.....
2233' FNL & 660' FWL
S/2.SWNW Sec...5...Twp 11S Rge 32W East West

..2970'.... Ft North from Southeast Corner of Section
..4620'.... Ft West from Southeast Corner of Section
(Note: Locate well in section plat below)

Lease Name.....Heyen.....Well #.....2.....
Field Name.....U-Pac South.....
Producing Formation.....Lansing.....
Elevation: Ground.....3088'.....KB.....3093'



Section Plat
WATER SUPPLY INFORMATION
Disposition of Produced Water: Disposal Repressuring
Docket #

Questions on this portion of the ACO-1 call:
Water Resources Board (913) 296-3717
Source of Water:
Division of Water Resources Permit #.....*T-85-726.....
 Groundwater...3020 Ft North from Southeast Corner
*(Well) ..4680 Ft West from Southeast Corner of
Sec 5 Twp 11S Rge 32 East West
 Surface Water.....Ft North from Southeast Corner
(Stream, pond etc).....Ft West from Southeast Corner
Sec Twp Rge East West
 Other (explain).....
(purchased from city, R.W.D. #)

INSTRUCTIONS: This form shall be completed in duplicate and filed with the Kansas Corporation Commission, 200 Colorado Derby Building, Wichita, Kansas 67202, within 90 days after completion or recompletion of any well. Rule 82-3-130 and 82-3-107 apply.
Information on side two of this form will be held confidential for a period of 12 months if requested in writing and submitted with the form. See rule 82-3-107 for confidentiality in excess of 12 months.
One copy of all wireline logs and drillers time log shall be attached with this form. Submit CP-4 form with all plugged wells. Submit CP-111 form with all temporarily abandoned wells.

All requirements of the statutes, rules and regulations promulgated to regulate the oil and gas industry have been fully complied with and the statements herein are complete and correct to the best of my knowledge.

Signature Brenda Matusek
Title.....Engineering Assistant..... Date10/14/85.....

Subscribed and sworn to before me this 14th day of October
19.....
Notary Public.....Teresa K. Tankersley.....

Date Commission Expires.....TERESA K. TANKERSLEY.....
STATE CORPORATION COMMISSION

K.C.C. OFFICE USE ONLY
F Letter of Confidentiality Attached
C Wireline Log Received
C Drillers Timelog Received
Distribution
 KCC SWD/Rep NGPA
 KGS Plug Other
(Specify)



RECEIVED
OCT 17 1985
10-17-1985
CONSERVATION DIVISION
Wichita, Kansas

Sec. 5 Twp 11 S Rge 32 W

SIDE TWO

Operator Name Gruss Petroleum Mgmt. Inc. Lease Name Heyen Well # 2

Sec. 5 Twp. 11S Rge. 32W East West County Logan

WELL LOG

INSTRUCTIONS: Show important tops and base of formations penetrated. Detail all cores. Report all drill stem tests giving interval tested, time tool open and closed, flowing and shut-in pressures, whether shut-in pressure reached static level, hydrostatic pressures, bottom hole temperature, fluid recovery, and flow rates if gas to surface during test. Attach extra sheet if more space is needed. Attach copy of log.

Drill Stem Tests Taken Yes No
 Samples Sent to Geological Survey Yes No
 Cores Taken Yes No

Formation Description
 Log Sample

DST #1 4086'-4105' Lansing B
 IHP 2102# 45 mins, IFP 23-69# 30 mins
 ISIP 1215# 60 mins, FFP 81-161# 45 mins
 FSIP 1215# 90 mins, FHP 2097# 45 mins, BHT 108

DST #2 4125'-4160' Lansing B
 IHP 2136# IFP (30 mins) 46-127# , ISIP (60 mins) 1283# ,
 FFP 150-219# (45 mins), FSIP (90 mins) 1283# ,
 FHP 2113# , BHT 118

DST #3 4186'-4225' Lansing H
 IHP 2136# 30 mins, IFP 69-207# 60 mins
 ISIP 1249# 45 mins, FFP 253-392# 60 mins
 FSIP 1237# 45 mins, FHP 2113# 30 mins, BHT 116.

Name	Top	Bottom
sand/shale	0	300'
shale	300'	900'
sand/shale	900'	1730'
shale/sand	1730'	2505'
shale/lime	2505'	3165'
lime/shale	3165'	4635'
Cherokee	4635'	4645'
lime/shale	4645'	4700'

DST #4 Lansing I 4235-4290
 IHP 2147# , IFP (30 mins) 46-115# , ISIP (60 mins) 1237# ,
 FFP (45 min) 150-253# , FSIP (90 mins) 1215# , FHP 2124# BHT 118

DST #5 4254-75 Lansing J
 IHP 2714# , IFP (30 mins) 35-35# ,
 ISIP (60 mins) 35# , FFP (30 mins) 35-35#
 FSIP (60 mins) 30# , FHP 2714# , BHT 118

DST #6 Lansing K 4283-4303
 IHP 2136# , IFP (30 mins) 23-104# , ISIP (60 mins) 1237# , FFP 45 (mins) 127-207# , FSIP (90 mins) 1226# ,
 FHP 2113# , BHT 116

DST #7 4311-4325 Lansing L
 IHP 2158# , IFP (30 mins) 23-23# , FFP (45 mins) 23-23# , FSIP (90 mins) 23# , ISIP (60 mins) 23# ,
 FHP 2136# , BHT 116

DST #8 4595-4635 Johnson
 IHP 2357# , IFP (30 mins) 46-81# , ISIP (60 mins) 1126# ,
 FFP (45 mins) 92-138# , FSIP (90 mins) 1112# , FHP 2385#
 BHT 118

CASING RECORD New Used

Report all strings set-conductor, surface, intermediate, production, etc.

Purpose of String	Size Hole Drilled	Size Casing Set (in O.D.)	Weight Lbs/Ft.	Setting Depth	Type of Cement	#Sacks Used	Type and Percent Additives
..surface.....	..12 1/4".....	..8.578".....	..24#.....	..299'.....	50:50 POZ	95 sx.	..2% gel, 3% CaCl2
..Production....	..7.7/8".....	..4 1/2".....	..10.5#.....	..4698'.....	Common 60/40 POZ HLC, 475 sx, 7#	100 sx. 250 sx.	3% CaCl2 2% gel, 18% salt, * Flocelle

PERFORATION RECORD

Acid, Fracture, Shot, Cement Squeeze Record

Shots Per Foot	Specify Footage of Each Interval Perforated	(Amount and Kind of Material Used)	Depth
...3.SPF.....	..4238'-4242'.....	Spot 1 bbl acid	acid w/420 gals NEA acid
...3.SPF.....	..4208'-4213'.....	Spot 1 bbl acid	acid w/525 gals NEA acid

TUBING RECORD Size 2 3/8" Set At 4473' Packer at 4460' Liner Run Yes No

Date of First Production 9/19/85 Producing Method Flowing Pumping Gas Lift Other (explain).....

Estimated Production Per 24 Hours	Oil	Gas	Water	Gas-Oil Ratio	Gravity
119	Bbls	TSTM MCF	5 Bbls	0	CFPB

METHOD OF COMPLETION

Production Interval

Disposition of gas: Vented Open Hole Perforation
 Sold Other (Specify) 4238'-4242'
 Used on Lease Dually Completed 4208'-4213'
 Commingled