

TYPE

15-109-20075-00-00
NOTICE OF INTENTION TO DRILL

C-1

TO BE FILED WITH THE STATE CORPORATION COMMISSION
PRIOR TO COMMENCEMENT OF WELL

API Number 15-109-20,075
(For office use only)

1. Operator Donald C. Slawson

Starting Date aprox May 20, 1977

Address 408 One Twenty Building, Wichita, Kansas County Logan

2. Contractor Slawson Drilling Co., Inc.

Sec 32 Twp 11 S Rge 33W E W

Address 408 One Twenty Building, Wichita, Kansas Spot Location S/2 SE NW

3. Type of Equipment: Rotary X Cable Tool

Nearest Lease Line 330' ft.

4. Well to be Drilled for: Oil X Gas

Lease Name Bertrand 'J'

Disposal Input Other

5. Depth of Deepest Fresh Water within 1 mile 200 ft.

6. Depth of Municipal Water Well within 3 miles NONE ft.

7. Depth to Protect all Fresh Water 250' ft.

Well No. 1

8. Amount of Surface Casing to be set 250' ft.

Est. Total Depth 4800' ft.

9. Alternate No. 1 No. 2 X

REMARKS:

OPERATOR STATES THAT HE WILL COMPLY WITH K. S. A. 55-128

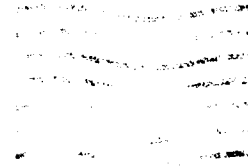
Samples will be saved

Signature of Operator

Donald C. Slawson



845-H



**State Corporation Commission of Kansas
Conservation Division**

~~P.O. Box 17027~~

Wichita, Kansas ~~67217~~

New Address

245 North Water
Wichita, Kansas 67202

RECEIVED
MAY 08 1977
5-9-1977

CONSERVATION DIVISION
WICHITA, KANSAS

(IF PREFERRED, MAIL IN ENVELOPE)