



Operator Name: Keith F. Walker Oil & Gas Company, L.L.C. Lease Name: Hoss Well #: 21 #1  
 Sec. 21 Twp. 31 S. R. 30  East  West County: Meade

**INSTRUCTIONS:** Show important tops and base of formations penetrated. Detail all cores. Report all final copies of drill stems tests giving interval tested, time tool open and closed, flowing and shut-in pressures, whether shut-in pressure reached static level, hydrostatic pressures, bottom hole temperature, fluid recovery, and flow rates if gas to surface test, along with final chart(s). Attach extra sheet if more space is needed. Attach copy of all Electric Wireline Logs surveyed. Attach final geological well site report.

Drill Stem Tests Taken <input checked="" type="checkbox"/> Yes <input type="checkbox"/> No <i>(Attach Additional Sheets)</i>  Samples Sent to Geological Survey <input type="checkbox"/> Yes <input checked="" type="checkbox"/> No  Cores Taken <input type="checkbox"/> Yes <input checked="" type="checkbox"/> No Electric Log Run <input checked="" type="checkbox"/> Yes <input type="checkbox"/> No <i>(Submit Copy)</i>  List All E. Logs Run:  <b>Induction,SDL/DSN,Microlog, CBL</b>	<input checked="" type="checkbox"/> Log    Formation (Top), Depth and Datum <input type="checkbox"/> Sample  <table style="width:100%; border-collapse: collapse;"> <tr> <td style="width:70%;">Name</td> <td style="width:15%;">Top</td> <td style="width:15%;">Datum</td> </tr> <tr> <td>Chase</td> <td>2680'</td> <td></td> </tr> <tr> <td>Council Grove</td> <td>2970'</td> <td></td> </tr> <tr> <td>Heebner</td> <td>4280'</td> <td></td> </tr> <tr> <td>Marmaton</td> <td>5100'</td> <td></td> </tr> <tr> <td>Chester</td> <td>5440'</td> <td></td> </tr> </table>	Name	Top	Datum	Chase	2680'		Council Grove	2970'		Heebner	4280'		Marmaton	5100'		Chester	5440'	
Name	Top	Datum																	
Chase	2680'																		
Council Grove	2970'																		
Heebner	4280'																		
Marmaton	5100'																		
Chester	5440'																		

CASING RECORD <input checked="" type="checkbox"/> New <input type="checkbox"/> Used							
Report all strings set-conductor, surface, intermediate, production, etc.							
Purpose of String	Size Hole Drilled	Size Casing Set (In O.D.)	Weight Lbs. / Ft.	Setting Depth	Type of Cement	# Sacks Used	Type and Percent Additives
Conductor		20"	94#	40'	H-40	150	
Surface		8 5/8"	24#	1662'	J-55	620	
Production		4 1/2"	11.6#	5899'	J-55	350	

ADDITIONAL CEMENTING / SQUEEZE RECORD				
Purpose:	Depth Top Bottom	Type of Cement	#Sacks Used	Type and Percent Additives
<input type="checkbox"/> Perforate <input type="checkbox"/> Protect Casing <input type="checkbox"/> Plug Back TD <input type="checkbox"/> Plug Off Zone				

Shots Per Foot	PERFORATION RECORD - Bridge Plugs Set/Type Specify Footage of Each Interval Perforated	Acid, Fracture, Shot, Cement Squeeze Record (Amount and Kind of Material Used)	Depth
4 Shots Per Foot	Chester 5457'-5540'	Frac with 5774 bbls of slick water, 27000 gallons of 15% HCl and 25% CO2	
	<div style="border: 1px solid black; padding: 5px; display: inline-block;"> <b>KCC</b>  <b>MAY 07 2007</b>  <b>CONFIDENTIAL</b> </div>	<div style="border: 1px solid black; padding: 5px; display: inline-block;"> <b>RECEIVED</b>  <b>KANSAS CORPORATION COMMISSION</b>  <b>MAY 14 2007</b>  <b>CONSERVATION DIVISION</b>  <b>WICHITA, KS</b> </div>	
<b>TUBING RECORD</b> Size <u>2 3/8'</u> Set At <u>5438'</u> Packer At <u>N/A</u>		Liner Run <input type="checkbox"/> Yes <input checked="" type="checkbox"/> No	
Date of First, Resumerd Production, SWD or Enhnr.		Producing Method	
		<input type="checkbox"/> Flowing <input checked="" type="checkbox"/> Pumping <input type="checkbox"/> Gas Lift <input type="checkbox"/> Other (Explain)	
Estimated Production Per 24 Hours	Oil    Bbls. <u>0</u>	Gas    Mcf <u>1000 MCFD</u>	Water    Bbls.    Gas-Oil Ratio    Gravity

Disposition of Gas    **METHOD OF COMPLETION**    Production Interval

Vented     Sold     Used on Lease     Open Hole     Perf.     Dually Comp.     Commingled  
*(If vented, Submit ACO-18.)*     Other (Specify) \_\_\_\_\_

TWINING

# Cementing Job Log

*The Road to Excellence Starts with Safety*

Sold To #: 303246	Ship To #: 2549168	Quote #:	Sales Order #: 4859421
Customer: KEITH WALKER		Customer Rep: Jones, Barry	
Well Name: Hoss	Well #: 21-1	API/UWI #:	
Field:	City (SAP): UNKNOWN	County/Parish: Meade	State: Kansas
Legal Description:			
Lat:		Long:	
Contractor: TITAN DRILLING		Rig/Platform Name/Num: 2 2	
Job Purpose: Cement Surface Casing			Ticket Amount:
Well Type: Development Well		Job Type: Cement Surface Casing	
Sales Person: HESTON, MYRON		Srvc Supervisor: OLIPHANT, CHESTER	MBU ID Emp #: 243055

Activity Description	Date/Time	Cht #	Rate bbl/min	Volume bbl		Pressure psig		Comments
				Stage	Total	Tubing	Casing	
Call Out	01/12/2007 22:00							
Safety Meeting	01/12/2007 23:45							
Arrive at Location from Service Center	01/13/2007 01:00							
Assessment Of Location Safety Meeting	01/13/2007 01:10							
Safety Meeting - Pre Rig-Up	01/13/2007 02:00							
Rig-Up Equipment	01/13/2007 02:05							
Wait on Customer or Customer Sub-Contractor Equip	01/13/2007 06:30							RIG STILL DRILLING / TRIP OUT OF HOLE / BEGIN RUNNING 8 5/8 CASING AND FLOAT EQUIPMENT
Wait on Customer or Customer Sub-Contractor Equipm	01/13/2007 15:45							CASING ON BOTTOM @ 1664 FT / HOOK UP LINES TO MUD / BEGIN CIRCULATION
Safety Meeting - Pre Job	01/13/2007 16:15							SWITCH LINES TO HALLIBURTON
Start Job	01/13/2007 16:25							
Test Lines	01/13/2007 16:26						2000.0	
Pump Lead Cement	01/13/2007 16:28		6	231	0		205.0	470 SK MIDCON II @ 11.6 PPG
Pump Tail Cement	01/13/2007 17:13		6	36	231		250.0	150 SK PREM PLUS @ 14.8 PPG
Shutdown	01/13/2007 17:20				267		185.0	FINISHED MIXING CEMENT

Sold To #: 303246

Ship To #: 2549168

Quote #:

Sales Order #:

4859421

SUMMIT Version: 7.10.386

Saturday, January 13, 2007 05:45:00

RECEIVED  
KANSAS CORPORATION COMMISSION

JAN 26 2009

CONSERVATION DIVISION  
WICHITA, KS

CONFIDENTIAL

**Cementing Job Log**

Activity Description	Date/Time	Cht #	Rate bbl/min	Volume bbl		Pressure psig		Comments
				Stage	Total	Tubing	Casing	
Drop Plug	01/13/2007 17:21							HWE TOP PLUG
Pump Displacement	01/13/2007 17:22		6	103	0		65.0	FRESH WATER DISPLACEMENT
Displ Reached Cmnt	01/13/2007 17:27		6		25		100.0	
Other	01/13/2007 17:40		2		85	425.0	350.0	SLOW RATE TO STAGE CEMENT AND LAND PLUG
Bump Plug	01/13/2007 17:49		2		103		450.0	
Pressure Up	01/13/2007 17:50						1100.0	
Release Casing Pressure	01/13/2007 17:51				103		.0	FLOAT HOLDING / CIRCULATED CEMENT TO PIT
Safety Meeting - Pre Rig-Down	01/13/2007 18:00							
Rig-Down Equipment	01/13/2007 18:10							THANK YOU FOR CALLING HALLIBURTON
End Job	01/13/2007 19:00							CHESTER AND CREW

RECEIVED  
KANSAS CORPORATION COMMISSION

JAN 26 2009

CONSERVATION DIVISION  
WICHITA, KS

Sold To #: 303246

Ship To #: 2549168

Quote #:

Sales Order #:

485942

SUMMIT Version: 7.10.386

Saturday, January 13, 2007 05:45:00

CONFIDENTIAL

Materials									
Stage/Plug #: 1									
Fluid #	Fluid Name	SBM/Material Name	Rqstd Del Qty	UOM	Density lbm/gal	Yield ft <sup>3</sup> /sk	Mix Fluid Gal/sk	Rate bbl/min	Fluid+Liq AddGal/sk
1	LEAD CEMENT	MIDCON-2 CEMENT PREMIUM PLUS - SBM (15079)	470	sacks	11.4	2.95	18.09		
	3 %	CALCIUM CHLORIDE - HI TEST PELLET (100005053) Pre-Mix Dry							
	0.5 lbm	POLY-E-FLAKE (101216940) Pre-Mix Dry							
	0.1 %	WG-17, 50 LB SK (100003623) Pre-Mix Dry							
	18.09 Gal	FRESH WATER Mix-On-Fly to Slurry							
Fluid #	Fluid Name	SBM/Material Name	Rqstd Del Qty	UOM	Density lbm/gal	Yield ft <sup>3</sup> /sk	Mix Fluid Gal/sk	Rate bbl/min	Fluid+Liq AddGal/sk
2	TAIL CEMENT	TAIL CEMENT	150	sacks	14.8	1.34	6.32		
	94 lbm	CMT - PREMIUM PLUS - CLASS C REG OR TYPE III, BULK (100012205) Pre-Mix Dry							
	2 %	CALCIUM CHLORIDE - HI TEST PELLET (100005053) Pre-Mix Dry							
	0.25 lbm	POLY-E-FLAKE (101216940) Pre-Mix Dry							
	6.324 Gal	FRESH WATER Mix-On-Fly to Slurry							
Fluid #	Fluid Name	SBM/Material Name	Rqstd Del Qty	UOM	Density lbm/gal	Yield ft <sup>3</sup> /sk	Mix Fluid Gal/sk	Rate bbl/min	Fluid+Liq AddGal/sk
3	DISPLACEMENT		102.00	bbl					
Caution: Displacement quantities and densities are estimates ONLY! Do not use them for the actual job.									
Sales/Rental/3 <sup>rd</sup> Party									
SAP #	Description		Qty	Qty uom	Supplier	Comments/ Tech ID #			
101314446	SHOE,CSG,TIGER TOOTH,8 5/8 IN 8RD		1	EA					
100004702	VLVASSY,INSR FLOAT,8-5/8 8RD, 24 lbs/ft		1	EA					
100013933	FILLUP ASSY - 1.500 ID - 7 IN. - 8-5/8		1	EA					
100004521	CENTRALIZER ASSY - 8-5/8 CSG X 12-1/4		12	EA					
100004642	CLP,LIM,8 5/8,FRICT,WTH DOGS		1	EA					
100004599	BASKET - CEMENT - 8 5/8 CSG X 12 1/4		2	EA					
100005045	KIT,HALL WELD-A		1	EA					
101227839	PLUG,CMTG,TOP,8 5/8,HWE,7.20 MIN/8.09 MA		1	EA					

Sold To #: 303246

Ship To #: 2549168

Lab Project #:

Sales Order #: 4859421

SUMMIT Version: 7.10.388

Friday, January 12, 2007 09:42:00

Page 2 of 2

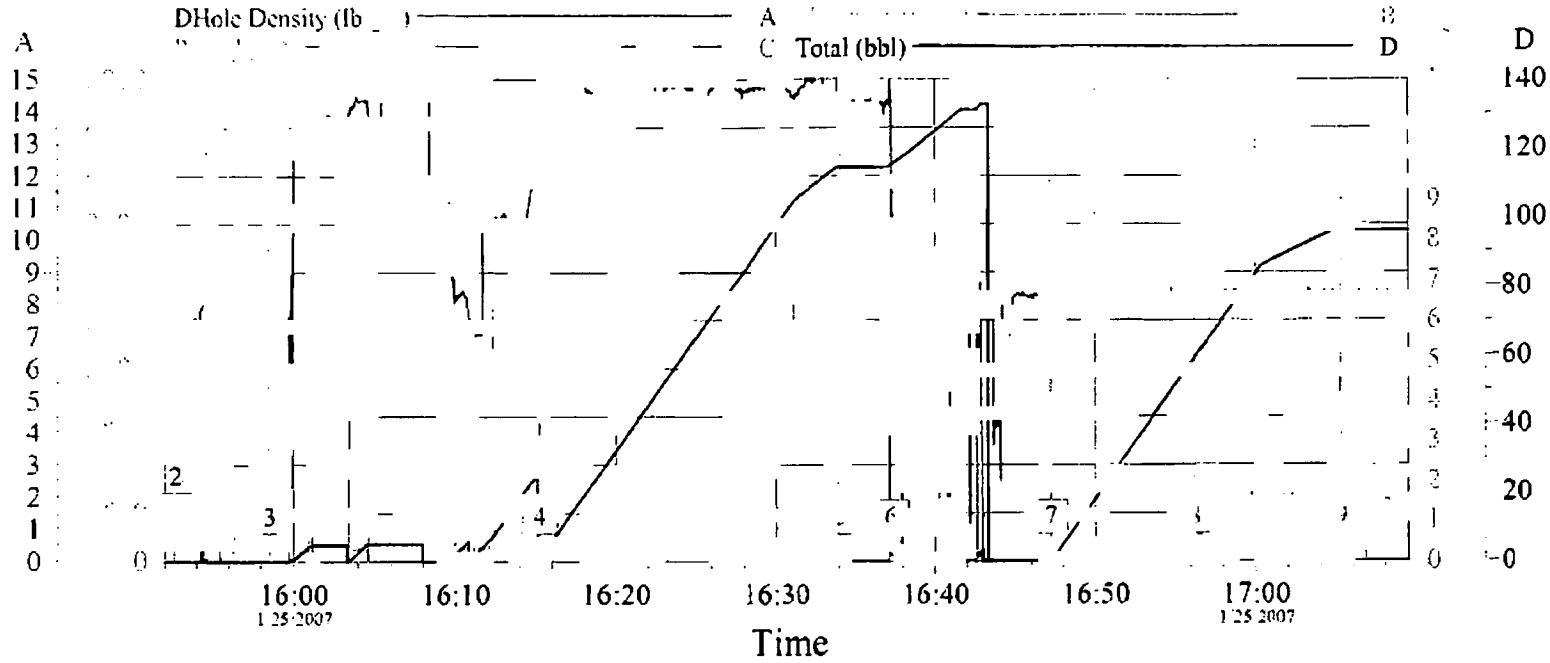
RECEIVED  
KANSAS CORPORATION COMMISSION

JAN 26 2009

CONSERVATION DIVISION  
TOPIKA, KS

CONFIDENTIAL

# HOSS 21#1 (4 1/2 LONGSTRING)



### Event Log

1	Start Job	15:52:34	2	Test Lines	15:52:38	3	Pump Cement	15:58:31
4	Pump Tail Cement	16:15:16	5	Drop Plug	16:34:07	6	Clean Lines	16:37:13
7	Pump Displacement	16:47:13	8	Displ Reached Cement	16:56:12	9	Bump Plug	17:05:14
10	End Job	17:07:15						

Customer:

Job Date:

Ticket #:

CemWin v1.3.0  
25-Jan-07 17:28

RECEIVED  
KANSAS CORPORATION COMMISSION

JAN 26 2009

CONSERVATION DIVISION  
WICHITA, KS

# HALLIBURTON

# CONFIDENTIAL

## Cementing Job Log

The Road to Excellence Starts with Safety

Sold To #: 303246	Ship To #: 2549168	Quote #:	Sales Order #: 4884060
Customer: KEITH WALKER		Customer Rep: Jones, Barry	
Well Name: Hoss	Well #: 21#1	API/UWI #:	
Field:	City (SAP): UNKNOWN	County/Parish: Meade	State: Kansas
Legal Description:			
Lat:		Long:	
Contractor: TITAN DRILLING		Rig/Platform Name/Num: 2	
Job Purpose: Cement Production Casing			Ticket Amount:
Well Type: Development Well		Job Type: Cement Production Casing	
Sales Person: HESTON, MYRON		Srvc Supervisor: WILTSHIRE, MERSHEK	MBU ID Emp #: 195811

Activity Description	Date/Time	CMT #	Rate bbl/min	Volume bbl		Pressure PSIG		Comments
				Stage	Total	Tubing	Casing	
Call Out	01/25/2007 03:00							
Arrive At Loc	01/25/2007 07:00							
Pre-Job Safety Meeting	01/25/2007 07:15							
Start Job	01/25/2007 15:52							
Test Lines	01/25/2007 15:52						3500.0	
Pump Spacer 1	01/25/2007 15:57		5	5			250.0	water
Pump Lead Cement	01/25/2007 15:58		6.5	21			250.0	15 sks prem g @ 14.6#
Pump Tail Cement	01/25/2007 16:15		6.5	62			250.0	405sks prem g @ 10.0#
Drop Top Plug	01/25/2007 16:34		4		93		160.0	end cement/// also pump 5 bbls cement in rat & 5 bbls in mouse
Clean Lines	01/25/2007 16:37							
Pump Displacement	01/25/2007 16:47		6.5	91			80.0	water
Displ Reached Cmnt	01/25/2007 16:56		6.5	75			220.0	
Other	01/25/2007 17:00		2	81			850.0	slow rate
Other	01/25/2007 17:05						950.0	pressure before landing plug
Bump Plug	01/25/2007 17:05		2		91		2000.0	float held
End Job	01/25/2007 17:07							

Sold To #: 7.10.386

Ship To #:

Quote #:

Sales Order #:

SUMMIT Version:

Thursday, January 25, 2007 05:36:00

RECEIVED  
KANSAS CORPORATION COMMISSION

JAN 26 2009

CONSERVATION DIVISION  
WICHITA, KS

CONFIDENTIAL

# HALLIBURTON

## Cementing Job Summary

*The Road to Excellence Starts with Safety*

Sold To #: 303246		Ship To #: 2549168		Quote #:		Sales Order #: 4884060	
Customer: KEITH WALKER				Customer Rep: Jones, Barry			
Well Name: Hoss			Well #: 21#1		API/UWI #:		
Field:		City (SAP): UNKNOWN		County/Parish: Meade		State: Kansas	
Contractor: TITAN DRILLING			Rig/Platform Name/Num: 2				
Job Purpose: Cement Production Casing							
Well Type: Development Well				Job Type: Cement Production Casing			
Sales Person: HESTON, MYRON			Srcv Supervisor: WILTSHIRE, MERSHEK			MBU ID Emp #: 195811	

**Job Personnel**

HES Emp Name	Exp Hrs	Emp #	HES Emp Name	Exp Hrs	Emp #	HES Emp Name	Exp Hrs	Emp #
BROWN, TOMMY	11.0	403627	CHAVEZ, ERIK Adrain	179.0	324693	LOPEZ, CARLOS	11.0	321975
WILTSHIRE, MERSHEK T	11.0	195811						

**Equipment**

HES Unit #	Distance-1 way	HES Unit #	Distance-1 way	HES Unit #	Distance-1 way	HES Unit #	Distance-1 way
10243558	40 mile	10251403C	40 mile	10547690	40 mile	54029	40 mile
6610U	40 mile	75821	40 mile				

**Job Hours**

Date	On Location Hours	Operating Hours	Date	On Location Hours	Operating Hours	Date	On Location Hours	Operating Hours
<b>TOTAL</b>			<i>Total is the sum of each column separately</i>					

Job				Job Times			
Formation Name	Formation Depth (MD)	Top	Bottom	Called Out	Date	Time	Time Zone
Form Type			BHST	On Location			
Job depth MD	5900. ft		Job Depth TVD	5900. ft	Job Started	25 - Jan - 2007	15:52 CST
Water Depth			Wk Ht Above Floor	5. ft	Job Completed	25 - Jan - 2007	17:07 CST
Perforation Depth (MD)	From		To		Departed Loc		

**Well Data**

Description	New / Used	Max pressure psig	Size In	ID In	Weight lbm/ft	Thread	Grade	Top MD ft	Bottom MD ft	Top TVD ft	Bottom TVD ft
8 5/8 SURFACE CASING	Used		8.625	8.097	24.				1650.		
7 7/8 OPEN HOLE				7.875				1650.	5900.		
4 1/2 PRODUCTION PIPE	Used		4.5	4.	11.6				5900.		

**Sales/Remains Party (HES)**

Description	Qty	Qty uom	Depth	Supplier
SHOE,IFS,4-1/2 8RD,INSR FLPR V	1	EA		
FILUP ASSY,1.250 ID,4 1/2,5 IN INSR	1	EA		
CTRZR ASSY,TURBO,API,4 1/2 CSG X 7 7/8	18	EA		
CLAMP-LIMIT-4 1/2-FRICT-W/DOGS	1	EA		
BSKT,CEM,4 1/2 CSG X 6 1/4,8 3/4 H	3	EA		
BAFFLE ASSY - 4-1/2 8RD LATCHDOWN PLUG	1	EA		
PLUG ASSY - 3W LATCHDOWN - 4-1/2 IN	1	EA		
KIT,HALL WELD-A	1	EA		



CONFIDENTIAL

**HALLIBURTON**

*Cementing Job Summary*

Tools and Accessories													
Type	Size	Qty	Make	Depth	Type	Size	Qty	Make	Depth	Type	Size	Qty	Make
Guide Shoe					Packer					Top Plug			
Float Shoe					Bridge Plug					Bottom Plug			
Float Collar					Retainer					SSR plug set			
Insert Float										Plug Container			
Stage Tool										Centralizers			

Miscellaneous Materials														
Gelling Agt	Conc	Surfactant	Conc	Acid Type	Qty	Conc	%	Treatment Fld	Conc	Inhibitor	Conc	Sand Type	Size	Qty

**Fluid Data**

Stage/Plug # 1										
Fluid #	Stage Type	Fluid Name	Qty	Qty uom	Mixing Density lbm/gal	Yield ft <sup>3</sup> /sk	Mix Fluid Gal/sk	Rate bbl/min	Total Mix Fluid Gal/sk	
1	PREFLUSH			bbl	.	.0	.0	.0		
2	SCAVENGER	CMT - PREMIUM - CLASS G, 94 LB SK (100003685)	15.0	sacks	10.	8.1	53.63		53.63	
	10 %	CAL-SEAL 60, BULK (100064022)								
	10 %	SALT, BULK (100003695)								
	10 lbm	GILSONITE, BULK (100003700)								
	0.75 %	HALAD(R)-322, 50 LB (100003646)								
	0.25 %	D-AIR 3000 (101007446)								
	0.25 lbm	POLY-E-FLAKE (101216940)								
	53.632 Gal	FRESH WATER								
3	PRIMARY CEMENT	CMT - PREMIUM - CLASS G, 94 LB SK (100003685)	405.0	sacks	14.6	1.59	6.43		6.43	
	10 %	CAL-SEAL 60, BULK (100064022)								
	10 %	SALT, BULK (100003695)								
	10 lbm	GILSONITE, BULK (100003700)								
	0.75 %	HALAD(R)-322, 50 LB (100003646)								
	0.25 %	D-AIR 3000 (101007446)								
	0.25 lbm	POLY-E-FLAKE (101216940)								
	6.425 Gal	FRESH WATER								
4	DISPLACEMENT			bbl	.			.0		
5	PLUG RAT & MOUSE	CMT - PREMIUM - CLASS G, 94 LB SK (100003685)	40.0	sacks	14.6	1.59	6.43		6.43	
	10 %	CAL-SEAL 60, BULK (100064022)								
	10 %	SALT, BULK (100003695)								
	10 lbm	GILSONITE, BULK (100003700)								
	0.75 %	HALAD(R)-322, 50 LB (100003646)								
	0.25 %	D-AIR 3000 (101007446)								
	0.25 lbm	POLY-E-FLAKE (101216940)								
	6.425 Gal	FRESH WATER								

Calculated Values			Pressures			Volumes		
Displacement		Shut In: Instant		Lost Returns		Cement Slurry		Pad
Top Of Cement		5 Min		Cement Returns		Actual Displacement		Treatment
Frac Gradient		15 Min		Spacers		Load and Breakdown		Total Job

RECEIVED  
KANSAS CORPORATION COMMISSION

# Cementing Job Summary

Rates									
Circulating		Mixing		Displacement		Avg. Job			
Cement Left In Pipe	Amount	40 ft	Reason	Shoe Joint					
Frac Ring # 1 @	ID	Frac ring # 2 @	ID	Frac Ring # 3 @	ID	Frac Ring # 4 @	ID		
The Information Stated Herein Is Correct				Customer Representative Signature					

CONFIDENTIAL

RECEIVED  
KANSAS CORPORATION COMMISSION

JAN 26 2009

CONSERVATION DIVISION  
WICHITA, KS