

KANSAS CORPORATION COMMISSION
OIL & GAS CONSERVATION DIVISION
WELL PLUGGING APPLICATION
Please TYPE Form and File ONE Copy

Form CP-1
September 2003
This Form must be Typed
Form must be Signed
All blanks must be Filled

API # 15 - 067-20483 - 0000 (Identifier Number of this well). This must be listed for wells drilled since 1967; if no API # was issued,

indicate original spud or completion date 8/27/1977

Well Operator: ExxonMobil Oil Corporation KCC License #: 5208
(Owner / Company Name) (Operator's)

Address: PO Box 4358 City: Houston

State: Texas Zip Code: 77210 Contact Phone: (281) 654 - 1923

Lease: Smith-Tune Unit Well #: 2 Sec. 26 Twp. 29 S. R. 36 East West

- C - S/2 Spot Location / QQQQ County: Grant

1350 Feet (in exact footage) From North / South (from nearest outside section corner) Line of Section (Not Lease Line)

2620 Feet (in exact footage) From East / West (from nearest outside section corner) Line of Section (Not Lease Line)

Check One: Oil Well Gas Well D&A Cathodic Water Supply Well

SWD Docket # _____ ENHR Docket # _____ Other: _____

Conductor Casing Size: _____ Set at: _____ Cemented with: _____ Sacks

Surface Casing Size: 8 5/8" Set at: 620' Cemented with: 350 Sacks

Production Casing Size: 5 1/2" Set at: 2939' Cemented with: 350 Sacks

List (ALL) Perforations and Bridgeplug Sets: Open perms @ 2773' - 2814'

Elevation: 2974' (G.L. / K.B.) T.D.: 2940' PBDT: 2940' Anhydrite Depth: 1663' - 1738'
(Stone Corral Formation)

Condition of Well: Good Poor Casing Leak Junk in Hole

Proposed Method of Plugging (attach a separate page if additional space is needed): Please see attached / in accordance with the rules and regulations of the KCC

RECEIVED

JUN 11 2009

Is Well Log attached to this application as required? Yes No Is ACO-1 filed? Yes No

KCC WICHITA

If not explain why? Copy of Log not available / Log tops attached

Plugging of this Well will be done in accordance with K.S.A. 55-101 et. seq. and the Rules and Regulations of the State Corporation Commission.

List Name of Company Representative authorized to be in charge of plugging operations: Richard Lewis

Phone: (620) 544 - 5527

Address: 200 W. 4th Street City / State: Hugoton, KS 67951

Plugging Contractor: Sargent & Horton KCC License #: 31151
(Company Name) (Contractor's)

Address: Rt. 1, Box 49BA, Tyrone, KS 73951 Phone: () -

Proposed Date and Hour of Plugging (if known?): As soon as rig is available

Payment of the Plugging Fee (K.A.R. 82-3-118) will be guaranteed by Operator or Agent

Date: 6/8/09 Authorized Operator / Agent: Cellean Reda
(Signature)

Mail to: KCC - Conservation Division, 130 S. Market - Room 2078, Wichita, Kansas 67202

Dist 1
PA

PROPOSED PLUGGING PROCEDURE FOR EXXON MOBIL CORPORATION

**WELL: SMITH TUNE # 2
FIELD: PANOMA GAS AREA
COUNTY: GRANT, KS**



THIS IS A CATEGORY ?? WORKOVER.

BOPE CLASSIFICATION: ???

NOTE: SUBJECT WELL HAD STUCK TUBING 4/09. TUBING WILL NEED TO RECOVERED PRIOR TO P&A OPERATIONS. ALL PLUGGING WORK WILL BE DIRECTED BY THE KCC DISTRICT REPRESENTATIVE.

NOTE: PERFORM ALL WELL WORK OPERATIONS IN ACCORDANCE WITH THE HPO WORKOVER OPERATIONS MANUAL.

NOTE: USE CLASS 'H', 16.4 PPG, 1.06 YIELD CEMENT FOR ALL PLUGS.

NOTE: PUMP 9.5 PPG MUD LADEN FLUID BETWEEN CEMENT PLUGS.

NOTE: NOTIFY KCC DISTRICT OFFICE IN DODGE CITY, KS PRIOR TO COMMENCEMENT OF WORK & WITHIN SUFFICIENT TIME TO WITNESS PLUGGING OPERATIONS.

NOTE: ENSURE PLUGGING FORMS HAVE APPROPRIATE INFORMATION NEEDED TO FILE APPROPRIATE PAPERWORK W/ THE KCC TO CONCLUDE PLUGGING OPERATIONS.

Check pressures on all casing strings daily and document on morning reports. Discuss safe blow down/well kill procedures with Exxon Mobil Workover Supervisor.

1. INSPECT JOBSITE FOR POTENTIAL HAZARDS & LOCATION CHARACTERISTICS THAT MAY IMPACT THE PLANNED WELLWORK AND/OR REQUIRE MODIFICATION OF THE PROCEDURE. INITIATE MOC PROCESS IF NEEDED.
2. SET & TEST RIG ANCHORS AS NEEDED.
3. **PLUG WELL AS DIRECTED BY KCC DISTRICT REPRESENTATIVE.** A GENERAL PLAN IS AS FOLLOWS, BUT SHOULD BE REVISED TO ENSURE ALL FORMATIONS (INCLUDING THE CHEYENNE FORMATION, DAKOTA FORMATION, ARBUCKLE FORMATION, ANY SALT FORMATIONS & ANY FRESH & USABLE WATER ZONES) ARE ISOLATED AS PER THE SPECIFICATIONS OF THE KCC.
4. MIRU. LOAD WELL W/ FSW.
5. REMOVE TREE. INSTALL BOP'S (VERIFY BOP REQUIREMENTS) & TEST.
6. RIH W/ WORKSTRING TO 2814'.
7. CIRCULATE 9.5 PPG MUD.
8. SET 35 SX CEMENT PLUG FROM 2573' – 2814'.
9. POH W/ WORKSTRING TO 2000'. REVERSE OUT.

RECEIVED

JUN 11 2009

KCC WICHITA

10. CIRCULATE & CONDITION MUD.
11. WOC. PRESSURE TEST 5 1/2" CASING TO 500 PSI. **NOTE: IF CASING DOES NOT TEST, LOCATE CASING LEAK(S) & NOTIFY KCC REPRESENTATIVE. FOLLOW INSTRUCTIONS OF THE KCC TO ISOLATE LEAK AS NECESSARY & REVISE PROCEDURE ACCORDINGLY.**
12. LOWER WORKSTRING TO 2237'.
13. SET 20 SX CEMENT PLUG @ 2107' – 2237'.
14. POH W/ WORKSTRING TO 1700'. REVERSE OUT.
15. SET 20 SX CEMENT PLUG @ 1550' – 1700'.
16. POH W/ WORKSTRING.
17. NIPPLE UP ON 5 1/2" CASING. RU JACKS.
18. SET BOP'S W/ 5 1/2" PIPE RAMS & TEST.
19. RU WL UNIT W/ CLASS II LUBRICATOR & TEST.
20. CUT 5 1/2" CASING @ 670'. RD WL UNIT.
21. CIRCULATE & CONDITION MUD.
22. RECOVER 5 1/2" CASING.
23. CHANGE BOP RAMS TO ACCOMADATE WORKSTRING.
24. RIH W/ WORKSTRING TO 670'.
25. SET 230 SX CEMENT PLUG @ 3' – 670'.
26. POH W/ WORKSTRING.
27. REMOVE BOP'S.
28. CUT & CAP WELL 3' BELOW GROUND LEVEL.
29. RD/MO.

6/8/09

RECEIVED
JUN 11 2009
KCC WICHITA

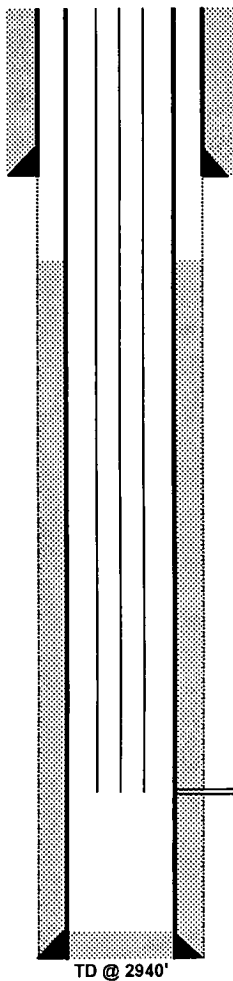
PRELIMINARY B&A SKETCH-PLUGS WILL CHANGE PER THE DIRECTIONS OF THE KCC DISTRICT REPRESENTATIVE

COMPANY: Exxon Mobil Corporation
 WELL NAME: Smith Tune
 WELL # : 2
 API# : 15-067-20483
 COUNTY: Grant

SURFACE CASING			
OD	WT / FT	GRADE	SET AT
8 5/8"			620'
PRODUCTION CASING			
OD	WT / FT	GRADE	SET AT
5 1/2"			2939'
TUBING			
OD	WT / FT	GRADE	SET AT
2 3/8"	4.7	J-55	2808'

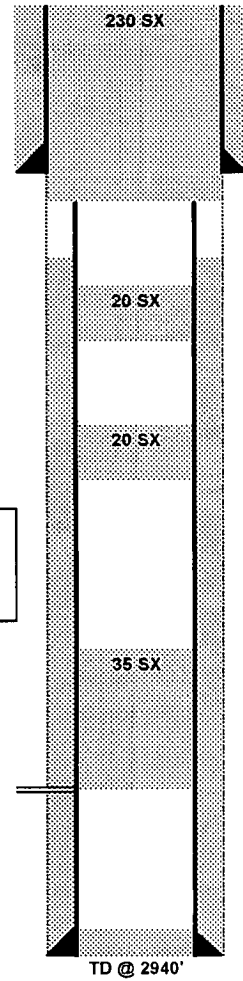
CAPACITIES (BBL/FT)	
2 3/8" TBG	0.00387
5 1/2" CSG	0.0244
2 3/8" x 5 1/2"	0.0189
8 5/8" CSG	0.0636
2 3/8" x 8 5/8"	0.0582

BEFORE



AFTER

CUT & CAP WELL @ 3' BELOW GROUND LEVEL.
 PLUG # (4) 3' - 670'



POSSIBLE CASING LEAK
 STUCK TUBING 4/09

8 5/8" OD SURFACE CSG SET @ 620'

CUT 5 1/2" CSG @ 670'

CALC TOC @ 1456'

PLUG # (3) 1550' - 1700'
 (STONE CORRAL)

PLUG # (2) 2107' - 2237'

****PLUGS WILL NEED TO BE SET ACROSS THE FOLLOWING FORMATIONS: CHEYENNE, DAKOTA, ARBUCKLE, ANY SALT ZONES, ANY FRESH WATER ZONES**

5/8" ROD FISH @ 45'
 2 3/8" TBG / MA @ 2808'

PLUG # (1) 2573' - 2814'

2773' - 2814'

5 1/2" OD PRODUCTION CSG SET @ 2939'

TD @ 2940'

TD @ 2940'

RECEIVED
 JUN 11 2009
 KCC WICHITA

KGS**Oil and Gas
Well
Database****Specific Well--15-067-20483****Oil & Gas****Tops Picked**

This page shows the tops picked for the well you have selected.

Formation (source name)	Top	Base	Source	Updated
Blaine Formation (BLAINE)	1118	1183	HUG ELOG-EM	Jul-01-2003
Cedar Hills Sandstone Formation (CDHLLS)	1234	1382	HUG ELOG-EM	Jul-01-2003
Stone Corral Formation (STNC)	1663	1738	HUG ELOG-EM	Jul-01-2003
Wellington Formation (WLNQTN)	2140		HUG ELOG-EM	Jul-01-2003
Hutchinson Salt Member (HUTCH SALT)	2237		HUG ELOG-EM	Jul-01-2003
Hollenberg Limestone Member (HLLNBR)	2437		HUG ELOG-EM	Jul-01-2003
Chase Group (CHSE GRP)	2462		HUG ELOG-EM	Jul-01-2003
Herington Limestone Member (HRNGTN)	2462		HUG ELOG-EM	Jul-01-2003
Paddock Shale Member (PADDOCK)	2476		HUG ELOG-EM	Jul-01-2003
Krider Limestone Member (KRIDER)	2484		HUG ELOG-EM	Jul-01-2003
Odell Shale Formation (ODELL)	2509		HUG ELOG-EM	Jul-01-2003
Winfield Limestone Formation (WINF)	2537		HUG ELOG-EM	Jul-01-2003
Gage Shale Member (GAGE)	2558		HUG ELOG-EM	Jul-01-2003
Towanda Limestone Member (TWND)	2595	2628	HUG ELOG-EM	Jul-01-2003
Fort Riley Limestone Member (FTRLY)	2645	2694	HUG ELOG-EM	Jul-01-2003
Florence Limestone Member (FLRNC)	2709		HUG ELOG-EM	Jul-01-2003
Matfield Shale Formation (MATFIELD)	2716		HUG ELOG-EM	Jul-01-2003
Wreford Limestone Formation				

RECEIVED
JUN 11 2009
KCC WICHITA

(WREFORD)	2738		HUG ELOG-EM	Jul-01-2003
Speiser Shale Formation (A1 SH)	2767		HUG ELOG-EM	Jul-01-2003
Council Grove Group (CGRV GRP)	2767		HUG ELOG-EM	Jul-01-2003
Funston Formation (A1 LM)	2788		HUG ELOG-EM	Jul-01-2003
Blue Rapids Shale Formation (B1 SH)	2824		HUG ELOG-EM	Jul-01-2003
Crouse Limestone Formation (B1 LM)	2838		HUG ELOG-EM	Jul-01-2003
Easily Creek Shale Formation (B2 SH)	2854		HUG ELOG-EM	Jul-01-2003
Middleburg Limestone Member (B2 LM)	2864		HUG ELOG-EM	Jul-01-2003
Hooser Shale Member (B3 SH)	2876		HUG ELOG-EM	Jul-01-2003
Eiss Limestone Member (B3 LM)	2886		HUG ELOG-EM	Jul-01-2003
Stearns Shale Formation (B4 SH)	2892		HUG ELOG-EM	Jul-01-2003
Morrill Limestone Member (B4 LM)	2904		HUG ELOG-EM	Jul-01-2003
Florena Shale Member (B5 SH)	2908		HUG ELOG-EM	Jul-01-2003
Cottonwood Limestone Member (B5 LM)	2912		HUG ELOG-EM	Jul-01-2003
Council Grove Group (CGRV)			HUG ELOG-EM	Jul-01-2003

[Back to main well page...](#)

Kansas Geological Survey, Oil and Gas Well Database

Comments to webadmin@kgs.ku.edu

URL=<http://www.kgs.ku.edu/Magellan/Qualified/index.html>

Well Display Program Updated Jan. 2008. Data added continuously.

RECEIVED

JUN 11 2009

KCC WICHITA



CORPORATION COMMISSION

Mark Parkinson, Governor Thomas E. Wright, Chairman Michael C. Moffet, Commissioner Joseph F. Harkins, Commissioner

NOTICE OF RECEIPT OF WELL PLUGGING APPLICATION (CP-1)

EXXONMOBIL OIL CORP
14950 HEATHROW FORREST PKWY
PO BOX 4358
HOUSTON, TX 77210-4358

June 17, 2009

Re: SMITH-TUNE UNIT #2
API 15-067-20483-00-00
26-29S-36W, 1350 FSL 2620 FEL
GRANT COUNTY, KANSAS

Dear Operator:

This letter is to notify you that the Conservation Division has received your plugging proposal, form CP-1, for the above well and has reviewed the proposal for completeness. The central office will now forward your CP-1 to the district office listed below for review of the proposed plugging method. **Please contact the district office for approval of your proposed plugging method at least five (5) days before plugging the well, pursuant to K.A.R. 82-3-113(b). If a workover pit will be used during the plugging of the well it must be permitted. A CDP-1 form must be filed and approved prior to the use of the pit in accordance with K.A.R. 82-3-600.**

The Conservation Division's review of form CP-1, either in the central or district office, does not include an inquiry into well ownership or the filing operator's legal right to plug the well. This notice in no way constitutes authorization to plug the above well by persons not having legal rights of ownership or interest in the well.

This notice is void after December 14, 2009. The CP-1 filing does not bring the above well into compliance with K.A.R. 82-3-111 with regard to the Commission's temporary abandonment requirements.

Sincerely,

Steve Bond
Production Department Supervisor

District: #1
210 E Frontview, Suite A
Dodge City, KS 67801
(620) 225-8888