

CONFIDENTIAL

2-1-08

ORIGINAL

**KANSAS CORPORATION COMMISSION
OIL & GAS CONSERVATION DIVISION
WELL COMPLETION FORM
WELL HISTORY - DESCRIPTION OF WELL & LEASE**

Form ACO-1
September 1999
Form Must Be Typed

Operator: License # 5447
Name: OXY USA Inc.
Address: P.O. Box 2528
City/State/Zip: Liberal, KS 67905
Purchaser: NA
Operator Contact Person: Rafael Bacigalpo
Phone: (620) 629-4200
Contractor: Name: Murfin Drilling Co., Inc.
License: 30606
Wellsite Geologist: NA
Designate Type of Completion:
 New Well Re-Entry Workover
 Oil SWD SIOW Temp. Abd.
 Gas ENHR SIGW
 Dry Other (Core, WSW, Expl, Cathodic, etc)
If Workover/Re-entry: Old Well Info as follows:
Operator: _____
Well Name: _____

API No. 15 - 081-21683-0000
County: Haskell
C - NE - SW Sec 28 Twp. 30S S. R. 33W
1980 feet from S / N (circle one) Line of Section
1980 feet from E / W (circle one) Line of Section
Footages Calculated from Nearest Outside Section Corner:
(circle one) NE SE NW SW
Lease Name: Victory Morrow Lime Unit Well #: 304
Field Name: _____
Producing Formation: NA
Elevation: Ground: 2939 Kelly Bushing: 2950
Total Depth: 5650 Plug Back Total Depth: _____
Amount of Surface Pipe Set and Cemented at 1829 feet
Multiple Stage Cementing Collar Used? Yes No
If yes, show depth set _____
If Alternate II completion, cement circulated from _____
feet depth to _____ w/ _____ sx cmt.

**KCC
FEB 01 2007
CONFIDENTIAL**

Original Comp. Date: _____ Original Total Depth: _____
 Deepening Re-perf. Conv. To Enhr./SWD
 Plug Back Plug Back Total Depth
 Commingled Docket No. _____
 Dual Completion Docket No. _____
 Other (SWD or Enhr.?) Docket No. _____
10/18/06 10/27/06 10/27/06
Spud Date or Recompletion Date Date Reached TD Completion Date or Recompletion Date

Drilling Fluid Management Plan PA N H 9-22-08
(Data must be collected from the Reserve Pit)
Chloride content 1400 mg/l ppm Fluid volume 1500 bbls
Dewatering method used Evaporation
Location of fluid disposal if hauled offsite:
Operator Name: _____
Lease Name: _____ License No.: _____
Quarter _____ Sec. _____ Twp, _____ S. R. East West
County: _____ Docket No.: _____

INSTRUCTIONS: An original and two copies of this form shall be filed with the Kansas Corporation Commission, 130 S. Market - Room 2078, Wichita, Kansas 6702, within 120 days of the spud date, recompletion, workover or conversion of a well. Rule 82-3-130, 82-3-106 and 82-3-107 apply. Information of side two of this form will be held confidential for a period of 12 months if requested in writing and submitted with the form (see rule 82-3-107 for confidentiality in excess of 12 months). One copy of all wireline logs and geologist well report shall be attached with this form. ALL CEMENTING TICKETS MUST BE ATTACHED. Submit CP-4 form with all plugged wells. Submit CP-111 form with all temporarily abandoned wells.

All requirements of the statutes, rules and regulations promulgated to regulate the oil and gas industry have been fully complied with and the statements herein are complete and correct to the best of my knowledge.

Signature: [Signature]
Title: Capital Project Date 02/01/2007
Subscribed and sworn to before me this 1st day of Feb.
20 07
Notary Public: Anita Peterson
Date Commission Expires: Oct. 1 2009

ANITA PETERSON
Notary Public - State of Kansas
My Appt. Expires October 1, 2009

KCC Office Use Only
Y Letter of Confidentiality Attached
If Denied, Yes Date: _____
____ Wireline Log Received
____ Geologist Report Received
____ UIC Distribution
**RECEIVED
KANSAS CORPORATION COMMISSION**

FEB 07 2007

**CONSERVATION DIVISION
WICHITA, KS**

Operator Name: OXY USA Inc. Lease Name: Victory Morrow Lime Unit Well #: 2

Sec. 28 Twp. 30 S. R. 33W East West County: Haskell

Instructions: Show important tops and base of formations penetrated. Detail all cores. Report all final copies of drill stems tests giving interval tested, time tool open and closed, flowing and shut-in pressures, whether shut-in pressure reached static level, hydrostatic pressures, bottom hole temperature, fluid recovery, and flow rates if gas to surface test, along with final chart(s). Attach extra sheet if more space is needed. Attach copy of all Electric Wireline Logs surveyed. Attach final geological well site report.

Drill Stem Tests Taken <input type="checkbox"/> Yes <input checked="" type="checkbox"/> No <i>(Attach Additional Sheets)</i> Samples Sent to Geological Survey <input type="checkbox"/> Yes <input checked="" type="checkbox"/> No Cores Taken <input type="checkbox"/> Yes <input checked="" type="checkbox"/> No Electric Log Run <input checked="" type="checkbox"/> Yes <input type="checkbox"/> No <i>(Submit Copy)</i> List All E. Logs Run: Annular Hole Volume Plot Microlog Array Sonic Spectral Density Dual Spaced Neutron Array Compensated Resistivity	<input checked="" type="checkbox"/> Log Formation (Top), Depth and Datum <input type="checkbox"/> Sample <table style="width:100%; border-collapse: collapse;"> <tr> <td style="width:60%;">Name</td> <td style="width:20%;">Top</td> <td style="width:20%;">Datum</td> </tr> <tr> <td>Chase</td> <td>2712</td> <td>238</td> </tr> <tr> <td>Council Grove</td> <td>2934</td> <td>16</td> </tr> <tr> <td>Heebner</td> <td>4085</td> <td>-1135</td> </tr> <tr> <td>Toronto</td> <td>4108</td> <td>-1158</td> </tr> <tr> <td>Lansing</td> <td>4152</td> <td>-1202</td> </tr> <tr> <td>Marmaton</td> <td>4788</td> <td>-1838</td> </tr> <tr> <td>Cherokee</td> <td>4956</td> <td>-2006</td> </tr> </table> (See Side Three)	Name	Top	Datum	Chase	2712	238	Council Grove	2934	16	Heebner	4085	-1135	Toronto	4108	-1158	Lansing	4152	-1202	Marmaton	4788	-1838	Cherokee	4956	-2006
Name	Top	Datum																							
Chase	2712	238																							
Council Grove	2934	16																							
Heebner	4085	-1135																							
Toronto	4108	-1158																							
Lansing	4152	-1202																							
Marmaton	4788	-1838																							
Cherokee	4956	-2006																							

CASING RECORD <input checked="" type="checkbox"/> New <input type="checkbox"/> Used							
Report all strings set-conductor, surface, intermediate, production, etc.							
Purpose of String	Size Hole Drilled	Size Casing Set (in. O.D.)	Weight Lbs./ft.	Setting Depth	Type of Cement	# Sacks Used	Type and Percent Additives
Conductor					C		
Surface	12 1/4	8 5/8	24	1829	C	145	15/85 Poz C + Additives
					C	500	35/65 Pos C + Additives
Production					C	195	Class C + Additives

ADDITIONAL CEMENTING / SQUEEZE RECORD

Purpose:	Depth Top Bottom	Type of Cement	#Sacks Used	Type and Percent Additives
<input type="checkbox"/> Perforate				
<input type="checkbox"/> Protect Casing				
<input type="checkbox"/> Plug Back TD				
<input type="checkbox"/> Plug off Zone				

Shots Per Foot	PERFORATION RECORD - Bridge Plugs Set/type Specify Footage of Each Interval Perforated	Acid, Fracture, Shot, Cement Squeeze Record (Amount and Kind of Material Used)	Depth
	100 sxs @ 3100'		
	50 sxs @ 1860'		
	40 sxs @ 800'		
	20 sxs @ 60'		

TUBING RECORD	Size	Set At	Packer At	Liner Run <input type="checkbox"/> Yes <input checked="" type="checkbox"/> No
---------------	------	--------	-----------	--

Date of First, Resumed Production, SWD or Enhr.	Producing Method <input type="checkbox"/> Flowing <input type="checkbox"/> Pumping <input type="checkbox"/> Gas Lift <input checked="" type="checkbox"/> Other (Explain) P&A
---	---

Estimated Production Per 24 Hours	Oil BBLS	Gas Mcf	Water Bbls	Gas-Oil Ratio	Gravity
-----------------------------------	----------	---------	------------	---------------	---------

Disposition of Gas	METHOD OF COMPLETION	Production Interval
<input type="checkbox"/> Vented <input type="checkbox"/> Sold <input type="checkbox"/> Used on Lease (If vented, Submit ACO-18)	<input type="checkbox"/> Open Hole <input type="checkbox"/> Perf. <input type="checkbox"/> Dually Comp. <input type="checkbox"/> Commingled <input checked="" type="checkbox"/> Other (Specify) _____ P&A	_____

Side Three

Operator Name: OXY USA Inc. Lease Name: Victory Morrow Lime Unit Well #: 304

Sec. 28 Twp. 30 S. R. 33W East West County: Haskell

<u>Name</u>	<u>Top</u>	<u>Datum</u>
Morrow	5252	-2302
St Genevieve	5421	-2471
St Louis	5494	-2544
TD	5650	

KCC
FEB 01 2007
CONFIDENTIAL



Cementing Service Report FEB 01 2007

KCC

CONFIDENTIAL

Customer: OXY RESOURCE CALIFORNIA LLC
 Job Number: 2205552243

Well: VICTORY MORROW LIME UNIT 304		Location (legal): SEC 28-T30S-R33W		Schlumberger Location: Perryton, TX		Job Start: 2006-Oct-27			
Field: VICTORY		Formation Name/Type:		Deviation: °	Bit Size: 7.88 in	Well MD: 3,132 ft	Well TVD: 3,132 ft		
County: HASKELL		State/Province: KANSAS		BHP: psi	BHST: 111 °F	BHCT: 89 °F	Pore Press. Gradient: psi/ft		
Well Master: 0630854394		API / UWI: 15081216830000		Casing/Liner					
Rig Name: MURFIN 20	Drilled For: Oil & Gas	Service Via: Land	Depth, ft:	Size, in:	Weight, lb/ft:	Grade:	Thread:		
Offshore Zone:	Well Class: New	Well Type: Development	Tubing/Drill Pipe						
Drilling Fluid Type: Bentonite		Max. Density: 9 lb/gal	Plastic Viscosity: 20 cp	Depth:	Size, in:	Weight, lb/ft:	Grade:	Thread:	
Service Line: Cementing		Job Type: BlkSqz Rpr Prod. Casing		Perforations/Open Hole					
Max. Allowed Tubing Pressure: 1500 psi	Max. Allowed Ann. Pressure: psi	Wellhead Connection: 4 1/2" XH DP pin	Top, ft:	Bottom, ft:	spf:	No. of Shots:	Total Interval: ft		
Service Instructions: CEMENT ABANDONMENT PLUGS USING 275 SKS 40/60 POZ H + 6%D20 + 0.2%D46 100 sks @3132 ft, 50 sks @ 1860 ft, 40 sks @800 ft, 20 sks @60 ft 25 sks for mouse and rat holes			Treat Down Casing:	Displacement: bbl	Packer Type:	Packer Depth: ft	Diameter: in		
Casing/Tubing Secured <input checked="" type="checkbox"/>	1 Hole Volume Circulated prior to Cementing <input checked="" type="checkbox"/>	Tubing Vol.: 34 bbl	Casing Vol.: bbl	Annular Vol.: bbl	OpenHole Vol.: 187 bbl				
Lift Pressure: psi		Pipe Rotated <input type="checkbox"/>		Pipe Reciprocated <input type="checkbox"/>		Casing Tools		Squeeze Job	
No. Centralizers: Top Plugs: 1 Bottom Plugs:		Cement Head Type: Single		Job Scheduled For: 2006-Oct-28 0:00		Arrived on Location: 0:00		Leave Location:	
Shoe Type:		Shoe Depth: 3132 ft		Stage Tool Type:		Stage Tool Depth: ft		Collar Type:	
Collar Depth: ft		Squeeze Type:		Tool Type:		Tool Depth: ft		Tail Pipe Size: in	
Collar Depth: ft		Tail Pipe Depth: ft		Collar Depth: ft		Sqz Total Vol: bbl			

Date	Time	CMT TREAT PRES	CMT DENS	CMT RATE	CMT VOL	CMT NRD RATE	CMT NRD VOL	0	Message
	24 hr clock	psi	lb/gal	bbf/min	bbl	bbf/min	bbl	0	
2006-Oct-28	1:55	0	8.34	0.0	0.0	0.0	0.0	0	
2006-Oct-28	1:55								Start Job
2006-Oct-28	1:55	0	8.34	0.0	0.0	0.0	0.0	0	
2006-Oct-28	1:55								Pressure Test Lines
2006-Oct-28	1:55	0	8.34	0.0	0.0	0.0	0.0	0	
2006-Oct-28	1:56	0	8.34	0.0	0.0	0.0	0.0	0	
2006-Oct-28	1:57	5	8.34	0.0	0.0	0.0	0.0	0	
2006-Oct-28	1:58	5	8.34	0.0	0.0	0.0	0.0	0	
2006-Oct-28	1:59	0	8.35	0.0	0.0	1.7	2.6	0	
2006-Oct-28	2:00	2289	8.34	0.0	0.0	0.1	2.7	0	
2006-Oct-28	2:01	2129	8.34	0.0	0.0	0.0	2.9	0	
2006-Oct-28	2:01	2119	8.34	0.0	0.0	0.0	0.0	0	
2006-Oct-28	2:01								start water ahead
2006-Oct-28	2:02	2110	8.34	0.0	0.0	0.0	0.0	0	
2006-Oct-28	2:03	9	8.34	0.0	0.0	0.0	0.0	0	
2006-Oct-28	2:04	201	8.31	3.4	2.5	3.5	4.8	0	
2006-Oct-28	2:05	220	8.60	4.0	6.4	4.0	12.5	0	
2006-Oct-28	2:05								Reset Total, Vol = 6.49 bbl
2006-Oct-28	2:05	211	8.90	4.0	6.5	4.0	12.8	0	
2006-Oct-28	2:05								Start Cement
2006-Oct-28	2:05	215	9.66	4.0	0.3	4.0	0.7	0	
2006-Oct-28	2:06	233	13.23	4.0	3.8	3.9	7.6	0	

FEB 07 2007

RECEIVED KANSAS CORPORATION COMMISSION

Well		Field			Service Date		Customer		Job Number
VICTORY MORROW LIME UNIT #304		VICTORY			06300-Oct-27		OXY RESOURCE CALIFORNIA LLC		2205552243
Date	Time	CMT TREAT PRES	CMT DENS	CMT RATE	CMT VOL	CMT NRD RATE	CMT NRD VOL	0	Message
	24 hr clock	psi	lb/gal	bbl/min	bbl	bbl/min	bbl	0	
2006-Oct-28	2:07	146	12.67	4.0	7.8	4.0	15.5	0	KCC FEB 01 2007 CONFIDENTIAL
2006-Oct-28	2:08	101	13.53	4.0	11.8	4.0	23.4	0	
2006-Oct-28	2:09	87	13.13	4.0	15.7	4.0	31.3	0	
2006-Oct-28	2:10	87	13.21	4.0	19.4	3.9	38.8	0	
2006-Oct-28	2:11	73	13.13	3.7	23.2	3.7	46.2	0	
2006-Oct-28	2:12	46	13.37	2.5	26.6	2.6	53.3	0	
2006-Oct-28	2:12								Reset Total, Vol = 28.52 bbl
2006-Oct-28	2:12	14	12.64	1.8	28.5	2.0	57.3	0	
2006-Oct-28	2:13	5	9.22	0.7	0.0	1.5	0.1	0	
2006-Oct-28	2:13								End Cement Slurry
2006-Oct-28	2:13								water behind
2006-Oct-28	2:13	14	11.97	0.0	0.0	0.0	0.4	0	
2006-Oct-28	2:13	9	12.71	0.5	0.1	0.0	0.4	0	
2006-Oct-28	2:14	5	8.09	0.0	0.6	0.0	3.8	0	
2006-Oct-28	2:14								Reset Total, Vol = 2 bbl by NRD
2006-Oct-28	2:14	5	8.14	0.0	0.0	0.0	0.0	0	
2006-Oct-28	2:14	0	0.61	0.0	0.0	7.1	1.1	0	
2006-Oct-28	2:14								Start Displacement
2006-Oct-28	2:15	0	10.20	0.0	0.0	0.0	11.3	0	
2006-Oct-28	2:16	0	0.20	0.0	0.0	8.3	12.5	0	
2006-Oct-28	2:17	27	8.83	2.8	0.4	2.9	32.7	0	
2006-Oct-28	2:17								Reset Total, Vol = 0.99 bbl
2006-Oct-28	2:17	60	8.68	4.0	1.0	3.8	33.8	0	
2006-Oct-28	2:18	82	8.99	2.9	3.4	3.4	7.6	0	RECEIVED KANSAS CORPORATION COMMISSION FEB 07 2007 CONSERVATION DIVISION WICHITA, KS
2006-Oct-28	2:19	238	9.03	6.6	9.9	6.7	20.5	0	
2006-Oct-28	2:20	233	9.06	6.6	16.6	6.7	33.8	0	
2006-Oct-28	2:21	229	9.10	6.6	23.2	6.7	47.1	0	
2006-Oct-28	2:22	64	9.09	0.0	28.9	0.0	59.0	0	
2006-Oct-28	2:23	18	9.08	0.0	28.9	0.0	59.0	0	
2006-Oct-28	2:24								Reset Total, Vol = 28.89 bbl
2006-Oct-28	3:05	5	8.88	0.0	0.0	0.0	2.9	0	
2006-Oct-28	3:05								Start 2nd plug
2006-Oct-28	3:06	5	8.88	0.0	0.0	0.0	2.9	0	
2006-Oct-28	3:06								water ahead
2006-Oct-28	3:06	5	8.88	0.0	0.0	0.0	0.0	0	
2006-Oct-28	3:07	5	8.88	0.0	0.0	0.0	0.0	0	
2006-Oct-28	3:08	64	8.67	4.0	1.2	4.0	2.3	0	
2006-Oct-28	3:09	105	8.38	4.0	5.1	4.1	10.3	0	
2006-Oct-28	3:09								Reset Total, Vol = 6.65 bbl
2006-Oct-28	3:09	119	8.76	4.0	6.7	4.1	13.4	0	
2006-Oct-28	3:10	165	12.50	4.0	2.4	4.0	4.9	0	
2006-Oct-28	3:11	101	13.46	4.0	6.4	4.0	12.8	0	
2006-Oct-28	3:12	87	12.75	4.0	10.4	3.9	20.7	0	
2006-Oct-28	3:13								Start cement slurry
2006-Oct-28	3:13	9	12.60	1.0	12.2	1.4	26.1	0	
2006-Oct-28	3:13								Reset Total, Vol = 12.24 bbl
2006-Oct-28	3:13	9	12.50	0.9	12.2	1.2	26.1	0	
2006-Oct-28	3:13	5	11.70	0.0	0.0	0.8	0.1	0	
2006-Oct-28	3:13	9	3.95	0.0	0.0	2.7	0.5	0	
2006-Oct-28	3:13								water behind
2006-Oct-28	3:14	32	8.65	2.0	1.4	3.1	3.8	0	
2006-Oct-28	3:14								Reset Total, Vol = 1.81 bbl
2006-Oct-28	3:14	5	8.43	0.5	1.8	1.3	5.4	0	
2006-Oct-28	3:14								Start Displacement

Well		Field			Service Date		Customer		Job Number
VICTORY MORROW LIME UNIT #304		VICTORY			06300-Oct-27		OXY RESOURCE CALIFORNIA LLC		2205552243
Date	Time	CMT TREAT PRES	CMT DENS	CMT RATE	CMT VOL	CMT NRD RATE	CMT NRD VOL	0	Message
	24 hr clock	psi	lb/gal	bbl/min	bbl	bbl/min	bbl	0	
2006-Oct-28	3:14	0	0.39	0.0	0.0	10.9	2.8	0	
2006-Oct-28	3:15	0	0.31	0.0	0.0	12.0	12.3	0	
2006-Oct-28	3:16	9	8.66	0.2	0.0	1.2	31.2	0	
2006-Oct-28	3:17	64	8.98	3.9	2.9	4.0	38.0	0	
2006-Oct-28	3:18	60	9.04	4.0	6.9	4.0	46.1	0	
2006-Oct-28	3:19	142	9.12	4.0	10.9	4.0	54.1	0	
2006-Oct-28	3:20	151	9.12	4.0	14.9	4.0	62.2	0	
2006-Oct-28	3:21	60	9.12	0.0	17.4	0.1	67.7	0	
2006-Oct-28	3:21								Reset Total, Vol = 17.44 bbl
2006-Oct-28	3:59	5	7.34	0.0	0.1	0.0	0.4	0	
2006-Oct-28	3:59								3d plug
2006-Oct-28	3:59	5	8.34	0.0	0.1	0.0	0.4	0	
2006-Oct-28	3:59								water ahead
2006-Oct-28	4:00	96	8.31	4.0	0.7	4.0	3.5	0	
2006-Oct-28	4:01	110	8.28	4.0	4.6	4.0	11.5	0	
2006-Oct-28	4:01								Reset Total, Vol = 5.17 bbl
2006-Oct-28	4:01	119	8.73	4.0	5.2	4.0	12.6	0	
2006-Oct-28	4:01								Start Cement Slurry
2006-Oct-28	4:01	124	10.84	4.0	1.1	3.9	2.1	0	
2006-Oct-28	4:02	156	13.30	4.0	3.4	4.0	6.9	0	
2006-Oct-28	4:03	101	13.32	4.0	7.4	4.0	14.8	0	
2006-Oct-28	4:04	46	13.00	2.7	10.9	2.8	22.0	0	
2006-Oct-28	4:04								Reset Total, Vol = 12.07 bbl
2006-Oct-28	4:04	9	6.51	0.7	12.1	1.9	24.4	0	
2006-Oct-28	4:04	9	12.10	0.0	0.0	0.4	0.3	0	
2006-Oct-28	4:04								water behind
2006-Oct-28	4:05	9	9.05	0.0	0.0	0.0	0.5	0	
2006-Oct-28	4:06	0	8.72	1.3	0.6	2.2	4.4	0	
2006-Oct-28	4:06								Reset Total, Vol = 2 bbl by NRD
2006-Oct-28	4:06	-5	8.65	1.4	0.6	1.3	4.5	0	
2006-Oct-28	4:06								Start Displacement
2006-Oct-28	4:06	0	8.79	0.0	0.0	0.0	0.0	0	
2006-Oct-28	4:07	27	8.71	1.9	0.9	3.1	2.6	0	
2006-Oct-28	4:08	27	9.02	2.7	3.5	2.8	8.3	0	
2006-Oct-28	4:09	5	8.96	0.0	4.1	0.0	9.6	0	
2006-Oct-28	4:09								Reset Total, Vol = 4.07 bbl
2006-Oct-28	4:09	0	8.96	0.0	4.1	0.0	9.6	0	
2006-Oct-28	4:09								End Displacement
2006-Oct-28	4:09	0	8.96	0.0	0.0	0.0	0.0	0	
2006-Oct-28	5:14								4th plug
2006-Oct-28	5:14	5	6.54	0.0	0.0	0.0	0.1	0	
2006-Oct-28	5:15	5	8.19	0.0	0.0	5.3	4.1	0	
2006-Oct-28	5:16	5	8.16	0.0	0.0	5.3	14.8	0	
2006-Oct-28	5:17	5	12.12	0.0	0.0	5.2	24.8	0	
2006-Oct-28	5:18	69	13.61	3.4	0.9	3.2	34.2	0	
2006-Oct-28	5:19	60	13.65	3.4	4.3	3.4	41.0	0	
2006-Oct-28	5:20	41	13.43	2.3	6.9	2.5	46.6	0	
2006-Oct-28	5:21	27	9.57	0.0	7.1	2.5	50.0	0	
2006-Oct-28	5:22	9	9.54	0.0	7.1	0.0	50.6	0	
2006-Oct-28	5:22								Reset Total, Vol = 7.08 bbl
2006-Oct-28	5:22	5	9.56	0.0	7.1	0.0	50.6	0	
2006-Oct-28	5:23	5	9.56	0.0	0.0	0.1	0.0	0	
2006-Oct-28	5:23								Fill up rat and mouse hole
2006-Oct-28	5:23	5	9.49	0.0	0.0	0.2	0.1	0	

KCC

FEB 01 2007

CONFIDENTIAL

**RECEIVED
KANSAS CORPORATION COMMISSION**

FEB 07 2007

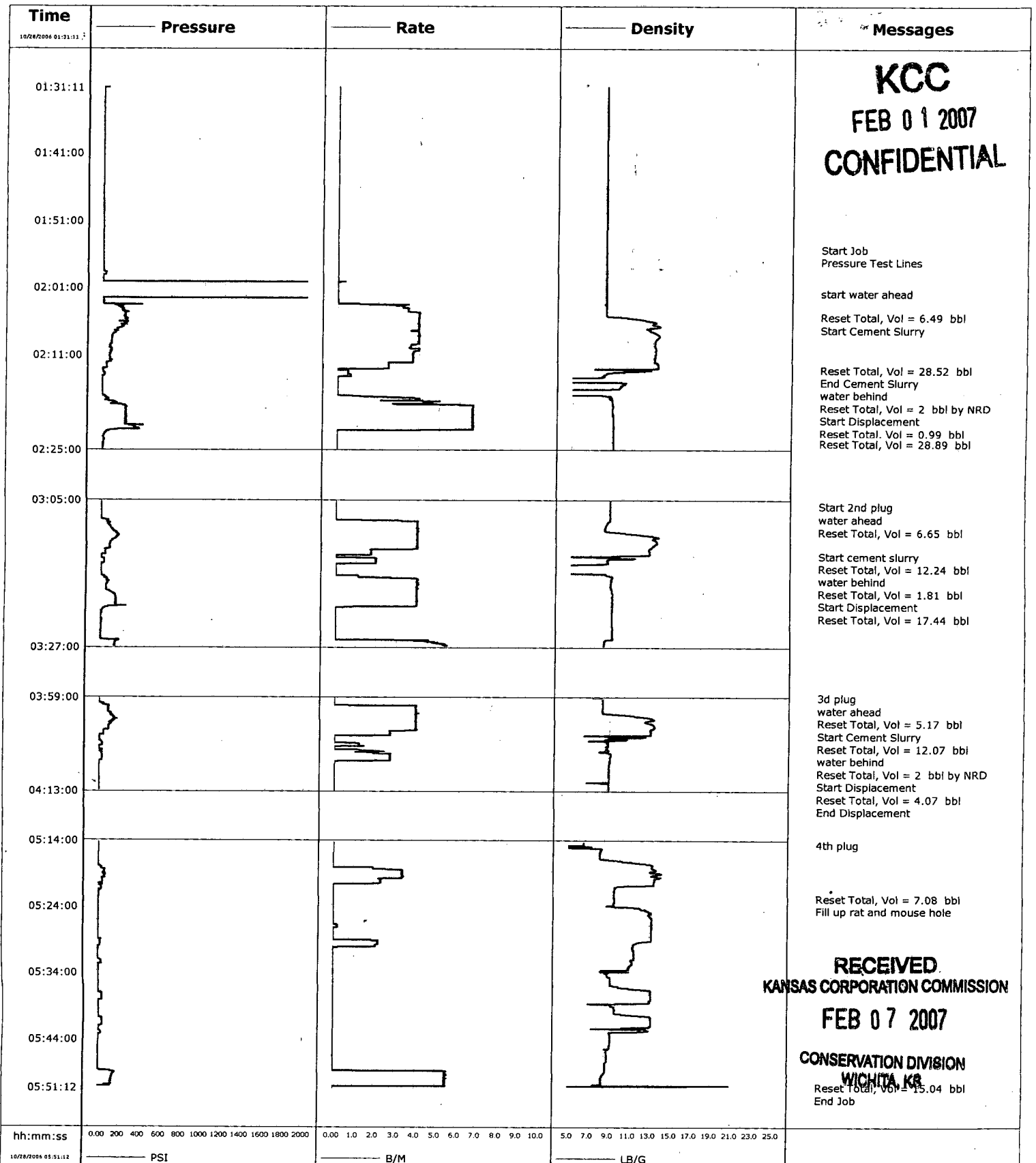
**CONSERVATION DIVISION
WICHITA, KS**

Well		Field			Service Date		Customer		Job Number	
VICTORY MORROW LIME UNIT #304		VICTORY			06300-Oct-27		OXY RESOURCE CALIFORNIA LLC		2205552243	
Date	Time	CMT TREAT PRES	CMT DENS	CMT RATE	CMT VOL	CMT NRD RATE	CMT NRD VOL	0	Message	
	24 hr clock	psi	lb/gal	bbl/min	bbl	bbl/min	bbl	0		
2006-Oct-28	5:24	5	12.57	0.0	0.0	4.6	5.8	0		
2006-Oct-28	5:25	5	13.02	0.0	0.0	5.0	15.4	0		
2006-Oct-28	5:26	5	13.20	0.0	0.0	5.0	25.4	0		
2006-Oct-28	5:27	5	13.17	0.0	0.1	4.9	35.4	0		
2006-Oct-28	5:28	5	13.16	0.0	0.1	4.9	45.3	0		
2006-Oct-28	5:29	23	11.79	2.2	1.0	1.9	53.3	0		
2006-Oct-28	5:30	9	11.46	0.0	2.3	0.0	55.6	0		
2006-Oct-28	5:31	5	11.53	0.0	2.3	0.0	55.6	0		
2006-Oct-28	5:32	37	11.31	0.0	2.3	2.4	57.4	0		
2006-Oct-28	5:33	9	10.94	0.0	2.3	0.0	58.7	0		
2006-Oct-28	5:34	5	8.92	0.0	2.3	4.9	67.5	0		
2006-Oct-28	5:35	5	9.18	0.0	2.3	4.6	76.7	0		
2006-Oct-28	5:36	5	12.22	0.0	2.3	5.2	86.0	0		
2006-Oct-28	5:37	37	13.17	0.0	2.3	2.2	94.7	0		
2006-Oct-28	5:38	5	13.02	0.0	2.3	0.0	97.7	0		
2006-Oct-28	5:39	5	9.60	0.0	2.3	4.5	105.7	0		
2006-Oct-28	5:40	5	12.59	0.0	2.3	5.1	114.9	0		
2006-Oct-28	5:41	37	13.18	0.0	2.3	2.1	120.4	0		
2006-Oct-28	5:42	5	12.63	0.0	2.3	0.0	122.7	0		
2006-Oct-28	5:43	5	9.21	0.0	2.3	0.0	124.3	0		
2006-Oct-28	5:44	5	9.19	0.0	2.3	0.0	124.3	0		
2006-Oct-28	5:45	5	8.83	0.0	2.3	5.3	125.5	0		
2006-Oct-28	5:46	5	8.84	0.0	2.3	5.2	136.0	0		
2006-Oct-28	5:47	5	8.73	0.0	2.3	5.8	146.8	0		
2006-Oct-28	5:48	5	8.73	0.0	2.3	5.8	158.3	0		
2006-Oct-28	5:49	146	8.42	5.5	6.8	10.7	177.7	0		
2006-Oct-28	5:50	128	8.31	5.5	12.3	10.9	198.9	0		
2006-Oct-28	5:51								Reset Total, Vol = 15.04 bbl	
2006-Oct-28	5:51	-3799	-6.25	0.0	15.0	0.0	205.0	0		
2006-Oct-28	5:51	-3799	-6.25	0.0	15.0	0.0	205.0	0		
2006-Oct-28	5:51								End Job	

Post Job Summary									
Average Pump Rates, bpm					Volume of Fluid Injected, bbl				
Slurry	N2	Mud	Maximum Rate	Total Slurry	Mud	Spacer	N2		
4			6	74					
Treating Pressure Summary, psi					Breakdown Fluid				
Maximum	Final	Average	Bump Plug to	Breakdown	Volume	Density			
150		80			bbl	lb/gal			
Avg. N2 Percent	Designed Slurry Volume	Displacement	Mix Water Temp	<input checked="" type="checkbox"/> Cement Circulated to Surface?		Volume			
%	82 bbl	bbl	60 °F	<input type="checkbox"/> Washed Thru Perfs To		ft	1	bbl	
Customer or Authorized Representative			Schlumberger Supervisor			<input type="checkbox"/> CirculationLost <input checked="" type="checkbox"/> Job Completed			
Bevans, Ron			Grigoriev, Valeriy						

RECEIVED
KANSAS CORPORATION COMMISSION
FEB 07 2007
CONSERVATION DIVISION
WICHITA, KS

Well	VMLU 304	Client	Oxy
Field		SIR No.	2205552243
Engineer	Val Grigoriev	Job Type	PA
Country	United States	Job Date	10-28-2006





Cementing Service Report

KCC
FEB 01 2007

Customer: OXY RESOURCE CALIFORNIA LLC
 Job Number: 2205552318
CONFIDENTIAL

Well: VICTORY MORROW LIME UNIT 304		Location (legal): SEC 28-T30S-R33W		Schlumberger Location: Perryton, TX		Job Start: 2006-Oct-20									
Field: VICTORY		Formation Name/Type:		Deviation: °		Bit Size: 12.3 in		Well MD: 1,830 ft		Well TVD: 1,830 ft					
County: HASKELL		State/Province: KANSAS		BHP: psi		BHST: 98 °F		BHCT: 85 °F		Pore Press. Gradient: psi/ft					
Well Master: 0630854394		API / UWI: 15081216830000		Casing/Liner											
Rig Name: MURFIN 20		Drilled For: Oil & Gas		Service Via: Land		Depth, ft: 1834		Size, in: 8.63		Weight, lb/ft: 24		Grade:		Thread: 8RD	
Offshore Zone:		Well Class: New		Well Type: Development		Tubing/Drill Pipe									
Drilling Fluid Type: Bentonite		Max. Density: 9.2 lb/gal		Plastic Viscosity: 20 cp		Depth:		Size, in:		Weight, lb/ft:		Grade:		Thread:	
Service Line: Cementing		Job Type: Cem Surface Casing		Perforations/Open Hole											
Max. Allowed Tubing Pressure: 1500 psi		Max. Allowed Ann. Pressure: psi		Wellhead Connection: 8 5/8" H&SM		Top, ft:		Bottom, ft:		spf:		No. of Shots:		Total Interval: ft	
Service Instructions:		CEMENT 8 5/8" SURFACE CASING WITH:		10 BBL FRESH WATER		145 15/85 Poz:C+8%D20+2%S1+0.125 pps D130		500 SK 35:65 POZ C + 6% D020 + 2% S001 + 0.25 pps D130		195 SK CLASS C + 2% S001 + 0.125 pps D130		DISPLACE WITH FRESH WATER		Diameter: in	
Casing/Tubing Secured <input checked="" type="checkbox"/>		1 Hole Volume Circulated prior to Cementing <input checked="" type="checkbox"/>		Casing Tools				Squeeze Job							
Lift Pressure: 680 psi		Pipe Rotated <input type="checkbox"/>		Pipe Reciprocated <input type="checkbox"/>		Shoe Type: Guide		Shoe Depth: 1834 ft		Squeeze Type:		Tool Type:		Tool Depth: ft	
No. Centralizers: 9		Top Plugs: 1		Bottom Plugs: 0		Stage Tool Type:		Stage Tool Depth: ft		Tail Pipe Size: in		Collar Type: Float		Collar Depth: 1790 ft	
Cement Head Type: Single		Job Scheduled For: 2006-Oct-19 21:30		Arrived on Location: 2006-Oct-20 2:30		Leave Location: 2006-Oct-20 2:30		Collar Depth: 1790 ft		Sqz Total Vol: bbl					

Date	Time	CMT TREAT PRES 24 hr clock psi	CMT DENS lb/gal	CMT RATE bbl/min	CMT VOL bbl	CMT TPLX RATE bbl/min	CMT TPLX VOL bbl	0	0	Message
2006-Oct-19	23:55	0	8.33	0.0	0.0	0.0	0.0	0	0	
2006-Oct-19	23:55	0	8.33	0.0	0.0	0.0	0.0	0	0	
2006-Oct-19	23:55									Start Job
2006-Oct-19	23:55	0	8.33	0.0	0.0	0.0	0.0	0	0	
2006-Oct-19	23:55									Pressure Test Lines
2006-Oct-19	23:55	0	8.33	0.0	0.0	0.0	0.0	0	0	
2006-Oct-19	23:56	0	8.33	0.0	0.0	0.0	0.0	0	0	
2006-Oct-19	23:56									Start Pumping Wash
2006-Oct-19	23:56	0	8.33	0.0	0.0	0.0	0.0	0	0	
2006-Oct-19	23:56	0	8.33	0.0	0.0	0.0	0.0	0	0	
2006-Oct-19	23:57	0	8.33	0.0	0.0	0.0	0.0	0	0	
2006-Oct-19	23:57	0	8.33	0.0	0.0	0.0	0.0	0	0	
2006-Oct-19	23:58	0	8.33	0.0	0.0	0.0	0.0	0	0	
2006-Oct-19	23:58	0	8.33	0.0	0.0	0.0	0.0	0	0	
2006-Oct-19	23:59	0	8.33	0.0	0.0	0.0	0.0	0	0	
2006-Oct-19	23:59	0	8.33	0.0	0.0	0.0	0.0	0	0	
2006-Oct-20	0:00	0	8.32	0.0	0.0	0.0	0.0	0	0	
2006-Oct-20	0:00	73	8.32	4.6	0.6	0.0	0.0	0	0	
2006-Oct-20	0:01	23	8.31	0.4	2.2	0.0	0.0	0	0	
2006-Oct-20	0:01	174	8.32	0.0	2.2	0.0	0.0	0	0	
2006-Oct-20	0:02	3337	8.31	0.0	2.3	0.0	0.0	0	0	
2006-Oct-20	0:02	3255	8.31	0.0	2.3	0.0	0.0	0	0	

RECEIVED
KANSAS CORPORATION COMMISSION
FEB 07 2007
CONSERVATION DIVISION
WICHITA, KS

Well		Field			Service Date		Customer		Job Number
VICTORY MORROW LIME UNIT #304		VICTORY			06293-Oct-20		OXY RESOURCE CALIFORNIA LLC		2205552318
Date	Time	CMT TREAT PRES	CMT DENS	CMT RATE	CMT VOL	CMT TPLX RATE	CMT TPLX VOL	0	Message
	24 hr clock	psi	lb/gal	bbl/min	bbl	bbl/min	bbl	0	
2006-Oct-20	0:03	3204	8.32	0.0	2.3	0.0	0.0	0	
2006-Oct-20	0:03	5	8.32	0.0	2.3	0.0	0.0	0	
2006-Oct-20	0:04	60	8.31	3.5	3.4	0.0	0.0	0	
2006-Oct-20	0:04	165	8.31	5.4	5.2	5.6	1.5	0	
2006-Oct-20	0:05	179	7.95	6.3	8.2	6.0	4.4	0	
2006-Oct-20	0:05	188	8.16	6.1	11.8	5.9	7.3	0	
2006-Oct-20	0:06	188	8.49	6.3	12.9	6.0	8.4	0	
2006-Oct-20	0:06								Reset Total, Vol = 12.89 bbl
2006-Oct-20	0:06								End Wash
2006-Oct-20	0:06	192	8.64	6.3	0.2	6.0	0.2	0	
2006-Oct-20	0:06	188	8.79	6.3	0.4	6.0	0.4	0	
2006-Oct-20	0:06								Start Mixing Lead Slurry
2006-Oct-20	0:06	211	9.63	6.3	2.0	6.1	1.9	0	
2006-Oct-20	0:06	211	10.84	6.1	5.1	5.9	4.9	0	
2006-Oct-20	0:07	233	11.72	6.2	8.2	5.9	7.9	0	
2006-Oct-20	0:07	229	12.23	6.2	11.3	5.9	10.8	0	
2006-Oct-20	0:08	243	12.46	6.3	14.4	6.1	13.8	0	
2006-Oct-20	0:08	229	12.56	6.1	17.5	6.1	16.9	0	
2006-Oct-20	0:09	224	12.33	6.5	20.7	6.2	20.0	0	
2006-Oct-20	0:09	215	12.28	6.1	23.8	5.9	22.9	0	
2006-Oct-20	0:10	201	12.24	6.1	26.9	5.9	25.9	0	
2006-Oct-20	0:10	192	12.19	6.1	29.9	5.9	28.8	0	
2006-Oct-20	0:11	188	12.37	6.2	33.0	5.9	31.8	0	
2006-Oct-20	0:11	179	12.50	6.1	36.1	5.9	34.8	0	
2006-Oct-20	0:12	174	12.52	6.0	39.3	6.0	37.8	0	
2006-Oct-20	0:12	165	12.55	6.2	42.4	5.9	40.8	0	
2006-Oct-20	0:13	165	12.36	6.2	45.4	6.0	43.7	0	
2006-Oct-20	0:13	169	12.26	6.3	48.6	6.1	46.7	0	
2006-Oct-20	0:14	169	12.17	6.3	51.7	6.1	49.8	0	
2006-Oct-20	0:14	165	11.95	6.3	54.9	6.1	52.8	0	
2006-Oct-20	0:15	128	12.21	6.6	57.5	5.7	55.3	0	
2006-Oct-20	0:15	105	10.82	5.1	60.2	4.9	57.7	0	
2006-Oct-20	0:16	101	11.63	5.1	62.7	4.8	60.1	0	
2006-Oct-20	0:16	156	12.47	5.9	65.3	5.7	62.7	0	
2006-Oct-20	0:17	156	12.54	5.8	68.2	5.7	65.5	0	
2006-Oct-20	0:17	142	12.36	5.8	71.2	5.7	68.4	0	
2006-Oct-20	0:18	137	12.28	5.9	74.1	5.6	71.2	0	
2006-Oct-20	0:18	142	12.20	5.9	77.0	5.7	74.0	0	
2006-Oct-20	0:19	137	12.17	5.9	80.0	5.7	76.9	0	
2006-Oct-20	0:19	142	12.11	6.0	83.0	5.8	79.7	0	
2006-Oct-20	0:20	146	12.20	6.1	86.0	5.8	82.6	0	
2006-Oct-20	0:20	156	12.46	6.0	89.0	5.8	85.5	0	
2006-Oct-20	0:21	146	12.63	5.8	92.0	5.6	88.4	0	
2006-Oct-20	0:21	151	12.55	5.9	94.9	5.7	91.2	0	
2006-Oct-20	0:22	146	12.56	5.9	97.8	5.7	94.1	0	
2006-Oct-20	0:22	142	12.46	5.9	100.7	5.6	96.9	0	
2006-Oct-20	0:23	133	12.44	5.7	103.7	5.6	99.8	0	
2006-Oct-20	0:23	142	12.42	5.8	106.6	5.5	102.6	0	
2006-Oct-20	0:24	137	12.43	5.7	109.5	5.5	105.3	0	
2006-Oct-20	0:24	137	12.39	5.8	112.4	5.5	108.1	0	
2006-Oct-20	0:25	128	12.36	5.9	115.2	5.7	110.9	0	
2006-Oct-20	0:25	133	12.34	5.7	118.1	5.5	113.6	0	
2006-Oct-20	0:26	133	12.07	5.7	121.0	5.5	116.4	0	
2006-Oct-20	0:26	128	12.36	5.7	123.8	5.5	119.1	0	

KCC
FEB 01 2007
CONFIDENTIAL

RECEIVED
KANSAS CORPORATION COMMISSION
FEB 07 2007
CONSERVATION DIVISION
WICHITA, KS

Well		Field			Service Date		Customer		Job Number
VICTORY MORROW LIME UNIT #304		VICTORY			06293-Oct-20		OXY RESOURCE CALIFORNIA LLC		2205552318
Date	Time	CMT TREAT PRES	CMT DENS	CMT RATE	CMT VOL	CMT TPLX RATE	CMT TPLX VOL	0	Message
	24 hr clock	psi	lb/gal	bbl/min	bbl	bbl/min	bbl	0	
2006-Oct-20	0:27	133	12.75	5.7	126.6	5.5	121.9	0	
2006-Oct-20	0:27	142	12.63	5.7	129.5	5.5	124.6	0	
2006-Oct-20	0:28	128	12.40	5.7	132.3	5.5	127.4	0	
2006-Oct-20	0:28	128	12.24	5.8	135.2	5.6	130.2	0	
2006-Oct-20	0:29	137	12.15	5.8	138.1	5.6	133.0	0	
2006-Oct-20	0:29	133	12.24	5.9	141.0	5.7	135.8	0	
2006-Oct-20	0:30	137	12.38	5.8	143.9	5.6	138.6	0	
2006-Oct-20	0:30	133	12.46	5.8	146.8	5.6	141.4	0	
2006-Oct-20	0:31	146	12.57	5.9	149.7	5.7	144.2	0	
2006-Oct-20	0:31	146	12.44	5.9	152.6	5.7	147.1	0	
2006-Oct-20	0:32	142	12.43	5.8	155.5	5.5	149.9	0	
2006-Oct-20	0:32	124	12.41	5.8	158.4	5.6	152.7	0	
2006-Oct-20	0:33	137	12.40	5.8	161.3	5.6	155.5	0	
2006-Oct-20	0:33	133	12.37	5.8	164.2	5.6	158.3	0	
2006-Oct-20	0:34	128	12.33	5.8	167.1	5.6	161.1	0	
2006-Oct-20	0:34	137	12.28	5.8	170.1	5.6	163.9	0	
2006-Oct-20	0:35	92	12.27	5.8	172.9	5.6	166.7	0	
2006-Oct-20	0:35	133	12.26	5.8	175.8	5.6	169.5	0	
2006-Oct-20	0:36	137	12.35	5.9	178.8	5.7	172.4	0	
2006-Oct-20	0:36	142	12.38	6.0	181.8	5.8	175.2	0	
2006-Oct-20	0:37	137	11.82	6.1	184.7	5.8	178.1	0	
2006-Oct-20	0:37	146	12.47	6.0	187.7	5.8	181.0	0	
2006-Oct-20	0:38	156	12.76	6.0	190.7	5.8	183.9	0	
2006-Oct-20	0:38	151	12.78	6.0	193.7	5.8	186.8	0	
2006-Oct-20	0:39	156	12.54	6.0	196.8	5.8	189.7	0	
2006-Oct-20	0:39	146	12.54	6.0	199.8	5.9	192.7	0	
2006-Oct-20	0:40	151	12.45	6.2	202.8	5.9	195.6	0	
2006-Oct-20	0:40	151	12.48	6.1	205.9	5.9	198.5	0	
2006-Oct-20	0:41	151	12.42	6.2	208.9	5.9	201.5	0	
2006-Oct-20	0:41	151	12.05	6.1	212.0	5.9	204.4	0	
2006-Oct-20	0:42	156	12.17	6.1	215.0	5.9	207.4	0	
2006-Oct-20	0:42	165	12.40	6.2	218.1	6.0	210.4	0	
2006-Oct-20	0:43	174	12.42	6.1	221.2	6.0	213.4	0	
2006-Oct-20	0:43	179	12.45	6.2	224.3	6.0	216.3	0	
2006-Oct-20	0:44	174	12.45	6.1	227.4	6.0	219.3	0	
2006-Oct-20	0:44	188	12.44	6.2	230.4	6.0	222.3	0	
2006-Oct-20	0:45	192	12.48	6.2	233.6	6.0	225.3	0	
2006-Oct-20	0:45	188	12.47	6.2	236.7	6.0	228.3	0	
2006-Oct-20	0:46	192	12.44	6.3	239.9	6.1	231.5	0	
2006-Oct-20	0:46	201	12.27	6.3	243.0	6.1	234.5	0	
2006-Oct-20	0:47	197	12.25	6.3	246.2	6.1	237.6	0	
2006-Oct-20	0:47	201	12.68	6.3	249.2	6.1	240.6	0	
2006-Oct-20	0:48								Reset Total, Vol = 251.13 bbl
2006-Oct-20	0:48	224	13.33	6.3	251.1	6.1	242.5	0	
2006-Oct-20	0:48	211	13.37	6.4	0.1	6.1	0.1	0	
2006-Oct-20	0:48								End Lead Slurry
2006-Oct-20	0:48	215	13.40	6.4	0.2	6.1	0.2	0	
2006-Oct-20	0:48								Start Mixing Tail Slurry
2006-Oct-20	0:48	224	13.63	6.4	1.3	6.1	1.2	0	
2006-Oct-20	0:48	247	14.23	6.3	4.4	6.1	4.3	0	
2006-Oct-20	0:49	256	14.55	6.3	7.6	6.1	7.3	0	
2006-Oct-20	0:49	247	14.88	6.2	10.7	6.0	10.4	0	
2006-Oct-20	0:50	275	15.23	6.3	13.8	6.1	13.4	0	
2006-Oct-20	0:50	261	15.12	6.3	17.0	6.1	16.5	0	

KCC
FEB 01 2007
CONFIDENTIAL

RECEIVED
KANSAS CORPORATION COMMISSION

FEB 07 2007

CONSERVATION DIVISION
WICHITA, KS

Well		Field			Service Date	Customer			Job Number
VICTORY MORROW LIME UNIT #304		VICTORY			06293-Oct-20	OXY RESOURCE CALIFORNIA LLC			2205552318
Date	Time	CMT TREAT PRES	CMT DENS	CMT RATE	CMT VOL	CMT TPLX RATE	CMT TPLX VOL	0	Message
	24 hr clock	psi	lb/gal	bbl/min	bbl	bbl/min	bbl	0	
2006-Oct-20	0:51	261	15.01	6.3	20.1	6.1	19.5	0	
2006-Oct-20	0:51	256	14.98	6.2	23.2	6.1	22.6	0	
2006-Oct-20	0:52	243	14.63	6.3	26.4	6.1	25.6	0	
2006-Oct-20	0:52	229	14.78	6.3	29.5	6.2	28.7	0	
2006-Oct-20	0:53	238	14.95	6.3	32.7	6.1	31.8	0	
2006-Oct-20	0:53	243	15.05	6.3	35.9	6.1	34.8	0	
2006-Oct-20	0:54	224	14.93	6.3	39.0	6.1	37.9	0	
2006-Oct-20	0:54	252	15.67	6.3	42.1	6.1	41.0	0	
2006-Oct-20	0:55	124	15.75	4.4	44.4	3.7	42.9	0	
2006-Oct-20	0:55								Reset Total, Vol = 45.60 bbl
2006-Oct-20	0:55	-14	14.67	0.1	45.6	0.0	43.8	0	
2006-Oct-20	0:55								End Tail Slurry
2006-Oct-20	0:55	-14	14.88	0.0	0.0	0.0	0.0	0	
2006-Oct-20	0:55								Drop Top Plug
2006-Oct-20	0:55	-14	14.96	0.0	0.0	0.0	0.0	0	
2006-Oct-20	0:55								Start Displacement
2006-Oct-20	0:55	-14	15.00	0.0	0.0	0.0	0.0	0	
2006-Oct-20	0:55	-14	2.86	0.0	0.0	0.0	0.0	0	
2006-Oct-20	0:56	-14	15.13	0.0	0.0	0.0	0.0	0	
2006-Oct-20	0:56	-14	15.16	0.0	0.0	0.0	0.0	0	
2006-Oct-20	0:57	-14	-0.00	0.6	3.6	0.0	0.0	0	
2006-Oct-20	0:57	-14	-0.00	0.0	3.6	0.0	0.0	0	
2006-Oct-20	0:58	-14	10.78	0.0	3.6	0.0	0.0	0	
2006-Oct-20	0:58	-14	10.79	0.0	3.6	0.0	0.0	0	
2006-Oct-20	0:59	78	9.15	1.9	3.7	0.0	0.0	0	
2006-Oct-20	0:59	69	9.02	5.2	5.9	3.7	0.9	0	
2006-Oct-20	1:00	78	8.95	5.4	8.6	5.1	3.2	0	
2006-Oct-20	1:00	151	8.33	6.6	11.6	6.5	6.2	0	
2006-Oct-20	1:01	128	8.33	6.0	14.6	6.0	9.1	0	
2006-Oct-20	1:01	151	8.35	6.1	17.6	6.0	12.1	0	
2006-Oct-20	1:02	156	8.35	6.2	20.7	6.0	15.1	0	
2006-Oct-20	1:02	156	8.33	6.1	23.7	6.0	18.1	0	
2006-Oct-20	1:03	156	8.34	5.7	26.7	6.0	21.1	0	
2006-Oct-20	1:03	105	8.35	4.8	29.7	5.0	24.1	0	
2006-Oct-20	1:04	165	8.34	4.2	32.4	5.3	26.9	0	
2006-Oct-20	1:04	146	8.33	5.8	35.0	6.2	29.8	0	
2006-Oct-20	1:05	87	8.33	3.5	37.0	3.7	31.8	0	
2006-Oct-20	1:05	92	8.33	3.4	38.8	3.6	33.6	0	
2006-Oct-20	1:06	-3795	-6.25	0.0	39.3	0.0	34.0	0	
2006-Oct-20	1:06	73	8.33	5.9	39.3	0.0	36.2	0	
2006-Oct-20	1:07	133	8.34	1.2	39.3	1.5	36.2	0	
2006-Oct-20	1:07	224	8.33	6.0	39.3	5.9	38.9	0	
2006-Oct-20	1:08	229	8.33	6.0	41.4	5.9	41.8	0	
2006-Oct-20	1:08	238	8.33	6.0	44.4	6.0	44.8	0	
2006-Oct-20	1:09	252	8.33	6.1	47.4	6.0	47.8	0	
2006-Oct-20	1:09	266	8.33	6.2	50.6	6.1	50.9	0	
2006-Oct-20	1:10	284	8.33	6.2	53.7	6.1	53.9	0	
2006-Oct-20	1:10	288	8.33	6.3	56.8	6.2	57.0	0	
2006-Oct-20	1:11	302	8.33	6.2	59.9	6.2	60.1	0	
2006-Oct-20	1:11	325	8.33	6.3	63.1	6.2	63.2	0	
2006-Oct-20	1:12	339	8.33	6.6	66.2	6.2	66.3	0	
2006-Oct-20	1:12	352	8.31	6.5	69.4	6.3	69.4	0	
2006-Oct-20	1:13	375	8.33	6.3	72.6	6.2	72.5	0	
2006-Oct-20	1:13	385	8.33	6.4	75.7	6.2	75.6	0	

RECEIVED
KANSAS CORPORATION COMMISSION
FEB 07 2007
CONSERVATION DIVISION
WICHITA, KS

Well		Field			Service Date		Customer		Job Number	
VICTORY MORROW LIME UNIT #304		VICTORY			06293-Oct-20		OXY RESOURCE CALIFORNIA LLC		2205552318	
Date	Time	CMT TREAT PRES	CMT DENS	CMT RATE	CMT VOL	CMT TPLX RATE	CMT TPLX VOL	0	Message	
	24 hr clock	psi	lb/gal	bbl/min	bbl	bbl/min	bbl	0		
2006-Oct-20	1:14	407	8.33	6.4	78.9	6.3	78.8	0		
2006-Oct-20	1:14	417	8.33	6.2	82.1	6.1	81.9	0		
2006-Oct-20	1:15	444	8.33	6.2	85.2	6.1	84.9	0		
2006-Oct-20	1:15	467	8.33	6.2	88.3	6.1	88.0	0		
2006-Oct-20	1:16	490	8.33	6.2	91.4	6.1	91.0	0		
2006-Oct-20	1:16	499	8.33	6.3	94.5	6.2	94.1	0		
2006-Oct-20	1:17	536	8.33	6.3	97.6	6.2	97.2	0		
2006-Oct-20	1:17	554	8.33	6.2	100.7	6.2	100.3	0		
2006-Oct-20	1:18	568	8.33	6.3	103.9	6.2	103.3	0		
2006-Oct-20	1:18	595	8.33	6.3	107.0	6.2	106.4	0		
2006-Oct-20	1:19	604	8.33	6.3	110.1	6.2	109.5	0		
2006-Oct-20	1:19	522	8.33	3.0	112.2	2.8	111.4	0		
2006-Oct-20	1:20	508	8.33	2.6	113.6	2.6	112.7	0		
2006-Oct-20	1:20	536	8.33	2.7	114.9	2.6	114.0	0		
2006-Oct-20	1:21	1534	8.33	2.5	116.2	2.4	115.3	0		
2006-Oct-20	1:21	1634	8.33	0.0	116.4	0.0	115.4	0		
2006-Oct-20	1:22	1625	8.33	0.0	116.4	0.0	115.4	0		
2006-Oct-20	1:22	343	8.33	0.0	116.4	0.0	115.4	0		
2006-Oct-20	1:23	-9	8.33	0.0	116.4	0.0	115.4	0		
2006-Oct-20	1:23	-9	8.33	0.0	116.4	0.0	115.4	0		
2006-Oct-20	1:23								Reset Total, Vol = 113 bbl by tanks	

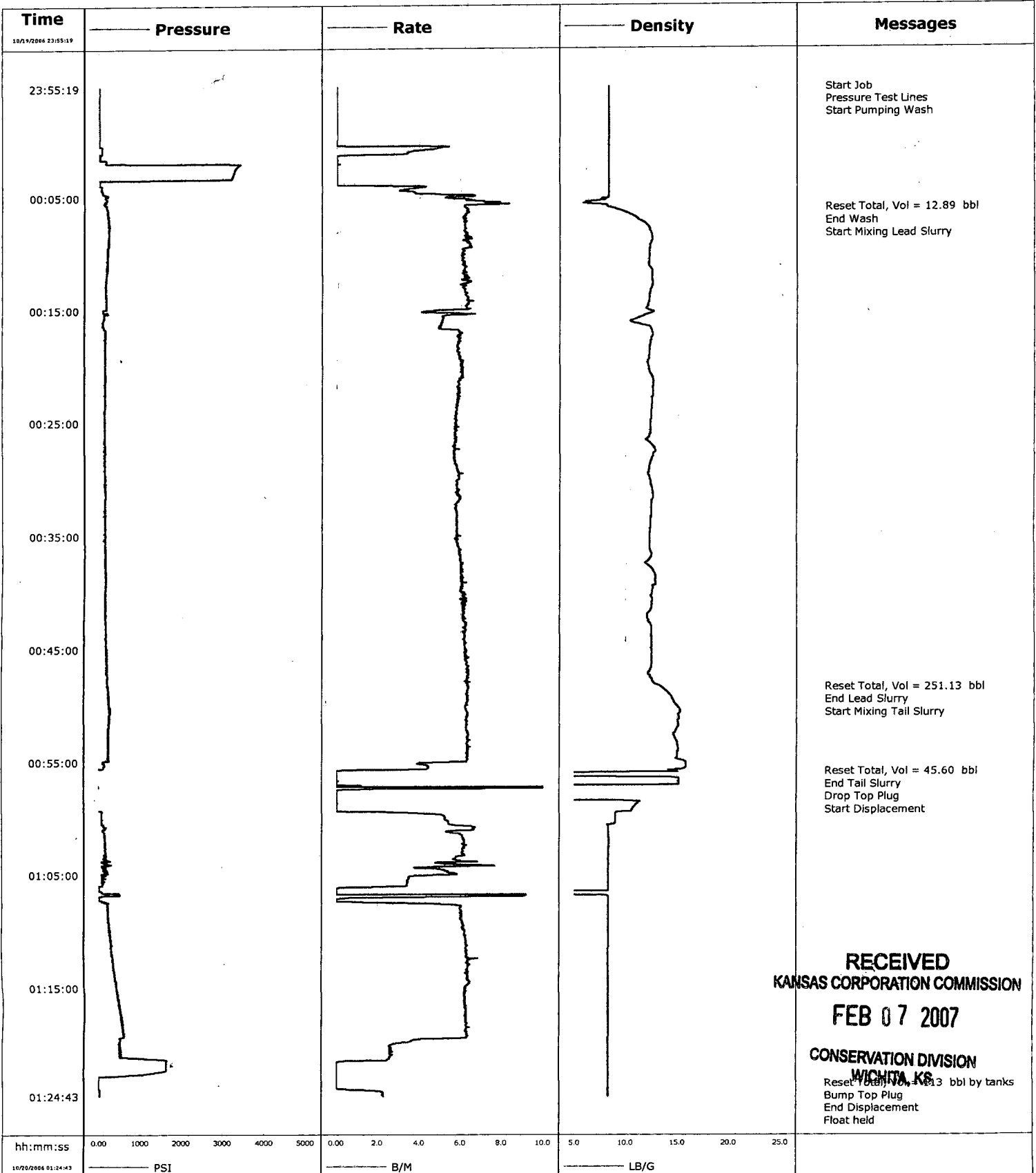
KCC
FEB 01 2007
CONFIDENTIAL

2006-Oct-20	1:23	-9	8.33	0.0	0.0	0.0	0.0	0		
2006-Oct-20	1:24								Bump Top Plug	
2006-Oct-20	1:24	27	8.33	2.2	0.5	0.0	0.0	0		
2006-Oct-20	1:24								End Displacement	
2006-Oct-20	1:24	27	8.33	2.3	0.5	0.0	0.0	0		
2006-Oct-20	1:24	32	8.33	2.2	0.6	0.0	0.0	0		
2006-Oct-20	1:24								Float held	
2006-Oct-20	1:24	27	8.33	2.2	1.0	0.0	0.0	0		
2006-Oct-20	1:24								End Job	
2006-Oct-20	1:24	27	8.33	2.2	1.0	0.0	0.0	0		

Post Job Summary									
Average Pump Rates, bpm					Volume of Fluid Injected, bbl				
Slurry	N2	Mud	Maximum Rate	Total Slurry	Mud	Spacer	N2		
4			6	297	0	13			
Treating Pressure Summary, psi					Breakdown Fluid				
Maximum	Final	Average	Bump Plug to	Breakdown	Volume	Density			
500		200	1600			8.34 lb/gal			
Avg. N2 Percent	Designed Slurry Volume	Displacement	Mix Water Temp	<input checked="" type="checkbox"/> Cement Circulated to Surface? Volume		80	bbl		
%	301 bbl	113 bbl	60 °F	<input type="checkbox"/> Washed Thru Perfs To		ft			
Customer or Authorized Representative			Schlumberger Supervisor			<input type="checkbox"/> Circulation Lost		<input checked="" type="checkbox"/> Job Completed	
Willimon, Wes			Grigoriev, Valeriy						

RECEIVED
KANSAS CORPORATION COMMISSION
FEB 07 2007
CONSERVATION DIVISION
Page 5 of 6
WICHITA, KS

Well	VMLU 304	Client	Oxy
Field		SIR No.	2205552318
Engineer	Val Grigoriev	Job Type	8 5/8" Surface
Country	United States	Job Date	10-19-2006



RECEIVED
KANSAS CORPORATION COMMISSION
FEB 07 2007

CONSERVATION DIVISION
WICHITA, KS

2-1-08



OXY USA Inc.
1701 N. Kansas, Liberal, KS 67901
P.O. Box 2528, Liberal, KS 67905-2528

KCC
FEB 01 2007
CONFIDENTIAL

February 1, 2007

Kansas State Corporation Commission
Conservation Division, Finney State Office Building
130 S. Market, Room 2078
Wichita, KS 67202-3802

RE: Victory Morrow Lime Unit 304
SW/4 28-30S-33W
Haskell County, Kansas

Dear Sir:

Please file confidential. The following items are being submitted for the above referenced well which was been recently drilled and abandoned.

- 1. KANSAS STATE FORM ACO-1 * 2 copies
- 2. CEMENT TICKETS
- 3. GEOLOGICAL REPORT
- 4. A SET OF ELECTRIC LOGS
- 5. WELL PLUGGING RECORD FORM CP-4

If there are any questions or you require further information, please contact me at the above address or by phone at (620) 629-4229.

Sincerely,

Rafael Bacigalupo
Capitol Projects

Enclosures

Cc: OXY - Houston
OXY - Well File

RECEIVED
KANSAS CORPORATION COMMISSION
FEB 07 2007
CONSERVATION DIVISION
WICHITA, KS