

TYPE OR PRINT

NOTICE OF INTENTION TO DRILL

C-1

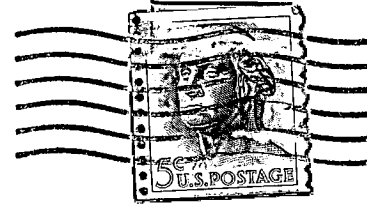
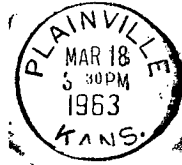
TO BE FILED WITH THE STATE CORPORATION COMMISSION PRIOR TO COMMENCEMENT OF WELL

1. Operator Morris G. Veverka Oil Operations Address Box 181, Plainville, Kansas
2. Lease name Clarke Well No. 1 County Russell
3. Well Location NW NW NE Sec. 21 Township 12 Range 15 W
4. Well to be drilled 330 ft. from nearest lease line.
5. Drilling Contractor Terrel Drlg & Prod. Address Russell, Kansas
6. Type of equipment: Rotary Cable Tool Approx. date operation to begin 3-18-63 196
7. Well to be drilled for Oil Gas Disposal Input Estimated Total Depth of Well 3450 ft.
8. Depth of deepest fresh water well within one mile of location non ft. If none exists, write NONE
9. Ground elevation at location is approx. 5 ft. higher or ~~XXXXXXXXXX~~ than ground elevation at water well.
10. Depth of the deepest municipal water well within three miles of location none ft. If none exists, write NONE
11. Operator states that he will set surface pipe at least 25 ft. below all Tertiary or unconsolidated deposits and, taking into consideration differences in ground elevations, that the minimum depth necessary, to the best of his knowledge and belief, to protect all fresh water zones is 150 ft. and operator agrees to set surface pipe at this location to a depth of not less than 150 ft. Alternate 1 Alternate 2 MORRIS G. VEVERKA OIL OPERATIONS

REMARKS:

Signature of Operator

Morris G. Veverka
Morris G. Veverka



**State Corporation Commission of Kansas
Conservation Division
500 Insurance Building
212 North Market
Wichita 2, Kansas**

RECEIVED
STATE CORPORATION COMMISSION
3-19-1963
MAR 19 1963

**CONSERVATION DIVISION
Wichita, Kansas**

(IF PREFERRED, MAIL IN ENVELOPE)