

KANSAS CORPORATION COMMISSION  
OIL & GAS CONSERVATION DIVISION

**ORIGINAL**

Form ACO-1  
September 1999  
Form Must Be Typed

**WELL COMPLETION FORM**  
**WELL HISTORY - DESCRIPTION OF WELL & LEASE**

Operator: License # 5214  
Name: Lario Oil & Gas Company  
Address: 301 S. Market  
City/State/Zip: Wichita, KS 67202  
Purchaser: \_\_\_\_\_  
Operator Contact Person: Jay G. Schweikert  
Phone: (316) 265-5611  
Contractor: Name: Southwind Drilling, Inc.  
License: 33350  
Wellsite Geologist: Vern Schrag

Designate Type of Completion:  
 New Well  Re-Entry  Workover  
 Oil  SWD  SIOW  Temp. Abd.  
 Gas  ENHR  SIGW  
 Dry  Other (Core, WSW, Expl., Cathodic, etc)

Workover/Re-entry: Old Well Info as follows:  
Operator: Natural Gas & Oil Company

Well Name: Kroeker #1  
Original Comp. Date: 2-3-60 Original Total Depth: 3802'  
 Deepening  Re-perf.  Conv. to Enhr./SWD  
 Plug Back  Plug Back Total Depth  
 Commingled Docket No. \_\_\_\_\_  
 Dual Completion Docket No. \_\_\_\_\_  
 Other (SWD or Enhr.?) Docket No. \_\_\_\_\_

8-10-08 8-12-08 9-17-08  
Spud Date or Date Reached TD Completion Date or  
Recompletion Date Recompletion Date

API No. 15 - 095-00111-00-01  
County: Kingman

    NW     NW     NW Sec. 34 Twp. 27 S. R. 5  East  West  
330 feet from S (N) (circle one) Line of Section  
330 feet from E (W) (circle one) Line of Section

Footages Calculated from Nearest Outside Section Corner:  
(circle one) NE SE (NW) SW  
Lease Name: Young G Well #: 2-34 RE  
Field Name: Evan Mound South

Producing Formation: \_\_\_\_\_  
Elevation: Ground: 1458' Kelly Bushing: 1467'  
Total Depth: 4120' Plug Back Total Depth: 3928'  
Amount of Surface Pipe Set and Cemented at 264' already set Feet  
Multiple Stage Cementing Collar Used?  Yes  No  
If yes, show depth set \_\_\_\_\_ Feet  
If Alternate II completion, cement circulated from \_\_\_\_\_  
feet depth to \_\_\_\_\_ w/ \_\_\_\_\_ <sup>1</sup>/<sub>2</sub> sx cmt.

**Drilling Fluid Management Plan**  
(Data must be collected from the Reserve Pit)  
Chloride content 80,000 ppm Fluid volume 600 bbls  
Dewatering method used evaporation

Location of fluid disposal if hauled offsite: \_\_\_\_\_  
Operator Name: \_\_\_\_\_  
Lease Name: \_\_\_\_\_ License No.: \_\_\_\_\_  
Quarter \_\_\_\_\_ Sec. \_\_\_\_\_ Twp. \_\_\_\_\_ S. R. \_\_\_\_\_  East  West  
County: \_\_\_\_\_ Docket No.: \_\_\_\_\_

*Att 1 - 26g - 8/13/09*

*Per  
Cl 111  
CP-4*

**INSTRUCTIONS:** An original and two copies of this form shall be filed with the Kansas Corporation Commission, 130 S. Market - Room 2078, Wichita, Kansas 67202, within 120 days of the spud date, recompletion, workover or conversion of a well. Rule 82-3-130, 82-3-106 and 82-3-107 apply. Information of side two of this form will be held confidential for a period of 12 months if requested in writing and submitted with the form (see rule 82-3-107 for confidentiality in excess of 12 months). One copy of all wireline logs and geologist well report shall be attached with this form. ALL CEMENTING TICKETS MUST BE ATTACHED. Submit CP-4 form with all plugged wells. Submit CP-111 form with all temporarily abandoned wells.

All requirements of the statutes, rules and regulations promulgated to regulate the oil and gas industry have been fully complied with and the statements herein are complete and correct to the best of my knowledge.

Signature: Jay G. Schweikert  
Title: Jay G. Schweikert, Operations Engineer Date: 12-12-08

Subscribed and sworn to before me this 12th day of December,  
2008

Notary Public: KATHY L. FORD  
Notary Public - State of Kansas  
My Appt. Expires: 10-22-10  
Date Commission Expires: \_\_\_\_\_

*Kathy L Ford*

**KCC Office Use ONLY**

Letter of Confidentiality Received  
If Denied, Yes  Date: 3/20/09

Wireline Log Received

Geologist Report Received

UIC Distribution

**DEC 15 2008**  
**RECEIVED**

Operator Name: Lario Oil & Gas Company Lease Name: Young G Well #: 2-34 RE  
 Sec. 34 Twp. 27 S. R. 5  East  West County: Kingman

**INSTRUCTIONS:** Show important tops and base of formations penetrated. Detail all cores. Report all final copies of drill stems tests giving interval tested, time tool open and closed, flowing and shut-in pressures, whether shut-in pressure reached static level, hydrostatic pressures, bottom hole temperature, fluid recovery, and flow rates if gas to surface test, along with final chart(s). Attach extra sheet if more space is needed. Attach copy of all Electric Wireline Logs surveyed. Attach final geological well site report.

Drill Stem Tests Taken  Yes  No  
 (Attach Additional Sheets)  
 Samples Sent to Geological Survey  Yes  No  
 Cores Taken  Yes  No  
 Electric Log Run  Yes  No  
 (Submit Copy)

List All E. Logs Run:

ISAT/ACRT/SDL/DSN

<input checked="" type="checkbox"/> Log	Formation (Top), Depth and Datum	<input type="checkbox"/> Sample
Name	Top	Datum
Heebner	2700	-1233
Lansing	2960	-1493
Stark Shale	3354	-1887
Hushpuckney	3389	-1922
BKC	3430	-1963
Pawnee	3554	-2087
Mississippian	3756	-2289

CASING RECORD <input checked="" type="checkbox"/> New <input type="checkbox"/> Used							
Report all strings set-conductor, surface, intermediate, production, etc.							
Purpose of String	Size Hole Drilled	Size Casing Set (In O.D.)	Weight Lbs. / Ft.	Setting Depth	Type of Cement	# Sacks Used	Type and Percent Additives
Production	7 7/8"	5 1/2"	15.5#	3969'	AA-2	130	10# salt, .8% FLA-322,
							.75% GB, .2% DF

ADDITIONAL CEMENTING / SQUEEZE RECORD				
Purpose:	Depth Top Bottom	Type of Cement	#Sacks Used	Type and Percent Additives
<input type="checkbox"/> Perforate <input type="checkbox"/> Protect Casing <input type="checkbox"/> Plug Back TD <input type="checkbox"/> Plug Off Zone				

Shots Per Foot	PERFORATION RECORD - Bridge Plugs Set/Type Specify Footage of Each Interval Perforated	Acid, Fracture, Shot, Cement Squeeze Record (Amount and Kind of Material Used)	Depth
6	3763'-73'	280 bbls XL-300 gel, 235,000 scf N2, 19,800# sand	3763'-73'

TUBING RECORD	Size	Set At	Packer At	Liner Run <input type="checkbox"/> Yes <input type="checkbox"/> No

Date of First, Resumerd Production, SWD or Enhr.	Producing Method
	<input type="checkbox"/> Flowing <input type="checkbox"/> Pumping <input type="checkbox"/> Gas Lift <input type="checkbox"/> Other (Explain)

Estimated Production Per 24 Hours	Oil Bbls.	Gas Mcf	Water Bbls.	Gas-Oil Ratio	Gravity

Disposition of Gas  Vented  Sold  Used on Lease (If vented, Submit ACO-18.)

METHOD OF COMPLETION  Open Hole  Perf.  Dually Comp.  Commingled

Production Interval  Other (Specify)

# LARIO OIL & GAS COMPANY



301 SOUTH MARKET STREET  
WICHITA, KANSAS 67202  
(316) 265-5611 FAX: (316) 265-5610

December 12, 2008

Kansas Corporation Commission  
Oil & Gas Conservation Division  
130 S. Market, Room 2078  
Wichita, KS 67202

**RE: Confidentiality Request for Logs and Drilling Information**

Young G #2-34RE

API #095-00111-00-01

NW NW NW Sec. 34-27S-5W

Kingman Co., KS

Gentlemen:

Please find enclosed the following items for the referenced well:

ACO-1; Well Completion Form

Cementing Invoices

Lario requests that all of the information concerning this well be kept confidential for the maximum time allowable by KCC Regulations. If you require any additional information, please feel free to contact me.

Sincerely,

Kathy Ford  
Engineering Tech

Encl.

XC: SKD, WF

KANSAS CORPORATION COMMISSION  
DEC 15 2008  
RECEIVED



PAGE 1 of 2	CUST NO 1970-LAR004A	INVOICE DATE 08/14/2008
INVOICE NUMBER <b>1970002356</b>		

**Pratt**

**B I L L T O**  
 LARIO OIL & GAS  
 P. O. BOX 307  
 KINGMAN KS 67068  
 ATTN:

**J O B S I T E**  
 LEASE NAME Young "G"  
 WELL NO. 2-34RE OWWO  
 COUNTY Kingman  
 STATE KS  
 JOB DESCRIPTION Cement-New Well Casing/Pipe:  
 JOB CONTACT

JOB #	EQUIPMENT #	PURCHASE ORDER NO.	TERMS	DUE DATE
1970-02361	301	AFE # 08-100	Net 30 DAYS	09/13/2008
<b>For Service Dates: 08/13/2008 to 08/13/2008</b>				
<b>1970-02361</b>				
<b>1970-18728</b>	<b>Cement-New Well Casing</b>	<b>8/13/08</b>		
Pump Charge-Hourly			1.00 Hour	2520.000 2,520.00
Depth Charge; 4001'-5000'			1.00 EA	250.000 250.00
Cementing Head w/Manifold			1.00 EA	290.000 290.00
Plug Container Utilization Charge			1.00 EA	3700.000 3,700.00
Cement Float Equipment			1.00 EA	400.000 400.00
5 1/2" Basket			6.00 EA	110.000 660.00
Cement Float Equipment			180.00 DH	1.400 252.00
Cementing Shoe Packer Type			100.00 DH	7.000 700.00
Cement Float Equipment			415.00 DH	1.600 664.00
Latch Down Plug and Baffle			50.00 Hour	4.250 212.50
Cement Float Equipment			8.00 EA	44.000 352.00 T
Turbolizer			32.00 EA	3.700 118.40 T
Mileage			25.00 EA	4.000 100.00 T
Blending and Mixing Service Charge			99.00 EA	7.500 742.50 T
Mileage			93.00 EA	5.150 478.95 T
Heavy Equipment Mileage			742.00 EA	0.500 371.00 T
Mileage				
Proppant and Bulk Delivery Charges				
Pickup				
Unit Mileage Charge(Pickups, Vans, or Cars)				
Additives				
CC-1, KCI Substitute				
Additives				
Cello-flake				
Additives				
De-foamer				
Additives				
FLA-322				
Additives				
Gas-Blok				
Additives				
Salt				

KANSAS CORPORATION COMMISSION

DEC 15 2008

RECEIVED



Pratt

PAGE 2 of 2	CUST NO 1970-LAR004A	INVOICE DATE 08/14/2008
INVOICE NUMBER <b>1970002356</b>		

**B I L L T O**  
 LARIO OIL & GAS  
 P. O. BOX 307  
 KINGMAN KS 67068  
 ATTN:

**J O B S I T E**  
 LEASE NAME Young "G"  
 WELL NO. 2-34RE OWWO  
 COUNTY Kingman  
 STATE KS  
 JOB DESCRIPTION Cement-New Well Casing/Pipe:  
 JOB CONTACT

JOB #	EQUIPMENT #	PURCHASE ORDER NO.	TERMS	DUE DATE		
1970-02361	301		Net 30 DAYS	09/13/2008		
			QTY	U of M	UNIT PRICE	INVOICE AMOUNT
Additives			1,000.00	EA	1.530	1,530.00 T
<i>Super Flush II</i>						
Cement			50.00	EA	12.000	600.00 T
<i>60/40 POZ</i>						
Cement			130.00	EA	17.000	2,210.00 T
<i>AA2 Cement</i>						
Supervisor			1.00	Hour	175.000	175.00
<i>Service Supervisor Charge</i>						

*ad*  
*lc*  
 EXPL. File  
 AUG 18 2008  
*ad*  
*lc*

KANSAS CORPORATION COMMISSION  
 DEC 15 2008  
 RECEIVED

*BS*  
*8-15-08*

PLEASE REMIT TO: BASIC ENERGY SERVICES, LP PO BOX 841903 DALLAS, TX 75284-1903	SEND OTHER CORRESPONDENCE TO: BASIC ENERGY SERVICES, LP PO BOX 10460 MIDLAND, TX 79702	BID DISCOUNT SUBTOTAL TAX INVOICE TOTAL	-3,755.06 12,571.29 265.39 12,836.68
---	---	--	---

# BASIC

energy services, L.P.

**FIELD ORDER** 18728

Subject to Correction

Date <b>8-13-08</b>		Customer ID		Lease <b>YOUNG 'G'</b>	Well # <b>2-3191-0000</b>	Legal <b>34-27-5</b>
C H A R G E <b>LARIO OIL &amp; GAS</b>		Depth		County <b>KINOMAN</b>	State <b>KS.</b>	Station <b>PRATT</b>
AFE Number <b>08-100</b>		PO Number		Formation	Shoe Joint	
		Casing <b>5 1/2"</b>		Casing Depth <b>5969</b>	TD <b>4120</b>	Job Type <b>1HW-L.S.</b>
		Customer Representative <b>WARREN</b>		Treater <b>BOBBY DRAKE</b>		
		Materials Received by <b>X</b>		<b>Don L. Drake</b>		<b>DLS 8/13/08</b>

Station Code	Product Code	QUANTITY	MATERIALS, EQUIPMENT, and SERVICES USED	UNIT PRICE	AMOUNT
P	CP105	130 sk.	AA2		2210 <sup>00</sup>
P	CP103	50 sk.	60/40102		600 <sup>00</sup>
P	CC102	32 lb.	CELLO-FLAKE (POLE-FLAKE - C)		118 <sup>10</sup>
P	CC105	25 lb.	DE-FOAMER (POWDER)		100 <sup>00</sup>
P	CC111	742 lb.	SALT (FINE)		371 <sup>00</sup>
P	CC115	93 lb.	GAS-BLOK		478 <sup>95</sup>
P	CC129	99 lb.	FLA-322		742 <sup>50</sup>
P	CF706	4 gal.	CC-1 KPL SUBSTITUTE		352 <sup>00</sup>
P	CF155	1000 gal.	SUPER FLUSH II		1530 <sup>00</sup>
P	CF107	1 pg.	LATCH DOWN PLUG + BAFFLE, 5 1/2" (BLUE)		400 <sup>00</sup>
P	CF101	1 pg.	CEMENTING SHOE PACKER SHOE, 5 1/2" (RED)		3700 <sup>00</sup>
P	CF1651	6 pg.	TURBOIZER, 5 1/2"		660 <sup>00</sup>
P	CF1901	1 pg.	5 1/2" BASKET (BLUE)		290 <sup>00</sup>
P	E701	100 mi.	HEAVY EQUIPMENT MILEAGE		700 <sup>00</sup>
P	E713	415 gal.	BULK DELIVERY		664 <sup>00</sup>
P	E700	50 mi.	PICKUP MILEAGE		212 <sup>50</sup>
P	CE240	140 sk.	BLENDED & MIXING SERVICE CHARGE		252 <sup>00</sup>
P	S003	1 pg.	SERVICE SUPERVISOR		175 <sup>40</sup>
P	CE205	1 pg.	DEPTH CHARGE, 4001' - 5000'		2520 <sup>00</sup>
P	CE501	1 pg.	PLUG CONTAINER		250 <sup>00</sup>
Discounted Price					12,591.29

KANSAS CORPORATION COMMISSION

DEC 15 2008  
RECEIVED

Customer <b>LARID OIL + GAS</b>	Lease No.	Date <b>8-13-08</b>
Lease <b>YOUNG '06</b>	Well # <b>2-34RE-00000</b>	
Field Order # <b>18728</b>	Station <b>PRAT</b>	Casing <b>5 1/2</b>
Type Job <b>CNW-L.S.</b>	Formation	Legal Description <b>34-27-5</b>
	Depth	County <b>KINGMAN</b>
		State <b>KS</b>

PIPE DATA		PERFORATING DATA		FLUID USED		TREATMENT RESUME		
Casing Size	Tubing Size	Shots/Ft		Acid	RATE	PRESS	ISIP	
2 1/2				130 SL. AA2				
Depth 3963	Depth	From	To	Pre Pad 145113	Max		5 Min.	
Volume 96.8	Volume	From	To	Pad	Min		10 Min.	
Max Press 1500	Max Press	From	To	Frac	Avg		15 Min.	
Well Connection P.C.	Annulus Vol.	From	To	Flush 9500L 2% KCL	HHP Used		Annulus Pressure	
Plug Depth 4152	Packer Depth	From	To		Gas Volume		Total Load	

Customer Representative <b>MARREN</b>	Station Manager <b>SCOTTY</b>	Treater <b>BURBY</b>
Service Units 19866 19806 19832 21010		
Driver Names <b>ORRICK SHANLINE FREZMAN</b>		

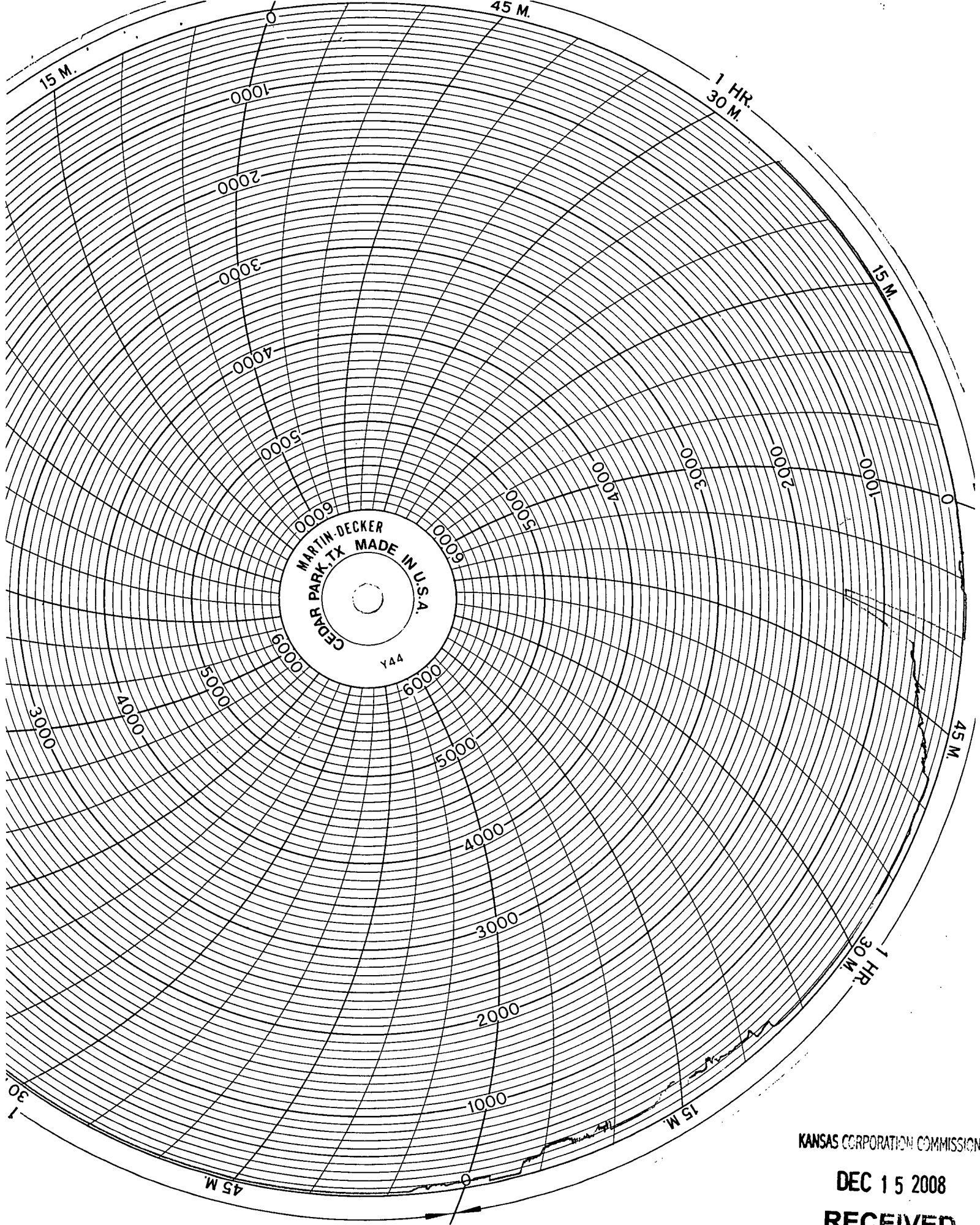
Time	Casing Pressure	Tubing Pressure	Bbls. Pumped	Rate	Service Log
0700					ON LOCATION - SAFETY MEETING
1245					Run 89 lbs - (cont.) 13, 10, 13, 15, 12 Bskt. - 1
1240					1 q on bottom
1245	1100				Hook up to 150; Break Circ. w/ Rig - Set P.S.
1508	300		24	5.0	SUPER FLUSH II
1412	300		3	15.0	H2O SPACER
1513	300		9	15.0	MIX SCAVENGER CMT. @ 12.0#/GAL.
1515	300		40	16.0	MIX AA2 CMT. @ 15.0#/GAL.
1535					RETURN PUMP - PUMP PUMP + LINES
1538	150			7.0	START DISP. w/ 2% KCL
1546	400		55	6.6	LIFT PRESSURE
1555	1500		95		PLUG DOWN
1600			7		PLUG RAT. HOLD
					CIRCULATION THRU JOB
					JOB COMPLETE

THANKS, BURBY

KANSAS CORPORATION COMMISSION

DEC 15 2008

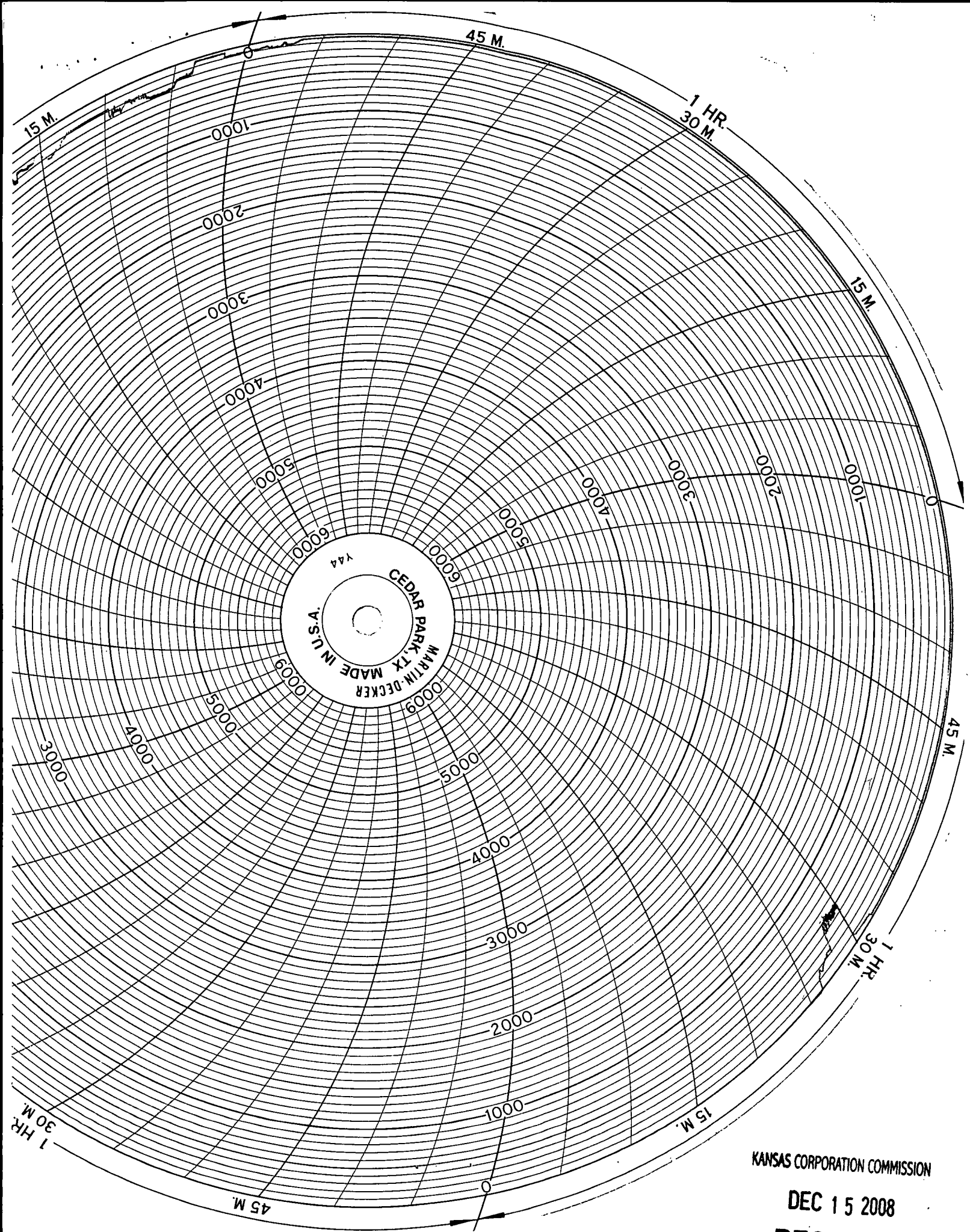
RECEIVED



MARTIN-DECKER  
CEDAR PARK, TX MADE IN U.S.A.  
Y44

KANSAS CORPORATION COMMISSION  
DEC 15 2008  
RECEIVED





Y44  
CEDAR PARK, TX  
MADE IN U.S.A.  
MARTIN DECKER

KANSAS CORPORATION COMMISSION

DEC 15 2008

RECEIVED