

KANSAS CORPORATION COMMISSION  
OIL & GAS CONSERVATION DIVISION

ORIGINAL

Form ACO-1  
September 1999  
Form Must Be Typed

**CONFIDENTIAL**

**WELL COMPLETION FORM**

**WELL HISTORY - DESCRIPTION OF WELL & LEASE**

Operator: License # 5208  
Name: ExxonMobil Oil Corporation  
Address: P. O. Box 4358  
City/State/Zip: Houston, Texas 77210-4358  
Purchaser: spot market  
Operator Contact Person: Jacqueline Davis  
Phone: (281) 654-1913  
Contractor: Name: Pioneer Drilling Services  
License: 33545

Wellsite Geologist: \_\_\_\_\_  
Designate Type of Completion:  
 New Well     Re-Entry     Workover  
 Oil     SWD     SLOW     Temp. Abd.  
 Gas     ENHR     SIGW  
 Dry     Other (Core, WSW, Expl., Cathodic, etc)

If Workover/Re-entry: Old Well Info as follows:  
Operator: \_\_\_\_\_  
Well Name: \_\_\_\_\_  
Original Comp. Date: \_\_\_\_\_ Original Total Depth: \_\_\_\_\_  
 Deepening     Re-perf.     Conv. to Enhr./SWD  
 Plug Back     Plug Back Total Depth  
 Commingled    Docket No. \_\_\_\_\_  
 Dual Completion    Docket No. \_\_\_\_\_  
 Other (SWD or Enhr.?)    Docket No. \_\_\_\_\_

<u>7/29/06</u>	<u>7/31/06</u>	<u>10/6/06</u>
Spud Date or Recompletion Date	Date Reached TD	Completion Date or Recompletion Date

API No. 15 - 189-22537 -0000  
County: Stevens  
NE NE Sec. 18 Twp. 33 S. R. 35  East  West  
660 feet from S / (N) (circle one) Line of Section  
660 feet from (E) / W (circle one) Line of Section  
Footages Calculated from Nearest Outside Section Corner:  
(circle one) (NE) SE NW SW  
Lease Name: Fincham Well #: 2-18  
Field Name: Panoma  
Producing Formation: Council Grove  
Elevation: Ground: 2990' Kelly Bushing: 3001'  
Total Depth: 3246' Plug Back Total Depth: 3146'  
Amount of Surface Pipe Set and Cemented at 752 Feet  
Multiple Stage Cementing Collar Used?  Yes  No  
If yes, show depth set \_\_\_\_\_ Feet  
If Alternate II completion, cement circulated from \_\_\_\_\_  
feet depth to \_\_\_\_\_ w/ \_\_\_\_\_ sx cmt.

Drilling Fluid Management Plan AHJ NHS 18-08  
(Data must be collected from the Reserve Pit)  
Chloride content 2000 ppm Fluid volume 3900 bbls  
Dewatering method used evaporation  
Location of fluid disposal if hauled offsite: \_\_\_\_\_  
Operator Name: \_\_\_\_\_  
Lease Name: \_\_\_\_\_ License No.: \_\_\_\_\_  
Quarter \_\_\_\_\_ Sec. \_\_\_\_\_ Twp. \_\_\_\_\_ S. R. \_\_\_\_\_  East  West  
County: \_\_\_\_\_ Docket No.: \_\_\_\_\_

**INSTRUCTIONS:** An original and two copies of this form shall be filed with the Kansas Corporation Commission, 130 S. Market - Room 2078, Wichita, Kansas 67202, within 120 days of the spud date, recompletion, workover or conversion of a well. Rule 82-3-130, 82-3-106 and 82-3-107 apply. Information of side two of this form will be held confidential for a period of 12 months if requested in writing and submitted with the form (see rule 82-3-107 for confidentiality in excess of 12 months). One copy of all wireline logs and geologist well report shall be attached with this form. ALL CEMENTING TICKETS MUST BE ATTACHED. Submit CP-4 form with all plugged wells. Submit CP-111 form with all temporarily abandoned wells.

All requirements of the statutes, rules and regulations promulgated to regulate the oil and gas industry have been fully complied with and the statements herein are complete and correct to the best of my knowledge.

Signature: Jacqueline Davis  
Title: Support Ofc Assist Date: 11/13/06  
Subscribed and sworn to before me this 13th day of NOVEMBER,  
2006

Notary Public: Shirona L. Jacks  
Date Commission Expires: 1/12/10  
Notary Public, State of Texas  
My Commission Expires  
**JANUARY 12, 2010**

**KCC Office Use ONLY**

Letter of Confidentiality Attached  
If Denied, Yes  Date: \_\_\_\_\_  
 Wireline Log Received  
 Geologist Report  
 UIC Distribution

**RECEIVED**  
KANSAS CORPORATION COMMISSION  
**NOV 14 2006**

CONSERVATION DIVISION  
WICHITA, KS

Operator Name: ExxonMobil Oil Corporation Lease Name: Fincham Well #: 2-18  
 Sec. 18 Twp. 33 S. R. 35  East  West County: Stevens

**INSTRUCTIONS:** Show important tops and base of formations penetrated. Detail all cores. Report all final copies of drill stems tests giving interval tested, time tool open and closed, flowing and shut-in pressures, whether shut-in pressure reached static level, hydrostatic pressures, bottom hole temperature, fluid recovery, and flow rates if gas to surface test, along with final chart(s). Attach extra sheet if more space is needed. Attach copy of all Electric Wireline Logs surveyed. Attach final geological well site report.

Drill Stem Tests Taken <input type="checkbox"/> Yes <input checked="" type="checkbox"/> No <i>(Attach Additional Sheets)</i>  Samples Sent to Geological Survey <input type="checkbox"/> Yes <input checked="" type="checkbox"/> No  Cores Taken <input type="checkbox"/> Yes <input checked="" type="checkbox"/> No Electric Log Run <input checked="" type="checkbox"/> Yes <input type="checkbox"/> No <i>(Submit Copy)</i>  List All E. Logs Run:  Dual Induction Log	<input checked="" type="checkbox"/> Log Formation (Top), Depth and Datum <input type="checkbox"/> Sample  Name Top Datum   see attachment
--	--

CASING RECORD <input type="checkbox"/> New <input type="checkbox"/> Used							
Report all strings set-conductor, surface, intermediate, production, etc.							
Purpose of String	Size Hole Drilled	Size Casing Set (In O.D.)	Weight Lbs. / Ft.	Setting Depth	Type of Cement	# Sacks Used	Type and Percent Additives
surface	12 1/4"	8 5/8"	32	752'	Class C	560	35/65 Poz C
production	7 7/8"	5 1/2"	15.5	3236'	35/65 Poz C	190	6%D20 + 2%S1
					SS 10	185	.2% D65 & D46

ADDITIONAL CEMENTING / SQUEEZE RECORD				
Purpose:	Depth Top Bottom	Type of Cement	#Sacks Used	Type and Percent Additives
<input type="checkbox"/> Perforate <input type="checkbox"/> Protect Casing <input type="checkbox"/> Plug Back TD <input type="checkbox"/> Plug Off Zone				

Shots Per Foot	PERFORATION RECORD - Bridge Plugs Set/Type Specify Footage of Each Interval Perforated	Acid, Fracture, Shot, Cement Squeeze Record (Amount and Kind of Material Used)	Depth
3	2976' - 2996'	500 gals 15% HCL and gelled water spacer,	2976'-96'
		1PPA - 4PPA sand stages w/N2 @ 65Q,	
		1010 bbls gelled water,	
		1,303,815 scf N2,	
		265,800 lbs 120-40 Ottawa sand	

TUBING RECORD	Size Set At	Packer At	Liner Run <input type="checkbox"/> Yes <input checked="" type="checkbox"/> No
	2 3/8" 3040'	--	

Date of First, Resumed Production, SWD or Enhr. <b>pending</b>	Producing Method <input type="checkbox"/> Flowing <input type="checkbox"/> Pumping <input type="checkbox"/> Gas Lift <input type="checkbox"/> Other (Explain)
---	---

Estimated Production Per 24 Hours	Oil Bbls.	Gas Mcf	Water Bbls.	Gas-Oil Ratio	Gravity
-----------------------------------	-----------	---------	-------------	---------------	---------

Disposition of Gas	METHOD OF COMPLETION	Production Interval
<input type="checkbox"/> Vented <input checked="" type="checkbox"/> Sold <input type="checkbox"/> Used on Lease <i>(If vented, Sumit ACO-18.)</i>	<input type="checkbox"/> Open Hole <input checked="" type="checkbox"/> Perf. <input type="checkbox"/> Dually Comp. <input type="checkbox"/> Commingled <input type="checkbox"/> Other (Specify) _____	

Attachment to Form ACO-1  
 ExxonMobil Oil Corporation  
 Fincham #2-18  
 Sec. 18, Twp. 33S, R. 35W  
 Stevens County

**KCC**  
 NOV 13 2006  
**CONFIDENTIAL**

WELL NAME	INTERVAL NAME	INTVL TOP (FT) (MD-DR)	INTVL BASE (FT) (MD-DR)	INTVL TOP (FT) (TVD-SL)	INTVL BASE (FT) (TVD-SL)	INTVL THICK (FT)	VALID DATA INTVL THICK (FT)
Fincham 2-18	Herrington	2622	2655	379	346	33	33
Fincham 2-18	Krider	2655	2734	346	267	79	79
Fincham 2-18	Winfield	2734	2788	267	213	54	54
Fincham 2-18	Towanda	2788	2850	213	151	62	62
Fincham 2-18	Ft.Riley	2850	2939	151	62	89	89
Fincham 2-18	Wreford	2939	2970	62	31	31	31
Fincham 2-18	CGA	2970	3040	31	-39	70	70
Fincham 2-18	CGB	3040	3174	-39	-173	134	134
Fincham 2-18	CGC	3174	3216	-173	-215	42	42

3,001' KB datum

**RECEIVED**  
 KANSAS CORPORATION COMMISSION  
 NOV 14 2006  
 CONSERVATION DIVISION  
 WICHITA, KS



# Cementing Service Report

Customer <b>EXXON MOBIL CORPORATION</b>				Job Number <b>220551331</b>			
Well <b>FINCHAM 2-18</b>		Location (Legal) <b>Sec 18-T33S-R35W</b>		Schlumberger Location <b>Perryton, TX</b>		Job Start <b>2006-Aug-02</b>	
Field <b>PANOMA GAS</b>		Formation Name/Type <b>Dirty-Sandstone</b>		Deviation		Well MD <b>3,236 ft</b>	
County <b>STEVENS</b>		State/Province <b>KANSAS</b>		BHP <b>112 °F</b>		Well TVD <b>3,236 ft</b>	
Well Master: <b>0630824451</b>		API / UWI: <b>15189225370000</b>		BHSY <b>psi</b>		BHCY <b>°F</b>	
Rig Name <b>PIONEER #49</b>		Drilled For <b>Oil &amp; Gas</b>		Service Via <b>Land</b>		Casing/Liner	
Offshore Zone		Well Class <b>New</b>		Well Type <b>Development</b>		Depth, ft <b>3240</b>	
Drilling Fluid Type		Max. Density <b>lb/gal</b>		Plastic VI: cp		Size, in <b>5.5</b>	
Service Line <b>Cementing</b>		Job Type <b>Cem Prod Casing</b>		Depth, ft		Weight, lb/ft <b>15.5</b>	
Max. Allowed Tubing Pressure <b>1000 psi</b>		Max. Allowed Ann. Pressure <b>psi</b>		Wellhead Connection <b>5 1/2" H&amp;SM</b>		Grade <b></b>	
Service Instructions		Casing/Tubing Secured <input checked="" type="checkbox"/>		1 Hole Volume Circulated prior to Cementing <input checked="" type="checkbox"/>		Thread <b></b>	
Cement 5 1/2" Prod Casing		Lift Pressure: <b>1715 psi</b>		Pipe Rotated <input type="checkbox"/>		Pipe Reciprocated <input type="checkbox"/>	
Lead: 190 SKS 35/65 Poz.C + 6%D20 + 2%S1 + 0.125 pps D130		No. Centralizers: <b>Top Plugs: 1 Bottom Plugs: 0</b>		Cement Head Type: <b>Single</b>		Job Scheduled For: <b>2006-Aug-02 9:00</b>	
Tail: 185 sks of SS10:10+0.2%D85+0.1%D167+0.2%D46+0.125pps D130		Arrived on Location: <b>2006-Aug-02 9:00</b>		Leave Location: <b>2006-Aug-02 13:00</b>		Displacement <b>75 bbl</b>	
Displace with 2% KCl		Casing Tools		Squeeze Job		Packer Type <b></b>	
80 sks of Lead for Rat & Mouse		Shoe Type: <b>Float</b>		Squeeze Type <b></b>		Packer Depth <b>ft</b>	
		Shoe Depth: <b>3240 ft</b>		Tool Type: <b></b>		Open Hole Vol <b>177 bbl</b>	
		Stage Tool Type: <b>ft</b>		Tool Depth: <b>ft</b>		Annular Vol. <b>100 bbl</b>	
		Stage Tool Depth: <b>ft</b>		Tail Pipe Size: <b>in</b>		Casing Vol. <b>77 bbl</b>	
		Collar Type: <b>Float</b>		Tail Pipe Depth: <b>ft</b>		Tubing Vol. <b>bbl</b>	
		Collar Depth: <b>3150 ft</b>		Sqz Total Vol: <b>bbl</b>			

Date	Time	Treating Pressure psi	Flow Rate bbl/min	Volume bbl	CMT DENS lb/gal	Flowmeter Rate bbl/min	Flowmeter Tot bbl	Message
2006-Aug-02	10:36	-5	0.0	0.0	8.31	0.0	0.0	
2006-Aug-02	10:36							Start Job
2006-Aug-02	10:36	-5	0.0	0.0	8.32	0.0	0.0	
2006-Aug-02	10:36	-5	0.0	0.0	8.31	0.0	0.0	
2006-Aug-02	10:37	0	0.0	0.0	8.29	3.1	0.2	
2006-Aug-02	10:37	-5	0.0	0.0	8.29	3.2	1.9	
2006-Aug-02	10:38	-5	0.0	0.0	10.81	3.1	3.5	
2006-Aug-02	10:38	73	0.0	0.0	13.41	4.5	5.4	
2006-Aug-02	10:39	69	0.0	0.0	13.62	4.0	7.4	
2006-Aug-02	10:39	69	0.0	0.0	13.31	4.1	9.5	
2006-Aug-02	10:40	69	0.0	0.0	13.20	4.1	11.5	
2006-Aug-02	10:40	64	0.0	0.0	12.70	4.0	13.5	
2006-Aug-02	10:41	64	0.0	0.0	12.59	4.0	15.5	
2006-Aug-02	10:41	60	0.0	0.0	12.46	3.9	17.5	
2006-Aug-02	10:42	64	0.0	0.0	12.70	3.9	19.5	
2006-Aug-02	10:42	-14	0.0	0.0	12.88	0.0	21.0	
2006-Aug-02	10:43	0	0.0	0.0	12.11	3.0	22.3	
2006-Aug-02	10:44	0	0.0	0.0	12.11	3.0	23.8	
2006-Aug-02	10:44	0	0.0	0.0	12.12	3.1	25.3	
2006-Aug-02	10:45	0	0.0	0.0	12.12	3.1	26.9	
2006-Aug-02	10:45	0	0.0	0.0	12.05	3.1	28.4	
2006-Aug-02	10:46	0	0.0	0.0	12.00	3.1	29.9	

KCC  
NOV 13 2006  
CONFIDENTIAL

RECEIVED  
KANSAS CORPORATION COMMISSION  
NOV 14 2006  
CONSERVATION DIVISION  
WICHITA, KS

Well		Flow			Service Date		Customer		Job Number	
FINCHAM #2-18		PANOMA GAS			06214-Aug 02		EXXON MOBIL CORPORATION		2205551331	
Date	Time 24 hr clock	Treating Pressure psi	Flow Rate bbl/min	Volume bbl	CMT DENS lb/gal	Flowmeter Rate bbl/min	Flowmeter Tot bbl	0	0	Message
2006-Aug-02	10:46	0	0.0	0.0	12.00	3.1	31.5	0		
2006-Aug-02	10:47	0	0.0	0.0	12.00	3.1	33.0	0		
2006-Aug-02	10:47	0	0.0	0.0	12.00	3.1	34.6	0		
2006-Aug-02	10:48	69	0.0	0.0	12.66	4.1	36.2	0		
2006-Aug-02	10:48	64	0.0	0.0	12.75	4.1	38.3	0		
2006-Aug-02	10:49	64	0.0	0.0	12.34	4.0	40.3	0		
2006-Aug-02	10:49	-14	0.0	0.0	12.14	0.0	41.6	0		
2006-Aug-02	10:50	-14	0.0	0.0	12.15	0.0	41.6	0		
2006-Aug-02	10:50	5	0.0	0.0	10.98	3.4	41.9	0		
2006-Aug-02	10:51	0	0.0	0.0	11.01	3.6	43.7	0		
2006-Aug-02	10:51	0	0.0	0.0	11.01	3.6	45.5	0		
2006-Aug-02	10:52	0	0.0	0.0	11.01	3.6	47.3	0		
2006-Aug-02	10:52	0	0.0	0.0	11.02	0.0	47.8	0		
2006-Aug-02	10:53	0	0.0	0.0	11.03	0.0	47.8	0		
2006-Aug-02	10:54	0	0.0	0.0	11.04	0.0	47.8	0		
2006-Aug-02	10:55	0	0.0	0.0	11.05	0.0	47.8	0		
2006-Aug-02	10:56	-5	0.0	0.0	11.09	0.0	47.8	0		
2006-Aug-02	10:57	0	0.0	0.0	11.09	0.0	47.8	0		
2006-Aug-02	10:57	0	0.0	0.0	11.09	0.0	47.9	0		
2006-Aug-02	10:58	64	0.0	0.0	8.37	3.4	49.2	0		
2006-Aug-02	10:58	137	4.9	0.7	8.32	4.6	51.0	0		
2006-Aug-02	10:59	60	0.0	2.3	8.34	2.9	53.3	0		
2006-Aug-02	10:59	69	0.0	2.3	8.35	0.0	53.4	0		
2006-Aug-02	11:00	69	0.0	2.3	8.36	0.0	53.4	0		
2006-Aug-02	11:00	69	0.0	2.3	8.35	0.0	53.4	0		
2006-Aug-02	11:01	133	0.0	0.0	8.35	0.0	0.0	0		
2006-Aug-02	11:01	2371	0.1	0.0	8.41	0.0	0.0	0		
2006-Aug-02	11:02	2325	0.0	0.0	8.43	0.0	0.0	0		
2006-Aug-02	11:02									Pressure Test Lines
2006-Aug-02	11:02	2298	0.0	0.0	8.43	0.0	0.0	0		
2006-Aug-02	11:02	2284	0.0	0.0	8.41	0.0	0.0	0		
2006-Aug-02	11:03	5	0.0	0.0	8.38	0.0	0.0	0		
2006-Aug-02	11:03	0	0.0	0.0	8.35	0.0	0.0	0		
2006-Aug-02	11:04	0	0.0	0.0	8.31	0.0	0.0	0		
2006-Aug-02	11:04	0	0.0	0.0	8.30	0.1	0.0	0		
2006-Aug-02	11:05	188	0.8	0.0	8.51	0.2	0.1	0		
2006-Aug-02	11:05									Start Pumping Spacer
2006-Aug-02	11:05	334	2.2	0.2	8.41	1.3	0.2	0		
2006-Aug-02	11:05	334	3.9	2.0	8.31	4.0	1.9	0		
2006-Aug-02	11:06	343	3.9	4.0	8.31	4.0	3.9	0		
2006-Aug-02	11:06	343	3.9	5.9	8.31	4.0	5.9	0		
2006-Aug-02	11:07	348	3.9	7.9	8.31	4.0	7.9	0		
2006-Aug-02	11:07	366	3.9	9.5	10.93	4.1	9.6	0		
2006-Aug-02	11:07									End Spacer
2006-Aug-02	11:07	371	3.9	9.6	10.92	4.1	9.7	0		
2006-Aug-02	11:07									Reset Total, Vol = 9.59 bbl
2006-Aug-02	11:07	357	3.9	0.1	10.85	4.1	0.1	0		
2006-Aug-02	11:07									Start Mixing Lead Slurry
2006-Aug-02	11:07	357	3.9	0.3	10.86	4.1	0.3	0		
2006-Aug-02	11:08	366	3.9	2.2	12.63	4.0	2.3	0		
2006-Aug-02	11:08	366	4.0	4.2	12.76	4.1	4.3	0		
2006-Aug-02	11:09	357	3.9	6.2	12.66	4.1	6.3	0		
2006-Aug-02	11:09	339	4.0	8.2	12.14	4.1	8.4	0		
2006-Aug-02	11:10	339	4.0	10.1	12.45	4.0	10.4	0		

Aug 2, 2006 WRS3 v3.414-SR

RECEIVED  
KANSAS CORPORATION COMMISSION

NOV 14 2006

Page 2 of 5  
CONSERVATION DIVISION  
WICHITA, KS

Well		Flow			Service Date		Customer		Job Number	
FINCHAM #2-18		PANOMA GAS			08/21-08/02		EXXON MOBIL CORPORATION		220551331	
Date	Time	Treating Pressure	Flow Rate	Volume	CMT DENS	Flowmeter Rate	Flowmeter Tot	0	Message	
	24 hr clock	psi	bbl/min	bbl	lb/gal	bbl/min	bbl	0		
2006-Aug-02	11:10	330	4.0	12.1	12.56	4.1	12.4	0		
2006-Aug-02	11:11	320	4.0	14.1	12.59	4.1	14.5	0		
2006-Aug-02	11:11	298	4.0	16.1	12.53	4.1	16.5	0		
2006-Aug-02	11:12	293	4.0	18.1	12.46	4.2	18.6	0		
2006-Aug-02	11:12	279	4.0	20.2	12.45	4.1	20.7	0		
2006-Aug-02	11:13	275	4.1	22.2	12.45	4.2	22.7	0		
2006-Aug-02	11:13	275	4.0	24.2	12.47	4.1	24.8	0		
2006-Aug-02	11:14	252	4.1	26.2	12.68	4.2	26.9	0		
2006-Aug-02	11:14	233	4.0	28.3	12.76	4.2	29.0	0		
2006-Aug-02	11:15	238	4.1	30.3	12.70	4.2	31.1	0		
2006-Aug-02	11:15	224	4.1	32.3	12.67	4.2	33.2	0		
2006-Aug-02	11:16	206	4.1	34.3	12.65	4.2	35.3	0		
2006-Aug-02	11:16	201	4.1	36.4	12.63	4.2	37.4	0		
2006-Aug-02	11:17	197	4.1	38.4	12.60	4.2	39.5	0		
2006-Aug-02	11:17	174	4.1	40.4	12.59	4.2	41.6	0		
2006-Aug-02	11:18	142	4.1	42.5	12.57	4.1	43.6	0		
2006-Aug-02	11:18	151	4.1	44.5	12.55	4.2	45.7	0		
2006-Aug-02	11:19	142	4.1	46.5	12.53	4.1	47.8	0		
2006-Aug-02	11:19	137	4.1	48.6	12.69	4.2	49.9	0		
2006-Aug-02	11:20	105	4.1	50.8	12.61	4.1	52.0	0		
2006-Aug-02	11:20	82	4.1	52.6	12.46	4.2	54.1	0		
2006-Aug-02	11:21	82	4.1	54.7	12.53	4.2	56.2	0		
2006-Aug-02	11:21	78	4.1	56.7	12.85	4.2	58.3	0		
2006-Aug-02	11:22	78	4.1	58.8	13.21	4.2	60.4	0		
2006-Aug-02	11:22	78	4.1	60.8	13.40	4.2	62.5	0		
2006-Aug-02	11:23	78	4.1	62.8	13.40	4.2	64.6	0		
2006-Aug-02	11:23	78	4.0	64.9	13.46	4.4	66.7	0		
2006-Aug-02	11:24	82	4.1	66.9	13.94	4.3	68.9	0		
2006-Aug-02	11:24	82	4.1	67.5	14.01	4.3	69.5	0	End Lead Slurry	
2006-Aug-02	11:24	92	4.1	67.6	14.02	4.3	69.6	0	Reset Total, Vol = 67.58 bbl	
2006-Aug-02	11:24	87	4.1	0.1	14.04	4.3	0.1	0	Start Mixing Tail Slurry	
2006-Aug-02	11:24	92	4.1	1.4	14.17	4.2	1.4	0		
2006-Aug-02	11:25	101	4.1	3.4	14.61	4.2	3.5	0		
2006-Aug-02	11:25	101	4.1	5.4	14.91	4.2	5.7	0		
2006-Aug-02	11:26	105	4.1	7.5	14.94	4.3	7.8	0		
2006-Aug-02	11:26	101	4.1	9.5	14.88	4.3	9.9	0		
2006-Aug-02	11:27	101	4.1	11.5	14.83	4.3	12.0	0		
2006-Aug-02	11:27	101	4.1	13.6	14.81	4.3	14.2	0		
2006-Aug-02	11:28	105	4.1	15.6	14.88	4.3	16.3	0		
2006-Aug-02	11:28	96	4.1	17.7	14.84	4.3	18.5	0		
2006-Aug-02	11:29	98	4.1	19.7	14.89	4.3	20.6	0		
2006-Aug-02	11:29	96	4.1	21.7	14.88	4.3	22.7	0		
2006-Aug-02	11:30	101	4.1	23.8	14.96	4.3	24.9	0		
2006-Aug-02	11:30	101	4.1	25.8	14.87	4.3	27.0	0		
2006-Aug-02	11:31	101	4.1	27.8	14.94	4.3	29.1	0		
2006-Aug-02	11:31	101	4.1	29.9	14.87	4.2	31.3	0		
2006-Aug-02	11:32	101	4.1	31.9	14.91	4.3	33.4	0		
2006-Aug-02	11:32	101	4.1	33.9	14.85	4.3	35.5	0		
2006-Aug-02	11:33	101	4.1	36.0	15.00	4.3	37.7	0		
2006-Aug-02	11:33	96	4.1	38.0	14.89	4.2	39.8	0		
2006-Aug-02	11:34	101	4.1	40.1	14.89	4.3	41.9	0		

**RECEIVED**  
 KANSAS CORPORATION COMMISSION  
 NOV 14 2006  
 Page 3 of 5  
 CONSERVATION DIVISION  
 WICHITA, KS

Well		FINCHAM #2-1R		Flow		PANOMA GAS		Service Date		Customer		Job Number	
Date		Time		Treating Pressure		Flow Rate		Volume		CMT DENS		Flowmeter	
		24 hr clock		psi		bbl/min		bbl		lb/gal		Rate	
										Flowmeter Tot		0	
										bbl		0	
												Message	
2006-Aug-02	11:34	101	4.1	42.1	15.19	4.3	44.1	0					
2006-Aug-02	11:35	82	3.6	44.1	15.36	3.9	46.2	0					
2006-Aug-02	11:35	110	3.7	45.9	15.37	4.5	48.3	0					
2006-Aug-02	11:36												
2006-Aug-02	11:36	-18	0.0	47.2	13.88	2.3	50.1	0	End Tail Slurry				
2006-Aug-02	11:36												
2006-Aug-02	11:36	-18	0.0	47.2	13.81	0.9	50.1	0	Reset Total, Vol = 47.22 bbl				
2006-Aug-02	11:36	-18	0.0	0.0	13.79	0.2	0.0	0					
2006-Aug-02	11:36	-14	0.0	0.0	13.84	0.1	0.0	0					
2006-Aug-02	11:37	-14	0.0	0.0	13.84	0.0	0.1	0					
2006-Aug-02	11:37	64	0.0	0.0	9.10	2.6	0.7	0					
2006-Aug-02	11:38	60	0.0	0.0	8.51	3.4	2.3	0					
2006-Aug-02	11:38	160	4.9	0.0	8.58	3.7	3.9	0					
2006-Aug-02	11:39	142	5.1	0.0	8.43	5.3	6.5	0					
2006-Aug-02	11:39	146	5.1	0.0	8.36	5.3	9.1	0					
2006-Aug-02	11:40	151	5.2	0.0	8.31	5.3	11.8	0					
2006-Aug-02	11:40	-9	0.0	0.0	8.34	0.0	12.9	0					
2006-Aug-02	11:41	-14	0.0	0.0	8.34	0.0	12.9	0					
2006-Aug-02	11:41	-14	0.0	0.0	8.35	0.0	12.9	0					
2006-Aug-02	11:42	60	0.0	0.0	8.32	5.3	14.3	0					
2006-Aug-02	11:42	60	4.8	0.9	8.32	5.5	17.0	0					
2006-Aug-02	11:43	60	4.9	3.3	8.32	5.6	19.7	0					
2006-Aug-02	11:43	60	4.9	5.7	8.32	5.6	22.6	0					
2006-Aug-02	11:44	60	4.9	8.2	8.32	5.7	25.4	0					
2006-Aug-02	11:44	60	4.9	10.6	8.32	5.6	28.2	0					
2006-Aug-02	11:45	60	4.9	13.1	8.32	5.7	31.0	0					
2006-Aug-02	11:45	114	4.9	15.5	8.32	5.0	33.6	0					
2006-Aug-02	11:46												
2006-Aug-02	11:46	69	3.7	17.2	8.32	4.3	35.4	0	Drop Top Plug				
2006-Aug-02	11:46												
2006-Aug-02	11:46	82	3.6	17.3	8.32	4.1	35.5	0	Start Displacement				
2006-Aug-02	11:46	101	3.7	17.7	8.32	3.8	35.9	0					
2006-Aug-02	11:46	151	3.7	19.6	8.32	3.8	37.8	0					
2006-Aug-02	11:47	174	3.7	26.8	8.32	3.8	26.8	0					
2006-Aug-02	11:47	224	3.7	28.7	8.32	3.8	28.6	0					
2006-Aug-02	11:48	252	3.6	30.5	8.32	3.7	30.5	0					
2006-Aug-02	11:48	284	3.6	32.3	8.32	3.7	32.4	0					
2006-Aug-02	11:49	334	3.6	34.1	8.32	3.6	34.2	0					
2006-Aug-02	11:49	375	3.6	35.9	8.32	3.7	36.0	0					
2006-Aug-02	11:50	403	3.6	37.7	8.32	3.7	37.8	0					
2006-Aug-02	11:50	444	3.6	39.5	8.32	3.6	39.7	0					
2006-Aug-02	11:51	485	3.6	41.3	8.32	3.7	41.5	0					
2006-Aug-02	11:51	522	3.6	43.1	8.32	3.6	43.3	0					
2006-Aug-02	11:52	572	3.6	44.9	8.32	3.6	45.1	0					
2006-Aug-02	11:52	618	3.6	46.7	8.32	3.7	47.0	0					
2006-Aug-02	11:53	645	3.6	48.5	8.32	3.6	48.9	0					
2006-Aug-02	11:53	673	3.6	50.3	8.32	3.6	50.7	0					
2006-Aug-02	11:54	728	3.6	52.0	8.32	3.6	52.4	0					
2006-Aug-02	11:54	755	3.6	53.8	8.31	3.6	54.2	0					
2006-Aug-02	11:55	806	3.6	55.6	8.31	3.6	56.0	0					
2006-Aug-02	11:55	833	3.5	57.4	8.32	3.6	57.8	0					
2006-Aug-02	11:56	879	3.5	59.1	8.32	3.6	59.6	0					
2006-Aug-02	11:56	906	3.5	60.9	8.32	3.6	61.4	0					
2006-Aug-02	11:57	952	3.5	62.6	8.32	3.6	63.2	0					

Aug 2, 2006 WRS3 v3.414-SR

RECEIVED  
KANSAS CORPORATION COMMISSION

NOV 14 2006  
Page 4 of 5

CONSERVATION DIVISION  
WICHITA, KS

Well		Flow			Service Date		Customer		Job Number	
FINCHAM #2-18		PANOMA GAS			08214-Aug-02		EXXON MOBIL CORPORATION		2205661331	
Date	Time	Treating Pressure	Flow Rate	Volume	CMT DENS	Flowmeter Rate	Flowmeter Tot	0	Message	
	24 hr clock	psi	bbt/min	bbt	lb/gal	bbt/min	bbt	0		
2006-Aug-02	11:57	993	3.5	64.4	8.32	3.6	64.9	0		
2006-Aug-02	11:58	957	2.5	66.0	8.32	2.5	66.6	0		
2006-Aug-02	11:58	989	2.5	67.2	8.32	2.5	67.9	0		
2006-Aug-02	11:59	1021	2.5	68.5	8.32	2.5	69.1	0		
2006-Aug-02	11:59	1035	2.5	69.7	8.32	2.5	70.3	0		
2006-Aug-02	12:00	1053	2.5	70.9	8.32	2.5	71.6	0		
2006-Aug-02	12:00	1080	2.4	72.1	8.32	2.5	72.8	0		
2006-Aug-02	12:01	1131	2.5	73.4	8.32	2.5	74.1	0		
2006-Aug-02	12:01	1149	2.4	74.6	8.32	2.5	75.3	0		
2006-Aug-02	12:02	1753	0.0	75.1	8.32	0.0	76.0	0		
2006-Aug-02	12:02	1721	0.0	75.1	8.32	0.0	76.0	0		
2006-Aug-02	12:02								Bump Top Plug	
2006-Aug-02	12:02	1703	0.0	75.1	8.32	0.0	76.0	0		
2006-Aug-02	12:02								End Displacement	
2006-Aug-02	12:02	1726	0.0	75.1	8.32	0.0	76.0	0		
2006-Aug-02	12:02								Reset Total, Vol = 75.12 bbl	
2006-Aug-02	12:02	1707	0.0	0.0	8.32	0.0	0.0	0		
2006-Aug-02	12:03	1712	0.0	0.0	8.32	0.0	0.0	0		
2006-Aug-02	12:03	1717	0.0	0.0	8.32	0.0	0.0	0		
2006-Aug-02	12:05	1396	0.0	0.0	8.32	0.0	0.0	0		
2006-Aug-02	12:05	-9	0.0	0.0	8.32	0.0	0.0	0		
2006-Aug-02	12:06	-5	0.0	0.0	8.32	0.0	0.0	0		
2006-Aug-02	12:06								End Job	

Post Job Summary									
Average Pump Rates, bpm					Volume of Fluid Injected, bbl				
Slurry	N2	Mud	Maximum Rate	Total Slurry	Mud	Spacer	N2		
4			5	119	0	10			
Treating Pressure Summary, psi					Breakdown Fluid				
Maximum	Final	Average	Bump Plug to	Breakdown	Volume	Density			
			1160		Volume	lb/gal			
Avg. N2 Percent	Designed Slurry Volume	Displacement	Mix Water Temp	<input checked="" type="checkbox"/> Cement Circulated to Surface? Volume 10 bbl <input type="checkbox"/> Washed Thru Perfs To ft					
%	119 bbl	75 bbl	°F						
Customer or Authorized Representative			Schlumberger Supervisor		<input type="checkbox"/> Circulation Lost <input checked="" type="checkbox"/> Job Completed				
McBrayer, Thomas			Ahrends, Timothy						

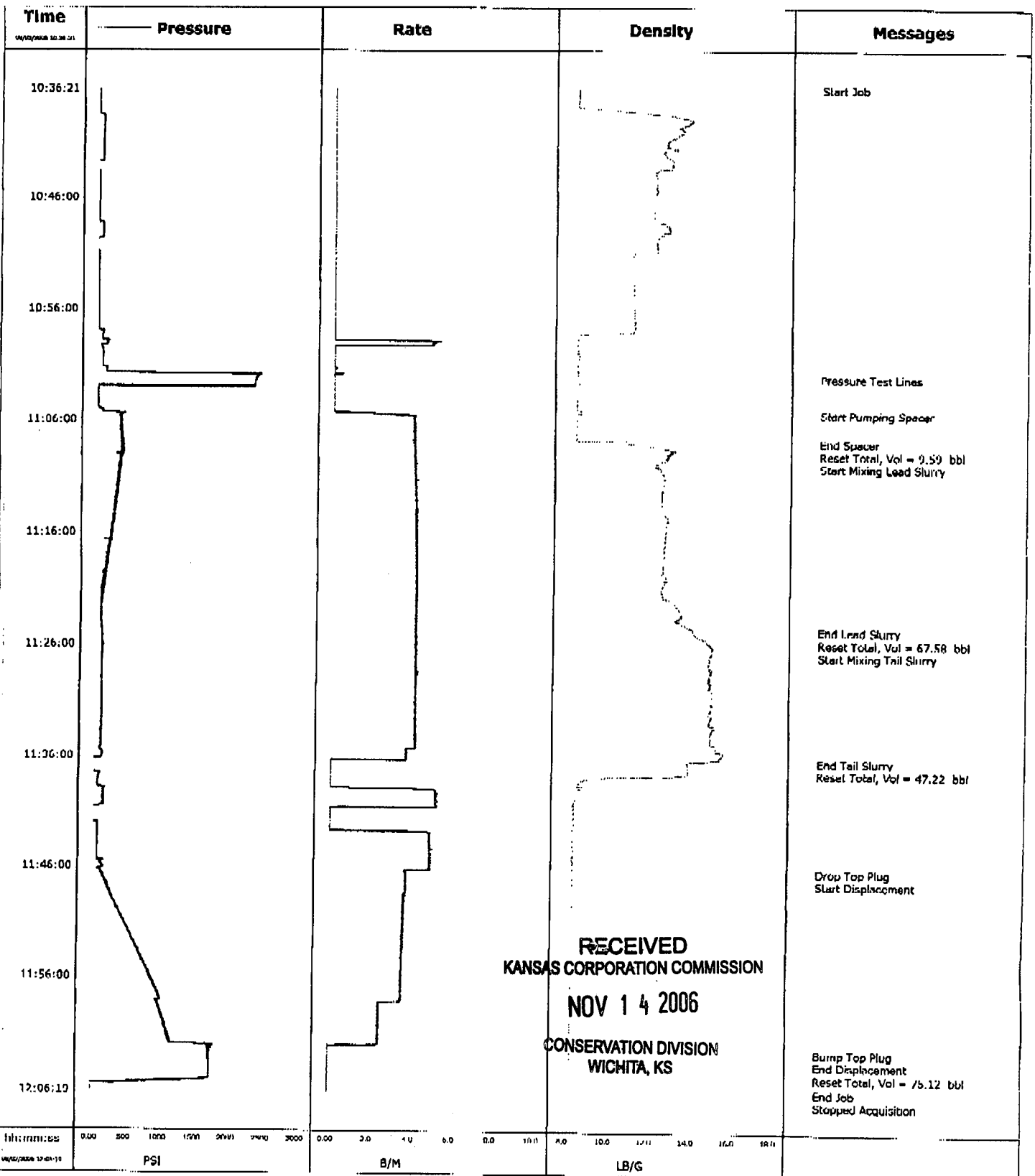
**RECEIVED**  
 KANSAS CORPORATION COMMISSION  
 NOV 14 2006  
 Page 5 of 5  
 CONSERVATION DIVISION  
 WICHITA, KS





# Cementing Job Report

<b>Well</b>	Fincham Z-18	<b>Client</b>	Exxon Mobil
<b>Field</b>		<b>SIR No.</b>	2205551331
<b>Engineer</b>		<b>Job Type</b>	Production
<b>Country</b>	United States	<b>Job Date</b>	08-02-2006





Well		F1			Service Date		Customer		Job Number
FINCHAM #2-18		PANOMA GAS			06/21-Jul-30		EXXON MOBIL CORPORATION		2205551328
Date	Time	Treating Pressure	Density	CMT RATE	CMT VOL	0	0	0	Message
	24 hr clock	psi	lb/gal	bbl/min	bbl	0	0	0	
2006-Jul-30	14:12								Reset Total, Vol = 0.21 bbl
2006-Jul-30	14:12	82	9.23	6.2	0.2	0	0	0	
2006-Jul-30	14:12	105	10.38	6.2	1.7	0	0	0	
2006-Jul-30	14:13	142	11.79	6.3	4.8	0	0	0	
2006-Jul-30	14:13	137	12.32	5.9	7.8	0	0	0	
2006-Jul-30	14:14	146	12.63	5.9	10.7	0	0	0	
2006-Jul-30	14:14	160	12.67	5.9	13.7	0	0	0	
2006-Jul-30	14:15	156	12.68	6.0	16.7	0	0	0	
2006-Jul-30	14:15	156	12.60	6.0	19.6	0	0	0	
2006-Jul-30	14:16	142	12.14	6.0	22.6	0	0	0	
2006-Jul-30	14:16	137	12.60	6.0	25.6	0	0	0	
2006-Jul-30	14:17	156	12.80	6.0	28.7	0	0	0	
2006-Jul-30	14:17	151	12.52	6.0	31.7	0	0	0	
2006-Jul-30	14:18	156	12.63	6.1	34.7	0	0	0	
2006-Jul-30	14:18	156	12.92	6.1	37.7	0	0	0	
2006-Jul-30	14:19	156	12.69	6.1	40.8	0	0	0	
2006-Jul-30	14:19	156	12.80	6.1	43.9	0	0	0	
2006-Jul-30	14:20	156	12.63	6.1	46.9	0	0	0	
2006-Jul-30	14:20	156	12.54	6.1	50.0	0	0	0	
2006-Jul-30	14:21	156	12.46	6.2	53.1	0	0	0	
2006-Jul-30	14:21	156	12.63	6.2	56.1	0	0	0	
2006-Jul-30	14:22	156	12.82	6.2	59.2	0	0	0	
2006-Jul-30	14:22	156	12.48	6.2	62.3	0	0	0	
2006-Jul-30	14:23	160	12.74	6.2	65.4	0	0	0	
2006-Jul-30	14:23	160	12.89	6.2	68.5	0	0	0	
2006-Jul-30	14:24	160	12.68	6.2	71.6	0	0	0	
2006-Jul-30	14:24	165	12.74	6.2	74.7	0	0	0	
2006-Jul-30	14:25	156	12.75	6.2	77.8	0	0	0	
2006-Jul-30	14:25	160	12.84	6.2	80.9	0	0	0	
2006-Jul-30	14:26	160	12.63	6.2	84.0	0	0	0	
2006-Jul-30	14:26	156	12.48	6.2	87.1	0	0	0	
2006-Jul-30	14:27	156	12.86	6.2	90.3	0	0	0	
2006-Jul-30	14:27	156	12.69	6.2	93.4	0	0	0	
2006-Jul-30	14:28	160	12.69	6.3	96.5	0	0	0	
2006-Jul-30	14:28	156	12.69	6.3	99.6	0	0	0	
2006-Jul-30	14:29	156	12.70	6.2	102.7	0	0	0	
2006-Jul-30	14:29	160	12.68	6.2	105.9	0	0	0	
2006-Jul-30	14:30	165	12.73	6.2	109.0	0	0	0	
2006-Jul-30	14:30	165	12.72	6.3	112.1	0	0	0	
2006-Jul-30	14:31	160	12.69	6.3	115.2	0	0	0	
2006-Jul-30	14:31	165	12.72	6.3	118.3	0	0	0	
2006-Jul-30	14:32	169	12.72	6.3	121.5	0	0	0	
2006-Jul-30	14:32	165	12.69	6.2	124.6	0	0	0	
2006-Jul-30	14:33	169	12.53	6.3	125.9	0	0	0	
2006-Jul-30	14:33								End Lead Slurry
2006-Jul-30	14:33								Start Mixing Tail Slurry
2006-Jul-30	14:33	169	12.50	6.3	126.0	0	0	0	
2006-Jul-30	14:33	142	12.27	5.9	127.2	0	0	0	
2006-Jul-30	14:33								Reset Total, Vol = 126.97 bbl
2006-Jul-30	14:33	146	12.95	5.9	0.5	0	0	0	
2006-Jul-30	14:33								Reset Total, Vol = 2.54 bbl
2006-Jul-30	14:33	165	13.85	5.9	2.5	0	0	0	
2006-Jul-30	14:33	174	13.91	5.9	3.4	0	0	0	
2006-Jul-30	14:34	197	14.64	5.9	6.4	0	0	0	

**RECEIVED**  
**KANSAS CORPORATION COMMISSION**  
**NOV 14 2006**  
**CONSERVATION DIVISION**  
**WICHITA, KS**

Well		F.		Service Date		Customer			Job Number
FINCHAM #2-18		PANOMA GAS		06211-Jul-30		EXXON MOBIL CORPORATION			2205551326
Date	Time	Treating Pressure	Density	CMT RATE	CMT VOL	0	0	0	Message
	24 hr clock	psi	lb/gal	bbbl/min	bbbl	0	0	0	
2006-Jul-30	14:34	188	14.74	5.9	9.3	0	0	0	
2006-Jul-30	14:35	192	14.98	5.9	12.2	0	0	0	
2006-Jul-30	14:35	201	15.09	5.9	15.2	0	0	0	
2006-Jul-30	14:36	192	14.79	5.9	18.1	0	0	0	
2006-Jul-30	14:36	192	14.85	5.9	21.0	0	0	0	
2006-Jul-30	14:37	192	14.95	5.9	24.0	0	0	0	
2006-Jul-30	14:37	197	14.99	5.9	26.9	0	0	0	
2006-Jul-30	14:38	197	14.88	5.9	29.9	0	0	0	
2006-Jul-30	14:38	188	14.90	5.9	32.8	0	0	0	
2006-Jul-30	14:39	192	14.91	5.9	35.8	0	0	0	
2006-Jul-30	14:39	82	15.14	3.6	38.2	0	0	0	
2006-Jul-30	14:40	96	15.82	3.7	40.0	0	0	0	
2006-Jul-30	14:40	-9	15.01	0.0	41.8	0	0	0	
2006-Jul-30	14:41	-5	14.54	0.0	41.8	0	0	0	
2006-Jul-30	14:41								End Tail Slurry
2006-Jul-30	14:41	-5	13.49	0.0	41.8	0	0	0	
2006-Jul-30	14:41								Start Displacement
2006-Jul-30	14:41								Drop Top Plug
2006-Jul-30	14:41	-5	13.31	0.0	41.8	0	0	0	
2006-Jul-30	14:41								Reset Total, Vol = 39.28 bbl
2006-Jul-30	14:41	-5	13.20	0.0	41.8	0	0	0	
2006-Jul-30	14:41	-5	12.46	0.0	0.0	0	0	0	
2006-Jul-30	14:41	-5	11.18	0.0	0.0	0	0	0	
2006-Jul-30	14:42	-5	10.47	0.0	0.0	0	0	0	
2006-Jul-30	14:42	-5	10.08	0.0	0.0	0	0	0	
2006-Jul-30	14:43	-5	9.98	0.0	0.0	0	0	0	
2006-Jul-30	14:43	-5	9.49	0.0	0.0	0	0	0	
2006-Jul-30	14:44	69	8.84	0.0	0.0	0	0	0	
2006-Jul-30	14:44	105	9.08	6.8	1.6	0	0	0	
2006-Jul-30	14:45	23	8.72	4.6	4.9	0	0	0	
2006-Jul-30	14:45	50	8.35	6.0	7.8	0	0	0	
2006-Jul-30	14:46	73	8.47	6.1	10.8	0	0	0	
2006-Jul-30	14:46	87	8.47	6.1	13.8	0	0	0	
2006-Jul-30	14:47	114	8.34	6.1	16.9	0	0	0	
2006-Jul-30	14:47	128	8.34	6.1	19.9	0	0	0	
2006-Jul-30	14:48	151	8.35	6.1	23.0	0	0	0	
2006-Jul-30	14:48	165	8.34	6.1	26.0	0	0	0	
2006-Jul-30	14:49	192	8.34	6.1	29.1	0	0	0	
2006-Jul-30	14:49	137	8.34	3.7	32.0	0	0	0	
2006-Jul-30	14:50	174	8.34	2.8	33.5	0	0	0	
2006-Jul-30	14:50	197	8.34	2.8	34.9	0	0	0	
2006-Jul-30	14:51	220	8.34	2.8	36.3	0	0	0	
2006-Jul-30	14:51	215	8.34	2.8	37.7	0	0	0	
2006-Jul-30	14:52	215	8.33	2.8	39.1	0	0	0	
2006-Jul-30	14:52	229	8.34	2.8	40.6	0	0	0	
2006-Jul-30	14:53	888	8.34	0.0	41.7	0	0	0	
2006-Jul-30	14:53								Bump Top Plug
2006-Jul-30	14:53	883	8.34	0.0	41.7	0	0	0	
2006-Jul-30	14:53	883	8.34	0.0	41.7	0	0	0	
2006-Jul-30	14:53								End Displacement
2006-Jul-30	14:53	879	8.34	0.0	41.7	0	0	0	
2006-Jul-30	14:54	879	8.34	0.0	41.7	0	0	0	
2006-Jul-30	14:54	879	8.34	0.0	41.7	0	0	0	
2006-Jul-30	14:55	879	8.34	0.0	41.7	0	0	0	

**RECEIVED**  
 KANSAS CORPORATION COMMISSION  
 NOV 14 2006  
 CONSERVATION DIVISION  
 WICHITA, KS

Well		F.		Service Date		Customer		Job Number	
FINCHAM #2-18		PANOMA GAS		06211-JUL-30		DOXON MOBIL CORPORATION		2205551328	
Date	Time	Treating Pressure	Density	CMT RATE	CMT VOL	0	0	0	Message
	24 hr clock	psi	lb/gal	bbbl/min	bbbl	0	0	0	
2006-Jul-30	14:55	883	8.34	0.0	41.7	0	0	0	
2006-Jul-30	14:56	883	8.34	0.0	41.7	0	0	0	
2006-Jul-30	14:56	888	8.34	0.0	41.7	0	0	0	
2006-Jul-30	14:57	888	8.34	0.0	41.7	0	0	0	
2006-Jul-30	14:57	893	8.34	0.0	41.7	0	0	0	
2006-Jul-30	14:58	893	8.34	0.0	41.7	0	0	0	
2006-Jul-30	14:58	893	8.34	0.0	41.7	0	0	0	
2006-Jul-30	14:59	897	8.34	0.0	41.7	0	0	0	
2006-Jul-30	14:59	897	8.34	0.0	41.7	0	0	0	
2006-Jul-30	15:00	897	8.34	0.0	41.7	0	0	0	
2006-Jul-30	15:00	902	8.34	0.0	41.7	0	0	0	
2006-Jul-30	15:01	902	8.34	0.0	41.7	0	0	0	
2006-Jul-30	15:01	902	8.34	0.0	41.7	0	0	0	
2006-Jul-30	15:02	902	8.34	0.0	41.7	0	0	0	
2006-Jul-30	15:02	906	8.34	0.0	41.7	0	0	0	
2006-Jul-30	15:03	906	8.34	0.0	41.7	0	0	0	
2006-Jul-30	15:03	906	8.34	0.0	41.7	0	0	0	
2006-Jul-30	15:04	906	8.34	0.0	41.7	0	0	0	
2006-Jul-30	15:04	911	8.34	0.0	41.7	0	0	0	
2006-Jul-30	15:05	911	8.34	0.0	41.7	0	0	0	
2006-Jul-30	15:05	911	8.33	0.0	41.7	0	0	0	
2006-Jul-30	15:06	911	8.33	0.0	41.7	0	0	0	
2006-Jul-30	15:06	916	8.33	0.0	41.7	0	0	0	
2006-Jul-30	15:07	916	8.33	0.0	41.7	0	0	0	
2006-Jul-30	15:07	916	8.33	0.0	41.7	0	0	0	
2006-Jul-30	15:08	916	8.33	0.0	41.7	0	0	0	
2006-Jul-30	15:08	916	8.33	0.0	41.7	0	0	0	
2006-Jul-30	15:09	916	8.33	0.0	41.7	0	0	0	
2006-Jul-30	15:09	920	8.33	0.0	41.7	0	0	0	
2006-Jul-30	15:10	920	8.33	0.0	41.7	0	0	0	
2006-Jul-30	15:10	920	8.33	0.0	41.7	0	0	0	
2006-Jul-30	15:11	920	8.33	0.0	41.7	0	0	0	
2006-Jul-30	15:11	920	8.33	0.0	41.7	0	0	0	
2006-Jul-30	15:12	920	8.33	0.0	41.7	0	0	0	
2006-Jul-30	15:12	920	8.33	0.0	41.7	0	0	0	
2006-Jul-30	15:13	925	8.33	0.0	41.7	0	0	0	
2006-Jul-30	15:13	925	8.33	0.0	41.7	0	0	0	
2006-Jul-30	15:14	925	8.33	0.0	41.7	0	0	0	
2006-Jul-30	15:14	925	8.33	0.0	41.7	0	0	0	
2006-Jul-30	15:15	925	8.33	0.0	41.7	0	0	0	
2006-Jul-30	15:15	925	8.33	0.0	41.7	0	0	0	
2006-Jul-30	15:16	925	8.33	0.0	41.7	0	0	0	
2006-Jul-30	15:16	925	8.33	0.0	41.7	0	0	0	
2006-Jul-30	15:17	925	8.33	0.0	41.7	0	0	0	
2006-Jul-30	15:17	925	8.33	0.0	41.7	0	0	0	
2006-Jul-30	15:18	531	8.33	0.0	41.7	0	0	0	
2006-Jul-30	15:18	-5	8.33	0.0	41.7	0	0	0	
2006-Jul-30	15:19	-5	8.33	0.0	41.7	0	0	0	
2006-Jul-30	15:19	0	8.33	0.0	41.7	0	0	0	
2006-Jul-30	15:20	0	8.33	0.0	41.7	0	0	0	
2006-Jul-30	15:20	0	8.33	0.0	41.7	0	0	0	
2006-Jul-30	15:21	0	8.33	0.0	41.7	0	0	0	
2006-Jul-30	15:22	0	8.33	0.0	41.7	0	0	0	

RECEIVED  
 KANSAS CORPORATION COMMISSION  
 NOV 14 2006  
 CONSERVATION DIVISION  
 WICHITA, KS

Well			F.			Service Date		Customer		Job Number	
FINCHAM #2-18			PANOMA GAS			06211-Jul-30		EXXON MOBIL CORPORATION		2205551328	
Date	Time	Treating Pressure	Density	CMT RATE	CMT VOL	0	0	0	Message		
	24 hr clock	psi	lb/gal	bbt/min	bbt	0	0	0			
2006-Jul-30	15:22	0	8.33	0.0	41.7	0	0	0			
2006-Jul-30	15:23	0	8.33	0.0	41.7	0	0	0			
2006-Jul-30	15:23	5	8.33	0.0	41.7	0	0	0			
2006-Jul-30	15:24	5	8.33	0.0	41.7	0	0	0			
2006-Jul-30	15:24	14	8.33	0.0	41.7	0	0	0			
2006-Jul-30	15:25	0	8.33	0.0	41.7	0	0	0			
2006-Jul-30	15:25	-5	8.33	0.0	41.7	0	0	0			
2006-Jul-30	15:26	5	8.33	0.0	41.7	0	0	0			
2006-Jul-30	15:26	0	8.33	0.0	41.7	0	0	0			
2006-Jul-30	15:27	0	8.32	0.0	41.7	0	0	0			
2006-Jul-30	15:27	27	8.32	0.0	41.7	0	0	0			
2006-Jul-30	15:28	69	8.33	0.0	41.7	0	0	0			
2006-Jul-30	15:28	-9	8.33	0.0	41.7	0	0	0			
2006-Jul-30	15:29	-5	8.29	0.0	41.7	0	0	0			
2006-Jul-30	15:29	0	8.27	0.0	41.7	0	0	0			
2006-Jul-30	15:30	0	8.28	0.0	41.7	0	0	0			
2006-Jul-30	15:30	0	9.83	0.0	41.7	0	0	0			
2006-Jul-30	15:31	0	11.05	0.0	41.7	0	0	0			
2006-Jul-30	15:31	0	13.70	0.0	41.7	0	0	0			
2006-Jul-30	15:32	87	15.56	0.0	41.7	0	0	0			
2006-Jul-30	15:32	82	15.25	0.0	41.7	0	0	0			
2006-Jul-30	15:33	78	15.10	0.0	41.7	0	0	0			
2006-Jul-30	15:33	78	14.94	0.0	41.7	0	0	0			
2006-Jul-30	15:34	78	15.29	0.0	41.7	0	0	0			
2006-Jul-30	15:34	82	15.39	0.0	41.7	0	0	0			
2006-Jul-30	15:35	82	15.05	0.0	41.7	0	0	0			
2006-Jul-30	15:35	82	15.37	0.0	41.7	0	0	0			
2006-Jul-30	15:36	82	15.20	0.0	41.7	0	0	0			
2006-Jul-30	15:36	82	15.54	0.0	41.7	0	0	0			
2006-Jul-30	15:37	119	15.51	0.0	41.7	0	0	0			
2006-Jul-30	15:37	-9	10.57	0.0	41.7	0	0	0			
2006-Jul-30	15:38	-9	9.28	0.0	41.7	0	0	0			
2006-Jul-30	15:38	-9	9.28	0.0	41.7	0	0	0			
2006-Jul-30	15:39	-9	9.28	0.0	41.7	0	0	0			
2006-Jul-30	15:39	-9	9.27	0.0	41.7	0	0	0			
2006-Jul-30	15:40	-9	9.27	0.0	41.7	0	0	0			
2006-Jul-30	15:40	-9	9.27	0.0	41.7	0	0	0			
2006-Jul-30	15:41	-9	9.28	0.0	41.7	0	0	0			
2006-Jul-30	15:41	-9	9.27	0.0	41.7	0	0	0			
2006-Jul-30	15:42	73	9.28	0.0	41.7	0	0	0			
2006-Jul-30	15:42	64	8.82	0.0	41.7	0	0	0			
2006-Jul-30	15:43	64	8.40	0.0	41.7	0	0	0			
2006-Jul-30	15:43	64	8.36	0.0	41.7	0	0	0			
2006-Jul-30	15:44	64	8.35	0.0	41.7	0	0	0			
2006-Jul-30	15:44	50	8.55	0.0	41.7	0	0	0			
2006-Jul-30	15:45	46	8.28	0.0	41.7	0	0	0			
2006-Jul-30	15:45	50	8.35	0.0	41.7	0	0	0			
2006-Jul-30	15:46	50	8.27	0.0	41.7	0	0	0			
2006-Jul-30	15:46	69	8.34	3.7	41.7	0	0	0			
2006-Jul-30	15:47	37	8.05	3.7	41.7	0	0	0			
2006-Jul-30	15:47	14	7.72	3.7	41.7	0	0	0			
2006-Jul-30	15:48	64	8.33	3.7	41.7	0	0	0			
2006-Jul-30	15:48	69	8.33	3.7	41.7	0	0	0			
2006-Jul-30	15:49	5	8.33	0.0	41.7	0	0	0			

RECEIVED  
 KANSAS CORPORATION COMMISSION  
 NOV 14 2006  
 CONSERVATION DIVISION  
 WICHITA, KS

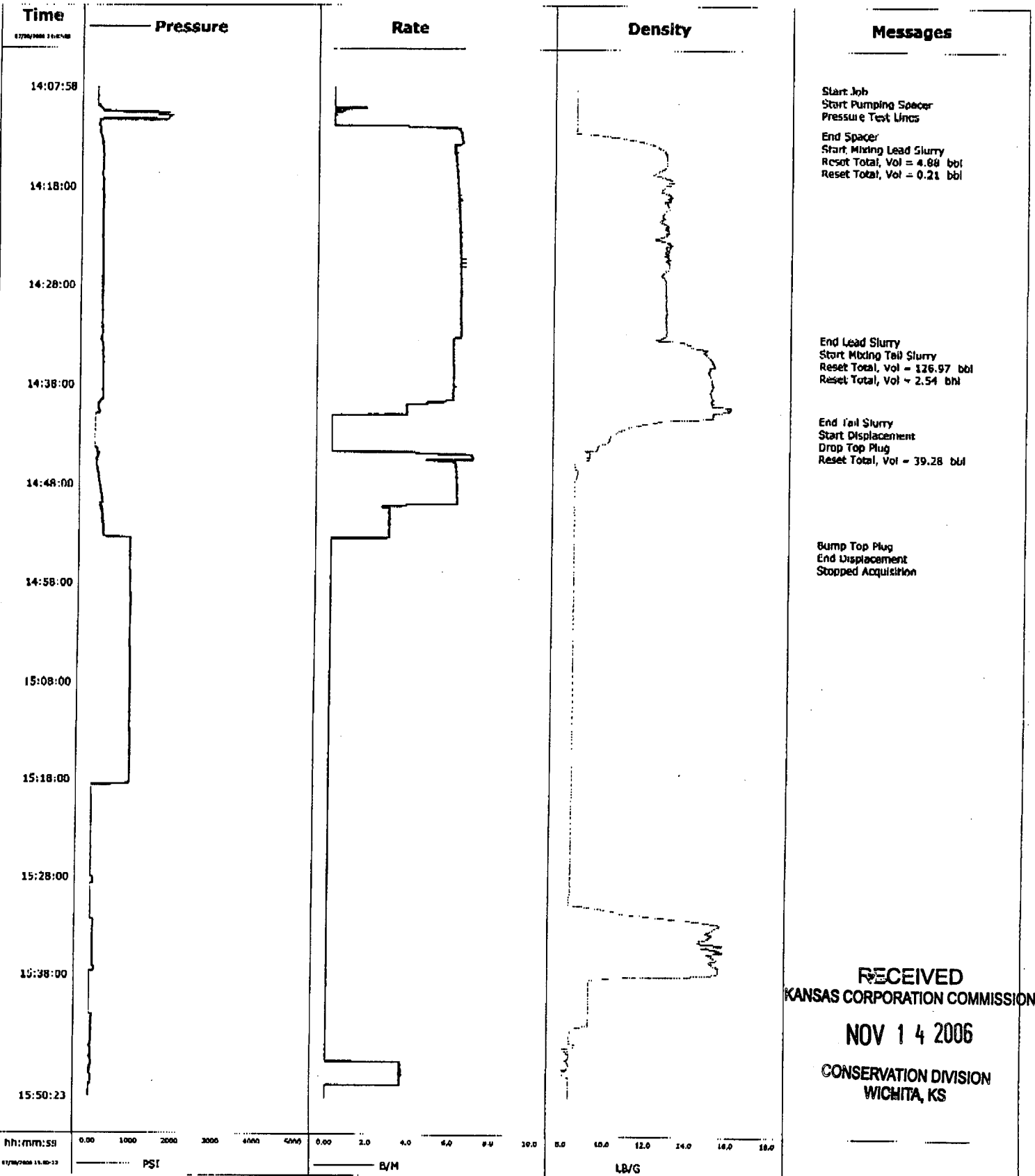
Well FINCHAM #2-15		F. PANOMA GAS		Service Date 08211-Jul-30		Customer EXXON MOBIL CORPORATION		Job Number 2205551326	
Date	Time	Treating Pressure	Density	CMT RATE	CMT VOL	0	0	0	Message
	24 hr clock	psi	lb/gal	bbl/min	bbl	0	0	0	
2006-Jul-30	15:49	0	8.33	0.0	41.7	0	0	0	
<b>Post Job Summary</b>									
Average Pump Rates, bpm					Volume of Fluid Injected, bbl				
Slurry	N2	Mud	Maximum Rate	Total Slurry	Mud	Spacer	N2		
6			6.5	201		5			
Treating Pressure Summary, psi					Breakdown Fluid				
Maximum	Final	Average	Bump Plug to	Breakdown	Volume	Density			
400		200	1000			8.33 lb/gal			
Avg. N2 Percent		Designed Slurry Volume		Displacement	Mix Water Temp	<input checked="" type="checkbox"/> Cement Circulated to Surface?	Volume	35	bbl
		201 bbl		42.5 bbl	F	<input type="checkbox"/> Washed Thru Parts	To	ft	
Customer or Authorized Representative				Schlumberger Supervisor		Flanagan, Patrick		<input type="checkbox"/> Circulation Lost	<input checked="" type="checkbox"/> Job Completed
Clow, Daniel									

**RECEIVED**  
**KANSAS CORPORATION COMMISSION**  
**NOV 14 2006**  
**CONSERVATION DIVISION**  
**WICHITA, KS**



# Cementing Job Report

<b>Well</b>	Finchman	<b>Client</b>	Exxon Mobil
<b>Field</b>	Panoma Gas	<b>SIR No.</b>	
<b>Engineer</b>		<b>Job Type</b>	Cement 8 5/8" surface
<b>Country</b>	United States	<b>Job Date</b>	07-30-2006





<b>Spacer and Water</b>			
Spacer(bbls)	5	Spgr Hydro(PSI)	29.47
		Total Water(bbls)	234.74
<b>Cement Totals</b>			
Lead sks	380	Lead CF	767.6
Yeild	2.02	Lead(bbls)	136.71
Water req.	4229.4	BBLS Water	100.70
Weight	12.5	Lead Height(ft)	210.90
		Lead Hydro(PSI)	137.09
		Excess(bbls)	121.21
Tail sks	180	Tail CF	241.2
Yeild	1.34	Tail BBLS	42.958
Water req	1132.2	BBLS Water	26.957
Weight	14.8	Tail Height(ft)	543.73
		Tail Hydro(PSI)	418.45
<b>Pipe Information</b>			
Casing ID	7.921		
Casing OD	8.625		
Casing Weight	32		
bbls/ft casing	0.0609	Casing cap.(bbls)	45.96
Casing length	754.63	Displacement(bbls)	42.96
Shoe length	49.16	Shoe Cap.(bbls)	2.993844
bbls/ft annular	0.0735	Annular cap.(bbls)	55.47
Annular length	754.63		
<b>Bump &amp; Lift</b>			
Displ Fluid Wt.	8.33	Disp Hydro(PSI)	305.58
Drilling Fluid Wt.	0.00	Lift(PSI)	249.96
		Casing Lift(PSI)	386.90

RECEIVED  
 KANSAS CORPORATION COMMISSION  
 NOV 14 2006  
 CONSERVATION DIVISION  
 WICHITA, KS