

CONFIDENTIAL

KANSAS CORPORATION COMMISSION
OIL & GAS CONSERVATION DIVISION

ORIGINAL

Form ACO-1
September 1999
Form Must Be Typed

WELL COMPLETION FORM
WELL HISTORY - DESCRIPTION OF WELL & LEASE

Operator: License # 5208
Name: ExxonMobil Oil Corporation
Address: P. O. Box 4358
City/State/Zip: Houston, Texas 77210-4358
Purchaser: spot market
Operator Contact Person: Jacqueline Davis
Phone: (281) 654-1913
Contractor: Name: Pioneer Drilling Services
License: 33545

API No. 15 - 189-22532 -06-06
County: Stevens
 -NW- SE -SW Sec. 31 Twp. 32 S. R. 35 East West
1250 feet from (S) N (circle one) Line of Section
1750 feet from E (W) (circle one) Line of Section

Footages Calculated from Nearest Outside Section Corner:
(circle one) NE SE NW (SW)
Lease Name: Republic Fee Unit Well #: 5-31
Field Name: Panoma

Wellsite Geologist: _____
Designate Type of Completion:
 New Well Re-Entry Workover
 Oil SWD SLOW Temp. Abd.
 Gas ENHR SIGW
 Dry Other (Core, WSW, Expl., Cathodic, etc)

Producing Formation: Council Grove
Elevation: Ground: 3017' Kelly Bushing: 3028'
Total Depth: 3240' Plug Back Total Depth: 3134'
Amount of Surface Pipe Set and Cemented at 620 Feet
Multiple Stage Cementing Collar Used? Yes No
If yes, show depth set _____ Feet
If Alternate II completion, cement circulated from _____
feet depth to _____ w/ _____ sx cmt.

If Workover/Re-entry: Old Well Info as follows:
Operator: _____
Well Name: _____
Original Comp. Date: _____ Original Total Depth: _____
 Deepening Re-perf. Conv. to Enhr./SWD
 Plug Back _____ Plug Back Total Depth _____
 Commingled _____ Docket No. _____
 Dual Completion _____ Docket No. _____
 Other (SWD or Enhr.?) _____ Docket No. _____

Drilling Fluid Management Plan AMINH 8-13-08
(Data must be collected from the Reserve Pit)
Chloride content 1000 ppm Fluid volume 3460 bbls
Dewatering method used evaporation
Location of fluid disposal if hauled offsite: _____
Operator Name: _____
Lease Name: _____ License No.: _____
Quarter _____ Sec. _____ Twp. _____ S. R. _____ East West
County: _____ Docket No.: _____

7/24/06 7/26/06 10/12/06
Spud Date or Date Reached TD Completion Date or Recompletion Date

INSTRUCTIONS: An original and two copies of this form shall be filed with the Kansas Corporation Commission, 130 S. Market - Room 2078, Wichita, Kansas 67202, within 120 days of the spud date, recompletion, workover or conversion of a well. Rule 82-3-130, 82-3-106 and 82-3-107 apply. Information of side two of this form will be held confidential for a period of 12 months if requested in writing and submitted with the form (see rule 82-3-107 for confidentiality in excess of 12 months). One copy of all wireline logs and geologist well report shall be attached with this form. ALL CEMENTING TICKETS MUST BE ATTACHED. Submit CP-4 form with all plugged wells. Submit CP-111 form with all temporarily abandoned wells.

All requirements of the statutes, rules and regulations promulgated to regulate the oil and gas industry have been fully complied with and the statements herein are complete and correct to the best of my knowledge.

Signature: Jacqueline Davis
Title: Support Stf ofc Assis Date: 11/10/06
Subscribed and sworn to before me this 10th day of November, 2006.
Notary Public: Roxanne Denise Tack
Date Commission Expires: 09/27/2009

KCC Office Use ONLY

Letter of Confidentiality Attached
If Denied, Yes Date: _____
 Wireline Log Received
 Geologist Report Received
 UIC Distribution

RECEIVED
KANSAS CORPORATION COMMISSION
NOV 13 2006

CONSERVATION DIVISION
WICHITA, KS

Operator Name: ExxonMobil Oil Corporation Lease Name: Republic Fee Unit Well #: 5-31
 Sec. 31 Twp. 32 S. R. 35 East West County: Stevens

INSTRUCTIONS: Show important tops and base of formations penetrated. Detail all cores. Report all final copies of drill stems tests giving interval tested, time tool open and closed, flowing and shut-in pressures, whether shut-in pressure reached static level, hydrostatic pressures, bottom hole temperature, fluid recovery, and flow rates if gas to surface test, along with final chart(s). Attach extra sheet if more space is needed. Attach copy of all Electric Wireline Logs surveyed. Attach final geological well site report.

Drill Stem Tests Taken <input type="checkbox"/> Yes <input checked="" type="checkbox"/> No <i>(Attach Additional Sheets)</i> Samples Sent to Geological Survey <input type="checkbox"/> Yes <input checked="" type="checkbox"/> No Cores Taken <input type="checkbox"/> Yes <input checked="" type="checkbox"/> No Electric Log Run <input checked="" type="checkbox"/> Yes <input type="checkbox"/> No <i>(Submit Copy)</i> List All E. Logs Run: see attachment	<input checked="" type="checkbox"/> Log Formation (Top), Depth and Datum <input type="checkbox"/> Sample Name Top Datum see attachment
--	--

CASING RECORD <input checked="" type="checkbox"/> New <input type="checkbox"/> Used							
Report all strings set-conductor, surface, intermediate, production, etc.							
Purpose of String	Size Hole Drilled	Size Casing Set (In O.D.)	Weight Lbs. / Ft.	Setting Depth	Type of Cement	# Sacks Used	Type and Percent Additives
surface	12 1/4"	8 5/8"	32	620'	Class C	470	35/65 Poz C
production	7 7/8"	5 1/2"	15.5	3230'	35/65 Poz C	180	6%D20+2%S1
					SS 10	180	.2%D65 & D46

ADDITIONAL CEMENTING / SQUEEZE RECORD				
Purpose:	Depth Top Bottom	Type of Cement	#Sacks Used	Type and Percent Additives
<input type="checkbox"/> Perforate <input type="checkbox"/> Protect Casing <input type="checkbox"/> Plug Back TD <input type="checkbox"/> Plug Off Zone				

Shots Per Foot	PERFORATION RECORD - Bridge Plugs Set/Type Specify Footage of Each Interval Perforated	Acid, Fracture, Shot, Cement Squeeze Record <i>(Amount and Kind of Material Used)</i>	Depth
3	2976' - 2996'	500 gal 15% HCL & gelled water spacer, 1PPA - 4PPA sand stages w/N2 @ 65Q, 575 bbls gelled water, 915,600 scf N2, 130,400 lbs 16-30 sand	2976'-96'

TUBING RECORD		Size	Set At	Packer At	Liner Run	<input type="checkbox"/> Yes <input checked="" type="checkbox"/> No
		2 3/8"	3040'			
Date of First, Resumed Production, SWD or Enhr. pending			Producing Method <input type="checkbox"/> Flowing <input type="checkbox"/> Pumping <input type="checkbox"/> Gas Lift <input type="checkbox"/> Other (Explain)			
Estimated Production Per 24 Hours	Oil Bbls.	Gas Mcf	Water Bbls.	Gas-Oil Ratio	Gravity	

Disposition of Gas	METHOD OF COMPLETION	Production Interval
<input type="checkbox"/> Vented <input checked="" type="checkbox"/> Sold <input type="checkbox"/> Used on Lease <i>(If vented, Sumit ACO-18.)</i>	<input type="checkbox"/> Open Hole <input checked="" type="checkbox"/> Perf. <input type="checkbox"/> Dually Comp. <input type="checkbox"/> Commingled _____ <input type="checkbox"/> Other (Specify) _____	

Attachment to Form ACO-1
 ExxonMobil Oil Corporation
 Republic Fee Unit #5-31
 Sec. 31, Twp. 32S, R. 35W
 Stevens County

KCC
 NOV 10 2006
 CONFIDENTIAL

WELL NAME	INTERVAL NAME	INTVL	INTVL	INTVL	INTVL	INTVL	VALID
		TOP (FT) (MD-DR)	BASE (FT) (MD- DR)	TOP (FT) (TVD-SL)	BASE (FT) (TVD-SL)	THICK (FT)	DATA INTVL THICK (FT)
Republic Fee 5-31	Herrington	2620	2652	408	376	32	32
Republic Fee 5-31	Krider	2652	2730	376	298	78	78
Republic Fee 5-31	Winfield	2730	2786	298	242	56	56
Republic Fee 5-31	Towanda	2786	2842	242	186	56	56
Republic Fee 5-31	Ft. Riley	2842	2940	186	88	98	98
Republic Fee 5-31	Wreford	2940	2965	88	63	25	25
Republic Fee 5-31	CGA	2965	3038	63	-10	73	73
Republic Fee 5-31	CGB	3038	3163	-10	-135	125	125
Republic Fee 5-31	CGC	3163	3222	-135	-194	59	57

Datum: 3028' KB

- List All E. Logs Run:
 Gamma Ray
 Hole/Cement Volume Gamma Ray
 Compensated Neutron Log Litho-Density/Gamma Ray
 Microlog Gamma Ray
 Array Induction/SP Linear Correlation/Gamma Ray

RECEIVED
 KANSAS CORPORATION COMMISSION
 NOV 13 2006
 CONSERVATION DIVISION
 WICHITA, KS



Cementing Service Report

Customer EXXON MOBIL CORPORATION				Job Number 2205551323				
Well REPUBLIC FEE UNIT 5-31			Location (Legal) SEC 31-T32S-R35W			Schlumberger Location Perryton, TX		Job Start 2006-Jul-28
Field CATTLE		Formation Name/Type Dirty-Sandstone		Deviation	Bit Size 7.88 in	Well MD 3,240 ft	Well TVD 3,240 ft	
County STEVENS		State/Province KANSAS		BHP psi	BHST 113 °F	BHCT 95 °F	Pore Press. Gradient psi/ft	
Well Master: 0630812293		API / UWI: 15189225320000		Casing/Liner				
Rig Name PIONEER #49	Drilled For Oil & Gas	Service Via Land		Depth, ft 3230	Size, in 5.5	Weight, lb/ft 17	Grade K55	Thread 8RD
Offshore Zone		Well Class New	Well Type Development	Tubing/Drill Pipe				
Drilling Fluid Type Bentonite		Max. Density 9 lb/gal	Plastic Vt: cp 33	Depth,	Size, in	Weight, lb/ft	Grade	Thread
Service Line Cementing		Job Type Cem Prod Casing		Perforations/Open Hole				
Max. Allowed Tubing Pressure 2000 psi	Max. Allowed Ann. Pressure psi	Wellhead Connection 5 1/2" H&SM		Top, ft	Bottom, ft	spf	No. of Shots	Total Interval ft
Service Instructions Cement 5 1/2" Casing 100 sks for Rat & Mouse hole Lead: 180 sks of 35/65 Poz:C+6% D20+2%S1+0.125 pps D130 Tail: 180 sks of SS 10:10+0.2%D65+0.1%D167+0.2%D46+0.125pps D130 Displace with 2% KCl				Treat Down Casing	Displacement 75 bbl	Packer Type	Packer Depth ft	
				Tubing Vol. bbl	Casing Vol. 77 bbl	Annular Vol. 100 bbl	Open Hole Vol. 195 bbl	
Casing/Tubing Secured <input checked="" type="checkbox"/>		1 Hole Volume Circulated prior to Cementing <input checked="" type="checkbox"/>		Casing Tools		Squeeze Job		
Lift Pressure: 2000 psi		Pipe Rotated <input type="checkbox"/>		Pipe Reciprocated <input type="checkbox"/>		Shoe Type: Guide		
No. Centralizers: 23		Top Plugs: 1	Bottom Plugs: 0	Shoe Depth: 3230 ft		Squeeze Type		
Cement Head Type: Single		Job Scheduled For: 2006-Jul-28 15:00		Arrived on Location: 2006-Jul-28 20:00		Leave Location: 2006-Jul-28 20:00		
Stage Tool Type: ft		Stage Tool Depth: ft		Collar Type: Float		Collar Depth: 3142 ft		
Tail Pipe Size: in		Tail Pipe Depth: ft		Bsq Total Vol: bbl		Message		

Date	Time	Treating Pressure 24 hr clock psi	Density lb/gal	Flow Rate bbl/min	CMT VOL bbl	CMT TPLX RATE bbl/min	CMT TPLX VOL bbl	0	0	0	0	Message
2006-Jul-28	17:33	3750	6.25	0.0	0.0	0.0	0.0	0	0	0	0	<div style="font-size: 2em; font-weight: bold; margin-bottom: 5px;">KCC</div> <div style="font-size: 1.2em; font-weight: bold; margin-bottom: 5px;">NOV 10 2006</div> <div style="font-size: 1.5em; font-weight: bold; border: 1px solid black; padding: 2px;">CONFIDENTIAL</div>
2006-Jul-28	17:33	13	8.31	0.0	0.0	0.0	0.0	0	0	0	Start Job Start pumping cement to rat hole and mouse hole	
2006-Jul-28	17:34	0	8.31	0.0	0.0	0.0	0.0	0	0	0		
2006-Jul-28	17:34	0	8.31	0.0	0.0	0.0	0.0	0	0	0		
2006-Jul-28	17:34											
2006-Jul-28	17:34											
2006-Jul-28	17:34	0	8.31	0.0	0.0	0.0	0.0	0	0	0		
2006-Jul-28	17:34	0	8.31	0.0	0.0	0.0	0.0	0	0	0		
2006-Jul-28	17:35	0	8.31	0.0	0.0	0.0	0.0	0	0	0		
2006-Jul-28	17:35	0	8.31	0.0	0.0	0.0	0.0	0	0	0		
2006-Jul-28	17:36	0	8.31	0.0	0.0	0.0	0.0	0	0	0		
2006-Jul-28	17:36	0	8.32	0.0	0.0	0.0	0.0	0	0	0		
2006-Jul-28	17:37	0	8.32	0.0	0.0	0.0	0.0	0	0	0		
2006-Jul-28	17:37	0	8.31	0.0	0.0	0.0	0.0	0	0	0		
2006-Jul-28	17:38	0	8.31	0.0	0.0	0.0	0.0	0	0	0		
2006-Jul-28	17:38	5	8.88	3.1	0.0	0.0	0.0	0	0	0	<div style="font-weight: bold; margin-bottom: 5px;">RECEIVED</div> <div style="font-weight: bold; margin-bottom: 5px;">KANSAS CORPORATION COMMISSION</div> <div style="font-size: 1.5em; font-weight: bold; margin-bottom: 5px;">NOV 13 2006</div>	
2006-Jul-28	17:39	5	10.23	3.0	0.0	0.0	0.0	0	0	0		
2006-Jul-28	17:39	5	11.72	2.9	0.0	0.0	0.0	0	0	0		
2006-Jul-28	17:40	73	13.10	4.6	0.0	0.0	0.0	0	0	0	<div style="font-weight: bold; margin-bottom: 5px;">CONSERVATION DIVISION</div> <div style="font-weight: bold; margin-bottom: 5px;">WICHITA, KS</div>	
2006-Jul-28	17:40	73	13.46	4.2	1.2	0.0	0.0	0	0	0		
2006-Jul-28	17:41	69	12.49	4.1	3.3	0.0	0.0	0	0	0		

Well			Flow		Service Date		Customer		Job Number
RFPUBLIC FEE UNIT #5-31			CATTLE		06209-Jul-28		EXXON MOBIL CORPORATION		2205551823
Date	Time	Treating Pressure	Density	Flow Rate	CMT VOL	CMT TPLX RATE	CMT TPLX VOL	0	Message
	24 hr clock	psi	lb/gal	bbt/min	bbt	bbt/min	bbt	0	
2006-Jul-28	17:41	69	12.34	4.2	5.3	0.0	0.0	0	
2006-Jul-28	17:42	64	12.44	4.1	7.4	0.0	0.0	0	
2006-Jul-28	17:42	-5	12.66	1.5	9.0	0.0	0.0	0	
2006-Jul-28	17:43	-5	12.70	3.0	9.0	0.0	0.0	0	
2006-Jul-28	17:43	5	12.70	3.0	9.0	0.0	0.0	0	
2006-Jul-28	17:44	5	12.71	3.0	9.0	0.0	0.0	0	
2006-Jul-28	17:44	5	12.71	3.0	9.0	0.0	0.0	0	
2006-Jul-28	17:45	5	12.71	3.1	9.0	0.0	0.0	0	
2006-Jul-28	17:45	5	12.71	3.1	9.0	0.0	0.0	0	
2006-Jul-28	17:46	5	12.71	3.1	9.0	0.0	0.0	0	
2006-Jul-28	17:46	73	12.95	4.1	10.8	0.0	0.0	0	
2006-Jul-28	17:47	73	12.76	4.1	12.8	0.0	0.0	0	
2006-Jul-28	17:47	69	12.58	4.0	14.9	0.0	0.0	0	
2006-Jul-28	17:48	96	12.59	4.7	16.9	0.0	0.0	0	
2006-Jul-28	17:48	96	12.47	4.8	19.3	0.0	0.0	0	
2006-Jul-28	17:49	78	12.30	4.6	21.6	0.0	0.0	0	
2006-Jul-28	17:49	9	8.42	0.0	23.2	0.0	0.0	0	
2006-Jul-28	17:50	0	8.63	2.6	23.3	0.0	0.0	0	
2006-Jul-28	17:50	5	8.42	0.0	23.3	0.0	0.0	0	
2006-Jul-28	17:51	5	8.41	0.0	23.3	0.0	0.0	0	
2006-Jul-28	17:51	5	8.41	0.0	23.3	0.0	0.0	0	
2006-Jul-28	17:52	5	8.41	0.0	23.3	0.0	0.0	0	
2006-Jul-28	17:52	5	8.41	0.0	23.3	0.0	0.0	0	
2006-Jul-28	17:53	0	8.41	0.0	23.3	0.0	0.0	0	
2006-Jul-28	17:53	0	8.41	0.0	23.3	0.0	0.0	0	
2006-Jul-28	17:54	82	8.56	0.1	23.3	0.0	0.0	0	
2006-Jul-28	17:54	78	8.57	0.0	23.3	0.0	0.1	0	
2006-Jul-28	17:55	78	8.57	0.0	23.3	0.0	0.2	0	
2006-Jul-28	17:55	78	8.57	0.0	23.3	0.0	0.4	0	
2006-Jul-28	17:56	73	8.31	3.4	23.9	0.0	0.5	0	
2006-Jul-28	17:56	284	8.34	0.0	24.3	0.2	0.8	0	
2006-Jul-28	17:57	3278	8.35	0.0	24.3	0.0	0.8	0	
2006-Jul-28	17:57	3250	8.35	0.0	24.3	0.0	0.8	0	
2006-Jul-28	17:57								Reset Total, Vol = 24.30 bbl
2006-Jul-28	17:57	3250	8.35	0.0	0.0	0.0	0.0	0	
2006-Jul-28	17:57								Pressure Test Lines
2006-Jul-28	17:57								Start Pumping Wash
2006-Jul-28	17:57	3250	8.35	0.0	0.0	0.0	0.0	0	
2006-Jul-28	17:57	3246	8.35	0.0	0.0	0.0	0.0	0	
2006-Jul-28	17:58	5	8.36	0.0	0.0	0.0	0.0	0	
2006-Jul-28	17:58	174	8.35	1.0	0.1	2.5	0.0	0	
2006-Jul-28	17:59	165	8.32	5.0	2.2	5.0	2.3	0	
2006-Jul-28	17:59	156	9.17	5.2	4.3	5.0	4.3	0	
2006-Jul-28	17:59								Reset Total, Vol = 4.26 bbl
2006-Jul-28	17:59	165	9.14	5.1	0.3	5.0	0.3	0	
2006-Jul-28	17:59								End Wash
2006-Jul-28	17:59								Start Mixing Lead Slurry
2006-Jul-28	17:59	174	9.09	5.1	0.5	5.0	0.5	0	
2006-Jul-28	18:00	174	10.66	5.2	3.0	5.0	3.0	0	
2006-Jul-28	18:00	201	12.06	5.2	5.6	5.0	5.5	0	
2006-Jul-28	18:01	206	12.82	5.2	8.3	5.0	8.0	0	
2006-Jul-28	18:01	192	12.82	5.2	10.9	5.0	10.5	0	
2006-Jul-28	18:02	160	12.70	5.2	13.5	5.1	13.1	0	
2006-Jul-28	18:02	160	12.48	5.3	16.1	5.1	15.6	0	

KCC

NOV 10 2006

CONFIDENTIAL

RECEIVED
KANSAS CORPORATION COMMISSION

NOV 13 2006

CONSERVATION DIVISION
WICHITA, KS

Well			Flow		Service Date		Customer		Job Number	
KCPUBLIC FEE UNIT #5-31			CATTLE		06209-Jul28		FXN MOBIL CORPORATION		2205551323	
Date	Time	Testing Pressure	Density	Flow Rate	CMT VOL	CMT TPLX RATE	CMT TPLX VOL	0	Message	
	24 hr clock	psi	lb/gal	bbt/min	bbt	bbt/min	bbt	0		
2006-Jul-28	18:03	137	12.39	5.3	18.7	5.1	18.1	0		
2006-Jul-28	18:03	128	12.49	5.2	21.3	5.1	20.7	0		
2006-Jul-28	18:04	124	12.53	5.3	24.0	5.1	23.3	0		
2006-Jul-28	18:04	105	12.56	5.3	26.7	5.1	25.9	0		
2006-Jul-28	18:05	114	12.42	5.3	29.3	5.1	28.4	0		
2006-Jul-28	18:05	101	12.48	5.2	31.9	5.0	30.9	0		
2006-Jul-28	18:06	110	12.91	5.1	34.5	5.0	33.4	0		
2006-Jul-28	18:06	119	12.74	5.2	37.1	5.0	35.9	0		
2006-Jul-28	18:07	110	12.66	5.1	39.6	5.0	38.4	0		
2006-Jul-28	18:07	110	12.62	5.2	42.2	5.0	40.9	0		
2006-Jul-28	18:08	110	12.59	5.2	44.8	5.0	43.5	0		
2006-Jul-28	18:08	110	12.56	5.2	47.4	5.0	46.0	0		
2006-Jul-28	18:08	114	12.43	5.2	50.0	5.0	48.5	0		
2006-Jul-28	18:09	110	12.36	5.3	52.6	5.1	51.0	0		
2006-Jul-28	18:10	119	12.82	5.2	55.2	5.0	53.5	0		
2006-Jul-28	18:10	110	12.75	5.3	57.8	5.0	56.0	0		
2006-Jul-28	18:11	110	12.54	5.2	60.4	5.0	58.5	0		
2006-Jul-28	18:11	114	12.59	5.3	63.0	5.0	61.1	0		
2006-Jul-28	18:12	133	13.69	5.3	65.4	5.0	63.3	0		
2006-Jul-28	18:12								Reset Total, Vol = 65.42 bbl	
2006-Jul-28	18:12								End Lead Slurry	
2006-Jul-28	18:12	133	13.75	5.3	0.2	5.0	0.2	0		
2006-Jul-28	18:12								Start Mixing Tail Slurry	
2006-Jul-28	18:12	128	13.79	5.3	0.3	5.0	0.3	0		
2006-Jul-28	18:12	156	14.60	5.3	2.9	5.0	2.8	0		
2006-Jul-28	18:13	179	15.03	5.2	5.5	5.0	5.3	0		
2006-Jul-28	18:13	174	15.01	5.2	8.1	5.1	7.8	0		
2006-Jul-28	18:14	174	14.86	5.2	10.7	5.0	10.3	0		
2006-Jul-28	18:14	165	14.78	5.2	13.4	5.1	12.9	0		
2006-Jul-28	18:15	165	14.91	5.2	16.0	5.1	15.4	0		
2006-Jul-28	18:15	179	14.94	5.2	18.6	5.1	18.0	0		
2006-Jul-28	18:16	174	14.92	5.2	21.2	5.0	20.5	0		
2006-Jul-28	18:16	165	14.91	5.2	23.8	5.1	23.0	0		
2006-Jul-28	18:17	174	14.90	5.2	26.4	5.1	25.6	0		
2006-Jul-28	18:17	174	14.88	5.2	29.0	5.1	28.1	0		
2006-Jul-28	18:18	169	14.86	5.2	31.6	5.0	30.6	0		
2006-Jul-28	18:18	169	14.83	5.2	34.2	5.0	33.1	0		
2006-Jul-28	18:19	174	14.83	5.2	36.8	5.1	35.7	0		
2006-Jul-28	18:19	179	14.89	5.2	39.5	5.1	38.2	0		
2006-Jul-28	18:20	179	14.90	5.2	42.0	5.1	40.7	0		
2006-Jul-28	18:20	96	15.06	3.8	44.4	3.7	42.9	0		
2006-Jul-28	18:21	119	15.04	4.3	46.5	3.7	44.7	0		
2006-Jul-28	18:21								Reset Total, Vol = 48.32 bbl	
2006-Jul-28	18:21	-9	14.17	0.1	48.1	0.0	45.9	0		
2006-Jul-28	18:21	-9	14.17	0.0	0.0	0.0	0.0	0		
2006-Jul-28	18:21	-9	14.17	0.0	0.0	0.0	0.0	0		
2006-Jul-28	18:21								End Tail Slurry	
2006-Jul-28	18:21								Drop Top Plug	
2006-Jul-28	18:21								Start Displacement	
2006-Jul-28	18:21	-9	14.17	0.0	0.0	0.0	0.0	0		
2006-Jul-28	18:22	-9	14.04	0.0	0.0	0.0	0.0	0		
2006-Jul-28	18:22	5	13.40	0.0	0.0	0.0	0.0	0		
2006-Jul-28	18:23	78	9.35	2.8	0.0	0.0	0.0	0		
2006-Jul-28	18:23	73	8.92	3.2	0.0	0.0	0.0	0		

KCC
 NOV 10 2006
CONFIDENTIAL

RECEIVED
 KANSAS CORPORATION COMMISSION
 NOV 13 2006

Well		Fix		Service Date		Customer		Job Number	
KCPUBLIC FEF UNIT #5-31				08209-Jul-28		EXXON MOBIL CORPORATION		2205551323	
Date	Time	Treating Pressure	Density	CATTLE		CMT YPLX RATE		0	Message
				Flow Rate	CMT VOL	CMT YPLX RATE	CMT TPLX VOL		
	24 hr clock	psi	lb/gal	bbl/min	bbl	bbl/min	bbl	0	
2006-Jul-28	18:24	69	8.64	3.3	0.0	0.0	0.0	0	
2006-Jul-28	18:24	55	8.51	3.1	0.0	0.0	0.0	0	
2006-Jul-28	18:25	55	8.50	3.0	0.0	0.0	0.0	0	
2006-Jul-28	18:25	55	8.47	3.0	0.0	0.0	0.0	0	
2006-Jul-28	18:26	69	8.38	3.0	0.0	0.0	0.0	0	
2006-Jul-28	18:26	69	8.38	3.6	0.0	0.5	0.0	0	
2006-Jul-28	18:27	105	7.20	6.1	0.0	5.4	2.5	0	
2006-Jul-28	18:27	5	8.32	0.2	0.0	0.0	3.1	0	
2006-Jul-28	18:28	5	8.33	0.0	0.0	0.0	3.1	0	
2006-Jul-28	18:28	-5	8.33	0.0	0.0	0.0	3.1	0	
2006-Jul-28	18:29	69	8.32	5.3	1.4	4.3	4.1	0	
2006-Jul-28	18:29	69	8.32	5.3	4.1	4.3	6.3	0	
2006-Jul-28	18:30	69	8.33	5.3	6.7	4.3	8.4	0	
2006-Jul-28	18:30	69	8.32	5.3	9.4	4.3	10.6	0	
2006-Jul-28	18:31	69	8.32	5.3	12.1	4.3	12.7	0	
2006-Jul-28	18:31	69	8.32	5.3	14.7	4.3	14.9	0	
2006-Jul-28	18:32	69	8.32	5.3	17.4	4.3	17.1	0	
2006-Jul-28	18:32	69	8.32	5.5	20.1	4.3	19.2	0	
2006-Jul-28	18:33	69	8.32	5.6	22.9	4.3	21.4	0	
2006-Jul-28	18:33	69	8.32	5.6	25.7	4.3	23.6	0	
2006-Jul-28	18:34	142	8.32	4.0	28.1	4.3	25.8	0	
2006-Jul-28	18:34	156	8.32	4.3	30.2	4.3	27.9	0	
2006-Jul-28	18:35	270	8.32	4.7	32.5	5.5	30.3	0	
2006-Jul-28	18:35	298	8.32	5.7	35.2	5.6	33.0	0	
2006-Jul-28	18:36	343	8.32	5.6	38.0	5.5	35.8	0	
2006-Jul-28	18:36	421	8.32	5.6	40.8	5.5	38.6	0	
2006-Jul-28	18:37	485	8.31	5.6	43.6	5.5	41.3	0	
2006-Jul-28	18:37	558	8.31	5.6	46.4	5.5	44.1	0	
2006-Jul-28	18:38	600	8.31	5.6	49.3	5.5	46.9	0	
2006-Jul-28	18:38	677	8.31	5.6	52.1	5.5	49.7	0	
2006-Jul-28	18:39	714	8.31	5.5	54.9	5.4	52.4	0	
2006-Jul-28	18:39	751	8.31	5.3	57.6	5.2	55.1	0	
2006-Jul-28	18:40	810	8.31	5.1	60.1	5.0	57.6	0	
2006-Jul-28	18:40	856	8.31	5.0	62.6	4.9	60.1	0	
2006-Jul-28	18:41	906	8.31	5.0	65.1	4.9	62.5	0	
2006-Jul-28	18:41	806	8.31	3.2	67.4	2.5	64.7	0	
2006-Jul-28	18:42	856	8.31	2.5	68.7	2.4	65.9	0	
2006-Jul-28	18:42	911	8.31	2.5	69.9	2.4	67.1	0	
2006-Jul-28	18:43	934	8.31	2.4	71.1	2.4	68.3	0	
2006-Jul-28	18:43	981	8.31	2.4	72.3	2.4	69.5	0	
2006-Jul-28	18:44	1002	8.31	2.4	73.6	2.4	70.7	0	
2006-Jul-28	18:44	1007	8.31	2.4	74.8	2.4	71.9	0	
2006-Jul-28	18:45	1570	8.32	0.0	75.8	0.0	72.8	0	
2006-Jul-28	18:45	1602	8.32	0.0	75.8	0.0	72.8	0	
2006-Jul-28	18:45	1620	8.32	0.0	75.8	0.0	72.8	0	
2006-Jul-28	18:45								Reset Total, Vol = 75.74 bbl
2006-Jul-28	18:45								Bump Top Plug
2006-Jul-28	18:45	1593	8.32	0.0	0.0	0.0	0.0	0	End Displacement
2006-Jul-28	18:45	1593	8.32	0.0	0.0	0.0	0.0	0	
2006-Jul-28	18:46	1611	8.32	0.0	0.0	0.0	0.0	0	
2006-Jul-28	18:46	1607	8.32	0.0	0.0	0.0	0.0	0	
2006-Jul-28	18:47	1607	8.32	0.0	0.0	0.0	0.0	0	
2006-Jul-28	18:47	1607	8.32	0.0	0.0	0.0	0.0	0	

KCC
NOV 10 2006
CONFIDENTIAL

RECEIVED
KANSAS CORPORATION COMMISSION

Well		P...		Service Date		Customer		Job Number	
REPUBLIC FEE UNIT #0-31		CATTLE		06/28-Jul-28		EXXON MOBIL CORPORATION		2206551223	
Date	Time	Treating Pressure	Density	Flow Rate	CMT VOL	CMT TPLX RATE	CMT TPLX VOL	0	Message
	24 hr clock	psi	lb/gal	bbbl/min	bbbl	bbbl/min	bbbl	0	
2006-Jul-28	18:48	1611	8.32	0.0	0.0	0.0	0.0	0	
2006-Jul-28	18:48	1611	8.31	0.0	0.0	0.0	0.0	0	
2006-Jul-28	18:49	1611	8.31	0.0	0.0	0.0	0.0	0	
2006-Jul-28	18:49	1616	8.31	0.0	0.0	0.0	0.0	0	
2006-Jul-28	18:50	1607	8.31	0.0	0.0	0.0	0.0	0	
2006-Jul-28	18:50	-5	8.31	0.0	0.0	0.0	0.0	0	
2006-Jul-28	18:51	-5	8.31	0.0	0.0	0.0	0.0	0	
2006-Jul-28	18:51	-5	8.32	0.0	0.0	0.0	0.0	0	
2006-Jul-28	18:52	69	8.32	3.3	0.0	0.0	0.0	0	
2006-Jul-28	18:52	69	8.31	3.3	0.0	0.0	0.0	0	
2006-Jul-28	18:53	60	8.26	3.3	0.0	0.0	0.0	0	
2006-Jul-28	18:53	5	4.91	0.0	0.0	0.0	0.0	0	
2006-Jul-28	18:54	9	0.41	2.6	0.0	11.4	3.8	0	
2006-Jul-28	18:54	5	0.02	0.0	0.0	0.0	5.5	0	
2006-Jul-28	18:55	0	0.01	0.0	0.0	0.0	5.5	0	
2006-Jul-28	18:55	5	0.01	0.0	0.0	0.0	5.5	0	
2006-Jul-28	18:56	0	0.01	0.0	0.0	0.0	5.5	0	
2006-Jul-28	18:56	0	0.01	0.0	0.0	0.0	5.5	0	
2006-Jul-28	18:57	0	0.01	0.0	0.0	0.0	5.5	0	

Post Job Summary									
Average Pump Rates, bpm					Volume of Fluid Injected, bbl				
Slurry	N2	Mud	Maximum Rate	Total Slurry	Mud	Spacer	N2		
4			5.5	113		5			
Treating Pressure Summary, psi					Breakdown Fluid				
Maximum	Final	Average	Bump Plug to	Breakdown	Volume		Density		
1000		400	1500				8.43 lb/gal		
Avg. N2 Percent		Designed Slurry Volume		Displacement	Mix Water Temp	<input type="checkbox"/> Cement Circulated to Surface?		Volume	
%		114 bbl		75 bbl	75 °F	<input type="checkbox"/> Washed Thru Ports		To ft	
Customer or Authorized Representative				Schlumberger Supervisor			<input type="checkbox"/> Circulation Lost		<input checked="" type="checkbox"/> Job Completed
Clow, Dan				Grigoriev, Valeriy					

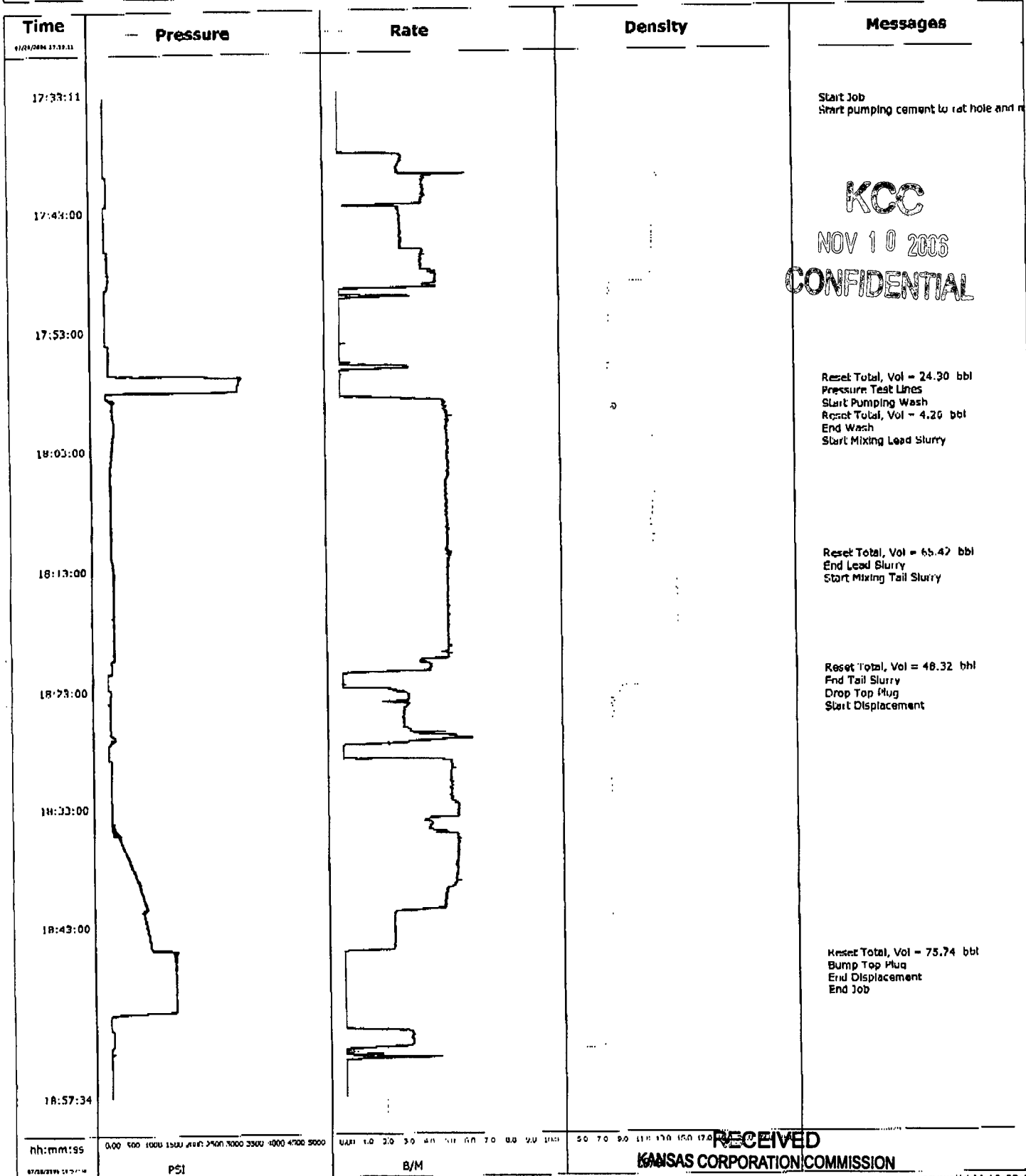
KCC
NOV 10 2006
CONFIDENTIAL

RECEIVED
KANSAS CORPORATION COMMISSION
NOV 13 2006
CONSERVATION DIVISION
WICHITA, KS



Cementing Job Report

Well	Republic Fee Unit 5-31	Client	Exxon Mobil
Field	Hugoton	SIR No.	2205551323
Engineer	Val Grigoriev	Job Type	5 1/2" LS
Country	United States	Job Date	07-28-2006



NOV 13 2006

CONSERVATION DIVISION
WICHITA, KS



Cementing Service Report

Well		Customer EXXON MOBIL CORPORATION			Job Number 2205551459			
Field Republic Fee 5-31		Location (Legal) Perryton, TX			Schlumberger Location Perryton, TX			
County Stevens		Formation Name/Type Dirty-Sandstone			Well TVD 630 ft		Job Start 2006-Jul-25	
Well Master: 0630812293		API UWI:			Casing/Liner		Well TVD 630 ft	
Rig Name PIONEER #49		Drilled For Oil & Gas		Service Via Land		Depth, ft 622	Size, in 8.625	
Offshore Zone		Well Class New		Well Type Exploration		Weight, lb/ft 32	Grade K55	
Drilling Fluid Type Bentonite		Max. Density 9 lb/gal		Plastic Viscosity 20 cp		Thread 8RD	Bore Press. Gradient psi/ft	
Service Line Cementing		Job Type Cem Surface Casing		Perforations/Open Hole				
Max. Allowed Tubing Pressure 1000 psi		Max. Allowed Ann. Pressure psi		Wellhead Connection 8 5/8" H&SM		Top, ft	Bottom, ft	
Service Instructions Cement 8 5/8" Surface Casing 275 SKS 35/65 Poz:C + 6%D20 + 2%S1 + 0.125 pps D130 195 SKS Class C + 2%S1 + 0.125 pps D130 Displace with Fresh Water Top out Cement 150 SKS. TAKE 1" SWADGE FOR TOP OUT.		Top, ft	Bottom, ft	spf	No. of Shots	Total Interval ft		
		Diameter in	Treat Down Casing	Displacement 34.5 bbl	Packer Type	Packer Depth ft		
		Tubing Vol. bbl	Casing Vol. 40 bbl	Annular Vol. 48 bbl	Open Hole Vol. 97 bbl			
		Casing/Tubing Secured <input checked="" type="checkbox"/>	1 Hole Volume Circulated prior to Cementing <input checked="" type="checkbox"/>	Casing Tools		Squeeze Job		
Lift Pressure: 300 psi		Pipe Rotated <input type="checkbox"/>		Pipe Reciprocated <input type="checkbox"/>		Shoe Type: Guide	Squeeze Type	
No. Centralizers: 8		Top Plugs: 1		Bottom Plugs: 0		Shoe Depth: 622 ft	Tool Type:	
Cement Head Type: Double		Job Scheduled For: 2006-Jul-25 15:00		Arrived on Location: 2006-Jul-25 15:00		Stage Tool Type:	Tool Depth: ft	
		Leave Location: 2006-Jul-25 19:00				Stage Tool Depth: ft	Tail Pipe Size: in	
						Collar Type: Float	Tail Pipe Depth: ft	
						Collar Depth: 580 ft	Sqz Total Vol: bbl	

KOC
NOV 10 2006
CONFIDENTIAL

RECEIVED
KANSAS CORPORATION COMMISSION
NOV 13 2006
CONSERVATION DIVISION
WICHITA, KS

Well		Field			Service Date		Customer		Job Number
Republic Fee #5-31					06206-Jul-25		EXXON MOBIL CORPORATION		2205531439
Date	Time	Treating Pressure	Density	Flow Rate	CMT VOL	CMT TPLX RATE	CMT TPLX VOL	0	Message
	24 hr clock	psi	lb/gal	bbt/min	bbt	bbt/min	bbt	0	
2006-Jul-25	16:30	5	8.31	4.7	9.8	4.6	7.0	0	
2006-Jul-25	16:30	14	8.29	5.1	12.3	5.0	9.5	0	
2006-Jul-25	16:31	9	8.31	5.0	13.6	5.0	10.7	0	
2006-Jul-25	16:31								Reset Total, Vol = 12.39 bbl
2006-Jul-25	16:31	5	8.31	5.0	13.6	5.0	10.8	0	
2006-Jul-25	16:31								End Spacer
2006-Jul-25	16:31	9	8.31	5.0	13.9	5.0	11.0	0	
2006-Jul-25	16:31								Start Mixing Lead Slurry
2006-Jul-25	16:31	14	8.73	5.0	0.3	4.9	0.3	0	
2006-Jul-25	16:31	46	9.99	5.0	2.5	4.9	2.8	0	
2006-Jul-25	16:32	64	11.22	4.8	5.0	4.9	5.3	0	
2006-Jul-25	16:32	78	11.89	5.1	7.4	4.9	7.7	0	
2006-Jul-25	16:33	92	12.49	4.8	9.9	4.9	10.2	0	
2006-Jul-25	16:33	87	12.58	4.9	12.4	4.9	12.6	0	
2006-Jul-25	16:34	82	12.43	5.0	14.9	4.9	15.1	0	
2006-Jul-25	16:34	78	12.38	5.1	17.4	5.0	17.6	0	
2006-Jul-25	16:35	78	12.40	5.0	19.9	5.0	20.1	0	
2006-Jul-25	16:35	82	12.47	5.0	22.4	5.0	22.5	0	
2006-Jul-25	16:36	82	12.39	5.1	24.9	5.0	25.0	0	
2006-Jul-25	16:36	82	12.46	5.0	27.4	5.0	27.5	0	
2006-Jul-25	16:37	82	12.50	5.0	29.9	5.0	30.0	0	
2006-Jul-25	16:37	96	12.45	5.0	32.5	5.0	32.5	0	
2006-Jul-25	16:38	82	12.29	5.0	35.0	5.0	35.0	0	
2006-Jul-25	16:38	78	12.16	5.0	37.6	5.0	37.6	0	
2006-Jul-25	16:39	82	12.17	5.0	40.1	5.0	40.1	0	
2006-Jul-25	16:39	82	12.48	5.0	42.6	5.0	42.6	0	
2006-Jul-25	16:40	82	12.40	5.1	45.2	5.0	45.1	0	
2006-Jul-25	16:40	82	12.24	5.0	47.7	5.0	47.6	0	
2006-Jul-25	16:41	82	12.19	5.2	50.2	5.0	50.1	0	
2006-Jul-25	16:41	82	12.30	5.0	52.7	5.0	52.6	0	
2006-Jul-25	16:42	82	12.42	5.1	55.3	5.0	55.1	0	
2006-Jul-25	16:42	82	12.45	5.0	57.8	5.0	57.6	0	
2006-Jul-25	16:43	82	12.42	5.1	60.3	5.0	60.1	0	
2006-Jul-25	16:43	82	12.40	5.1	62.8	5.0	62.6	0	
2006-Jul-25	16:44	87	12.46	5.1	65.4	5.0	65.1	0	
2006-Jul-25	16:44	87	12.50	5.1	67.9	5.0	67.6	0	
2006-Jul-25	16:45	82	12.30	5.0	70.5	5.0	70.2	0	
2006-Jul-25	16:45	82	12.22	5.1	73.0	5.0	72.7	0	
2006-Jul-25	16:46	82	12.33	5.1	75.5	5.0	75.2	0	
2006-Jul-25	16:46	87	12.63	5.1	78.1	5.0	77.7	0	
2006-Jul-25	16:47	82	12.46	5.2	80.6	5.0	80.2	0	
2006-Jul-25	16:47	87	12.41	5.1	83.1	5.0	82.7	0	
2006-Jul-25	16:48	82	12.34	5.1	85.7	5.0	85.3	0	
2006-Jul-25	16:48	87	12.39	5.1	88.2	5.1	87.8	0	
2006-Jul-25	16:49	92	12.50	5.1	90.8	5.1	90.4	0	
2006-Jul-25	16:49	82	11.95	5.1	93.4	5.0	92.9	0	
2006-Jul-25	16:50	92	12.52	5.1	95.9	5.1	95.4	0	
2006-Jul-25	16:50	87	12.00	5.1	98.5	5.0	98.0	0	
2006-Jul-25	16:51								Reset Total, Vol = 100 bbl
2006-Jul-25	16:51	87	12.16	5.1	99.9	5.0	99.4	0	
2006-Jul-25	16:51	92	12.66	5.1	0.4	5.0	0.4	0	
2006-Jul-25	16:51								End Lead Slurry
2006-Jul-25	16:51	92	12.69	5.1	0.5	5.0	0.5	0	
2006-Jul-25	16:51	96	12.82	5.1	0.8	5.0	0.8	0	

KCC

NOV 1 9 2006

CONFIDENTIAL

**RECEIVED
KANSAS CORPORATION COMMISSION**

NOV 1 3 2006

**CONSERVATION DIVISION
WICHITA, KS**

Well		Field		Service Date		Customer		Job Number	
Republic Fee #3-31				06206-Jul-25		EXXON MOBIL CORPORATION		2203651459	
Date	Time	Treating Pressure 24 hr clock psi	Density lb/gal	Flow Rate bbl/min	CMT VOL bbl	CMT TPLX RATE bbl/min	CMT TPLX VOL bbl	0	Message
2006-Jul-25	16:51							0	Start Mixing Tail Slurry
2006-Jul-25	16:51	101	13.39	5.0	3.0	5.0	3.0	0	
2006-Jul-25	16:52	105	13.92	5.1	5.6	5.0	5.5	0	
2006-Jul-25	16:52	114	14.37	5.1	8.1	5.0	8.0	0	
2006-Jul-25	16:53	124	14.75	5.0	10.6	5.0	10.5	0	
2006-Jul-25	16:53	114	14.48	5.0	13.1	5.0	13.0	0	
2006-Jul-25	16:54	114	14.65	5.1	15.6	5.0	15.5	0	
2006-Jul-25	16:54	114	14.43	5.1	18.2	5.0	18.0	0	
2006-Jul-25	16:55	114	14.67	5.1	20.7	5.0	20.5	0	
2006-Jul-25	16:55	119	14.84	5.1	23.2	6.0	23.0	0	
2006-Jul-25	16:56	119	14.74	5.1	25.8	5.0	25.5	0	
2006-Jul-25	16:56	119	14.78	5.1	28.4	5.0	28.0	0	
2006-Jul-25	16:57	119	14.91	5.2	30.9	5.0	30.5	0	
2006-Jul-25	16:57	119	14.82	5.0	33.4	5.0	33.0	0	
2006-Jul-25	16:58	114	14.82	5.0	35.9	5.0	35.5	0	
2006-Jul-25	16:58	124	15.07	5.1	38.5	5.0	38.0	0	
2006-Jul-25	16:59	114	14.51	5.2	41.0	5.0	40.5	0	
2006-Jul-25	16:59	119	14.70	5.1	43.6	5.1	43.1	0	
2006-Jul-25	17:00	124	14.79	5.1	46.1	5.0	45.6	0	
2006-Jul-25	17:00	87	14.79	4.3	48.7	1.4	47.7	0	
2006-Jul-25	17:01	5	14.72	0.1	49.9	0.0	48.2	0	
2006-Jul-25	17:01								Reset Total, Vol = 49.93 bbl
2006-Jul-25	17:01								Drop Top Plug
2006-Jul-25	17:01	5	14.72	0.0	0.0	0.0	0.0	0	
2006-Jul-25	17:01								End Tail Slurry
2006-Jul-25	17:01	5	14.69	0.0	0.0	0.0	0.0	0	
2006-Jul-25	17:01								Start Displacement
2006-Jul-25	17:01	5	14.60	0.0	0.0	0.0	0.0	0	
2006-Jul-25	17:01	5	12.12	0.0	0.0	0.0	0.0	0	
2006-Jul-25	17:02	5	10.67	0.0	0.0	0.0	0.0	0	
2006-Jul-25	17:02	5	10.37	0.0	0.0	0.0	0.0	0	
2006-Jul-25	17:03	5	10.15	0.0	0.0	0.0	0.0	0	
2006-Jul-25	17:03	5	9.95	0.0	0.0	0.0	0.0	0	
2006-Jul-25	17:04	50	8.97	3.1	0.3	1.9	0.0	0	
2006-Jul-25	17:04	27	8.81	4.6	2.6	4.6	2.3	0	
2006-Jul-25	17:05	27	8.67	4.8	5.0	4.6	4.8	0	
2006-Jul-25	17:05	46	8.31	4.8	7.4	4.6	6.9	0	
2006-Jul-25	17:06	64	8.31	4.7	9.8	4.6	9.2	0	
2006-Jul-25	17:06	60	8.45	4.7	12.1	4.6	11.6	0	
2006-Jul-25	17:07	64	8.46	4.7	14.5	4.6	13.9	0	
2006-Jul-25	17:07	64	8.31	4.7	16.8	4.6	16.2	0	
2006-Jul-25	17:08	78	8.31	4.7	19.1	4.6	18.5	0	
2006-Jul-25	17:08	87	8.34	4.7	21.5	4.6	20.8	0	
2006-Jul-25	17:09	96	8.34	4.7	23.8	4.6	23.1	0	
2006-Jul-25	17:09	114	8.32	4.7	26.1	4.6	25.4	0	
2006-Jul-25	17:10	146	8.31	2.3	27.8	2.3	27.0	0	
2006-Jul-25	17:10	169	8.31	2.3	29.0	2.2	28.1	0	
2006-Jul-25	17:11	169	8.31	2.2	30.1	2.2	29.2	0	
2006-Jul-25	17:11	169	8.31	2.3	31.2	2.2	30.3	0	
2006-Jul-25	17:12	192	8.32	2.2	32.4	2.2	31.5	0	
2006-Jul-25	17:12	188	8.31	2.2	33.5	2.2	32.6	0	
2006-Jul-25	17:13	183	8.31	2.2	34.6	2.2	33.7	0	
2006-Jul-25	17:13	1002	8.31	0.0	35.5	0.0	34.5	0	
2006-Jul-25	17:14	993	8.31	0.0	35.5	0.0	34.5	0	

KCC

NOV 1 9 2006

CONFIDENTIAL

RECEIVED
KANSAS CORPORATION COMMISSION

NOV 13 2006

CONSERVATION DIVISION
WICHITA, KS

Well		Field			Service Date		Customer		Job Number
Republic, Inc #5-31					06/20/06-Jul-25		EXXON MOBIL CORPORATION		2205551459
Date	Time	Yeasting Pressure	Density	Flow Rate	CMT VOL	CMT TPLX RATE	CMT TPLX VOL	0	Message
	24 hr clock	psi	lb/gal	bbbl/min	bbbl	bbbl/min	bbbl	0	
2006-Jul-25	17:14								End Displacement
2006-Jul-25	17:14	989	8.31	0.0	35.5	0.0	34.5	0	
2006-Jul-25	17:14	989	8.31	0.0	35.5	0.0	34.5	0	
2006-Jul-25	17:14								Reset Total, Vol = 35.50 bbl
2006-Jul-25	17:14								Bump Top Plug
2006-Jul-25	17:14	989	8.31	0.0	0.0	0.0	0.0	0	
2006-Jul-25	17:14	861	8.31	0.0	0.0	0.0	0.0	0	
2006-Jul-25	17:15	14	8.31	0.0	0.0	0.0	0.0	0	
2006-Jul-25	17:15								Float held
2006-Jul-25	17:15	14	8.31	0.0	0.0	0.0	0.0	0	
2006-Jul-25	17:15	14	8.31	0.0	0.0	0.0	0.0	0	
2006-Jul-25	17:16								Pressure Test Casing
2006-Jul-25	17:16	14	8.31	0.0	0.0	0.0	0.0	0	
2006-Jul-25	17:16	18	8.31	0.0	0.0	0.0	0.0	0	
2006-Jul-25	17:16	426	8.31	0.1	0.1	0.0	0.1	0	
2006-Jul-25	17:17	421	8.31	0.0	0.1	0.0	0.1	0	
2006-Jul-25	17:17	421	8.31	0.0	0.1	0.0	0.1	0	
2006-Jul-25	17:18	426	8.31	0.0	0.1	0.0	0.1	0	
2006-Jul-25	17:18	426	8.31	0.0	0.1	0.0	0.1	0	
2006-Jul-25	17:19	426	8.31	0.0	0.1	0.0	0.1	0	
2006-Jul-25	17:19	430	8.31	0.0	0.1	0.0	0.1	0	
2006-Jul-25	17:20	430	8.31	0.0	0.1	0.0	0.1	0	
2006-Jul-25	17:20	430	8.31	0.0	0.1	0.0	0.1	0	
2006-Jul-25	17:21	435	8.31	0.0	0.1	0.0	0.1	0	
2006-Jul-25	17:21	435	8.31	0.0	0.1	0.0	0.1	0	
2006-Jul-25	17:22	435	8.31	0.0	0.1	0.0	0.1	0	
2006-Jul-25	17:22	439	8.31	0.0	0.1	0.0	0.1	0	
2006-Jul-25	17:23	439	8.31	0.0	0.1	0.0	0.1	0	
2006-Jul-25	17:23	439	8.31	0.0	0.1	0.0	0.1	0	
2006-Jul-25	17:24	439	8.31	0.0	0.1	0.0	0.1	0	
2006-Jul-25	17:24	439	8.31	0.0	0.1	0.0	0.1	0	
2006-Jul-25	17:25	444	8.31	0.0	0.1	0.0	0.1	0	
2006-Jul-25	17:25	444	8.31	0.0	0.1	0.0	0.1	0	
2006-Jul-25	17:26	444	8.30	0.0	0.1	0.0	0.1	0	
2006-Jul-25	17:26	444	8.31	0.0	0.1	0.0	0.1	0	
2006-Jul-25	17:27	444	8.30	0.0	0.1	0.0	0.1	0	
2006-Jul-25	17:27	449	8.31	0.0	0.1	0.0	0.1	0	
2006-Jul-25	17:28	449	8.30	0.0	0.1	0.0	0.1	0	
2006-Jul-25	17:28	449	8.30	0.0	0.1	0.0	0.1	0	
2006-Jul-25	17:29	449	8.30	0.0	0.1	0.0	0.1	0	
2006-Jul-25	17:29	449	8.30	0.0	0.1	0.0	0.1	0	
2006-Jul-25	17:30	449	8.30	0.0	0.1	0.0	0.1	0	
2006-Jul-25	17:30	449	8.30	0.0	0.1	0.0	0.1	0	
2006-Jul-25	17:31	449	8.30	0.0	0.1	0.0	0.1	0	
2006-Jul-25	17:31	453	8.30	0.0	0.1	0.0	0.1	0	
2006-Jul-25	17:32	453	8.30	0.0	0.1	0.0	0.1	0	
2006-Jul-25	17:32	453	8.30	0.0	0.1	0.0	0.1	0	
2006-Jul-25	17:33	453	8.30	0.0	0.1	0.0	0.1	0	
2006-Jul-25	17:33	453	8.30	0.0	0.1	0.0	0.1	0	
2006-Jul-25	17:34	453	8.30	0.0	0.1	0.0	0.1	0	
2006-Jul-25	17:34	453	8.30	0.0	0.1	0.0	0.1	0	
2006-Jul-25	17:35	453	8.30	0.0	0.1	0.0	0.1	0	
2006-Jul-25	17:35	453	8.30	0.0	0.1	0.0	0.1	0	
2006-Jul-25	17:36	453	8.30	0.0	0.1	0.0	0.1	0	

KCC

NOV 10 2006

CONFIDENTIAL

RECEIVED
KANSAS CORPORATION COMMISSION

NOV 13 2006

CONSERVATION DIVISION
WICHITA, KS

Well		Field			Service Date		Customer		Job Number
Republic Fee #3-31					06206-Jul-25		EXXON MOBIL CORPORATION		2205951459
Date	Time	Treating Pressure	Density	Flow Rate	CMT VOL	CMT TPLX RATE	CMT TPLX VOL	0	Message
	24 hr clock	psi	lb/gal	bb/min	bbbl	bb/min	bbbl	0	
2006-Jul-25	17:36	453	8.30	0.0	0.1	0.0	0.1	0	
2006-Jul-25	17:37	458	8.30	0.0	0.1	0.0	0.1	0	
2006-Jul-25	17:37	458	8.30	0.0	0.1	0.0	0.1	0	
2006-Jul-25	17:38	458	8.30	0.0	0.1	0.0	0.1	0	
2006-Jul-25	17:38	458	8.30	0.0	0.1	0.0	0.1	0	
2006-Jul-25	17:39	458	8.30	0.0	0.1	0.0	0.1	0	
2006-Jul-25	17:39	73	8.30	0.0	0.1	0.0	0.1	0	
2006-Jul-25	17:40	14	8.30	0.0	0.1	0.0	0.1	0	
2006-Jul-25	17:40	14	8.30	0.0	0.1	0.0	0.1	0	
2006-Jul-25	17:41	14	8.30	0.0	0.1	0.0	0.1	0	
2006-Jul-25	17:41	14	8.30	0.0	0.1	0.0	0.1	0	
2006-Jul-25	17:42	14	8.29	0.0	0.1	0.0	0.1	0	
2006-Jul-25	17:42	14	8.29	0.0	0.1	0.0	0.1	0	
2006-Jul-25	17:43	14	8.28	1.3	0.1	0.0	0.1	0	
2006-Jul-25	17:43	14	8.30	0.3	0.2	0.0	0.1	0	
2006-Jul-25	17:44	14	8.31	0.2	0.9	0.0	0.1	0	
2006-Jul-25	17:44	14	8.32	0.1	0.9	0.0	0.1	0	
2006-Jul-25	17:45	14	8.32	0.1	0.9	0.0	0.1	0	
2006-Jul-25	17:45	14	8.31	0.0	0.9	0.0	0.1	0	
2006-Jul-25	17:46	14	8.31	0.1	0.9	0.0	0.1	0	
2006-Jul-25	17:46	14	8.30	0.0	0.9	0.0	0.1	0	
2006-Jul-25	17:47	14	8.30	0.1	0.9	0.0	0.1	0	
2006-Jul-25	17:47	14	8.30	0.0	0.9	0.0	0.1	0	
2006-Jul-25	17:48	14	8.30	0.1	0.9	0.0	0.1	0	
2006-Jul-25	17:48	14	8.30	0.0	0.9	0.0	0.1	0	
2006-Jul-25	17:49	14	8.30	0.0	0.9	0.0	0.1	0	
2006-Jul-25	17:49	14	8.30	0.0	0.9	0.0	0.1	0	
2006-Jul-25	17:50	14	8.30	0.0	0.9	0.0	0.1	0	
2006-Jul-25	17:50	14	8.30	0.0	0.9	0.0	0.1	0	
2006-Jul-25	17:51	9	8.30	0.0	0.9	0.0	0.1	0	
2006-Jul-25	17:51	14	8.30	0.0	0.9	0.0	0.1	0	
2006-Jul-25	17:52	14	8.30	0.0	0.9	0.0	0.1	0	
2006-Jul-25	17:52	14	8.29	0.0	0.9	0.0	0.1	0	
2006-Jul-25	17:53	14	8.29	0.0	0.9	0.0	0.1	0	
2006-Jul-25	17:53	14	8.29	0.0	0.9	0.0	0.1	0	
2006-Jul-25	17:54	14	8.29	0.0	0.9	0.0	0.1	0	
2006-Jul-25	17:54	14	8.29	0.0	0.9	0.0	0.1	0	
2006-Jul-25	17:55	9	8.29	0.0	0.9	0.0	0.1	0	
2006-Jul-25	17:55	9	8.29	0.0	0.9	0.0	0.1	0	
2006-Jul-25	17:56	9	8.29	0.0	0.9	0.0	0.1	0	
2006-Jul-25	17:56	9	8.29	0.0	0.9	0.0	0.1	0	
2006-Jul-25	17:57	9	8.29	0.0	0.9	0.0	0.1	0	
2006-Jul-25	17:57	9	8.29	0.0	0.9	0.0	0.1	0	
2006-Jul-25	17:58	14	8.29	0.0	0.9	0.0	0.1	0	
2006-Jul-25	17:58	9	8.29	0.0	0.9	0.0	0.1	0	
2006-Jul-25	17:59	9	8.29	0.0	0.9	0.0	0.1	0	
2006-Jul-25	17:59	9	8.29	0.0	0.9	0.0	0.1	0	
2006-Jul-25	18:00	9	8.29	0.0	0.9	0.0	0.1	0	
2006-Jul-25	18:00	9	8.29	0.0	0.9	0.0	0.1	0	
2006-Jul-25	18:01	9	8.29	0.0	0.9	0.0	0.1	0	
2006-Jul-25	18:01	9	8.29	0.0	0.9	0.0	0.1	0	
2006-Jul-25	18:02	14	8.29	0.0	0.9	0.0	0.1	0	
2006-Jul-25	18:02	14	8.29	0.0	0.9	0.0	0.1	0	
2006-Jul-25	18:03	14	8.29	0.0	0.9	0.0	0.1	0	

KCC

NOV 10 2006

CONFIDENTIAL

RECEIVED
KANSAS CORPORATION COMMISSION

NOV 13 2006

CONSERVATION DIVISION
WICHITA, KS

Well		Field			Service Date		Customer		Job Number	
Republic Fee #8-31					06/208-Jul-26		EXXON MOBIL CORPORATION		2205551459	
Date	Time	Treating Pressure	Density	Flow Rate	CMT VOL	CMT TPLX RATE	CMT TPLX VOL	0	Message	
	24 hr clock	psi	lb/gal	bbbl/min	bbbl	bbbl/min	bbbl	0		
2006-Jul-25	18:03	14	8.29	0.0	0.9	0.0	0.1	0		
2006-Jul-25	18:04	14	8.29	0.0	0.9	0.0	0.1	0		
2006-Jul-25	18:04	14	8.29	0.0	0.9	0.0	0.1	0		
2006-Jul-25	18:05	14	8.29	0.0	0.9	0.0	0.1	0		
2006-Jul-25	18:05	14	8.29	0.0	0.9	0.0	0.1	0		
2006-Jul-25	18:06	14	8.29	0.0	0.9	0.0	0.1	0		
2006-Jul-25	18:06	14	8.29	0.0	0.9	0.0	0.1	0		
2006-Jul-25	18:06								Pressure test successful	
2006-Jul-25	18:06								Start Top out	
2006-Jul-25	18:06	14	8.29	0.0	0.0	0.0	0.0	0		
2006-Jul-25	18:06	14	8.30	0.0	0.0	0.0	0.0	0		
2006-Jul-25	18:07	14	8.30	0.1	0.0	0.0	0.0	0		
2006-Jul-25	18:07	14	8.30	0.0	0.0	0.0	0.0	0		
2006-Jul-25	18:08	60	8.30	1.7	0.0	0.0	0.0	0		
2006-Jul-25	18:08	9	8.18	4.7	0.0	0.0	0.0	0		
2006-Jul-25	18:09	9	8.54	4.9	0.0	0.0	0.0	0		
2006-Jul-25	18:09	9	8.54	4.9	0.0	0.0	0.0	0		
2006-Jul-25	18:10	9	9.45	4.7	0.0	0.0	0.0	0		
2006-Jul-25	18:10	9	12.70	4.6	0.0	0.0	0.0	0		
2006-Jul-25	18:11	9	14.80	4.8	0.0	0.0	0.0	0		
2006-Jul-25	18:11	9	15.84	4.8	0.0	0.0	0.0	0		
2006-Jul-25	18:12	78	14.47	1.9	0.0	0.0	0.0	0		
2006-Jul-25	18:12	87	15.21	1.5	0.1	0.0	0.0	0		
2006-Jul-25	18:13	87	15.90	1.3	0.8	0.0	0.0	0		
2006-Jul-25	18:13	87	15.65	1.2	1.4	0.0	0.0	0		
2006-Jul-25	18:14	87	15.82	1.2	2.0	0.0	0.0	0		
2006-Jul-25	18:14	87	15.78	1.2	2.6	0.0	0.0	0		
2006-Jul-25	18:15	87	15.77	1.2	3.3	0.0	0.0	0		
2006-Jul-25	18:15	82	15.77	1.2	3.9	0.0	0.0	0		
2006-Jul-25	18:16	82	15.76	1.2	4.5	0.0	0.0	0		
2006-Jul-25	18:16	101	15.75	1.5	5.1	0.0	0.0	0		
2006-Jul-25	18:17	101	15.75	1.5	5.9	0.0	0.0	0		
2006-Jul-25	18:17	101	15.75	1.5	6.6	0.0	0.0	0		
2006-Jul-25	18:18	5	15.72	0.0	6.9	0.0	0.0	0		
2006-Jul-25	18:18	5	15.73	0.0	6.9	0.0	0.0	0		
2006-Jul-25	18:18								Reset Total, Vol = 6.87 bbl	
2006-Jul-25	18:19	220	10.33	2.3	7.1	2.3	0.3	0		
2006-Jul-25	18:19	133	9.31	2.3	8.3	2.3	1.4	0		
2006-Jul-25	18:19								End Job	
2006-Jul-25	18:19	5	9.28	0.0	0.0	2.4	0.1	0		

KCC
 NOV 10 2006
CONFIDENTIAL

RECEIVED
 KANSAS CORPORATION COMMISSION
 NOV 13 2006
 CONSERVATION DIVISION
 WICHITA, KS

Post Job Summary

Average Pump Rates, bpm				Volume of Fluid Injected, bbl			
Slurry	N2	Mud	Maximum Rate	Total Slurry	Mud	Spacer	N2
4			5	149		12	
Treating Pressure Summary, psi				Breakdown Fluid			
Maximum	Final	Average	Bump Plug to Breakdown	Volume	Density		
200		100	900		8.34 lb/gal		
Avg. N2 Percent	Designed Slurry Volume	Displacement	Mix Water Temp	<input checked="" type="checkbox"/> Cement Circulated to Surface?	Volume	52 bbl	
%	146 bbl	35 bbl	80 °F	<input type="checkbox"/> Washed Thru Peris	To	ft	
Customer or Authorized Representative			Schlumberger Supervisor		<input type="checkbox"/> Circulation Lost	<input checked="" type="checkbox"/> Job Completed	
Thompson, Tommy			Grigoriev, Valery				



Cementing Job Report

Well	Republic Tee 5-31	Client	Exxon mobil
Field		SIR No.	2205551459
Engineer	Val Grigoriev	Job Type	R 5/8" Surface
Country	United States	Job Date	07-25-2006

Time	Pressure	Rate	Density	Messages
16:22:19				Start Job Pressure Test Lines
16:32:00				Start Pumping Spacer Reset Total, Vol = 12.39 bbl End Spacer Start Mixing Lead Slurry
16:42:00				
16:52:00				Reset Total, Vol = 100 bbl End Lead Slurry Start Mixing Tail Slurry
17:07:00				Reset Total, Vol = 49.93 bbl Drop Top Plug End Tail Slurry Start Displacement
17:12:00				
17:22:00				End Displacement Reset Total, Vol = 35.50 bbl Bump Top Plug Hold held Pressure Test Casing
17:32:00				KCC NOV 10 2006 CONFIDENTIAL
17:42:00				RECEIVED KANSAS CORPORATION COMMISSION NOV 13 2006 CONSERVATION DIVISION WICHITA, KS
17:52:00				Pressure test successful Start Top out
18:02:00				
18:12:00				
18:19:53				Reset Total, Vol = 6.87 bbl End Job
hh:mm:ss	0.00 200 400 600 800 1000 1200 1400 1600 1800 2000	0.00 1.0 2.0 3.0 4.0 5.0 6.0 7.0 8.0 9.0 10.0	8.0 9.0 10.0 11.0 12.0 13.0 14.0 15.0 16.0 17.0 18.0 19.0 20.0 21.0 22.0 23.0 24.0 25.0	
07/25/2006 18:14:53	PSI	B/M	LB/G	

ExxonMobil Production Company

P.O. Box 4358

Houston, Texas 77210

ExxonMobil
Production

November 10, 2006

Kansas Corporation Commission
Conservation Division
Finney State Office Building
130 S. Market, Room 2078
Wichita, KS 67202-3802

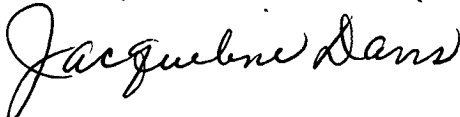
KCC
NOV 10 2006
CONFIDENTIAL

Re: Electric Logs and Information Confidentiality
Republic Fee Unit #5-31
API No. 15-189-22532

Dear Sir or Madam:

ExxonMobil Oil Corporation requests that all electric logs and applicable information pertaining to the Republic Fee Unit #5-31 lease are held confidential for the maximum applicable time period allowed by the Kansas Corporation Commission to include any future allowable extensions.

Sincerely,



Jacqueline Davis
Support Staff Office Assistant

RECEIVED
KANSAS CORPORATION COMMISSION
NOV 13 2006
CONSERVATION DIVISION
WICHITA, KS