

Notice: Fill out COMPLETELY and return to Conservation Division at the address below within 60 days from plugging date

KANSAS CORPORATION COMMISSION OIL & GAS CONSERVATION DIVISION JUL 30 2009 WELL PLUGGING RECORD RECEIVED K.A.R. 82-3-117

Form CP-4 December 2003 Type or Print on this Form Form must be Signed All blanks must be Filled

Lease Operator: Presco Western, LLC
Address: 5665 FLATIRON PARKWAY BOULDER CO 80301
Phone: 303-305-1163 Operator License #: 32309
Type of Well: Gas Docket #:
The plugging proposal was approved on: 6/10/2009
by: Steve Durrant
Is ACO-1 filed? Yes No
Producing Formation(s): List All

API Number: 15- 187-20762 - 0000
Lease Name: Elliot Spencer
Well Number: 1-17
Spot Location (QQQQ): C - C - SE - NE
3.300 Feet from North / South Section Line
660 Feet from East / West Section Line
Sec. 17 Twp. 30 S. R. 39 East West
County: Stanton
Date Well Completed: 2/23/95
Plugging Commenced: 6/28/2009
Plugging Completed: 6/29/2009

Show depth and thickness of all water, oil and gas formations.

Table with 7 columns: Formation, Content, From, To, Size, Put in, Pulled out. Contains data for Oil, Gas or Water Records and Casing Record.

Describe in detail the manner in which the well was plugged, indicating where the mud fluid was placed and the method or methods used in introducing it into the hole.

Plug 1: CIBP @ 5,570' w/ 2 SKS cmt. Plug 2: 20 SKS cmt @ 3,087'. Plug 3: 20 SKS cmt @ 1,953'. Plug 4: 50 SKS cmt @ 693'. Plug 5: 20 SKS cmt @ 63'. Plug 6: 20 SKS cmt @ surface. Plug 7: 40 SKS cmt down surface csg.

\*All cement used is 60/40 POZ w/ 4% gel.

Name of Plugging Contractor: Basic Energy Services, L.P. License #: 34069

Address: P.O. Box 129, Liberal, KS 67905

Name of Party Responsible for Plugging Fees: Presco Western, LLC

State of Colorado County, Boulder, ss.

Keli Kowalski (Employee of Operator) or (Operator) on above-described well, being first duly sworn on oath, says: That I have knowledge of the facts statements, and matters herein contained, and the log of the above-described well as filed and the same are true and correct, so help me God.

(Signature) Keli Kowalski

(Address) 5665 Flatiron Parkway, Boulder, CO 80301

SUBSCRIBED and SWORN TO before me this 29th day of July, 2009

Jandy Blackburn My Commission Expires: 01/29/2013
Notary Public

JUL 30 2009

STANTON COUNTY

RECEIVED

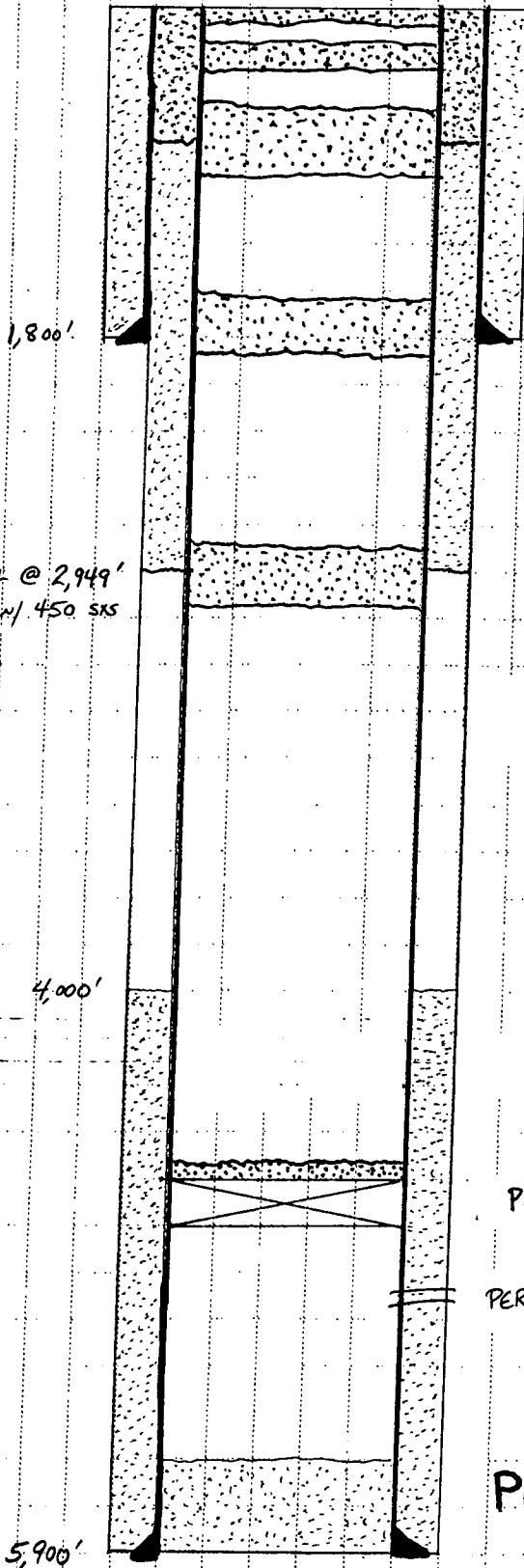
ELLIOT SPENCER 1-17  
15-187-20762

PLUGGING COMMENCED:  
6/28/09

PLUGGING COMPLETED:  
6/29/09

PLUGGING APPROVED:  
VERBALLY ON 6/10/09  
BY STEVE DURRANT (KCC)

PLUGGING CONTRACTOR:  
BASIC ENERGY



PLUG # 7 - 40 SXS CMT DOWN SURFACE CASING

PLUG # 6 - 20 SXS CMT @ SURFACE

PLUG # 5 - 20 SXS CMT @ 63' (BTM OF PLUG)

PLUG # 4 - 50 SXS CMT @ 693' (BTM OF PLUG)

**SURFACE CSG**

8 5/8" 24 # J-55 @ 1,800'

CMT'D W/ 750 SXS

PLUG # 3 - 20 SXS CMT @ 1,953' (BTM OF PLUG)

PLUG # 2 - 20 SXS CMT @ 3,087' (BTM OF PLUG)

DV TOOL @ 2,949'  
CMT'D W/ 450 SXS

PLUG # 1 - CIBP @ 5,570' w/ 2 SXS CMT ON TOP

PERFS 5,610' - 5,628' (MORROW)

**PRODUCTION CSG**

5 1/2" 14 # CF-50 @ 5,900'

CMT'D W/ 450 SXS