

CONFIDENTIAL

CONFIDENTIAL

ORIGINAL

1-31-08

KANSAS CORPORATION COMMISSION
OIL & GAS CONSERVATION DIVISION

Form ACO-1

September 1999

WELL COMPLETION FORM
WELL HISTORY - DESCRIPTION OF WELL & LEASE

Form Must Be Typed

Operator: License # 5447
Name: OXY USA Inc.
Address: P.O. Box 2528
City/State/Zip: Liberal, KS 67905
Purchaser: NA
Operator Contact Person: Rafael Bacigalpo
Phone: (620) 629-4200
Contractor: Name: Murfin Drilling Co., Inc.
License: 30606
Wellsite Geologist: NA

API No. 15 - 17522070-00-00
County: Seward
C - SE - SE - SE Sec 9 Twp. 34S S. R. 33W
330 feet from S N (circle one) Line of Section
330 feet from E W (circle one) Line of Section

Footages Calculated from Nearest Outside Section Corner:
(circle one) NE SE NW SW
Lease Name: PREIFERT B Well #: 2

Field Name: _____
Producing Formation: NA
Elevation: Ground: 2866 Kelly Bushing: 2877

Total Depth: 6700 Plug Back Total Depth: _____
Amount of Surface Pipe Set and Cemented at 1560 feet
Multiple Stage Cementing Collar Used? Yes No

If yes, show depth set _____
If Alternate II completion, cement circulated from _____
feet depth to _____ w/ _____ sx cmt.

Designate Type of Completion:
 New Well Re-Entry Workover
 Oil SWD SLOW Temp. Abd.
 Gas ENHR SIGW
 Dry Other (Core, WSW, Expl, Cathodic, etc)
If Workover/Re-entry: Old Well Info as follows:
Operator: _____
Well Name: _____

Original Comp. Date: _____ Original Total Depth: _____
 Deepening Re-perf. Conv. To Enhr./SWD
 Plug Back Plug Back Total Depth
 Commingled Docket No. _____
 Dual Completion Docket No. _____
 Other (SWD or Enhr.?) Docket No. _____
10/29/06 11/10/06 11/11/06
Spud Date or Date Reached TD Completion Date or Recompletion Date

Drilling Fluid Management Plan. PA NH 9-408
(Data must be collected from the Reserve Pit)
Chloride content 1100 mg/l ppm Fluid volume 1650 bbls
Dewatering method used Evaporation
Location of fluid disposal if hauled offsite: _____
Operator Name: _____
Lease Name: _____ License No.: _____
Quarter _____ Sec. _____ Twp, _____ S. R. East West
County: _____ Docket No.: _____

INSTRUCTIONS: An original and two copies of this form shall be filed with the Kansas Corporation Commission, 130 S. Market - Room 2078, Wichita, Kansas 6702, within 120 days of the spud date, recompletion, workover or conversion of a well. Rule 82-3-130, 82-3-106 and 82-3-107 apply. Information of side two of this form will be held confidential for a period of 12 months if requested in writing and submitted with the form (see rule 82-3-107 for confidentiality in excess of 12 months). One copy of all wireline logs and geologist well report shall be attached with this form. ALL CEMENTING TICKETS MUST BE ATTACHED. Submit CP-4 form with all plugged wells. Submit CP-111 form with all temporarily abandoned wells.

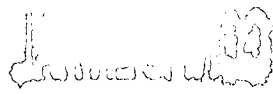
All requirements of the statutes, rules and regulations promulgated to regulate the oil and gas industry have been fully complied with and the statements herein are complete and correct to the best of my knowledge.

Signature: [Signature]
Title: Capital Project Date 01/31/2007
Subscribed and sworn to before me this 31 day of Jan
07
Notary Public: Anita Peterson
Date Commission Expires: Oct. 1, 2009

KCC Office Use Only
 Letter of Confidentiality Attached
If Denied, Yes Date: _____
 Wireline Log Received
 Geologist Report Received
 UIC Distribution

ANITA PETERSON
Notary Public - State of Kansas
My Appt. Expires October 1, 2009

RECEIVED
FEB 01 2007
KCC WICHITA



Side Two

Operator Name: OXY USA Inc. Lease Name: Preifert B Well #: 2

Sec. 9 Twp. 34 S. R. 33W East West County: Seward

Instructions: Show important tops and base of formations penetrated. Detail all cores. Report all final copies of drill stems tests giving interval tested, time tool open and closed, flowing and shut-in pressures, whether shut-in pressure reached static level, hydrostatic pressures, bottom hole temperature, fluid recovery, and flow rates if gas to surface test, along with final chart(s). Attach extra sheet if more space is needed. Attach copy of all Electric Wireline Logs surveyed. Attach final geological well site report.

Drill Stem Tests Taken <i>(Attach Additional Sheets)</i>	<input type="checkbox"/> Yes <input checked="" type="checkbox"/> No	<input checked="" type="checkbox"/> Log Formation (Top), Depth and Datum	<input type="checkbox"/> Sample
Samples Sent to Geological Survey	<input type="checkbox"/> Yes <input checked="" type="checkbox"/> No	Name	Top Datum
Cores Taken	<input type="checkbox"/> Yes <input checked="" type="checkbox"/> No	Chase	2663.89 213.11
Electric Log Run <i>(Submit Copy)</i>	<input checked="" type="checkbox"/> Yes <input type="checkbox"/> No	Council Grove	2971.47 -94.47
List All E. Logs Run:	High Resolution Induction	Heebner	4337.96 -1460.96
	Microlog Long Spaced Sonic	Toronto	4355.19 -1478.19
	Spectral Density Dual Spaced Neutron	Lansing	4483.14 -1606.14
		Marmaton	5201.66 -2324.66
		Cherokee	5436.24 -2559.24
		(See Side Three)	

CASING RECORD <input checked="" type="checkbox"/> New <input type="checkbox"/> Used							
Report all strings set-conductor, surface, intermediate, production, etc.							
Purpose of String	Size Hole Drilled	Size Casing Set(in. O.D.)	Weight Lbs./ft.	Setting Depth	Type of Cement	# Sacks Used	Type and Percent Additives
Conductor					C		
Surface	12 1/4	8 5/8	24	1698	C	585	35/65 Poz + Additives
					C	195	Class C + Additives
Production					C		

ADDITIONAL CEMENTING / SQUEEZE RECORD

Purpose:	Depth Top Bottom	Type of Cement	#Sacks Used	Type and Percent Additives
<input type="checkbox"/> Perforate				
<input type="checkbox"/> Protect Casing	-			
<input type="checkbox"/> Plug Back TD				
<input type="checkbox"/> Plug off Zone	-			

Shots Per Foot	PERFORATION RECORD - Bridge Plugs Set/type Specify Footage of Each Interval Perforated	Acid, Fracture, Shot, Cement Squeeze Record (Amount and Kind of Material Used)	Depth
	100 sxs @ 3500'		
	50 sxs @ 1730'		
	40 sxs @ 600'		
	20 sxs @ 60'		

TUBING RECORD		Size	Set At	Packer At	Liner Run	<input type="checkbox"/> Yes <input checked="" type="checkbox"/> No
Date of First, Resumed Production, SWD or Enhr.			Producing Method			
			<input type="checkbox"/> Flowing <input type="checkbox"/> Pumping <input type="checkbox"/> Gas Lift <input checked="" type="checkbox"/> Other (Explain) P&A			
Estimated Production Per 24 Hours	Oil BBLS	Gas Mcf	Water Bbls	Gas-Oil Ratio	Gravity	

Disposition of Gas METHOD OF COMPLETION Production Interval

Vented Sold Used on Lease
 Open Hole Perf. Dually Comp. Commingled _____
(If vented, Submit ACO-18)

Other (Specify) _____ P&A _____

Side Three

Operator Name: OXY USA Inc. Lease Name: Preifert B Well #: 2

Sec. 9 Twp. 34 S. R. 33W East West County: Seward

<u>Name</u>	<u>Top</u>	<u>Datum</u>
Morrow	5808.11	-2931.11
Lower Morrow Sand	6008.03	-3131.03
Chester	6060.2	-3183.2
St Genevieve	6385.84	-3508.84
St Louis	6480	-3603
TD	6700	

KCC
JAN 31 2007
CONFIDENTIAL

RECEIVED
FEB 01 2007
KCC WICHITA

Customer OXY RESOURCE CALIFORNIA LLC	Job Number 220552449
--	--------------------------------

CONFIDENTIAL

Well PREIFERT B 2		Location (legal) SEC 9-T34S-R33W		Schlumberger Location Perryton, TX		Job Start 2006-Nov-11	
Field SALLEY		Formation Name/Type		Deviation °		Bit Size 7.88 in	
County SEWARD		State/Province KANSAS		Well MD 3,500 ft		Well TVD 3,500 ft	
Well Master: 0630860696		API / UWI: 15175220700000		BHP psi			
Rig Name MURFIN 20		Drilled For Oil & Gas		Service Via Land		BHT 115 °F	
Offshore Zone		Well Class New		Well Type Development		BHCT °F	
Drilling Fluid Type		Max. Density 9.2 lb/gal		Plastic Vt: cp		Pore Press. Gradient psi/ft	
Service Line Cementing		Job Type Plug & Abandon		Casing/Liner			
Max. Allowed Tubing Pressure 1500 psi		Max. Allowed Ann. Pressure psi		WellHead Connection 4 1/2" XH DP pin		Perforations/Open Hole	
Service Instructions CEMENT ABANDONMENT PLUGS USING 275 SKS 40/60 POZ H + 6%D20 + 0.2%D46							
100 sks @3500 ft, 50 sks @ 1730 ft, 40 sks @600 ft, 20 sks @60 ft 25 sks for Mouse and Rat holes							
Casing/Tubing Secured <input checked="" type="checkbox"/>		1 Hole Volume Circulated prior to Cementing <input checked="" type="checkbox"/>		Casing Tools		Squeeze Job	
Lift Pressure: psi		Pipe Rotated <input type="checkbox"/>		Pipe Reciprocated <input type="checkbox"/>		Shoe Type:	
No. Centralizers: Top Plugs:		Bottom Plugs:		Stage Tool Type:		Squeeze Type:	
Cement Head Type: Single		Job Scheduled For: 11/11/2006		Arrived on Location: 2006-Nov-11 11:00		Leave Location: 2006-Nov-11	
				Shoe Depth: ft		Tool Type:	
				Stage Tool Depth: ft		Tool Depth: ft	
				Collar Type:		Tail Pipe Size: in	
				Collar Depth: ft		Tail Pipe Depth: ft	
				Squz Total Vol: dbl			

Date	Time	Pressure	Density	Rate	Volume	0	0	0	Message
	24 hr clock	psi	lb/gal	dbl/min	dbl	0	0	0	
2006-Nov-11	13:16	0	8.30	0.0	0.0	0	0	0	
2006-Nov-11	13:16								Pressure Test Lines
2006-Nov-11	13:16	0	8.30	0.0	0.0	0	0	0	
2006-Nov-11	13:16								3500 ft - 100 sks
2006-Nov-11	13:23	27	8.35	0.0	0.1	0	0	0	
2006-Nov-11	13:23								Start Pumping Spacer
2006-Nov-11	13:23	27	8.35	0.0	0.0	0	0	0	
2006-Nov-11	13:23	78	8.35	1.0	0.1	0	0	0	
2006-Nov-11	13:24	201	8.31	4.0	1.9	0	0	0	
2006-Nov-11	13:24	201	8.31	4.0	3.9	0	0	0	
2006-Nov-11	13:25	201	8.31	4.0	5.9	0	0	0	
2006-Nov-11	13:25	201	8.32	4.0	7.9	0	0	0	
2006-Nov-11	13:26	201	8.30	3.9	9.9	0	0	0	
2006-Nov-11	13:26								Reset Total, Vol = 10.53 dbl
2006-Nov-11	13:26	211	8.56	4.0	10.5	0	0	0	
2006-Nov-11	13:26	206	8.93	4.0	0.1	0	0	0	
2006-Nov-11	13:26								Start Cement Slurry
2006-Nov-11	13:26	229	12.14	4.0	1.3	0	0	0	
2006-Nov-11	13:27	385	12.54	5.5	3.7	0	0	0	
2006-Nov-11	13:27	357	13.60	5.5	6.5	0	0	0	
2006-Nov-11	13:28	330	12.08	5.5	9.2	0	0	0	
2006-Nov-11	13:28	-3804	12.62	5.5	12.0	0	0	0	

RECEIVED

FEB 01 2007

KCC WICHITA

Well		Field				Service Date		Customer		Job Number
PREIFERT B #2		SALLEY				06315-Nov-11		OXY RESOURCE CALIFORNIA LLC		2205552449
Date	Time	Pressure	Density	Rate	Volume	0	0	0	Message	
	24 hr clock	psi	lb/gal	bbl/min	bbl	0	0	0		
2006-Nov-11	13:29	-3809	12.74	5.5	14.7	0	0	0	KCC	
2006-Nov-11	13:29	-3809	13.01	5.5	17.5	0	0	0		
2006-Nov-11	13:30	-3809	12.90	5.5	20.2	0	0	0	JAN 31 2007	
2006-Nov-11	13:30	-3809	12.88	5.5	22.9	0	0	0		
2006-Nov-11	13:31	-3809	12.84	5.5	25.7	0	0	0	CONFIDENTIAL	
2006-Nov-11	13:31	-3809	13.00	2.7	28.2	0	0	0		
2006-Nov-11	13:32	69	13.08	2.7	29.5	0	0	0		
2006-Nov-11	13:32								Reset Total, Vol = 30.29 bbl	
2006-Nov-11	13:32	27	12.90	2.5	30.3	0	0	0		
2006-Nov-11	13:32								Start Displacement	
2006-Nov-11	13:32	0	11.95	1.7	0.0	0	0	0		
2006-Nov-11	13:32	0	6.76	0.5	0.2	0	0	0		
2006-Nov-11	13:33	23	9.05	1.6	0.5	0	0	0		
2006-Nov-11	13:33	27	9.00	2.0	1.5	0	0	0		
2006-Nov-11	13:34	27	8.99	2.7	2.7	0	0	0		
2006-Nov-11	13:34	-14	8.64	0.0	3.6	0	0	0		
2006-Nov-11	13:35	69	8.83	3.0	4.1	0	0	0		
2006-Nov-11	13:35	183	8.92	4.0	6.1	0	0	0		
2006-Nov-11	13:36	174	8.90	4.0	8.1	0	0	0		
2006-Nov-11	13:36	174	8.88	4.0	10.1	0	0	0		
2006-Nov-11	13:37	169	8.86	4.0	12.0	0	0	0		
2006-Nov-11	13:37	160	8.76	4.0	14.0	0	0	0		
2006-Nov-11	13:38	156	8.85	4.0	16.0	0	0	0		
2006-Nov-11	13:38	142	8.81	4.0	18.0	0	0	0		
2006-Nov-11	13:39	142	8.79	4.0	20.0	0	0	0		
2006-Nov-11	13:39	142	8.76	4.0	22.0	0	0	0		
2006-Nov-11	13:40	142	8.76	4.0	24.0	0	0	0		
2006-Nov-11	13:40	146	9.09	4.0	25.9	0	0	0		
2006-Nov-11	13:41	146	9.06	4.0	27.9	0	0	0		
2006-Nov-11	13:41	142	9.05	3.9	29.9	0	0	0		
2006-Nov-11	13:42	165	9.02	4.0	31.9	0	0	0		
2006-Nov-11	13:42	197	9.04	4.0	33.9	0	0	0		
2006-Nov-11	13:43	224	9.06	4.0	35.9	0	0	0		
2006-Nov-11	13:43	256	9.05	4.0	37.9	0	0	0		
2006-Nov-11	13:44	46	9.01	0.1	39.6	0	0	0		
2006-Nov-11	13:44	5	9.01	0.0	39.6	0	0	0		
2006-Nov-11	13:45	5	9.01	0.0	39.6	0	0	0		
2006-Nov-11	13:45	5	9.00	0.0	39.6	0	0	0		
2006-Nov-11	13:46								Reset Total, Vol = 39.63 bbl	
2006-Nov-11	13:46	0	9.00	0.0	39.6	0	0	0		
2006-Nov-11	13:46								DP staying full	
2006-Nov-11	13:46	0	8.99	0.0	39.6	0	0	0		
2006-Nov-11	14:41	5	6.66	0.0	0.0	0	0	0		
2006-Nov-11	14:41	5	6.68	0.0	0.0	0	0	0		
2006-Nov-11	14:41								1730 ft - 50 sks	
2006-Nov-11	14:42								Start Pumping Spacer	
2006-Nov-11	14:42	5	6.73	0.0	0.0	0	0	0		
2006-Nov-11	14:42	5	6.94	0.0	0.0	0	0	0		
2006-Nov-11	14:42	5	7.19	0.0	0.0	0	0	0		
2006-Nov-11	14:43	0	7.60	0.0	0.0	0	0	0		
2006-Nov-11	14:43	0	7.89	0.0	0.0	0	0	0		
2006-Nov-11	14:44	0	7.92	0.0	0.0	0	0	0		
2006-Nov-11	14:44	0	7.91	0.0	0.0	0	0	0		
2006-Nov-11	14:45	87	8.31	4.0	0.5	0	0	0		

RECEIVED

FEB 01 2007

KCC WICHITA

Well		Field			Service Date		Customer		Job Number
PREIFERT B #2		SALLEY			06315-Nov-11		OXY RESOURCE CALIFORNIA LLC		2205552449
Date	Time	Pressure	Density	Rate	Volume	0	0	0	Message
	24 hr clock	psi	lb/gal	bbl/min	bbl	0	0	0	
2006-Nov-11	14:45	87	8.31	4.0	2.5	0	0	0	
2006-Nov-11	14:46	87	8.30	4.0	4.5	0	0	0	
2006-Nov-11	14:46	92	8.31	4.0	6.5	0	0	0	
2006-Nov-11	14:47	105	8.29	4.0	8.4	0	0	0	
2006-Nov-11	14:47	124	8.33	4.0	10.4	0	0	0	
2006-Nov-11	14:48	133	8.54	4.0	10.7	0	0	0	
2006-Nov-11	14:48								Reset Total, Vol = 10.69 bbl
2006-Nov-11	14:48	133	8.67	4.0	0.1	0	0	0	
2006-Nov-11	14:48								Start Cement Slurry
2006-Nov-11	14:48	151	9.82	4.0	1.7	0	0	0	
2006-Nov-11	14:48	156	10.46	4.0	3.7	0	0	0	
2006-Nov-11	14:49	179	12.93	4.0	5.7	0	0	0	
2006-Nov-11	14:49	169	12.56	4.0	7.7	0	0	0	
2006-Nov-11	14:50	169	13.13	4.0	9.7	0	0	0	
2006-Nov-11	14:50	169	12.59	4.0	11.7	0	0	0	
2006-Nov-11	14:51	78	12.79	2.7	13.0	0	0	0	
2006-Nov-11	14:51	101	12.80	2.7	14.4	0	0	0	
2006-Nov-11	14:52								Reset Total, Vol = 14.62 bbl
2006-Nov-11	14:52	23	12.67	2.5	14.6	0	0	0	
2006-Nov-11	14:52	0	12.03	1.7	0.0	0	0	0	
2006-Nov-11	14:52								Start Displacement
2006-Nov-11	14:52	18	9.33	0.5	0.3	0	0	0	
2006-Nov-11	14:52	78	8.68	3.5	1.6	0	0	0	
2006-Nov-11	14:53	73	8.60	3.4	3.3	0	0	0	
2006-Nov-11	14:53	-5	8.51	1.1	3.9	0	0	0	
2006-Nov-11	14:54	128	9.08	4.0	5.2	0	0	0	
2006-Nov-11	14:54	128	9.05	4.0	7.2	0	0	0	
2006-Nov-11	14:55	119	9.01	4.0	9.2	0	0	0	
2006-Nov-11	14:55	133	9.03	4.0	11.2	0	0	0	
2006-Nov-11	14:56	160	9.06	4.0	13.2	0	0	0	
2006-Nov-11	14:56	156	9.07	4.0	15.2	0	0	0	
2006-Nov-11	14:57	156	9.07	4.0	17.2	0	0	0	
2006-Nov-11	14:57	151	9.07	4.0	19.1	0	0	0	
2006-Nov-11	14:58	14	9.05	0.0	19.4	0	0	0	
2006-Nov-11	14:58	9	9.04	0.0	19.4	0	0	0	
2006-Nov-11	14:59	5	9.04	0.0	19.4	0	0	0	
2006-Nov-11	14:59								Reset Total, Vol = 19.41 bbl
2006-Nov-11	14:59	0	9.03	0.0	19.4	0	0	0	
2006-Nov-11	14:59	0	9.03	0.0	0.0	0	0	0	
2006-Nov-11	14:59								Plug Falling
2006-Nov-11	15:35	9	0.09	0.0	0.0	0	0	0	
2006-Nov-11	15:35								600 ft - 40 sks
2006-Nov-11	15:35	9	0.09	0.0	0.0	0	0	0	
2006-Nov-11	15:35	9	0.09	0.0	0.0	0	0	0	
2006-Nov-11	15:35								Start Pumping Spacer
2006-Nov-11	15:36	23	7.93	1.1	0.1	0	0	0	
2006-Nov-11	15:36	92	8.31	4.0	1.6	0	0	0	
2006-Nov-11	15:37	92	8.30	4.0	3.6	0	0	0	
2006-Nov-11	15:37	96	8.30	4.0	5.5	0	0	0	
2006-Nov-11	15:38	96	8.30	4.0	7.5	0	0	0	
2006-Nov-11	15:38	105	8.30	4.0	9.5	0	0	0	
2006-Nov-11	15:39								Reset Total, Vol = 10.84
2006-Nov-11	15:39	105	8.82	4.0	10.8	0	0	0	
2006-Nov-11	15:39	101	9.03	4.0	0.1	0	0	0	

KCC

JAN 31 2007

CONFIDENTIAL

RECEIVED

FEB 01 2007

KCC WICHITA

Well		Field			Service Date		Customer		Job Number
PREIFERT B #2		SALLEY			06315-Nov-11		OXY RESOURCE CALIFORNIA LLC		2205552449
Date	Time	Pressure	Density	Rate	Volume	0	0	0	Message
	24 hr clock	psi	lb/gal	bbl/min	bbl	0	0	0	
2006-Nov-11	15:39								Start Cement Slurry
2006-Nov-11	15:39	110	9.71	4.0	0.7	0	0	0	
2006-Nov-11	15:39	146	11.58	4.0	2.6	0	0	0	
2006-Nov-11	15:40	179	12.98	4.0	4.6	0	0	0	
2006-Nov-11	15:40	174	12.29	4.0	6.6	0	0	0	
2006-Nov-11	15:41	87	12.93	2.7	8.4	0	0	0	
2006-Nov-11	15:41	96	12.94	2.7	9.7	0	0	0	
2006-Nov-11	15:42	9	11.82	0.6	10.5	0	0	0	
2006-Nov-11	15:42								Reset Total, Vol = 11.5 bbl
2006-Nov-11	15:42								Start Displacement
2006-Nov-11	15:42	9	10.18	0.5	0.0	0	0	0	
2006-Nov-11	15:42	14	10.18	1.7	0.1	0	0	0	
2006-Nov-11	15:42	60	8.66	2.7	1.3	0	0	0	
2006-Nov-11	15:43	-5	8.06	0.0	2.3	0	0	0	
2006-Nov-11	15:43	55	8.89	2.6	2.6	0	0	0	
2006-Nov-11	15:44	64	9.06	2.7	4.0	0	0	0	
2006-Nov-11	15:44	18	9.05	0.9	5.3	0	0	0	
2006-Nov-11	15:45	9	9.02	0.0	5.3	0	0	0	
2006-Nov-11	15:45	5	9.01	0.0	5.3	0	0	0	
2006-Nov-11	15:46	5	9.02	0.0	5.3	0	0	0	
2006-Nov-11	15:46	5	8.99	0.0	5.3	0	0	0	
2006-Nov-11	15:46								Reset Total, Vol = 5.31 bbl
2006-Nov-11	15:46	5	8.99	0.0	0.0	0	0	0	
2006-Nov-11	15:46								Plug Falling
2006-Nov-11	16:33	5	2.62	0.0	0.0	0	0	0	
2006-Nov-11	16:33								Batch Mix Plugs
2006-Nov-11	16:33	5	3.33	0.0	0.0	0	0	0	
2006-Nov-11	16:33								Surface Plug
2006-Nov-11	16:33	5	4.90	0.0	0.0	0	0	0	
2006-Nov-11	16:33	5	7.77	0.0	0.0	0	0	0	
2006-Nov-11	16:34	5	8.05	0.0	0.0	0	0	0	
2006-Nov-11	16:34	5	8.17	0.0	0.0	0	0	0	
2006-Nov-11	16:35	5	9.37	0.0	0.0	0	0	0	
2006-Nov-11	16:35	5	12.53	0.0	0.0	0	0	0	
2006-Nov-11	16:36	5	13.19	0.0	0.0	0	0	0	
2006-Nov-11	16:36								Start Cement Slurry
2006-Nov-11	16:36	5	13.17	0.0	0.0	0	0	0	
2006-Nov-11	16:36	27	13.45	2.7	0.6	0	0	0	
2006-Nov-11	16:37	179	12.45	4.0	2.5	0	0	0	
2006-Nov-11	16:37	179	12.74	4.0	4.4	0	0	0	
2006-Nov-11	16:38	169	12.50	4.0	6.4	0	0	0	
2006-Nov-11	16:38								Reset Total, Vol = 6.93 bbl
2006-Nov-11	16:38	5	12.50	1.1	6.9	0	0	0	
2006-Nov-11	16:38	0	12.34	0.0	0.0	0	0	0	
2006-Nov-11	16:39	0	12.24	0.0	0.0	0	0	0	
2006-Nov-11	16:39	5	12.20	0.0	0.0	0	0	0	
2006-Nov-11	16:40	5	12.12	0.0	0.0	0	0	0	
2006-Nov-11	16:40	5	12.12	0.0	0.0	0	0	0	
2006-Nov-11	16:41	5	12.12	0.0	0.0	0	0	0	
2006-Nov-11	16:41	5	12.12	0.0	0.0	0	0	0	
2006-Nov-11	16:42	5	12.12	0.0	0.0	0	0	0	
2006-Nov-11	16:42	5	12.11	0.0	0.0	0	0	0	
2006-Nov-11	16:43	5	13.49	0.0	0.0	0	0	0	
2006-Nov-11	16:43								Mouse Hole

KCC

JAN 31 2007

CONFIDENTIAL

RECEIVED

FEB 01 2007

KCC WICHITA

Well		Field		Service Date		Customer		Job Number	
PREIFERT B #2		SALLEY		06315-Nov-11		OXY RESOURCE CALIFORNIA LLC		2205552449	
Date	Time	Pressure	Density	Rate	Volume	0	0	0	Message
	24 hr clock	psi	lb/gal	bbl/min	bbl	0	0	0	
2006-Nov-11	16:43								Start Cement Slurry
2006-Nov-11	16:43	5	13.48	0.0	0.0	0	0	0	
2006-Nov-11	16:43	37	13.44	0.5	0.2	0	0	0	
2006-Nov-11	16:44	41	13.48	1.2	0.6	0	0	0	
2006-Nov-11	16:44	27	13.49	1.0	1.1	0	0	0	
2006-Nov-11	16:45	41	13.51	1.8	1.9	0	0	0	
2006-Nov-11	16:45	60	12.63	2.7	3.3	0	0	0	
2006-Nov-11	16:46								Reset Total, Vol = 3.67 bbl
2006-Nov-11	16:46	9	12.57	0.0	3.7	0	0	0	
2006-Nov-11	16:46	5	11.24	0.0	0.0	0	0	0	
2006-Nov-11	16:46	5	10.44	0.0	0.0	0	0	0	
2006-Nov-11	16:47	5	10.43	0.0	0.0	0	0	0	
2006-Nov-11	16:47	5	10.44	0.0	0.0	0	0	0	
2006-Nov-11	16:48	5	10.44	0.0	0.0	0	0	0	
2006-Nov-11	16:48	5	10.45	0.0	0.0	0	0	0	
2006-Nov-11	16:49	5	10.44	0.0	0.0	0	0	0	
2006-Nov-11	16:49	9	10.47	0.0	0.0	0	0	0	
2006-Nov-11	16:50	9	10.46	0.0	0.0	0	0	0	
2006-Nov-11	16:50	9	10.51	0.0	0.0	0	0	0	
2006-Nov-11	16:51	5	13.42	0.0	0.0	0	0	0	
2006-Nov-11	16:51	5	13.17	0.0	0.0	0	0	0	
2006-Nov-11	16:52								Rat Hole
2006-Nov-11	16:52								Start Cement Slurry
2006-Nov-11	16:52	5	13.02	0.0	0.0	0	0	0	
2006-Nov-11	16:52	41	13.04	1.8	0.2	0	0	0	
2006-Nov-11	16:52	37	13.04	2.3	1.2	0	0	0	
2006-Nov-11	16:53	41	13.04	2.3	2.4	0	0	0	
2006-Nov-11	16:53	41	13.04	2.3	3.5	0	0	0	
2006-Nov-11	16:54	32	9.67	2.7	4.7	0	0	0	
2006-Nov-11	16:54								Reset Total, Vol = 5.97 bbl
2006-Nov-11	16:54	32	8.64	2.7	6.0	0	0	0	
2006-Nov-11	16:54	32	8.52	1.6	0.1	0	0	0	

KCC

JAN 31 2007

CONFIDENTIAL

Post Job Summary

Average Pump Rates, bpm				Volume of Fluid Injected, bbl			
Slurry	N2	Mud	Maximum Rate	Total Slurry	Mud	Spacer	N2
3			4	71		10	
Treating Pressure Summary, psi				Breakdown Fluid			
Maximum	Final	Average	Bump Plug to	Breakdown	Volume	Density	
					bbl	8.34 lb/gal	
Avg. N2 Percent	Designed Slurry Volume	Displacement	Mix Water Temp	<input type="checkbox"/> Cement Circulated to Surface? Volume bbl <input type="checkbox"/> Washed Thru Perfs To ft			
%	71 bbl	38.5 bbl	°F				
Customer or Authorized Representative			Schlumberger Supervisor		<input type="checkbox"/> CirculationLost <input type="checkbox"/> Job Completed		
Bevans, Ronald			Ousley, John				

RECEIVED

FEB 01 2007

KCC WICHITA



Cementing Service Report

KCC

CONFIDENTIAL

Job Number

2205552250

Customer
OXY RESOURCE CALIFORNIA LLC

Well Preifert B-2		Location (legal)		Schlumberger Location Perryton, TX		Job Start 2006-Oct-30			
Field		Formation Name/Type		Deviation		Well TVD			
County Stevens		State/Province Kansas		Bit Size 12.3 in		Well MD 1,700 ft			
Well Master: 0630860696		API / UWI:		BHP psi		BHST 98 °F			
Rig Name MURFIN 20		Drilled For Oil & Gas		Service Via Land		BHCT 85 °F			
Offshore Zone		Well Class New		Well Type Exploration		Pore Press. Gradient psi/ft			
Drilling Fluid Type Bentonite		Max. Density 9 lb/gal		Plastic Viscosity 20 cp		Casing/Liner			
Service Line Cementing		Job Type Cem Surface Casing		Depth, ft 1703		Size, in 8.63			
Max. Allowed Tubing Pressure 1500 psi		Max. Allowed Ann. Pressure psi		WellHead Connection 8 5/8" H&SM		Weight, lb/ft 24			
Service Instructions CEMENT 8 5/8" SURFACE CASING WITH: 10 BBL FRESH WATER 585 SK 35:65 POZ C + 6% D020 + 2% S001 + 0.25 pps D130 195 SK CLASS C + 2% S001 + 0.125 pps D130 DISPLACE WITH FRESH WATER		Perforations/Open Hole		Grade K55		Thread 8RD			
Casing/Tubing Secured <input checked="" type="checkbox"/>		1 Hole Volume Circulated prior to Cementing <input checked="" type="checkbox"/>		Top, ft		Bottom, ft			
Lift Pressure: 680 psi		Pipe Rotated <input type="checkbox"/>		Pipe Reciprocated <input type="checkbox"/>		spf			
No. Centralizers: 12		Top Plugs: 1		Bottom Plugs: 0		No. of Shots			
Cement Head Type: Single		Job Scheduled For: 2006-Oct-30 18:40		Arrived on Location: 2006-Oct-30 22:00		Leave Location:			
Job Scheduled For: 2006-Oct-30 18:40		Arrived on Location: 2006-Oct-30 22:00		Treat Down Casing		Displacement 106 bbl			
Job Scheduled For: 2006-Oct-30 18:40		Arrived on Location: 2006-Oct-30 22:00		Tubing Vol. bbl		Casing Vol. 109 bbl			
Job Scheduled For: 2006-Oct-30 18:40		Arrived on Location: 2006-Oct-30 22:00		Annular Vol. 125 bbl		Open Hole Vol. 245 bbl			
Job Scheduled For: 2006-Oct-30 18:40		Arrived on Location: 2006-Oct-30 22:00		Casing Tools		Squeeze Job			
Job Scheduled For: 2006-Oct-30 18:40		Arrived on Location: 2006-Oct-30 22:00		Shoe Type: Guide		Squeeze Type			
Job Scheduled For: 2006-Oct-30 18:40		Arrived on Location: 2006-Oct-30 22:00		Shoe Depth: 1703 ft		Tool Type:			
Job Scheduled For: 2006-Oct-30 18:40		Arrived on Location: 2006-Oct-30 22:00		Stage Tool Type:		Tool Depth: ft			
Job Scheduled For: 2006-Oct-30 18:40		Arrived on Location: 2006-Oct-30 22:00		Stage Tool Depth: ft		Tail Pipe Size: in			
Job Scheduled For: 2006-Oct-30 18:40		Arrived on Location: 2006-Oct-30 22:00		Collar Type: Float		Tail Pipe Depth: ft			
Job Scheduled For: 2006-Oct-30 18:40		Arrived on Location: 2006-Oct-30 22:00		Collar Depth: 1658 ft		Sqz Total Vol: bbl			
Date	Time	CMT TREAT PRES psi	CMT DENS lb/gal	CMT RATE bbl/min	CMT VOL bbl	CMT TPLX RATE bbl/min	CMT TPLX VOL bbl	0	Message
2006-Oct-30	19:34	27	8.32	0.0	0.0	0.0	0.0	0	
2006-Oct-30	19:34								Start Job
2006-Oct-30	19:34	0	8.32	0.0	0.0	0.0	0.0	0	
2006-Oct-30	19:34	0	8.32	0.0	0.0	0.0	0.0	0	
2006-Oct-30	19:34	0	8.33	0.0	0.0	0.0	0.0	0	
2006-Oct-30	19:34								Pressure Test Lines
2006-Oct-30	19:35	0	8.32	0.0	0.0	0.0	0.0	0	
2006-Oct-30	19:35	0	8.32	0.0	0.0	0.0	0.0	0	
2006-Oct-30	19:36	64	8.33	2.1	0.9	0.0	0.0	0	
2006-Oct-30	19:36	32	8.32	2.2	2.0	0.0	0.0	0	
2006-Oct-30	19:37	23	8.32	0.0	2.1	0.0	0.0	0	
2006-Oct-30	19:37	1849	8.33	0.0	2.1	0.0	0.0	0	
2006-Oct-30	19:38	1730	8.32	0.0	2.1	0.0	0.0	0	
2006-Oct-30	19:38	1703	8.32	0.0	2.1	0.0	0.0	0	
2006-Oct-30	19:38								Start Pumping Water
2006-Oct-30	19:38	1703	8.32	0.0	2.1	0.0	0.0	0	
2006-Oct-30	19:38	1698	8.32	0.0	2.1	0.0	0.0	0	
2006-Oct-30	19:38								Reset Total, Vol = 2.12 bbl
2006-Oct-30	19:39	1689	8.32	0.0	2.1	0.0	0.0	0	
2006-Oct-30	19:39	14	8.32	0.0	2.1	0.0	0.0	0	
2006-Oct-30	19:40	179	8.32	6.2	3.9	6.2	1.8	0	
2006-Oct-30	19:40	151	8.32	5.6	6.8	5.5	4.6	0	

RECEIVEDFEB 01 2007
Page 1 of 5**KCC WICHITA**

Well		Field				Service Date		Customer		Job Number
Preifert #B-2						06303-Oct-30		OXY RESOURCE CALIFORNIA LLC		2205552250
Date	Time	CMT TREAT PRES	CMT DENS	CMT RATE	CMT VOL	CMT TPLX RATE	CMT TPLX VOL	0	Message	
	24 hr clock	psl	lb/gal	bbl/min	bbl	bbl/min	bbl	0		
2006-Oct-30	19:41	151	8.32	5.7	9.6	5.6	7.4	0		
2006-Oct-30	19:41								Reset Total, Vol = 8.91 bbl	
2006-Oct-30	19:41	151	8.84	5.1	11.0	5.6	8.8	0		
2006-Oct-30	19:41								Start Mixing Lead Slurry	
2006-Oct-30	19:41	151	9.05	4.6	0.2	5.6	0.2	0		
2006-Oct-30	19:41	160	10.17	5.1	1.2	5.6	1.4	0		
2006-Oct-30	19:42	169	12.21	5.8	3.9	5.6	4.2	0		
2006-Oct-30	19:42	174	12.72	5.6	6.7	5.7	7.1	0		
2006-Oct-30	19:43	165	12.72	5.7	9.7	5.8	10.0	0		
2006-Oct-30	19:43	146	12.25	5.6	12.5	5.8	12.9	0		
2006-Oct-30	19:44	146	12.17	5.8	15.4	5.8	15.8	0		
2006-Oct-30	19:44	142	12.17	5.9	18.2	5.8	18.7	0		
2006-Oct-30	19:45	137	12.35	5.9	21.1	5.9	21.6	0		
2006-Oct-30	19:45	133	12.32	5.7	24.0	5.9	24.5	0		
2006-Oct-30	19:46	124	12.23	5.8	26.9	5.8	27.4	0		
2006-Oct-30	19:46	119	12.22	5.7	29.8	5.9	30.4	0		
2006-Oct-30	19:47	114	12.17	5.8	32.7	5.9	33.3	0		
2006-Oct-30	19:47	110	12.14	5.9	35.5	6.0	36.2	0		
2006-Oct-30	19:48	114	12.26	5.8	38.4	5.9	39.2	0		
2006-Oct-30	19:48	114	12.10	5.8	41.4	5.9	42.1	0		
2006-Oct-30	19:49	110	12.22	5.9	44.3	5.9	45.1	0		
2006-Oct-30	19:49	114	12.25	6.0	47.2	5.9	48.1	0		
2006-Oct-30	19:50	114	12.09	5.8	50.2	5.9	51.0	0		
2006-Oct-30	19:50	110	12.03	6.1	53.1	6.0	54.0	0		
2006-Oct-30	19:51	114	12.09	6.3	56.1	6.2	57.0	0		
2006-Oct-30	19:51	114	12.14	6.0	59.1	6.0	60.0	0		
2006-Oct-30	19:52	110	12.10	5.8	62.0	6.0	63.0	0		
2006-Oct-30	19:52	110	12.06	6.0	65.0	6.0	66.0	0		
2006-Oct-30	19:53	114	12.15	5.8	67.9	6.0	69.0	0		
2006-Oct-30	19:53	110	11.96	5.7	70.8	6.0	72.0	0		
2006-Oct-30	19:54	114	12.13	6.1	73.9	6.0	75.0	0		
2006-Oct-30	19:54	110	12.13	6.1	76.9	6.0	78.1	0		
2006-Oct-30	19:55	114	12.48	5.9	79.9	6.0	81.1	0		
2006-Oct-30	19:55	110	12.22	6.1	82.9	6.0	84.1	0		
2006-Oct-30	19:56	114	12.50	6.0	85.9	6.0	87.1	0		
2006-Oct-30	19:56	119	12.37	6.0	88.9	6.0	90.1	0		
2006-Oct-30	19:57	114	12.37	6.1	91.9	6.0	93.1	0		
2006-Oct-30	19:57	114	12.32	6.0	94.9	6.0	96.2	0		
2006-Oct-30	19:58	114	12.29	6.0	97.9	6.0	99.2	0		
2006-Oct-30	19:58	110	12.22	6.1	100.9	6.0	102.2	0		
2006-Oct-30	19:59	114	12.27	6.1	103.9	6.0	105.2	0		
2006-Oct-30	19:59	110	12.17	5.9	106.9	6.1	108.3	0		
2006-Oct-30	20:00	110	12.14	6.0	110.0	6.1	111.3	0		
2006-Oct-30	20:00	110	12.13	6.0	113.0	6.0	114.3	0		
2006-Oct-30	20:01	110	12.07	6.0	116.0	6.1	117.3	0		
2006-Oct-30	20:01	110	12.10	6.1	119.0	6.0	120.3	0		
2006-Oct-30	20:02	114	12.25	6.1	122.0	6.1	123.4	0		
2006-Oct-30	20:02	110	12.11	6.1	125.0	6.1	126.4	0		
2006-Oct-30	20:03	110	12.31	6.0	128.0	6.1	129.4	0		
2006-Oct-30	20:03	114	12.20	6.1	131.0	6.1	132.5	0		
2006-Oct-30	20:04	110	12.29	6.1	134.1	6.1	135.5	0		
2006-Oct-30	20:04	110	12.32	6.2	137.1	6.1	138.5	0		
2006-Oct-30	20:05	114	12.32	6.2	140.1	6.1	141.5	0		
2006-Oct-30	20:05	114	12.10	6.0	143.2	6.1	144.6	0		

KCC

JAN 31 2007

CONFIDENTIAL

RECEIVED

FEB 01 2007

KCC WICHITA

Well		Field				Service Date		Customer		Job Number
Preifert #B-2						06303-Oct-30		OXY RESOURCE CALIFORNIA LLC		2205552250
Date	Time	CMT TREAT PRES	CMT DENS	CMT RATE	CMT VOL	CMT TPLX RATE	CMT TPLX VOL	0	Message	
	24 hr clock	psi	lb/gal	bb/min	bbl	bb/min	bbl	0		
2006-Oct-30	20:06	114	12.04	6.1	146.2	6.1	147.7	0		
2006-Oct-30	20:06	114	12.13	6.2	149.2	6.1	150.7	0		
2006-Oct-30	20:07	119	12.31	6.1	152.2	6.1	153.8	0		
2006-Oct-30	20:07	119	12.40	6.1	155.3	6.1	156.8	0		
2006-Oct-30	20:08	119	12.32	6.0	158.3	6.1	159.8	0		
2006-Oct-30	20:08	114	12.14	6.3	161.3	6.1	162.9	0		
2006-Oct-30	20:09	114	12.15	6.7	165.6	6.1	165.9	0		
2006-Oct-30	20:09	114	12.15	5.9	168.6	6.1	168.9	0		
2006-Oct-30	20:10	119	12.25	6.0	171.6	6.1	172.0	0		
2006-Oct-30	20:10	114	12.03	5.9	174.6	6.1	175.0	0		
2006-Oct-30	20:11	110	11.92	6.1	177.6	6.1	178.0	0		
2006-Oct-30	20:11	114	12.12	6.1	180.6	6.1	181.1	0		
2006-Oct-30	20:12	119	12.11	6.0	183.6	6.1	184.1	0		
2006-Oct-30	20:12	119	12.03	6.0	186.6	6.1	187.1	0		
2006-Oct-30	20:13	124	12.35	6.0	189.6	6.1	190.2	0		
2006-Oct-30	20:13	124	12.44	6.0	192.7	6.1	193.2	0		
2006-Oct-30	20:14	124	12.37	6.1	195.6	6.1	196.2	0		
2006-Oct-30	20:14	124	12.17	6.2	198.6	6.1	199.3	0		
2006-Oct-30	20:15	128	12.37	6.1	201.6	6.1	202.3	0		
2006-Oct-30	20:15	128	12.37	5.8	204.6	6.1	205.3	0		
2006-Oct-30	20:16	128	12.21	6.0	207.6	6.1	208.4	0		
2006-Oct-30	20:16	124	12.14	6.1	210.6	6.1	211.4	0		
2006-Oct-30	20:17	124	12.18	6.1	213.6	6.1	214.4	0		
2006-Oct-30	20:17	119	11.76	6.1	216.6	6.1	217.5	0		
2006-Oct-30	20:18	133	12.80	6.0	219.6	6.1	220.6	0		
2006-Oct-30	20:18	133	12.96	6.1	220.1	6.0	221.0	0		
2006-Oct-30	20:18								Reset Total, Vol = 219.82 bbl	
2006-Oct-30	20:18	146	13.55	6.1	222.7	6.0	223.6	0		
2006-Oct-30	20:18	142	13.56	6.0	222.8	6.0	223.7	0		
2006-Oct-30	20:18								Reset Total, Vol = 2.72 bbl	
2006-Oct-30	20:18	142	13.57	6.0	0.1	6.1	0.1	0		
2006-Oct-30	20:18								End Lead Slurry	
2006-Oct-30	20:18	142	13.58	6.1	0.2	6.0	0.2	0		
2006-Oct-30	20:18								Start Mixing Tail Slurry	
2006-Oct-30	20:19	156	14.01	6.0	2.9	6.0	2.9	0		
2006-Oct-30	20:19	142	14.55	5.7	6.0	5.6	5.9	0		
2006-Oct-30	20:20	137	14.17	5.7	8.8	5.6	8.7	0		
2006-Oct-30	20:20	142	14.36	5.7	11.7	5.6	11.5	0		
2006-Oct-30	20:21	146	14.61	5.7	14.5	5.6	14.4	0		
2006-Oct-30	20:21	151	14.52	5.8	17.4	5.8	17.2	0		
2006-Oct-30	20:22	146	14.70	5.8	20.3	5.8	20.1	0		
2006-Oct-30	20:22	142	14.69	5.8	23.2	5.8	23.0	0		
2006-Oct-30	20:23	142	14.65	5.8	26.1	5.8	25.9	0		
2006-Oct-30	20:23	142	14.65	5.8	29.0	5.8	28.8	0		
2006-Oct-30	20:24	137	14.65	5.8	31.9	5.8	31.7	0		
2006-Oct-30	20:24	137	14.55	5.8	34.8	5.8	34.6	0		
2006-Oct-30	20:25	160	15.45	5.8	37.7	5.8	37.5	0		
2006-Oct-30	20:25	165	15.46	5.8	40.6	5.8	40.4	0		
2006-Oct-30	20:26	146	15.39	5.8	43.5	5.7	43.3	0		
2006-Oct-30	20:26	101	15.25	4.7	45.9	4.3	45.5	0		
2006-Oct-30	20:26								Reset Total, Vol = 46.23 bbl	
2006-Oct-30	20:26	-14	14.87	3.1	46.2	0.0	45.7	0		
2006-Oct-30	20:26	-18	14.78	2.3	0.0	0.0	0.0	0		
2006-Oct-30	20:26								End Tail Slurry	

KCC
JAN 31 2007
CONFIDENTIAL

RECEIVED
FEB 01 2007
KCC WICHITA

Well		Field			Service Date		Customer		Job Number
Preifert #B-2					06303-Oct-30		OXY RESOURCE CALIFORNIA LLC		2205552250
Date	Time	CMT TREAT PRES	CMT DENS	CMT RATE	CMT VOL	CMT TPLX RATE	CMT TPLX VOL	0	Message
	24 hr clock	psi	lb/gal	bbbl/min	bbbl	bbbl/min	bbbl	0	
2006-Oct-30	20:26								Drop Top Plug
2006-Oct-30	20:26								Start Displacement
2006-Oct-30	20:26	-14	14.73	1.7	0.1	0.0	0.0	0	
2006-Oct-30	20:27	-14	12.98	0.0	0.2	0.0	0.0	0	
2006-Oct-30	20:27	-14	11.76	0.0	0.2	0.0	0.0	0	
2006-Oct-30	20:28	-14	12.39	0.0	0.2	0.0	0.0	0	
2006-Oct-30	20:28	-14	12.15	0.0	0.2	0.0	0.0	0	
2006-Oct-30	20:29	-14	11.92	0.0	0.2	0.0	0.0	0	
2006-Oct-30	20:29	-14	11.76	0.0	0.2	0.0	0.0	0	
2006-Oct-30	20:30	-9	11.55	0.0	0.2	0.0	0.0	0	
2006-Oct-30	20:30	-9	11.52	0.0	0.2	0.0	0.0	0	
2006-Oct-30	20:31	73	9.26	4.3	0.2	3.3	0.2	0	
2006-Oct-30	20:31	69	8.89	5.7	2.2	5.5	2.7	0	
2006-Oct-30	20:32	60	8.35	5.8	5.1	5.6	5.4	0	
2006-Oct-30	20:32	55	8.33	5.9	8.1	5.6	8.3	0	
2006-Oct-30	20:33	60	8.38	6.0	11.0	5.6	11.1	0	
2006-Oct-30	20:33	64	8.41	5.9	14.0	5.6	13.9	0	
2006-Oct-30	20:34	73	8.32	5.8	16.9	5.6	16.7	0	
2006-Oct-30	20:34	78	8.33	5.8	19.8	5.6	19.5	0	
2006-Oct-30	20:35	82	8.34	5.8	22.7	5.7	22.4	0	
2006-Oct-30	20:35	96	8.33	5.8	25.6	5.7	25.2	0	
2006-Oct-30	20:36	101	8.32	5.9	28.5	5.7	28.0	0	
2006-Oct-30	20:36	124	8.33	5.8	31.5	5.7	30.9	0	
2006-Oct-30	20:37	124	8.33	5.9	34.4	5.7	33.7	0	
2006-Oct-30	20:37	133	8.32	5.9	37.3	5.7	36.6	0	
2006-Oct-30	20:38	146	8.32	5.9	40.2	5.7	39.4	0	
2006-Oct-30	20:38	151	8.32	5.9	43.2	5.7	42.3	0	
2006-Oct-30	20:39	179	8.33	5.9	46.1	5.8	45.1	0	
2006-Oct-30	20:39	179	8.32	5.9	49.0	5.8	48.0	0	
2006-Oct-30	20:40	201	8.33	5.9	52.1	5.8	51.0	0	
2006-Oct-30	20:40	197	8.33	5.9	55.0	5.8	53.9	0	
2006-Oct-30	20:41	215	8.32	5.9	58.0	5.8	56.7	0	
2006-Oct-30	20:41	229	8.32	5.9	60.9	5.8	59.6	0	
2006-Oct-30	20:42	243	8.32	5.9	63.9	5.8	62.5	0	
2006-Oct-30	20:42	256	8.32	5.9	66.8	5.8	65.4	0	
2006-Oct-30	20:43	284	8.32	5.9	69.8	5.8	68.3	0	
2006-Oct-30	20:43	311	8.33	5.9	72.7	5.8	71.2	0	
2006-Oct-30	20:44	311	8.33	5.9	75.7	5.9	74.1	0	
2006-Oct-30	20:44	339	8.33	6.0	78.6	5.9	77.1	0	
2006-Oct-30	20:45	371	8.33	6.0	81.6	5.9	80.0	0	
2006-Oct-30	20:45	375	8.33	6.0	84.6	5.9	82.9	0	
2006-Oct-30	20:46	394	8.33	6.0	87.6	5.9	85.9	0	
2006-Oct-30	20:46	426	8.33	6.0	90.6	5.9	88.9	0	
2006-Oct-30	20:47	371	8.33	3.5	93.4	3.0	91.5	0	
2006-Oct-30	20:47	362	8.33	3.0	94.9	3.0	93.0	0	
2006-Oct-30	20:48	398	8.33	3.0	96.5	3.0	94.5	0	
2006-Oct-30	20:48	412	8.33	3.0	98.0	3.0	96.0	0	
2006-Oct-30	20:49	417	8.33	2.6	99.4	2.5	97.3	0	
2006-Oct-30	20:49	417	8.33	2.5	100.6	2.5	98.6	0	
2006-Oct-30	20:50	407	8.33	2.5	101.9	2.5	99.8	0	
2006-Oct-30	20:50	439	8.32	2.5	103.1	2.5	101.0	0	
2006-Oct-30	20:51	435	8.32	2.5	104.4	2.5	102.3	0	
2006-Oct-30	20:51	449	8.32	2.5	105.7	2.5	103.5	0	
2006-Oct-30	20:52	453	8.32	2.5	106.9	2.4	104.8	0	

KCC
JAN 31 2007
CONFIDENTIAL

RECEIVED

FEB 01 2007

Well		Field		Service Date		Customer		Job Number	
Preifert #B-2				06303-Oct-30		OXY RESOURCE CALIFORNIA LLC		2205552250	
Date	Time	CMT TREAT PRES	CMT DENS	CMT RATE	CMT VOL	CMT TPLX RATE	CMT TPLX VOL	0	Message
	24 hr clock	psi	lb/gal	bb/min	bbbl	bbbl/min	bbbl	0	
2006-Oct-30	20:52	1112	8.32	0.0	107.4	0.0	105.1	0	
2006-Oct-30	20:53	1025	8.32	0.0	107.4	0.0	105.1	0	
2006-Oct-30	20:53	-5	8.32	0.0	107.4	0.0	105.1	0	
2006-Oct-30	20:53								Reset Total, Vol = 107.23 bbl
2006-Oct-30	20:53	-5	8.32	0.0	107.4	0.0	105.1	0	
2006-Oct-30	20:53								Bump Top Plug
2006-Oct-30	20:53	-5	8.32	0.0	0.0	0.0	0.0	0	
2006-Oct-30	20:53	-5	8.32	0.0	0.0	0.0	0.0	0	
2006-Oct-30	20:53								End Displacement
2006-Oct-30	20:54	5	8.32	0.0	0.0	0.0	0.0	0	
2006-Oct-30	20:54								Float held
2006-Oct-30	20:54								End Job
2006-Oct-30	20:54	14	8.32	0.0	0.0	0.0	0.0	0	
2006-Oct-30	20:54	14	8.32	0.0	0.0	0.0	0.0	0	

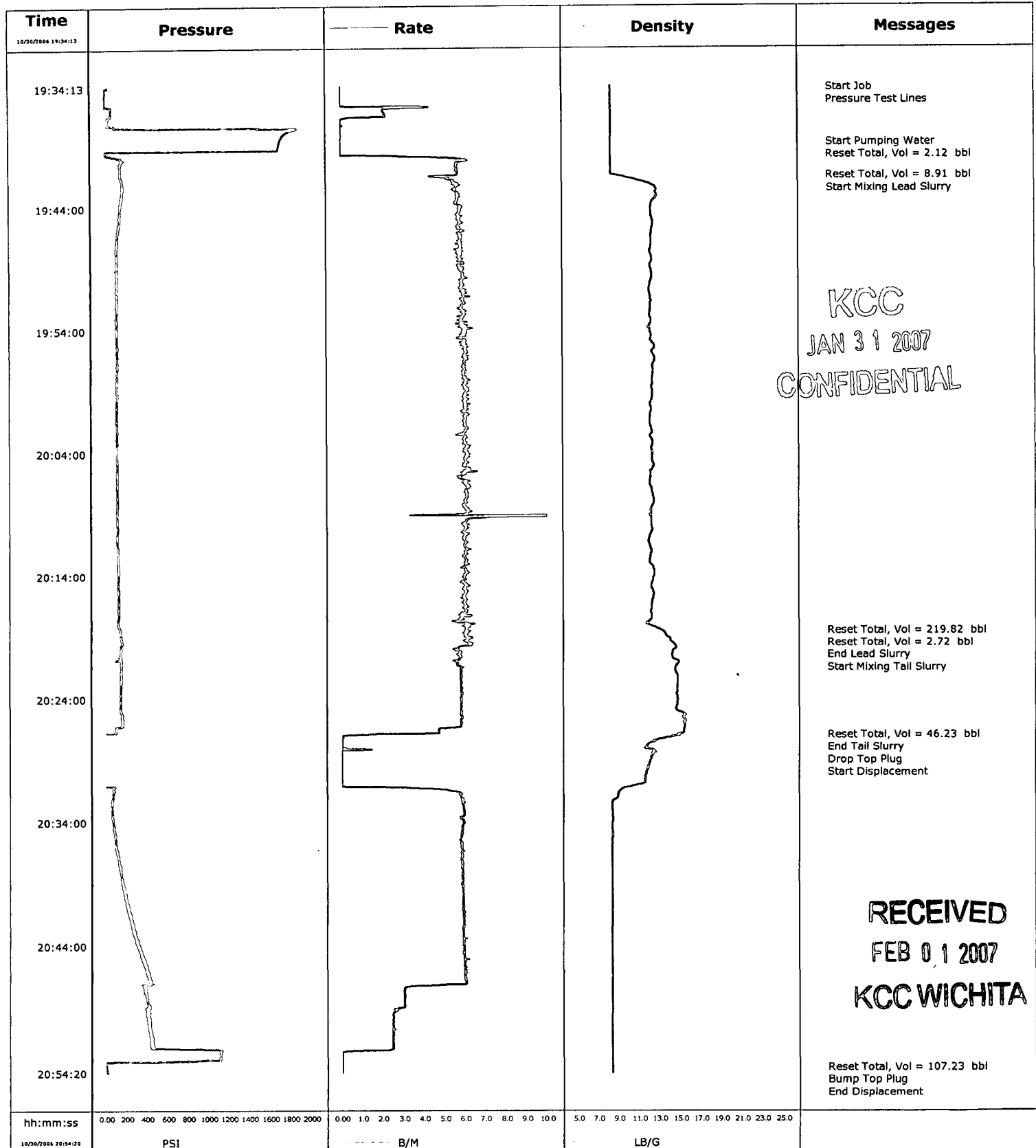
Post Job Summary

Average Pump Rates, bpm				Volume of Fluid Injected, bbl			
Slurry	N2	Mud	Maximum Rate	Total Slurry	Mud	Spacer	N2
4			6	269		10	
Treating Pressure Summary, psi				Breakdown Fluid			
Maximum	Final	Average	Bump Plug to	Breakdown	Volume	Density	
450		200	1100		bbbl	8.34 lb/gal	
Avg. N2 Percent	Designed Slurry Volume	Displacement	Mix Water Temp	<input checked="" type="checkbox"/> Cement Circulated to Surface?	Volume	bbbl	
%	274 bbl	107 bbl	65 °F	<input type="checkbox"/> Washed Thru Perfs	To	ft	
Customer or Authorized Representative			Schlumberger Supervisor		<input type="checkbox"/> Circulation Lost	<input checked="" type="checkbox"/> Job Completed	
Bevans, Ron			Grigoriev, Valeriy				

KCC
 JAN 31 2007
 CONFIDENTIAL

RECEIVED
 FEB 01 2007
 KCC WICHITA
 Page 5 of 5

Well	Preifert B-2	Client	Oxy
Field		SIR No.	2205552250
Engineer	Val Grigoriev	Job Type	8 5/8" Surface
Country	United States	Job Date	10-30-2006





~~1-31-08~~

OXY USA Inc.
1701 N. Kansas, Liberal, KS 67901
P.O. Box 2528, Liberal, KS 67905-2528

1-31-09

January 31, 2007

Kansas State Corporation Commission
Conservation Division, Finney State Office Building
130 S. Market, Room 2078
Wichita, KS 67202-3802

KCC
JAN 31 2007
CONFIDENTIAL

RE: Preifert B-2
SE/4 9-34S-33W
Seward County, Kansas

Dear Sir:

Please file confidential. The following items are being submitted for the above referenced well which was been recently drilled and abandoned.

1. KANSAS STATE FORM ACO-1 + 2 copies
2. CEMENT TICKETS
3. GEOLOGICAL REPORT
4. A SET OF ELECTRIC LOGS
5. WELL PLUGGING RECORD FORM CP-4

If there are any questions or you require further information, please contact me at the above address or by phone at (620) 629-4229.

Sincerely,

Rafael Bacigalupo
Capitol Projects

Enclosures

Cc: OXY - Houston
OXY - Well File

RECEIVED
FEB 01 2007
KCC WICHITA