

KCC  
APR 18 2007  
CONFIDENTIAL

CONFIDENTIAL

KANSAS CORPORATION COMMISSION  
OIL & GAS CONSERVATION DIVISION

ORIGINAL

4/18/08

Form ACO-1  
September 1999

WELL COMPLETION FORM  
WELL HISTORY - DESCRIPTION OF WELL & LEASE

Form Must Be Typed

Operator: License # 5447  
Name: OXY USA Inc.  
Address: P.O. Box 2528  
City/State/Zip: Liberal, KS 67905  
Purchaser: NA  
Operator Contact Person: Rafael Bacigalupo  
Phone: (620) 629-4232  
Contractor: Name: Murfin Drilling Co., Inc.  
License: 30606  
Wellsite Geologist: NA  
Designate Type of Completion:  
 New Well  Re-Entry  Workover  
 Oil  SWD  SIOW  Temp. Abd.  
 Gas  ENHR  SIGW  
 Dry  Other (Core, WSW, Expl, Cathodic, etc)  
If Workover/Re-entry: Old Well Info as follows:  
Operator: \_\_\_\_\_  
Well Name: \_\_\_\_\_

API No. 15 - 081-21690-0000  
County: Haskell  
NE - SE - SE Sec 36 Twp 27S S. R. 34W  
1300 feet from  / N (circle one) Line of Section  
600 feet from  / W (circle one) Line of Section  
Footages Calculated from Nearest Outside Section Corner:  
(circle one) NE  NW SW  
Lease Name: Branstetter Chester Unit Well #: 106  
Field Name: Branstetter Chester Unit  
Producing Formation: Chester  
Elevation: Ground: 3026 Kelly Bushing: 3038  
Total Depth: 5570 Plug Back Total Depth: 5520  
Amount of Surface Pipe Set and Cemented at 2007.5 feet  
Multiple Stage Cementing Collar Used?  Yes  No  
If yes, show depth set 3541  
If Alternate II completion, cement circulated from \_\_\_\_\_  
feet depth to \_\_\_\_\_ w/ \_\_\_\_\_ sx cmt.

Original Comp. Date: \_\_\_\_\_ Original Total Depth: \_\_\_\_\_  
 Deepening  Re-perf.  Conv. To Enhr./SWD  
 Plug Back  Plug Back Total Depth  
 Commingled  Docket No. \_\_\_\_\_  
 Dual Completion  Docket No. \_\_\_\_\_  
 Other (SWD or Enhr.?)  Docket No. \_\_\_\_\_  
12/27/06 01/11/07 02/02/06  
Spud Date or Date Reached TD Completion Date or Recompletion Date

Drilling Fluid Management Plan Att I NH 5 5 08  
(Data must be collected from the Reserve Pit)  
Chloride content 900 mg/l ppm Fluid volume 1500 bbls  
Dewatering method used Evaporation  
Location of fluid disposal if hauled offsite: \_\_\_\_\_  
Operator Name: \_\_\_\_\_  
Lease Name: \_\_\_\_\_ License No.: \_\_\_\_\_  
Quarter \_\_\_\_\_ Sec. \_\_\_\_\_ Twp, \_\_\_\_\_ S. R.  East  West  
County: \_\_\_\_\_ Docket No.: \_\_\_\_\_

INSTRUCTIONS: An original and two copies of this form shall be filed with the Kansas Corporation Commission, 130 S. Market - Room 2078, Wichita, Kansas 6702, within 120 days of the spud date, recompletion, workover or conversion of a well. Rule 82-3-130, 82-3-106 and 82-3-107 apply. Information of side two of this form will be held confidential for a period of 12 months if requested in writing and submitted with the form (see rule 82-3-107 for confidentiality in excess of 12 months). One copy of all wireline logs and geologist well report shall be attached with this form. ALL CEMENTING TICKETS MUST BE ATTACHED. Submit CP-4 form with all plugged wells. Submit CP-111 form with all temporarily abandoned wells.

All requirements of the statutes, rules and regulations promulgated to regulate the oil and gas industry have been fully complied with and the statements herein are complete and correct to the best of my knowledge.

Signature: \_\_\_\_\_  
Title: Capital Projects Date 04/17/2007  
Subscribed and sworn to before me this 17th day of April  
20 07  
Notary Public: Anita Peterson  
Date Commission Expires: Oct. 1, 2009

ANITA PETERSON  
Notary Public - State of Kansas  
My Appt. Expires October 1, 2009

KCC Office Use Only  
 Letter of Confidentiality Attached  
If Denied, Yes  Date: \_\_\_\_\_  
 Wireline Log Received  
 Geologist Report Received  
 UIC Distribution  
RECEIVED  
KANSAS CORPORATION COMMISSION

APR 19 2007

CONSERVATION DIVISION  
WICHITA, KS

Operator Name: OXY USA Inc. Lease Name: Branstetter Chester Unit Well #: 106

Sec. 36 Twp. 27 S. R. 34W  East  West County: Haskell

**Instructions:** Show important tops and base of formations penetrated. Detail all cores. Report all final copies of drill stems tests giving interval tested, time tool open and closed, flowing and shut-in pressures, whether shut-in pressure reached static level, hydrostatic pressures, bottom hole temperature, fluid recovery, and flow rates if gas to surface test, along with final chart(s). Attach extra sheet if more space is needed. Attach copy of all Electric Wireline Logs surveyed. Attach final geological well site report.

Drill Stem Tests Taken <input type="checkbox"/> Yes <input checked="" type="checkbox"/> No <i>(Attach Additional Sheets)</i>  Samples Sent to Geological Survey <input type="checkbox"/> Yes <input checked="" type="checkbox"/> No  Cores Taken <input type="checkbox"/> Yes <input checked="" type="checkbox"/> No  Electric Log Run <input checked="" type="checkbox"/> Yes <input type="checkbox"/> No <i>(Submit Copy)</i>  List All E. Logs Run: <u>Cement Bond Log</u> <u>Microlog</u> <u>Spectral Density Dual Spaced Neutron</u> <u>High Resolution Induction</u> <u>Annular Hole Volume Plot</u>	<table border="1" style="width:100%; border-collapse: collapse;"> <tr> <td><input checked="" type="checkbox"/> Log</td> <td>Formation (Top), Depth and Datum</td> <td><input type="checkbox"/> Sample</td> </tr> <tr> <td>Name</td> <td>Top</td> <td>Datum</td> </tr> <tr> <td>Morrow</td> <td>5205</td> <td>-2167</td> </tr> <tr> <td>Chester</td> <td>5320</td> <td>-2282</td> </tr> <tr> <td>St Genevieve</td> <td>5430</td> <td>-2392</td> </tr> <tr> <td>St Louis</td> <td>5440</td> <td>-2402</td> </tr> </table>	<input checked="" type="checkbox"/> Log	Formation (Top), Depth and Datum	<input type="checkbox"/> Sample	Name	Top	Datum	Morrow	5205	-2167	Chester	5320	-2282	St Genevieve	5430	-2392	St Louis	5440	-2402
<input checked="" type="checkbox"/> Log	Formation (Top), Depth and Datum	<input type="checkbox"/> Sample																	
Name	Top	Datum																	
Morrow	5205	-2167																	
Chester	5320	-2282																	
St Genevieve	5430	-2392																	
St Louis	5440	-2402																	

CASING RECORD <input checked="" type="checkbox"/> New <input type="checkbox"/> Used							
Report all strings set-conductor, surface, intermediate, production, etc.							
Purpose of String	Size Hole Drilled	Size Casing Set (in. O.D.)	Weight Lbs./ft.	Setting Depth	Type of Cement	# Sacks Used	Type and Percent Additives
Conductor					C		
Surface	12 1/4	8 5/8	24	2007	C	570	35/65 Poz C + Additives
					C	195	Class C + Additives
Production	7 7/8	5 1/2	17	5571	C	150	D903 + additives
					C	140	50/50 Poz H + additives
					C	75	Poz H + additives

**ADDITIONAL CEMENTING / SQUEEZE RECORD**

Purpose:	Depth Top Bottom	Type of Cement	#Sacks Used	Type and Percent Additives
<input type="checkbox"/> Perforate				
<input type="checkbox"/> Protect Casing				
<input type="checkbox"/> Plug Back TD				
<input type="checkbox"/> Plug off Zone				

Shots Per Foot	PERFORATION RECORD - Bridge Plugs Set/type Specify Footage of Each Interval Perforated	Acid, Fracture, Shot, Cement Squeeze Record (Amount and Kind of Material Used)	Depth
4	5371-5378 & 5401-5428	3400 gal 15% HCL acid + additives	

TUBING RECORD	Size 2 3/8	Set At 5468	Packer At	Liner Run <input type="checkbox"/> Yes <input checked="" type="checkbox"/> No
---------------	---------------	----------------	-----------	--

Date of First, Resumed Production, SWD or Enhr. 02/03/2007	Producing Method <input type="checkbox"/> Flowing <input checked="" type="checkbox"/> Pumping <input type="checkbox"/> Gas Lift <input type="checkbox"/> Other (Explain) P&A
---	---

Estimated Production Per 24 Hours	Oil BBLS 143	Gas Mcf 0	Water Bbbs 30	Gas-Oil Ratio	Gravity
-----------------------------------	-----------------	--------------	------------------	---------------	---------

Disposition of Gas <input type="checkbox"/> Vented <input type="checkbox"/> Sold <input checked="" type="checkbox"/> Used on Lease <i>(If vented, Submit ACO-18)</i>	METHOD OF COMPLETION <input type="checkbox"/> Open Hole <input checked="" type="checkbox"/> Perf. <input type="checkbox"/> Dually Comp. <input type="checkbox"/> Commingled <input type="checkbox"/> Other (Specify) _____	Production Interval _____
--	--	------------------------------

## Cementing Service Report

Customer <b>OXY RESOURCE CALIFORNIA LLC</b>				Job Number <b>2205552581</b>			
Well <b>BRANSTETTER CHESTER 106W</b>		Location (legal) <b>SEC 36-T27N-R34W</b>		Schlumberger Location <b>Perryton, TX</b>		Job Start	
Field <b>PLEASANT P</b>		Formation Name/Type		Deviation <b>°</b>		Well MD <b>12.3 in</b>	
County <b>HASKELL</b>		State/Province <b>KANSAS</b>		BHP <b>psi</b>		Well TVD <b>2,007 ft</b>	
Well Master: <b>0630866575</b>		API / UWI: <b>15081216900000</b>		BHST <b>98 °F</b>		BHCT <b>°F</b>	
Rig Name <b>MURFIN 20</b>		Drilled For <b>Oil &amp; Gas</b>		Service Via <b>Land</b>		Casing/Liner	
Offshore Zone		Well Class <b>New</b>		Well Type <b>Development</b>		Depth, ft <b>2007</b>	
Drilling Fluid Type		Max. Density <b>lb/gal</b>		Plastic Viscosity <b>cp</b>		Size, in <b>8.63</b>	
Service Line <b>Cementing</b>		Job Type <b>Cem Surface Casing</b>		Weight, lb/ft <b>24</b>		Grade <b>K55</b>	
Max. Allowed Tubing Pressure <b>1500 psi</b>		Max. Allowed Ann. Pressure <b>psi</b>		Wellhead Connection <b>8 5/8" H&amp;SM</b>		Thread <b>8RD</b>	
Service Instructions <b>CEMENT 8 5/8" SURFACE CASING WITH: 10 BBL FRESH WATER 570 SK 35:65 POZ C + 6% D020 + 2% S001 + 0.25 pps D130 195 SK CLASS C + 2% S001 + 0.125 pps D130 DISPLACE WITH FRESH WATER</b>						Perforations/Open Hole	
Casing/Tubing Secured <input checked="" type="checkbox"/>		1 Hole Volume Circulated prior to Cementing: <input type="checkbox"/>		Top, ft		Bottom, ft	
Lift Pressure: <b>650 psi</b>		Pipe Rotated <input type="checkbox"/>		Pipe Reciprocated <input type="checkbox"/>		spf	
No. Centralizers:		Top Plugs: <b>1</b>		Bottom Plugs:		No. of Shots	
Cement Head Type: <b>Single</b>		Job Scheduled For: <b>2006-Dec-28 23:30</b>		Arrived on Location:		Leave Location:	
Stage Tool Type		Stage Tool Depth: <b>ft</b>		Collar Type:		Collar Depth: <b>ft</b>	
Shoe Type:		Shoe Depth: <b>ft</b>		Squeeze Job		Squeeze Type	
Tool Type:		Tool Depth: <b>ft</b>		Tail Pipe Size: <b>in</b>		Tail Pipe Depth: <b>ft</b>	
Squeeze Total Vol: <b>bbl</b>		Squeeze Total Vol: <b>bbl</b>		Squeeze Total Vol: <b>bbl</b>		Squeeze Total Vol: <b>bbl</b>	
Treat Down <b>Casing</b>		Displacement <b>124.99 bbl</b>		Packer Type		Packer Depth <b>ft</b>	
Tubing Vol. <b>bbl</b>		Casing Vol. <b>bbl</b>		Annular Vol. <b>bbl</b>		Open Hole Vol. <b>bbl</b>	
Casing Tools		Squeeze Job		Diameter <b>in</b>		Total Interval <b>ft</b>	

Date	Time	Treating Pressure	Density	CMT RATE	CMT VOL	CS NRD RATE	CS NRD TOTAL	0	Message
	24 hr clock	psi	lb/gal	bbl/min	bbl	bbl/min	bbl		
2006-Dec-29	1:46	9	8.32	1.2	0.0	0.3	0.0	0	
2006-Dec-29	1:46	9	8.32	0.0	0.0	0.3	0.1	0	
2006-Dec-29	1:46								Start Pumping Spacer
2006-Dec-29	1:46								Start Job
2006-Dec-29	1:46	5	8.32	0.0	0.0	0.4	0.1	0	
2006-Dec-29	1:46	5	8.32	0.0	0.0	0.5	0.1	0	
2006-Dec-29	1:46								Pressure Test Lines
2006-Dec-29	1:46	23	8.32	0.0	0.0	1.0	0.3	0	
2006-Dec-29	1:47	69	8.31	0.0	0.0	5.7	3.2	0	
2006-Dec-29	1:47	73	8.31	0.0	0.0	3.4	5.7	0	
2006-Dec-29	1:48	78	8.31	0.0	0.0	0.0	6.4	0	
2006-Dec-29	1:48	78	8.31	0.0	0.0	0.0	6.4	0	
2006-Dec-29	1:49	1772	8.31	0.0	0.1	0.0	6.4	0	
2006-Dec-29	1:49	1721	8.31	0.0	0.1	0.0	6.4	0	
2006-Dec-29	1:50	1698	8.32	0.0	0.1	0.0	6.4	0	
2006-Dec-29	1:50	14	8.22	0.0	0.1	0.0	6.4	0	
2006-Dec-29	1:51	73	8.12	3.6	0.2	4.4	6.8	0	
2006-Dec-29	1:51	73	8.25	3.7	2.0	3.8	8.8	0	
2006-Dec-29	1:52								End Spacer
2006-Dec-29	1:52	224	8.29	5.6	4.3	5.9	11.1	0	
2006-Dec-29	1:52								Start Mixing Lead Spill
2006-Dec-29	1:52	179	8.29	5.6	4.6	5.7	11.4	0	

**KCC**  
**APR 18 2007**  
**CONFIDENTIAL**  
**RECEIVED**  
**KANSAS CORPORATION COMMISSION**  
**APR 19 2007**  
 CONSERVATION DIVISION  
 WICHITA, KS

Well		Field			Service Date		Customer		Job Number
BRANSTETTER CHESTER #106W		PLEASANT P					OXY RESOURCE CALIFORNIA LLC		2205552581
Date	Time	Treating Pressure	Density	CMT RATE	CMT VOL	CS NRD RATE	CS NRD TOTAL	0	Message
	24 hr clock	psi	lb/gal	bbl/min	bbl	bbl/min	bbl	0	
2006-Dec-29	1:52	220	8.60	5.8	7.5	6.2	14.4	0	
2006-Dec-29	1:52								Reset Total, Vol = 7.56 bbl
2006-Dec-29	1:52	220	8.61	5.8	7.6	6.2	14.5	0	
2006-Dec-29	1:53	220	9.12	5.9	2.8	6.3	3.1	0	
2006-Dec-29	1:53								Reset Total, Vol = 3.38 bbl
2006-Dec-29	1:53	197	9.22	5.4	3.4	5.8	3.7	0	
2006-Dec-29	1:53	201	9.53	5.4	2.1	5.8	2.3	0	
2006-Dec-29	1:54	211	9.81	5.4	4.9	5.8	5.2	0	
2006-Dec-29	1:54	206	9.95	5.5	7.6	5.7	8.1	0	
2006-Dec-29	1:55	211	10.01	5.6	10.4	5.8	11.0	0	
2006-Dec-29	1:55	211	10.18	5.5	13.1	5.9	13.9	0	
2006-Dec-29	1:56	220	10.23	5.6	16.0	6.1	16.9	0	
2006-Dec-29	1:56	215	10.02	5.7	18.8	5.9	19.9	0	
2006-Dec-29	1:57	133	10.05	3.7	21.6	5.2	22.8	0	
2006-Dec-29	1:57	156	11.44	4.0	23.4	4.2	25.0	0	
2006-Dec-29	1:58	179	11.71	5.1	25.8	5.4	27.5	0	
2006-Dec-29	1:58	174	11.76	5.2	28.4	5.4	30.2	0	
2006-Dec-29	1:59	192	12.01	5.2	31.0	5.7	32.9	0	
2006-Dec-29	1:59	179	12.24	5.2	33.6	5.5	35.7	0	
2006-Dec-29	2:00	174	11.74	5.2	36.2	5.5	38.4	0	
2006-Dec-29	2:00	192	12.31	5.2	38.8	6.0	41.3	0	
2006-Dec-29	2:01	201	13.36	5.3	41.4	5.7	44.1	0	
2006-Dec-29	2:01	183	13.36	5.3	44.1	5.4	46.9	0	
2006-Dec-29	2:02	174	13.20	5.3	46.7	5.5	49.6	0	
2006-Dec-29	2:02	156	12.92	5.3	49.3	5.4	52.3	0	
2006-Dec-29	2:03	156	12.66	5.3	52.0	5.4	55.0	0	
2006-Dec-29	2:03	146	12.44	5.3	54.6	5.5	57.8	0	
2006-Dec-29	2:04	146	12.27	5.3	57.3	5.5	60.5	0	
2006-Dec-29	2:04	146	12.19	5.3	59.9	5.6	63.3	0	
2006-Dec-29	2:05	151	12.28	5.3	62.5	5.7	66.0	0	
2006-Dec-29	2:05	142	12.33	5.3	65.2	5.6	68.8	0	
2006-Dec-29	2:06	146	12.06	5.3	67.8	5.3	71.5	0	
2006-Dec-29	2:06	183	11.82	5.3	70.5	5.7	74.3	0	
2006-Dec-29	2:07	179	12.01	5.3	73.1	5.6	77.1	0	
2006-Dec-29	2:07	174	11.66	5.3	75.8	5.6	79.9	0	
2006-Dec-29	2:08	179	11.95	5.4	78.5	5.8	82.7	0	
2006-Dec-29	2:08	183	12.29	5.3	81.1	5.7	85.6	0	
2006-Dec-29	2:09	174	12.49	5.3	83.8	5.6	88.4	0	
2006-Dec-29	2:09	179	12.25	5.3	86.5	5.4	91.2	0	
2006-Dec-29	2:10	165	11.85	5.3	89.2	5.5	93.9	0	
2006-Dec-29	2:10	169	11.90	5.4	91.8	5.7	96.7	0	
2006-Dec-29	2:11	169	12.23	5.4	94.5	5.7	99.5	0	
2006-Dec-29	2:11	174	12.29	5.4	97.2	5.6	102.4	0	
2006-Dec-29	2:12	174	12.16	5.4	99.9	5.5	105.2	0	
2006-Dec-29	2:12	169	12.05	5.4	102.6	5.6	107.9	0	
2006-Dec-29	2:13	165	11.92	5.4	105.3	5.6	110.7	0	
2006-Dec-29	2:13	169	11.92	5.4	107.9	5.7	113.5	0	
2006-Dec-29	2:14	165	12.17	5.4	110.6	5.7	116.4	0	
2006-Dec-29	2:14	174	12.30	5.4	113.3	5.7	119.2	0	
2006-Dec-29	2:15	169	12.37	5.4	116.0	5.7	122.1	0	
2006-Dec-29	2:15	169	12.40	5.4	118.7	5.7	124.9	0	
2006-Dec-29	2:16	151	12.36	5.4	121.4	5.5	127.7	0	
2006-Dec-29	2:16	174	12.41	5.4	124.1	5.6	130.4	0	
2006-Dec-29	2:17	169	12.36	5.4	126.8	5.4	133.2	0	

**KCC**  
**APR 18 2007**  
**CONFIDENTIAL**

**RECEIVED**  
**KANSAS CORPORATION COMMISSION**

**APR 19 2007**

Well		Field		Service Date		Customer		Job Number	
BRANSTETTER CHESTER #106W		PLEASANT P				OXY RESOURCE CALIFORNIA LLC		2205552581	
Date	Time	Treating Pressure	Density	CMT RATE	CMT VOL	CS NRD RATE	CS NRD TOTAL	0	Message
	24 hr clock	psi	lb/gal	bbl/min	bbl	bbl/min	bbl	0	
2006-Dec-29	2:17	151	11.79	5.4	129.5	5.4	135.9	0	
2006-Dec-29	2:18	156	11.58	5.4	132.2	5.8	138.7	0	
2006-Dec-29	2:18	169	12.30	5.4	134.9	5.9	141.7	0	
2006-Dec-29	2:19	156	12.17	5.4	137.6	5.4	144.5	0	
2006-Dec-29	2:19	151	11.55	5.4	140.3	5.5	147.2	0	
2006-Dec-29	2:20	156	11.65	5.4	143.0	5.8	150.1	0	
2006-Dec-29	2:20	156	11.52	5.4	145.7	5.7	153.0	0	
2006-Dec-29	2:21	169	11.84	5.5	148.4	5.7	155.9	0	
2006-Dec-29	2:21	160	11.80	5.4	151.2	5.6	158.7	0	
2006-Dec-29	2:22	174	12.08	5.4	153.9	5.9	161.6	0	
2006-Dec-29	2:22	188	12.60	5.4	156.6	5.8	164.5	0	
2006-Dec-29	2:23	183	12.65	5.4	159.3	5.6	167.4	0	
2006-Dec-29	2:23	174	12.43	5.4	162.0	5.6	170.2	0	
2006-Dec-29	2:24	165	12.27	5.4	164.7	5.7	173.0	0	
2006-Dec-29	2:24	169	12.18	5.4	167.4	5.7	175.8	0	
2006-Dec-29	2:25	169	12.14	5.5	170.2	5.7	178.6	0	
2006-Dec-29	2:25	160	12.14	5.4	172.9	5.7	181.5	0	
2006-Dec-29	2:26	165	12.13	5.4	175.6	5.6	184.3	0	
2006-Dec-29	2:26	169	12.17	5.4	178.3	5.7	187.1	0	
2006-Dec-29	2:27	165	12.18	5.4	181.1	5.7	190.0	0	
2006-Dec-29	2:27	169	12.21	5.5	183.8	5.8	192.8	0	
2006-Dec-29	2:28	169	12.30	5.5	186.5	5.6	195.7	0	
2006-Dec-29	2:28	174	12.35	5.5	189.3	5.7	198.6	0	
2006-Dec-29	2:29	174	12.40	5.5	192.0	5.8	201.4	0	
2006-Dec-29	2:29	174	12.43	5.5	194.8	5.8	204.3	0	
2006-Dec-29	2:30	179	12.40	5.5	197.6	5.8	207.2	0	
2006-Dec-29	2:30	169	12.29	5.5	200.3	5.8	210.1	0	
2006-Dec-29	2:31	174	12.24	5.5	203.1	5.9	212.9	0	
2006-Dec-29	2:31	183	12.69	5.6	205.9	5.8	215.9	0	
2006-Dec-29	2:32	183	13.16	5.6	208.6	6.0	218.9	0	
2006-Dec-29	2:32	174	13.27	5.6	211.4	5.7	221.8	0	
2006-Dec-29	2:33	160	13.07	5.6	212.6	5.6	223.0	0	
2006-Dec-29	2:33								End Lead Slurry
2006-Dec-29	2:33	165	13.04	5.6	212.7	5.6	223.1	0	
2006-Dec-29	2:33								Start Mixing Tail Slurry
2006-Dec-29	2:33								Reset Total, Vol = 213.26 bbl
2006-Dec-29	2:33	160	12.88	5.6	213.3	5.5	223.6	0	
2006-Dec-29	2:33	169	12.78	5.6	0.9	5.8	1.0	0	
2006-Dec-29	2:33	197	13.47	5.6	3.7	6.1	4.0	0	
2006-Dec-29	2:34	220	14.46	5.6	6.5	5.9	7.0	0	
2006-Dec-29	2:34	206	14.66	5.5	9.3	5.8	9.9	0	
2006-Dec-29	2:35	206	14.69	5.6	12.1	5.8	12.8	0	
2006-Dec-29	2:35	206	14.68	5.6	14.9	5.8	15.7	0	
2006-Dec-29	2:36	197	14.61	5.5	17.7	5.7	18.6	0	
2006-Dec-29	2:36	192	14.56	5.6	20.4	5.8	21.5	0	
2006-Dec-29	2:37	192	14.59	5.6	23.2	5.8	24.3	0	
2006-Dec-29	2:37	197	14.58	5.6	26.0	5.8	27.2	0	
2006-Dec-29	2:38	201	14.56	5.6	28.8	5.8	30.2	0	
2006-Dec-29	2:38	192	14.48	5.6	31.6	5.8	33.1	0	
2006-Dec-29	2:39	183	14.39	5.6	34.4	5.8	36.0	0	
2006-Dec-29	2:39	183	14.32	5.6	37.2	5.8	38.9	0	
2006-Dec-29	2:40	101	14.33	3.8	39.8	4.0	41.6	0	
2006-Dec-29	2:40	105	14.91	3.8	41.7	4.1	43.7	0	
2006-Dec-29	2:41	101	15.24	3.8	43.6	4.0	45.7	0	

**KCC**  
**APR 18 2007**  
**CONFIDENTIAL**

**RECEIVED**  
**KANSAS CORPORATION COMMISSION**  
**APR 19 2007**  
**CONSERVATION DIVISION**  
**WICHITA KS**

Well		Field			Service Date		Customer		Job Number
BRANSTETTER CHESTER #108W		PLEASANT P					OXY RESOURCE CALIFORNIA LLC		2205552581
Date	Time	Treating Pressure	Density	CMT RATE	CMT VOL	CS NRD RATE	CS NRD TOTAL	0	Message
	24 hr clock	psi	lb/gal	bbf/min	bbf	bbf/min	bbf	0	
2006-Dec-29	2:41	101	15.36	3.8	45.5	3.9	47.7	0	
2006-Dec-29	2:42	124	15.00	3.7	47.3	4.5	49.7	0	
2006-Dec-29	2:42	119	14.94	0.0	47.7	4.6	50.4	0	
2006-Dec-29	2:42								End Tail Slurry
2006-Dec-29	2:42								Drop Top Plug
2006-Dec-29	2:42	119	14.94	0.0	47.7	4.6	50.5	0	
2006-Dec-29	2:42								Start Displacement
2006-Dec-29	2:42	119	14.94	0.0	47.7	4.6	50.6	0	
2006-Dec-29	2:42								Reset Total, Vol = 47.73 bbl
2006-Dec-29	2:42	9	14.86	0.0	47.7	0.0	51.0	0	
2006-Dec-29	2:42	18	14.62	0.0	0.0	0.0	0.0	0	
2006-Dec-29	2:43	55	14.65	0.0	0.0	0.1	0.0	0	
2006-Dec-29	2:43	60	14.69	0.0	0.0	0.4	0.0	0	
2006-Dec-29	2:44	55	9.47	0.0	0.0	0.0	0.1	0	
2006-Dec-29	2:44	69	9.71	0.0	0.0	0.0	0.1	0	
2006-Dec-29	2:45	55	6.66	0.0	0.0	0.4	0.2	0	
2006-Dec-29	2:45	78	6.65	3.6	0.2	0.4	0.4	0	
2006-Dec-29	2:46	146	8.17	5.4	2.8	6.4	2.8	0	
2006-Dec-29	2:46	128	8.67	5.5	5.5	5.6	5.8	0	
2006-Dec-29	2:47	114	8.43	5.8	8.3	5.9	8.6	0	
2006-Dec-29	2:47	114	8.43	6.0	11.2	6.2	11.5	0	
2006-Dec-29	2:48	124	8.48	6.0	14.2	6.3	14.6	0	
2006-Dec-29	2:48	114	8.38	6.1	17.2	6.3	17.8	0	
2006-Dec-29	2:49	114	8.35	6.1	20.3	6.3	20.9	0	
2006-Dec-29	2:49	124	8.37	6.0	23.3	6.3	24.1	0	
2006-Dec-29	2:50	114	8.35	5.5	26.1	5.7	27.0	0	
2006-Dec-29	2:50	128	8.32	5.5	28.8	5.4	29.8	0	
2006-Dec-29	2:51	142	8.32	5.5	31.6	5.7	32.6	0	
2006-Dec-29	2:51	160	8.33	5.6	34.4	5.6	35.5	0	
2006-Dec-29	2:52	169	8.32	5.6	37.2	5.4	38.3	0	
2006-Dec-29	2:52	188	8.31	5.7	40.0	5.8	41.1	0	
2006-Dec-29	2:53	188	8.31	5.6	42.9	5.7	43.9	0	
2006-Dec-29	2:53	206	8.31	5.7	45.7	5.7	46.8	0	
2006-Dec-29	2:54	-3744	-6.25	0.0	46.7	0.0	47.8	0	
2006-Dec-29	2:54	-3744	-6.25	0.0	46.7	0.0	47.8	0	
2006-Dec-29	2:55	-3744	-6.25	0.0	46.7	0.0	47.8	0	
2006-Dec-29	2:55	-3744	-6.25	0.0	46.7	0.0	47.8	0	
2006-Dec-29	2:56	-3744	-6.25	0.0	46.7	0.0	47.8	0	
2006-Dec-29	2:56	-3744	-6.25	0.0	46.7	0.0	47.8	0	
2006-Dec-29	2:57	-3744	-6.25	0.0	46.7	0.0	47.8	0	
2006-Dec-29	2:57	-3744	-6.25	0.0	46.7	0.0	47.8	0	
2006-Dec-29	2:58	-3744	-6.25	0.0	46.7	0.0	47.8	0	
2006-Dec-29	2:58	-3744	-6.25	0.0	46.7	0.0	47.8	0	
2006-Dec-29	2:59	-3744	-6.25	0.0	46.7	0.0	47.8	0	
2006-Dec-29	2:59	-3744	-6.25	0.0	46.7	0.0	47.8	0	
2006-Dec-29	3:00	-3744	-6.25	0.0	46.7	0.0	47.8	0	
2006-Dec-29	3:00	-3744	-6.25	0.0	46.7	0.0	47.8	0	
2006-Dec-29	3:01	-3744	-6.25	0.0	46.7	0.0	47.8	0	
2006-Dec-29	3:01	-3744	-6.25	0.0	46.7	0.0	47.8	0	
2006-Dec-29	3:02	-3744	-6.25	0.0	46.7	0.0	47.8	0	
2006-Dec-29	3:02	-3744	-6.25	0.0	46.7	0.0	47.8	0	
2006-Dec-29	3:03	-3744	-6.25	0.0	46.7	0.0	47.8	0	
2006-Dec-29	3:03	-3744	-6.25	0.0	46.7	0.0	47.8	0	
2006-Dec-29	3:04	-3744	-6.25	0.0	46.7	0.0	47.8	0	

**KCC**  
**APR 18 2007**  
**CONFIDENTIAL**

**RECEIVED**  
**KANGAS CORPORATION COMMISSION**  
**APR 19 2007**  
**CONSERVATION DIVISION**  
**WICHITA KS**

Well			Field			Service Date		Customer		Job Number	
BRANSTETTER CHESTER #106W			PLEASANT P					OXY RESOURCE CALIFORNIA LLC		2205552581	
Date	Time	Treating Pressure	Density	CMT RATE	CMT VOL	CS NRD RATE	CS NRD TOTAL	0	Message		
	24 hr clock	psi	lb/gal	bb/min	bbbl	bbbl/min	bbbl	0			
2006-Dec-29	3:04	-3744	-6.25	0.0	46.7	0.0	47.8	0			
2006-Dec-29	3:05	-3744	-6.25	0.0	46.7	0.0	47.8	0			
2006-Dec-29	3:05	-3744	-6.25	0.0	46.7	0.0	47.8	0			
2006-Dec-29	3:06	-3744	-6.25	0.0	46.7	0.0	47.8	0			
2006-Dec-29	3:06	-3744	-6.25	0.0	46.7	0.0	47.8	0			
2006-Dec-29	3:07	-3744	-6.25	0.0	46.7	0.0	47.8	0			
2006-Dec-29	3:07	-3744	-6.25	0.0	46.7	0.0	47.8	0			
2006-Dec-29	3:08	-3744	-6.25	0.0	46.7	0.0	47.8	0			
2006-Dec-29	3:08	-3744	-6.25	0.0	46.7	0.0	47.8	0			
2006-Dec-29	3:09	-3744	-6.25	0.0	46.7	0.0	47.8	0			
2006-Dec-29	3:09	-3744	-6.25	0.0	46.7	0.0	47.8	0			
2006-Dec-29	3:10	-3744	-6.25	0.0	46.7	0.0	47.8	0			
2006-Dec-29	3:10	-3744	-6.25	0.0	46.7	0.0	47.8	0			
2006-Dec-29	3:11	1337	8.32	0.0	46.7	0.0	47.8	0			
2006-Dec-29	3:11	1337	8.32	0.0	46.7	0.0	47.8	0			
2006-Dec-29	3:12								Loss of signal. bumped plug to 1337 125.25 bbbls		
2006-Dec-29	3:12	1341	8.32	0.0	46.7	0.0	47.8	0			
2006-Dec-29	3:12	1341	8.32	0.0	46.7	0.0	47.8	0			
2006-Dec-29	3:12	9	8.32	0.0	46.7	0.0	47.8	0			
2006-Dec-29	3:13	5	8.31	0.0	46.7	0.0	47.8	0			
2006-Dec-29	3:13								Stopped Acquisition		
Post Job Summary											
Average Pump Rates, bpm						Volume of Fluid Injected, bbl					
Slurry	N2	Mud	Maximum Rate	Total Slurry	Mud	Spacer	N2				
5			6	267.75		10					
Treating Pressure Summary, psi						Breakdown Fluid					
Maximum	Final	Average	Bump Plug to	Breakdown	Volume	Density					
650		250	1350		bbbl	8.34 lb/gal					
Avg. N2 Percent	Designed Slurry Volume	Displacement	Mix Water Temp	<input checked="" type="checkbox"/> Cement Circulated to Surface?		Volume					
%	267.75 bbl	124.99 bbl	°F	<input type="checkbox"/> Washed Thru Perfs		To					
Customer or Authorized Representative				Schlumberger Supervisor							
ARROYO, ELKIN				Flanagan, Patrick				<input type="checkbox"/> CirculationLost		<input checked="" type="checkbox"/> Job Completed	

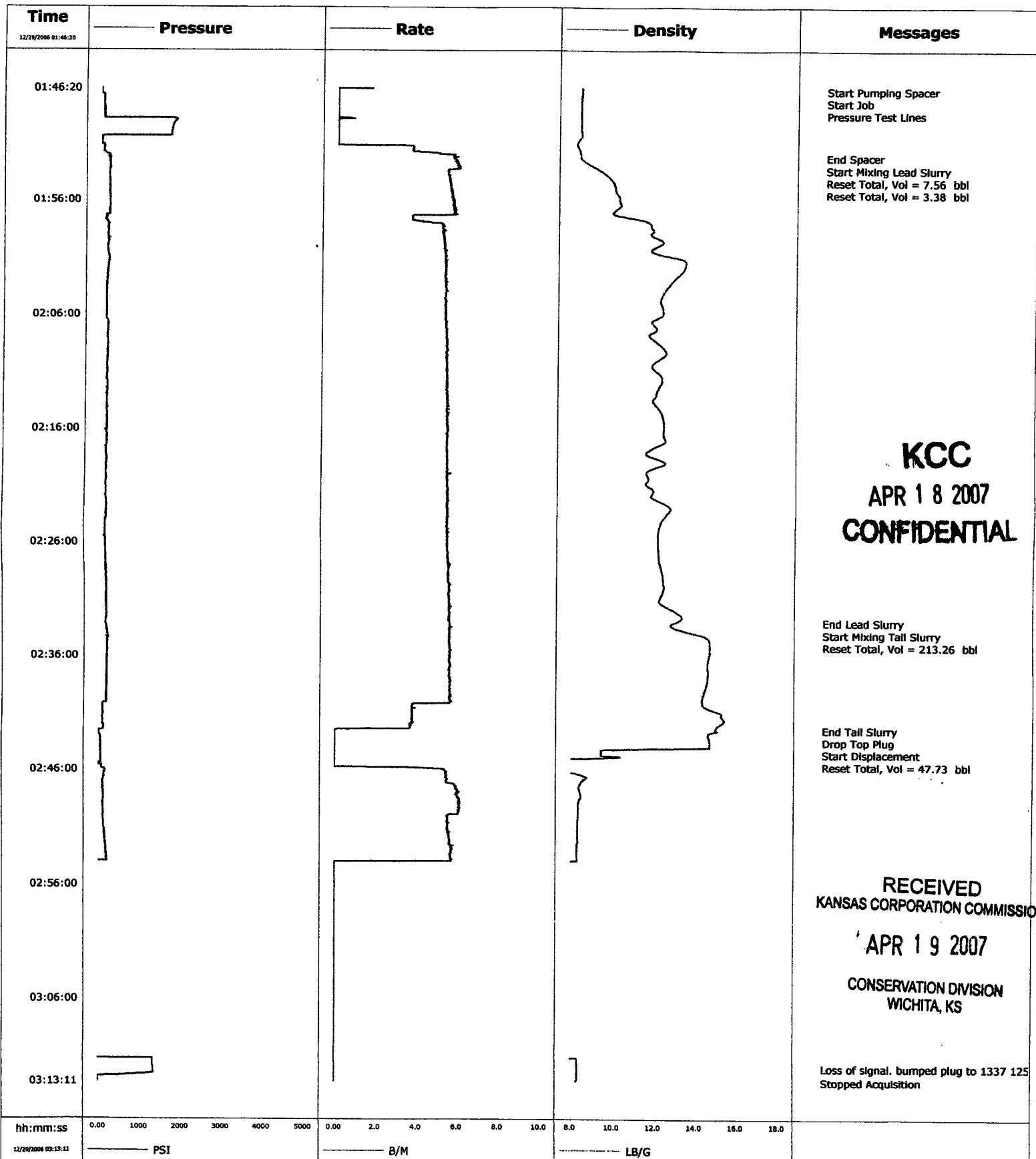
**KCC**  
**APR 18 2007**  
**CONFIDENTIAL**

**RECEIVED**  
**KANSAS CORPORATION COMMISSION**

**APR 19 2007**

**CONSERVATION DIVISION**  
**WICHITA, KS**

<b>Well</b>	Branster Chester 106W	<b>Client</b>	Oxy Resources California
<b>Field</b>	Pleasant P	<b>SIR No.</b>	
<b>Engineer</b>		<b>Job Type</b>	8 5/8" surface casing
<b>Country</b>	United States	<b>Job Date</b>	12-28-2006



**KCC**  
**APR 18 2007**  
**CONFIDENTIAL**

RECEIVED  
KANSAS CORPORATION COMMISSION  
APR 19 2007  
CONSERVATION DIVISION  
WICHITA, KS





# Cementing Service Report

Customer OXY RESOURCE CALIFORNIA LLC						Job Number 2205553056			
Well BRANSTETTER CHESTER 106W			Location (legal) SEC 36-T27N-R34W			Schlumberger Location Perryton, TX		Job Start 2007-Jan-12	
Field PLEASANT P		Formation Name/Type		Deviation	Bit Size 7.78 in	Well MD 5,570 ft	Well TVD 5,570 ft		
County HASKELL		State/Province KANSAS		BHP psi	BHST 136 °F	BHCT °F	Pore Press. Gradient psi/ft		
Well Master: 0630866575		API / UWI: 15081216900000		Casing/Liner					
Rig Name MURFIN 20	Drilled For Oil & Gas	Service Via Land		Depth, ft 5571	Size, in 5.5	Weight, lb/ft 17	Grade	Thread	
Offshore Zone	Well Class New	Well Type Development		Tubing/Drill Pipe					
Drilling Fluid Type		Max. Density lb/gal	Plastic VI: cp	Depth,	Size, in	Weight, lb/ft	Grade	Thread	
Service Line Cementing	Job Type Cem Prod Casing			Perforations/Open Hole					
Max. Allowed Tubing Pressure 2000 psi	Max. Allowed Ann. Pressure psi	Wellhead Connection 5 1/2" H&SM		Top, ft	Bottom, ft	spf	No. of Shots	Total Interval ft	
Service Instructions STG 1: 20 bbls CW100 70 sks D903 +3%D79 +0.2% D46 +0.125% D130 140 sk 50/50 Poz:H+Adds STG 2: 20 bbls CW100, 80 sks D903 +3%D79 +0.2% D46 +0.125pps D130 100 sks H+0.1%D65 +0.3% D167 +0.125pps D130 (25 sks of Lead for rat &				Treat Down Casing	Displacement 128.3 bbl	Packer Type STAGE TOOL	Packer Depth 3541 ft		
Casing/Tubing Secured <input checked="" type="checkbox"/>	1 Hole Volume Circulated prior to Cementing <input checked="" type="checkbox"/>			Tubing Vol. bbl	Casing Vol. 129 bbl	Annular Vol. 172 bbl	Open Hole Vol 301 bbl		
Lift Pressure: 775 psi				Shoe Type:		Squeeze Job			
Pipe Rotated <input type="checkbox"/>	Pipe Reciprocated <input type="checkbox"/>			Shoe Depth: 5571 ft		Squeeze Type			
No. Centralizers: Top Plugs: 2	Bottom Plugs: 0		Stage Tool Type: 3541		Tool Type:				
Cement Head Type: Single				Stage Tool Depth: ft		Tool Depth: ft			
Job Scheduled For:		Arrived on Location: 2007-Jan-12 9:00	Leave Location: 2007-Jan-13 1:30		Collar Type:		Tail Pipe Size: in		
				Collar Depth: 5527 ft		Tail Pipe Depth: ft			
						Sqz Total Vol: bbl			
Date	Time	Treating Pressure psi	Flow Rate bbl/min	Volume bbl	CMT DENS lb/gal	Flowmeter Rate bbl/min	Flowmeter Tot bbl	0	Message
2007-Jan-12	16:45							0	
2007-Jan-12	16:45	3246	0.0	0.0	8.31	1.6	0.0	0	Start Job
2007-Jan-12	16:45	3195	0.0	0.0	8.31	0.3	0.2	0	
2007-Jan-12	16:46	23	0.0	0.0	8.31	0.3	0.4	0	
2007-Jan-12	16:46	23	0.0	0.0	8.31	0.4	0.6	0	
2007-Jan-12	16:47	18	0.0	0.0	8.16	0.7	0.7	0	
2007-Jan-12	16:47	96	0.0	0.0	8.30	0.0	1.0	0	
2007-Jan-12	16:48	60	0.1	0.0	8.28	0.3	1.1	0	
2007-Jan-12	16:48								Start Pumping Wash
2007-Jan-12	16:48	215	2.8	0.2	8.27	0.7	1.4	0	
2007-Jan-12	16:48	270	2.8	0.3	8.27	0.6	1.4	0	
2007-Jan-12	16:49	389	5.4	2.8	8.15	0.2	1.6	0	
2007-Jan-12	16:49	366	5.4	5.5	7.94	0.0	1.7	0	
2007-Jan-12	16:50	352	5.4	8.2	7.92	0.1	1.8	0	
2007-Jan-12	16:50	339	5.5	10.9	7.67	0.9	1.9	0	
2007-Jan-12	16:51	343	5.4	13.7	4.07	1.6	2.3	0	
2007-Jan-12	16:51	334	5.4	16.4	3.87	2.5	3.0	0	
2007-Jan-12	16:52	320	5.4	19.1	6.37	0.3	3.9	0	
2007-Jan-12	16:52	192	5.4	21.4	8.28	0.4	4.0	0	
2007-Jan-12	16:52								End Wash
2007-Jan-12	16:52	270	5.4	21.5	8.27	0.5	4.0	0	
2007-Jan-12	16:52								Start Pumping Spacer

**KCC**  
**APR 18 2007**  
**CONFIDENTIAL**

**RECEIVED**  
**KANSAS CORPORATION COMMISSION**  
**APR 19 2007**  
**CONSERVATION DIVISION**  
**WICHITA, KS**

Well		Field			Service Date		Customer		Job Number
BRANSTETTER CHESTER #106W		PLEASANT P			0712-Jan-12		OXY RESOURCE CALIFORNIA LLC		2205553056
Date	Time	Treating Pressure	Flow Rate	Volume	CMT DENS	Flowmeter Rate	Flowmeter Tot	0	Message
	24 hr clock	psi	bbbl/min	bbbl	lb/gal	bbbl/min	bbbl	0	
2007-Jan-12	16:52								
2007-Jan-12	16:52	325	5.4	21.6	8.28	0.3	4.0	0	Reset Total, Vol = 21.63 bbl
2007-Jan-12	16:52	110	5.4	0.2	8.28	0.4	0.0	0	
2007-Jan-12	16:53	339	5.4	2.9	8.05	6.7	2.5	0	
2007-Jan-12	16:53	343	5.4	5.6	8.28	5.4	5.2	0	
2007-Jan-12	16:54	320	5.4	8.3	8.61	4.8	7.4	0	
2007-Jan-12	16:54	343	5.4	11.1	8.63	5.0	9.7	0	
2007-Jan-12	16:54	334	5.4	12.9	8.73	4.9	11.3	0	
2007-Jan-12	16:54								
2007-Jan-12	16:54	339	5.4	13.0	8.73	4.9	11.4	0	End Spacer
2007-Jan-12	16:54								
2007-Jan-12	16:55								Reset Total, Vol = 12.97 bbl
2007-Jan-12	16:55	339	5.4	0.3	8.76	4.9	0.2	0	Start Mixing Lead Slurry
2007-Jan-12	16:55	316	5.4	0.8	9.16	4.6	0.7	0	
2007-Jan-12	16:55	371	5.4	3.5	10.32	5.0	3.2	0	
2007-Jan-12	16:56	380	5.4	6.3	10.66	5.2	5.7	0	
2007-Jan-12	16:56	375	5.4	9.0	10.91	5.2	8.3	0	
2007-Jan-12	16:57	348	5.1	11.6	10.84	5.0	10.9	0	
2007-Jan-12	16:57	325	5.0	14.1	10.75	5.0	13.4	0	
2007-Jan-12	16:58	320	5.0	16.6	10.91	5.1	15.9	0	
2007-Jan-12	16:58	311	5.1	19.2	11.14	5.0	18.3	0	
2007-Jan-12	16:59	320	5.4	21.8	11.02	5.2	20.9	0	
2007-Jan-12	16:59	261	5.4	24.5	10.89	4.5	23.4	0	
2007-Jan-12	17:00	279	5.0	27.0	11.48	4.7	25.8	0	
2007-Jan-12	17:00	288	5.4	29.7	10.90	5.4	28.3	0	
2007-Jan-12	17:01	266	5.4	32.4	10.91	5.4	31.0	0	
2007-Jan-12	17:01	238	5.4	35.1	10.70	5.2	33.6	0	
2007-Jan-12	17:02	233	5.4	37.8	10.98	5.0	36.1	0	
2007-Jan-12	17:02	151	4.3	40.3	10.07	3.3	38.3	0	
2007-Jan-12	17:03								
2007-Jan-12	17:03	137	4.3	42.1	9.38	2.8	39.5	0	End Lead Slurry
2007-Jan-12	17:03	137	4.3	42.2	9.38	2.8	39.6	0	
2007-Jan-12	17:03								
2007-Jan-12	17:03								Reset Total, Vol = 42.20 bbl
2007-Jan-12	17:03	133	4.3	0.1	9.34	2.5	0.1	0	Start Mixing Tail Slurry
2007-Jan-12	17:03	137	4.3	0.2	9.32	3.0	0.1	0	
2007-Jan-12	17:03	142	4.3	2.4	9.60	2.4	1.5	0	
2007-Jan-12	17:04	133	4.3	4.5	11.57	2.5	2.9	0	
2007-Jan-12	17:04	146	4.2	6.6	10.19	3.6	4.5	0	
2007-Jan-12	17:05	133	3.9	8.5	11.08	3.4	6.2	0	
2007-Jan-12	17:05	192	3.9	10.5	13.62	3.6	7.9	0	
2007-Jan-12	17:06	325	5.4	12.9	13.88	5.1	10.2	0	
2007-Jan-12	17:06	261	5.0	15.5	13.43	4.5	12.5	0	
2007-Jan-12	17:07	298	5.4	18.1	13.41	5.2	15.0	0	
2007-Jan-12	17:07	316	5.4	20.8	14.02	5.3	17.6	0	
2007-Jan-12	17:08	366	5.4	23.5	14.64	5.2	20.2	0	
2007-Jan-12	17:08	348	5.4	26.2	14.20	5.1	22.8	0	
2007-Jan-12	17:09	307	5.4	28.9	13.44	5.1	25.4	0	
2007-Jan-12	17:09	243	4.6	31.5	13.77	4.5	27.8	0	
2007-Jan-12	17:10	266	4.6	33.8	14.06	4.5	30.0	0	
2007-Jan-12	17:10	325	5.4	36.4	14.04	5.2	32.5	0	
2007-Jan-12	17:11	320	5.4	39.1	14.02	5.2	35.1	0	
2007-Jan-12	17:11	325	5.4	41.8	14.12	5.2	37.7	0	
2007-Jan-12	17:12	320	5.4	44.6	14.06	5.2	40.3	0	

**KCC**  
**APR 18 2007**  
**CONFIDENTIAL**

**RECEIVED**  
**KANSAS CORPORATION COMMISSION**  
**APR 19 2007**  
**CONSERVATION DIVISION**  
**WICHITA, KS**

Well		Field			Service Date		Customer		Job Number	
BRANSTETTER CHESTER #106W		PLEASANT P			0712-Jan-12		OXY RESOURCE CALIFORNIA LLC		2205553056	
Date	Time	Treating Pressure	Flow Rate	Volume	CMT DENS	Flowmeter Rate	Flowmeter Tot	0	Message	
	24 hr clock	psi	bbf/min	bbf	lb/gal	bbf/min	bbf	0		
2007-Jan-12	17:12	160	3.1	46.9	14.11	3.0	42.5	0		
2007-Jan-12	17:13	151	3.1	48.4	14.04	3.0	44.0	0		
2007-Jan-12	17:13	55	0.0	48.7	11.94	0.0	44.3	0		
2007-Jan-12	17:13									
2007-Jan-12	17:13								End Tail Slurry	
2007-Jan-12	17:13	50	0.0	48.7	11.39	0.0	44.3	0	Reset Total, Vol = 48.71 bbf	
2007-Jan-12	17:13	50	0.0	0.0	12.88	0.0	0.0	0		
2007-Jan-12	17:14	46	0.0	0.0	13.17	0.0	0.0	0		
2007-Jan-12	17:14	46	0.0	0.0	13.59	0.0	0.0	0		
2007-Jan-12	17:15	46	0.0	0.0	13.20	0.0	0.0	0		
2007-Jan-12	17:15	92	0.0	0.0	10.04	0.7	0.3	0		
2007-Jan-12	17:16	128	0.0	0.0	8.36	1.2	1.0	0		
2007-Jan-12	17:16	128	0.0	0.0	8.21	0.5	2.6	0		
2007-Jan-12	17:17	128	0.0	0.0	7.47	1.3	3.0	0		
2007-Jan-12	17:17	128	0.0	0.0	7.34	1.1	3.4	0		
2007-Jan-12	17:18	101	0.0	0.0	7.02	0.6	4.2	0		
2007-Jan-12	17:18	87	0.0	0.0	2.19	2.4	5.0	0		
2007-Jan-12	17:19	284	0.0	0.0	8.27	5.4	7.4	0		
2007-Jan-12	17:19	270	0.0	0.0	8.24	5.1	10.5	0		
2007-Jan-12	17:20	279	0.0	0.0	8.25	5.1	13.0	0		
2007-Jan-12	17:20	261	0.0	0.0	8.30	5.5	15.6	0		
2007-Jan-12	17:21	270	0.0	0.0	8.30	0.8	17.3	0		
2007-Jan-12	17:21	293	0.0	0.0	8.30	6.2	19.5	0		
2007-Jan-12	17:22	298	0.0	0.0	8.30	0.2	21.5	0		
2007-Jan-12	17:22	60	0.0	0.0	8.30	0.1	21.6	0		
2007-Jan-12	17:22	50	0.0	0.0	8.30	0.1	0.0	0		
2007-Jan-12	17:22									
2007-Jan-12	17:22								Drop Top Plug	
2007-Jan-12	17:23	50	0.0	0.0	8.28	0.2	0.0	0	Start Displacement	
2007-Jan-12	17:23	55	0.0	0.0	8.31	0.1	0.1	0		
2007-Jan-12	17:24	50	0.0	0.0	8.30	0.1	0.1	0		
2007-Jan-12	17:24	69	1.7	0.1	8.21	1.8	0.3	0		
2007-Jan-12	17:25	156	5.2	1.8	8.30	5.4	1.9	0		
2007-Jan-12	17:25	156	5.2	4.4	8.30	5.4	4.6	0		
2007-Jan-12	17:26	151	5.2	7.0	8.30	5.2	7.3	0		
2007-Jan-12	17:26	156	5.2	9.5	8.30	5.3	10.0	0		
2007-Jan-12	17:27	165	5.2	12.1	8.30	5.3	12.6	0		
2007-Jan-12	17:27	160	5.2	14.7	8.30	5.4	15.3	0		
2007-Jan-12	17:28	156	5.2	17.3	8.30	5.4	18.0	0		
2007-Jan-12	17:28	156	5.1	19.9	8.30	5.4	20.6	0		
2007-Jan-12	17:29	156	5.2	22.5	8.30	5.4	23.3	0		
2007-Jan-12	17:29	156	5.2	25.1	8.30	5.4	26.0	0		
2007-Jan-12	17:30	156	5.2	27.7	8.30	5.4	28.7	0		
2007-Jan-12	17:30	160	5.1	30.2	8.30	5.4	31.3	0		
2007-Jan-12	17:31	151	5.2	32.8	8.30	5.3	34.0	0		
2007-Jan-12	17:31	151	5.2	35.4	8.30	5.4	36.7	0		
2007-Jan-12	17:32	156	5.2	38.0	8.30	5.4	39.3	0		
2007-Jan-12	17:32	156	5.1	40.6	8.30	5.4	42.0	0		
2007-Jan-12	17:33	156	5.1	43.2	8.30	5.3	44.7	0		
2007-Jan-12	17:33	151	5.2	45.8	8.30	5.3	47.4	0		
2007-Jan-12	17:34	156	5.2	48.4	8.30	5.3	50.0	0		
2007-Jan-12	17:34	64	0.1	50.4	8.30	0.4	52.3	0		
2007-Jan-12	17:35	46	0.0	50.4	7.96	0.0	52.4	0		
2007-Jan-12	17:35	41	0.0	50.4	8.16	0.4	52.5	0		

**KCC**

**APR 18 2007**

**CONFIDENTIAL**

**RECEIVED  
KANSAS CORPORATION COMMISSION**

**APR 19 2007**

**CONSERVATION DIVISION  
WICHITA, KS**

Well		Field			Service Date		Customer		Job Number	
BRANSTETTER CHESTER #106W		PLEASANT P			0712-Jan-12		OXY RESOURCE CALIFORNIA LLC		2205553056	
Date	Time	Treating Pressure	Flow Rate	Volume	CMT DENS	Flowmeter Rate	Flowmeter Tot	0	Message	
	24 hr clock	psi	bb/min	bbl	lb/gal	bb/min	bbl	0		
2007-Jan-12	17:36	37	0.0	50.4	8.05	0.0	52.6	0		
2007-Jan-12	17:36	37	0.0	50.4	8.22	0.1	52.7	0		
2007-Jan-12	17:37	37	0.0	50.4	7.92	0.0	52.8	0		
2007-Jan-12	17:37	41	0.0	50.4	8.18	0.0	52.8	0		
2007-Jan-12	17:38	41	0.0	50.4	8.21	0.0	52.9	0		
2007-Jan-12	17:38	32	0.0	50.4	8.28	0.1	52.9	0		
2007-Jan-12	17:39	50	0.1	51.0	8.60	0.1	53.0	0		
2007-Jan-12	17:39	46	0.0	51.0	7.83	0.7	53.0	0		
2007-Jan-12	17:40	284	5.2	52.9	8.70	5.4	54.5	0		
2007-Jan-12	17:40	279	5.2	55.4	8.77	5.2	57.1	0		
2007-Jan-12	17:41	261	5.2	58.0	8.76	5.3	59.8	0		
2007-Jan-12	17:41	252	5.1	60.6	8.70	5.4	62.4	0		
2007-Jan-12	17:42	288	5.1	63.2	8.84	5.2	65.0	0		
2007-Jan-12	17:42	279	5.2	65.8	8.84	5.3	67.7	0		
2007-Jan-12	17:43	275	5.2	68.4	8.83	5.2	70.3	0		
2007-Jan-12	17:43	261	5.2	71.0	8.83	5.1	72.9	0		
2007-Jan-12	17:44	270	5.2	73.6	8.89	5.2	75.5	0		
2007-Jan-12	17:44	270	5.2	76.1	8.89	5.2	78.1	0		
2007-Jan-12	17:45	279	5.6	78.8	8.89	5.7	80.8	0		
2007-Jan-12	17:45	284	5.6	81.6	8.89	5.7	83.7	0		
2007-Jan-12	17:46	279	5.6	84.4	8.89	5.7	86.6	0		
2007-Jan-12	17:46	279	5.6	87.3	8.89	5.7	89.4	0		
2007-Jan-12	17:47	279	5.6	90.1	8.89	5.6	92.2	0		
2007-Jan-12	17:47	279	5.6	92.9	8.89	5.7	95.1	0		
2007-Jan-12	17:48	385	5.6	95.7	8.90	5.6	97.9	0		
2007-Jan-12	17:48	435	5.6	98.5	8.89	5.6	100.8	0		
2007-Jan-12	17:49	462	5.6	101.3	8.90	5.5	103.6	0		
2007-Jan-12	17:49	522	5.6	104.1	8.89	5.6	105.9	0		
2007-Jan-12	17:50	572	5.6	106.9	8.90	5.5	108.7	0		
2007-Jan-12	17:50	600	5.6	109.7	8.90	5.6	111.5	0		
2007-Jan-12	17:51	682	5.6	112.5	8.89	5.6	114.3	0		
2007-Jan-12	17:51	742	5.6	115.4	8.90	5.5	117.1	0		
2007-Jan-12	17:52	764	5.6	118.2	8.90	5.6	119.9	0		
2007-Jan-12	17:52	838	5.6	121.0	8.90	5.6	122.6	0		
2007-Jan-12	17:53	604	1.8	123.0	8.90	1.7	124.7	0		
2007-Jan-12	17:53	659	2.3	124.1	8.89	2.2	125.7	0		
2007-Jan-12	17:54	691	2.3	125.2	8.90	2.2	126.9	0		
2007-Jan-12	17:54	710	2.3	126.4	8.90	2.3	128.0	0		
2007-Jan-12	17:55	728	2.3	127.5	8.90	2.2	129.1	0		
2007-Jan-12	17:55	760	2.3	128.6	8.90	2.2	130.2	0		
2007-Jan-12	17:56	998	2.3	129.8	8.89	2.2	131.3	0		
2007-Jan-12	17:56	1213	0.0	129.9	8.91	0.0	131.5	0		
2007-Jan-12	17:56	1204	0.0	129.9	8.91	0.0	131.5	0		
2007-Jan-12	17:56								Bump Top Plug	
2007-Jan-12	17:56	1208	0.0	129.9	8.91	0.0	131.5	0		
2007-Jan-12	17:56								End Displacement	
2007-Jan-12	17:56	1199	0.0	129.9	8.91	0.0	131.5	0		
2007-Jan-12	17:56								Reset Total, Vol = 129.91 bbl	
2007-Jan-12	17:57	1199	0.0	0.0	8.91	0.0	0.0	0		
2007-Jan-12	17:57	1195	0.0	0.0	8.91	0.0	0.0	0		
2007-Jan-12	17:58	1190	0.0	0.0	8.91	0.0	0.0	0		
2007-Jan-12	17:59	243	0.0	0.0	8.91	0.0	0.0	0		
2007-Jan-12	17:59	0	0.0	0.0	8.91	0.0	0.0	0		
2007-Jan-12	18:19	5	0.0	0.0	9.00	0.0	0.0	0		

**KCC**  
**APR 18 2007**  
**CONFIDENTIAL**

**RECEIVED**  
**KANSAS CORPORATION COMMISSION**  
**APR 19 2007**

Well		Field			Service Date		Customer		Job Number	
BRANSTETTER CHESTER #106W		PLEASANT P			0712-Jan-12		OXY RESOURCE CALIFORNIA LLC		2205553056	
Date	Time	Treating Pressure	Flow Rate	Volume	CMT DENS	Flowmeter Rate	Flowmeter Tot	0	Message	
	24 hr clock	psi	bbl/min	bbl	lb/gal	bbl/min	bbl	0		
2007-Jan-12	18:20	316	1.1	0.1	8.66	1.2	0.1	0		
2007-Jan-12	18:20	32	1.8	0.4	8.38	3.3	0.5	0		
2007-Jan-12	18:20							0		
2007-Jan-12	18:20	101	0.7	0.6	8.38	0.7	0.7	0	Open stage tool	
2007-Jan-12	18:21	114	1.7	1.4	8.35	1.8	1.5	0		
2007-Jan-12	18:21	55	0.7	2.0	6.60	4.1	2.7	0		
2007-Jan-12	18:22	27	0.7	2.4	8.70	0.5	3.9	0		
2007-Jan-12	18:22	275	3.9	3.9	8.90	4.0	5.3	0		
2007-Jan-12	18:23	270	3.9	5.8	8.90	3.9	7.3	0		
2007-Jan-12	18:23	183	3.9	7.8	7.15	1.6	9.0	0		
2007-Jan-12	18:24	23	0.0	8.2	8.72	0.0	9.6	0		
2007-Jan-12	18:24									
2007-Jan-12	18:24	-9	0.0	8.2	8.89	0.0	9.6	0	Reset Total, Vol = 8.24 bbl	
2007-Jan-12	22:45	19	0.2	0.0	8.27	4.9	0.3	0		
2007-Jan-12	22:45	24	0.3	0.0	8.27	4.8	0.5	0		
2007-Jan-12	22:45									
2007-Jan-12	22:45	-36	0.2	0.1	8.18	3.1	2.6	0	Rat & mouse holes	
2007-Jan-12	22:46	-54	0.2	0.2	8.10	1.6	3.8	0		
2007-Jan-12	22:46	-59	0.2	0.3	9.21	2.0	4.8	0		
2007-Jan-12	22:47	-54	0.2	0.4	12.78	2.5	5.8	0		
2007-Jan-12	22:47	-59	0.1	0.5	13.85	3.7	7.5	0		
2007-Jan-12	22:48	-59	0.1	0.6	13.14	3.8	9.4	0		
2007-Jan-12	22:48	-59	0.1	0.6	12.59	3.6	11.3	0		
2007-Jan-12	22:49	115	0.2	0.8	12.60	4.0	12.6	0		
2007-Jan-12	22:49	198	0.1	0.9	12.61	3.7	14.6	0		
2007-Jan-12	22:50	37	0.0	0.9	10.79	0.0	15.2	0		
2007-Jan-12	22:50	24	0.0	0.9	10.98	0.0	15.2	0		
2007-Jan-12	22:51	15	0.0	0.9	11.13	0.0	15.2	0		
2007-Jan-12	22:51	10	0.0	0.9	11.21	0.0	15.2	0		
2007-Jan-12	22:52	5	0.0	0.9	11.25	0.0	15.2	0		
2007-Jan-12	22:52	1	0.2	0.9	-3.14	0.0	15.5	0		
2007-Jan-12	22:53	1	0.2	1.0	8.67	2.6	16.5	0		
2007-Jan-12	22:53	1	0.0	1.0	8.54	1.4	17.1	0		
2007-Jan-12	22:54	5	0.1	1.1	8.38	1.4	18.4	0		
2007-Jan-12	22:54	10	0.2	1.2	8.31	1.4	19.1	0		
2007-Jan-12	22:55	47	0.2	1.3	8.96	3.9	20.1	0		
2007-Jan-12	22:55	1	0.2	1.3	7.94	0.6	20.8	0		
2007-Jan-12	22:56	1	0.2	1.4	8.02	0.5	21.2	0		
2007-Jan-12	22:56	-4	0.2	1.5	9.35	1.2	21.7	0		
2007-Jan-12	22:57	-8	0.2	1.6	9.98	3.3	23.0	0		
2007-Jan-12	22:57	-8	0.2	1.7	11.18	3.0	24.3	0		
2007-Jan-12	22:58	-8	0.1	1.7	12.98	4.0	26.2	0		
2007-Jan-12	22:58	65	0.1	1.8	15.04	7.5	29.5	0		
2007-Jan-12	22:59	60	0.1	1.9	11.95	2.8	31.1	0		
2007-Jan-12	22:59	51	0.1	2.0	9.35	4.0	32.8	0		
2007-Jan-12	23:00	74	0.2	2.0	8.77	4.3	34.4	0		
2007-Jan-12	23:00	15	0.2	2.1	8.64	0.2	35.9	0		
2007-Jan-12	23:01	-4	0.0	2.1	8.73	0.1	35.9	0		
2007-Jan-12	23:01	-8	0.0	2.1	8.77	0.0	35.9	0		
2007-Jan-12	23:02	-8	0.2	2.2	11.08	0.4	36.0	0		
2007-Jan-12	23:02	-8	0.2	2.3	11.50	0.0	36.1	0		
2007-Jan-12	23:03	-13	0.2	2.4	12.34	0.0	36.1	0		
2007-Jan-12	23:03	-17	0.2	2.5	12.31	0.0	36.1	0		
2007-Jan-12	23:04	51	0.2	2.6	12.86	0.2	37.1	0		

**KCC**  
**APR 18 2007**  
**CONFIDENTIAL**

**RECEIVED**  
**KANSAS CORPORATION COMMISSION**  
**APR 19 2007**  
**CONSERVATION DIVISION**  
**WICHITA, KS**

Well		Field			Service Date		Customer		Job Number
BRANSTETTER CHESTER #106W		PLEASANT P			0712-Jan-12		OXY RESOURCE CALIFORNIA LLC		2205553056
Date	Time	Treating Pressure	Flow Rate	Volume	CMT DENS	Flowmeter Rate	Flowmeter Tot	0	Message
	24 hr clock	psi	bbf/min	bbf	lb/gal	bbf/min	bbf	0	
2007-Jan-12	23:04	10	0.2	2.6	12.93	0.0	37.1	0	
2007-Jan-12	23:05	120	0.2	2.7	11.72	3.3	37.8	0	
2007-Jan-12	23:05	24	0.1	2.8	11.94	0.0	38.2	0	
2007-Jan-12	23:06	1	0.1	2.9	11.95	0.0	38.2	0	
2007-Jan-12	23:06	-8	0.2	3.0	11.21	3.7	38.9	0	
2007-Jan-12	23:07	193	0.2	3.0	11.26	4.2	41.1	0	
2007-Jan-12	23:07	42	0.2	3.1	11.27	0.0	42.0	0	
2007-Jan-12	23:08	1	0.2	3.2	11.27	0.0	42.0	0	
2007-Jan-12	23:08	-13	0.2	3.3	11.26	0.0	42.0	0	
2007-Jan-12	23:09	-13	0.2	3.3	11.27	0.0	42.0	0	
2007-Jan-12	23:09	-13	0.1	3.4	10.82	0.0	42.0	0	
2007-Jan-12	23:10	-13	0.1	3.5	10.59	0.0	42.0	0	
2007-Jan-12	23:10	-13	0.1	3.5	10.43	0.0	42.0	0	
2007-Jan-12	23:11	-4	0.1	3.6	10.26	0.0	42.0	0	
2007-Jan-12	23:11	-4	0.1	3.6	10.14	0.2	42.0	0	
2007-Jan-12	23:12	-4	0.1	3.7	10.09	0.0	42.0	0	
2007-Jan-12	23:12	-4	0.1	3.8	10.00	0.0	42.0	0	
2007-Jan-12	23:13	-4	0.0	3.8	9.79	0.0	42.0	0	
2007-Jan-12	23:13	-4	0.0	3.8	8.55	0.0	42.0	0	
2007-Jan-12	23:14	-4	0.0	3.8	9.76	0.0	42.1	0	
2007-Jan-12	23:14	-4	0.0	3.8	9.81	0.0	42.1	0	
2007-Jan-12	23:15	-4	0.0	3.8	9.81	0.1	42.1	0	
2007-Jan-12	23:16	-4	0.0	3.8	9.79	0.1	42.1	0	
2007-Jan-12	23:16	-4	0.0	3.8	9.76	0.1	42.2	0	
2007-Jan-12	23:17	-4	0.0	3.8	9.71	0.1	42.2	0	
2007-Jan-12	23:17	-4	0.0	3.8	9.62	0.1	42.3	0	
2007-Jan-12	23:18	-4	0.0	3.8	9.57	0.2	42.3	0	
2007-Jan-12	23:18	-4	0.0	3.8	9.57	0.2	42.4	0	
2007-Jan-12	23:19	5	0.0	3.8	9.46	0.3	42.5	0	
2007-Jan-12	23:19	3924	0.0	3.9	9.57	1.1	42.6	0	
2007-Jan-12	23:19								Pressure Test Lines
2007-Jan-12	23:19	3887	0.0	0.0	9.58	0.0	0.0	0	
2007-Jan-12	23:20	3855	0.0	0.0	9.53	0.1	0.0	0	
2007-Jan-12	23:20	3800	0.0	0.0	9.47	0.1	0.1	0	
2007-Jan-12	23:21	19	0.0	0.0	9.42	0.1	0.1	0	
2007-Jan-12	23:21	15	0.0	0.0	9.41	0.1	0.2	0	
2007-Jan-12	23:22	65	1.3	0.3	9.42	0.1	0.3	0	
2007-Jan-12	23:22	70	2.3	0.6	9.43	0.1	0.3	0	
2007-Jan-12	23:22								Start Pumping Wash
2007-Jan-12	23:22	175	3.9	2.0	9.45	0.1	0.3	0	
2007-Jan-12	23:23	225	5.7	4.4	9.41	0.1	0.4	0	
2007-Jan-12	23:23	225	5.7	7.3	9.38	0.1	0.5	0	
2007-Jan-12	23:24	216	5.7	10.2	9.34	0.2	0.5	0	
2007-Jan-12	23:24	211	5.7	13.0	9.31	0.2	0.6	0	
2007-Jan-12	23:25	216	5.7	15.9	9.28	0.2	0.7	0	
2007-Jan-12	23:25	230	5.7	18.7	9.27	0.2	0.8	0	
2007-Jan-12	23:26	207	5.7	21.6	9.24	0.2	0.9	0	
2007-Jan-12	23:26								End Wash
2007-Jan-12	23:26	28	0.0	22.2	9.24	0.2	0.9	0	
2007-Jan-12	23:26	37	0.0	22.2	9.24	0.2	1.0	0	
2007-Jan-12	23:26								Reset Total, Vol = 22.18 bbl
2007-Jan-12	23:26	28	0.0	0.0	9.23	0.3	0.1	0	
2007-Jan-12	23:27	47	3.8	0.5	9.12	1.1	0.3	0	
2007-Jan-12	23:27								Start Pumping Spacer

**KCC**  
**APR 18 2007**  
**CONFIDENTIAL**

**RECEIVED**  
**KANSAS CORPORATION COMMISSION**  
**APR 19 2007**  
**CONSERVATION DIVISION**  
**WICHITA, KS**

Well		Field			Service Date		Customer		Job Number	
BRANSTETTER CHESTER #106W		PLEASANT P			0712-Jan-12		OXY RESOURCE CALIFORNIA LLC		2205553056	
Date	Time	Treating Pressure	Flow Rate	Volume	CMT DENS	Flowmeter Rate	Flowmeter Tot	0	0	Message
	24 hr clock	psi	bbbl/min	bbbl	lb/gal	bbbl/min	bbbl			
2007-Jan-12	23:27	294	5.3	2.8	8.00	0.5	2.0	0	0	
2007-Jan-12	23:27	285	5.3	3.1	8.36	5.6	2.2	0	0	
2007-Jan-12	23:28									
2007-Jan-12	23:28	198	5.3	4.9	8.82	3.9	3.7	0	0	End Spacer
2007-Jan-12	23:28	184	5.3	5.1	8.96	4.2	3.9	0	0	
2007-Jan-12	23:28									
2007-Jan-12	23:28	207	5.3	0.2	9.18	4.1	0.1	0	0	Reset Total, Vol = 5.05 bbl
2007-Jan-12	23:28									
2007-Jan-12	23:28	216	5.3	0.7	9.72	4.0	0.5	0	0	Start Mixing Lead Slurry
2007-Jan-12	23:28	248	5.6	3.5	11.50	3.9	2.5	0	0	
2007-Jan-12	23:29	225	5.6	6.3	11.43	4.5	4.7	0	0	
2007-Jan-12	23:29	207	5.6	9.1	10.83	4.8	7.1	0	0	
2007-Jan-12	23:30	170	5.6	11.9	10.64	4.6	9.4	0	0	
2007-Jan-12	23:30	166	5.6	14.8	10.66	4.7	11.7	0	0	
2007-Jan-12	23:31	161	5.6	17.6	10.66	4.5	13.9	0	0	
2007-Jan-12	23:31	124	5.6	20.4	10.63	4.1	16.0	0	0	
2007-Jan-12	23:32	111	5.6	23.2	10.60	3.6	18.0	0	0	
2007-Jan-12	23:32	138	5.6	26.0	11.18	4.4	20.0	0	0	
2007-Jan-12	23:33	134	5.6	28.8	11.26	4.4	22.1	0	0	
2007-Jan-12	23:33	134	5.6	31.6	11.12	3.8	24.2	0	0	
2007-Jan-12	23:34	106	5.6	34.4	11.01	3.8	26.0	0	0	
2007-Jan-12	23:34	79	5.6	37.3	-3.11	0.8	28.0	0	0	
2007-Jan-12	23:35	56	5.6	40.1	-3.14	0.0	28.0	0	0	
2007-Jan-12	23:35	111	5.5	42.1	10.50	3.0	28.5	0	0	
2007-Jan-12	23:35									
2007-Jan-12	23:35	97	6.6	42.7	-3.14	0.0	28.6	0	0	End Lead Slurry
2007-Jan-12	23:35									
2007-Jan-12	23:35	92	6.6	43.0	-3.14	0.0	28.6	0	0	Reset Total, Vol = 42.99 bbl
2007-Jan-12	23:36	102	3.9	2.2	10.75	1.5	0.3	0	0	
2007-Jan-12	23:36	120	3.9	4.2	11.91	3.8	0.8	0	0	
2007-Jan-12	23:37	152	3.9	6.1	13.13	4.5	2.3	0	0	
2007-Jan-12	23:37	179	3.9	8.1	14.14	3.0	4.0	0	0	
2007-Jan-12	23:38	189	3.9	10.0	14.29	3.1	5.7	0	0	
2007-Jan-12	23:38	161	3.4	11.9	14.61	3.5	7.3	0	0	
2007-Jan-12	23:39	170	3.5	13.6	15.07	3.6	9.0	0	0	
2007-Jan-12	23:39	138	3.1	15.2	15.25	3.1	10.6	0	0	
2007-Jan-12	23:40	65	1.8	16.3	15.08	2.1	11.9	0	0	
2007-Jan-12	23:40	10	0.2	17.0	14.89	0.0	12.8	0	0	
2007-Jan-12	23:41	1	0.0	17.0	14.91	0.0	12.8	0	0	
2007-Jan-12	23:42	1	0.0	17.0	14.93	0.0	12.8	0	0	
2007-Jan-12	23:43	-4	0.0	17.0	14.93	0.0	12.8	0	0	
2007-Jan-12	23:43	1	0.0	17.0	14.93	0.1	12.8	0	0	
2007-Jan-12	23:44	-4	0.0	17.0	14.93	0.0	12.8	0	0	
2007-Jan-12	23:44	-4	0.0	17.0	14.93	0.0	12.9	0	0	
2007-Jan-12	23:48	102	3.1	17.4	14.48	3.1	13.4	0	0	
2007-Jan-12	23:49	120	3.0	19.0	14.77	3.0	15.0	0	0	
2007-Jan-12	23:49	15	0.1	19.7	15.38	0.0	15.6	0	0	
2007-Jan-12	23:50	5	0.2	19.8	15.38	0.0	15.6	0	0	
2007-Jan-12	23:50	19	0.3	19.9	16.39	1.2	15.9	0	0	
2007-Jan-12	23:51	47	0.3	20.0	16.36	1.5	16.9	0	0	
2007-Jan-12	23:51	5	0.2	20.1	16.40	2.5	17.3	0	0	
2007-Jan-12	23:52	15	0.2	20.2	16.57	0.8	18.1	0	0	
2007-Jan-12	23:52	5	0.0	20.2	16.23	0.0	18.2	0	0	
2007-Jan-12	23:52									End Tail Slurry

**KCC**  
**APR 18 2007**  
**CONFIDENTIAL**

**RECEIVED**  
**KANSAS CORPORATION COMMISSION**

**APR 19 2007**

**CONSERVATION DIVISION**  
**WICHITA, KS**

Well		Field			Service Date		Customer		Job Number
BRANSTETTER CHESTER #106W		PLEASANT P			0712-Jan-12		OXY RESOURCE CALIFORNIA LLC		2205553056
Date	Time	Treating Pressure	Flow Rate	Volume	CMT DENS	Flowmeter Rate	Flowmeter Tot	0	Message
	24 hr clock	psi	bbl/min	bbl	lb/gal	bbl/min	bbl	0	
2007-Jan-12	23:52								Reset Total, Vol = 20.22 bbl
2007-Jan-12	23:52	5	0.0	20.2	15.81	0.0	18.2	0	
2007-Jan-12	23:52	5	0.0	0.0	16.28	0.0	0.0	0	
2007-Jan-12	23:53	1	0.0	0.0	15.11	0.0	0.0	0	
2007-Jan-12	23:53	1	0.0	0.0	15.07	0.0	0.0	0	
2007-Jan-12	23:54	1	0.0	0.0	15.03	0.0	0.0	0	
2007-Jan-12	23:54	1	0.0	0.0	15.00	0.0	0.0	0	
2007-Jan-12	23:55	1	0.0	0.0	14.99	0.0	0.0	0	
2007-Jan-12	23:57	120	0.0	0.0	14.82	2.0	0.3	0	
2007-Jan-12	23:57	266	0.0	0.0	10.67	5.0	1.9	0	
2007-Jan-12	23:58	147	0.0	0.0	9.16	4.1	4.5	0	
2007-Jan-12	23:58	124	0.0	0.0	8.49	5.5	7.0	0	
2007-Jan-12	23:59	115	0.0	0.0	8.31	5.5	9.8	0	
2007-Jan-12	23:59	120	0.0	0.0	8.12	5.4	12.3	0	
2007-Jan-12	23:59								Start Displacement
2007-Jan-12	23:59								Drop Top Plug
2007-Jan-12	23:59	111	0.0	0.0	8.18	5.6	12.7	0	
2007-Jan-13	0:00	102	5.7	15.1	8.18	5.4	15.1	0	
2007-Jan-13	0:00	97	5.6	17.9	7.63	3.7	17.3	0	
2007-Jan-13	0:01	102	5.6	20.7	7.86	4.7	19.3	0	
2007-Jan-13	0:01	79	5.6	23.5	8.24	5.2	22.1	0	
2007-Jan-13	0:02	97	5.6	26.3	8.31	4.9	24.9	0	
2007-Jan-13	0:02	97	5.7	29.1	8.30	0.0	25.4	0	
2007-Jan-13	0:03	97	5.7	32.0	8.31	0.0	25.4	0	
2007-Jan-13	0:03	106	5.7	34.8	8.31	5.9	27.1	0	
2007-Jan-13	0:04	102	5.9	37.8	8.30	6.0	30.1	0	
2007-Jan-13	0:04	88	5.6	40.5	8.30	5.6	32.8	0	
2007-Jan-13	0:05	88	5.4	43.2	8.30	0.4	33.6	0	
2007-Jan-13	0:05	92	5.4	45.9	8.30	5.6	34.6	0	
2007-Jan-13	0:06	97	5.4	48.7	8.30	5.7	37.4	0	
2007-Jan-13	0:06	92	5.4	51.4	8.30	1.3	39.6	0	
2007-Jan-13	0:07	92	5.4	54.1	8.30	1.2	40.2	0	
2007-Jan-13	0:07	97	5.4	56.8	8.30	5.6	42.5	0	
2007-Jan-13	0:08	152	5.4	59.6	8.30	5.4	45.3	0	
2007-Jan-13	0:08	175	5.4	62.3	8.30	5.5	48.0	0	
2007-Jan-13	0:09	221	5.4	65.0	8.30	5.4	65.0	0	
2007-Jan-13	0:09	262	5.4	67.7	8.30	5.4	67.7	0	
2007-Jan-13	0:10	326	5.4	70.4	8.30	5.4	70.4	0	
2007-Jan-13	0:10	326	2.7	72.9	8.30	2.5	72.9	0	
2007-Jan-13	0:11	367	3.6	74.5	8.30	3.6	74.4	0	
2007-Jan-13	0:11	385	3.6	76.3	8.30	3.5	76.2	0	
2007-Jan-13	0:12	422	3.6	78.1	8.30	3.5	78.0	0	
2007-Jan-13	0:12	472	3.6	79.9	8.30	3.6	79.8	0	
2007-Jan-13	0:13	509	3.6	81.7	8.30	3.5	81.5	0	
2007-Jan-13	0:13	1136	3.6	83.6	8.30	3.5	83.3	0	
2007-Jan-13	0:14								Bump Top Plug
2007-Jan-13	0:14	1988	0.0	83.9	8.30	0.0	83.8	0	
2007-Jan-13	0:14								End Displacement
2007-Jan-13	0:14								Reset Total, Vol = 83.90 bbl
2007-Jan-13	0:14	2024	0.0	83.9	8.30	0.0	83.8	0	
2007-Jan-13	0:14	2010	0.0	0.0	8.30	0.0	0.0	0	
2007-Jan-13	0:14	2001	0.0	0.0	8.30	0.0	0.0	0	
2007-Jan-13	0:15	2006	0.0	0.0	8.31	0.0	0.0	0	
2007-Jan-13	0:15	2015	0.0	0.0	8.31	0.0	0.0	0	

**KCC**

APR 18 2007

**CONFIDENTIAL**

RECEIVED  
KANSAS CORPORATION COMMISSION

APR 19 2007

CONSERVATION DIVISION  
WICHITA, KS



Well BRANSTETTER CHESTER #106W		Field PLEASANT P		Service Date 0712-Jan-12		Customer OXY RESOURCE CALIFORNIA LLC		Job Number 2205553056	
Date	Time 24 hr clock	Treating Pressure psi	Flow Rate bbl/min	Volume bbl	CMT DENS lb/gal	Flowmeter Rate bbl/min	Flowmeter Tot bbl	0	Message
2007-Jan-13	0:17	2020	0.0	0.0	8.31	0.0	0.0	0	
2007-Jan-13	0:19	1873	0.0	0.0	8.31	0.0	0.0	0	
2007-Jan-13	0:19	481	0.0	0.0	8.31	0.0	0.0	0	
2007-Jan-13	0:20	19	0.0	0.0	8.31	0.0	0.0	0	
2007-Jan-13	0:20								
2007-Jan-13	0:20	10	0.0	0.0	8.31	0.0	0.0	0	End Job
Post Job Summary									
Average Pump Rates, bpm					Volume of Fluid Injected, bbl				
Slurry	N2	Mud	Maximum Rate	Total Slurry	Mud	Spacer	N2		
5			6	145		40			
Treating Pressure Summary, psi					Breakdown Fluid				
Maximum	Final	Average	Bump Plug to	Breakdown	Volume	Density			
		2020							
Avg. N2 Percent	Designed Slurry Volume	Displacement	Mix Water Temp						
%	145 bbl	128.3 bbl	°F						
Customer or Authorized Representative			Schlumberger Supervisor			<input type="checkbox"/> Cement Circulated to Surface? Volume <input type="checkbox"/> Washed Thru Perfs To ft			
ARROYO, ELKIN			Ahrends, Timothy			<input type="checkbox"/> CirculationLost <input checked="" type="checkbox"/> Job Completed			

**KCC**  
**APR 18 2007**  
**CONFIDENTIAL**

**RECEIVED**  
**KANSAS CORPORATION COMMISSION**

**APR 19 2007**

**CONSERVATION DIVISION**  
**WICHITA, KS**

