

STATE CORPORATION COMMISSION OF KANSAS
OIL & GAS CONSERVATION DIVISION
WELL COMPLETION FORM
ACO-1 WELL HISTORY
DESCRIPTION OF WELL AND LEASE

ORIGINAL

API NO. 15- 051-24847
County Ellis
134'
SW - C - W/2 - SE Sec. 2 Twp. 12S Rge. 20W E

Operator: License # 30606
Name: Murfin Drilling Co., Inc.
Address 250 N. Water, Suite 300
City/State/Zip Wichita, KS 67202

1200 Feet from S/W (circle one) Line of Section
2040 Feet from E/W (circle one) Line of Section
Footages Calculated from Nearest Outside Section Corner:
NE, SE, NW or SW (circle one)
Lease Name T. Hall Well # 1-2
Field Name Unknown

Purchaser:
Operator Contact Person: Larry M. Jack
Phone () 267-3241

Producing Formation
Elevation: Ground 2186 KB 2191
Total Depth 3935 PBSD

Contractor: Name: Murfin Drilling Co., Inc.
License: 30606

Amount of Surface Pipe Set and Cemented at 261 Feet
Multiple Stage Cementing Collar Used? Yes No

Wellsite Geologist: Roger Welty
Designate Type of Completion
 New Well Re-Entry
 Oil SWD SLOW Temp. Abd.
 Gas ENHR SIGW
 Dry Other (Core, etc.)

If yes, show depth set Feet
If Alternate II completion, cement circulated from feet depth to w/ sx cnt.

RELEASED
9-6-1994
Workover
SFP 6 1994

Drilling Fluid Management Plan (Data must be collected from the Reserve Pit)

If Workover/Re-Entry: old well info as follows:
Operator:
Well Name:
Comp. Date Old Total Depth

Chloride content 21000 ppm Fluid volume 2500 bbls
Dewatering method used evaporation
Location of fluid disposal if hauled offsite

Deepening Re-perf. Conv. to Inj/SWD
Plug Back PBSD
Commingled Docket No.
Dual Completion Docket No.
Other (SWD or Inj?) Docket No.
8/8/93 8/16/93
Spud Date Date Reached TD Completion Date

Operator Name
Lease Name License No.
Quarter Sec. Twp. Rng. E/W
County Docket No.

FROM CONFIDENTIAL

CONFIDENTIAL

RECEIVED
KANSAS CORPORATION COMMISSION
SEP 02 1993
OIL & GAS CONSERVATION DIVISION
WICHITA, KS

D & A 9-22-93

INSTRUCTIONS: An original and two copies of this form shall be filed with the Kansas Corporation Commission, 200 Colorado Derby Building, Wichita, Kansas 67202, within 120 days of the spud date, recompletion, workover or conversion of a well. Rule 82-3-130, 82-3-106 and 82-3-107 apply. Information on side two of this form will be held confidential for a period of 12 months if requested in writing and submitted with the form (see rule 82-3-107 for confidentiality in excess of 12 months). One copy of all wireline logs and geologist well report shall be attached with this form. ALL CEMENTING TICKETS MUST BE ATTACHED. Submit CP-4 form with all plugged wells. Submit CP-111 form with all temporarily abandoned wells.

All requirements of the statutes, rules and regulations promulgated to regulate the oil and gas industry have been fully complied with and the statements herein are complete and correct to the best of my knowledge.

Signature By: Larry M. Jack
Title Larry M. Jack, Production Mgr. Date 8/25/93
Subscribed and sworn to before me this 25 day of August, 1993.
Notary Public: Kerran Redington
Date Commission Expires 2/8/97

KERRAN REDINGTON
NOTARY PUBLIC
STATE OF KANSAS
My Appt. Exp. 2-8-97

K.C.C. OFFICE USE ONLY
F Letter of Confidentiality Attached
C Wireline Log Received
C Geologist Report Received
Distribution
 KCC SWD/Rep NGPA
 KGS Plug Other (Specify)

Operator Name Murfin Drilling Co., Inc. Lease Name T. Hall Well # 1-2
 Sec. 2 Twp. 12S Rge. 20W East County Ellis
 West

INSTRUCTIONS: Show important tops and base of formations penetrated. Detail all cores. Report all drill stem tests giving interval tested, time tool open and closed, flowing and shut-in pressures, whether shut-in pressure reached static level, hydrostatic pressures, bottom hole temperature, fluid recovery, and flow rates if gas to surface during test. Attach extra sheet if more space is needed. Attach copy of log.

Drill Stem Tests Taken Yes No
 (Attach Additional Sheets.)
 Samples Sent to Geological Survey Yes No
 Cores Taken Yes No
 Electric Log Run Yes No
 (Submit Copy.)
 List All E.Logs Run:

Log Formation (Top), Depth and Datum Sample
 Name Top Datum

Geological report attached.

Drill stem test attached.

CASING RECORD New Used

Report all strings set-conductor, surface, intermediate, production, etc.

Purpose of String	Size Hole Drilled	Size Casing Set (In O.D.)	Weight Lbs./Ft.	Setting Depth	Type of Cement	# Sacks Used	Type and Percent Additives
Surface	12 1/4	8 5/8	24#	261	60/40 Poz	165	2%gel, 3%cc

ADDITIONAL CEMENTING/SQUEEZE RECORD

Purpose:	Depth Top Bottom	Type of Cement	#Sacks Used	Type and Percent Additives
<input type="checkbox"/> Perforate				
<input type="checkbox"/> Protect Casing				
<input type="checkbox"/> Plug Back TD				
<input type="checkbox"/> Plug Off Zone				

Shots Per Foot	PERFORATION RECORD - Bridge Plugs Set/Type Specify Footage of Each Interval Perforated	Acid, Fracture, Shot, Cement Squeeze Record (Amount and Kind of Material Used)	Depth

TUBING RECORD Size Set At Packer At Liner Run Yes No

Date of First, Resumed Production, SWD or Inj. Producing Method Flowing Pumping Gas Lift Other (Explain)

Estimated Production Per 24 Hours Oil Bbls. Gas Mcf Water Bbls. Gas-Oil Ratio Gravity

Disposition of Gas: Vented Sold Used on Lease (If vented, submit ACO-18.) **METHOD OF COMPLETION** Open Hole Perf. Dually Comp. Commingled Other (Specify) Production Interval

15-051-24847-00-00

ORIGINAL

TRILOBITE TESTING, L.L.C.

CONFIDENTIAL

P.O. Box 362 • Hays, Kansas 67601

Drill-Stem Test Data

API # 15-051-24847

Well Name T. HALL #1-2 Test No. 1 Date 8-12-93
 Company MURFIN DRILLING CO INC Zone KC
 Address 250 N WATER SWT #300 WICHITA KS 67202 Elevation 2191
 Co. Rep./Geo. ROGER WELTY Cont. MURFINRIG #2 Est. Ft. of Pay _____
 Location: Sec. 2 Twp. 12S Rge. 20W Co. ELLIS State KS

Interval Tested 3520-3545 Drill Pipe Size 4.5" XH
 Anchor Length 25 Wt. Pipe I.D. - 2.7 Ft. Run _____
 Top Packer Depth 3515 Drill Collar - 2.25 Ft. Run 466
 Bottom Packer Depth 3520 Mud Wt. 9.5 lb/Gal.
 Total Depth 3545 Viscosity 43 Filtrate 9.6

Tool Open @ 4:33 PM Initial Blow WEAK-BUILDING TO 1 1/2"
 Final Blow WEAK-DIED IN 25 MINUTES

~~CONFIDENTIAL~~ RELEASED

Recovery - Total Feet 90 Flush Tool? NO SEP 6 1994
 Rec. 90 Feet of MUDDY WATER 60%WATER/40%MUD FROM CONFIDENTIAL
 Rec. _____ Feet of _____
 Rec. _____ Feet of _____
 Rec. _____ Feet of _____
 Rec. _____ Feet of _____

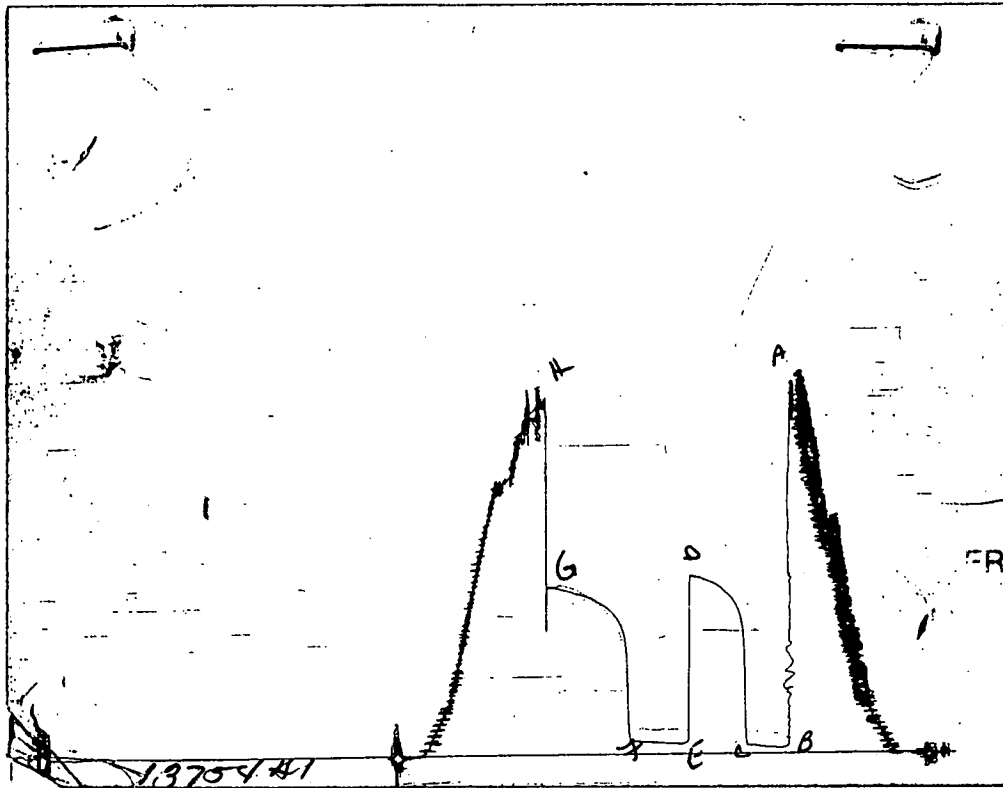
BHT 117 °F Gravity _____ °API @ _____ °F Corrected Gravity _____ °API
 RW 0.34 @ 80 °F Chlorides 56000 ppm Recovery Chlorides 22000 ppm System

(A) Initial Hydrostatic Mud 1978.5 PSI AK1 Recorder No. 13754 Range 4000
 (B) First Initial Flow Pressure 46.5 PSI @ (depth) 3524 w / Clock No. 27501
 (C) First Final Flow Pressure 57.2 PSI AK1 Recorder No. 7437 Range 4200
 (D) Initial Shut-in Pressure 916.5 PSI @ (depth) 3541 Clock No. 27567
 (E) Second Initial Flow Pressure 67.5 PSI AK1 Recorder No. _____ Range _____
 (F) Second Final Flow Pressure 79.4 PSI @ (depth) _____ Clock No. _____
 (G) Final Shut-in Pressure 849.8 PSI Initial Opening 30 Final Flow 45
 (H) Final Hydrostatic Mud 1846.5 PSI Initial Shut-in 45 Final Shut-in 60

RECEIVED /
 STATE CORPORATION COMMISSION
 9-2-1993
 SEP 2 1993
 CONSERVATION DIVISION
 Wichita, Kansas

Our Representative DAN BANGLE

15-051-24847-00-00



RCU
AUG 25
8-25
CONFIDENTIAL

RELEASED
9-6-1994
SEP 6 1994

FROM CONFIDENTIAL

This is an actual photograph of recorder chart

	FIELD READING	OFFICE READING
(A) INITIAL HYDROSTATIC MUD	1966	1978.5
(B) FIRST INITIAL FLOW PRESSURE	39	46.5
(C) FIRST FINAL FLOW PRESSURE	49	57.2
(D) INITIAL CLOSED-IN PRESSURE	907	916.5
(E) SECOND INITIAL FLOW PRESSURE	59	
(F) SECOND FINAL FLOW PRESSURE	68	
(G) FINAL CLOSED-IN PRESSURE	837	
(H) FINAL HYDROSTATIC MUD	1926	

RECEIVED 87.5
STATE CORPORATION COMMISSION
79.4
SEP 02 1993 9-2-1993
849.8
CONSERVATION DIVISION
Wichita, Kansas
1846.5

TRILOBITE TESTING L.L.C.

P.O. Box 362 • Hays, Kansas 67601

CONFIDENTIAL

Test Ticket ORIGINAL No 6165

Dry

Well Name & No. <u>F. Hall #1-2</u>	Test No. <u>1</u>	Date <u>8-12-93</u>
Company <u>Murfin Drilg. Co, Inc.</u>	Zone Tested <u>KC</u>	
Address <u>250 N. WTR. Wichita, Ks. 67202</u>	Elevation <u>2191 K.B.</u>	
Co. Rep./Geo. <u>Roger Wilty</u>	Cont. <u>Murfin #2</u>	Est. Ft. of Pay _____
Location: Sec. <u>2</u>	Twp. <u>12</u>	Rge. <u>20</u>
	Co. <u>Ellis</u>	State <u>Ks.</u>
No. of Copies _____	Distribution Sheet _____	Yes _____ No _____
Turnkey _____	Yes <u>X</u>	No _____
Evaluation _____		

Interval Tested <u>3520 - 3545</u>	Drill Pipe Size <u>4.5 XH</u>
Anchor Length <u>25</u>	Top Choke — 1" _____ Bottom Choke — 1/4" _____
Top Packer Depth <u>3515</u>	Hole Size — 7 7/8" _____ Rubber Size — 6 3/4" _____
Bottom Packer Depth <u>3520</u>	Wt. Pipe I.D. — 2.7 Ft. Run _____
Total Depth <u>3545</u>	Drill Collar — 2.25 Ft. Run <u>466'</u>
Mud Wt. <u>9.5</u> lb/gal.	Viscosity <u>43</u> Filtrate <u>9.6</u>
Tool Open @ <u>4:33 p.m.</u>	Initial Blow <u>wk - building to 1 1/2"</u>
Final Blow <u>wk - Died in 25 min.</u>	<u>6-25</u> <u>AUG 25</u>

CONFIDENTIAL

Recovery — Total Feet <u>90</u>	Feet of Gas in Pipe _____	Flush Tool? _____
Rec. <u>90</u> Feet Of <u>mdy wtr.</u>	%gas _____ %oil <u>60</u>	%water <u>40</u> %mud _____
Rec. _____ Feet Of _____	%gas _____ %oil _____	%water _____ %mud _____
Rec. _____ Feet Of _____	RELEASED	
Rec. _____ Feet Of _____	%gas _____ %oil _____	%water _____ %mud _____
Rec. _____ Feet Of _____	%gas _____ %oil _____	%water _____ %mud _____

BHT 117 °F Gravity FROM CONFIDENTIAL °F Corrected Gravity _____ °API

RW .34 @ 80 °F Chlorides 56,200 ppm Recovery Chlorides 22,000 ppm System

(A) Initial Hydrostatic Mud 1966 PSI AK1 Recorder No. 13754 Range 4000

(B) First Initial Flow Pressure 39 PSI @ (depth) 3524 w/Clock No. 27501

(C) First Final Flow Pressure 49 PSI AK1 Recorder No. 7437 Range 4200

(D) Initial Shut-In Pressure 207 PSI @ (depth) 3541 w/Clock No. 27567

(E) Second Initial Flow Pressure 59 PSI AK1 Recorder No. _____ Range _____

(F) Second Final Flow Pressure 68 PSI @ (depth) _____ w/Clock No. _____

(G) Final Shut-In Pressure 837 PSI Initial Opening 30 Test _____

(H) Final Hydrostatic Mud 1826 PSI Initial Shut-In 45 Jars _____

TRILOBITE TESTING L.L.C. SHALL NOT BE LIABLE FOR DAMAGE OF ANY KIND OF THE PROPERTY OR PERSONNEL OF THE ONE FOR WHOM A TEST IS MADE, OR FOR ANY LOSS SUFFERED OR SUSTAINED, DIRECTLY OR INDIRECTLY, THROUGH THE USE OF ITS EQUIPMENT, OR ITS STATEMENTS OR OPINION CONCERNING THE RESULTS OF ANY TEST. TOOLS LOST OR DAMAGED IN THE HOLE SHALL BE PAID FOR AT COST BY THE PARTY FOR WHOM THE TEST IS MADE.

Approved By Roger Wilty

Our Representative Don Baner

Final Flow 45 Safety Joint _____

Final Shut-In 60 Straddle _____

Circ. Sub _____

Sampler _____

Extra Packer _____

Other _____

RECEIVED
STATE CORP. COMMISSION
9-2-1993
SEP 02 1993
CONSERVATION DIVISION
Wichita, Kansas

15-051-24847-00-00

TRILOBITE TESTING, L.L.C.

P.O. Box 362 • Hays, Kansas 67601

ORIGINAL

CONFIDENTIAL

Drill-Stem Test Data

Well Name T. HALL #1-2 Test No. 2 Date 8-13-93
 Company MURFIN DRILLING CO INC Zone KC
 Address 250 N WATER SWT #300 WICHITA KS 67202 Elevation 2191
 Co. Rep./Geo. ROGER WELTY Cont. MURFINRIG #2 Est. Ft. of Pay _____
 Location: Sec. 2 Twp. 12S Rge. 20W Co. ELLIS State KS

Interval Tested 3543-3610 Drill Pipe Size 4.5" XH
 Anchor Length 67 Wt. Pipe I.D. - 2.7 Ft. Run _____
 Top Packer Depth 3538 Drill Collar - 2.25 Ft. Run _____
 Bottom Packer Depth 3543 Mud Wt. _____ lb/Gal.
 Total Depth 3610 Viscosity _____

Tool Open @ 11:32 AM Initial Blow WEAK 1/4" BLOW BUILDING TO 2 1/2"

Final Blow SURFACE BLOW BUILDING TO 1 1/2"

Recovery - Total Feet 180 Flush Tool? NO

RELEASED
9-6-1994
SEP 6 1994

Rec. 60 Feet of SLIGHTLY OIL SPECKED MUD 2%OIL/98%MUD
 Rec. 120 Feet of THIN WATERY MUD
 Rec. _____ Feet of _____
 Rec. _____ Feet of _____
 Rec. _____ Feet of _____

FROM CONFIDENTIAL

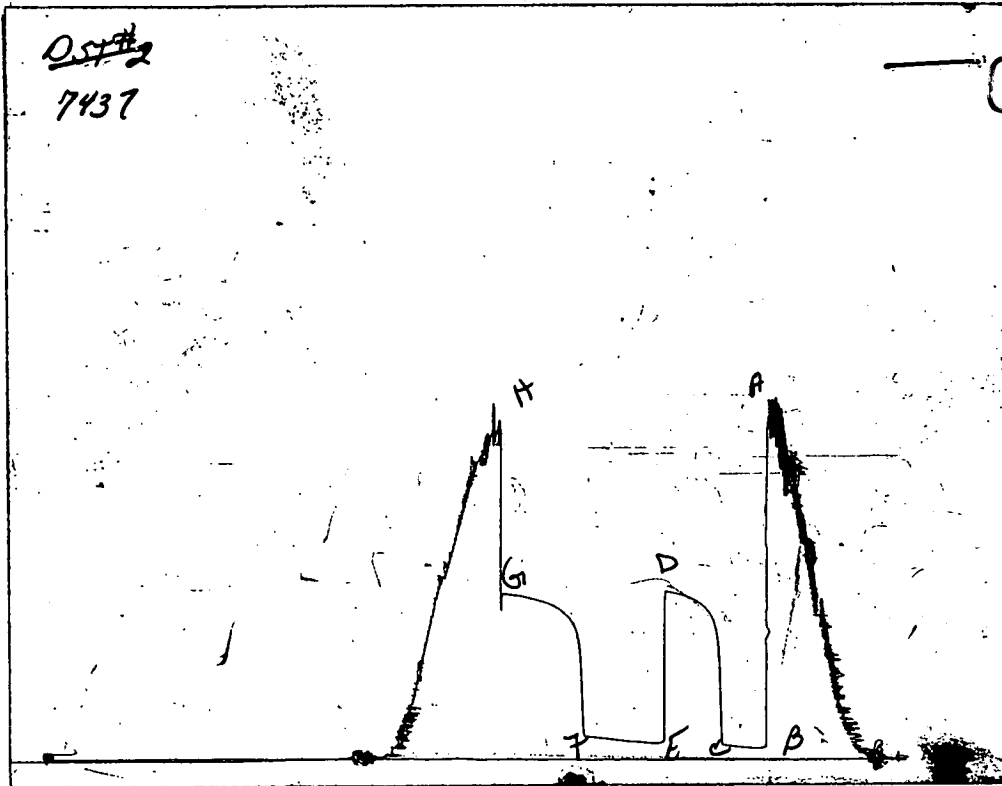
BHT 114 °F Gravity _____ °API @ _____ °F Corrected Gravity _____ °API
 RW _____ @ _____ °F Chlorides _____ ppm Recovery Chlorides _____ ppm System

(A) Initial Hydrostatic Mud 1934.5 PSI AK1 Recorder No. 13754 Range 4000
 (B) First Initial Flow Pressure 79.5 PSI @ (depth) 3579 w / Clock No. 27501
 (C) First Final Flow Pressure 96.4 PSI AK1 Recorder No. 7437 Range 4200
 (D) Initial Shut-in Pressure 925.2 PSI @ (depth) 3607 w / Clock No. 8176
 (E) Second Initial Flow Pressure 106.3 PSI AK1 Recorder No. _____ Range _____
 (F) Second Final Flow Pressure 129.4 PSI @ (depth) _____ w / Clock No. _____
 (G) Final Shut-in Pressure 903.1 PSI Initial Opening 30 Final Flow 60
 (H) Final Hydrostatic Mud 1889.7 PSI Initial Shut-in 45 Final Shut-in _____

RECEIVED
STATE CORPORATION COMMISSION
9-2-1993
SEP 02 1993
CONSERVATION DIVISION
Wichita, Kansas 67202

Our Representative PAUL SIMPSON

CONFIDENTIAL



CONFIDENTIAL

8-25
AUG 25

RELEASED
9/6/1994
6 1994

FROM CONFIDENTIAL

This is an actual photograph of recorder chart

RECEIVED
KANSAS CORPORATION COMMISSION
9-2-1993
SEP 02 1993
CONSERVATION DIVISION
WICHITA, KS

	FIELD READING	OFFICE READING
(A) INITIAL HYDROSTATIC MUD	1926	1934.5
(B) FIRST INITIAL FLOW PRESSURE	68	79.5
(C) FIRST FINAL FLOW PRESSURE	88	96.4
(D) INITIAL CLOSED-IN PRESSURE	917	925.2
(E) SECOND INITIAL FLOW PRESSURE	98	106.3
(F) SECOND FINAL FLOW PRESSURE	118	129.4
(G) FINAL CLOSED-IN PRESSURE	897	903.14
(H) FINAL HYDROSTATIC MUD	1876	1889.7

15-051-24847-00-00

TRILOBITE TESTING L.L.C.

P.O. Box 362 • Hays, Kansas 67601

CONFIDENTIAL

Test Ticket ORIGINAL No 6166

Well Name & No. T Hall A 1-2 Test No. 2 Date 8-13-93
 Company Murfin Drilling Co, Inc Zone Tested KL
 Address _____ Elevation 2191
 Co. Rep./Geo. Roger Weldy Cont. Murfin #2 Est. Ft. of Pay _____
 Location: Sec. 2 Twp. 12S Rge. 20W Co. Ellis State KS
 No. of Copies _____ Distribution Sheet _____ Yes _____ No _____ Turnkey _____ Yes _____ No _____ Evaluation _____

Interval Tested 3543-3610 Drill Pipe Size 4 1/2 IH
 Anchor Length 67 Top Choke — 1" _____ Bottom Choke — 1/4" _____
 Top Packer Depth 3538 Hole Size — 7 7/8" _____ Rubber Size — 6 3/4" _____
 Bottom Packer Depth 3543 Wt. Pipe I.D. — 2.7 Ft. Run _____
 Total Depth 3610 Drill Collar — 2.25 Ft. Run 466
 Mud Wt. _____ lb/gal Viscosity _____ Filtrate _____
 Tool Open @ 11:32 AM Initial Blow weak run blow building to 2 1/2"
 Final Blow Surface blow building to 1 1/2"

AUG 25 6-25
CONFIDENTIAL

RECEIVED
KANSAS CORPORATION COMMISSION
SEP 02 1993
9-2-1993
CONSERVATION DIVISION
WICHITA, KS

Recovery — Total Feet	Feet of Gas In Pipe	Flush Tool?
Rec. <u>60</u> Feet Of <u>sl oil speckled mud</u> %gas <u>2</u> %oil _____ %water <u>98</u> %mud _____		
Rec. <u>120</u> Feet Of <u>thin watery mud</u> %gas _____ %oil _____ %water _____ %mud _____		
Rec. _____ Feet Of _____ %gas _____ %oil _____ %water _____ %mud _____		
Rec. _____ Feet Of _____ %gas _____ %oil _____ %water _____ %mud _____		
Rec. _____ Feet Of _____ %gas _____ %oil _____ %water _____ %mud _____		

RELEASED
9-6-1994

BHT 114 °F Gravity _____ °F Corrected Gravity _____ °API _____
 RW _____ @ _____ °F Chlorides _____ ppm Recovery Chlorides _____ ppm System
 (A) Initial Hydrostatic Mud 1926 PSI AK1 Recorder No. 13254 Range 4000
 (B) First Initial Flow Pressure 68 PSI @ (depth) 3579 w/Clock No. 27501
 (C) First Final Flow Pressure 88 PSI AK1 Recorder No. 7437 Range 4200
 (D) Initial Shut-In Pressure 917 PSI @ (depth) 3607 w/Clock No. 8176
 (E) Second Initial Flow Pressure 98 PSI AK1 Recorder No. _____ Range _____
 (F) Second Final Flow Pressure 118 PSI @ (depth) _____ w/Clock No. _____
 (G) Final Shut-In Pressure 897 PSI Initial Opening 30 Test _____
 (H) Final Hydrostatic Mud 1876 PSI Initial Shut-In 45 Jars _____

TRILOBITE TESTING L.L.C. SHALL NOT BE LIABLE FOR DAMAGE OF ANY KIND OF THE PROPERTY OR PERSONNEL OF THE ONE FOR WHOM A TEST IS MADE, OR FOR ANY LOSS SUFFERED OR SUSTAINED, DIRECTLY OR INDIRECTLY, THROUGH THE USE OF ITS EQUIPMENT, OR ITS STATEMENTS OR OPINION CONCERNING THE RESULTS OF ANY TEST. TOOLS LOST OR DAMAGED IN THE HOLE SHALL BE PAID FOR AT COST BY THE PARTY FOR WHOM THE TEST IS MADE.

Final Flow 60 Safety Joint _____
 Final Shut-In 60 Straddle _____
 Circ. Sub _____
 Sampler _____
 Extra Packer _____
 Other _____

Approved By: Roger Weldy
 Our Representative: Pam Simpson

15-051-24847-00-00
TRILOBITE TESTING, L.L.C.

P.O. Box 362 • Hays, Kansas 67601

CONFIDENTIAL

Drill-Stem Test Data

ORIGINAL

Well Name T. HALL #1-2 Test No. 3 Date 8-14-93
Company MURFIN DRILLING CO INC Zone BKC
Address 250 N WATER SWT #300 WICHITA KS 67202 Elevation 2191
Co. Rep./Geo. ROGER WELTY Cont. MURFINRIG #2 Est. Ft. of Pay _____
Location: Sec. 2 Twp. 12S Rge. 20W Co. ELLIS State KS

Interval Tested 3655-3735 Drill Pipe Size 4.5" XH
Anchor Length 80 Wt. Pipe I.D. - 2.7 Ft. Run _____
Top Packer Depth 3650 Drill Collar - 2.25 Ft. Run 466
Bottom Packer Depth 3655 Mud Wt. 9.7 lb/Gal.
Total Depth 3735 Viscosity 43 Filtrate 10.4

Tool Open @ 1:022 PM Initial Blow VERY WEAK SURFACE BLOW-DEAD IN 16 MINUTES

Final Blow NO BLOW

Recovery - Total Feet 10

Rec. 10 Feet of DRILLING MUD

Rec. _____ Feet of _____

Rec. _____ Feet of _____

Rec. _____ Feet of _____

Rec. _____ Feet of _____

BHT _____ °F Gravity _____ °API @ _____ °F Corrected Gravity _____ °API

RW _____ @ _____ °F Chlorides _____ ppm Recovery Chlorides _____ ppm System

(A) Initial Hydrostatic Mud 2046.5 PSI AK1 Recorder No. 7437 Range 4200

(B) First Initial Flow Pressure 69.7 PSI @ (depth) 3662 w / Clock No. 8376

(C) First Final Flow Pressure 69.7 PSI AK1 Recorder No. 13754 Range 4000

(D) Initial Shut-in Pressure 169.5 PSI @ (depth) 3732 w / Clock No. 27501

(E) Second Initial Flow Pressure 69.7 PSI AK1 Recorder No. _____ Range _____

(F) Second Final Flow Pressure 69.7 PSI @ (depth) _____ w / Clock No. _____

(G) Final Shut-in Pressure 116.2 PSI Initial Opening 30 Final Flow 30

(H) Final Hydrostatic Mud 2015.8 PSI Initial Shut-in 45 Final Shut-in 45

Our Representative PETE WAGGONER

RELEASED

SEP 6 1994
9-6-1994

FROM CONFIDENTIAL NO

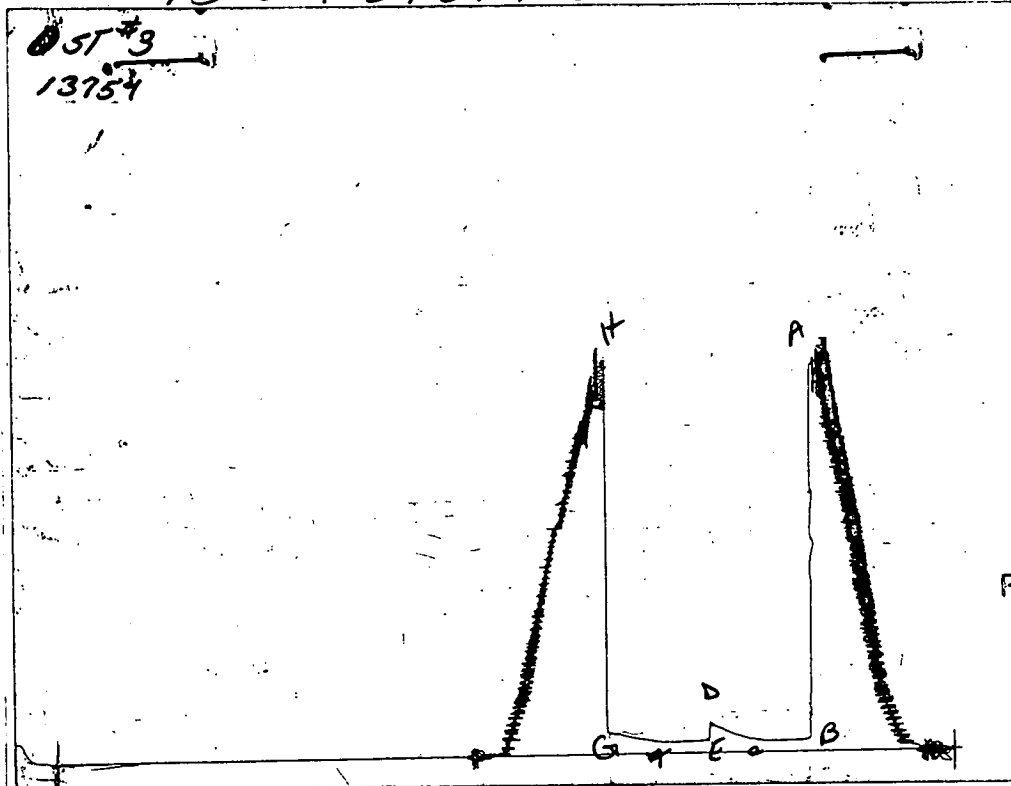
RECEIVED
KANSAS CORPORATION COMMISSION

SEP 02 1993
9-2-1993
CONSERVATION DIVISION
WICHITA, KS

AUG 25
8-25
CONFIDENTIAL

15-051-24847-00-00

ORIGINAL



8-25
AUG 25

CONFIDENTIAL

RELEASED
9-6-1994
SEP 6 1994

FROM CONFIDENTIAL

This is an actual photograph of recorder chart

RECEIVED
KANSAS CORPORATION COMMISSION
9-2-1993
SEP 02 1993
CONSERVATION DIVISION
WICHITA, KS

	FIELD READING	OFFICE READING
(A) INITIAL HYDROSTATIC MUD	2036	2046.5
(B) FIRST INITIAL FLOW PRESSURE	59	69.7
(C) FIRST FINAL FLOW PRESSURE	59	69.7
(D) INITIAL CLOSED-IN PRESSURE	157	169.5
(E) SECOND INITIAL FLOW PRESSURE	59	69.7
(F) SECOND FINAL FLOW PRESSURE	59	69.7
(G) FINAL CLOSED-IN PRESSURE	108	116.2
(H) FINAL HYDROSTATIC MUD	2006	2015.8

15-051-24847-00-00
TRILOBITE TESTING L.L.C.

P.O. Box 362 • Hays, Kansas 67601

ORIGINAL
 CONFIDENTIAL

Test Ticket

No 6167

Well Name & No. T Hall #1-2 Test No. 3 Date 8-14-93
 Company Martin Drilling Company Inc. Zone Tested BKC
 Address _____ Elevation 2191 KB
 Co. Rep./Geo. Roger Walby Cont. Martin Drilling Co. Inc. Est. Ft. of Pay _____
 Location: Sec. 2 Twp. 12S Rge. 20W Co. 511S State Ks.
 No. of Copies _____ Distribution Sheet _____ Yes _____ No _____ Turnkey _____ Yes _____ No _____ Evaluation _____

AUG 25
 8-25
 CONFIDENTIAL

Interval Tested 3655 - 3735 Drill Pipe Size 4 1/2" x H
 Anchor Length 80' Top Choke - 1" _____ Bottom Choke - 3/4" _____
 Top Packer Depth 3650 Hole Size - 7 7/8" _____ Rubber Size - 6 3/4" _____
 Bottom Packer Depth 3655 Wt. Pipe I.D. - 2.7 Ft. Run _____
 Total Depth 3735 Drill Collar - 2.25 Ft. Run 466
 Mud Wt. 9.7 lb/gal. Viscosity 43 Filtrate 10.4
 Tool Open @ 1:02 pm Initial Blow VERY WEAK SURFACE BLOW - DEAD IN 16 MIN
 Final Blow No blow

Recovery - Total Feet 10' Feet of Gas In Pipe _____ Flush Tool? No

Rec. _____ Feet Of _____	% gas	% oil	% water	% mud
<u>10</u> Feet Of <u>delq mud</u>			<u>100</u>	<u>mud</u>
Rec. _____ Feet Of _____	% gas	% oil	% water	% mud
Rec. _____ Feet Of _____	% gas	% oil	% water	% mud
Rec. _____ Feet Of _____	% gas	% oil	% water	% mud
Rec. _____ Feet Of _____	% gas	% oil	% water	% mud

RECEIVED
 KANSAS CORPORATION COMMISSION
 9-2-1993
 SEP 02 1993

BHT _____ °F Gravity _____ °F Corrected Gravity _____ °API
 RW _____ @ _____ °F Chlorides _____ ppm Recovery Chlorides _____ ppm System

(A) Initial Hydrostatic Mud 2036 PSI AK1 Recorder No. 7437 Range 4200
 (B) First Initial Flow Pressure 59 PSI @ (depth) 3662 w/Clock No. 8376
 (C) First Final Flow Pressure 59 PSI AK1 Recorder No. 13254 Range 4000
 (D) Initial Shut-In Pressure 157 PSI @ (depth) 3732 w/Clock No. 27501
 (E) Second Initial Flow Pressure 59 PSI AK1 Recorder No. _____ Range _____
 (F) Second Final Flow Pressure 59 PSI @ (depth) _____ w/Clock No. _____
 (G) Final Shut-In Pressure 108 PSI Initial Opening 30 Test r
 (H) Final Hydrostatic Mud 2006 PSI Initial Shut-In 45 Jars _____

RELEASED

TRILOBITE TESTING L.L.C. SHALL NOT BE LIABLE FOR DAMAGE OF ANY KIND OF THE PROPERTY OR PERSONNEL OF THE ONE FOR WHOM A TEST IS MADE, OR FOR ANY LOSS SUFFERED OR SUSTAINED, DIRECTLY OR INDIRECTLY, THROUGH THE USE OF ITS EQUIPMENT, OR ITS STATEMENTS OR OPINION CONCERNING THE RESULTS OF ANY TEST. TOOLS LOST OR DAMAGED IN THE HOLE SHALL BE PAID FOR AT COST BY THE PARTY FOR WHOM THE TEST IS MADE.

Final Flow 30 Safety Joint 9-6-1994
 Final Shut-In 45 Straddle SEP 6 1994

Approved By Roger Walby
 Our Representative R. C. Wagoner

Circ. Sub
 Sampler FROM CONFIDENTIAL

Extra Packer _____
 Other _____
 TOTAL PRICE \$ _____

15-051-24847-00-00

483-2627, Russell, Kansas
Phone 316-793-5861, Great Bend, Kansas

CONFIDENTIAL

Phone Plainville 913-434-2812

Phone Ness City 913-798-3843

ALLIED CEMENTING CO., INC.

4557

Home Office P. O. Box 31

Russell, Kansas 67665

New

Date	Sec.	Fwp.	Range	Called Out	On Location	Job Start	Finish
8-15-93	Z	12	20w	6:30pm	8:00pm	8:15pm	12:15am
Lease	T-Hall	Well No.	1-2	Location	7N 1E 1/2 S 1w Ellis	County	Ellis
						State	KS

Contractor	MURFIN DRIG
Type Job	Plug
Hole Size	7 7/8
Csg.	T.D. 3935
Tbg. Size	Depth
Drill Pipe	Depth
Tool	Depth
Cement Left in Csg.	Shoe Joint
Press Max.	Minimum
Meas Line	Displace
Perf.	

Owner	To Allied Cementing Co., Inc. You are hereby requested to rent cementing equipment and furnish cementer and helper to assist owner or contractor to do work as listed.
Charge To	MURFIN DRIG
Street	250 N. Water Suite 300
City	Wichita
State	Kansas
The above was done to satisfaction and supervision of owner agent or contractor.	

EQUIPMENT

Pumptrk	No. 153	Cementer	Bill L. MARK
		Helper	
Pumptrk	No.	Cementer	
		Helper	
Bulktrk	282	Driver	Wayne
Bulktrk		Driver	

Purchase Order No.	x Duane Hickert
CEMENT	
Amount Ordered	2150.00 @ 40 6% gel 1/4# Ploset/sack
Consisting of	
Common	129 @ 575 = 741.75
Poz. Mix	86 @ 3.00 = 258.00
Gel.	3 @ 7.00 = 21.00
Chloride	
Quickset	
Fls Seed	51 @ 1.00 = 51.00
Sales Tax	

DEPTH of Job

Reference:	Pumptrk.	430.00
	225/mile	56.25
1	8 5/8 Dry hole plug	21.00
	Sub Total	
	Tax	
	Total	507.25

Handling	@ 1.00	215.00
Mileage	40 / 50 / mile	215.00
25		
Floating Equipment		1545.15

Remarks:

- 25 sk @ 3822'
- 25 sk @ 1600'
- 100 sk @ 840'
- 40 sk @ 310'
- 10 sk @ 40'
- 15 sk in Rat hole

RECEIVED
STATE CORPORATION COMMISSION
9-2-1993
SEP 02 1993
CONSERVATION DIVISION
Wichita, Kansas

RELEASED
SEP 6 1994
9-6-1994
FROM CONFIDENTIAL

15-051-24847-00-00

CONFIDENTIAL

913-483-2627, Russell, Kansas

Phone Plainville 913-434-2812

Phone 316-793-5861, Great Bend, Kansas

Phone Ness City 913-798-3843

ALLIED CEMENTING CO., INC.

Home Office P. O. Box 31

Russell, Kansas 67665

5575

NEW

Date	8-8-93	Sec.	2	Twp.	12S	Range	20W	Called Out	6:00 Am	On Location	7:50 Am	Job Start	10:46 Am	Finish	11:00 Am																
Lease	T-Hall	Well No.	1-2	Location			7 N 1 E 1 S 1 W Ellis	County	Ellis	State	Kan																				
Contractor								Muffin #2																							
Type Job																Surface															
Hole Size								12 1/2								T.D.								261							
Csg.								8 3/8 23 #								Depth								261							
Tbg. Size																Depth															
Drill Pipe								4 1/2								Depth															
Tool																Depth								nil							
Cement Left in Csg.								15								Shoe Joint								AUG 2 5							
Press Max.																Minimum								8-25							
Meas Line																Displace															
Perf.																															

EQUIPMENT

No.	Cementer	Bheikern
Pumptrk 276	Helper	
No.	Cementer	
Pumptrk 153	Helper	D Funk
	Driver	
Bulktrk 283		
Bulktrk	Driver	W Mcghy

DEPTH of Job		
Reference:	Pump Truck	430.00
	2 2 1/2" x 26' mix	58.50
	1 8 3/8 Surface Plug	42.00
	Sub Total	
	Tax	
	Total	530.50

Remarks: Ran 6 hrs of 8 3/8
Cement w/ 165 lbs 6/40 3-2
Pump plug w/ 15 3/4 hrs of water
Cement did circulate

Owner: Same
To Allied Cementing Co., Inc.
You are hereby requested to rent cementing equipment and furnish cementer and helper to assist owner or contractor to do work as listed.

Charge To: Muffin Drilling
Street: 250 N. Water Suite 300
City: Wichita State: Kansas

The above was done to satisfaction and supervision of owner agent or contractor.

Purchase Order No. *Keith Van Buren*

CEMENT

Amount Ordered	165 lbs 6/40 3% CC 2 1/2 gal	
Consisting of		
Common	99 lbs @ 5.75	569.25
Poz. Mix	6 lbs @ 3.00	198.00
Gel.	3 lbs @ N/C	N/C
Chloride	5 lbs @ 25.00	125.00
Quickset		

Handling	@ 1.00	165.00
Mileage	42 / 26 / mile	171.60
Sales Tax		
Sub Total		
Total		1228.85

RECEIVED STATE CORPORATION COMMISSION
9-2-1993
SEP 02 1993
CONSERVATION DIVISION
Wichita, Kansas

RELEASED
SEP 6 1994
9-6-1994

FROM CONFIDENTIAL
*Update 5 lbs to pit
thanks*