

TYPE

NOTICE OF INTENTION TO DRILL

C-1
MI-1331

TO BE FILED WITH THE STATE CORPORATION COMMISSION
PRIOR TO COMMENCEMENT OF WELL

API Number 15-065-21,127
(For office use only) -0000

1. Operator A. Scott Ritchie
Suite 950 - 125 N. Market
Address Wichita, Kansas 67202

Starting Date May 21, 1979

County Graham

2. Contractor Murfin Drilling Co.
617 Union Center
Address Wichita, Kansas 67202

Sec 14 Twp 10 S Rge 22 ^EW

Spot Location NW SE NW

3. Type of Equipment: Rotary Cable Tool _____

Nearest Lease Line 990 ft.

4. Well to be Drilled for: Oil Gas _____

Lease Name Holmquist-Holmes

Disposal _____ Input _____ Other _____

5. Depth of Deepest Fresh Water within 1 mile 80 ft.

Well No. 6

6. Depth of Municipal Water Well within 3 miles none ft.

7. Depth to Protect all Fresh Water 550 ~~105~~ ft.

Est. Total Depth 3800 ft.

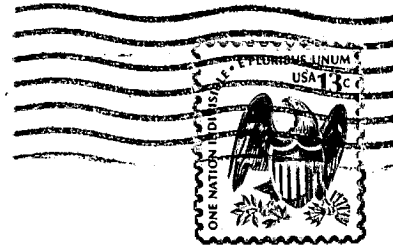
8. Amount of Surface Casing to be set 150 ft.

9. Alternate No. 1 _____ No. 2

REMARKS:

OPERATOR STATES THAT HE WILL COMPLY WITH K. S. A. 55-128

Signature of Operator F. Judson Hipps
F. Judson Hipps for A. Scott Ritchie



**State Corporation Commission of Kansas
Conservation Division
245 North Water
Wichita, Kansas 67202**

**RECEIVED
STATE CORPORATION COMMISSION**

**MAY 17 1979
05-17-79
CONSERVATION DIVISION
Wichita, Kansas**

(IF PREFERRED, MAIL IN ENVELOPE)