

ORIGINAL

1/29/10

Form ACO-1
September 1999
Form Must Be Typed

KANSAS CORPORATION COMMISSION
OIL & GAS CONSERVATION DIVISION

WELL COMPLETION FORM
WELL HISTORY - DESCRIPTION OF WELL & LEASE

CONFIDENTIAL

Operator: License # 5822
Name: VAL ENERGY, INC
Address: 200 W. DOUGLAS SUITE 520
City/State/Zip: WICHITA, KS 67202
Purchaser: MACLASKEY
Operator Contact Person: TODD ALLAM
Phone: (316) 263-6688
Contractor: Name: VAL ENERGY, INC.
License: 5822

Wellsite Geologist: WILLIS NIGH
Designate Type of Completion:
 New Well Re-Entry Workover
 Oil SWD SIOW Temp. Abd.
 Gas ENHR SIGW
 Dry Other (Core, WSW, Expl., Cathodic, etc)

If Workover/Re-entry: Old Well Info as follows:
Operator: _____
Well Name: _____
Original Comp. Date: _____ Original Total Depth: _____
 Deepening Re-perf. Conv. to Enhr./SWD
 Plug Back Plug Back Total Depth
 Commingled Docket No. _____
 Dual Completion Docket No. _____
 Other (SWD or Enhr.?) Docket No. _____

10/28/08 11/3/08 11/17/08
Spud Date or 2009 Date Reached TD Completion Date or
Recompletion Date Recompletion Date

API No. 15 - 15-097-21646
County: KIOWA
S/2 NE NE NW Sec. 20 Twp. 27 S. R. 17 East West
350 feet from S (N) (circle one) Line of Section
2970 feet from (E) W (circle one) Line of Section

Footages Calculated from Nearest Outside Section Corner:
(circle one) (N) SE NW SW
Lease Name: TAYLOR FARMS Well #: 1-20
Field Name: UNKNOWN

Producing Formation: MISSISSIPPIAN
Elevation: Ground: 2143 Kelly Bushing: 2153
Total Depth: 4820 Plug Back Total Depth: 4803
Amount of Surface Pipe Set and Cemented at 455 Feet
Multiple Stage Cementing Collar Used? Yes No
If yes, show depth set _____ Feet
If Alternate II completion, cement circulated from _____
feet depth to _____ w/ _____ sx cm.

Drilling Fluid Management Plan

(Data must be collected from the Reserve Pit)

Chloride content 27000 ppm Fluid volume 600 bbls
Dewatering method used HAULED

Location of fluid disposal if hauled offsite:
Operator Name: ROBERTS RESOURCES
Lease Name: MARY SWD License No.: 32781
Quarter NE Sec. 16 Twp. 29 S. R. 18 East West
County: KIOWA Docket No.: D-28396

AH 1-Dig. 4/13/09

INSTRUCTIONS: An original and two copies of this form shall be filed with the Kansas Corporation Commission, 130 S. Market - Room 2078, Wichita, Kansas 67202, within 120 days of the spud date, recompletion, workover or conversion of a well. Rule 82-3-130, 82-3-106 and 82-3-107 apply. Information of side two of this form will be held confidential for a period of 12 months if requested in writing and submitted with the form (see rule 82-3-107 for confidentiality in excess of 12 months). One copy of all wireline logs and geologist well report shall be attached with this form. ALL CEMENTING TICKETS MUST BE ATTACHED. Submit CP-4 form with all plugged wells. Submit CP-111 form with all temporarily abandoned wells.

All requirements of the statutes, rules and regulations promulgated to regulate the oil and gas industry have been fully complied with and the statements herein are complete and correct to the best of my knowledge.

Signature: Todd Allam
Title: PRESIDENT Date: 1/29/09

Subscribed and sworn to before me this 29 day of JANUARY 2009.

Notary Public: Brandi Wyer
Date Commission Expires: 2/24/2010

KCC Office Use ONLY
 Letter of Confidentiality Received
 If Denied, Yes Date: _____
 Wireline Log Received
 Geologist Report Received
 UIC Distribution

RECEIVED
KANSAS CORPORATION COMMISSION
JAN 30 2009

NOTARY PUBLIC - State of Kansas
BRANDI WYER
My Appt. Expires 2/24/2010

CONSERVATION DIVISION
WICHITA, KS

Operator Name: VAL ENERGY, INC Lease Name: TAYLOR FARMS Well #: 1-20
 Sec. 20 Twp. 27 S. R. 17 East West County: KIOWA

INSTRUCTIONS: Show important tops and base of formations penetrated. Detail all cores. Report all final copies of drill stems tests giving interval tested, time tool open and closed, flowing and shut-in pressures, whether shut-in pressure reached static level, hydrostatic pressures, bottom hole temperature, fluid recovery, and flow rates if gas to surface test, along with final chart(s). Attach extra sheet if more space is needed. Attach copy of all Electric Wireline Logs surveyed. Attach final geological well site report.

Drill Stem Tests Taken Yes No
 (Attach Additional Sheets)
 Samples Sent to Geological Survey Yes No
 Cores Taken Yes No
 Electric Log Run Yes No
 (Submit Copy)

Log Formation (Top), Depth and Datum Sample
 Name Top Datum

List All E. Logs Run: *rec'd 3 logs w/ ACOI:
 DIL; MICRO LOG; COMPSD. DENS./
 NEUT. LOG*

KCC
JAN 29 2009
CONFIDENTIAL

*See
 logs*

CASING RECORD <input checked="" type="checkbox"/> New <input type="checkbox"/> Used							
Report all strings set-conductor, surface, intermediate, production, etc.							
Purpose of String	Size Hole Drilled	Size Casing Set (In O.D.)	Weight Lbs. / Ft.	Setting Depth	Type of Cement	# Sacks Used	Type and Percent Additives
SURFACE	12 1/4	8 5/8	24	455	60/40 POZ	450	3%CC 2%GEL
PRODUCTION	7 7/8	5 1/2	15	4803	AA2	125	

ADDITIONAL CEMENTING / SQUEEZE RECORD				
Purpose:	Depth Top Bottom	Type of Cement	#Sacks Used	Type and Percent Additives
<input type="checkbox"/> Perforate <input type="checkbox"/> Protect Casing <input type="checkbox"/> Plug Back TD <input type="checkbox"/> Plug Off Zone				

Shots Per Foot	PERFORATION RECORD - Bridge Plugs Set/Type Specify Footage of Each Interval Perforated	Acid, Fracture, Shot, Cement Squeeze Record (Amount and Kind of Material Used)	Depth
2 SPF	4696-4705	600 GAL 15% NE/FE ACID	4696-4705

RECEIVED
KANSAS CORPORATION COMMISSION
JAN 30 2009
CONSERVATION DIVISION
WICHITA, KS

TUBING RECORD	Size	Set At	Packer At	Liner Run	<input type="checkbox"/> Yes <input checked="" type="checkbox"/> No
Date of First, Resumerd Production, SWD or Enhr.	Producing Method <input type="checkbox"/> Flowing <input checked="" type="checkbox"/> Pumping <input type="checkbox"/> Gas Lift <input type="checkbox"/> Other (Explain)				
Estimated Production Per 24 Hours	Oil Bbls.	Gas Mcf	Water Bbls.	Gas-Oil Ratio	Gravity

Disposition of Gas Vented Sold Used on Lease (If vented, Submit ACO-18.)
 METHOD OF COMPLETION Open Hole Perf. Dually Comp. Commingled
 Production Interval Other (Specify)



PAGE 2 of 2	CUST NO 1970-VAL002	INVOICE DATE 11/07/2008
INVOICE NUMBER 1970002752		

Pratt

B VAL ENERGY
I 200 W. DOUGLAS
L SUITE 520
T WICHITA KS 67202
O ATTN:

J LEASE NAME Taylor Trust *PARMS*
O WELL NO. 1-20
B COUNTY Kiowa
S STATE KS
I JOB DESCRIPTION Cement-New Well Casing/Pipe
T JOB CONTACT
[Signature]

JOB #	EQUIPMENT #	PURCHASE ORDER NO.		TERMS	DUE DATE
1970-02746	301			Net 30 DAYS	12/07/2008
		QTY	U of M	UNIT PRICE	INVOICE AMOUNT
Cement 60/40 POZ		25.00	EA	12.000	300.00 T
Cement AA2 Cement		125.00	EA	17.000	2,125.00 T
Supervisor Service Supervisor Charge		1.00	Hour	175.000	175.00

KCC
JAN 20 2009
CONFIDENTIAL

RECEIVED
KANSAS CORPORATION COMMISSION
JAN 30 2009
CONSERVATION DIVISION
WICHITA, KS

PLEASE REMIT TO: BASIC ENERGY SERVICES, LP PO BOX 841903 DALLAS, TX 75284-1903	SEND OTHER CORRESPONDENCE TO: BASIC ENERGY SERVICES, LP PO BOX 10460 MIDLAND, TX 79702	BID DISCOUNT SUBTOTAL TAX INVOICE TOTAL	-2,626.65 8,793.55 296.60 9,090.15
--	--	--	---



PAGE 1 of 2	CUST NO 1970-VAL002	INVOICE DATE 11/07/2008
INVOICE NUMBER 1970002752		

Pratt

B I L L T O
 VAL ENERGY
 200 W. DOUGLAS
 SUITE 520
 WICHITA KS 67202
 ATTN:

J O B S I T E

LEASE NAME
 WELL NO.
 COUNTY
 STATE
 JOB DESCRIPTION
 JOB CONTACT

Farms
 Taylor Trust
 1-20 ^
 Kiowa
 KS
 Cement-New Well Casing/Pipe:
RECEIVED
 NOV 08 2008
Jan 25/09

9308

JOB #	EQUIPMENT #	PURCHASE ORDER NO.	TERMS	DUE DATE
1970-02746	301		Net 30 DAYS	12/07/2008
For Service Dates: 11/04/2008 to 11/04/2008				
1970-02746				
1970-19059	Cement-New Well Casing	11/4/08		
Pump Charge-Hourly			1.00 Hour	2520.000 2,520.00
Depth Charge; 4001'-5000'			1.00 EA	250.000 250.00
Cementing Head w/Manifold			1.00 EA	215.000 215.00
Plug Container Utilization Charge			1.00 EA	250.000 250.00
Cement Float Equipment			1.00 EA	105.000 105.00
Flapper Type Insert Float Valves			1.00 EA	105.000 105.00
Cement Float Equipment			1.00 EA	110.000 110.00
Guide Shoe-Regular			5.00 EA	110.000 550.00
Cement Float Equipment			1.00 EA	110.000 110.00
Top Rubber Cement Plug			5.00 EA	110.000 550.00
Cement Float Equipment			1.00 EA	110.000 110.00
Turbolizer			5.00 EA	110.000 550.00
Mileage			150.00 DH	1.400 210.00
Blending and Mixing Service Charge			70.00 DH	7.000 490.00
Mileage			70.00 DH	7.000 490.00
Heavy Equipment Mileage			245.00 DH	1.600 392.00
Mileage			245.00 DH	1.600 392.00
Proppant and Bulk Delivery Charges			35.00 Hour	4.250 148.75
Pickup			35.00 Hour	4.250 148.75
Unit Mileage Charge(Pickups, Vans, or Cars)			30.00 EA	4.000 120.00 T
Additives			30.00 EA	4.000 120.00 T
De-foamer			95.00 EA	7.500 712.50 T
Additives			95.00 EA	7.500 712.50 T
FLA-322			118.00 EA	5.150 607.70 T
Additives			118.00 EA	5.150 607.70 T
Gas-Blok			625.00 EA	0.670 418.75 T
Additives			625.00 EA	0.670 418.75 T
Gilsonite			601.00 EA	0.500 300.50 T
Additives			601.00 EA	0.500 300.50 T
Salt			1,000.00 EA	1.530 1,530.00 T
Additives			1,000.00 EA	1.530 1,530.00 T
Super Flush II				

KCC
JAN 25 2009
CONFIDENTIAL

RECEIVED
KANSAS CORPORATION COMMISSION
JAN 30 2009
CONSERVATION DIVISION
WICHITA, KS

BASIC

energy services, L.P.

*Ken
Mey
7037*

FIELD ORDER 19059

Subject to Correction

Date <i>11-4-09</i>	Customer ID	Lease <i>TAYLOR TRACT A</i>	Well # <i>1-20</i>	Legal <i>20-27-17</i>
CHARGE <i>VAL ENERGY</i>		County <i>KIOWA</i>	State <i>KS</i>	Station <i>Pratt, KS.</i>
		Depth <i>4820</i>	Formation	Shoe Joint <i>323</i>
		Casing <i>5 1/2</i>	Casing Depth <i>2724</i>	TD <i>4820</i>
		Job Type <i>ALL - 5 1/2 L.S.</i>	Customer Representative <i>RUSSELL MYERS</i>	Treater <i>BOBBY DRAKE</i>
AFE Number		PO Number	Materials Received by <i>X KMY</i>	<i>DIS</i>

Station Code	Product Code	QUANTITY	MATERIALS, EQUIPMENT, and SERVICES USED	UNIT PRICE	AMOUNT
P	CP 105	125 SK	AA 2 CEMENT	/	2,125.00
P	CP 103	25 SK	600/40 PCZ	/	300.00
P	CC 105	30 LB	DE-FUMER	/	120.00
P	CC 111	600 LB	SALT	/	300.50
P	CC 115	115 LB	GAS-BLOCK	/	607.70
P	CC 129	75 LB	FLA-322	/	712.50
P	CC 201	625 LB	GILSONITE	KCC /	418.75
JAN 29 2009					
P	CC 155	1000 gal.	SUPERFLUSH II	CONFIDENTIAL /	1,530.00
P	CF 103	1EA	TLD RUBBER PLUG	/	105.00
P	CF 251	1EA	REGULAR GUIDE SHOE	/	250.00
P	CF 1451	1EA	FLAPPER TYPE INSERT	/	215.00
P	CF 1651	5EA	TURBOLIZER	/	550.00
P	F 101	70 MI	HEAVY EQUIPMENT MILEAGE		490.00
P	F 115	245 TM	BULK DELIVERY CHARGES		397.00
P	F 100	35 MI	PICKUP MILEAGE		148.75
P	CF 240	150 SK	ADVISING SERVICE CHARGE		210.00
P	S 003	1EA	SERVICE SUPERVISOR		175.00
P	CE 205	1-4 HRS.	DEPTH CHARGE		2,520.00
P	CE 504	1 JOB	PLUG CONTAINER UTILIZATION		250.00
RECEIVED					
KANSAS CORPORATION COMMISSION					
JAN 30 2009					
CONSERVATION DIVISION					
WICHITA, KS					
<i>DISCOUNTED PRICES -</i>					#8793 55

*Ken
1/2/08/09*

Customer <i>VHL ENERGY</i>	Lease No.	Date <i>11-4-08</i>
Lease <i>TRINIDAD TRACT FARMS</i>	Well # <i>1-20</i>	
Field Order # <i>19059</i>	Station <i>PRATT</i>	Casing <i>5 1/2</i>
Type Job <i>(206)-L.S.</i>	Formation	Depth
		County <i>RIOWA</i>
		State <i>KS</i>
		Legal Description <i>20-27-17</i>

PIPE DATA		PERFORATING DATA		FLUID USED		TREATMENT RESUME		
Casing Size	Tubing Size	Shots/Ft		Acid	RATE	PRESS	ISIP	
<i>5 1/2</i>			<i>Cent.</i>	<i>25% HCl</i>				
Depth <i>4806</i>	Depth	From	To	Pre Pad <i>1.37 1/2</i>	Max		5 Min.	KCC
Volume <i>114.3</i>	Volume	From	To	Pad	Min		10 Min.	JAN 2 2009
Max Press <i>1500</i>	Max Press.	From	To	Frac	Avg		15 Min.	CONFIDENTIAL
Well Connection	Annulus Vol.	From	To		HHP Used		Annulus Pressure	
Plug Depth <i>4167</i>	Packer Depth	From	To	Flush <i>113.5 Bbl.</i>	Gas Volume		Total Load	

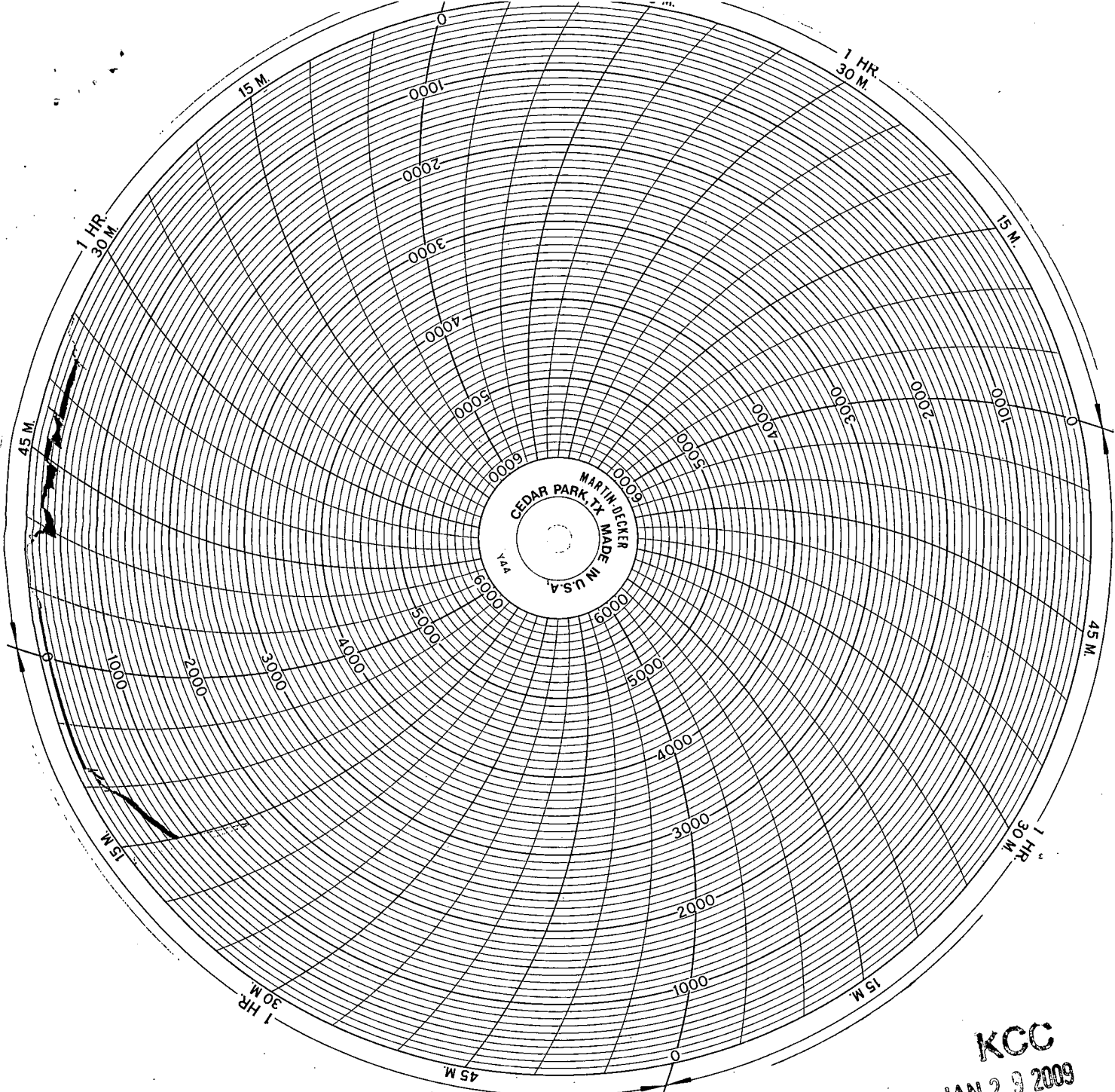
Customer Representative <i>KEVIN WILSON</i>	Station Manager <i>SCOTTY</i>	Treater <i>BOBBY</i>
Service Units <i>19966</i>	<i>19967</i>	<i>19968</i>
Driver Names <i>DANKE</i>	<i>LESLEY</i>	<i>BOBES/AMIRAN</i>

Time	Casing Pressure	Tubing Pressure	Bbls. Pumped	Rate	Service Log
<i>2400</i>					<i>ON LOCATION - SAFETY MEETING</i>
<i>0135</i>					<i>RUN 545. 15.00 PERIT.</i>
<i>0415</i>					<i>LOG ON BOTTOM</i>
<i>0430</i>					<i>HACK UP TO CSB - BREAK CIRC. w/ RIG</i>
<i>0524</i>	<i>200</i>		<i>24</i>	<i>5.0</i>	<i>SUPERFLUSH IT</i>
<i>0529</i>	<i>200</i>		<i>5</i>	<i>5.0</i>	<i>H2O SPALLER</i>
<i>0533</i>	<i>300</i>		<i>32</i>	<i>5.5</i>	<i>MIX CENT. @ 15.3#/GAL</i>
<i>0543</i>					<i>REMOVE PLUG - CLEAR PUMP + LINES</i>
<i>0545</i>	<i>100</i>			<i>6.5</i>	<i>START DISP.</i>
<i>0600</i>	<i>300</i>		<i>86</i>	<i>6.2</i>	<i>LIFT PRESSURE</i>
<i>0605</i>	<i>1500</i>		<i>113.5</i>		<i>PLUG DOWN</i>
<i>0610</i>			<i>7</i>		<i>PLUG RIT + REMOVE HOLES</i>
					<i>CIRCULATION THRU JOB</i>
					<i>JOB COMPLETE</i>
					<i>THANKS, BOBBY</i>

RECEIVED
KANSAS CORPORATION COMMISSION

JAN 30 2009

CONSERVATION DIVISION
WICHITA, KS



KCC
JAN 26 2009
CONFIDENTIAL

RECEIVED
KANSAS CORPORATION COMMISSION

JAN 30 2009
CONSERVATION DIVISION
WICHITA, KS



24 S. Lincoln Street
 P.O. Box 31
 Russell, KS 67665-2906

Voice: (785) 483-3887
 Fax: (785) 483-5566

INVOICE

Invoice Number: 116762
 Invoice Date: Oct 28, 2008
 Page: 1

RECEIVED

OCT 31 2008

9208

Bill To:
 Val Energy, Inc.
 200 W. Douglas
 STE #520
 Wichita, KS 67202

Customer ID	Well Name# or Customer P.O.	Payment Terms	
Val	Taylor Farms #1-20	Net 30 Days	
Job Location	Camp Location	Service Date	Due Date
KS1	Medicine Lodge	Oct 28, 2008	11/27/08

Quantity	Item	Description	Unit Price	Amount
270.00	MAT	Class A Common	15.45	4,171.50
180.00	MAT	Pozmix	8.00	1,440.00
8.00	MAT	Gel	20.80	166.40
15.00	MAT	Chloride	58.20	873.00
473.00	SER	Handling	2.40	1,135.20
50.00	SER	Mileage 473 sx @ .10 per sk per mi	47.30	2,365.00
1.00	SER	Surface	1,018.00	1,018.00
155.00	SER	Extra Footage	0.85	131.75
50.00	SER	Mileage Pump Truck	7.00	350.00
1.00	SER	Head Rental	113.00	113.00
1.00	EQP	Rubber Plug	113.00	113.00

KCC
 JAN 20 2009
 CONFIDENTIAL

Cement Surface Casing @ 455'

RECEIVED
 KANSAS CORPORATION COMMISSION
 JAN 30 2009
 CONSERVATION DIVISION
 WICHITA KS

ALL PRICES ARE NET, PAYABLE 30 DAYS FOLLOWING DATE OF INVOICE. 1 1/2% CHARGED THEREAFTER. IF ACCOUNT IS CURRENT, TAKE DISCOUNT OF

\$ 11,145.30

ONLY IF PAID ON OR BEFORE

Nov 27, 2008

Subtotal	11,876.85
Sales Tax	426.13
Total Invoice Amount	12,302.98
Payment/Credit Applied	
TOTAL	12,302.98

1157.68

\$ 11,145.30

