

TYPE

NOTICE OF INTENTION TO DRILL

C-1

TO BE FILED WITH THE STATE CORPORATION COMMISSION
PRIOR TO COMMENCEMENT OF WELL

API Number 15-065-20729
(For office use only)

1. Operator DON E. PRATT

Starting Date EST. 12-19-74

Address P. O. BOX 370, HAYS, KANSAS 67601

County GRAHAM

2. Contractor MURFIN DRILLING, COMPANY

Sec 4 Twp 10 S Rge 24 ^EW

Address WICHITA, KANSAS

Spot Location NE NW SW

3. Type of Equipment: Rotary X Cable Tool _____

Nearest Lease Line 990 ft.

4. Well to be Drilled for: Oil X Gas _____

Lease Name GEO NICKELSON B

Disposal _____ Input _____ Other _____

Well No. 2

5. Depth of Deepest Fresh Water within 1 mile 90 ft.

Est. Total Depth 4150 ft.

6. Depth of Municipal Water Well within 3 miles none ft.

7. Depth to Protect all Fresh Water 150 ft.

8. Amount of Surface Casing to be set 150 ft.

9. Alternate No. 1 _____ No. 2 X _____

REMARKS:

OPERATOR STATES THAT HE WILL COMPLY WITH K. S. A. 55-128

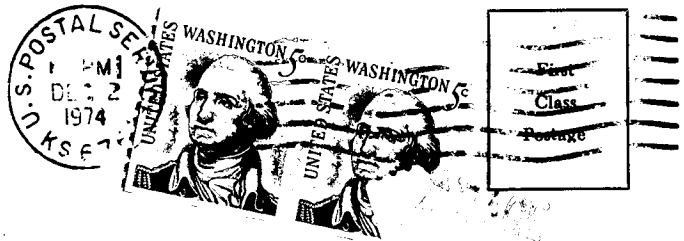
Signature of Operator _____



RECEIVED
STATE CORPORATION COMMISSION

12-13-1974
DEC 13 1974

CONSERVATION DIVISION
Wichita, Kansas



State Corporation Commission of Kansas
Conservation Division
P. O. Box 17027
Wichita, Kansas 67217

(IF PREFERRED, MAIL IN ENVELOPE)