

KANSAS CORPORATION COMMISSION  
OIL & GAS CONSERVATION DIVISION  
**WELL PLUGGING APPLICATION**  
Please TYPE Form and File ONE Copy

Form CP-1  
March 2009  
This Form must be Typed  
Form must be Signed  
All blanks must be Filled

OPERATOR: License #: 30481  
Name: Apollo Energies, Inc  
Address 1: 10378 N 281 Hwy  
Address 2: \_\_\_\_\_  
City: Pratt State: KS Zip: 6124 + \_\_\_\_\_  
Contact Person: Jim Byers  
Phone: (620) 672-9001

API No. 15 - 151-22-125-0000  
If pre 1967, supply original completion date: \_\_\_\_\_  
Spot Description: \_\_\_\_\_  
NW-SE-NW Sec. 8 Twp. 27 S. R. 11  East  West  
3,630 Feet from  North /  South Line of Section  
3,540 Feet from  East /  West Line of Section  
Footages Calculated from Nearest Outside Section Corner:  
 NE  NW  SE  SW  
County: Pratt  
Lease Name: Holland Well #: C-2

Check One:  Oil Well  Gas Well  OG  D&A  Cathodic  Water Supply Well  Other: \_\_\_\_\_  
 SWD Permit #: \_\_\_\_\_  ENHR Permit #: \_\_\_\_\_  Gas Storage Permit #: \_\_\_\_\_  
Conductor Casing Size: \_\_\_\_\_ Set at: \_\_\_\_\_ Cemented with: \_\_\_\_\_ Sacks  
Surface Casing Size: 8 5/8 Set at: 235 Cemented with: 300 Sacks  
Production Casing Size: 4 1/2 Set at: 4015 Cemented with: 125 Sacks

List (ALL) Perforations and Bridge Plug Sets:

Elevation: 1823 ( G.L. /  K.B.) T.D.: 4021 P.B.T.D.: \_\_\_\_\_ Anhydrite Depth: \_\_\_\_\_  
(Stone Corral Formation)

Condition of Well:  Good  Poor  Junk In Hole  Casing Leak at: \_\_\_\_\_  
(Interval)

Proposed Method of Plugging (attach a separate page if additional space is needed):

As Per KCC instructions

Is Well Log attached to this application?  Yes  No Is ACO-1 filed?  Yes  No

If ACO-1 not filed, explain why:

None in file, KCC, or KGS

Plugging of this Well will be done in accordance with K.S.A. 55-101 et. seq. and the Rules and Regulations of the State Corporation Commission

Company Representative authorized to supervise plugging operations: Jim Byers or Kevin Fischer  
Address: 10378 N. 281 Hwy City: Pratt State: KS Zip: 67124 + \_\_\_\_\_  
Phone: (620) 672-9001  
Plugging Contractor License #: 30481 Name: Apollo Energies, Inc  
Address 1: 10378 N. 281 Hwy Address 2: \_\_\_\_\_  
City: Pratt State: KS Zip: 6712 + \_\_\_\_\_  
Phone: (620) 672-9001

Proposed Date of Plugging (if known): ASAP

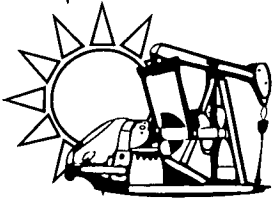
Payment of the Plugging Fee (K.A.R. 82-3-118) will be guaranteed by Operator or Agent

Date: 2-11-10 Authorized Operator / Agent: \_\_\_\_\_  
(Signature)

Mail to: KCC - Conservation Division, 130 S. Market - Room 2078, Wichita, Kansas 67202

RECEIVED  
FEB 12 2010

KCC WICHITA  
2/16/10



# APOLLO ENERGIES, INC.

James L. Byers, President

February 11, 2010

KCC  
Conservation Division  
130 S. Market – Room 2078  
Wichita, KS 67202

*API: 15-151-22125-0000*

To Whom It May Concern:

Attached you will find a CP-1 for the Holland C-2. We had filed a SWD application and were moving forward with making the well a disposal well. It is my understanding that the squeeze job that we preformed was unsuccessful. We are moving forward with plugging the well. The application has all the information I could find about the well. If questions should arise please feel free to contact me.

*KCC  
2/12/10*

Thank you,

Kevin Fischer  
Production Technician

RECEIVED  
FEB 12 2010  
KCC WICHITA

replacement card

8-27S-11W  
90'E, C NW SE NW

A & A DISCOVERY  
HILL CITY KS 67642

# C-2 HOLLAND

API 15-151-22125

site: 2-3/4 S OF PRESTON KS  
contr: DUKE DRILLING # 1

co: PRATT  
field: HAYNESVILLE SW

	+		

geol:  
fr date 07/01/94

spd date 07/06/94

drig comp 07/14/94

card issued 11/07/94

last revised 07/26/99

ELV: 1815 EGL

tops.....depth/datum  
RTD.....4021 -2206  
NO TOPS RPTD

**IP status**

D& A, PENN , 10/01/94  
INFO RELEASED: 7/26/99 - WAS TEMP ABD  
CSG: 8-5/8" 235 / 300 SX (ALT 1), 4-1/2" 4015 / 125 SX  
NO CORES OR DSTS  
TRGT ZN: KC, PTD 4000 (PENN), MICT - CO, PF (LKC)  
INTV NA, SWB DWN, SO, NON-COMMERCIAL, TEMP  
ABD 10/1/94 - NO FURTHER COMPLETION RPTD;  
CHGD STATUS P & A (DATE NA); NO OTHER INFO  
RELEASED BY OPERATOR OR ON KCC RECORDS (NO  
ACO); ALL REQUESTS FOR INFO DENIED

RECEIVED  
FEB 12 2010  
KCC WICHITA

*Marked  
Dana*

WT

WIRE-TECH

## GAMMA RAY BOND LOG

COMPANY A & A DISCOVERY

WELL C-2 HOLLAND

FIELD \_\_\_\_\_

COUNTY PRATT STATE KANSAS

Location NW-SE-NW Other Services: \_\_\_\_\_  
3630' FSL  
3540' FEL

Sec. 8 Twp 27S Rge 11W

Permanent Datum GROUND LEVEL Elev. 1815' Elev.: K.B. 1823'

Log Measured From K.B. 8 Ft. Above Perm. Datum D.F. \_\_\_\_\_

Drilling Measured From KELLY DUSHING G.L. 1815'

Date	<u>7-21-94</u>		
Run No.	<u>ONE</u>		
Depth—Driller			
Depth—Wire-Tech	<u>3955'</u>		
Btm. Log Inter.	<u>3954'</u>		
Top Log Inter.	<u>3400'</u>		
Type Fluid in Hole	<u>WATER</u>		
Fluid Level	<u>FULL</u>		
Date Cemented			
Type of Cement			
Log Top of Cement	<u>3600'</u>		
Max. Rec. Temp.	<u>°F @</u>		
Equip.   Location	<u>52   GREAT BEND, KANSAS</u>		
Recorded By	<u>BRENT CURTIS</u>		
Witnessed By			

RUN NO.	BORE-HOLE RECORD				CASING RECORD		
	BIT	FROM	TO	SIZE	WEIGHT	FROM	TO
	<u>121/4</u>	<u>0</u>	<u>780'</u>	<u>103/4</u>		<u>0'</u>	<u>232'</u>
	<u>7 7/8</u>	<u>780</u>	<u>4020'</u>	<u>85/8</u>		<u>0</u>	<u>780</u>
				<u>41/2</u>		<u>U</u>	<u>NA</u>

BOND DATA

	NO BOND	
<input type="checkbox"/>	<input checked="" type="checkbox"/>	<input type="checkbox"/>
	INTERMEDIATE BOND	GOOD BOND

GAMMA RAY DATA

API G.R. Units per Log Div.	10
Zero Div. L or R	1 L
Sens. Settings	100
T.C. Sec.	2
Speed F/Min	25
Depths To	3400'
From	0
Run No.	ONE

GAMMA RAY DATA

G/R-2	B-1
-------	-----

GAMMA RAY DATA

G/R-2	B-1
-------	-----

GAMMA RAY DATA

G/R-2	B-1
-------	-----

GAMMA RAY DATA

G/R-2	B-1
-------	-----

GAMMA RAY DATA

G/R-2	B-1
-------	-----

GAMMA RAY DATA

G/R-2	B-1
-------	-----

GAMMA RAY DATA

G/R-2	B-1
-------	-----

GAMMA RAY DATA

G/R-2	B-1
-------	-----

GAMMA RAY DATA

G/R-2	B-1
-------	-----

GAMMA RAY DATA

G/R-2	B-1
-------	-----

GAMMA RAY DATA

G/R-2	B-1
-------	-----

GAMMA RAY DATA

G/R-2	B-1
-------	-----

GAMMA RAY DATA

G/R-2	B-1
-------	-----

GAMMA RAY DATA

G/R-2	B-1
-------	-----

GAMMA RAY DATA

G/R-2	B-1
-------	-----

GAMMA RAY DATA

G/R-2	B-1
-------	-----

GAMMA RAY DATA

G/R-2	B-1
-------	-----

GAMMA RAY DATA

G/R-2	B-1
-------	-----

GAMMA RAY DATA

G/R-2	B-1
-------	-----

GAMMA RAY DATA

G/R-2	B-1
-------	-----

GAMMA RAY DATA

G/R-2	B-1
-------	-----

GAMMA RAY DATA

G/R-2	B-1
-------	-----

GAMMA RAY DATA

G/R-2	B-1
-------	-----

GAMMA RAY DATA

G/R-2	B-1
-------	-----

GAMMA RAY DATA

G/R-2	B-1
-------	-----

GAMMA RAY DATA

G/R-2	B-1
-------	-----

GAMMA RAY DATA

G/R-2	B-1
-------	-----

GAMMA RAY DATA

G/R-2	B-1
-------	-----

GAMMA RAY DATA

G/R-2	B-1
-------	-----

GAMMA RAY DATA

G/R-2	B-1
-------	-----

GAMMA RAY DATA

G/R-2	B-1
-------	-----

GAMMA RAY DATA

G/R-2	B-1
-------	-----

GAMMA RAY DATA

G/R-2	B-1
-------	-----

GAMMA RAY DATA

G/R-2	B-1
-------	-----

GAMMA RAY DATA

G/R-2	B-1
-------	-----

GAMMA RAY DATA

G/R-2	B-1
-------	-----

GAMMA RAY DATA

G/R-2	B-1
-------	-----

GAMMA RAY DATA

G/R-2	B-1
-------	-----

GAMMA RAY DATA

G/R-2	B-1
-------	-----

GAMMA RAY DATA

G/R-2	B-1
-------	-----

GAMMA RAY DATA

G/R-2	B-1
-------	-----

GAMMA RAY DATA

G/R-2	B-1
-------	-----

GAMMA RAY DATA

G/R-2	B-1
-------	-----

GAMMA RAY DATA

G/R-2	B-1
-------	-----

GAMMA RAY DATA

G/R-2	B-1
-------	-----

GAMMA RAY DATA

G/R-2	B-1
-------	-----

GAMMA RAY DATA

G/R-2	B-1
-------	-----

GAMMA RAY DATA

G/R-2	B-1
-------	-----

GAMMA RAY DATA

G/R-2	B-1
-------	-----

GAMMA RAY DATA

G/R-2	B-1
-------	-----

GAMMA RAY DATA

G/R-2	B-1
-------	-----

GAMMA RAY DATA

G/R-2	B-1
-------	-----

GAMMA RAY DATA

G/R-2	B-1
-------	-----

GAMMA RAY DATA

G/R-2	B-1
-------	-----

GAMMA RAY DATA

G/R-2	B-1
-------	-----

GAMMA RAY DATA

G/R-2	B-1
-------	-----

GAMMA RAY DATA

G/R-2	B-1
-------	-----

GAMMA RAY DATA

G/R-2	B-1
-------	-----

GAMMA RAY DATA

G/R-2	B-1
-------	-----

GAMMA RAY DATA

G/R-2	B-1
-------	-----

GAMMA RAY DATA

G/R-2	B-1
-------	-----

GAMMA RAY DATA

G/R-2	B-1
-------	-----

GAMMA RAY DATA

G/R-2	B-1
-------	-----

GAMMA RAY DATA

G/R-2	B-1
-------	-----

GAMMA RAY DATA

G/R-2	B-1
-------	-----

GAMMA RAY DATA

G/R-2	B-1
-------	-----

GAMMA RAY DATA

G/R-2	B-1
-------	-----

GAMMA RAY DATA

G/R-2	B-1
-------	-----

GAMMA RAY DATA

G/R-2	B-1
-------	-----

GAMMA RAY DATA

G/R-2	B-1
-------	-----

GAMMA RAY DATA

G/R-2	B-1
-------	-----

GAMMA RAY DATA

G/R-2	B-1
-------	-----

GAMMA RAY DATA

G/R-2	B-1
-------	-----

GAMMA RAY DATA

G/R-2	B-1
-------	-----

GAMMA RAY DATA

G/R-2	B-1
-------	-----

GAMMA RAY DATA

G/R-2	B-1
-------	-----

GAMMA RAY DATA

G/R-2	B-1
-------	-----

GAMMA RAY DATA

G/R-2	B-1
-------	-----

GAMMA RAY DATA

G/R-2	B-1
-------	-----

GAMMA RAY DATA

G/R-2	B-1
-------	-----

GAMMA RAY DATA

G/R-2	B-1
-------	-----

GAMMA RAY DATA

G/R-2	B-1
-------	-----

GAMMA RAY DATA

G/R-2	B-1
-------	-----

GAMMA RAY DATA

G/R-2	B-1
-------	-----

GAMMA RAY DATA

G/R-2	B-1
-------	-----

GAMMA RAY DATA

G/R-2	B-1
-------	-----

GAMMA RAY DATA

G/R-2	B-1
-------	-----

GAMMA RAY DATA

G/R-2	B-1
-------	-----

GAMMA RAY DATA

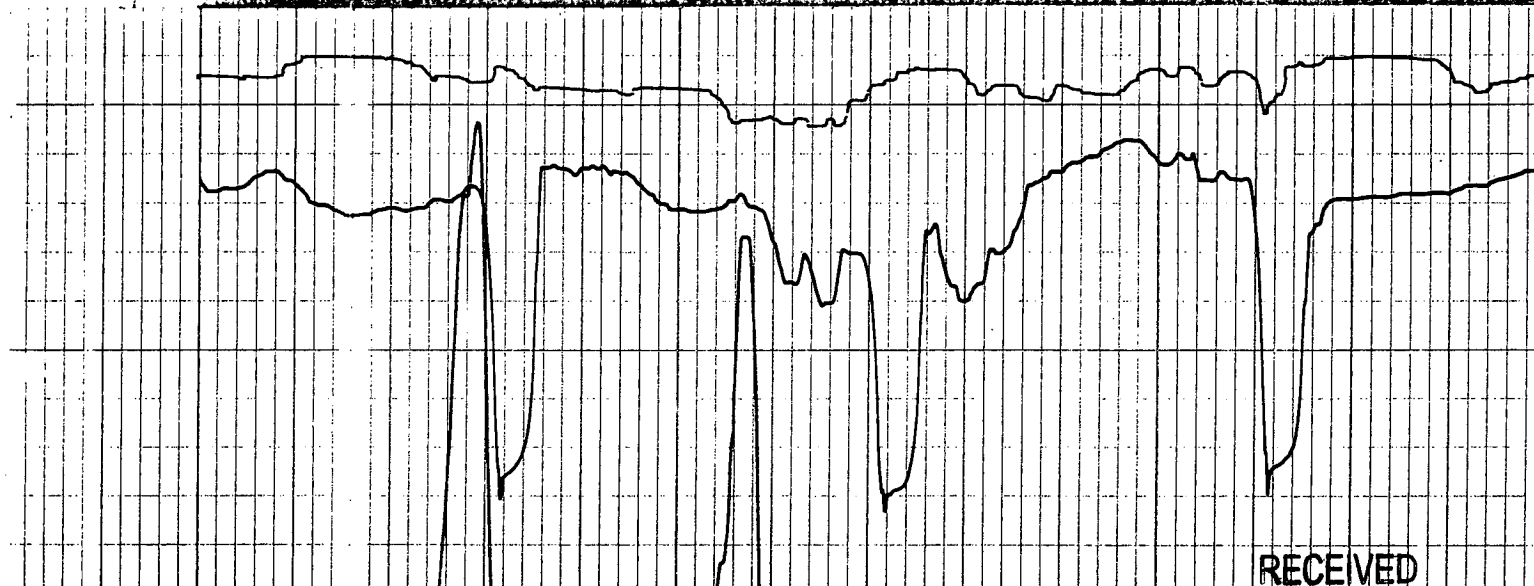
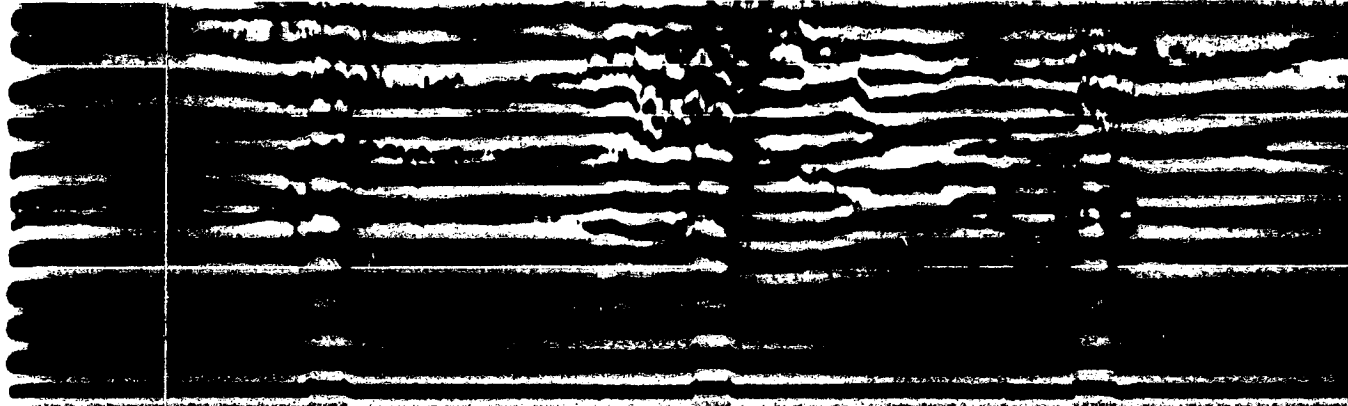
G/R-2	B-1
-------	-----

GAMMA RAY DATA

G/R-2	B-1
-------	-----

GAMMA RAY DATA

G/R-2	B-1
-------	-----



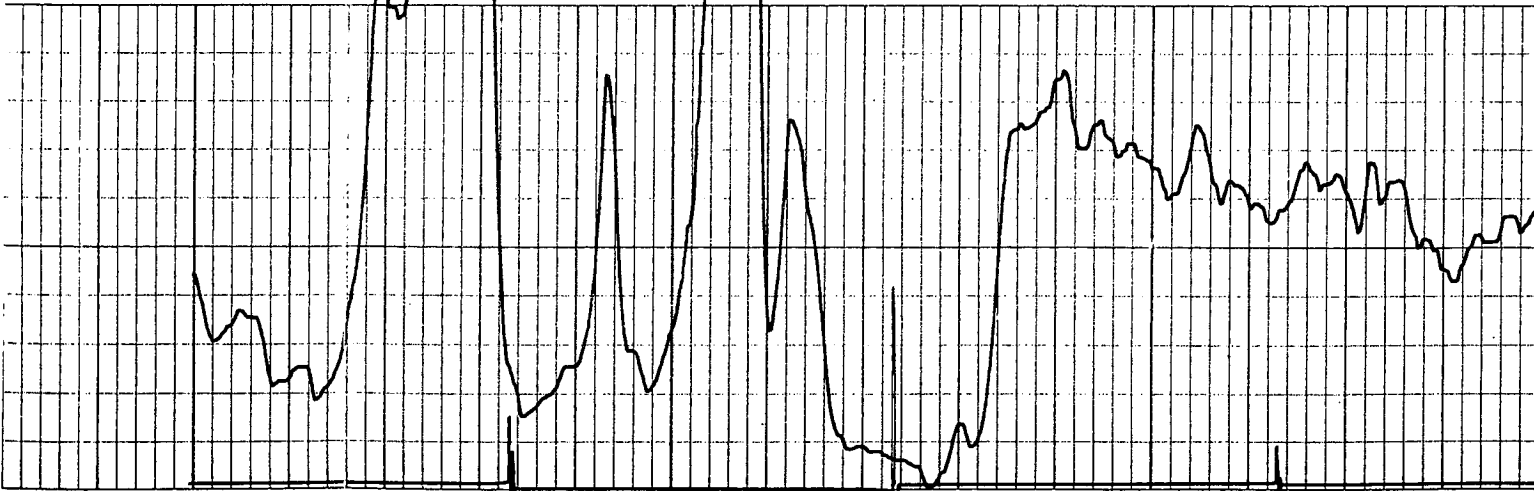
3400

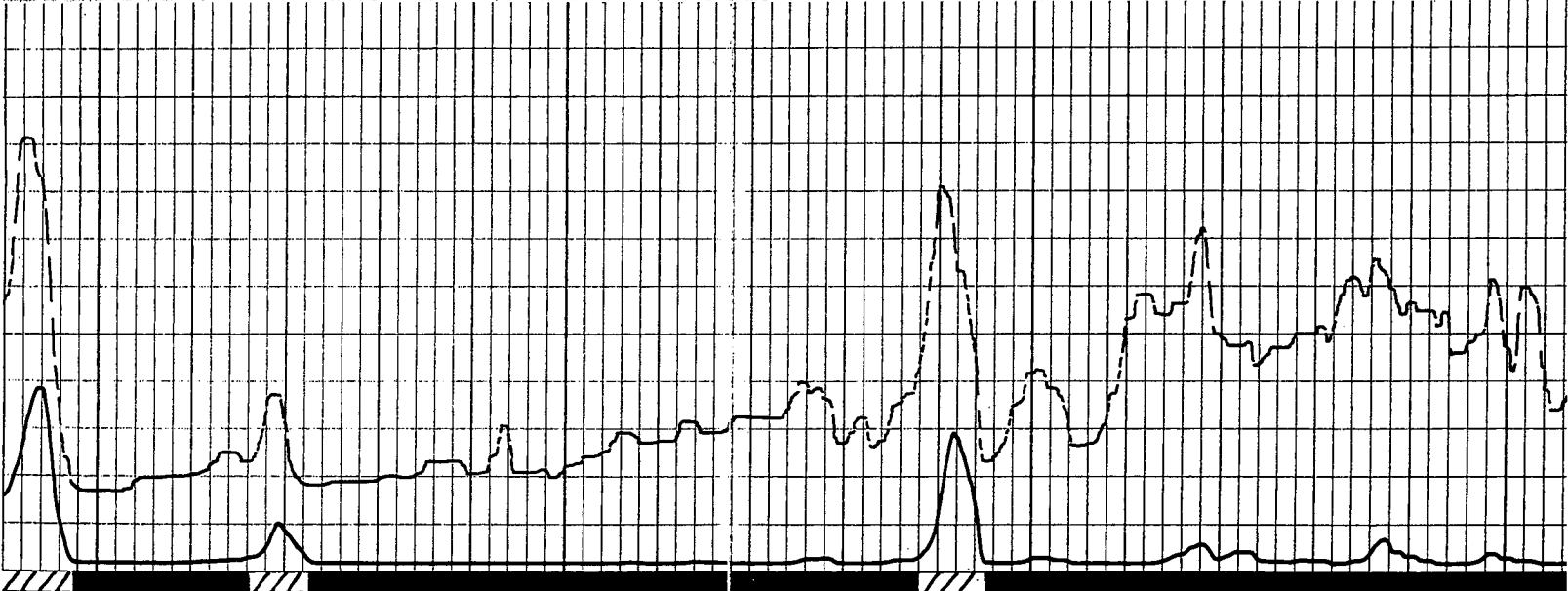
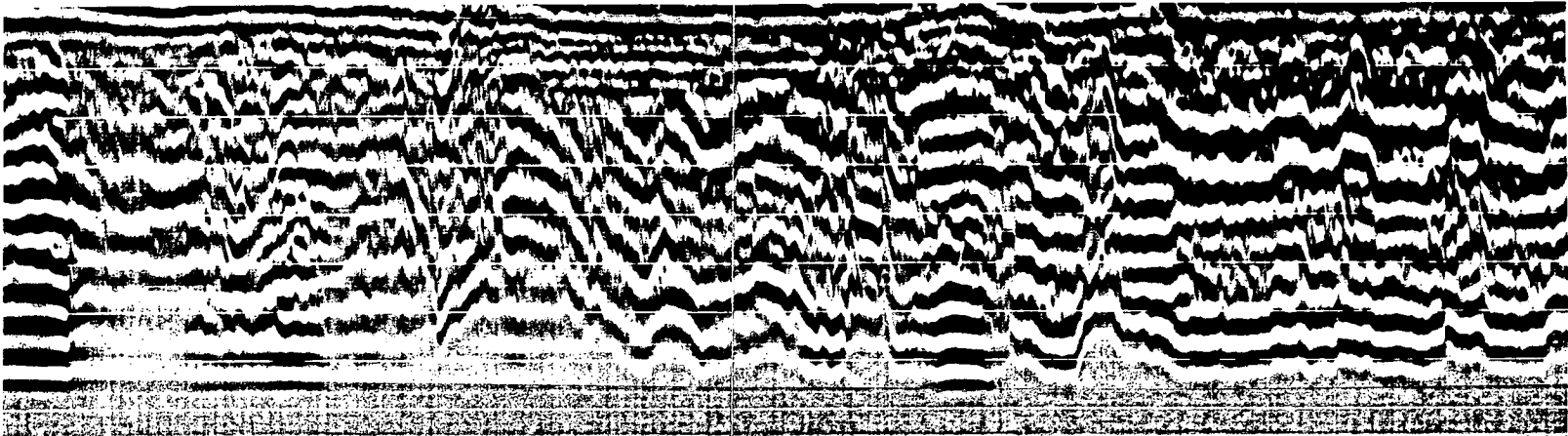
3500

RECEIVED

FEB 12 2010

KCC WICHITA





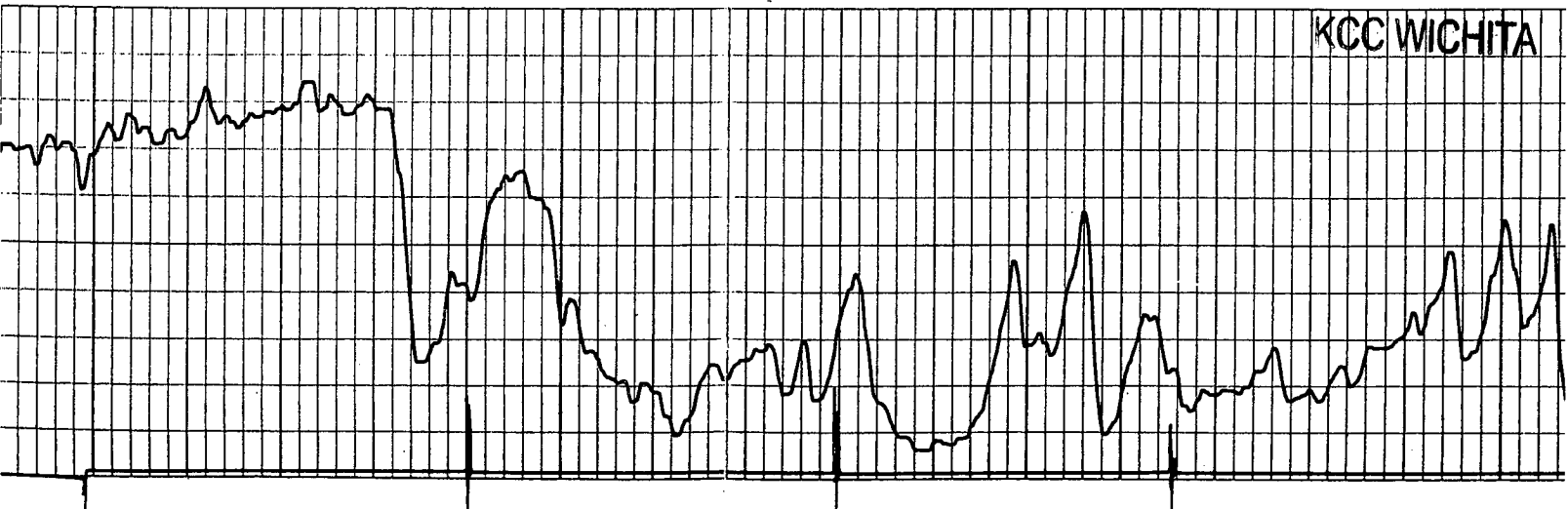
3600

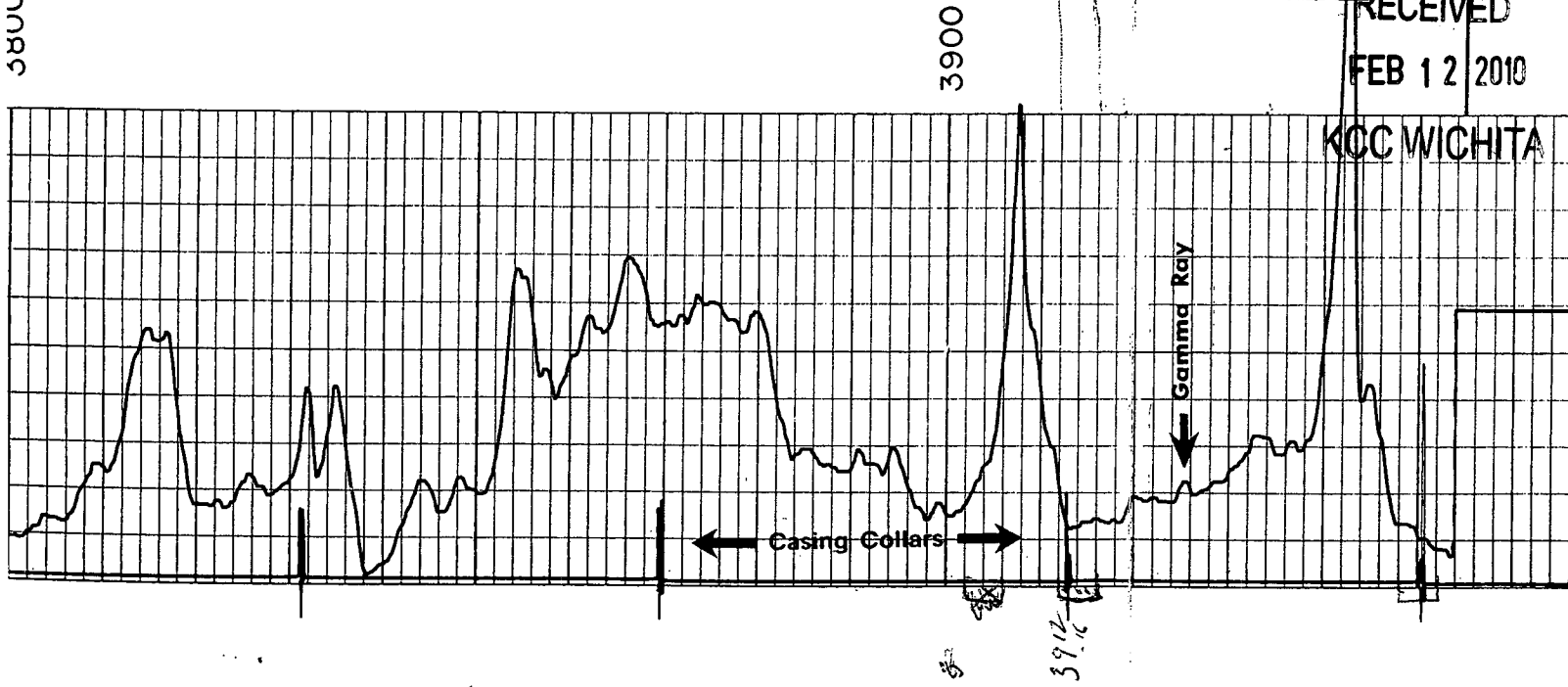
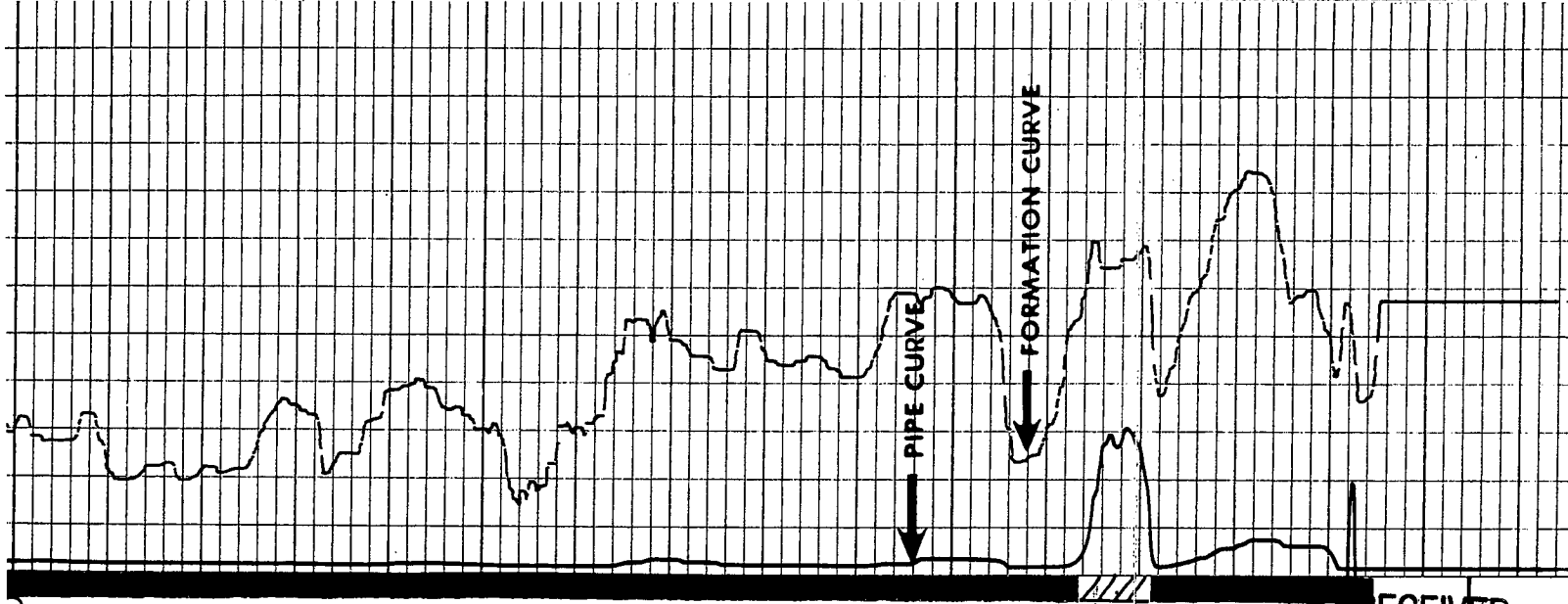
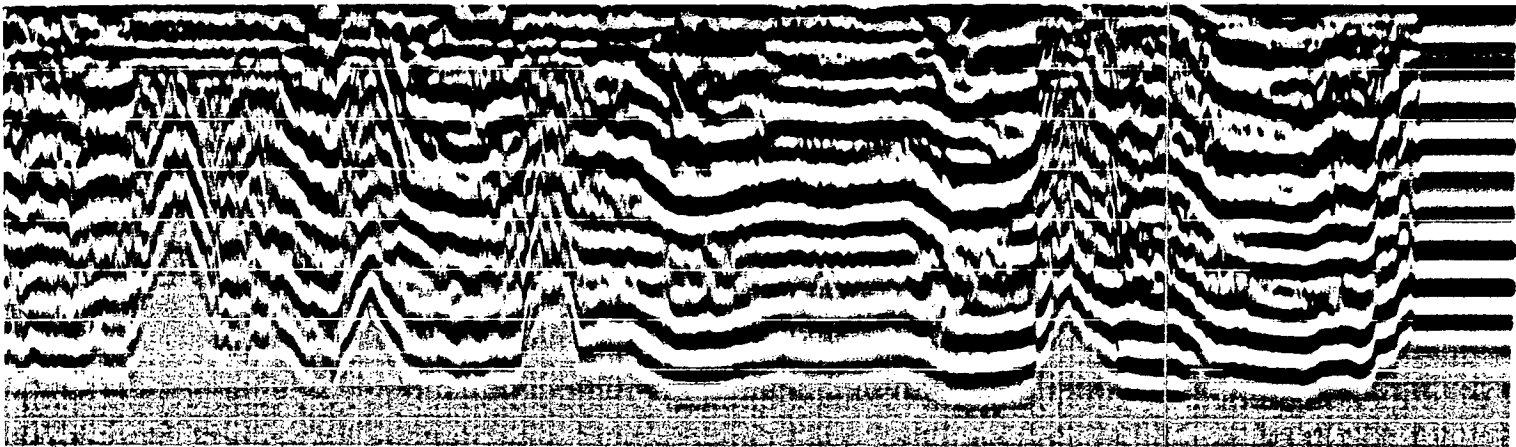
3700

RECEIVED

FEB 12 2010

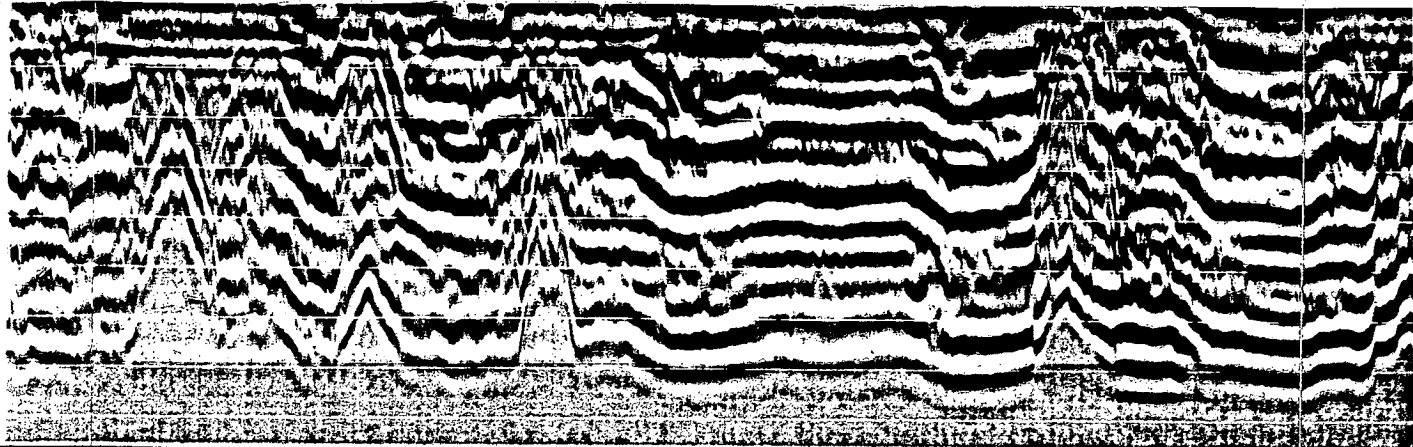
KCC WICHITA



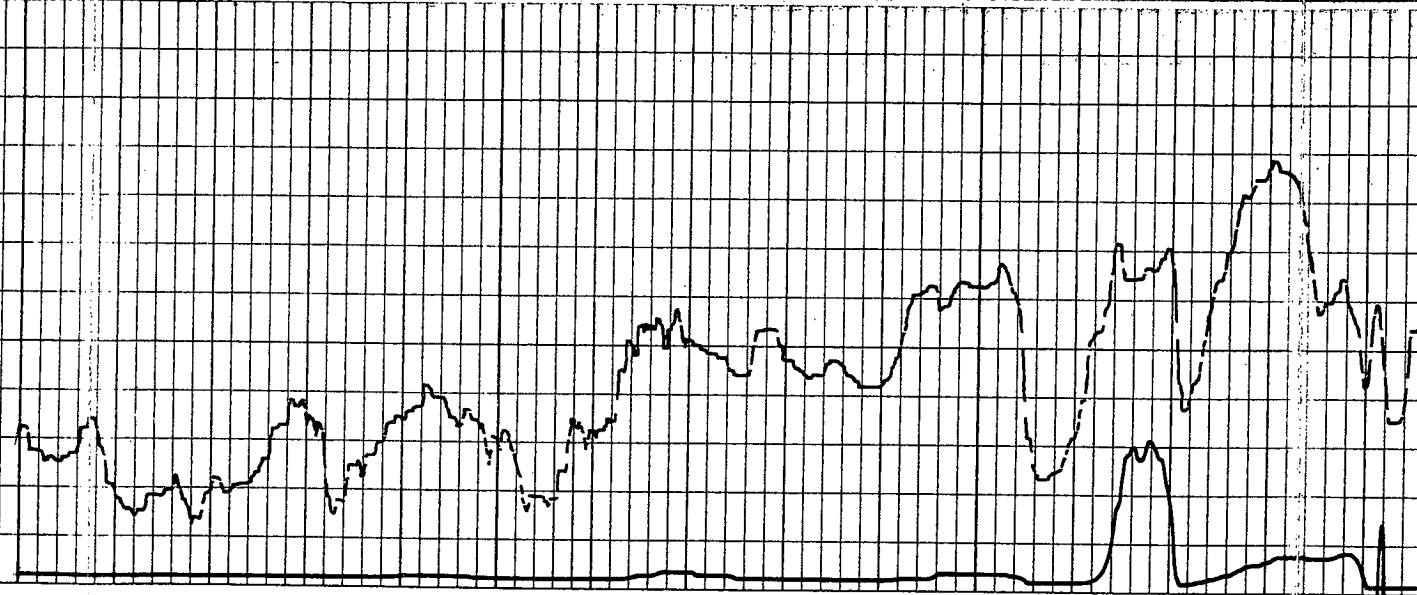


RECEIVED  
FEB 12 2010

KCC WICHITA



REPEAT SECTION



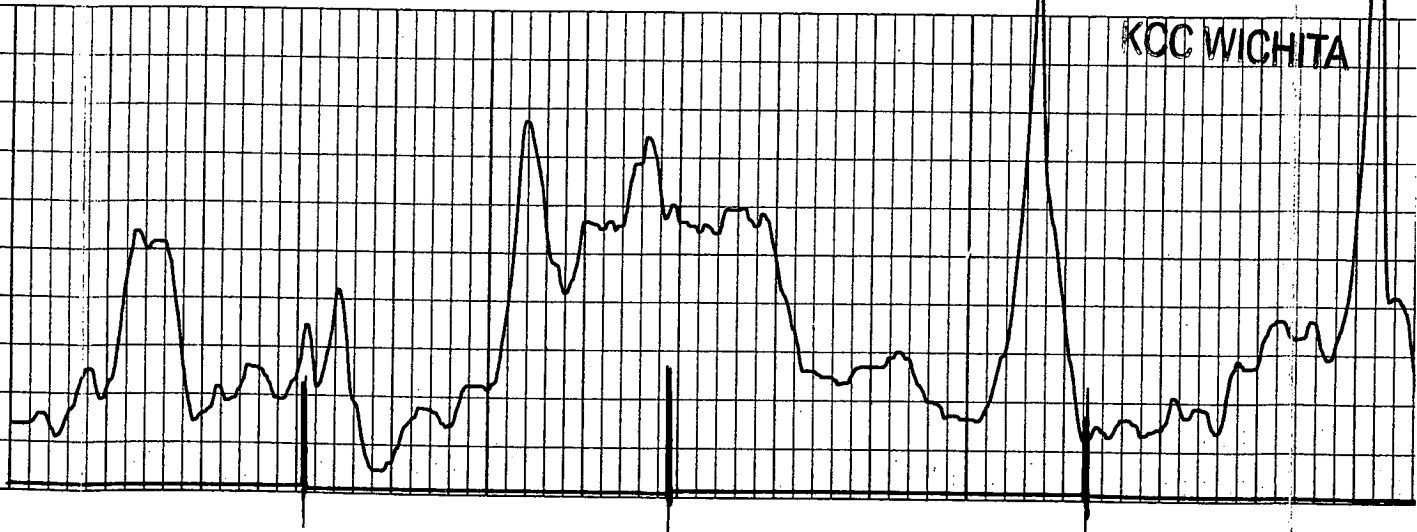
3800

REPEAT SECTION

3900

RECEIVED  
FEB 12 2010

KCC WICHITA







Mark Parkinson, Governor Thomas E. Wright, Chairman Joseph F. Harkins, Commissioner

## NOTICE OF RECEIPT OF WELL PLUGGING APPLICATION (CP-1)

• APOLLO ENERGIES, INC.  
10378 N 281 HWY  
PRATT, KS 67124-7920

February 16, 2010

Re: HOLLAND #C-2  
API 15-151-22125-00-00  
8-27S-11W, 3630 FSL 3540 FEL  
PRATT COUNTY, KANSAS

Dear Operator:

The purpose of this letter is twofold. First, this letter is to notify you that the Conservation Division has received your plugging proposal, form CP-1, for the above well and has reviewed the proposal for completeness. The central office will now forward your CP-1 to the district office listed below for review of the proposed plugging method. **Please contact the district office for approval of your proposed plugging method at least five (5) days before plugging the well, pursuant to K.A.R. 82-3-113(b). If a workover pit will be used during the plugging of the well it must be permitted. A CDP-1 form must be filed and approved prior to the use of the pit in accordance with K.A.R. 82-3-600.**

This letter is also to notify you that during the central office's review of your CP-1 for license number verification, staff has discovered that you are not the current operator of record of the above well on file with the Conservation Division. **Central office staff is therefore requesting that you verify that you are the operator of record of the above well. The proper procedure for verifying operator authority is by filing a Conservation Division form T-1 (Request for Change of Operator; Transfer of Injection or Surface Pit Permit).** If a T-1 has already been filed with the Conservation Division reflecting the transfer of operator authority, please disregard this paragraph. If a T-1 has not been filed reflecting the transfer, please see the attached letter, which explains the T-1 filing process.

The Conservation Division's review of form CP-1, either in the central or district office, does not include an inquiry into well ownership or the filing operator's legal right to plug the well. Furthermore, this notice in no way constitutes authorization to plug the above well by persons not having legal rights of ownership or interest in the well.

**This notice is void after August 15, 2010. The CP-1 filing does not bring the above well into compliance with K.A.R. 82-3-111 with regard to the Commission's temporary abandonment requirements.**

Sincerely,

Steve Bond

Production Department Supervisor

District: #1  
210 E Frontview, Suite A  
Dodge City, KS 67801  
(620) 225-8888