

CONFIDENTIAL

WELL COMPLETION FORM
WELL HISTORY - DESCRIPTION OF WELL & LEASE

ORIGINAL 3/27/10

Operator: License # 5278

Name: EOG Resources, Inc.

Address 3817 NW Expressway, Suite 500

City/State/Zip Oklahoma City, Oklahoma 73112

Purchaser: _____

Operator Contact Person: MELISSA STURM

Phone (405) 246-3234

Contractor: Name: KENAI MID-CONTINENT

License: 34000

Wellsite Geologist: KCC

Designate Type of Completion

New Well Re-Entry Workover

Oil SWD SLOW Temp. Abd.

Gas ENHR SIGW

Dry Other (Core, WSW, Expl., Cathodic, etc.)

If Workover/Reentry: Old Well Info as follows:

Operator: _____

Well Name: _____

Original Comp. Date _____ Original Total Depth _____

Deepening Re-perf. Conv. to Enhr./SWD

Plug Back _____ Plug Back Total Depth _____

Commingled _____ Docket No. _____

Dual Completion _____ Docket No. _____

Other (SWD or Enhr?) _____ Docket No. _____

11/30/07 1/19/08

Spud Date or _____ Date Reached TD _____ Completion Date or _____
Recompletion Date _____ Recompletion Date _____

API NO. 15- 189-22629-01-00

County STEVENS

NE - NE - SW Sec. 27 Twp. 32 S. R. 36 E W

2400 Feet from S (circle one) Line of Section

2465 Feet from E/W (circle one) Line of Section

Footages Calculated from Nearest Outside Section Corner:

(circle one) NE SE NW SW

Lease Name S & S Well # 27 #1H

Field Name _____

Producing Formation _____

Elevation: Ground 3056' Kelley Bushing 3067'

Total Depth 9142' Plug Back Total Depth _____

Amount of Surface Pipe Set and Cemented at 1460' Feet

Multiple Stage Cementing Collar Used? Yes No

If yes, show depth set _____ Feet

If Alternate II completion, cement circulated from _____

feet depth to _____ w/ _____ sx cmt.

Drilling Fluid Management Plan AT INS 16-09
(Data must be collected from the Reserve Pit)

Chloride content 4000 ppm Fluid volume 1000 bbls

Dewatering method used EVAPORATION

Location of fluid disposal if hauled offsite: _____

Operator Name _____

Lease Name _____ License No. _____

Quarter _____ Sec. _____ Twp. _____ S. R. _____ E W

County _____ Docket No. _____

INSTRUCTIONS: An original and two copies of this form shall be filed with the Kansas Corporation Commission, 130 S. Market - Room 2078, Wichita, Kansas 67202, within 120 days of the spud date, recompletion, workover or conversion of a well. Rule 82-3-130, 82-3-106 and 82-3-107 apply. Information on side two of this form will be held confidential for a period of 12 months if requested in writing and submitted with the form (see rule 82-3-107 for confidentiality in excess of 12 months). One copy of all wireline logs and geologist well report shall be attached with this form. ALL CEMENTING TICKETS MUST BE ATTACHED. Submit CP-4 form with all plugged wells. Submit CP-111 form with all temporarily abandoned wells.

All requirements of the statutes, rules and regulations promulgated to regulate the oil and gas industry have been fully complied with and the statements herein are complete and correct to the best of my knowledge.

Signature Melissa Sturm

Title SR. OPERATIONS ASSISTANT Date 3/26/08

Subscribed and sworn to before me this 26TH day of MARCH

20 08

Notary Public Kaye Dawn Rockel

Date Commission Expires Commission # 04009575 Expires 10/21/08

KCC Office Use ONLY

RECEIVED
KANSAS CORPORATION COMMISSION
 Letter of Confidentiality Attached
If Denied, Yes Date: MAR 28 2008
 Wireline Log Received
 Geologist Report Received
 UIC Distribution
CONSERVATION DIVISION
WICHITA, KS

Operator Name EOG RESOURCES, INC.

Lease Name S & S Well # 27-#1H

Sec. 27 Twp. 32 S.R. 36 East West

County STEVENS

INSTRUCTIONS: Show important tops and base of formations penetrated. Detail all cores. Report all drill stem tests giving interval tested, time tool open and closed, flowing and shut-in pressures, whether shut-in pressure reached static level, hydrostatic pressures, bottom hole temperature, fluid recovery, and flow rates if gas to surface during test. Attach extra sheet if more space is needed. Attach copy of all Electric Wireline Logs surveyed. Attach final geological well site report.

Drill Stem Tests Taken (Attach Additional Sheets.) Yes No

Samples Sent to Geological Survey Yes No

Cores Taken Yes No

Electric Log Run (Submit Copy.) Yes No

List All E.Logs Run:
NONE

Log Formation (Top), Depth and Datums Sample

Name Top Datum

SEE ATTACHED SHEET

CASING RECORD New Used

Report all strings set-conductor, surface, intermediate, production, etc.

Purpose of String	Size Hole Drilled	Size Casing Set (In O.D.)	Weight Lbs./Ft.	Setting Depth	Type of Cement	# Sacks Used	Type and Percent Additives
SURFACE	12 1/4"	9 5/8"	36#	1460'	MIDCON2-PP	300	SEE CMT TIX
					PREM PLUS	180	SEE CMT TIX
PRODUCTION	8 3/4"	4.5"	11.6#	9050'	50/50 POZ	1170	SEE CMT TIX

ADDITIONAL CEMENTING/SQUEEZE RECORD

Purpose <input type="checkbox"/> Perforate <input type="checkbox"/> Protect Casing <input type="checkbox"/> Plug Back TD <input type="checkbox"/> Plug Off Zone	Depth		Type of Cement	#Sacks Used	Type and Percent Additives
	Top	Bottom			

Shots Per Foot	PERFORATION RECORD - Bridge Plugs Set/Type Specify Footage of Each Interval Perforated		Acid, Fracture, Shot, Cement Squeeze Record (Amount and Kind of Material Used)		Depth

TUBING RECORD Size Set At Packer At Liner Run Yes No

Date of First, Resumed Production, SWD or Enhr. WAITING FOR COMPLETION SINCE 1/21/08 Producing Method Flowing Pumping Gas Lift Other (Explain)

Estimated Production Per 24 Hours	Oil Bbls.	Gas Mcf	Water Bbls.	Gas-Oil Ratio	Gravity

Disposition of Gas: Vented Sold Used on Lease Open Hole Perforation Dually Comp. Commingled
 (If vented, submit ACO-18.) Other (Specify) _____

1002 A		
Well Name : S&S 27 #1H		
FORMATION	TOP	DATUM
CHEROKEE	5150	-2082
ATOKA	5520	-2452
MORROW	5594	-2526
LOWER MORROW	5915	-2847

CONFIDENTIAL
MAR 27 2008
KCC

RECEIVED
KANSAS CORPORATION COMMISSION
MAR 28 2008
CONSERVATION DIVISION
WICHITA, KS

HALLIBURTON

Cementing Job Summary

The Road to Excellence Starts with Safety

Sold To #: 348223	Ship To #: 2615927	Quote #:	Sales Order #: 5532712
Customer: EOG RESOURCES INC EBUSINESS		Customer Rep: BROCK, GARY	
Well Name: S & S	Well #: 27-1H	API/UWI #:	
Field:	City (SAP): UNKNOWN	County/Parish: Stevens	State: Kansas
Legal Description: Section 27 Township 32S Range 36W			
Contractor: ABERCROMBIE	Rig/Platform Name/Num: 5		
Job Purpose: Cement Surface Casing			
Well Type: Development Well		Job Type: Cement Surface Casing	
Sales Person: BLAKEY, JOSEPH	Srvc Supervisor: DEETZ, DONALD	MBU ID/Emp #: 389855	

CONFIDENTIAL
MAR 27 2008

Job Personnel

HES Emp Name	Exp Hrs	Emp #	HES Emp Name	Exp Hrs	Emp #	HES Emp Name	Exp Hrs	Emp #
CARRILLO, EDUARDO Carrillo	15.0	371263	DEETZ, DONALD E	15.0	389855	EVANS, JOSHUA Allen	8.0	427571

Equipment

HES Unit #	Distance-1 way	HES Unit #	Distance-1 way	HES Unit #	Distance-1 way	HES Unit #	Distance-1 way
10010921C	30 mile	10240236	30 mile	10243558	30 mile	10244148	30 mile
10949718	30 mile	6612	30 mile	75819	30 mile		

Job Hours

Date	On Location Hours	Operating Hours	Date	On Location Hours	Operating Hours	Date	On Location Hours	Operating Hours
12/1/07	10.5	2.5	12/2/07	4.5	1.0			

TOTAL Total is the sum of each column separately

Job

Job Times

Formation Name	Formation Depth (MD)	Top	Bottom	Called Out	Date	Time	Time Zone
				01 - Dec - 2007	11:00	CST	
Form Type			BHST	01 - Dec - 2007	13:30	CST	
Job depth MD	1460. ft		Job Depth TVD	01 - Dec - 2007	22:41	CST	
Water Depth			Wk Ht Above Floor	02 - Dec - 2007	00:10	CST	
Perforation Depth (MD)	From	To	Deparated Loc	02 - Dec - 2007	04:30	CST	

Well Data

Description	New / Used	Max pressure psig	Size in	ID in	Weight lbm/ft	Thread	Grade	Top MD ft	Bottom MD ft	Top TVD ft	Bottom TVD ft
Surface Open Hole				12.25					1700.		
Surface Casing	Used		9.625	8.921	36.				1700.		

Sales/Rental/3rd Party (HES)

Description	Qty	Qty uom	Depth	Supplier
SHOE, CSG, TIGER TOOTH, 9-5/8 8RD	1	EA		RECEIVED
V ASSY, INSR FLOAT, 9 5/8 LG, 8RD, F/ USE	1	EA		KANSAS CORPORATION COMMISSION
FILLUP ASSY - 1.500 ID - 9-5/8 &	1	EA		
CENTRALIZER-9-5/8"-CSG-12 1/4"-HINGED	0	EA		MAR 28 2008
COLLAR-STOP-9 5/8"-W/DOGS	0	EA		
BASKET - CEMENT - 9-5/8 CSG X 12-1/4	0	EA		CONSERVATION DIVISION WICHITA, KS
PLUG, CMTG, TOP, 9 5/8, HWE, 8.16 MIN/9.06 MA	1	EA		

Tools and Accessories

Type	Size	Qty	Make	Depth	Type	Size	Qty	Make	Depth	Type	Size	Qty	Make
Guide Shoe	9 5/8	1	H	1460	Packer					Top Plug	9 5/8	1	H
Float Shoe					Bridge Plug					Bottom Plug			
Float Collar					Retainer					SSR plug set			
Insert Float	9 5/8	1	H	1416						Plug Container	9 5/8	1	H
Stage Tool										Centralizers			

CONFIDENTIAL

MAR 27 2008

HALLIBURTON

KCC

Cementing Job Summary

Miscellaneous Materials											
Gelling Agt	Conc	Surfactant	Conc	Acid Type	Qty	Conc	%	Treatment Fld	Conc	Inhibitor	Conc
				Sand Type	Size						
Fluid Data											
Stage/Plug #: 1											
Fluid #	Stage Type	Fluid Name	Qty	Qty uom	Mixing Density lbm/gal	Yield ft ³ /sk	Mix Fluid Gal/sk	Rate bbl/min	Total Mix Fluid Gal/sk		
1	Water Spacer		20.00	bbl	8.33	.0	.0	.0			
2	Lead Cement	MIDCON-2 CEMENT PREMIUM PLUS - SBM (15079)	300.0	sacks	11.4	2.96	18.14		18.14		
	3 %	CALCIUM CHLORIDE - HI TEST PELLET (100005053)									
	0.25 lbm	POLY-E-FLAKE (101216940)									
	0.1 %	WG-17, 50 LB SK (100003623)									
	18.138 Gal	FRESH WATER									
3	Tail Cement	CMT - PREMIUM PLUS CEMENT (100012205)	180.0	sacks	14.8	1.34	6.32		6.32		
	94 lbm	CMT - PREMIUM PLUS - CLASS C REG OR TYPE III, BULK (100012205)									
	6.324 Gal	FRESH WATER									
	2 %	CALCIUM CHLORIDE - HI TEST PELLET (100005053)									
	0.25 lbm	POLY-E-FLAKE (101216940)									
4	Displacement Fluid		129.00	bbl	8.33	.0	.0	.0			
Calculated Values			Pressures			Volumes					
Displacement	109	Shut In: Instant		Lost Returns	0	Cement Slurry	201	Pad			
Top Of Cement	SURFACE	5 Min		Cement Returns	40	Actual Displacement	109	Treatment			
Frac Gradient		15 Min		Spacers	0	Load and Breakdown		Total Job	310		
Rates											
Circulating	5	Mixing	5	Displacement	5	Avg. Job	5				
Cement Left In Pipe	Amount	44 ft	Reason	Shoe Joint							
Frac Ring # 1 @	ID	Frac ring # 2 @	ID	Frac Ring # 3 @	ID	Frac Ring # 4 @	ID				
The Information Stated Herein Is Correct				Customer Representative Signature							

RECEIVED
KANSAS CORPORATION COMMISSION

MAR 28 2008

CONSERVATION DIVISION
WICHITA, KS

CONFIDENTIAL

MAR 27 2008

HALLIBURTON

KCC

Cementing Job Log

The Road to Excellence Starts with Safety

Sold To #: 348223	Ship To #: 2615927	Quote #:	Sales Order #: 5532712
Customer: EOG RESOURCES INC EBUSINESS		Customer Rep: BROCK, GARY	
Well Name: S & S	Well #: 27-1H	API/UWI #:	
Field:	City (SAP): UNKNOWN	County/Parish: Stevens	State: Kansas
Legal Description: Section 27 Township 32S Range 36W			
Lat: N 0 deg. OR N 0 deg. 0 min. 0 secs.		Long: E 0 deg. OR E 0 deg. 0 min. 0 secs.	
Contractor: ABERCROMBIE	Rig/Platform Name/Num: 5		
Job Purpose: Cement Surface Casing		Ticket Amount:	
Well Type: Development Well	Job Type: Cement Surface Casing		
Sales Person: BLAKEY, JOSEPH	Srvc Supervisor: DEETZ, DONALD	MBU ID Emp #: 389855	

Activity Description	Date/Time	Cht #	Rate bbl/min	Volume bbl		Pressure psig		Comments
				Stage	Total	Tubing	Casing	
Arrive At Loc	12/01/2007 13:30							RIG WAS PULLING DRILL PIPE
Pre-Job Safety Meeting	12/01/2007 13:35							
Rig-Up Completed	12/01/2007 14:35							
Start In Hole	12/01/2007 18:45							
Casing on Bottom	12/01/2007 20:59							
Other	12/01/2007 21:00							CASING STUCK IN HOLE @ 1460 FT RIG CIRCULATED THRU SWEDGE
Circulate Well	12/01/2007 21:02							WITH RIG
Test Lines	12/01/2007 22:42							2000 PSI
Pump Lead Cement	12/01/2007 22:47		5		158		250.0	300 SKS @ 11.4
Pump Tail Cement	12/01/2007 23:10		5		43		300.0	180 SKS @ 14.8
Drop Plug	12/01/2007 23:19							GOT BACK 40 BBL CEMENT RETURNS
Pump Displacement	12/01/2007 23:20		5		109		100.0	RIG WATER PUMPED 69 BBL SLOWED TO 3 BBL MIN @ 89 BBL GONE STOPED WAITED 5 MIN PUMPED 10 MORE BBL SHUT DOWN FOR 8 MIN PUMPED LAST 10 BBL

RECEIVED
KANSAS CORPORATION COMMISSION

MAR 28 2008

CONSERVATION DIVISION
WICHITA, KS

Sold To #: 348223

Ship To #: 2615927

Quote #:

Sales Order #: 5532712

SUMMIT Version: 7.20.130

Sunday, December 02, 2007 12:37:00

HALLIBURTON

Cementing Job Log

Activity Description	Date/Time	Cht #	Rate bbl/min	Volume bbl		Pressure psig		Comments
				Stage	Total	Tubing	Casing	
Bump Plug	12/02/2007 00:07							BUMPED PLUG @ 350 TOOK TO 1000 PSI CHECKED FLOATS DID NOT HOLD LANDED PLUG A 2ND TIME CHECKED FLOATS AGAIN STILL DIDNT HOLD SHUT IN FOR 4 HRS
End Job	12/02/2007 00:10							THANKS FOR CALLING HALLIBURTON ERIC & CREW
Post-Job Safety Meeting (Pre Rig-Down)	12/02/2007 00:15							

CONFIDENTIAL
MAR 27 2008
KCC

RECEIVED
KANSAS CORPORATION COMMISSION
MAR 28 2008
CONSERVATION DIVISION
WICHITA, KS

Sold To #: 348223

Ship To #: 2615927

Quote #:

Sales Order #:

5532712

SUMMIT Version: 7.20.130

Sunday, December 02, 2007 12:37:00

CONFIDENTIAL

M 18

HALLIBURTON

KCC

Cementing Job Summary

The Road to Excellence Starts with Safety

Sold To #: 348223	Ship To #: 2615927	Quote #:	Sales Order #: 5558191
Customer: EOG RESOURCES INC EBUSINESS		Customer Rep: BROCK, GARY	
Well Name: S & S		Well #: 27 1H	API/UWI #:
Field:	City (SAP): UNKNOWN	County/Parish: Stevens	State: Kansas
Contractor: ABERCROMBIE		Rig/Platform Name/Num: 5	
Job Purpose: Cement Production Casing			
Well Type: Development Well		Job Type: Cement Production Casing	
Sales Person: BLAKEY, JOSEPH		Srvc Supervisor: DEETZ, DONALD	MBU ID Emp #: 389855

CONFIDENTIAL
MAR 27 2003

KCC

Job Personnel

HES Emp Name	Exp Hrs	Emp #	HES Emp Name	Exp Hrs	Emp #	HES Emp Name	Exp Hrs	Emp #
BERUMEN, EDUARDO	11.0	267804	CARRILLO, EDUARDO Carrillo	11.0	371263	DEETZ, DONALD E	11.0	389855
GREEN, SCOTT Anthony	9.0	301261						

Equipment

HES Unit #	Distance-1 way	HES Unit #	Distance-1 way	HES Unit #	Distance-1 way	HES Unit #	Distance-1 way
10010921C	50 mile	10240236	50 mile	10717476	50 mile	10949718	50 mile
54218	50 mile	6612	50 mile				

Job Hours

Date	On Location Hours	Operating Hours	Date	On Location Hours	Operating Hours	Date	On Location Hours	Operating Hours
1/20/08	11	4						
TOTAL			Total is the sum of each column separately					

Job

Job Times

Formation Name	Formation Depth (MD)	Top	Bottom	Called Out	Date	Time	Time Zone
			BHST	On Location	20 - Jan - 2008	07:00	CST
Form Type	9053. ft		Job Depth TVD	Job Started	20 - Jan - 2008	10:30	CST
Water Depth			Wk Ht Above Floor	Job Completed	20 - Jan - 2008	17:09	CST
Perforation Depth (MD)	From	To		Job Completed	20 - Jan - 2008	18:45	CST
				Departed Loc	20 - Jan - 2008	21:30	CST

Well Data

Description	New / Used	Max pressure psig	Size in	ID in	Weight lbm/ft	Thread	Grade	Top MD ft	Bottom MD ft	Top TVD ft	Bottom TVD ft
Surface Casing	Used		9.625	8.921	36.				1700.	1700.	
Production Open Hole				8.75				1700.	9117.	1700.	6035.
Production Casing	Used		4.5	4.	11.6		N-80		9117.		6035.

Sales/Rental/3rd Party (HES)

Description	Qty	Qty uom	Depth	Supplier
SHOE-FLT- 4 1/2 8RD - HI-PORT	1	EA		KANSAS CORPORATION COMMISSION MAR 28 2008 CONSERVATION DIVISION WICHITA, KS
CLR,FLT,4-1/2 8RD,9.5-13.5PPF,2-3/4	1	EA		
KIT,HALL WELD-A	2	EA		
CLAMP - LIMIT - 7 - HINGED -	1	EA		
PLUG ASSY 4-1/2 OMEGA HWE 4.50 OD X 15.6	1	EA		

Tools and Accessories

Type	Size	Qty	Make	Depth	Type	Size	Qty	Make	Depth	Type	Size	Qty	Make
Guide Shoe					Packer					Top Plug	4 1/2	1	H
Float Shoe	4 1/2	1	H	9053	Bridge Plug					Bottom Plug			
Float Collar	4 1/2	1	H	9008	Retainer					SSR plug set			
Insert Float										Plug Container	4 1/2	1	H
Stage Tool										Centralizers			

HALLIBURTON

Cementing Job Summary

Miscellaneous Materials										
Gelling Agt	Conc	Surfactant	Conc	Acid Type	Qty	Conc	%			
Treatment Fld	Conc	Inhibitor	Conc	Sand Type	Size	Qty				
Fluid Data										
Stage/Plug #: 1										
Fluid #	Stage Type	Fluid Name	Qty	Qty uom	Mixing Density lbm/gal	Yield ft ³ /sk	Mix Fluid Gal/sk	Rate bbl/min	Total Mix Fluid Gal/sk	
1	MUD FLUSH II	MUD FLUSH II - SBM (508007)	50.00	bbbl	8.4	.0	.0	.0		
2	Lead Cement	POZ PREMIUM 50/50 - SBM (12302)	1170.0	sacks	13.9	1.47	6.26		6.26	
	6.259 Gal	FRESH WATER								
	10 %	CAL-SEAL 60, 50 LB BAG (101217146)								
	0.6 %	HALAD(R)-344, 50 LB (100003670)								
	0.5 %	D-AIR 3000 (101007446)								
	0.2 %	CFR-3, W/O DEFOAMER, 50 LB SK (100003653)								
	5 lbm	GILSONITE, BULK (100003700)								
3	Displacement with 1# sugar/bbl		50.00	bbbl	8.33	.0	.0	.0		
	1 lbm/bbl	SUGAR - GRANULATED, 10 LB BAG (101507884)								
4	Displacement Fluid		89.00	bbbl	8.33	.0	.0	.0		
5	15sx Rat & 15sx Mouse	POZ PREMIUM 50/50 - SBM (12302)	30.0	sacks	13.9	1.47	6.26		6.26	
	6.259 Gal	FRESH WATER								
	10 %	CAL-SEAL 60, 50 LB BAG (101217146)								
	0.6 %	HALAD(R)-344, 50 LB (100003670)								
	0.5 %	D-AIR 3000 (101007446)								
	0.2 %	CFR-3, W/O DEFOAMER, 50 LB SK (100003653)								
	5 lbm	GILSONITE, BULK (100003700)								
Calculated Values		Pressures			Volumes					
Displacement	139	Shut In: Instant		Lost Returns	0	Cement Slurry	306	Pad		
Top Of Cement		5 Min		Cement Returns	0	Actual Displacement	139	Treatment		
Frac Gradient		15 Min		Spacers	50	Load and Breakdown		Total Job	495	
Rates										
Circulating	6	Mixing	7	Displacement	8	Avg. Job	7			
Cement Left In Pipe	Amount	45 ft	Reason	Shoe Joint						
Frac Ring # 1 @	ID	Frac ring # 2 @	ID	Frac Ring # 3 @	ID	Frac Ring # 4 @	ID			
The Information Stated Herein Is Correct				Customer Representative Signature						
				<i>Dale Passig</i>						

CONFIDENTIAL
MAR 27 2008
KCC

RECEIVED
 KANSAS CORPORATION COMMISSION

MAR 28 2008

CONSERVATION DIVISION
 WICHITA, KS

HALLIBURTON

Cementing Job Log

The Road to Excellence Starts with Safety

Sold To #: 348223	Ship To #: 2615927	Quote #:	Sales Order #: 5558191
Customer: EOG RESOURCES INC EBUSINESS		Customer Rep: BROCK, GARY	
Well Name: S & S	Well #: 27 1H	API/UWI #:	
Field:	City (SAP): UNKNOWN	County/Parish: Stevens	State: Kansas
Legal Description: CONFIDENTIAL			
Lat:	Long:		MAR 27 2008
Contractor: ABERCROMBIE	Rig/Platform Name/Num: 5		
Job Purpose: Cement Production Casing			Ticket Amount: KCC
Well Type: Development Well	Job Type: Cement Production Casing		
Sales Person: BLAKEY, JOSEPH	Srv Supervisor: DEETZ, DONALD	MBU ID Emp #: 389855	

Activity Description	Date/Time	Cht #	Rate bbl/min	Volume bbl		Pressure psig		Comments
				Stage	Total	Tubing	Casing	
Arrive At Loc	01/20/2008 10:30							RIG WAS RUNNING CASING
Pre-Job Safety Meeting	01/20/2008 10:35							
Rig-Up Completed	01/20/2008 11:35							
Casing on Bottom	01/20/2008 14:15							LEFT TWO JOINTS OUT PUT ON HEAD CIRCULATED WITH RIG
Circulate Well	01/20/2008 14:30							WITH RIG
Test Lines	01/20/2008 17:10							TESTED LINES TO 5200
Pump Spacer 1	01/20/2008 17:11		7		50		1100.0	MUD FLUSH
Pump Cement	01/20/2008 17:20		7		306		750.0	1170 SKS @ 13.9
Clean Lines	01/20/2008 18:14							TO PIT
Drop Plug	01/20/2008 18:15							OMEGA PLUG
Pump Displacement	01/20/2008 18:17		8		139		1250.0	slowed rate last 10 bbl @ 2 bbl a min
Bump Plug	01/20/2008 18:44							BUMP PLUG @ 1000 TOOK TO 2000 BLEED OFF PSI CHECKED FLOATS OK
End Job	01/20/2008 18:45							THANKS FOR CALLING HALLIBURTON ERIC & CREW
Post-Job Safety Meeting (Pre Rig-Down)	01/20/2008 18:50							

RECEIVED
KANSAS CORPORATION COMMISSION

MAR 28 2008

CONSERVATION DIVISION
WICHITA, KS

Sold To #: 348223

Ship To #: 2615927

Quote #:

Sales Order #:

5558191

SUMMIT Version: 7.20.130

Sunday, January 20, 2008 07:08:00

Scientific Drilling International Planning Report

Company: E.O.G. RESOURCES	Date: 10/8/2007	Time: 15:51:32	Page: 1
Field: Stevens County Kansas	Co-ordinate(NE) Reference: Well: S&S 27 1H, Grid North		
Site: Section 27 - 32S - 36W	Vertical (TVD) Reference: SITE 3069.0		
Well: S&S 27 1H	Section (VS) Reference: Well (0.00N,0.00E,41.57Azi)		
Wellpath: Original Wellpath	Plan:	Plan #4	

Field: Stevens County Kansas Stevens County Kansas	Map Zone: Kansas, Southern Zone
Map System: US State Plane Coordinate System 1927	Coordinate System: Well Centre
Geo Datum: NAD27 (Clarke 1866)	Geomagnetic Model: igrf2005
Sys Datum: Mean Sea Level	

Site: Section 27 - 32S - 36W Stevens County Kansas Section 27 - 32S - 36W	
Site Position: Northing: 218340.00 ft	Latitude: 37 14 4.389 N
From: Map Easting: 1207775.00 ft	Longitude: 101 13 17.332 W
Position Uncertainty: 0.0 ft	North Reference: Grid
Ground Level: 0.0 ft	Grid Convergence: -1.67 deg

Well: S&S 27 1H S&S 27 1H	Slot Name:
Well Position: +N/-S 0.0 ft	Northing: 218340.00 ft
+E/-W 0.0 ft	Easting: 1207775.00 ft
Position Uncertainty: 0.0 ft	Latitude: 37 14 4.389 N
	Longitude: 101 13 17.332 W

Wellpath: Original Wellpath Original Wellpath of S&S 27 1H	Drilled From: Surface
Current Datum: SITE	Tie-on Depth: 0.0 ft
Magnetic Data: 8/16/2007	Above System Datum: Mean Sea Level
Field Strength: 52234 nT	Declination: 7.15 deg
Vertical Section: Depth From (TVD)	Mag Dip Angle: 65.14 deg
ft	+N/-S
	+E/-W
	Direction
	deg
0.0	0.0
0.0	0.0
0.0	41.57

Plan: Plan #4 Plan #4 S&S 27 1H	Date Composed: 8/16/2007
Principal: Yes	Version: 1
	Tied-to: From Surface

Plan Section Information

MD ft	Incl deg	Azim deg	TVD ft	+N/-S ft	+E/-W ft	DLS deg/100ft	Build deg/100ft	Turn deg/100ft	TFO deg	Target
0.0	0.00	41.57	0.0	0.0	0.0	0.00	0.00	0.00	0.00	
5370.0	0.00	41.57	5370.0	0.0	0.0	0.00	0.00	0.00	41.57	
6083.9	71.39	41.57	5913.0	291.8	258.9	10.00	10.00	0.00	0.00	
6303.8	71.39	41.57	5983.2	447.8	397.1	0.00	0.00	0.00	0.00	
6477.1	88.72	41.57	6013.0	575.0	510.0	10.00	10.00	0.00	0.00	
7956.1	88.72	41.57	6046.0	1681.2	1491.2	0.00	0.00	0.00	0.00	
8018.2	90.58	41.57	6046.4	1727.6	1532.3	3.00	3.00	0.00	-0.05	
8839.9	90.58	41.57	6038.0	2342.4	2077.6	0.00	0.00	0.00	0.00	
9117.4	90.58	41.57	6035.2	2550.0	2261.7	0.00	0.00	0.00	0.00	

Section 1 : Start Hold

MD ft	Incl deg	Azim deg	TVD ft	+N/-S ft	+E/-W ft	VS ft	DLS deg/100ft	Build deg/100ft	Turn deg/100ft	TFO deg
0.0	0.00	41.57	0.0	0.0	0.0	0.0	0.00	0.00	0.00	0.00
5370.0	0.00	41.57	5370.0	0.0	0.0	0.0	0.00	0.00	0.00	41.57

Section 2 : Start Build 10.00

MD ft	Incl deg	Azim deg	TVD ft	+N/-S ft	+E/-W ft	VS ft	DLS deg/100ft	Build deg/100ft	Turn deg/100ft	TFO deg
5400.0	3.00	41.57	5400.0	0.6	0.5	0.8	10.00	10.00	0.00	0.00
5450.0	8.00	41.57	5449.7	4.2	3.7	5.6	10.00	10.00	0.00	0.00
5500.0	13.00	41.57	5498.9	11.0	9.7	14.7	10.00	10.00	0.00	0.00
5550.0	18.00	41.57	5547.1	21.0	18.6	28.0	10.00	10.00	0.00	0.00
5600.0	23.00	41.57	5593.9	34.1	30.2	45.5	10.00	10.00	0.00	0.00
5650.0	28.00	41.57	5639.0	50.2	44.5	67.1	10.00	10.00	0.00	0.00
5700.0	33.00	41.57	5682.1	69.2	61.3	92.4	10.00	10.00	0.00	0.00
5750.0	38.00	41.57	5722.7	90.9	80.6	121.5	10.00	10.00	0.00	0.00

CONFIDENTIAL
MAR 27 2008
KCC

RECEIVED
KANSAS CORPORATION COMMISSION

MAR 28 2008

Scientific Drilling International Planning Report

Company: E.O.G. RESOURCES	Date: 10/8/2007	Time: 15:51:32	Page: 2
Field: Stevens County Kansas	Co-ordinate(NE) Reference: Well: S&S 27 1H, Grid North		
Site: Section 27 - 32S - 36W	Vertical (TVD) Reference: SITE 3069.0		
Well: S&S 27 1H	Section (VS) Reference: Well (0.00N,0.00E,41.57Azi)		
Wellpath: Original Wellpath	Plan: Plan #4		

Section 2 : Start Build 10.00

MD ft	Incl deg	Azim deg	TVD ft	+N/-S ft	+E/-W ft	VS ft	DLS deg/100ft	Build deg/100ft	Turn deg/100ft	TFO deg
5800.0	43.00	41.57	5760.8	115.2	102.1	153.9	10.00	10.00	0.00	0.00
5850.0	48.00	41.57	5795.8	141.8	125.8	189.6	10.00	10.00	0.00	0.00
5900.0	53.00	41.57	5827.6	170.7	151.4	228.1	10.00	10.00	0.00	0.00
5950.0	58.00	41.57	5855.9	201.5	178.7	269.3	10.00	10.00	0.00	0.00
6000.0	63.00	41.57	5880.5	234.0	207.6	312.8	10.00	10.00	0.00	0.00
6050.0	68.00	41.57	5901.2	268.1	237.8	358.3	10.00	10.00	0.00	0.00
6083.9	71.39	41.57	5913.0	291.8	258.9	390.1	10.00	10.00	0.00	0.00

Section 3 : Start Hold

MD ft	Incl deg	Azim deg	TVD ft	+N/-S ft	+E/-W ft	VS ft	DLS deg/100ft	Build deg/100ft	Turn deg/100ft	TFO deg
6100.0	71.39	41.57	5918.1	303.3	269.0	405.4	0.00	0.00	0.00	0.00
6200.0	71.39	41.57	5950.1	374.2	331.9	500.1	0.00	0.00	0.00	0.00
6303.8	71.39	41.57	5983.2	447.8	397.1	598.5	0.00	0.00	0.00	0.00

Section 4 : Start DLS 10.00 TFO 0.00

MD ft	Incl deg	Azim deg	TVD ft	+N/-S ft	+E/-W ft	VS ft	DLS deg/100ft	Build deg/100ft	Turn deg/100ft	TFO deg
6350.0	76.01	41.57	5996.1	480.9	426.6	642.8	10.00	10.00	0.00	0.00
6400.0	81.01	41.57	6006.1	517.6	459.1	691.8	10.00	10.00	0.00	0.00
6450.0	86.01	41.57	6011.8	554.7	492.0	741.5	10.00	10.00	0.00	0.00
6477.1	88.72	41.57	6013.0	575.0	510.0	768.6	10.00	10.00	0.00	0.00

Section 5 : Start Hold

MD ft	Incl deg	Azim deg	TVD ft	+N/-S ft	+E/-W ft	VS ft	DLS deg/100ft	Build deg/100ft	Turn deg/100ft	TFO deg
6500.0	88.72	41.57	6013.5	592.1	525.2	791.5	0.00	0.00	0.00	0.00
6600.0	88.72	41.57	6015.7	666.9	591.5	891.4	0.00	0.00	0.00	0.00
6700.0	88.72	41.57	6018.0	741.7	657.9	991.4	0.00	0.00	0.00	0.00
6800.0	88.72	41.57	6020.2	816.5	724.2	1091.4	0.00	0.00	0.00	0.00
6900.0	88.72	41.57	6022.4	891.3	790.5	1191.4	0.00	0.00	0.00	0.00
7000.0	88.72	41.57	6024.7	966.1	856.9	1291.3	0.00	0.00	0.00	0.00
7100.0	88.72	41.57	6026.9	1040.9	923.2	1391.3	0.00	0.00	0.00	0.00
7200.0	88.72	41.57	6029.1	1115.7	989.5	1491.3	0.00	0.00	0.00	0.00
7300.0	88.72	41.57	6031.4	1190.5	1055.9	1591.3	0.00	0.00	0.00	0.00
7400.0	88.72	41.57	6033.6	1265.3	1122.2	1691.2	0.00	0.00	0.00	0.00
7500.0	88.72	41.57	6035.8	1340.0	1188.6	1791.2	0.00	0.00	0.00	0.00
7600.0	88.72	41.57	6038.1	1414.8	1254.9	1891.2	0.00	0.00	0.00	0.00
7700.0	88.72	41.57	6040.3	1489.6	1321.2	1991.2	0.00	0.00	0.00	0.00
7800.0	88.72	41.57	6042.5	1564.4	1387.6	2091.1	0.00	0.00	0.00	0.00
7900.0	88.72	41.57	6044.7	1639.2	1453.9	2191.1	0.00	0.00	0.00	0.00
7956.1	88.72	41.57	6046.0	1681.2	1491.2	2247.2	0.00	0.00	0.00	0.00

Section 6 : Start DLS 3.00 TFO -0.05

MD ft	Incl deg	Azim deg	TVD ft	+N/-S ft	+E/-W ft	VS ft	DLS deg/100ft	Build deg/100ft	Turn deg/100ft	TFO deg
8000.0	90.04	41.57	6046.5	1714.0	1520.3	2291.1	3.00	3.00	0.00	-0.05
8018.2	90.58	41.57	6046.4	1727.6	1532.3	2309.3	3.00	3.00	0.00	-0.05

Section 7 : Start Hold

MD ft	Incl deg	Azim deg	TVD ft	+N/-S ft	+E/-W ft	VS ft	DLS deg/100ft	Build deg/100ft	Turn deg/100ft	TFO deg
8100.0	90.58	41.57	6045.5	1788.8	1586.6	2391.1	0.00	0.00	0.00	0.00
8200.0	90.58	41.57	6044.5	1863.6	1653.0	2491.1	0.00	0.00	0.00	0.00
8300.0	90.58	41.57	6043.5	1938.5	1719.3	2591.1	0.00	0.00	0.00	0.00
8400.0	90.58	41.57	6042.5	2013.3	1785.7	2691.1	0.00	0.00	0.00	0.00
8500.0	90.58	41.57	6041.5	2088.1	1852.0	2791.1	0.00	0.00	0.00	0.00
8600.0	90.58	41.57	6040.4	2162.9	1918.4	2891.1	0.00	0.00	0.00	0.00
8700.0	90.58	41.57	6039.4	2237.7	1984.7	2991.1	0.00	0.00	0.00	0.00

RECEIVED
KANSAS CORPORATION COMMISSION

MAR 28 2008

Scientific Drilling International Planning Report

Company: E.O.G. RESOURCES	Date: 10/8/2007	Time: 15:51:32	Page: 3
Field: Stevens County Kansas	Co-ordinate(NE) Reference: Well: S&S 27 1H, Grid North		
Site: Section 27 - 32S - 36W	Vertical (TVD) Reference: SITE 3069.0		
Well: S&S 27 1H	Section (VS) Reference: Well (0.00N,0.00E,41.57Azi)		
Wellpath: Original Wellpath	Plan: Plan #4		

Section 7 : Start Hold

MD ft	Incl deg	Azim deg	TVD ft	+N/-S ft	+E/-W ft	VS ft	DLS deg/100ft	Build deg/100ft	Turn deg/100ft	TFO deg
8800.0	90.58	41.57	6038.4	2312.5	2051.1	3091.0	0.00	0.00	0.00	0.00
8839.9	90.58	41.57	6038.0	2342.4	2077.6	3131.0	0.00	0.00	0.00	0.00

Section 8 : Start Hold

MD ft	Incl deg	Azim deg	TVD ft	+N/-S ft	+E/-W ft	VS ft	DLS deg/100ft	Build deg/100ft	Turn deg/100ft	TFO deg
8900.0	90.58	41.57	6037.4	2387.3	2117.4	3191.0	0.00	0.00	0.00	0.00
9000.0	90.58	41.57	6036.4	2462.1	2183.8	3291.0	0.00	0.00	0.00	0.00
9100.0	90.58	41.57	6035.3	2536.9	2250.1	3391.0	0.00	0.00	0.00	0.00
9117.4	90.58	41.57	6035.2	2550.0	2261.7	3408.5	0.00	0.00	0.00	0.00

Survey

MD ft	Incl deg	Azim deg	TVD ft	+N/-S ft	+E/-W ft	VS ft	DLS deg/100ft	Build deg/100ft	Turn deg/100ft	Tool/Comment
5370.0	0.00	41.57	5370.0	0.0	0.0	0.0	0.00	0.00	0.00	
5400.0	3.00	41.57	5400.0	0.6	0.5	0.8	10.00	10.00	0.00	
5450.0	8.00	41.57	5449.7	4.2	3.7	5.6	10.00	10.00	0.00	
5500.0	13.00	41.57	5498.9	11.0	9.7	14.7	10.00	10.00	0.00	
5550.0	18.00	41.57	5547.1	21.0	18.6	28.0	10.00	10.00	0.00	
5600.0	23.00	41.57	5593.9	34.1	30.2	45.5	10.00	10.00	0.00	
5650.0	28.00	41.57	5639.0	50.2	44.5	67.1	10.00	10.00	0.00	
5700.0	33.00	41.57	5682.1	69.2	61.3	92.4	10.00	10.00	0.00	
5750.0	38.00	41.57	5722.7	90.9	80.6	121.5	10.00	10.00	0.00	
5800.0	43.00	41.57	5760.8	115.2	102.1	153.9	10.00	10.00	0.00	
5850.0	48.00	41.57	5795.8	141.8	125.8	189.6	10.00	10.00	0.00	
5900.0	53.00	41.57	5827.6	170.7	151.4	228.1	10.00	10.00	0.00	
5950.0	58.00	41.57	5855.9	201.5	178.7	269.3	10.00	10.00	0.00	
6000.0	63.00	41.57	5880.5	234.0	207.6	312.8	10.00	10.00	0.00	
6050.0	68.00	41.57	5901.2	268.1	237.8	358.3	10.00	10.00	0.00	
6083.9	71.39	41.57	5913.0	291.8	258.9	390.1	10.00	10.00	0.00	
6100.0	71.39	41.57	5918.1	303.3	269.0	405.4	0.00	0.00	0.00	
6200.0	71.39	41.57	5950.1	374.2	331.9	500.1	0.00	0.00	0.00	
6303.8	71.39	41.57	5983.2	447.8	397.1	598.5	0.00	0.00	0.00	
6350.0	76.01	41.57	5996.1	480.9	426.6	642.8	10.00	10.00	0.00	
6400.0	81.01	41.57	6006.1	517.6	459.1	691.8	10.00	10.00	0.00	
6450.0	86.01	41.57	6011.8	554.7	492.0	741.5	10.00	10.00	0.00	
6477.1	88.72	41.57	6013.0	575.0	510.0	768.6	10.00	10.00	0.00	
6500.0	88.72	41.57	6013.5	592.1	525.2	791.5	0.00	0.00	0.00	
6600.0	88.72	41.57	6015.7	666.9	591.5	891.4	0.00	0.00	0.00	
6700.0	88.72	41.57	6018.0	741.7	657.9	991.4	0.00	0.00	0.00	
6800.0	88.72	41.57	6020.2	816.5	724.2	1091.4	0.00	0.00	0.00	
6900.0	88.72	41.57	6022.4	891.3	790.5	1191.4	0.00	0.00	0.00	
7000.0	88.72	41.57	6024.7	966.1	856.9	1291.3	0.00	0.00	0.00	
7100.0	88.72	41.57	6026.9	1040.9	923.2	1391.3	0.00	0.00	0.00	
7200.0	88.72	41.57	6029.1	1115.7	989.5	1491.3	0.00	0.00	0.00	
7300.0	88.72	41.57	6031.4	1190.5	1055.9	1591.3	0.00	0.00	0.00	
7400.0	88.72	41.57	6033.6	1265.3	1122.2	1691.2	0.00	0.00	0.00	
7500.0	88.72	41.57	6035.8	1340.0	1188.6	1791.2	0.00	0.00	0.00	
7600.0	88.72	41.57	6038.1	1414.8	1254.9	1891.2	0.00	0.00	0.00	
7700.0	88.72	41.57	6040.3	1489.6	1321.2	1991.2	0.00	0.00	0.00	
7800.0	88.72	41.57	6042.5	1564.4	1387.6	2091.1	0.00	0.00	0.00	
7900.0	88.72	41.57	6044.7	1639.2	1453.9	2191.1	0.00	0.00	0.00	
7956.1	88.72	41.57	6046.0	1681.2	1491.2	2247.2	0.00	0.00	0.00	
8000.0	90.04	41.57	6046.5	1714.0	1520.3	2291.1	3.00	3.00	0.00	

CONFIDENTIAL
MAR 27 2008

KCC

RECEIVED
KANSAS CORPORATION COMMISSION

MAR 28 2008

CONSERVATION DIVISION
WICHITA, KS

Scientific Drilling International Planning Report

Company: E.O.G. RESOURCES	Date: 10/8/2007	Time: 15:51:32	Page: 4
Field: Stevens County Kansas	Co-ordinate(NE) Reference: Well: S&S 27 1H, Grid North		
Site: Section 27 - 32S - 36W	Vertical (TVD) Reference: SITE 3069.0		
Well: S&S 27 1H	Section (VS) Reference: Well (0.00N,0.00E,41.57Azi)		
Wellpath: Original Wellpath	Plan: Plan #4		

Survey

MD ft	Incl deg	Azim deg	TVD ft	+N/-S ft	+E/-W ft	VS ft	DLS deg/100ft	Build deg/100ft	Turn deg/100ft	Tool/Comment
8018.2	90.58	41.57	6046.4	1727.6	1532.3	2309.3	3.00	3.00	0.00	
8100.0	90.58	41.57	6045.5	1788.8	1586.6	2391.1	0.00	0.00	0.00	
8200.0	90.58	41.57	6044.5	1863.6	1653.0	2491.1	0.00	0.00	0.00	
8300.0	90.58	41.57	6043.5	1938.5	1719.3	2591.1	0.00	0.00	0.00	
8400.0	90.58	41.57	6042.5	2013.3	1785.7	2691.1	0.00	0.00	0.00	
8500.0	90.58	41.57	6041.5	2088.1	1852.0	2791.1	0.00	0.00	0.00	
8600.0	90.58	41.57	6040.4	2162.9	1918.4	2891.1	0.00	0.00	0.00	
8700.0	90.58	41.57	6039.4	2237.7	1984.7	2991.1	0.00	0.00	0.00	
8800.0	90.58	41.57	6038.4	2312.5	2051.1	3091.0	0.00	0.00	0.00	
8839.9	90.58	41.57	6038.0	2342.4	2077.6	3131.0	0.00	0.00	0.00	
8900.0	90.58	41.57	6037.4	2387.3	2117.4	3191.0	0.00	0.00	0.00	
9000.0	90.58	41.57	6036.4	2462.1	2183.8	3291.0	0.00	0.00	0.00	
9100.0	90.58	41.57	6035.3	2536.9	2250.1	3391.0	0.00	0.00	0.00	
9117.4	90.58	41.57	6035.2	2550.0	2261.7	3408.5	0.00	0.00	0.00	

CONFIDENTIAL
MAR 27 2008
KCC

RECEIVED
KANSAS CORPORATION COMMISSION

MAR 28 2008

CONSERVATION DIVISION
WICHITA, KS

Scientific Drilling International

Lease Line Survey Report

Company: E.O.G. RESOURCES	Date: 10/8/2007	Time: 15:52:33	Page: 1
Field: Stevens County Kansas	Co-ordinate(NE) Reference: Well: S&S 27 1H, Grid North		
Site: Section 27 - 32S - 36W	Vertical (TVD) Reference: SITE 3069.0		
Well: S&S 27 1H	Section (VS) Reference: Well (0.00N,0.00E,41.57Azi)		
Wellpath: Original Wellpath	Survey Calculation Method: Minimum Curvature	Db: Sybase	

Plan: Plan #4 Plan #4 S&S 27 1H	Date Composed: 8/16/2007
Principal: Yes	Version: 1
	Tied-to: From Surface

Well: S&S 27 1H S&S 27 1H	Slot Name:
Well Position: +N/-S 0.0 ft Northing: 218340.00 ft	Latitude: 37 14 4.389 N
+E/-W 0.0 ft Easting: 1207775.00 ft	Longitude: 101 13 17.332 W
Position Uncertainty: 0.0 ft	

MD ft	Incl deg	Azim deg	TVD ft	N/S ft	E/W ft	FSL ft	FWL ft	Lat	Long
5370.0	0.00	41.57	5370.0	0.0	0.0	2400.0	2465.0	37 14 4.389	N101 13 17.332 W
5400.0	3.00	41.57	5400.0	0.6	0.5	2400.6	2465.5	37 14 4.395	N101 13 17.326 W
5450.0	8.00	41.57	5449.7	4.2	3.7	2404.2	2468.7	37 14 4.431	N101 13 17.288 W
5500.0	13.00	41.57	5498.9	11.0	9.7	2411.0	2474.7	37 14 4.500	N101 13 17.216 W
5550.0	18.00	41.57	5547.1	21.0	18.6	2421.0	2483.6	37 14 4.601	N101 13 17.110 W
5600.0	23.00	41.57	5593.9	34.1	30.2	2434.1	2495.2	37 14 4.734	N101 13 16.971 W
5650.0	28.00	41.57	5639.0	50.2	44.5	2450.2	2509.5	37 14 4.897	N101 13 16.800 W
5700.0	33.00	41.57	5682.1	69.2	61.3	2469.2	2526.3	37 14 5.090	N101 13 16.599 W
5750.0	38.00	41.57	5722.7	90.9	80.6	2490.9	2545.6	37 14 5.310	N101 13 16.369 W
5800.0	43.00	41.57	5760.8	115.2	102.1	2515.2	2567.1	37 14 5.556	N101 13 16.111 W
5850.0	48.00	41.57	5795.8	141.8	125.8	2541.8	2590.8	37 14 5.827	N101 13 15.829 W
5900.0	53.00	41.57	5827.6	170.7	151.4	2570.7	2616.4	37 14 6.119	N101 13 15.523 W
5950.0	58.00	41.57	5855.9	201.5	178.7	2601.5	2643.7	37 14 6.432	N101 13 15.196 W
6000.0	63.00	41.57	5880.5	234.0	207.6	2634.0	2672.6	37 14 6.762	N101 13 14.851 W
6050.0	68.00	41.57	5901.2	268.1	237.8	2668.1	2702.8	37 14 7.107	N101 13 14.490 W
6083.9	71.39	41.57	5913.0	291.8	258.9	2691.8	2723.9	37 14 7.348	N101 13 14.238 W
6100.0	71.39	41.57	5918.1	303.3	269.0	2703.3	2734.0	37 14 7.463	N101 13 14.117 W
6200.0	71.39	41.57	5950.1	374.2	331.9	2774.2	2796.9	37 14 8.182	N101 13 13.365 W
6303.8	71.39	41.57	5983.2	447.8	397.1	2847.8	2862.1	37 14 8.928	N101 13 12.585 W
6350.0	76.01	41.57	5996.1	480.9	426.6	2880.9	2891.6	37 14 9.265	N101 13 12.234 W
6400.0	81.01	41.57	6006.1	517.6	459.1	2917.6	2924.1	37 14 9.636	N101 13 11.845 W
6450.0	86.01	41.57	6011.8	554.7	492.0	2954.7	2957.0	37 14 10.013	N101 13 11.451 W
6477.1	88.72	41.57	6013.0	575.0	510.0	2975.0	2975.0	37 14 10.218	N101 13 11.236 W
6500.0	88.72	41.57	6013.5	592.1	525.2	2992.1	2990.2	37 14 10.392	N101 13 11.055 W
6600.0	88.72	41.57	6015.7	666.9	591.5	3066.9	3056.5	37 14 11.150	N101 13 10.262 W
6700.0	88.72	41.57	6018.0	741.7	657.9	3141.7	3122.9	37 14 11.909	N101 13 9.469 W
6800.0	88.72	41.57	6020.2	816.5	724.2	3216.5	3189.2	37 14 12.667	N101 13 8.676 W
6900.0	88.72	41.57	6022.4	891.3	790.5	3291.3	3255.5	37 14 13.425	N101 13 7.883 W
7000.0	88.72	41.57	6024.7	966.1	856.9	3366.1	3321.9	37 14 14.184	N101 13 7.090 W
7100.0	88.72	41.57	6026.9	1040.9	923.2	3440.9	3388.2	37 14 14.942	N101 13 6.297 W
7200.0	88.72	41.57	6029.1	1115.7	989.5	3515.7	3454.5	37 14 15.700	N101 13 5.504 W
7300.0	88.72	41.57	6031.4	1190.5	1055.9	3590.5	3520.9	37 14 16.458	N101 13 4.711 W
7400.0	88.72	41.57	6033.6	1265.3	1122.2	3665.3	3587.2	37 14 17.217	N101 13 3.918 W
7500.0	88.72	41.57	6035.8	1340.0	1188.6	3740.0	3653.6	37 14 17.975	N101 13 3.125 W
7600.0	88.72	41.57	6038.1	1414.8	1254.9	3814.8	3719.9	37 14 18.733	N101 13 2.332 W
7700.0	88.72	41.57	6040.3	1489.6	1321.2	3889.6	3786.2	37 14 19.492	N101 13 1.539 W
7800.0	88.72	41.57	6042.5	1564.4	1387.6	3964.4	3852.6	37 14 20.250	N101 13 0.746 W
7900.0	88.72	41.57	6044.7	1639.2	1453.9	4039.2	3918.9	37 14 21.008	N101 12 59.953 W
7956.1	88.72	41.57	6046.0	1681.2	1491.2	4081.2	3956.2	37 14 21.434	N101 12 59.507 W
8000.0	90.04	41.57	6046.5	1714.0	1520.3	4114.0	3985.3	37 14 21.767	N101 12 59.159 W
8018.2	90.58	41.57	6046.4	1727.6	1532.3	4127.6	3997.3	37 14 21.905	N101 12 59.015 W
8100.0	90.58	41.57	6045.5	1788.8	1586.6	4188.8	4051.6	37 14 22.525	N101 12 58.366 W
8200.0	90.58	41.57	6044.5	1863.6	1653.0	4263.6	4118.0	37 14 23.284	N101 12 57.573 W
8300.0	90.58	41.57	6043.5	1938.5	1719.3	4338.5	4184.3	37 14 24.042	N101 12 56.780 W
8400.0	90.58	41.57	6042.5	2013.3	1785.7	4413.3	4250.7	37 14 24.800	N101 12 55.987 W

CONFIDENTIAL

MAR 27 2003

KCC

RECEIVED
KANSAS CORPORATION COMMISSION

MAR 28 2008

CONSERVATION DIVISION
WICHITA, KS

Scientific Drilling International

Lease Line Survey Report

Company: E.O.G. RESOURCES	Date: 10/8/2007	Time: 15:52:33	Page: 2
Field: Stevens County Kansas	Co-ordinate(NE) Reference: Well: S&S 27 1H, Grid North		
Site: Section 27 - 32S - 36W	Vertical (TVD) Reference: SITE 3069.0		
Well: S&S 27 1H	Section (VS) Reference: Well (0.00N,0.00E,41.57Azi)		
Wellpath: Original Wellpath	Survey Calculation Method: Minimum Curvature	Db: Sybase	

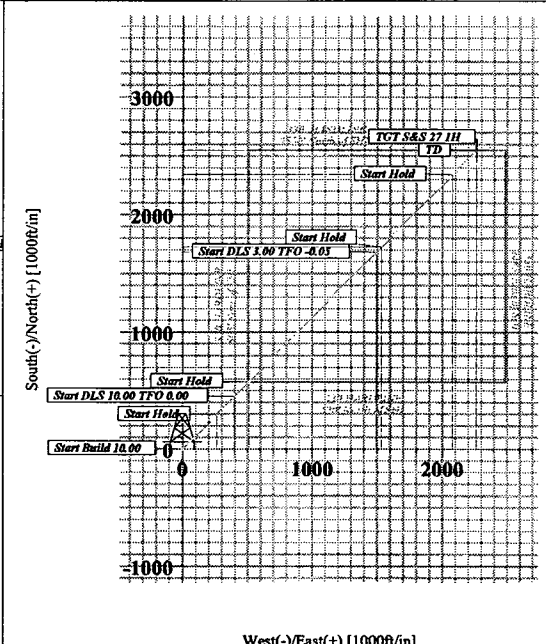
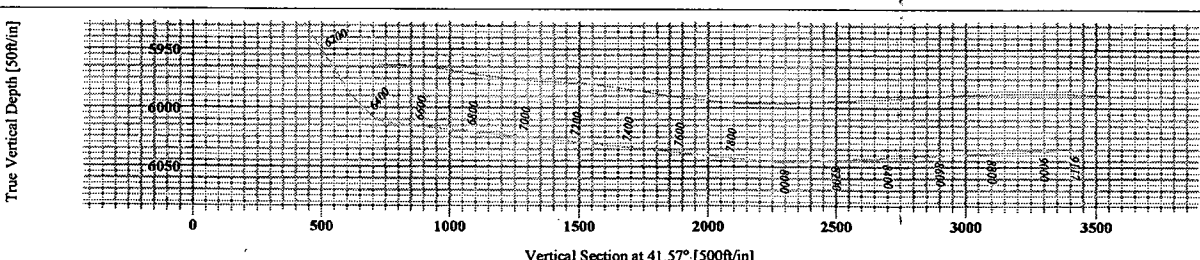
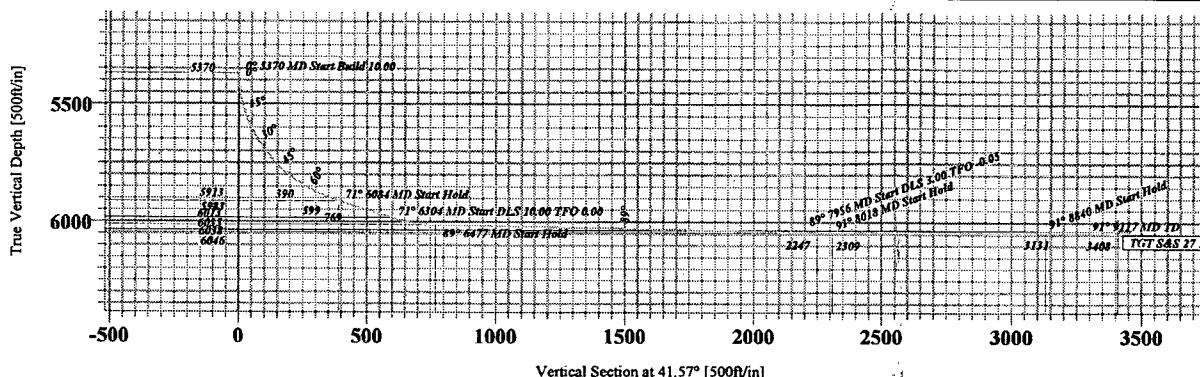
Survey

MD ft	Incl deg	Azim deg	TVD ft	N/S ft	E/W ft	FSL ft	FWL ft	Lat	Long				
8500.0	90.58	41.57	6041.5	2088.1	1852.0	4488.1	4317.0	37 14	25.559	N101	12	55.193	W
8600.0	90.58	41.57	6040.4	2162.9	1918.4	4562.9	4383.4	37 14	26.317	N101	12	54.400	W
8700.0	90.58	41.57	6039.4	2237.7	1984.7	4637.7	4449.7	37 14	27.076	N101	12	53.607	W
8800.0	90.58	41.57	6038.4	2312.5	2051.1	4712.5	4516.1	37 14	27.834	N101	12	52.814	W
8839.9	90.58	41.57	6038.0	2342.4	2077.6	4742.4	4542.6	37 14	28.137	N101	12	52.497	W
8900.0	90.58	41.57	6037.4	2387.3	2117.4	4787.3	4582.4	37 14	28.593	N101	12	52.021	W
9000.0	90.58	41.57	6036.4	2462.1	2183.8	4862.1	4648.8	37 14	29.351	N101	12	51.227	W
9100.0	90.58	41.57	6035.3	2536.9	2250.1	4936.9	4715.1	37 14	30.110	N101	12	50.434	W
9117.4	90.58	41.57	6035.2	2550.0	2261.7	4950.0	4726.7	37 14	30.242	N101	12	50.296	W

RECEIVED
KANSAS CORPORATION COMMISSION

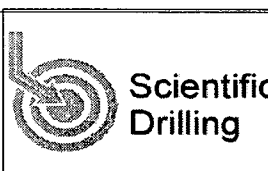
MAR 28 2008

CONSERVATION DIVISION
WICHITA, KS



SECTION DETAILS										
Sec	MD	Inc	Azt	TVD	+N-S	+E-W	DLeg	TFace	VSec	Target
1	0.0	0.00	41.37	0.0	0.0	0.0	0.00	0.00	0.0	
2	5370.0	0.00	41.37	5370.0	0.0	0.0	0.00	41.37	0.0	
3	6083.9	71.39	41.37	5913.0	291.8	258.9	10.00	0.00	390.1	
4	6303.8	71.39	41.37	5883.2	447.8	397.1	0.00	0.00	398.3	
5	6477.1	88.72	41.37	6013.0	375.0	310.0	10.00	0.00	768.6	
6	7936.1	88.72	41.37	6046.0	1681.2	1491.2	0.00	0.00	2347.2	
7	8018.2	90.58	41.37	6046.4	1727.6	1532.3	3.00	-0.05	2309.3	
8	8839.9	90.58	41.37	6038.0	2342.4	2077.6	0.00	0.00	3131.0	
9	9117.4	90.58	41.37	6035.2	2350.0	2261.7	0.00	0.00	3408.3	

TARGET DETAILS						
Name	TVD	+N-S	+E-W	Northing	Easting	Shape
TGT S&S 27 1H	6035.2	2350.0	2261.7	220890.00	1210036.70	Point



RECEIVED
KANSAS CORPORATION COMMISSION
MAR 28 2008
CONFIDENTIAL
MAR 27 2008
KCC
CONSERVATION DIVISION
WICHITA, KS