

CONFIDENTIAL

NOTE: ACOI orig. rec'd 4/14/08. This is a cc. It's already in FBRMS.
Form ACO-1
September 1999
Form must be Typed
3/27/10
9/21/08

KANSAS CORPORATION COMMISSION
OIL & GAS CONSERVATION DIVISION

AMENDED

WELL COMPLETION FORM
WELL HISTORY - DESCRIPTION OF WELL & LEASE

ORIGINAL

Operator: License # 5278
Name: EOG Resources, Inc.
Address 3817 NW Expressway, Suite 500
City/State/Zip Oklahoma City, Oklahoma 73112
Purchaser: DCP MIDSTREAM
Operator Contact Person: MELISSA STURM
Phone (405) 246-3234
Contractor: Name: KENAI MID-CONTINENT
License: 34000

API NO. 15- 189-22629-01-00
County STEVENS
NE NE SW Sec. 27 Twp. 32 S. R. 36 E W
2400 Feet from S (circle one) Line of Section
2465 Feet from E (circle one) Line of Section
Footages Calculated from Nearest Outside Section Corner:
(circle one) NE SE NW SW
Lease Name S & S Well # 27 #1H
Field Name UNASSIGNED

RECEIVED
KANSAS CORPORATION COMMISSION
SEP 09 2008
CONSERVATION DIVISION
WICHITA, KS

Wellsite Geologist: _____
Designate Type of Completion
 New Well Re-Entry Workover
 Oil SWD SIOW Temp. Abd.
 Gas ENHR SIGW
 Dry Other (Core, WSW, Expl., Cathodic, etc.)

Producing Formation MORROW
Elevation: Ground 3056' Kelley Bushing 3067'
Total Depth 9142' Plug Back Total Depth _____
Amount of Surface Pipe Set and Cemented at 1460' Feet
Multiple Stage Cementing Collar Used? Yes No
If yes, show depth set _____ Feet
If Alternate II completion, cement circulated from _____
feet depth to _____ w/ _____ sx cmt.

If Workover/Reentry: Old Well Info as follows:
Operator: _____
Well Name: **CONFIDENTIAL**
Original Comp. Date _____ Original Total Depth _____
 Deepening Re-perf. Conv. to Enhr./SWD
 Plug Back _____ Plug Back Total Depth _____
 Commingled _____ Docket No. _____
 Dual Completion _____ Docket No. _____
 Other (SWD or Enhr?) _____ Docket No. _____
11/30/07 1/19/08 4/3/08
Spud Date or Recompletion Date Date Reached TD Completion Date or Recompletion Date

Drilling Fluid Management Plan API NH 102708
(Data must be collected from the Reserve Pit)
Chloride content 4000 ppm Fluid volume 1000 bbls
Dewatering method used EVAPORATION
Location of fluid disposal if hauled offsite: _____
Operator Name _____
Lease Name _____ License No. _____
Quarter _____ Sec. _____ Twp. _____ S. R. _____ E W
County _____ Docket No. _____

INSTRUCTIONS: An original and two copies of this form shall be filed with the Kansas Corporation Commission, 130 S. Market - Room 2078, Wichita, Kansas 67202, within 120 days of the spud date, recompletion, workover or conversion of a well. Rule 82-3-130, 82-3-106 and 82-3-107 apply. Information on side two of this form will be held confidential for a period of 12 months if requested in writing and submitted with the form (see rule 82-3-107 for confidentiality in excess of 12 months). One copy of all wireline logs and geologist well report shall be attached with this form. ALL CEMENTING TICKETS MUST BE ATTACHED. Submit CP-4 form with all plugged wells. Submit CP-111 form with all temporarily abandoned wells.

All requirements of the statutes, rules and regulations promulgated to regulate the oil and gas industry have been fully complied with and the statements herein are complete and correct to the best of my knowledge.

Signature Melissa Sturm
Title SR. OPERATIONS ASSISTANT Date 4/10/08

Subscribed and sworn to before me this 10th day of April, 2008.
Notary Public Kaye Dawn Rockel
Date Commission Expires 10/21/08

KCC Office Use ONLY
 Letter of Confidentiality Attached
If Denied, Yes Date: _____
 Wireline Log Received
 Geologist Report Received
 UIC Distribution

Operator Name EOG RESOURCES, INC. Lease Name S & S Well # 27 #1H

Sec. 27 Twp. 32 S.R. 36 East West County STEVENS

INSTRUCTIONS: Show important tops and base of formations penetrated. Detail all cores. Report all drill stem tests giving interval tested, time tool open and closed, flowing and shut-in pressures, whether shut-in pressure reached static level, hydrostatic pressures, bottom hole temperature, fluid recovery, and flow rates if gas to surface during test. Attach extra sheet if more space is needed. Attach copy of all Electric Wireline Logs surveyed. Attach final geological well site report.

Drill Stem Tests Taken (Attach Additional Sheets.) Yes No
 Samples Sent to Geological Survey Yes No
 Cores Taken Yes No
 Electric Log Run (Submit Copy.) Yes No
 List All E.Logs Run:
 NONE

Name	Formation (Top), Depth and Datums	
	Top	Datum
CHEROKEE	5150	-2082
ATOKA	5520	-2452
MORROW	5594	-2526
LOWER MORROW	5915	-2847

RECEIVED
 KANSAS CORPORATION COMMISSION
 SEP 09 2008
 CONSERVATION DIVISION
 WICHITA, KS

CASING RECORD New Used
 Report all strings set-conductor, surface, intermediate, production, etc.

Purpose of String	Size Hole Drilled	Size Casing Set (In O.D.)	Weight Lbs./FL	Setting Depth	Type of Cement	# Sacks Used	Type and Percent Additives
SURFACE	12 1/4"	9 5/8"	36#	1460'	MIDCON2-PP	300	SEE CMT TIX
					PREM PLUS	180	SEE CMT TIX
PRODUCTION	8 3/4"	4.5"	11.6#	9050'	50/50 POZ	1170	SEE CMT TIX

ADDITIONAL CEMENTING/SQUEEZE RECORD

Purpose	Depth Top Bottom	Type of Cement	#Sacks Used	Type and Percent Additives
<input type="checkbox"/> Perforate <input type="checkbox"/> Protect Casing <input type="checkbox"/> Plug Back TD <input type="checkbox"/> Plug Off Zone				

Shots Per Foot	PERFORATION RECORD - Bridge Plugs Set/Type Specify Footage of Each Interval Perforated	Acid, Fracture, Shot, Cement Squeeze Record (Amount and Kind of Material Used)	Depth
4	7750' - 8100'	TOTAL FRAC: 400M# 30/70 SD, 3MG	7750-8100
	8320' - 8650'	7 1/2% FE ACID, 78.3MG 20# LINEAR	8320-8650
	8758' - 8992'	GEL WTR/CLAY FIX II, 338MG TREATED	8758-8992
		SLICKWATER/CLAY FIX II	

TUBING RECORD Size 2 3/8" Set At 5441' Packer At _____ Liner Run Yes No

Date of First, Resumed Production, SWD or Enhr. 4/3/08 Producing Method Flowing Pumping Gas Lift Other (Explain)

Estimated Production Per 24 Hours	Oil Bbls.	Gas Mcf	Water Bbls.	Gas-Oil Ratio	Gravity
	180	54	110	300	43.12

Disposition of Gas: _____ METHOD OF COMPLETION _____ Production Interval _____
 Vented Sold Used on Lease Open Hole Perforation Dually Comp. Commingled
 (If vented, submit ACO-18.) Other (Specify) _____

1002 A Well Name : S&S 27 #1H		
FORMATION	TOP	DATUM
CHEROKEE	5150	-2082
ATOKA	5520	-2452
MORROW	5594	-2526
LOWER MORROW	5915	-2847

CONFIDENTIAL

RECEIVED
 KANSAS CORPORATION COMMISSION
 SEP 09 2008
 CONSERVATION DIVISION
 WICHITA, KS

RECEIVED
KANSAS CORPORATION COMMISSION

SEP 09 2008

HALLIBURTON

CONSERVATION DIVISION
WICHITA, KS

Cementing Job Summary

The Road to Excellence Starts with Safety

Sold To #: 348223	Ship To #: 2615927	Quote #:	Sales Order #: 5532712
Customer: EOG RESOURCES INC EBUSINESS		Customer Rep: BROCK, GARY	
Well Name: S & S	Well #: 27-1H	API/UWI #:	
Field:	City (SAP): UNKNOWN	County/Parish: Stevens	State: Kansas
Legal Description: Section 27 Township 32S Range 36W			
Contractor: ABERCROMBIE		Rig/Platform Name/Num: 5	
Job Purpose: Cement Surface Casing			
Well Type: Development Well		Job Type: Cement Surface Casing	
Sales Person: BLAKEY, JOSEPH		Srvc Supervisor: DEETZ, DONALD	MBU ID Emp #: 389855

Job Personnel

HES Emp Name	Exp Hrs	Emp #	HES Emp Name	Exp Hrs	Emp #	HES Emp Name	Exp Hrs	Emp #
CARRILLO, EDUARDO Carrillo	15.0	371263	DEETZ, DONALD E	15.0	389855	EVANS, JOSHUA Allen	8.0	427571

Equipment

HES Unit #	Distance-1 way	HES Unit #	Distance-1 way	HES Unit #	Distance-1 way	HES Unit #	Distance-1 way
10010921C	30 mile	10240236	30 mile	10243558	30 mile	10244148	30 mile
10949718	30 mile	6612	30 mile	75819	30 mile		

Job Hours

Date	On Location Hours	Operating Hours	Date	On Location Hours	Operating Hours	Date	On Location Hours	Operating Hours
12/1/07	10.5	2.5	12/2/07	4.5	1.0			
TOTAL			<i>Total is the sum of each column separately</i>					

Job

Job Times

Formation Name	Formation Depth (MD) Top	Bottom	Called Out	Date	Time	Time Zone
Form Type		BHST	On Location	01 - Dec - 2007	11:00	CST
Job depth MD	1480. ft	Job Depth TVD	Job Started	01 - Dec - 2007	13:30	CST
Water Depth		Wk Hit Above Floor	Job Completed	01 - Dec - 2007	22:41	CST
Perforation Depth (MD) From		To	Departed Loc	02 - Dec - 2007	00:10	CST
				02 - Dec - 2007	04:30	CST

Well Data

Description	New / Used	Max pressure psig	Size in	ID in	Weight lbm/ft	Thread	Grade	Top MD ft	Bottom MD ft	Top TVD ft	Bottom TVD ft
Surface Open Hole				12.25					1700.		
Surface Casing	Used		9.625	8.921	36.				1700.		

Sales/Rental/3rd Party (HES)

Description	Qty	Qty uom	Depth	Supplier
SHOE, CSG, TIGER TOOTH, 9-5/8 BRD	1	EA		
V ASSY, INSR FLOAT, 9 5/8 LG, BRD, F/ USE	1	EA		
FILLUP ASSY - 1.500 ID - 9-5/8 &	1	EA		
CENTRALIZER-9-5/8"-CSG-12 1/4"-HINGED	0	EA		
COLLAR-STOP-9 5/8"-W/DOGS	0	EA		
BASKET - CEMENT - 9-5/8 CSG X 12-1/4	0	EA		
PLUG, CMTG, TOP, 9 5/8, HWE, 8.16 MIN/9.06 MA	1	EA		

Tools and Accessories

Type	Size	Qty	Make	Depth	Type	Size	Qty	Make	Depth	Type	Size	Qty	Make
Guide Shoe	9 5/8	1	H	1460	Packer					Top Plug	9 5/8	1	H
Float Shoe					Bridge Plug					Bottom Plug			
Float Collar					Retainer					SSR plug set			
Insert Float	9 5/8	1	H	1416						Plug Container	9 5/8	1	H
Stage Tool										Centralizers			

HALLIBURTON

Cementing Job Summary

Miscellaneous Materials											
Gelling Agt	Conc	Surfactant	Conc	Acid Type	Qty	Conc	%	Treatment Fld	Conc	Inhibitor	Conc
Fluid Data											
Stage/Plug #: 1											
Fluid #	Stage Type	Fluid Name	Qty	Qty uom	Mixing Density lbm/gal	Yield ft ³ /sk	Mix Fluid Gal/sk	Rate bbl/min	Total Mix Fluid Gal/sk		
1	Water Spacer		20.00	bbbl	8.33	.0	.0	.0			
2	Lead Cement	MIDCON-2 CEMENT PREMIUM PLUS - SBM (15079)	300.0	sacks	11.4	2.96	18.14		18.14		
	3 %	CALCIUM CHLORIDE - HI TEST PELLET (100005053)									
	0.25 lbm	POLY-E-FLAKE (101216940)									
	0.1 %	WG-17, 50 LB SK (100003623)									
	18.138 Gal	FRESH WATER									
3	Tail Cement	CMT - PREMIUM PLUS CEMENT (100012205)	180.0	sacks	14.8	1.34	6.32		6.32		
	94 lbm	CMT - PREMIUM PLUS - CLASS C REG OR TYPE III, BULK (100012205)									
	6.324 Gal	FRESH WATER									
	2 %	CALCIUM CHLORIDE - HI TEST PELLET (100005053)									
	0.25 lbm	POLY-E-FLAKE (101216940)									
4	Displacement Fluid		129.00	bbbl	8.33	.0	.0	.0			
Calculated Values			Pressures			Volumes					
Displacement	109	Shut In: Instant		Lost Returns	0	Cement Slurry	201	Pad			
Top Of Cement	SURFACE	5 Min		Cement Returns	40	Actual Displacement	109	Treatment			
Frac Gradient		15 Min		Spacers	0	Load and Breakdown		Total Job	310		
Rates											
Circulating	5	Mixing	5	Displacement	5	Avg. Job	5				
Cement Left In Pipe	Amount	44 ft	Reason	Shoe Joint							
Frac Ring # 1 @	ID	Frac ring # 2 @	ID	Frac Ring # 3 @	ID	Frac Ring # 4 @	ID				
The Information Stated Herein Is Correct				Customer Representative Signature <i>J. Kay Bell</i>							

CONFIDENTIAL

RECEIVED
KANSAS CORPORATION COMMISSION
SEP 09 2003
CONSERVATION DIV.
WICHITA, KS

RECEIVED
KANSAS CORPORATION COMMISSION

MALIBUATION

SEP 09 2008

Cementing Job Log

CONSERVATION DIVISION
WICHITA, KS

The Road to Excellence Starts with Safety

Sold To #: 348223	Ship To #: 2615927	Quote #:	Sales Order #: 5532712
Customer: EOG RESOURCES INC EBUSINESS		Customer Rep: BROCK, GARY	
Well Name: S & S	Well #: 27-1H	API/UWI #:	
Field:	City (SAP): UNKNOWN	County/Parish: Stevens	State: Kansas
Legal Description: Section 27 Township 32S Range 36W			
Lat: N 0 deg. OR N 0 deg. 0 min. 0 secs.		Long: E 0 deg. OR E 0 deg. 0 min. 0 secs.	
Contractor: ABERCROMBIE	Rig/Platform Name/Num: 5		
Job Purpose: Cement Surface Casing		Ticket Amount:	
Well Type: Development Well	Job Type: Cement Surface Casing		
Sales Person: BLAKEY, JOSEPH	Srvc Supervisor: DEETZ, DONALD	MBU ID Emp #: 389855	

Activity Description	Date/Time	Cht #	Rate bbl/min	Volume bbl		Pressure psig		Comments
				Stage	Total	Tubing	Casing	
Arrive At Loc	12/01/2007 13:30							RIG WAS PULLING DRILL PIPE
Pre-Job Safety Meeting	12/01/2007 13:35							
Rig-Up Completed	12/01/2007 14:35							
Start In Hole	12/01/2007 18:45							
Casing on Bottom	12/01/2007 20:59							
Other	12/01/2007 21:00							CASING STUCK IN HOLE @ 1460 FT RIG CIRCULATED THRU SWEDGE
Circulate Well	12/01/2007 21:02							WITH RIG
Test Lines	12/01/2007 22:42							2000 PSI
Pump Lead Cement	12/01/2007 22:47		5		158		250.0	300 SKS @ 11.4
Pump Tail Cement	12/01/2007 23:10		5		43		300.0	180 SKS @ 14.8
Drop Plug	12/01/2007 23:19							GOT BACK 40 BBL CEMENT RETURNS
Pump Displacement	12/01/2007 23:20		5		109		100.0	RIG WATER PUMPED 69 BBL SLOWED TO 3 BBL MIN @ 89 BBL GONE STOPED WAITED 5 MIN PUMPED 10 MORE BBL SHUT DOWN FOR 8 MIN PUMPED LAST 10 BBL

CONFIDENTIAL

Sold To #: 348223

Ship To #: 2615927

Quote #:

Sales Order #:

5532712

SUMMIT Version: 7.20.130

Sunday, December 02, 2007 12:37:00

HALLIBURTON

Cementing Job Log

Activity Description	Date/Time	Cht #	Rate bbl/min	Volume bbl		Pressure psig		Comments
				Stage	Total	Tubing	Casing	
Bump Plug	12/02/2007 00:07							BUMPED PLUG @ 350 TOOK TO 1000 PSI CHECKED FLOATS DID NOT HOLD LANDED PLUG A 2ND TIME CHECKED FLOATS AGAIN STILL DIDNT HOLD SHUT IN FOR 4 HRS
End Job	12/02/2007 00:10							THANKS FOR CALLING HALLIBURTON ERIC & CREW
Post-Job Safety Meeting (Pre Rig-Down)	12/02/2007 00:15							

CONFIDENTIAL

RECEIVED
KANSAS CORPORATION CONSERVATION

SEP 09 2008

CONSERVATION DIVISION
WICHITA, KS

Sold To # : 348223

Ship To # : 2615927

Quote # :

Sales Order # :

5532712

SUMMIT Version: 7.20.130

Sunday, December 02, 2007 12:37:00

RECEIVED
KANSAS CORPORATION COMMISSION

SEP 09 2008

HALLIBURTON

CONSERVATION DIVISION
WICHITA, KS

Cementing Job Summary

The Road to Excellence Starts with Safety

Sold To #: 348223	Shlp To #: 2615927	Quote #:	Sales Order #: 5558191
Customer: EOG RESOURCES INC EBUSINESS		Customer Rep: BROCK, GARY	
Well Name: S & S		Well #: 27 1H	API/UWI #:
Field:	City (SAP): UNKNOWN	County/Parish: Stevens	State: Kansas
Contractor: ABERCROMBIE		Rig/Platform Name/Num: 5	
Job Purpose: Cement Production Casing			
Well Type: Development Well		Job Type: Cement Production Casing	
Sales Person: BLAKEY, JOSEPH		Srvc Supervisor: DEETZ, DONALD	MBU ID Emp #: 389855

Job Personnel

HES Emp Name	Exp Hrs	Emp #	HES Emp Name	Exp Hrs	Emp #	HES Emp Name	Exp Hrs	Emp #
BERUMEN, EDUARDO	11.0	287804	CARRILLO, EDUARDO Carrillo	11.0	371263	DEETZ, DONALD E	11.0	389855
GREEN, SCOTT Anthony	9.0	301261						

Equipment

HES Unit #	Distance-1 way	HES Unit #	Distance-1 way	HES Unit #	Distance-1 way	HES Unit #	Distance-1 way
10010921C	50 mile	10240236	50 mile	10717476	50 mile	10949718	50 mile
54218	50 mile	6612	50 mile				

Job Hours

Date	On Location Hours	Operating Hours	Date	On Location Hours	Operating Hours	Date	On Location Hours	Operating Hours
1/20/08	11	4						
TOTAL			Total is the sum of each column separately					

Job

Job Times

Formation Name	Formation Depth (MD)	Top	Bottom	Called Out	Date	Time	Time Zone
				On Location	20 - Jan - 2008	07:00	CST
Form Type			BHST	Job Started	20 - Jan - 2008	10:30	CST
Job depth MD	9053. ft		Job Depth TVD	Job Started	20 - Jan - 2008	17:09	CST
Water Depth			Wk Ht Above Floor	Job Completed	20 - Jan - 2008	18:45	CST
Perforation Depth (MD)	From		To	Job Completed	20 - Jan - 2008	18:45	CST
				Departed Loc	20 - Jan - 2008	21:30	CST

Well Data

Description	New / Used	Max pressure psig	Size in	ID in	Weight lbm/ft	Thread	Grade	Top MD ft	Bottom MD ft	Top TVD ft	Bottom TVD ft
Surface Casing	Used		9.625	8.921	36.				1700.		
Production Open Hole				8.75				1700.	9117.	1700.	6035.
Production Casing	Used		4.5	4.	11.6		N-80		9117.		6035.

CONFIDENTIAL

Sales/Rental/3rd Party (HES)

Description	Qty	Qty uom	Depth	Supplier
SHOE-FLT- 4 1/2 8RD - HI-PORT	1	EA		
CLR,FLT,4-1/2 8RD,9.5-13.5PPF,2-3/4	1	EA		
KIT,HALL WELD-A	2	EA		
CLAMP - LIMIT - 7 - HINGED -	1	EA		
PLUG ASSY 4-1/2 OMEGA HWE 4.50 OD X 15.6	1	EA		

Tools and Accessories

Type	Size	Qty	Make	Depth	Type	Size	Qty	Make	Depth	Type	Size	Qty	Make
Guide Shoe					Packer					Top Plug	4 1/2	1	H
Float Shoe	4 1/2	1	H	9053	Bridge Plug					Bottom Plug			
Float Collar	4 1/2	1	H	9008	Retainer					SSR plug set			
Insert Float										Plug Container	4 1/2	1	H
Stage Tool										Centralizers			

HALLIBURTON

Cementing Job Summary

Gelling Agt		Conc		Surfactant		Conc		Acid Type		Qty		Conc		%	
Treatment Fld		Conc		Inhibitor		Conc		Sand Type		Size		Qty			
Miscellaneous Materials															
Fluid Data															
Stage/Plug #: 1															
Fluid #	Stage Type	Fluid Name	Qty	Qty uom	Mixing Density lbm/gal	Yield ft ³ /sk	Mix Fluid Gal/sk	Rate bbl/min	Total Mix Fluid Gal/sk						
1	MUD FLUSH II	MUD FLUSH II - SBM (508007)	50.00	bbbl	8.4	.0	.0	.0							
2	Lead Cement	POZ PREMIUM 50/50 - SBM (12302)	1170.0	sacks	13.9	1.47	6.26		6.26						
	6.259 Gal	FRESH WATER													
	10 %	CAL-SEAL 60, 50 LB BAG (101217146)													
	0.6 %	HALAD(R)-344, 50 LB (100003670)													
	0.5 %	D-AIR 3000 (101007446)													
	0.2 %	CFR-3, W/O DEFOAMER, 50 LB SK (100003653)													
	5 lbm	GILSONITE, BULK (100003700)													
3	Displacement with 1# sugar/bbl		50.00	bbbl	8.33	.0	.0	.0							
	1 lbm/bbl	SUGAR - GRANULATED, 10 LB BAG (101507884)													
4	Displacement Fluid		89.00	bbbl	8.33	.0	.0	.0							
5	15ex Rat & 15ex Mouse	POZ PREMIUM 50/50 - SBM (12302)	30.0	sacks	13.9	1.47	6.26		6.26						
	6.259 Gal	FRESH WATER													
	10 %	CAL-SEAL 60, 50 LB BAG (101217146)													
	0.6 %	HALAD(R)-344, 50 LB (100003670)													
	0.5 %	D-AIR 3000 (101007446)													
	0.2 %	CFR-3, W/O DEFOAMER, 50 LB SK (100003653)													
	5 lbm	GILSONITE, BULK (100003700)													
Calculated Values			Pressures			Volumes									
Displacement	139	Shut In: Instant	Lost Returns	0	Cement Slurry	306	Pad								
Top Of Cement		5 Min	Cement Returns	0	Actual Displacement	139	Treatment								
Frac Gradient		15 Min	Spacers	50	Load and Breakdown		Total Job	495							
Rates															
Circulating	6	Mixing	7	Displacement	8	Avg. Job	7								
Cement Left In Pipe	Amount	45 ft	Reason	Shoe Joint											
Frac Ring # 1 @	ID	Frac ring # 2 @	ID	Frac Ring # 3 @	ID	Frac Ring # 4 @	ID								
The Information Stated Herein Is Correct				Customer Representative Signature <i>Dale Passig</i>											

CONFIDENTIAL

RECEIVED
 KANSAS CORPORATION COMMISSION
 SEP 09 2008
 CONSERVATION DIVISION
 WICHITA, KS

RECEIVED
KANSAS CORPORATION COMMISSION

SEP 09 2008

CONSERVATION DIVISION
WICHITA, KS

HALLIBURTON

Cementing Job Log

The Road to Excellence Starts with Safety

Sold To #: 348223	Ship To #: 2615927	Quote #:	Sales Order #: 5558191
Customer: EOG RESOURCES INC EBUSINESS		Customer Rep: BROCK, GARY	
Well Name: S & S	Well #: 27 1H	API/UWI #:	
Field:	City (SAP): UNKNOWN	County/Parish: Stevens	State: Kansas
Legal Description:			
Lat:		Long:	
Contractor: ABERCROMBIE	Rig/Platform Name/Num: 5		
Job Purpose: Cement Production Casing			Ticket Amount:
Well Type: Development Well	Job Type: Cement Production Casing		
Sales Person: BLAKEY, JOSEPH	Srvc Supervisor: DEETZ, DONALD	MBU ID Emp #: 389855	

Activity Description	Date/Time	Cht #	Rate bbl/min	Volume bbl		Pressure psig		Comments
				Stage	Total	Tubing	Casing	
Arrive At Loc	01/20/2008 10:30							RIG WAS RUNNING CASING
Pre-Job Safety Meeting	01/20/2008 10:35							
Rig-Up Completed	01/20/2008 11:35							
Casing on Bottom	01/20/2008 14:15							LEFT TWO JOINTS OUT PUT ON HEAD CIRCULATED WITH RIG
Circulate Well	01/20/2008 14:30							WITH RIG
Test Lines	01/20/2008 17:10							TESTED LINES TO 5200
Pump Spacer 1	01/20/2008 17:11		7		50		1100.0	MUD FLUSH
Pump Cement	01/20/2008 17:20		7		306		750.0	1170 SKS @ 13.9
Clean Lines	01/20/2008 18:14							TO PIT
Drop Plug	01/20/2008 18:15							OMEGA PLUG
Pump Displacement	01/20/2008 18:17		8		139		1250.0	slowed rate last 10 bbl @ 2 bbl a min
Bump Plug	01/20/2008 18:44							BUMP PLUG @ 1000 TOOK TO 2000 BLEED OFF PSI CHECKED FLOATS OK
End Job	01/20/2008 18:45							THANKS FOR CALLING HALLIBURTON ERIC & CREW
Post-Job Safety Meeting (Pre Rig-Down)	01/20/2008 18:50							

CONFIDENTIAL

Sold To #: 348223

Ship To #: 2615927

Quote #:

Sales Order #:

5558191

SUMMIT Version: 7.20.130

Sunday, January 20, 2008 07:08:00

Scientific Drilling International Planning Report

SEP 09 2008

CONSERVATION DIVISION

Company: E.O.G. RESOURCES		Date: 10/8/2007		Time: 15:51:32	
Field: Stevens County Kansas		Co-ordinate(NE) Reference: Well: S&S 27 1H, Grid North		Vertical (TVD) Reference: SITE 3089.0	
Site: Section 27 - 32S - 36W		Section (VS) Reference: Well (0.00N,0.00E,41.57Azi)		Plan #4	
Well: S&S 27 1H		Plan:			
Wellpath: Original Wellpath					

WICHITA, KS
Page: 1

Field: Stevens County Kansas Stevens County Kansas		Map System: US State Plane Coordinate System 1827		Map Zone: Kansas, Southern Zone	
Geo Datum: NAD27 (Clarke 1868)		Coordinate System: Well Centre			
Sys Datum: Mean Sea Level		Geomagnetic Model: lgrf2005			

Site: Section 27 - 32S - 36W Stevens County Kansas Section 27 - 32S - 36W					
Site Position:	Northing: 218340.00 ft	Latitude: 37 14 4.389 N			
From: Map	Easting: 1207775.00 ft	Longitude: 101 13 17.332 W			
Position Uncertainty: 0.0 ft		North Reference: Grid			
Ground Level: 0.0 ft		Grid Convergence: -1.67 deg			

Well: S&S 27 1H S&S 27 1H		Slot Name:			
Well Position: +N-S 0.0 ft	Northing: 218340.00 ft	Latitude: 37 14 4.389 N			
+E-W 0.0 ft	Easting: 1207775.00 ft	Longitude: 101 13 17.332 W			
Position Uncertainty: 0.0 ft					

Wellpath: Original Wellpath		Drilled From: Surface	
Original Wellpath of S&S 27 1H		Tie-on Depth: 0.0 ft	
Current Datum: SITE	Height: 3089.0 ft	Above System Datum: Mean Sea Level	
Magnetic Data: 8/16/2007		Declination: 7.15 deg	
Field Strength: 52234 nT		Mag Dip Angle: 65.14 deg	
Vertical Section: Depth From (TVD)	+N-S	+E-W	Direction
ft	ft	ft	deg
0.0	0.0	0.0	41.57

Plan: Plan #4	Date Composed: 8/16/2007
Plan #4 S&S 27 1H	Version: 1
Principal: Yes	Tied-to: From Surface

Plan Section Information											
MD	Incl	Azim	TVD	+N-S	+E-W	DLS	Build	Turn	TFO	Target	
ft	deg	deg	ft	ft	ft	deg/100ft	deg/100ft	deg/100ft	deg		
0.0	0.00	41.57	0.0	0.0	0.0	0.00	0.00	0.00	0.00	0.00	
5370.0	0.00	41.57	5370.0	0.0	0.0	0.00	0.00	0.00	41.57		
6083.9	71.39	41.57	5913.0	291.8	258.9	10.00	10.00	0.00	0.00		
6303.8	71.39	41.57	5883.2	447.8	397.1	0.00	0.00	0.00	0.00		
6477.1	88.72	41.57	6013.0	575.0	510.0	10.00	10.00	0.00	0.00		
7956.1	88.72	41.57	6046.0	1681.2	1491.2	0.00	0.00	0.00	0.00		
8018.2	90.58	41.57	6046.4	1727.6	1532.3	3.00	3.00	0.00	-0.05		
8839.9	90.58	41.57	6038.0	2342.4	2077.6	0.00	0.00	0.00	0.00		
9117.4	90.58	41.57	6035.2	2550.0	2261.7	0.00	0.00	0.00	0.00		

Section 1 : Start Hold											
MD	Incl	Azim	TVD	+N-S	+E-W	VS	DLS	Build	Turn	TFO	
ft	deg	deg	ft	ft	ft	ft	deg/100ft	deg/100ft	deg/100ft	deg	
0.0	0.00	41.57	0.0	0.0	0.0	0.0	0.00	0.00	0.00	0.00	
5370.0	0.00	41.57	5370.0	0.0	0.0	0.0	0.00	0.00	0.00	41.57	

Section 2 : Start Build 10.00											
MD	Incl	Azim	TVD	+N-S	+E-W	VS	DLS	Build	Turn	TFO	
ft	deg	deg	ft	ft	ft	ft	deg/100ft	deg/100ft	deg/100ft	deg	
5400.0	3.00	41.57	5400.0	0.6	0.5	0.8	10.00	10.00	0.00	0.00	
5450.0	8.00	41.57	5449.7	4.2	3.7	5.8	10.00	10.00	0.00	0.00	
5500.0	13.00	41.57	5498.9	11.0	9.7	14.7	10.00	10.00	0.00	0.00	
5550.0	18.00	41.57	5547.1	21.0	18.6	28.0	10.00	10.00	0.00	0.00	
5600.0	23.00	41.57	5593.9	34.1	30.2	45.5	10.00	10.00	0.00	0.00	
5650.0	28.00	41.57	5639.0	50.2	44.5	67.1	10.00	10.00	0.00	0.00	
5700.0	33.00	41.57	5682.1	69.2	61.3	92.4	10.00	10.00	0.00	0.00	
5750.0	38.00	41.57	5722.7	90.9	80.6	121.5	10.00	10.00	0.00	0.00	

CONFIDENTIAL

Scientific Drilling International Planning Report

SEP 09 2008

Company: E.O.G. RESOURCES	Date: 10/8/2007	Time: 15:51:32	CONSERVATION DIVISION
Field: Stevens County Kansas	Co-ordinate(NE) Reference: Well: S&S 27 1H, Grid North		WICHITA, KS
Site: Section 27 - 32S - 36W	Vertical (TVD) Reference: SITE 3089.0		
Well: S&S 27 1H	Section (VS) Reference: Well (0.00N,0.00E,41.57Azi)		
Wellpath: Original Wellpath	Plan: Plan #4		

Section 2 : Start Build 10.00

MD ft	Incl deg	Azim deg	TVD ft	+N/-S ft	+E/-W ft	VS ft	DLS deg/100ft	Build deg/100ft	Turn deg/100ft	TFO deg
5800.0	43.00	41.57	5760.8	115.2	102.1	153.9	10.00	10.00	0.00	0.00
5850.0	48.00	41.57	5795.8	141.8	125.8	189.6	10.00	10.00	0.00	0.00
5900.0	53.00	41.57	5827.6	170.7	151.4	228.1	10.00	10.00	0.00	0.00
5950.0	58.00	41.57	5855.9	201.5	178.7	269.3	10.00	10.00	0.00	0.00
6000.0	63.00	41.57	5880.5	234.0	207.6	312.8	10.00	10.00	0.00	0.00
6050.0	68.00	41.57	5901.2	268.1	237.8	358.3	10.00	10.00	0.00	0.00
6083.9	71.39	41.57	5913.0	291.8	258.9	390.1	10.00	10.00	0.00	0.00

Section 3 : Start Hold

MD ft	Incl deg	Azim deg	TVD ft	+N/-S ft	+E/-W ft	VS ft	DLS deg/100ft	Build deg/100ft	Turn deg/100ft	TFO deg
6100.0	71.39	41.57	5918.1	303.3	269.0	405.4	0.00	0.00	0.00	0.00
6200.0	71.39	41.57	5950.1	374.2	331.9	500.1	0.00	0.00	0.00	0.00
6303.8	71.39	41.57	5983.2	447.8	397.1	598.5	0.00	0.00	0.00	0.00

Section 4 : Start DLS 10.00 TFO 0.00

MD ft	Incl deg	Azim deg	TVD ft	+N/-S ft	+E/-W ft	VS ft	DLS deg/100ft	Build deg/100ft	Turn deg/100ft	TFO deg
6350.0	76.01	41.57	5996.1	480.9	428.6	642.8	10.00	10.00	0.00	0.00
6400.0	81.01	41.57	6008.1	517.6	459.1	691.8	10.00	10.00	0.00	0.00
6450.0	86.01	41.57	6011.8	554.7	492.0	741.5	10.00	10.00	0.00	0.00
6477.1	88.72	41.57	6013.0	575.0	510.0	788.6	10.00	10.00	0.00	0.00

Section 5 : Start Hold

MD ft	Incl deg	Azim deg	TVD ft	+N/-S ft	+E/-W ft	VS ft	DLS deg/100ft	Build deg/100ft	Turn deg/100ft	TFO deg
6500.0	88.72	41.57	6013.5	592.1	525.2	791.5	0.00	0.00	0.00	0.00
6600.0	88.72	41.57	6015.7	688.9	591.5	891.4	0.00	0.00	0.00	0.00
6700.0	88.72	41.57	6018.0	741.7	657.9	991.4	0.00	0.00	0.00	0.00
6800.0	88.72	41.57	6020.2	818.5	724.2	1091.4	0.00	0.00	0.00	0.00
6900.0	88.72	41.57	6022.4	891.3	790.5	1191.4	0.00	0.00	0.00	0.00
7000.0	88.72	41.57	6024.7	966.1	858.9	1291.3	0.00	0.00	0.00	0.00
7100.0	88.72	41.57	6026.9	1040.9	923.2	1391.3	0.00	0.00	0.00	0.00
7200.0	88.72	41.57	6029.1	1115.7	989.5	1491.3	0.00	0.00	0.00	0.00
7300.0	88.72	41.57	6031.4	1190.5	1055.9	1591.3	0.00	0.00	0.00	0.00
7400.0	88.72	41.57	6033.6	1265.3	1122.2	1691.2	0.00	0.00	0.00	0.00
7500.0	88.72	41.57	6035.8	1340.0	1188.6	1791.2	0.00	0.00	0.00	0.00
7600.0	88.72	41.57	6038.1	1414.8	1254.9	1891.2	0.00	0.00	0.00	0.00
7700.0	88.72	41.57	6040.3	1489.6	1321.2	1991.2	0.00	0.00	0.00	0.00
7800.0	88.72	41.57	6042.5	1564.4	1387.6	2091.1	0.00	0.00	0.00	0.00
7900.0	88.72	41.57	6044.7	1639.2	1453.9	2191.1	0.00	0.00	0.00	0.00
7956.1	88.72	41.57	6046.0	1881.2	1491.2	2247.2	0.00	0.00	0.00	0.00

Section 6 : Start DLS 3.00 TFO -0.05

MD ft	Incl deg	Azim deg	TVD ft	+N/-S ft	+E/-W ft	VS ft	DLS deg/100ft	Build deg/100ft	Turn deg/100ft	TFO deg
8000.0	90.04	41.57	6046.5	1714.0	1520.3	2291.1	3.00	3.00	0.00	-0.05
8018.2	90.58	41.57	6046.4	1727.6	1532.3	2309.3	3.00	3.00	0.00	-0.05

CONFIDENTIAL

Section 7 : Start Hold

MD ft	Incl deg	Azim deg	TVD ft	+N/-S ft	+E/-W ft	VS ft	DLS deg/100ft	Build deg/100ft	Turn deg/100ft	TFO deg
8100.0	90.58	41.57	6045.5	1788.8	1586.6	2391.1	0.00	0.00	0.00	0.00
8200.0	90.58	41.57	6044.5	1863.6	1653.0	2491.1	0.00	0.00	0.00	0.00
8300.0	90.58	41.57	6043.5	1938.5	1719.3	2591.1	0.00	0.00	0.00	0.00
8400.0	90.58	41.57	6042.5	2013.3	1785.7	2691.1	0.00	0.00	0.00	0.00
8500.0	90.58	41.57	6041.5	2088.1	1852.0	2791.1	0.00	0.00	0.00	0.00
8600.0	90.58	41.57	6040.4	2162.9	1918.4	2891.1	0.00	0.00	0.00	0.00
8700.0	90.58	41.57	6039.4	2237.7	1984.7	2991.1	0.00	0.00	0.00	0.00

Scientific Drilling International Planning Report

Company: E.O.G. RESOURCES Field: Stevens County Kansas Site: Section 27 - 32S - 36W Well: S&S 27 1H Wellpath: Original Wellpath	Date: 10/8/2007 Co-ordinate(NE) Reference: Well: S&S 27 1H, Grid North Vertical (TVD) Reference: SITE 3069.0 Section (VS) Reference: Well (0.00N,0.00E,41.57Azi) Plan: Plan #4
--	---

Section 7 : Start Hold

MD ft	Incl deg	Azim deg	TVD ft	+N/-S ft	+E/-W ft	VS ft	DLS deg/100ft	Build deg/100ft	Turn deg/100ft	TFO deg
8800.0	90.58	41.57	8038.4	2312.5	2051.1	3091.0	0.00	0.00	0.00	0.00
8839.9	90.58	41.57	8038.0	2342.4	2077.6	3131.0	0.00	0.00	0.00	0.00

Section 8 : Start Hold

MD ft	Incl deg	Azim deg	TVD ft	+N/-S ft	+E/-W ft	VS ft	DLS deg/100ft	Build deg/100ft	Turn deg/100ft	TFO deg
8800.0	90.58	41.57	8037.4	2387.3	2117.4	3191.0	0.00	0.00	0.00	0.00
9000.0	90.58	41.57	8036.4	2462.1	2183.8	3291.0	0.00	0.00	0.00	0.00
9100.0	90.58	41.57	8035.3	2536.9	2250.1	3391.0	0.00	0.00	0.00	0.00
9117.4	90.58	41.57	8035.2	2550.0	2281.7	3408.5	0.00	0.00	0.00	0.00

Survey

MD ft	Incl deg	Azim deg	TVD ft	+N/-S ft	+E/-W ft	VS ft	DLS deg/100ft	Build deg/100ft	Turn deg/100ft	Tool/Comment
5370.0	0.00	41.57	5370.0	0.0	0.0	0.0	0.00	0.00	0.00	
5400.0	3.00	41.57	5400.0	0.6	0.5	0.8	10.00	10.00	0.00	
5450.0	8.00	41.57	5449.7	4.2	3.7	5.6	10.00	10.00	0.00	
5500.0	13.00	41.57	5498.9	11.0	9.7	14.7	10.00	10.00	0.00	
5550.0	18.00	41.57	5547.1	21.0	18.6	28.0	10.00	10.00	0.00	
5600.0	23.00	41.57	5593.9	34.1	30.2	45.5	10.00	10.00	0.00	
5650.0	28.00	41.57	5639.0	50.2	44.5	67.1	10.00	10.00	0.00	
5700.0	33.00	41.57	5682.1	69.2	61.3	92.4	10.00	10.00	0.00	
5750.0	38.00	41.57	5722.7	90.9	80.6	121.5	10.00	10.00	0.00	
5800.0	43.00	41.57	5760.8	115.2	102.1	153.9	10.00	10.00	0.00	
5850.0	48.00	41.57	5795.8	141.8	125.8	189.6	10.00	10.00	0.00	
5900.0	53.00	41.57	5827.6	170.7	151.4	228.1	10.00	10.00	0.00	
5950.0	58.00	41.57	5855.9	201.5	178.7	269.3	10.00	10.00	0.00	
6000.0	63.00	41.57	5880.5	234.0	207.6	312.8	10.00	10.00	0.00	
6050.0	68.00	41.57	5901.2	268.1	237.8	358.3	10.00	10.00	0.00	
6083.9	71.39	41.57	5913.0	291.8	258.9	390.1	10.00	10.00	0.00	
6100.0	71.39	41.57	5918.1	303.3	269.0	405.4	0.00	0.00	0.00	
6200.0	71.39	41.57	5950.1	374.2	331.9	500.1	0.00	0.00	0.00	
6303.8	71.39	41.57	5983.2	447.8	397.1	598.5	0.00	0.00	0.00	
6350.0	76.01	41.57	5996.1	480.9	426.6	642.8	10.00	10.00	0.00	
6400.0	81.01	41.57	6006.1	517.6	459.1	691.8	10.00	10.00	0.00	
6450.0	85.01	41.57	6011.8	554.7	492.0	741.5	10.00	10.00	0.00	
6477.1	88.72	41.57	6013.0	575.0	510.0	768.6	10.00	10.00	0.00	
6500.0	88.72	41.57	6013.5	592.1	525.2	791.5	0.00	0.00	0.00	
6600.0	88.72	41.57	6015.7	666.9	591.5	891.4	0.00	0.00	0.00	
6700.0	88.72	41.57	6018.0	741.7	657.9	991.4	0.00	0.00	0.00	
6800.0	88.72	41.57	6020.2	816.5	724.2	1091.4	0.00	0.00	0.00	
6900.0	88.72	41.57	6022.4	891.3	790.5	1191.4	0.00	0.00	0.00	
7000.0	88.72	41.57	6024.7	966.1	856.9	1291.3	0.00	0.00	0.00	
7100.0	88.72	41.57	6026.9	1040.9	923.2	1391.3	0.00	0.00	0.00	
7200.0	88.72	41.57	6029.1	1115.7	989.5	1491.3	0.00	0.00	0.00	
7300.0	88.72	41.57	6031.4	1190.5	1055.9	1591.3	0.00	0.00	0.00	
7400.0	88.72	41.57	6033.6	1265.3	1122.2	1691.2	0.00	0.00	0.00	
7500.0	88.72	41.57	6035.8	1340.0	1188.6	1791.2	0.00	0.00	0.00	
7600.0	88.72	41.57	6038.1	1414.8	1254.9	1891.2	0.00	0.00	0.00	
7700.0	88.72	41.57	6040.3	1489.6	1321.2	1991.2	0.00	0.00	0.00	
7800.0	88.72	41.57	6042.5	1564.4	1387.6	2091.1	0.00	0.00	0.00	
7900.0	88.72	41.57	6044.7	1639.2	1453.9	2191.1	0.00	0.00	0.00	
7956.1	88.72	41.57	6046.0	1681.2	1491.2	2247.2	0.00	0.00	0.00	
8000.0	90.04	41.57	6046.5	1714.0	1520.3	2291.1	3.00	3.00	0.00	

RECEIVED
 KANSAS CORPORATION COMMISSION
 SEP 09 2008
 CONSERVATION DIVISION
 WICHITA, KS

CONFIDENTIAL

Scientific Drilling International Planning Report

Company: E.O.G. RESOURCES	Date: 10/8/2007	Time: 15:51:32	Page: 4
Field: Stevens County Kansas	Co-ordinate(NE) Reference: Well: S&S 27 1H, Grid North	Vertical (TVD) Reference: SITE 3069.0	
Site: Section 27 - 32S - 36W	Section (VS) Reference: Well (0.00N,0.00E,41.57Azi)	Plan #4	
Well: S&S 27 1H			
Wellpath: Original Wellpath			

Survey

MD ft	Incl deg	Azim deg	TVD ft	+N-S ft	+E-W ft	VS ft	DLS deg/100ft	Build deg/100ft	Turn deg/100ft	Tool/Comment
8018.2	90.58	41.57	6046.4	1727.8	1532.3	2309.3	3.00	3.00	0.00	
8100.0	90.58	41.57	6045.5	1788.8	1588.6	2391.1	0.00	0.00	0.00	
8200.0	90.58	41.57	6044.5	1863.8	1653.0	2491.1	0.00	0.00	0.00	
8300.0	90.58	41.57	6043.5	1938.5	1719.3	2591.1	0.00	0.00	0.00	
8400.0	90.58	41.57	6042.5	2013.3	1785.7	2691.1	0.00	0.00	0.00	
8500.0	90.58	41.57	6041.5	2088.1	1852.0	2791.1	0.00	0.00	0.00	
8600.0	90.58	41.57	6040.4	2162.9	1918.4	2891.1	0.00	0.00	0.00	
8700.0	90.58	41.57	6039.4	2237.7	1984.7	2991.1	0.00	0.00	0.00	
8800.0	90.58	41.57	6038.4	2312.5	2051.1	3091.0	0.00	0.00	0.00	
8839.9	90.58	41.57	6038.0	2342.4	2077.6	3131.0	0.00	0.00	0.00	
8900.0	90.58	41.57	6037.4	2387.3	2117.4	3191.0	0.00	0.00	0.00	
9000.0	90.58	41.57	6036.4	2462.1	2183.8	3291.0	0.00	0.00	0.00	
9100.0	90.58	41.57	6035.3	2536.9	2250.1	3391.0	0.00	0.00	0.00	
9117.4	90.58	41.57	6035.2	2550.0	2261.7	3408.5	0.00	0.00	0.00	

RECEIVED
 KANSAS CORPORATION
 SEP 09 2009
 CONSERVATION DIVISION
 WICHITA, KS

CONFIDENTIAL

SEP 09 2008

Scientific Drilling International

Lease Line Survey Report

CONSERVATION DIVISION
WICHITA, KS

Company: E.O.G. RESOURCES		Date: 10/8/2007		Time: 15:52:33		Page: 1	
Field: Stevens County Kansas		Co-ordinate(NE) Reference:		Well: S&S 27 1H, Grid North			
Site: Section 27 - 32S - 36W		Vertical (TVD) Reference:		SITE 3089.0			
Well: S&S 27 1H		Section (VS) Reference:		Well (0.00N,0.00E,41.57Azi)			
Wellpath: Original Wellpath		Survey Calculation Method:		Minimum Curvature		Db: Sybase	

Plan: Plan #4	Date Composed: 8/16/2007
Plan #4 S&S 27 1H	Version: 1
Principal: Yes	Tied-to: From Surface

Well: S&S 27 1H	Slot Name:		
S&S 27 1H			
Well Position:	+N/S 0.0 ft	Northing: 218340.00 ft	Latitude: 37 14 4.389 N
	+E/W 0.0 ft	Easting: 1207775.00 ft	Longitude: 101 13 17.332 W
Position Uncertainty:	0.0 ft		

Survey										
MD	Incl	Azim	TVD	N/S	E/W	PSL	FWL	Lat	Long	
ft	deg	deg	ft	ft	ft	ft	ft			
5370.0	0.00	41.57	5370.0	0.0	0.0	2400.0	2465.0	37 14	4.389	N101 13 17.332 W
5400.0	3.00	41.57	5400.0	0.6	0.5	2400.8	2465.5	37 14	4.395	N101 13 17.328 W
5450.0	8.00	41.57	5449.7	4.2	3.7	2404.2	2488.7	37 14	4.431	N101 13 17.288 W
5500.0	13.00	41.57	5498.9	11.0	9.7	2411.0	2474.7	37 14	4.500	N101 13 17.216 W
5550.0	18.00	41.57	5547.1	21.0	18.6	2421.0	2483.6	37 14	4.601	N101 13 17.110 W
5600.0	23.00	41.57	5593.9	34.1	30.2	2434.1	2495.2	37 14	4.734	N101 13 16.971 W
5650.0	28.00	41.57	5639.0	50.2	44.5	2450.2	2509.5	37 14	4.897	N101 13 16.800 W
5700.0	33.00	41.57	5682.1	69.2	61.3	2469.2	2526.3	37 14	5.090	N101 13 16.599 W
5750.0	38.00	41.57	5722.7	90.9	80.6	2490.9	2545.6	37 14	5.310	N101 13 16.369 W
5800.0	43.00	41.57	5760.8	115.2	102.1	2515.2	2587.1	37 14	5.556	N101 13 16.111 W
5850.0	48.00	41.57	5795.8	141.8	125.8	2541.8	2590.8	37 14	5.827	N101 13 15.829 W
5900.0	53.00	41.57	5827.6	170.7	151.4	2570.7	2616.4	37 14	6.119	N101 13 15.523 W
5950.0	58.00	41.57	5855.9	201.5	178.7	2601.5	2643.7	37 14	6.432	N101 13 15.196 W
6000.0	63.00	41.57	5880.5	234.0	207.6	2634.0	2672.6	37 14	6.762	N101 13 14.851 W
6050.0	68.00	41.57	5901.2	268.1	237.8	2668.1	2702.8	37 14	7.107	N101 13 14.490 W
6083.9	71.39	41.57	5913.0	291.8	258.9	2691.8	2723.9	37 14	7.348	N101 13 14.238 W
6100.0	71.39	41.57	5918.1	303.3	269.0	2703.3	2734.0	37 14	7.463	N101 13 14.117 W
6200.0	71.39	41.57	5950.1	374.2	331.9	2774.2	2796.9	37 14	8.182	N101 13 13.365 W
6303.8	71.39	41.57	5983.2	447.8	397.1	2847.8	2862.1	37 14	8.928	N101 13 12.585 W
6350.0	76.01	41.57	5996.1	480.9	426.6	2880.9	2891.6	37 14	9.265	N101 13 12.234 W
6400.0	81.01	41.57	6006.1	517.6	459.1	2917.6	2924.1	37 14	9.636	N101 13 11.845 W
6450.0	86.01	41.57	6011.8	554.7	492.0	2954.7	2957.0	37 14	10.013	N101 13 11.451 W
6477.1	86.72	41.57	6013.0	575.0	510.0	2975.0	2975.0	37 14	10.218	N101 13 11.236 W
6500.0	88.72	41.57	6013.5	592.1	525.2	2992.1	2990.2	37 14	10.392	N101 13 11.055 W
6600.0	88.72	41.57	6015.7	666.9	591.5	3066.9	3056.5	37 14	11.150	N101 13 10.262 W
6700.0	88.72	41.57	6018.0	741.7	657.9	3141.7	3122.9	37 14	11.909	N101 13 9.469 W
6800.0	88.72	41.57	6020.2	816.5	724.2	3216.5	3189.2	37 14	12.667	N101 13 8.676 W
6900.0	88.72	41.57	6022.4	891.3	790.5	3291.3	3255.5	37 14	13.425	N101 13 7.883 W
7000.0	88.72	41.57	6024.7	966.1	856.9	3366.1	3321.9	37 14	14.184	N101 13 7.090 W
7100.0	88.72	41.57	6026.9	1040.9	923.2	3440.9	3388.2	37 14	14.942	N101 13 6.297 W
7200.0	88.72	41.57	6029.1	1115.7	989.5	3515.7	3454.5	37 14	15.700	N101 13 5.504 W
7300.0	88.72	41.57	6031.4	1190.5	1055.9	3590.5	3520.9	37 14	16.458	N101 13 4.711 W
7400.0	88.72	41.57	6033.6	1265.3	1122.2	3665.3	3587.2	37 14	17.217	N101 13 3.918 W
7500.0	88.72	41.57	6035.8	1340.0	1188.6	3740.0	3653.6	37 14	17.975	N101 13 3.125 W
7600.0	88.72	41.57	6038.1	1414.8	1254.9	3814.8	3719.9	37 14	18.733	N101 13 2.332 W
7700.0	88.72	41.57	6040.3	1489.6	1321.2	3889.6	3786.2	37 14	19.492	N101 13 1.539 W
7800.0	88.72	41.57	6042.5	1564.4	1387.6	3964.4	3852.6	37 14	20.250	N101 13 0.746 W
7900.0	88.72	41.57	6044.7	1639.2	1453.9	4039.2	3918.9	37 14	21.008	N101 12 59.953 W
7956.1	88.72	41.57	6046.0	1681.2	1491.2	4081.2	3956.2	37 14	21.434	N101 12 59.507 W
8000.0	90.04	41.57	6048.5	1714.0	1520.3	4114.0	3985.3	37 14	21.767	N101 12 59.159 W
8018.2	90.58	41.57	6046.4	1727.6	1532.3	4127.6	3997.3	37 14	21.905	N101 12 59.015 W
8100.0	90.58	41.57	6045.5	1788.8	1586.6	4188.8	4051.6	37 14	22.525	N101 12 58.366 W
8200.0	90.58	41.57	6044.5	1863.6	1653.0	4263.6	4118.0	37 14	23.284	N101 12 57.573 W
8300.0	90.58	41.57	6043.5	1938.6	1719.3	4338.5	4184.3	37 14	24.042	N101 12 56.780 W
8400.0	90.58	41.57	6042.5	2013.3	1785.7	4413.3	4250.7	37 14	24.800	N101 12 55.987 W

CONFIDENTIAL

Scientific Drilling International

Lease Line Survey Report

Company: E.O.G. RESOURCES	Date: 10/8/2007	Time: 15:52:33	Page: 2
Field: Stevens County Kansas	Co-ordinate(NE) Reference: Well: S&S 27 1H, Grid North		
Site: Section 27 - 32S - 36W	Vertical (TVD) Reference: SITE 3069.0		
Well: S&S 27 1H	Section (VS) Reference: Well (0.00N,0.00E,41.57Azi)		
Wellpath: Original Wellpath	Survey Calculation Method: Minimum Curvature	Db: Sybase	

Survey

MD ft	Incl deg	Azim deg	TVD ft	N/S ft	E/W ft	FSL ft	FWL ft	Lat	Long			
8500.0	90.58	41.57	6041.5	2088.1	1852.0	4488.1	4317.0	37 14	25.559	N101	12	55.193 W
8600.0	90.58	41.57	6040.4	2162.9	1918.4	4562.9	4383.4	37 14	26.317	N101	12	54.400 W
8700.0	90.58	41.57	6039.4	2237.7	1984.7	4637.7	4449.7	37 14	27.076	N101	12	53.607 W
8800.0	90.58	41.57	6038.4	2312.5	2051.1	4712.5	4516.1	37 14	27.834	N101	12	52.814 W
8839.9	90.58	41.57	6038.0	2342.4	2077.6	4742.4	4542.6	37 14	28.137	N101	12	52.497 W
8900.0	90.58	41.57	6037.4	2387.3	2117.4	4787.3	4582.4	37 14	28.593	N101	12	52.021 W
9000.0	90.58	41.57	6036.4	2462.1	2183.8	4862.1	4648.8	37 14	29.351	N101	12	51.227 W
9100.0	90.58	41.57	6035.3	2538.9	2250.1	4936.9	4715.1	37 14	30.110	N101	12	50.434 W
9117.4	90.58	41.57	6035.2	2550.0	2261.7	4950.0	4726.7	37 14	30.242	N101	12	50.298 W

RECEIVED
 KANSAS CORPORATE
 SEP 09 2008
 CONSERVATION DIVISION
 WICHITA, KS

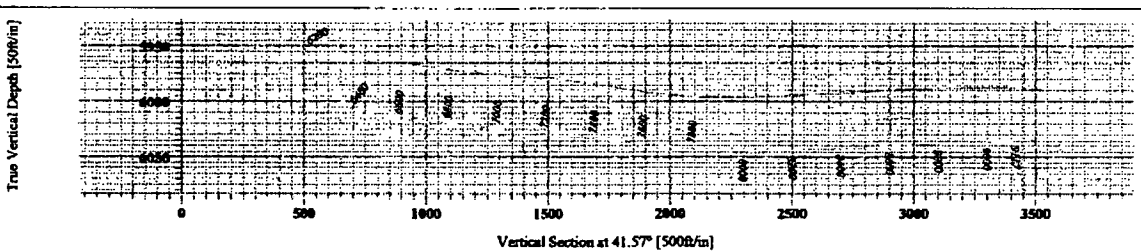
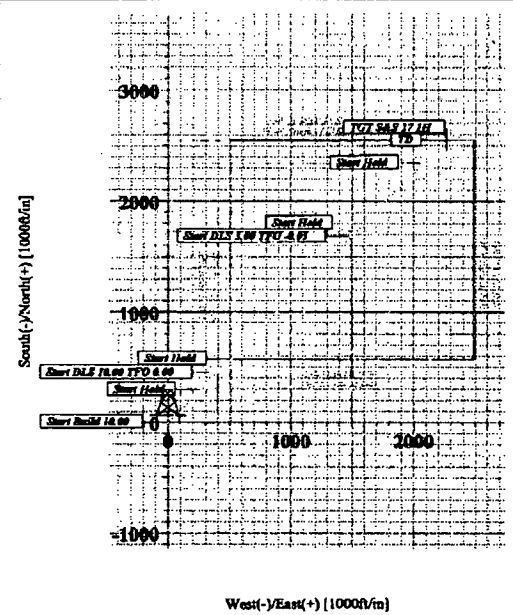
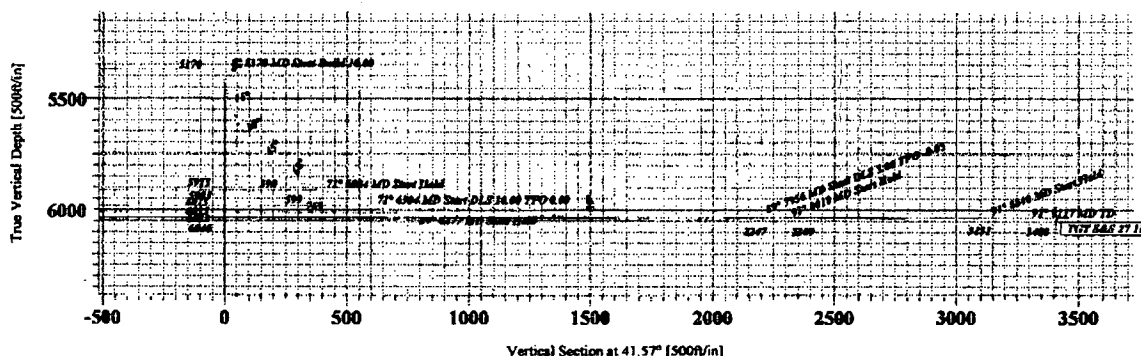
CONFIDENTIAL

eog resources
energy opportunity growth

E.O.G. RESOURCES
Field Office - Energy Services
200 - 20th Street, Suite 1000
Midland, TX 79701
Phone: (817) 424-1000
Fax: (817) 424-1001

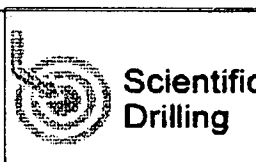


Approved by: [Signature]
Checked by: [Signature]
Drawn by: [Signature]
Scale: 1" = 1000'
Date: 08/20/08



SECTION DETAILS										
Seq	MD	hw	As	TYD	+N-S	+E-W	DLog	TFace	VSec	Target
1	0.0	0.00	41.37	0.0	0.0	0.0	0.00	0.00	0.0	
2	3378.0	0.00	41.37	5178.0	0.0	0.0	0.00	41.37	0.0	
3	4883.0	71.39	41.37	5913.0	291.8	232.9	16.00	0.00	390.7	
4	6388.0	71.39	41.37	5981.2	447.4	397.1	0.00	0.00	596.1	
5	6477.1	88.72	41.37	6012.0	373.0	318.8	16.00	0.00	762.6	
6	7956.1	88.72	41.37	6046.0	1681.2	1491.2	0.00	0.00	2347.2	
7	8018.2	98.58	41.37	6064.4	1737.4	1542.4	0.00	-0.01	1599.1	
8	8839.9	98.58	41.37	6082.0	3142.4	2077.6	0.00	0.00	3117.0	
9	9117.4	98.58	41.37	6081.2	2358.0	2241.7	0.00	0.00	3406.3	

TARGET DETAILS					
Name	TYD	-N-S	+E-W	Kerbang	Easting Shaps
TGT SAS 27 III	6011.2	2358.0	2241.7	230890.00	1310016.70



CONFIDENTIAL

RECEIVED
KANSAS CORPORATION COMMISSION
SEP 09 2008
CONSERVATION DIVISION
WICHITA, KS