

STATE OF KANSAS  
STATE CORPORATION COMMISSION  
200 Colorado Derby Building  
Wichita, Kansas 67202

WELL PLUGGING RECORD  
K.A.R.-82-3-117

15-065-01903-00-00

TYPE OR PRINT  
NOTICE: Fill out completely  
and return to Cons. Div.  
office within 30 days.

API NUMBER \_\_\_\_\_  
LEASE NAME Graff  
WELL NUMBER #1  
\_\_\_\_\_ Ft. from S Section Line  
\_\_\_\_\_ Ft. from E Section Line  
SEC. 6 TWP. 10 RGE. 25 (E) or (W)  
COUNTY Graham

LEASE OPERATOR Berexco, Inc.  
ADDRESS Box 723 Hays, Kansas 67601  
PHONE# (913) 628 6101 OPERATORS LICENSE NO. 5363

Date Well Completed 3-4-59  
Plugging Commenced 5-4-88  
Plugging Completed 5-4-88

Character of Well oil  
(Oil, Gas, D&A, SWD, Input, Water Supply Well)

The plugging proposal was approved on 5-4-88 (date)  
by Mr. Carl Goodrow (KCC District Agent's Name).

Is ACO-1 filed? \_\_\_\_\_ If not, is well log attached? Yes

Producing Formation \_\_\_\_\_ Depth to Top \_\_\_\_\_ Bottom \_\_\_\_\_ T.D. 4042

Show depth and thickness of all water, oil and gas formations.

OIL, GAS OR WATER RECORDS

CASING RECORD

Formation	Content	From	To	Size	Put in	Pulled out
	Surface	0	189	8 5/8		None
	Casing	0	4043	4 1/2		None

Describe in detail the manner in which the well was plugged, indicating where the mud fluid was placed and the method or methods used in introducing it into the hole. If cement or other plug were used, state the character of same and depth placed, from feet to feet each section.  
Hook up BJ Titan, bottom tbq. 3269.42'. Pump 25 sks. econolite with hulls. Got circulation. Pumped 50 sks. common/100# hulls. Displace to bottom. Cement circulated, TOH with tbq.. Put swedge in csg. Pumped 160 sks. econolite with hulls. Max. pressure 600#. Shut in holding 300#. Hook up to 8 5/8, pumped 15 sks. econolite. Max. pressure 500#. Shut in at 300#. Holding.  
(If additional description is necessary, use BACK of this form.)

Name of Plugging Contractor Berexco, Inc. License No. 5363  
Address Box 723 Hays, Ks. 67601 BJ Titan (cement)

STATE OF Kansas COUNTY OF Ellis, ss.

Mr. Ted Crawford

(Employee of Operator) or (Operator) of above-described well, being first duly sworn on oath, says: That I have knowledge of the facts statements, and matters herein contained and the log of the above-described well as filed the the same are true and correct, so help me God.

(Signature) Ted Crawford  
(Address) Box 723 Hays, Mo. 67601

ROSEMARY SMITH  
NOTARY PUBLIC  
STATE OF KANSAS  
MY APPL. EXP. MAY SUBSCRIBED AND SWORN TO before me this

9 day of May, 19 88

My Commission Expires: 3/1/991

RECEIVED  
Notary Public Commission

MAY 16 1988  
5-16-1988  
CONSERVATION DIVISION  
Wichita, Kansas

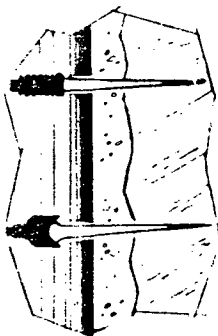
15-065-01903-00-00

# Perforating-Formation-Collar CHART

## LANE WELLS



A Division of DEPFESSER INDUSTRIES, Inc



Company THE KIMBARK CO.  
 Well No. GRAFF No. 1  
 Field GRA-SHA  
 Location NW-1-NW-SE  
6-10S-25W  
 County GRAHAM State KANSAS

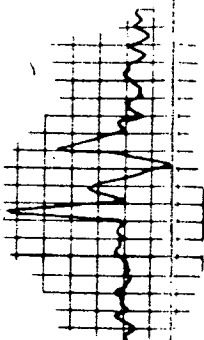


Chart Measure Zero 6.50 A.B.H. Elev. 2584  
 Drilling Zero R.K.B. Elev. 2584  
 Perm. Datum Point BRADEN HEAD Elev. 2577.5

Driller's TD 4042 Date 3-21-59  
 Chart TD 4043 Fluid in Hole Oil  
 Bottom of Chart 4042 Chart by C. FARR  
 Top of Chart 3600 Witnessed by H. FELL HOELT

### CASING RECORD

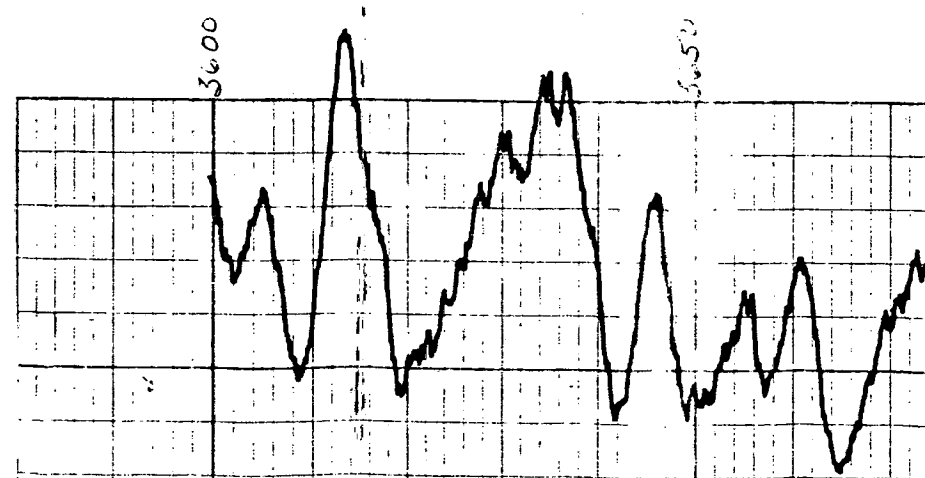
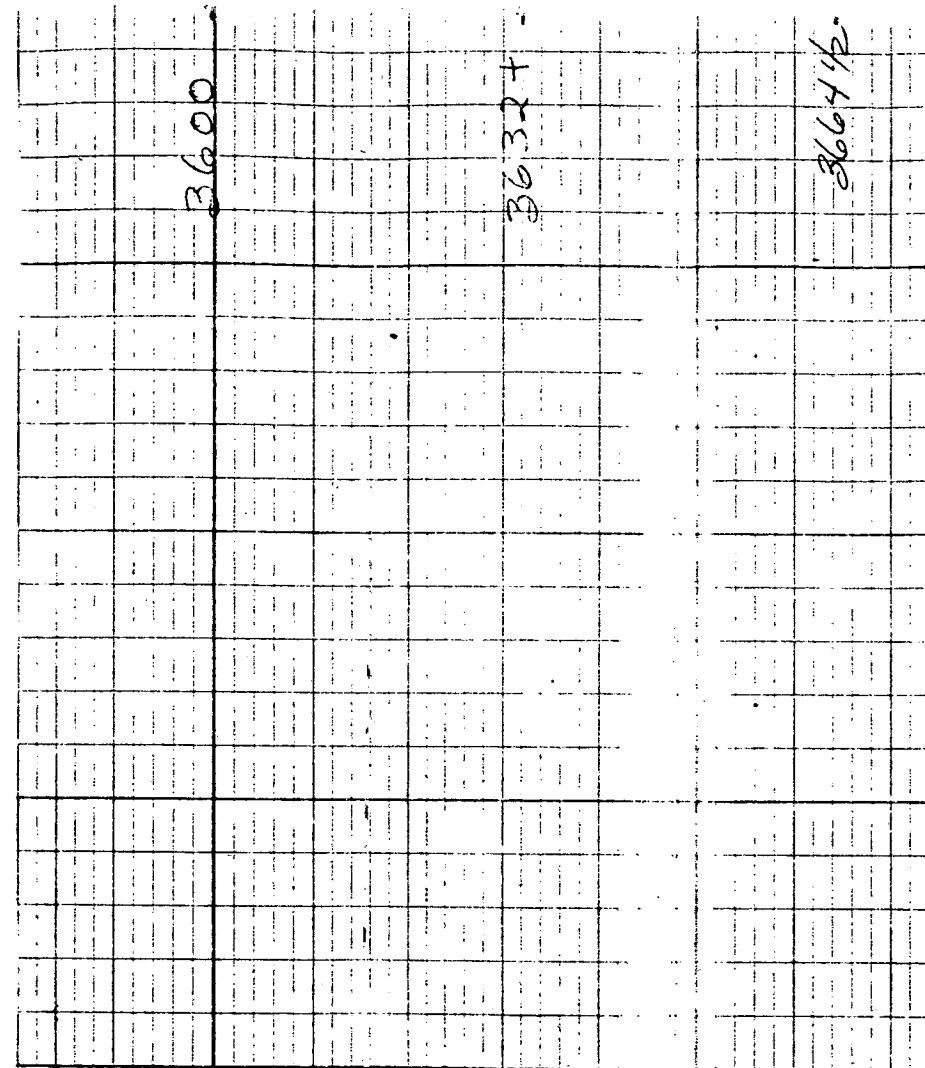
Hole Size	Casing Size	Wt. (Lb./Ft.)	Depth
<u>12 1/4</u>	<u>8 5/8</u>	<u>24<sup>00</sup></u>	<u>SURF to 196</u>
<u>7 7/8</u>	<u>4 1/2</u>	<u>9.5</u>	<u>SURF to 4041</u>
			to
			to

REMARKS  
set to Welex OPEN Hole Log  
set - 2' to WWT D 4046

RECEIVED  
STATE COMMISSION  
CONSERVATION DIVISION  
WICHITA, KANSAS

MAY 16 1988  
MAY 16 1988  
CONSERVATION DIVISION  
WICHITA, KANSAS

Gamma Intensity Increases ↑  
Casing & Collar  
Log Depth



3664 1/2

3696 +

3727 1/2

3760 -

3792 +

3821 +

3853 1/2

3885 1/2

3918 -

3700

3750

3800

3850

3900

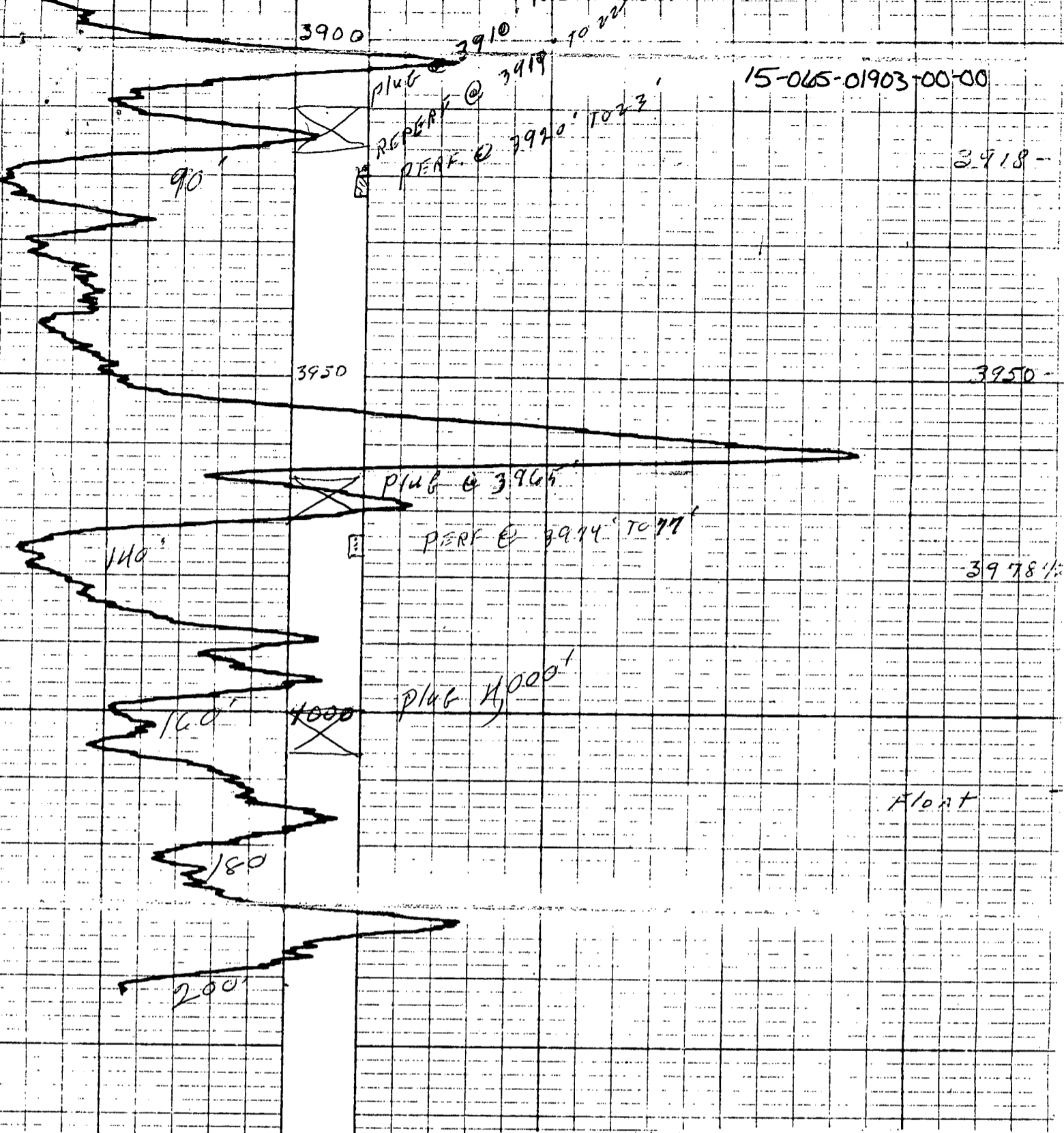
3868 TO 70' TOP  
3874' SEPT 6, 1970  
plug @ 3877'  
PERF @ 3879' TO 82'

RECEIVED  
STATE CONSERVATION COMMISSION  
MAY 16 1988  
WICHITA, KANSAS

plug @ 3910' TOP  
ROPERF @ 3919' TO 22'  
plug @ 3920' TO 23'

5.0'

9.0'



RECEIVED  
STATE COMMISSION  
MAY 16 1988  
CONSERVATION DIVISION  
Wichita, Kansas